

2014

Access to Fareham & Gosport

Consultation Findings

Public consultation carried out between 9 June and 4 August via manned and unmanned exhibitions in the Fareham and Gosport area with paper and online questionnaires providing quantitative and qualitative data.



Contents

How to read this report.....	2
Introduction and Background.....	3
Consultation Aims and Objectives	4
Methodology and Sample.....	5
Sample Frame	5
Methodology.....	6
Consultation Activity and Timing.....	7
Sample achieved.....	8
Equalities information.....	10
Results.....	11
Overall Approach.....	11
Stubbington Bypass.....	14
Newgate Lane Southern Section.....	22
Peel Common Roundabout.....	29
A27 Segensworth to Fareham.....	33
Other Comments.....	40
Technical Appendix.....	42
Appendix 1 Copy Questionnaire.....	43
Appendix 2 Newspaper media coverage.....	45
Appendix 3 Officer –led exhibitions attendee distribution.....	46
Appendix 4 Tables containing ALL responses from both members of the public and organisations	47
Appendix 5 Additional feedback.....	54

How to read this report

The report contains six sections:

Introduction: gives background information as to why consultation was required and key issues surrounding it.

Aims and Objectives of the Consultation: outlines the purpose of the consultation. Details the specific areas on which Hampshire County Council was seeking information.

Methodology: describes how the consultation was conducted.

Sample: reports on how people responded to the consultation.

Results: contains information on the four main sections of the consultation:

- a. Stubbington Bypass
- b. Newgate Lane Southern Section
- c. Peel Common Roundabout
- d. A27 Segensworth to Fareham

The main focus of the report is on the personal views of members of the public, however results have been broken down to show the *overall* responses, those from members of the public only, and those from organisations.

A note on the tables and charts:

- Tables show a breakdown of all the data for each question
- Charts illustrate *only* the personal view of members of the public who responded to each question. They do not include organisations' views or missing/no reply.

Technical Appendix: contains additional information that may be of interest to readers of this report. It also contains feedback that has been received via alternative channels to the formal consultation framework. Please see the Executive Member Committee report for how these have been included.

Introduction and Background

Following the 2013 public consultation, a report was brought forward to a special Decision Day on 17 March 2014

The following recommendations were approved:

‘That the Executive Member for Economy, Transport and Environment approves the preferred options for strategic transport infrastructure, necessary to improve access to Fareham and Gosport, as set out below, subject to completion of necessary technical appraisal:

- i. Stubbington Bypass;
- ii. Peel Common roundabout;
- iii. Newgate Lane southern section and
- iv. the A27 Corridor.’

Based upon the above, a further round of public consultation was approved to be undertaken for the following and is the subject of this 2014 report:

- i. Peel Common roundabout – Interim (Phase 1) improvements – detailed proposals for implementation;
- ii. Stubbington Bypass – preferred route, linking Titchfield gyratory and Titchfield Road to Gosport Road and Peel Common roundabout;
- iii. Newgate Lane southern section – ‘off-line – eastern alignment’ improvement linking to Peel Common roundabout;
- iv. A27 Corridor Improvement – Phases 1 and 2 junction capacity improvements and upgrading to dual carriageway;
- v. A27 Corridor Improvements – Phase 3 junction improvements only (no dualling).

A further technical appraisal will now be considered as part of an updated Fareham and Gosport Strategic Infrastructure Plan, to be the subject of further formal decisions.

Consultation Aims and Objectives

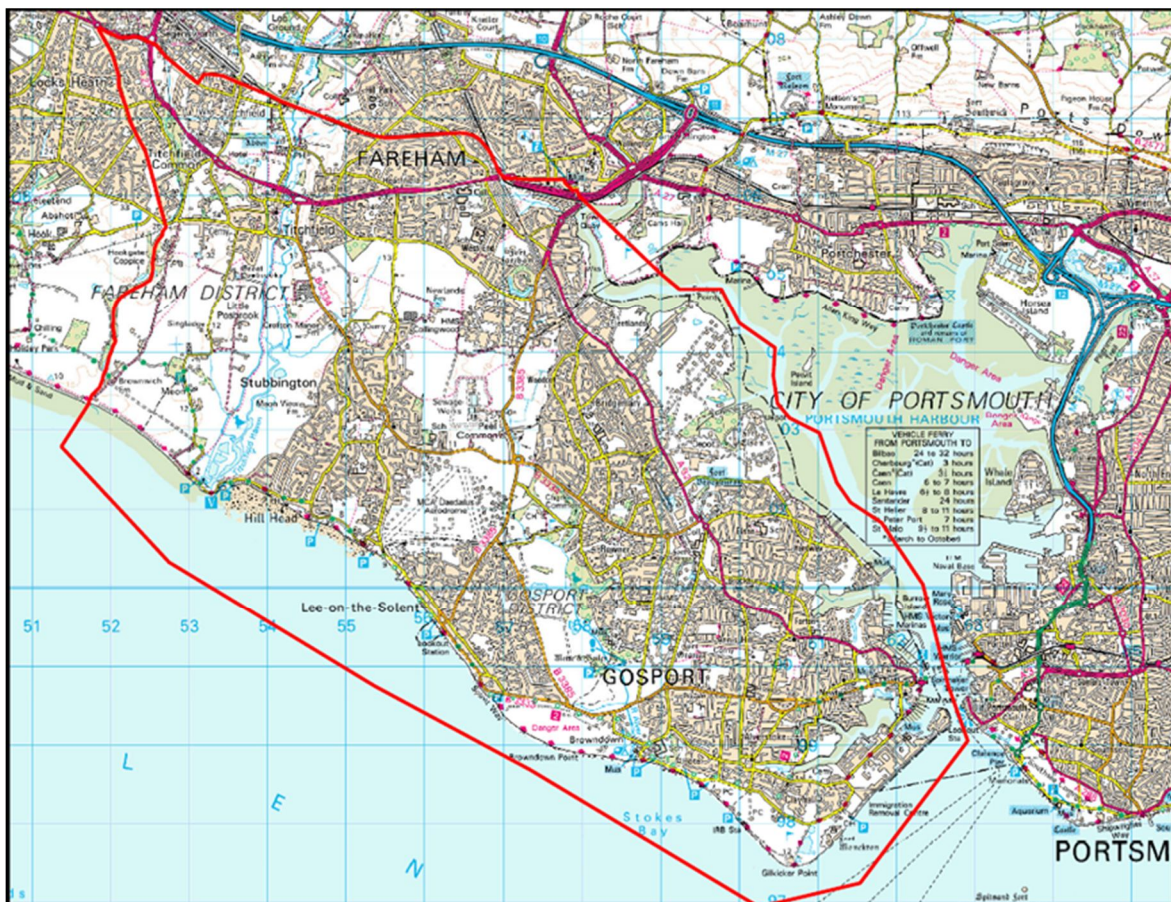
The aim of the consultation was to seek public views on the overarching strategy and preferred options and to determine whether local concerns identified at stage 1 consultation had been taken into account, specifically:

- To seek views on more detailed matters specific to each scheme, to enable progression of design work moving forward.
- To identify outstanding concerns prior to completion of scheme design and in advance of the submission of a planning application next year (2015).

Methodology and Sample

Sample Frame

Map below shows consultation catchment area in which there are approximately 60,000 households in the peninsula south of the A27 and 100m north of A27 between junctions 9 and 11.



Methodology

The consultation was held over eight weeks as a series of officer-led exhibitions at which self-completion questionnaires¹ were provided for feedback purposes. Visitors were able to view detailed plans and ask officers specific questions. Boxes were provided for completed questionnaires. In addition, Freepost envelopes were provided for those who wished to take away questionnaires and return them later. The questionnaires were offered in another language or large print by telephone request.

In addition unstaffed exhibitions were held in five libraries, also with questionnaires, posting boxes and freepost envelopes.

The consultation was posted on Hampshire County Council's 'Have Your Say' web page which links to 'Active Consultations'. A dedicated website² was designed giving background details on the consultation with a downloadable, printer-friendly consultation document and link to an online version of the consultation feedback questionnaire.

¹ Appendix 1

² <http://www3.hants.gov.uk/transport-schemes-index/stubbingtonbypass>

Consultation Activity and Timing

Consultation Activity		Timing
Communications		
54,000 hand delivered leaflets to residents in the consultation catchment area (see map) in the peninsula south of the A27 and 100m north of the A27 between Junctions 9 and 11		23 May to 6 June
Letters of invitation / email to interested parties including statutory and key stakeholders i.e. MOD, Emergency Services, Chamber of Commerce, business fora, EA, EN, EH, FoE, CTC, Disability		late May
Letter / email invitation to County and other Council Members		27 May
Consultation web links on Fareham Borough Council's web page		9 June to 4 August
Public alerts via Twitter @Hantsconnect		Late May to mid August
News media publicity (The News, Portsmouth & Daily Echo) press release issued. See Appendix 2 for coverage.		23 May
Gosport Coastline		23 - 27 June
Gosport / Stubbington Choice		June edition
Fareham Today		late June
Consultation Fieldwork (8 weeks)		
Consultation start date		
Officer-led Exhibitions		
Preview exhibition to local borough and county councillors and other interested parties Fareham Borough Council Offices		6 June
Crofton Community Centre, Stubbington	8 week period	Monday 9 June (1 - 6pm)
Titchfield Community Centre		Wednesday 11 June (3 - 8pm)
Lee-on-the-Solent Community Centre		Friday 13 June (3 - 7pm)
Fareham Academy / Neville Lovett School		Monday 16 June (4 - 7pm)
Royal Sovereign Pavilion, Newgate Lane		Thursday 19 June (2 - 7.30pm)
Crofton Community Centre, Stubbington		Saturday 21 June (10 - 4pm)
Fareham Academy / Neville Lovett School		Tuesday 24 June (4 - 7pm)
Titchfield Community Centre		Wednesday 25 June (3 - 8pm)
Peel Common Junior School		Friday 30 June (4 - 8pm)
Unstaffed Exhibitions		
Fareham Library	8 week period	9 June to 31 July
Stubbington Library		
Locks Heath Library		
Gosport Discovery Centre		
HCC dedicated consultation web page http://www3.hants.gov.uk/transport-schemes-index/stubbingtonbypass		
Consultation end date		
4 August		

Sample achieved

The exhibitions were attended by 942 individuals with a further 24 attending the preview event on 6th June, accounting for a total of 966.³

A total of 490 responses were received to the consultation, of which 93 were online and 397 were paper. The majority of paper-based responses came from the exhibition collection boxes.

Additional comments were received from a number of interested parties via other channels. An overview of these responses can be found in the Technical Appendix⁴. The comments will be taken into account in the Executive Members report but have not been formally analysed as part of this report.

In what capacity are you responding to this consultation?

Table 1

Base	490
	100%
Missing / no reply	36
	7%
Personal view as a member of the public	448
	91%
Representing the views of an organisation	6
	1%

Name of organisation:

Titchfield Village Trust
Peel Common Residents Association
British Horse Society
Fareham Baptist New Life Church
SWAGGS FARM ENTERPRICES LTD.
LANDOWNER OF 171 RANVILLES AS SHOWN ON MAP

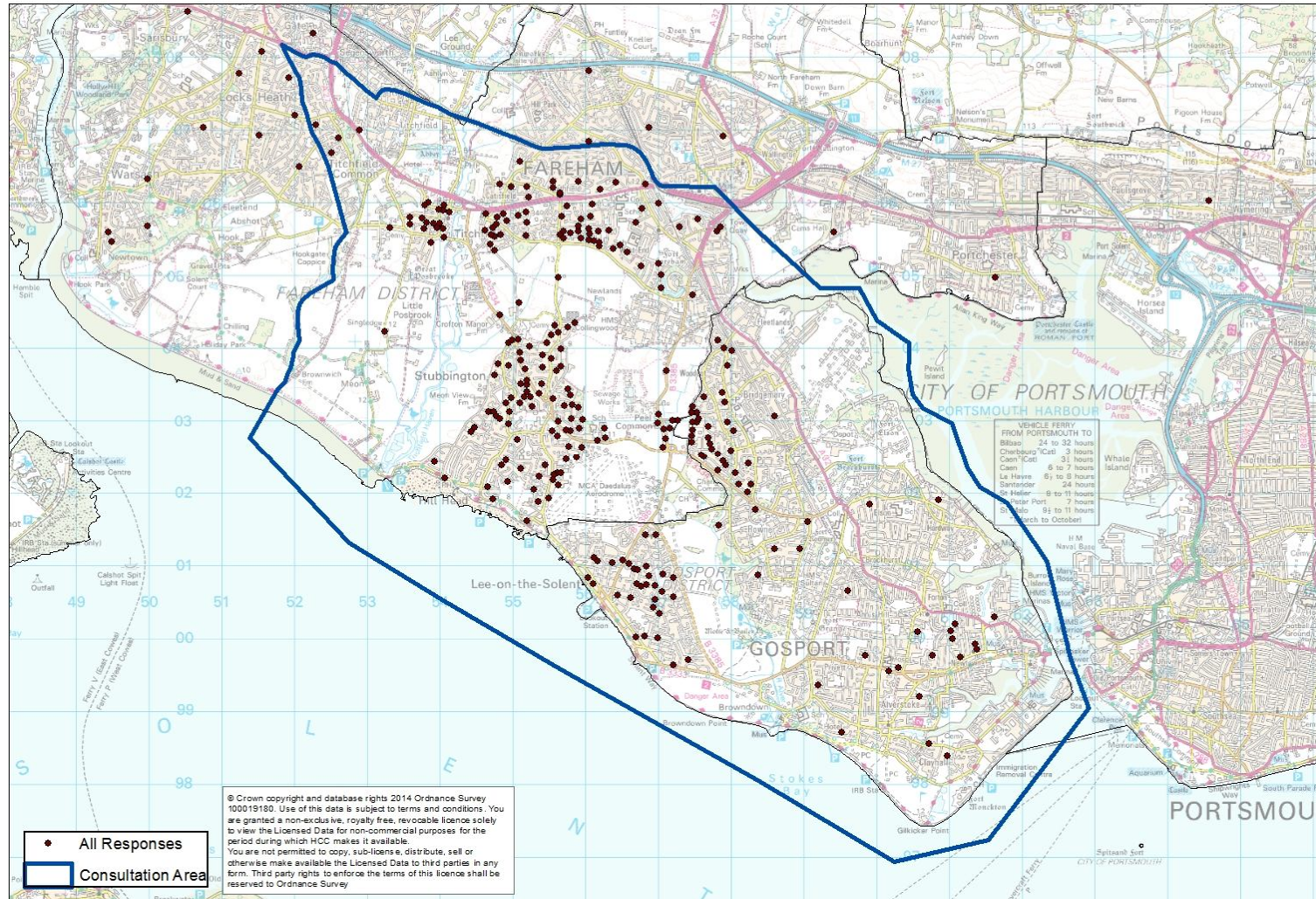
Following map shows the distribution of all participants in the consultation

³ See Appendix 3 for exhibition attendee distribution

⁴ See Appendix 5 for Additional feedback

Overall Response

(Points are postcode centroids and do not represent individual responses)



Equalities information

This information was optional

Age

Table 2

Base	490
	100%
Missing / no reply	33
	7%
17 years or less	-
	-
18 - 24	3
	1%
25 - 34	13
	3%
35 - 44	46
	9%
45 - 54	61
	12%
55 - 64	92
	19%
65 - 74	170
	35%
75+	64
	13%
Prefer not to say	8
	2%

Gender

Table 3

Base	490
	100%
Missing / no reply	72
	15%
Male	236
	48%
Female	167
	34%
Prefer not to say	15
	3%

Do you consider yourself to be disabled?

Table 4

Base	490
	100%
Missing / no reply	75
	15%
Yes	19
	4%
No	380
	78%
Prefer not to say	16
	3%

Results

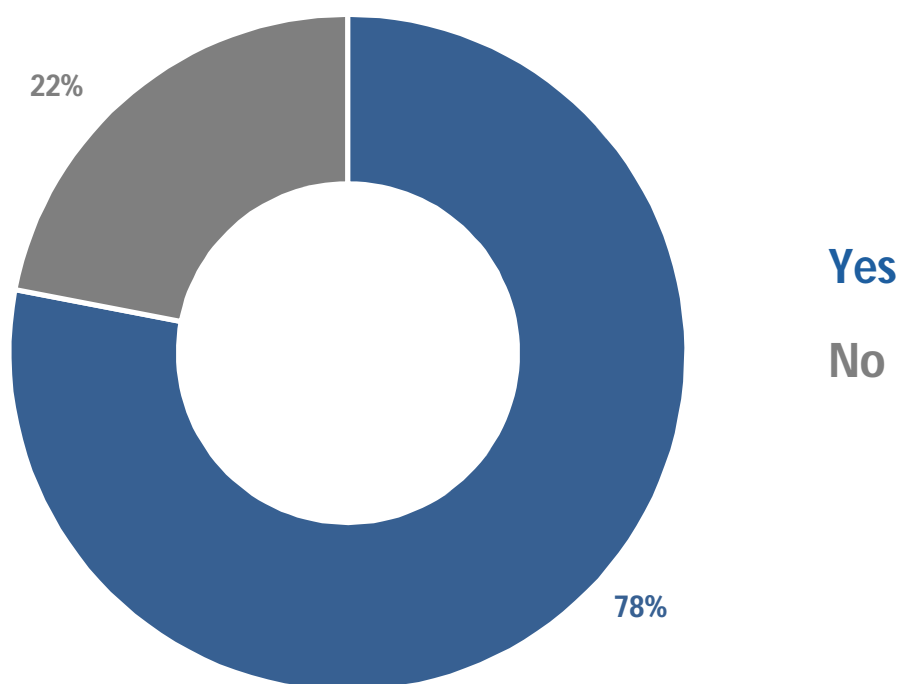
Overall Approach

Do you support the overall approach (set out in the accompanying exhibition display material) towards improving Access to Fareham and Gosport?

Table 5

	Total	Missing/No reply	Personal view as a member of the public	Representing the views of an organisation
Base	490	36	448	6
Missing/No reply	47 10%	5 14%	41 9%	1 17%
Yes	341 70%	17 47%	319 71%	5 83%
No	102 21%	14 39%	88 20%	- -

Figure 1 Personal view as a member of the public who responded to this question



Comments – Do you support the overall approach (set out in the accompanying exhibition display material) towards improving Access to Fareham and Gosport?

If No, please say why

Figure 2 – Comments

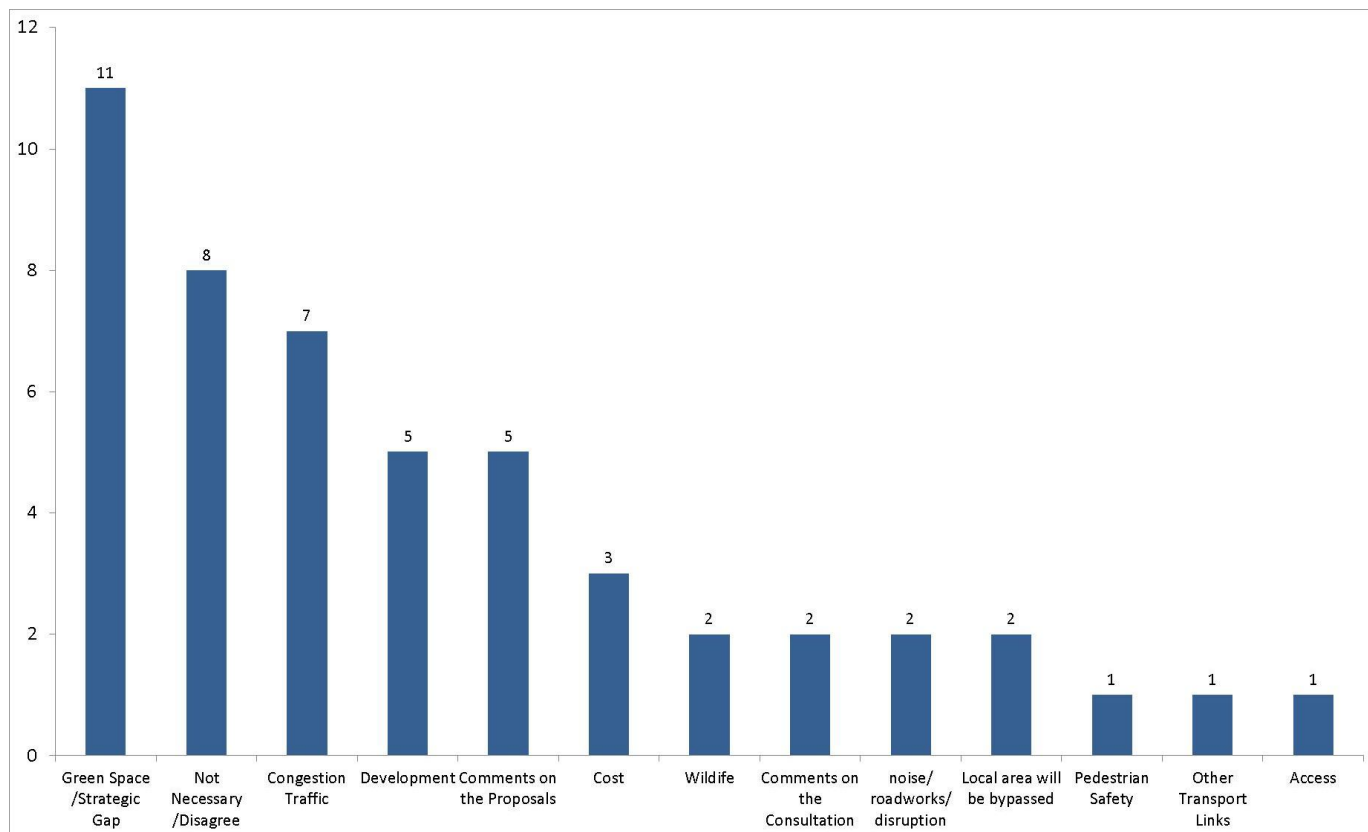


Table 6

Category	Typical Responses
<i>Cost</i>	<ul style="list-style-type: none"> • It would be a dreadful waste of money to build this bypass • Not necessary to spend that much money
<i>Development</i>	<ul style="list-style-type: none"> • Will encourage further house building in the area • There is no overall control as regards development
<i>Comments on the Proposals</i>	<ul style="list-style-type: none"> • Poorly thought out proposals • Insufficient information about the proposals from Titchfield to J9 M27 to pass comment overall
<i>Wildlife</i>	<ul style="list-style-type: none"> • It is also used by Skylarks for nesting and by the Canadian Geese • There are also foxes dens around the field too
<i>Green Space/Strategic Gaps</i>	<ul style="list-style-type: none"> • The road passes through an approved Strategic Gap. • There is limited green space and the area is dense already

	without churning up more grass.
<i>Comments on the Consultation</i>	<ul style="list-style-type: none"> • Consultation on the proposed options have not covered all areas of Fareham, Stubbington, Titchfield, Gosport and Lee-on-Solent to understand the entire view of these residents.
<i>Pedestrian Safety</i>	<ul style="list-style-type: none"> • We are then going to still have to cross the road avoiding the traffic.
<i>Not Necessary/Disagree</i>	<ul style="list-style-type: none"> • This is an unnecessary amendment to the area. • Not required.
<i>Noise/Roadworks/Disruption</i>	<ul style="list-style-type: none"> • We will have to put up with more roadworks, more noise, even less sleep at night and a longer journey to and from work.
<i>Congestion/Traffic</i>	<ul style="list-style-type: none"> • I do not think it will improve congestion • The overall approach would help reduce the traffic around Fareham
<i>Other Transport Links</i>	<ul style="list-style-type: none"> • Failed to offer alternative to car and road based transport, having the Gosport Railway Back would be a great start
<i>Area will be bypassed</i>	<ul style="list-style-type: none"> • The Stubbington shops would really suffer from traffic not coming through the village • Stubbington will loose passing trade & therefore it will become another 'ghost' village, with closed shops et

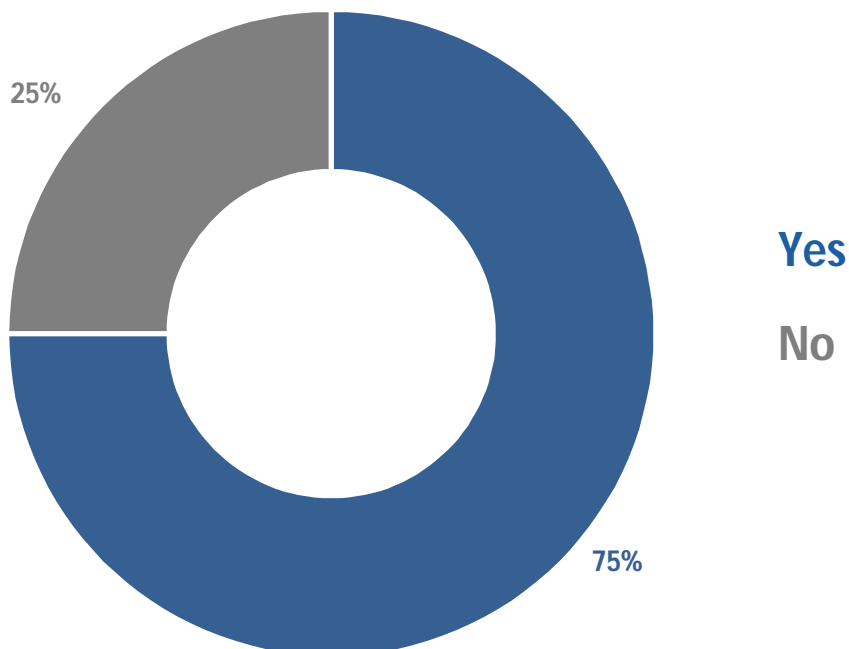
Stubbington Bypass

Do you support the preferred route for Stubbington Bypass?

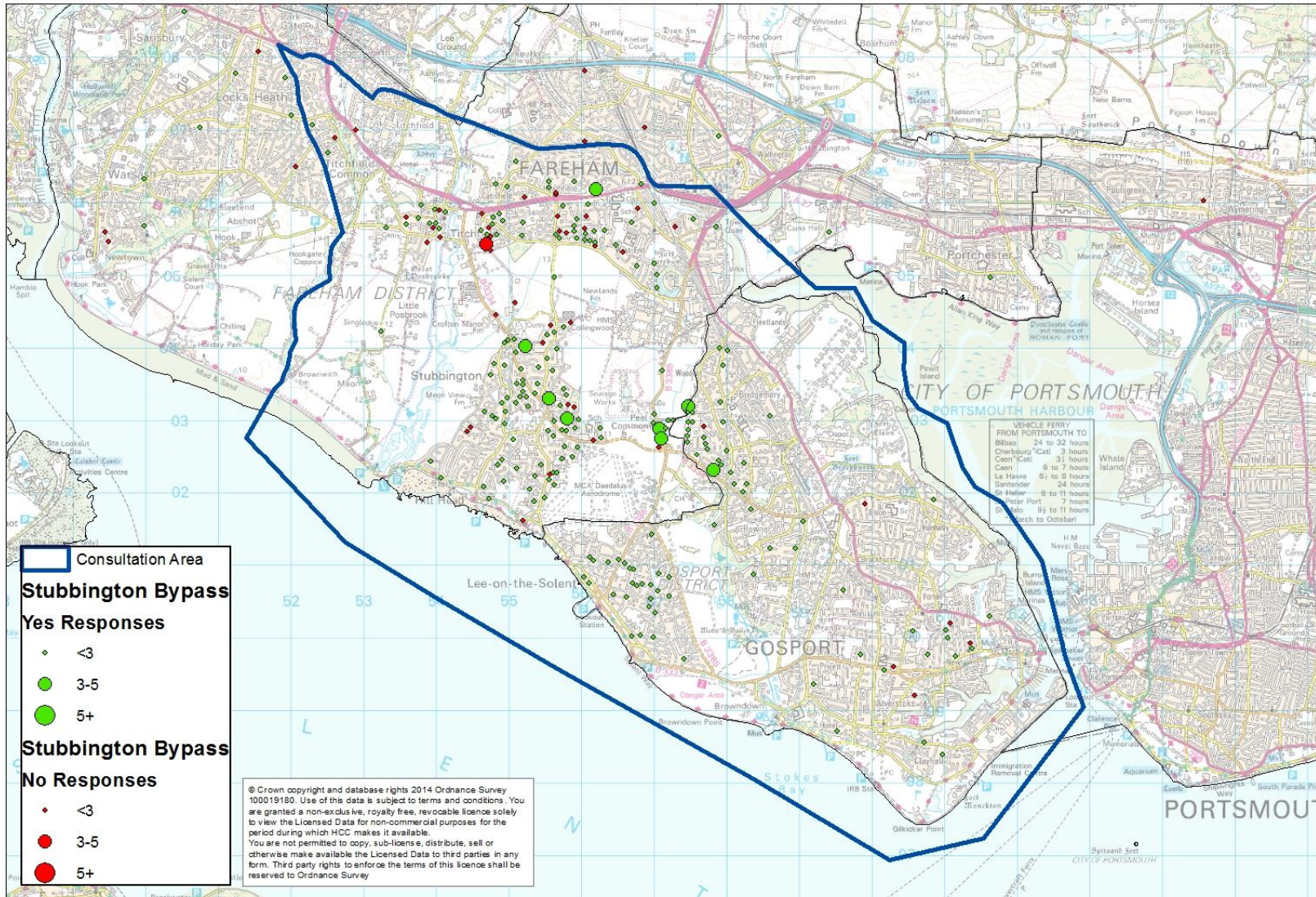
Table 7

	Total	Missing/No reply	Personal view as a member of the public	Representing the views of an organisation
Base	490	36	448	6
Missing/No reply	58 12%	6 17%	52 12%	- -
Yes	320 65%	20 56%	296 66%	4 67%
No	112 23%	10 28%	100 22%	2 33%

Figure 3 Personal view as a member of the public who responded to this question



Do you support the preferred route for Stubbington Bypass? Yes/No Responses



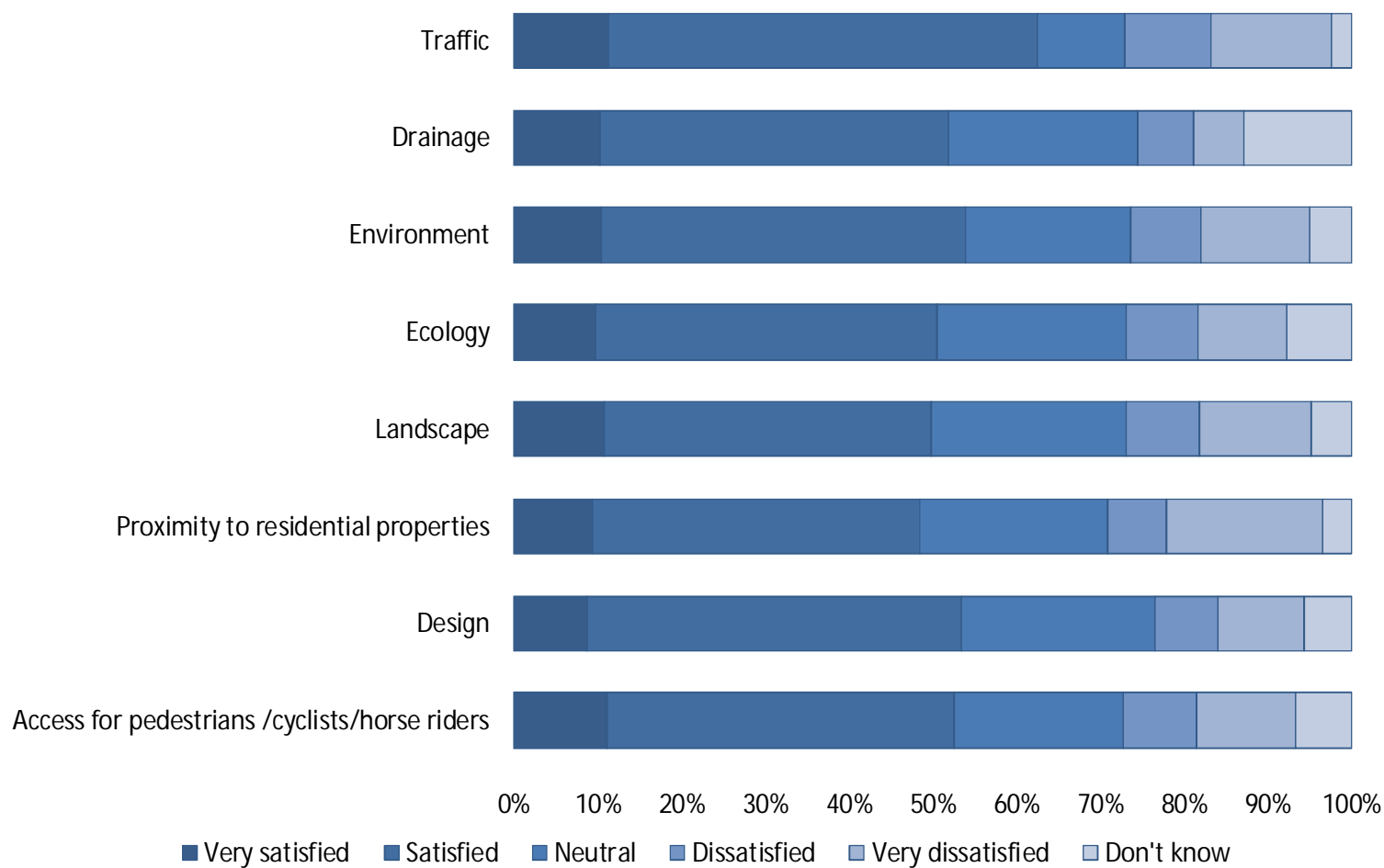
How satisfied are you that the issues below have been taken into account in the assessment work so far?

Table 8

	Total	Missing/No reply	Very satisfied	Satisfied	Neutral	Dissatisfied	Very dissatisfied	Don't know
Base	3584	292 8%	337 9%	1405 39%	677 19%	271 8%	406 11%	196 5%
Traffic	448	34 8%	47 10%	212 47%	43 10%	43 10%	59 13%	10 2%
Drainage	448	39 9%	42 9%	170 38%	93 21%	27 6%	25 6%	52 12%
Environment	448	35 8%	43 10%	180 40%	81 18%	35 8%	54 12%	20 4%
Ecology	448	39 9%	40 9%	167 37%	92 21%	35 8%	44 10%	31 7%
Landscape	448	41 9%	44 10%	159 35%	95 21%	35 8%	55 12%	19 4%
Proximity to residential properties	448	35 8%	39 9%	161 36%	93 21%	29 6%	77 17%	14 3%
Design	448	34 8%	36 8%	185 41%	96 21%	31 7%	43 10%	23 5%
Access for pedestrians /cyclists/horse riders	448	35 8%	46 10%	171 38%	84 19%	36 8%	49 11%	27 6%

How satisfied are you that the issues below have been taken into account in the assessment work so far?

Figure 4 Personal view as a member of the public who responded to this question



The preferred route crosses some existing public rights of way. We are working with HCC Countryside Services Access Team to understand whether local people at Stubbington want new or improved local pedestrian, cycle and/or bridleway access. It may be possible to deliver some improvements in conjunction with the scheme.

Please indicate which type(s) of route you might want and where

Table 9

	Total	Missing/No reply	Walking	Cycles	Bridleways	Don't know / No opinion
Base	2688	468 17%	1030 38%	1206 45%	205 8%	774 29%
Circular routes	448	76 17%	203 45%	181 40%	47 10%	124 28%
Routes connecting Titchfield Road to Gosport Road	448	84 19%	165 37%	206 46%	35 8%	125 28%
Routes connecting Titchfield Road to Peak Lane	448	71 16%	180 40%	206 46%	40 9%	124 28%
Routes connecting Titchfield Road to Newgate Lane	448	78 17%	168 38%	218 49%	30 7%	122 27%
Routes connecting Longfield Avenue to Newgate Lane	448	81 18%	163 36%	201 45%	26 6%	135 30%
Routes connecting Longfield Avenue to Gosport Road	448	78 17%	151 34%	194 43%	27 6%	144 32%

Comments – Stubbington Bypass

Figure 5

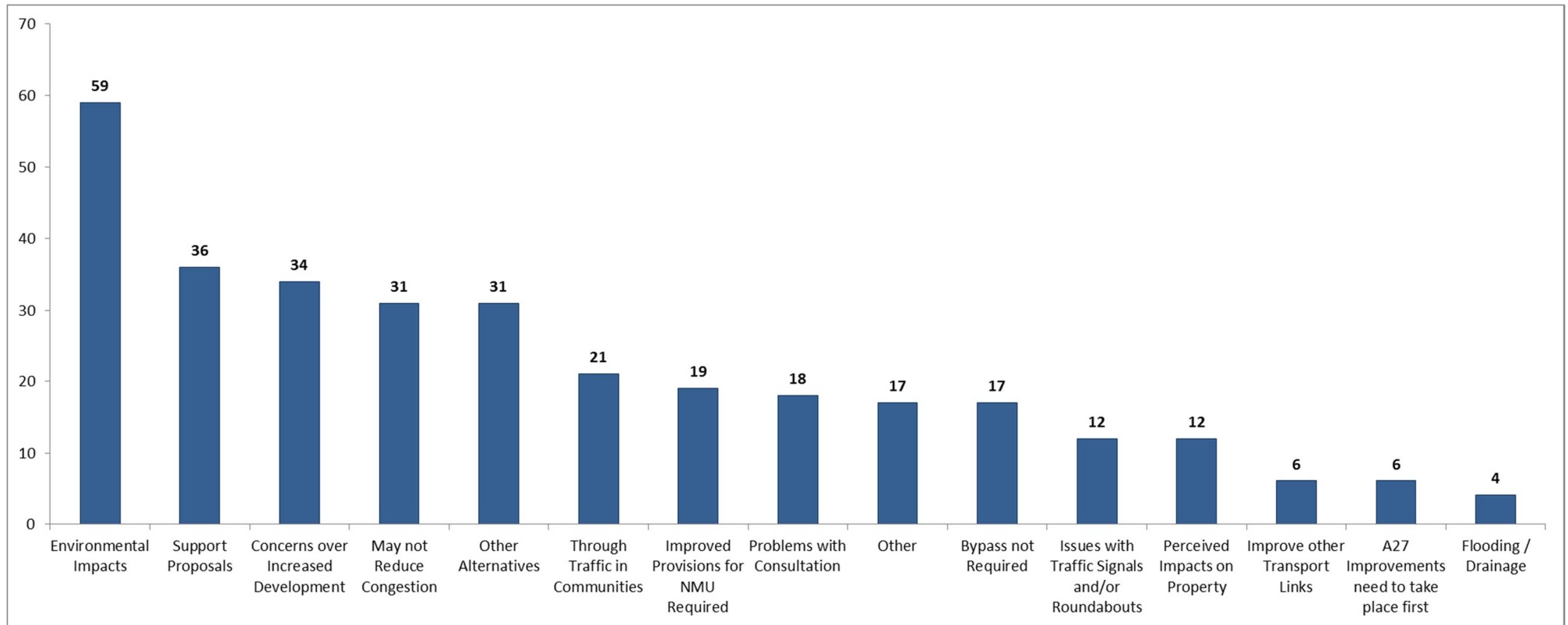


Table 10

Category	Typical Responses
<i>Environmental Impacts</i>	<ul style="list-style-type: none"> • Impact on amenities (loss of footpaths, open space etc.) • Loss of strategic gap • Air pollution • Noise pollution • Sound barriers required • Noise and Air impacts at Crofton school • Impact on wildlife • Loss of habitat • Being built on conservation area • Close proximity to SSSI
<i>Concerns over Increased Development</i>	<ul style="list-style-type: none"> • Bypass is being built to facilitate development • Threat of urbanisation • Development will make improvements pointless • Already too many people in Fareham and Gosport • Fear of development on strategic gap / green land
<i>Other Alternatives</i>	<ul style="list-style-type: none"> • Build a bridge over Fareham Creek to Delme Roundabout • Build bridges / underpasses to reduce number of pedestrian crossings • Stubbington bypass should be for motor vehicles only • Build a bypass from Gosport to M27 avoiding Fareham • Bypass should join onto Titchfield gyratory • Make bypass dual carriageway • Build a slip lane on Peel Common roundabout for bypass only • Improve A32 instead of building Stubbington Bypass • Should run from Peak Lane to B3334 • Improve Tesco roundabout instead / build a flyover at Tesco roundabout • Run top of bypass along Ranvilles lane
<i>Support Proposals</i>	<ul style="list-style-type: none"> • Reduced through traffic in Stubbington Village • Scheme is long overdue • Would like it built as soon as possible • Provides improvements for the future • Reduces HGV's on Titchfield Road • Good considerations for drainage
<i>May not Reduce Congestion</i>	<ul style="list-style-type: none"> • Traffic lights and roundabouts prevent free flowing traffic • Development will create more road users thus more congestion • Bypass is just moving congestion • Will create bottlenecks at Titchfield Road / gyratory
<i>Through Traffic in Communities</i>	<ul style="list-style-type: none"> • Traffic calming measures required in Stubbington and Titchfield Village • Increased rat running in villages to avoid bottlenecks at Titchfield Road • Traffic lights will encourage rat running in village • HGV's should only be allowed to use major roads
<i>Improved Provisions for Non-Motorised Users (NMU) Required</i>	<ul style="list-style-type: none"> • Improved pedestrian crossings (underpasses / bridges) • Improved cycle facilities • Improved equestrian facilities • Dedicated off road cycle lanes to encourage cycling

	<ul style="list-style-type: none"> • Retain pedestrian, cycle and equestrian access on Ranvilles Lane
<i>Problems with Consultation</i>	<ul style="list-style-type: none"> • Information difficult to understand • Views of Fareham residents not considered • Ranville Lane residents haven't received leaflets • Lack of clarity on relationship between the bypass and potential development • Traffic flows / data aren't current figures • Route chosen isn't the one favoured in the first consultation • Exhibition staff have lack of local knowledge / appreciation of local issues • Lack of information provided to Fareham residents
<i>Bypass not Required</i>	<ul style="list-style-type: none"> • Should spend money on improving Newgate Lane • Bypass between Gosport and M27 is required instead • Waste of money • Too expensive • Will not reduce congestion, will just cause bottlenecking • Should improve Rowner Road instead • Real problem is in Fareham at Tesco roundabout
<i>Issues with Traffic Signals and/or Roundabouts</i>	<ul style="list-style-type: none"> • Too many traffic lights • Too many roundabouts • Traffic will not flow freely because of lights and roundabouts • Traffic lights should only be operation during peak times
<i>Perceived Impacts on Properties</i>	<ul style="list-style-type: none"> • Too close to properties • Owners un-aware of potential bypass when purchasing property
<i>Improve other Transport Links</i>	<ul style="list-style-type: none"> • Improve public transport links to Fareham • Build connection between Gosport and Portsmouth (bridge or tunnel) • Lack of public transport • Connect Gosport to rest of the Solent via catamaran services
<i>A27 Improvements need to take place first</i>	<ul style="list-style-type: none"> • Bypass will cause bottleneck unless A27 is improved first • A27 improvements should be priority • Titchfield gyratory requires improvement
<i>Flooding & Drainage Issues</i>	<ul style="list-style-type: none"> • Present drainage will require upgrading • Bridge road junction regularly floods (at traffic lights) • Greater emphasis required on flood protection • Loss of land used for drainage
<i>Other</i>	<ul style="list-style-type: none"> • Needs to be done in conjunction with other proposals, not as a stand alone measure • Too close to Crofton School • Ban HGV's on Titchfield Road once bypass is constructed • Concerns over whether funding can be obtained • Will make getting out of Titchfield village difficult • Signalised junction required at Peak Lane • Require access from Ranvilles Lane • A32 improvements should be higher priority

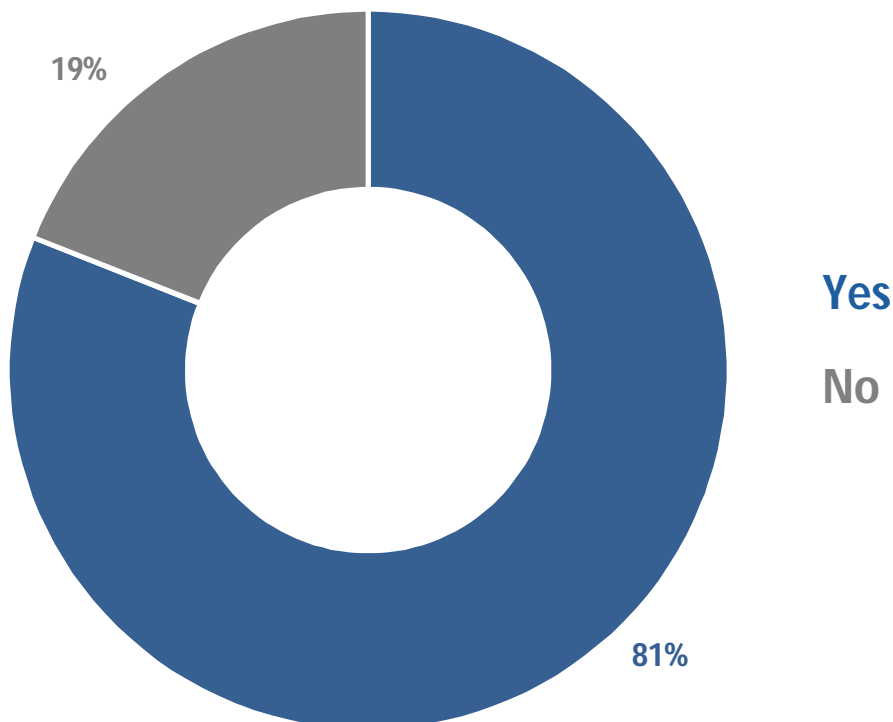
Newgate Lane Southern Section

Do you support the preferred route for the southern section of Newgate Lane?

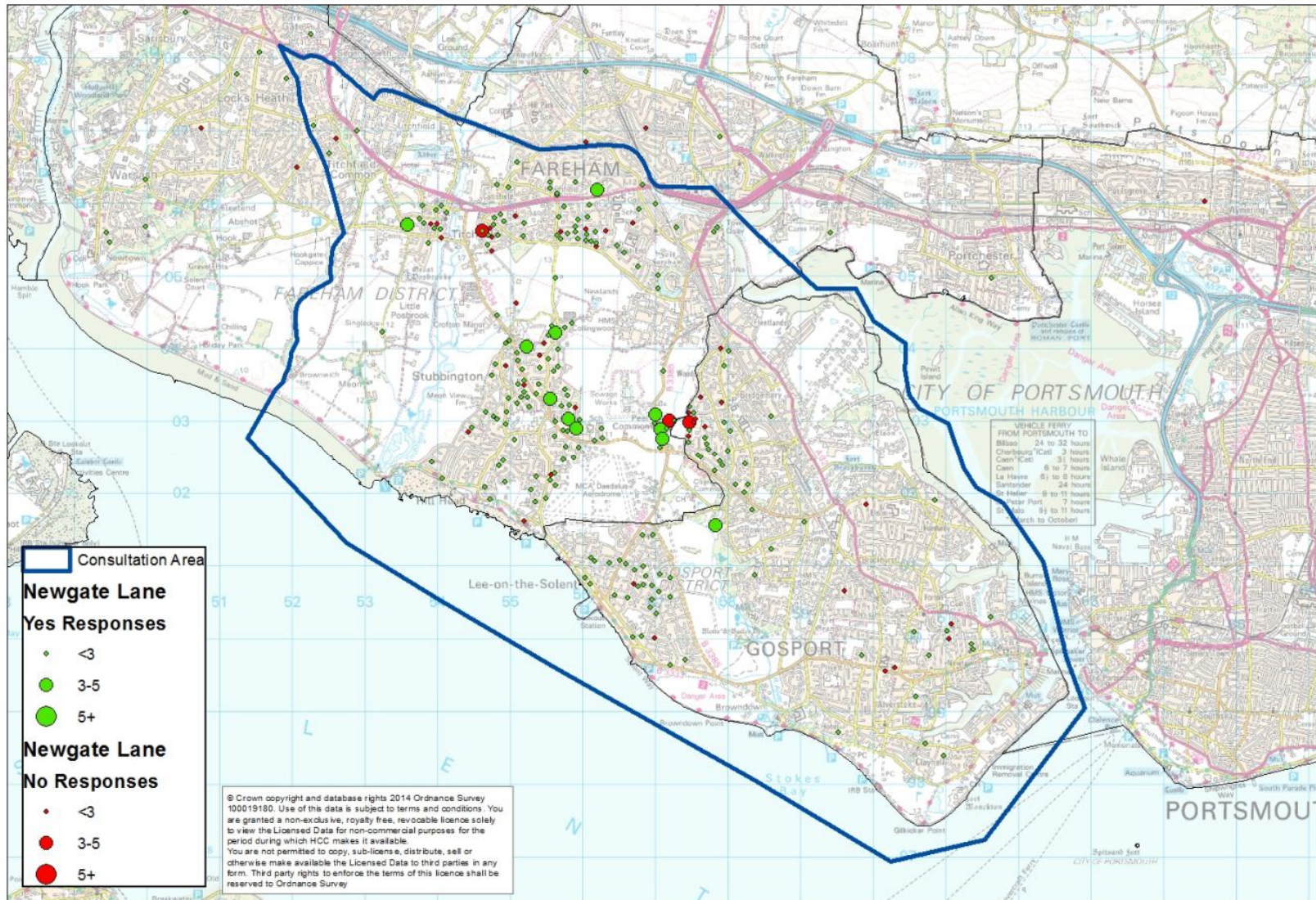
Table 11

	Total	Missing/No reply	Personal view as a member of the public	Representing the views of an organisation
Base	490	36	448	6
Missing/No reply	57 12%	4 11%	52 12%	1 17%
Yes	340 69%	18 50%	320 71%	2 33%
No	93 19%	14 39%	76 17%	3 50%

Figure 6 Personal view as a member of the public who responded to this question



Do you support the preferred route for the southern section of Newgate Lane? Yes/No Responses



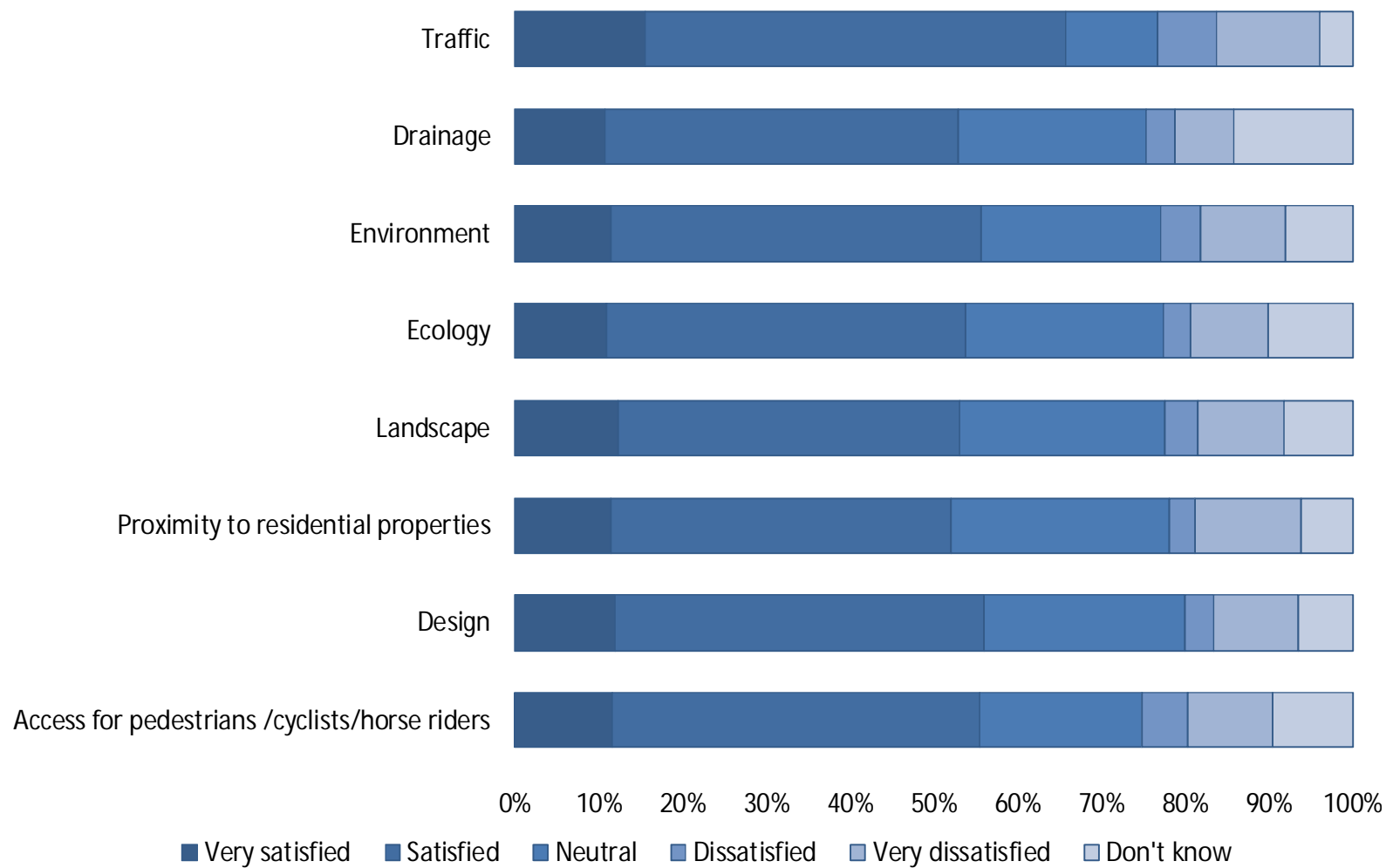
How satisfied are you that the issues below have been taken into account in the assessment work so far?

Table 12

	Total	Missing/No reply	Very satisfied	Satisfied	Neutral	Dissatisfied	Very dissatisfied	Don't know
Base	3584	452 13%	377 11%	1365 38%	676 19%	134 4%	322 9%	258 7%
Traffic	448	51 11%	62 14%	199 44%	44 10%	28 6%	49 11%	15 3%
Drainage	448	57 13%	42 9%	165 37%	88 20%	13 3%	28 6%	55 12%
Environment	448	56 13%	45 10%	173 39%	84 19%	19 4%	40 9%	31 7%
Ecology	448	59 13%	43 10%	166 37%	92 21%	13 3%	36 8%	39 9%
Landscape	448	58 13%	48 11%	159 35%	96 21%	15 3%	40 9%	32 7%
Proximity to residential properties	448	54 12%	45 10%	160 36%	103 23%	12 3%	50 11%	24 5%
Design	448	56 13%	47 10%	173 39%	94 21%	13 3%	40 9%	25 6%
Access for pedestrians /cyclists/horse riders	448	61 14%	45 10%	170 38%	75 17%	21 5%	39 9%	37 8%

How satisfied are you that the issues below have been taken into account in the assessment work so far?

Figure 7



If you are a resident of Newgate Lane, Woodcote Lane or Albert Road please answer the following question:

As there will be a new junction to Newgate Lane from the new road, how would you like to see the existing entry from Peel Common roundabout managed?

A total of 65 participants responded to the above question. Of these, only 25 were identified by their postcodes as being resident in Newgate Lane, Woodcote Lane or Albert Road.

Table 13 below contains their responses. A table showing all 65 responses is included in Appendix 4.

Table 13

	Total	Missing/No reply	Personal view as a member of the public
Base	25	1	24
Missing/No reply	2 8%	1 100%	1 4%
Full access for all as it is now	5 20%	-	5 21%
No access except for emergency vehicles	9 36%	-	9 38%
No entry (except buses and cyclists)	9 36%	-	9 38%

Comments – Newgate Lane Southern Section

Figure 8

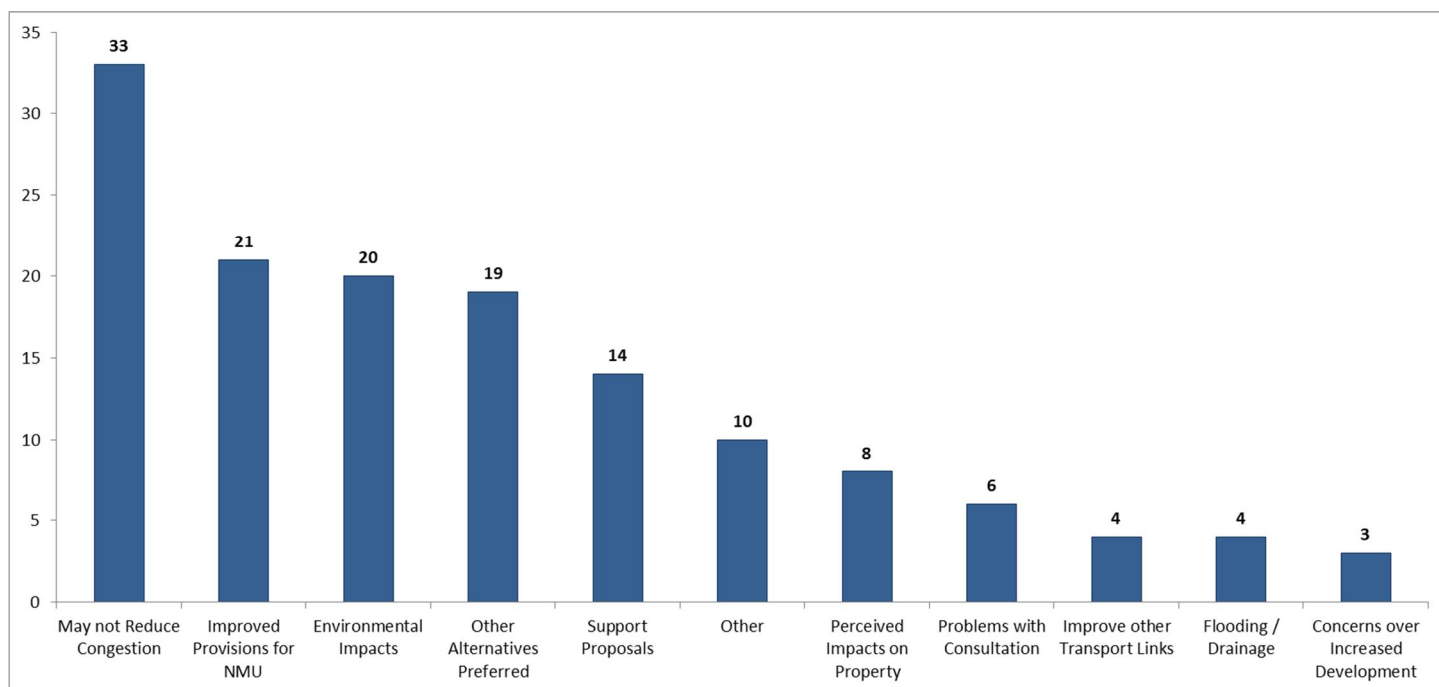


Table 14

Category	Typical Responses
<i>May not Reduce Congestion</i>	<ul style="list-style-type: none"> • Should be dual carriageway • Will increase congestion at Longfield Ave, St. Michaels Grove and Bishopsford Road • If you improve it, more cars will use it • Will cause bottlenecking from A32 to Quay flyover • Journey time savings are only marginal for low percentage of users
<i>Improved Provisions for Non-Motorised Users (NMU) Required</i>	<ul style="list-style-type: none"> • Proposals improve pedestrian and cycle facilities • Proposals should incorporate better pedestrian and cycle facilities. Very dangerous at present • Newgate Lane should be pedestrian and cycle free. Cyclists hold up traffic • Cycle links need improving between BRT, Newgate Lane and HMS Collingwood • Lack of bridleways / horse paths
<i>Environmental Impacts</i>	<ul style="list-style-type: none"> • Noise impacts. Noise reduction required • Dust and air pollution • Loss of green space and amenities

	<ul style="list-style-type: none"> • Impact and River Alver and Alver Valley
<i>Other Alternatives Preferred</i>	<ul style="list-style-type: none"> • Existing road should be resident access • Should be dual carriageway • Junction with existing Newgate Lane south should be right turn only and signalised • Should construct flyovers to connect A27 and A32 to M27
<i>Support Proposals</i>	<ul style="list-style-type: none"> • Current congestion is unpleasant for Newgate Lane residents • Improves pedestrian and cycle facilities • Improves facilities for people with wheelchairs, mobility scooters and push chairs
<i>Perceived Impacts on Property</i>	<ul style="list-style-type: none"> • Proposals weren't shown up when searches on property were carried out • Road too close to property
<i>Problems with Consultation</i>	<ul style="list-style-type: none"> • Doesn't mention how many people were asked about re-aligning Newgate Lane • Initial consultation only asked for blue or green routes, therefore data misleading • Those impacted around the strategic gap have been given the least information • Circulation wasn't widespread
<i>Improve other Transport Links</i>	<ul style="list-style-type: none"> • Boat service between Portsmouth, Gosport and Southampton • Improved public transport required • Too many cars on the road
<i>Flooding & Drainage Issues</i>	<ul style="list-style-type: none"> • Woodcote Lane and adjacent fields flood • Scheme takes away land used for drainage • High water table in Woodcote
<i>Concerns over Increased Development</i>	<ul style="list-style-type: none"> • Works will encourage future development • Development will just congest improved roads
<i>Other</i>	<ul style="list-style-type: none"> • Funding concerns - will funding be granted? • Waste of money • Will be ineffective if whole scheme isn't delivered • Noise disruption to Crofton School when yr 11 students sitting GCSE's • Should purchase an extra 8m of land to widen in the future • Access to Bridgemary / Rowner estates should be incorporated • Roads should be tolled at peak times

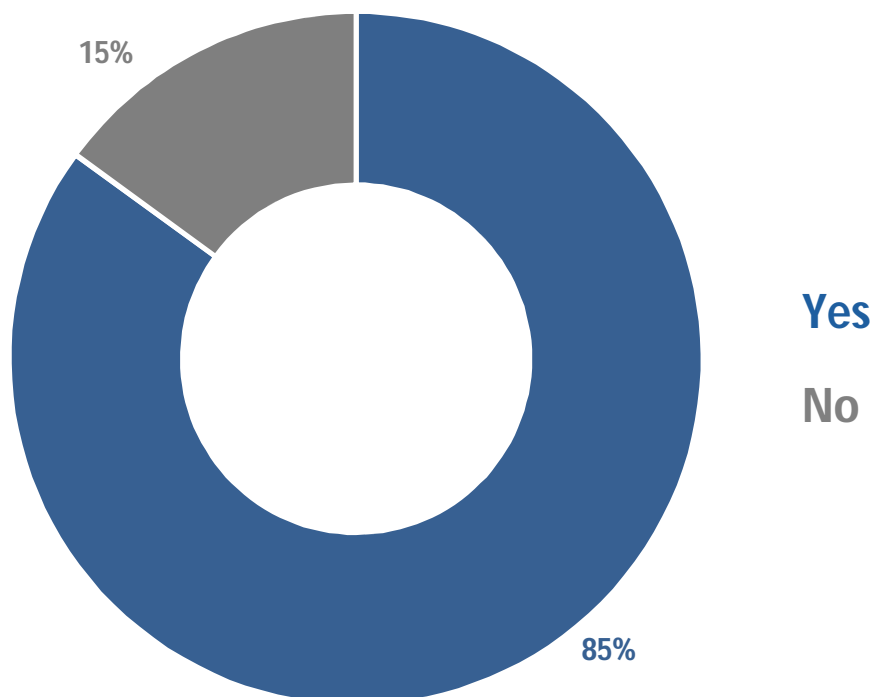
Peel Common Roundabout

Do you support the planned improvements to Peel Common Roundabout programmed for 2015/2016?

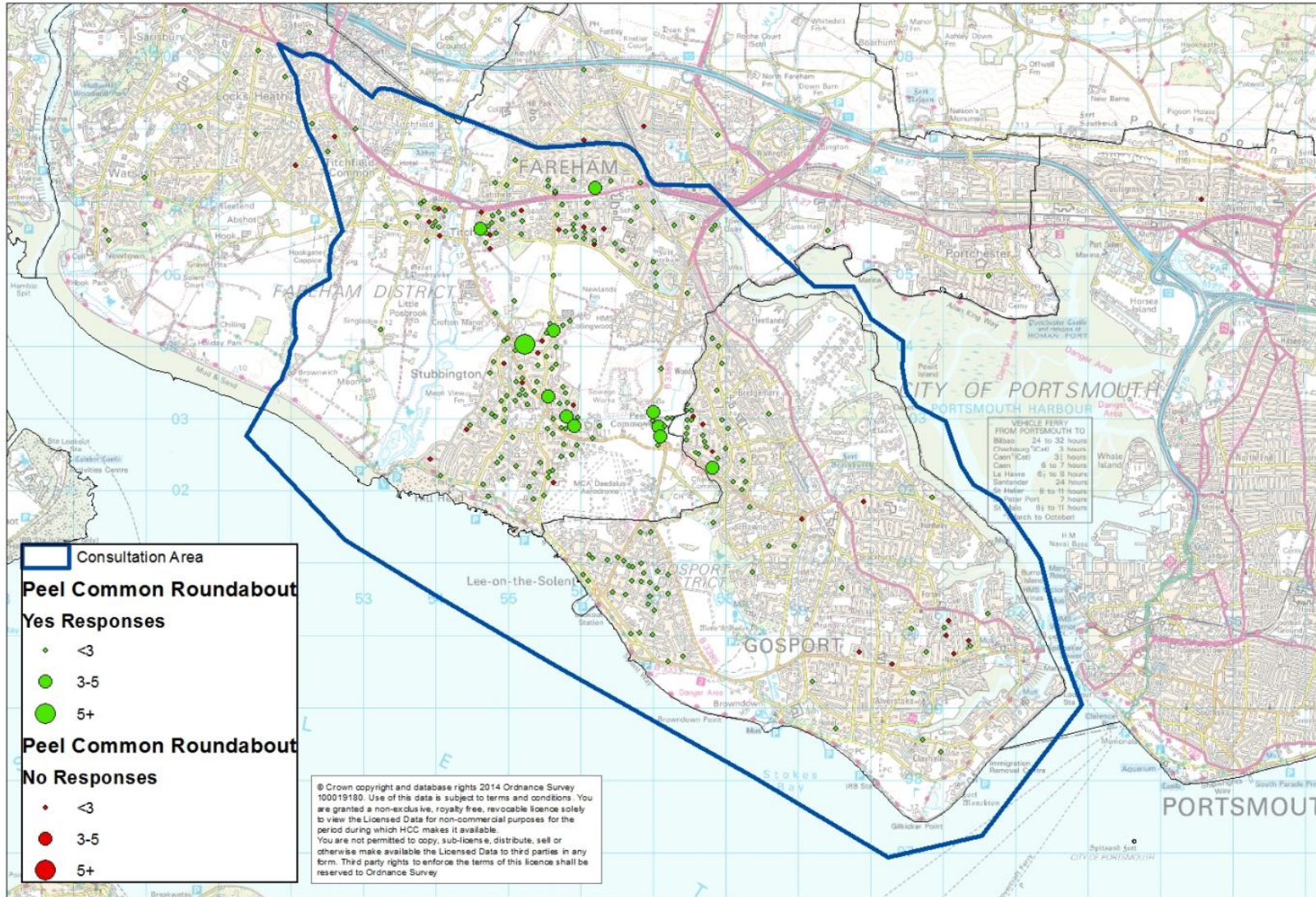
Table 15

	Total	Missing/No reply	Personal view as a member of the public	Representing the views of an organisation
Base	490	36	448	6
Missing/No reply	61 12%	7 19%	53 12%	1 17%
Yes	354 72%	15 42%	335 75%	4 67%
No	75 15%	14 39%	60 13%	1 17%

Figure 9 Personal view as a member of the public who responded to this question



Do you support the planned improvements to Peel Common Roundabout programmed for 2015/2016? Yes/No Responses



Comments – Peel Common Roundabout

Figure 10

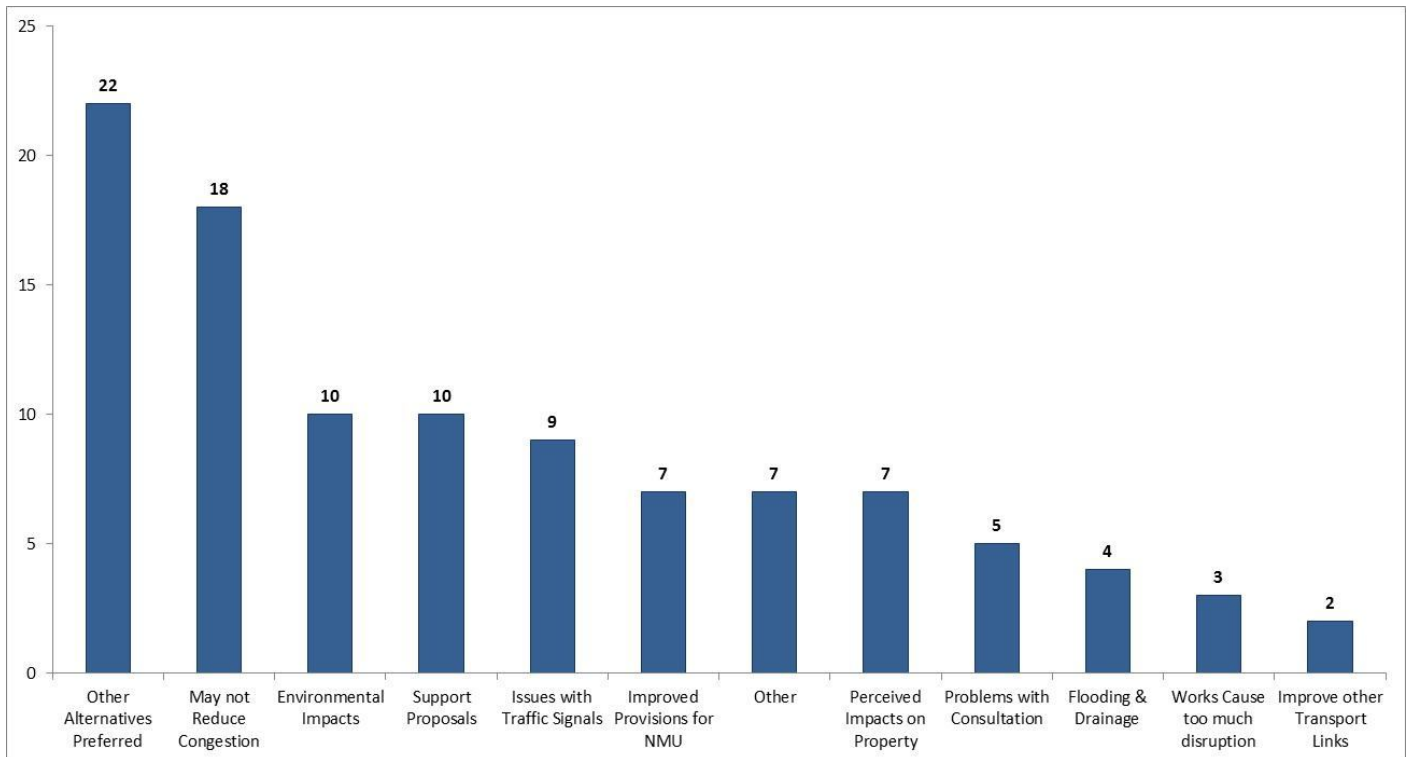


Table 16

Category	Typical Responses
<i>Other Alternatives Preferred</i>	<ul style="list-style-type: none"> • Widen Cherque Way to 2 lanes • Need to improve Gosport road • Dualling up to Peel Common RA, one lane for Gosport / Rowner, one for Lee / Stubbington • Bypass lane to Gosport Road • Link bypass to existing Peel Common roundabout • Broom Way needs improvements • Build a flyover from Newgate Lane to Broomway
<i>May not Reduce Congestion</i>	<ul style="list-style-type: none"> • People will continue to used the old routes • Too many traffic lights • Problem at peel common roundabout isn't a problem at present • Only replacing a single carriageway with another • Will cause bottlenecking • Not substantial enough
<i>Environmental Impacts</i>	<ul style="list-style-type: none"> • Destroying greenfield and countryside • Impacts on wildlife • Impacts on Flora and Fauna • Noise Impacts

	<ul style="list-style-type: none"> • Dust & Air Pollution • Visual Impacts
<i>Support Proposals</i>	<ul style="list-style-type: none"> • Proposals at Peel Common make it safer for pedestrians and cyclists • Will be major step towards reducing congestion in the area • Will improve quality of life in Stubbington and Peel Common
<i>Issues with Traffic Signals</i>	<ul style="list-style-type: none"> • Should be traffic lights at Gosport Road arm of Peel Common Roundabout • Peel Common Roundabout functions without lights • Too many - lights will slow down traffic
<i>Improved Provisions for Non-Motorised Users (NMU) Required</i>	<ul style="list-style-type: none"> • Improves pedestrian and cycle facilities • Needs to be improved cycle facilities between BRT, Newgate Lane and HMS Collingwood • There are no specified bridleways. These are important for horse riders • Improved pedestrian access across the new road between the top end of Woodcote lane and Brookers Fields through to the Peel Common estate
<i>Perceived Impacts on Property</i>	<ul style="list-style-type: none"> • Loss of value so new houses can be built • Proposals weren't shown up when searches on property were carried out • Road too close to property • Increase of highway size could not have been predicted when buying property • Will require compensation
<i>Problems with Consultation</i>	<ul style="list-style-type: none"> • Didn't receive information • No manned exhibitions in Gosport • Homes directly affected should have had individual letters • Circulation was poor
<i>Flooding & Drainage Issues</i>	<ul style="list-style-type: none"> • Area floods after heavy rainfall • Surrounding fields flood • Pleased that drainage has been considered
<i>Works Cause too much Disruption</i>	<ul style="list-style-type: none"> • Peel Common Roundabout should be done at the same time as Newgate Lane • Means the area is disrupted twice • Works will become redundant after Newgate Lane works
<i>Improve other Transport Links</i>	<ul style="list-style-type: none"> • Should be a water link between Portsmouth, Gosport, Lee on Solent and Southampton • Money would be better spent on improved public transport and subsidised ferry travel
<i>Other</i>	<ul style="list-style-type: none"> • Problem is at HMS Collingwood • Emergency Vehicles should use the Newgate Lane bypass • Traffic predictions need to include Fareham College and Daedalus • Don't see why Rowner Road entry requires 3 lanes, No one goes to Lee on Solent from Rowner. Widening only benefits Gosport

A27 Segensworth to Fareham

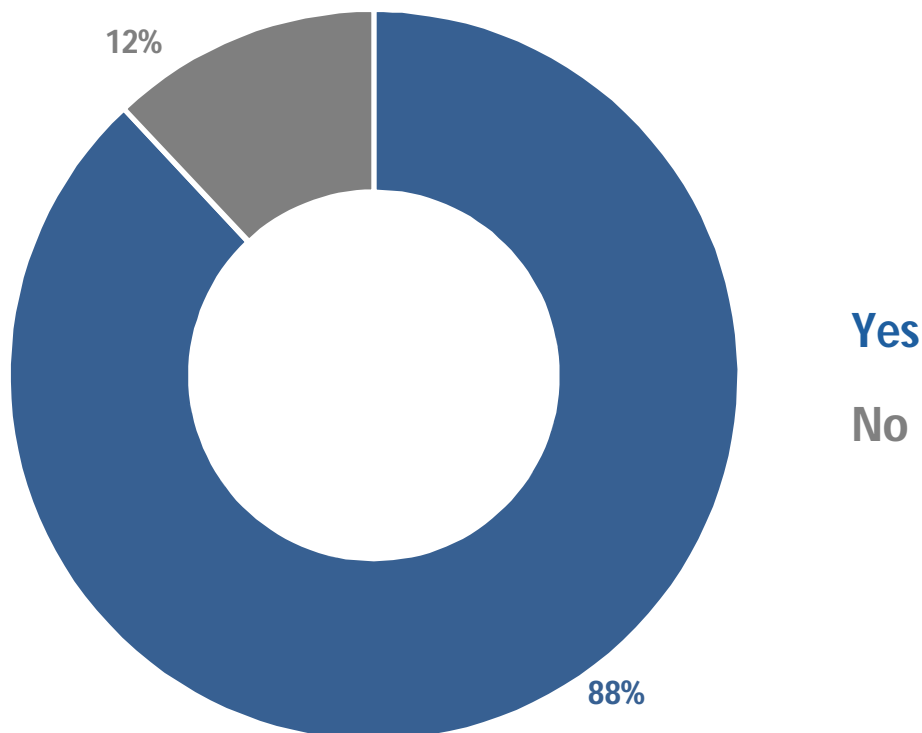
Do you support the following improvements to the A27?

A27 Station roundabout and Gudge Heath Lane junction improvements

Table 17

	Total	Missing/ No reply	Personal view as a member of the public	Representing the views of an organisation
Base	490	36	448	6
Missing/No reply	65 13%	9 25%	54 12%	2 33%
Yes	372 76%	22 61%	347 77%	3 50%
No	53 11%	5 14%	47 10%	1 17%

Figure 11 Personal view as a member of the public who responded to this question



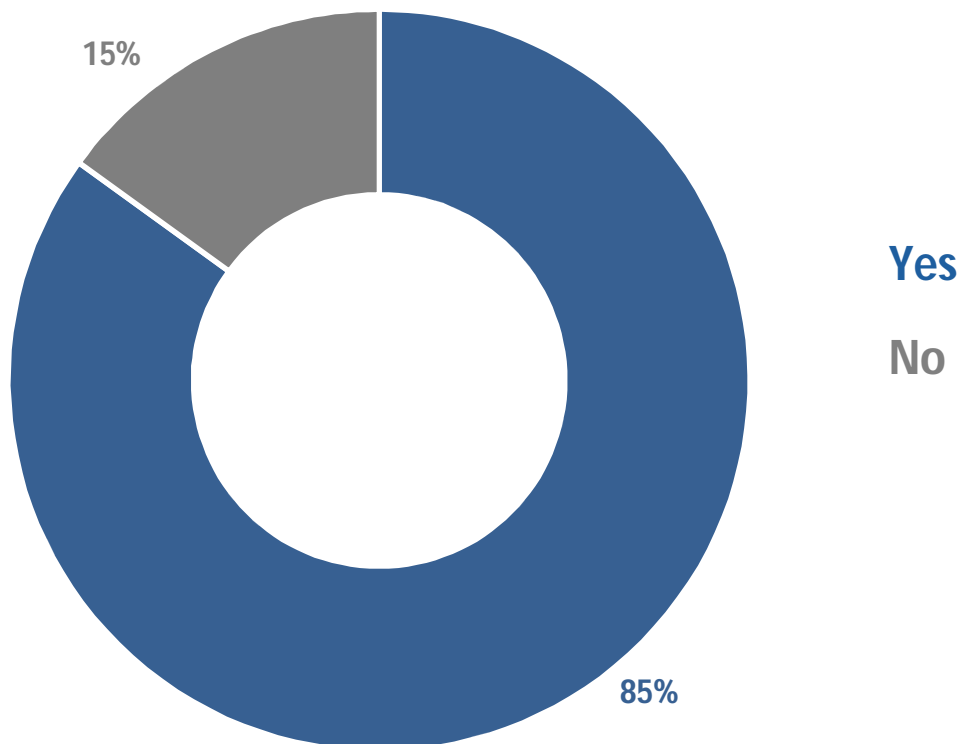
Do you support the following improvements to the A27?

Titchfield Gyratory junction improvements

Table 18

	Total	Missing/No reply	Personal view as a member of the public	Representing the views of an organisation
Base	490	36	448	6
Missing/No reply	64 13%	9 25%	53 12%	2 33%
Yes	358 73%	19 53%	336 75%	3 50%
No	68 14%	8 22%	59 13%	1 17%

Figure 12 Personal view as a member of the public who responded to this question



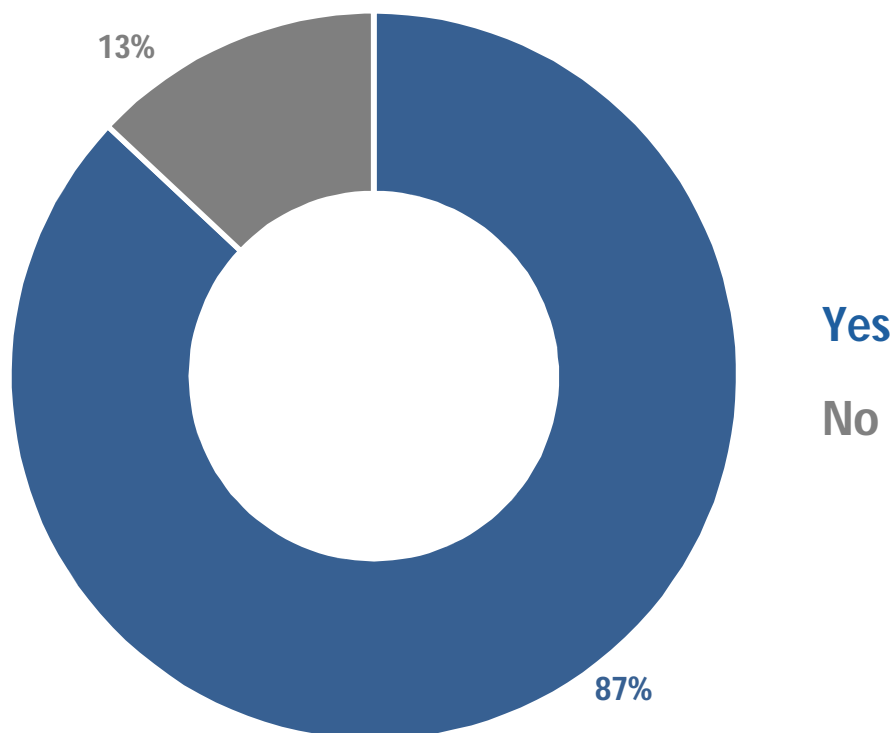
Do you support the following improvements to the A27?

St Margaret's roundabout & Southampton Hill junction improvements

Table 19

	Total	Missing/No reply	Personal view as a member of the public	Representing the views of an organisation
Base	490	36	448	6
Missing/No reply	66 13%	8 22%	56 13%	2 33%
Yes	361 74%	18 50%	340 76%	3 50%
No	63 13%	10 28%	52 12%	1 17%

Figure 13 Personal view as a member of the public who responded to this question



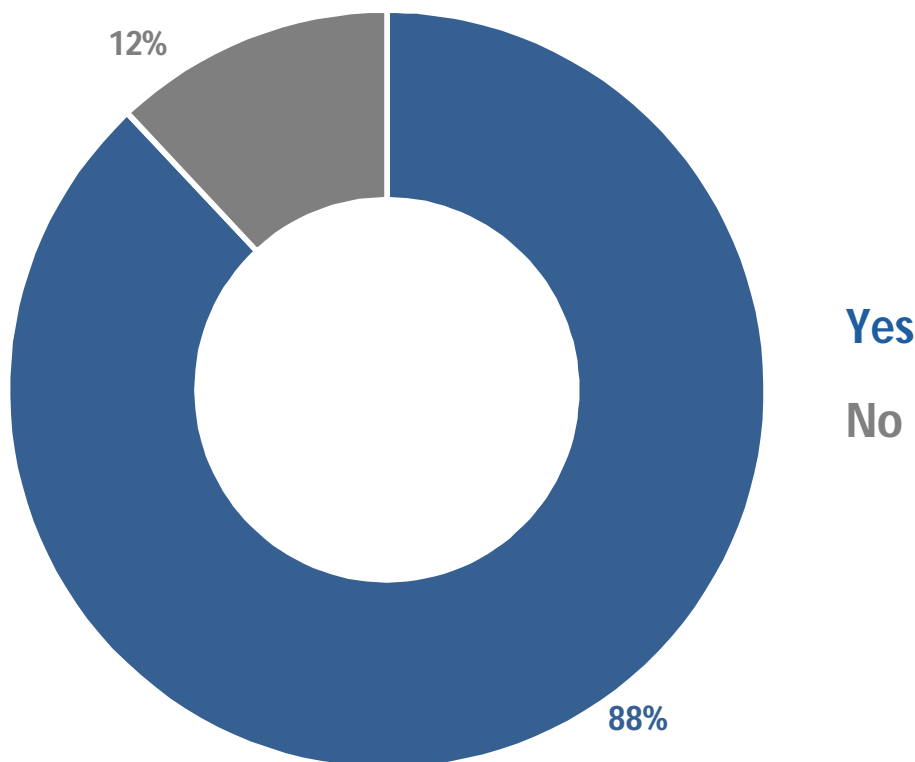
Do you support the following improvements to the A27?

Dualling the single carriageway sections of the A27 between Titchfield Gyratory and Segensworth roundabout

Table 20

	Total	Missing/No reply	Personal view as a member of the public	Representing the views of an organisation
Base	490	36	448	6
Missing/No reply	60 12%	9 25%	49 11%	2 33%
Yes	370 76%	16 44%	351 78%	3 50%
No	60 12%	11 31%	48 11%	1 17%

Figure 14 Personal view as a member of the public who responded to this question



Comments – A27 Segensworth to Fareham

Figure 15

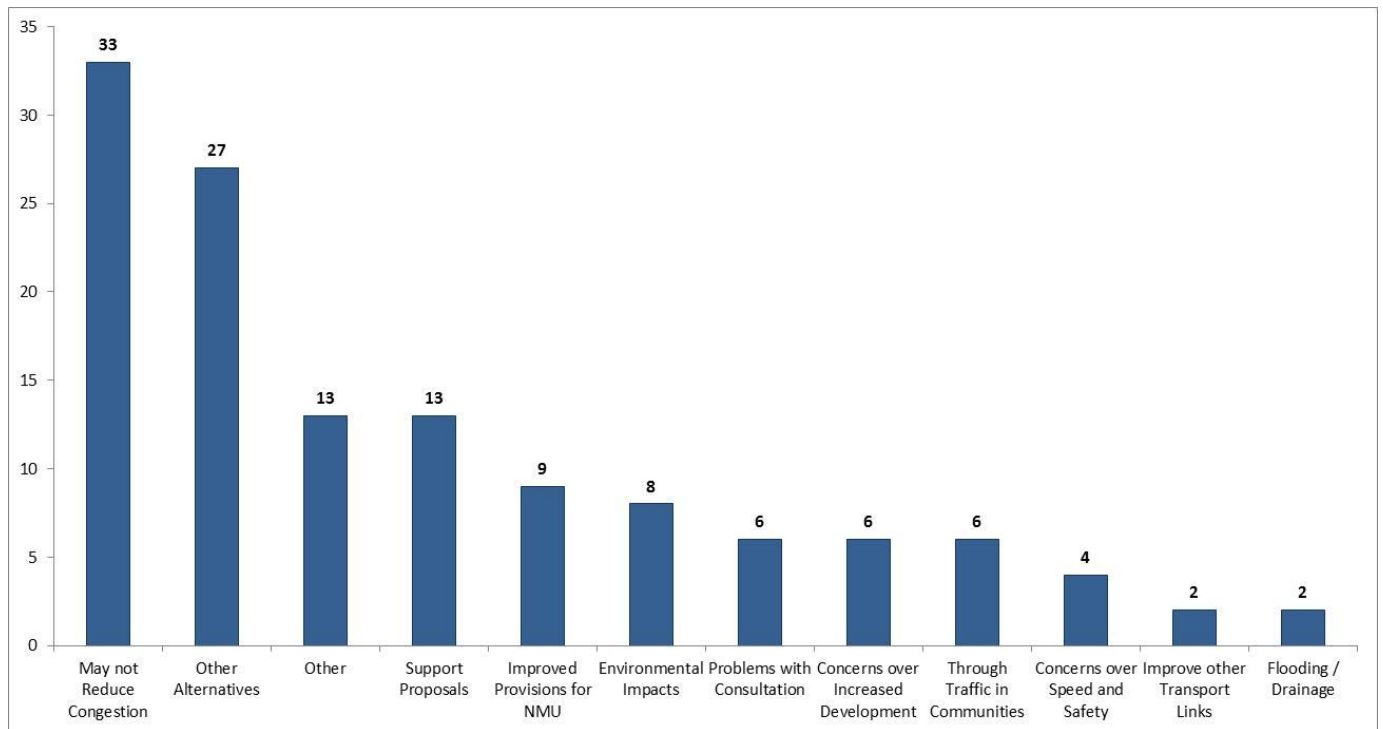


Table 21

Category	Typical Responses
<i>May not Reduce Congestion</i>	<ul style="list-style-type: none"> • Quay Street / Tesco Roundabout is the main cause of congestion along A27 • There will be a bottleneck at Titchfield gyratory once all the other improvements have taken place • Too many traffic lights along A27 • Improvements will only work if they are all delivered (Stubbington bypass, A27 and Newgate Lane) • Needs to be improvements on roads from M27 Jct 9 • Concerns over perceived bottlenecks at Fareham viaduct and Titchfield • Station Roundabout needs improvement. Causes congestion
<i>Other Alternatives</i>	<ul style="list-style-type: none"> • Flyover to Junction 9A of M27 at Titchfield gyratory • Flyover from Newgate lane to Broomway, Road from Cartwright Drive to M27 and Flyover east to west at the Tesco roundabout • Build flyover from A27 to M27 (eastbound) and from A32 to M27 • Improve Fareham Quays / Tesco roundabout • Traffic light timings need to be improved at the A27 / B3334 Titchfield Road junction

	<ul style="list-style-type: none"> • Signalled junction from East Street required, otherwise it will be difficult to get out. • Improvements required on Titchfield Gyratory. Could incorporate a slip road onto M27 from Southampton Hill • Junction 11 of M27 should only be access to Gosport
<i>Support Proposals</i>	<ul style="list-style-type: none"> • Improvement to the roads will be positive • Reduction in congestion is urgently needed • Generally in favour • Satisfied with the majority of the works
<i>Improved Provisions for Non-Motorised Users (NMU) Required</i>	<ul style="list-style-type: none"> • Better pedestrian crossings are required • Cycle lanes required on both sides of A27 • Cycle network from Stubbington to Fareham station / town centre required • Lanes need to be wide enough to be able to fit busses/HGV's, cars and cyclists on comfortably • Cycle facilities are currently poor from Segensworth / Locks Heath / Titchfield to Fareham Station • Please consult with cycling organisations (Sustrans etc.)
<i>Environmental Impacts</i>	<ul style="list-style-type: none"> • Use road surface that reduces traffic noise • Too many cars on the road. Causes pollution • Loss of trees • Noise and Air pollution at schools • Loss of green space • Increases noise • Damage to old buildings (loss of local heritage)
<i>Problems with Consultation</i>	<ul style="list-style-type: none"> • Insufficient information about the proposals from Titchfield to M27 J9 • Exhibitions inaccessible • Information full with jargon and technical terms • Information difficult to take in • No manned exhibitions in Gosport • Information doesn't address lack of capacity on M27 • Consultation staff and planners lack local knowledge
<i>Concerns over Increased Development</i>	<ul style="list-style-type: none"> • Improvements will be pointless if development increases • Existing farm land will be used for development • Will encourage development in the area • Will urbanise the area • Loss of green space to development
<i>Through Traffic in Communities</i>	<ul style="list-style-type: none"> • People will use Warsash Road, Occupation Lane, Coach Hill, Bridge Street or Titchfield Road • Rat running through Titchfield Village
<i>Concerns over Speed and Safety</i>	<ul style="list-style-type: none"> • St Margaret's Lane has a 60mph speed limit which encourages dangerous driving • Feels unsafe when M27 J11 traffic merges with A27 • Cars merge over chevrons when joining A27 from M27 / Delme Arms roundabout • Dual carriageways will encourage speeding

<i>Improve other Transport Links</i>	<ul style="list-style-type: none"> • Should be spending money on greener public transport solutions • There is congestion because there is no viable public transport
<i>Flooding & Drainage Issues</i>	<ul style="list-style-type: none"> • Land above Titchfield Road & the gyratory has springs and is prone to landslides • There is regular flooding at Bridge Road traffic lights
<i>Other</i>	<ul style="list-style-type: none"> • Problems with queuing in bus lanes and chevrons on the A27 • Confusion about what the junction works with Southampton hill / A27 actually entail • Need to improve conflict between cars and BRT. • There will be trouble getting out of Titchfield • Works between gyratory and M27 not needed • Grudge Heath Lane jct should have been done years ago

Other Comments (Non-Scheme/Location Specific or Unrelated to Access to Fareham and Gosport Proposals)

Figure 16

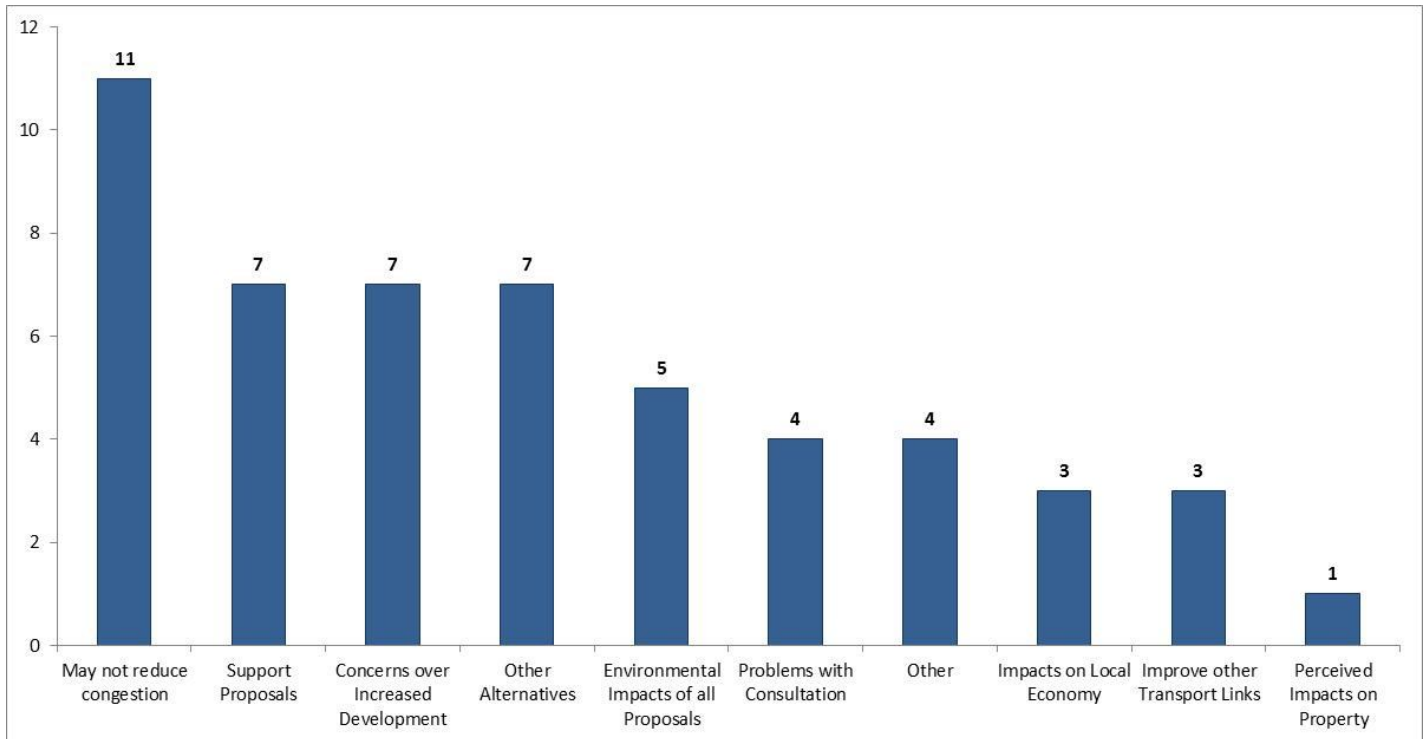


Table 22

Category	Typical Responses
<i>May not Reduce Congestion</i>	<ul style="list-style-type: none"> • Works will not make any difference • Congestion will only get worse • Congestion won't get worse • New schools and businesses will create more congestion • Will just move congestion • Works not big enough, could just move congestion elsewhere
<i>Support Proposals</i>	<ul style="list-style-type: none"> • Would like all works to start ASAP • Should have been done along time ago • Get done soon to minimise disruption • Improvements Welcome
<i>Concerns over Increased Development</i>	<ul style="list-style-type: none"> • Improvements are to aid development, not deal with current problem • New houses will add to congestion • Lots of houses, no local jobs
<i>Other Alternatives</i>	<ul style="list-style-type: none"> • Bypass Fareham

	<ul style="list-style-type: none"> • Open up BRT to other road users • Connect Gosport to Portsmouth (bridge or tunnel) • Utilise harbour
<i>Environmental Impacts of all Proposals</i>	<ul style="list-style-type: none"> • Noise Pollution • Landscape Impacts • Wildlife Impacts • Air Pollution • Desire to retain 'Green Strategic Gap' • Visual Impact
<i>Problems with Consultation</i>	<ul style="list-style-type: none"> • Consultation doesn't fully represent views of Fareham • Exhibition is poorly advertised • Information and statistics are difficult to understand
<i>Impacts on Local Economy</i>	<ul style="list-style-type: none"> • More jobs required in the area • Impacts on local businesses • Perceived loss of trade
<i>Improve other Transport Links</i>	<ul style="list-style-type: none"> • better links to Portsmouth, Soton, Winchester & London • Gosport ferry too expensive • Open up the railway
<i>Perceived Impacts on Property</i>	<ul style="list-style-type: none"> • All of the plans are close to peoples houses
<i>Other</i>	<ul style="list-style-type: none"> • Roads out of Lee-on-the-Solent need improving • Compliments on consultation process • Pleased to see improved pedestrian and cycle facilities

Technical Appendix

1. Copy questionnaire
2. Newspaper media coverage
3. Distribution of attendees at officer-led exhibitions
4. Tables containing ALL responses from both members of the public and organisations
5. Additional feedback

Appendix 1 Copy questionnaire

Comments

Please provide any additional comments you would like to be taken into consideration:

About you

Postcode

For analysis only - will not be used to identify your address

In what capacity are you responding to this consultation?

- Personal view as a member of the public (Please complete the equalities questions)
 Representing the views of an organisation (No need to complete the equalities questions)

Name of organisation

Equalities information - these questions are optional

Age

- 17 years or less
 18 - 24
 25 - 34
 35 - 44
 45 - 54
- 55 - 64
 65 - 74
 75+
 Prefer not to say

Gender

- Male
 Female
 Prefer not to say

Do you consider yourself to be disabled?

- Yes
 No
 Prefer not to say

Thank you - please post your completed questionnaire in the box provided. If you prefer to complete it later, please take a FREEPOST envelope in which to return it.



Information you have supplied is subject to the terms and conditions of the Data Protection Act 1998.



consultation questionnaire



If you need this document in another language or large print,
please phone 0845 603 5633



Do you support the overall approach set out at the exhibition towards improving Access to Fareham and Gosport?

Yes No *Please say why overleaf*

Stubbington Bypass

Do you support the preferred route for a Stubbington Bypass?

Yes No *Please say why overleaf*

How satisfied are you that the issues below have been taken into account in the assessment work so far? Please tick one box on each line

	Very satisfied	Satisfied	Neutral	Dissatisfied	Very dissatisfied	Don't know
Traffic	<input type="radio"/>	<input type="radio"/>	<input type="radio"/>	<input type="radio"/>	<input type="radio"/>	<input type="radio"/>
Drainage	<input type="radio"/>	<input type="radio"/>	<input type="radio"/>	<input type="radio"/>	<input type="radio"/>	<input type="radio"/>
Environment	<input type="radio"/>	<input type="radio"/>	<input type="radio"/>	<input type="radio"/>	<input type="radio"/>	<input type="radio"/>
Ecology	<input type="radio"/>	<input type="radio"/>	<input type="radio"/>	<input type="radio"/>	<input type="radio"/>	<input type="radio"/>
Landscape	<input type="radio"/>	<input type="radio"/>	<input type="radio"/>	<input type="radio"/>	<input type="radio"/>	<input type="radio"/>
Proximity to residential properties	<input type="radio"/>	<input type="radio"/>	<input type="radio"/>	<input type="radio"/>	<input type="radio"/>	<input type="radio"/>
Design	<input type="radio"/>	<input type="radio"/>	<input type="radio"/>	<input type="radio"/>	<input type="radio"/>	<input type="radio"/>
Access for pedestrians /cyclists/horse riders	<input type="radio"/>	<input type="radio"/>	<input type="radio"/>	<input type="radio"/>	<input type="radio"/>	<input type="radio"/>

The preferred route crosses some existing public rights of way. We are working with HCC Countryside Service Access Team to understand whether local people at Stubbington want new or improved local pedestrian, cycle and/or bridleway access. It may be possible to deliver some improvements in conjunction with the scheme.

Please indicate which type(s) of route you might want and where Please tick as many as apply on each line

	Walking	Cycles	Bridleways	Don't know / No opinion
Circular routes	<input type="radio"/>	<input type="radio"/>	<input type="radio"/>	<input type="radio"/>
Routes connecting Titchfield Road to Gosport Road	<input type="radio"/>	<input type="radio"/>	<input type="radio"/>	<input type="radio"/>
Routes connecting Titchfield Road to Peak Lane	<input type="radio"/>	<input type="radio"/>	<input type="radio"/>	<input type="radio"/>
Routes connecting Titchfield Road to Newgate Lane	<input type="radio"/>	<input type="radio"/>	<input type="radio"/>	<input type="radio"/>
Routes connecting Longfield Avenue to Newgate Lane	<input type="radio"/>	<input type="radio"/>	<input type="radio"/>	<input type="radio"/>
Routes connecting Longfield Avenue to Gosport Road	<input type="radio"/>	<input type="radio"/>	<input type="radio"/>	<input type="radio"/>

For more information about the consultation or to complete the questionnaire online, go to:

Closing date for the receipt of questionnaires

Newgate Lane Southern Section

Do you support the preferred route for the southern section of Newgate Lane?

Yes No *Please say why overleaf*

How satisfied are you that the issues below have been taken into account in the assessment work so far? Please tick one box on each line

	Very satisfied	Satisfied	Neutral	Dissatisfied	Very dissatisfied	Don't know
Traffic	<input type="radio"/>	<input type="radio"/>	<input type="radio"/>	<input type="radio"/>	<input type="radio"/>	<input type="radio"/>
Drainage	<input type="radio"/>	<input type="radio"/>	<input type="radio"/>	<input type="radio"/>	<input type="radio"/>	<input type="radio"/>
Environment	<input type="radio"/>	<input type="radio"/>	<input type="radio"/>	<input type="radio"/>	<input type="radio"/>	<input type="radio"/>
Ecology	<input type="radio"/>	<input type="radio"/>	<input type="radio"/>	<input type="radio"/>	<input type="radio"/>	<input type="radio"/>
Landscape	<input type="radio"/>	<input type="radio"/>	<input type="radio"/>	<input type="radio"/>	<input type="radio"/>	<input type="radio"/>
Proximity to residential properties	<input type="radio"/>	<input type="radio"/>	<input type="radio"/>	<input type="radio"/>	<input type="radio"/>	<input type="radio"/>
Design	<input type="radio"/>	<input type="radio"/>	<input type="radio"/>	<input type="radio"/>	<input type="radio"/>	<input type="radio"/>
Access for pedestrians /cyclists/horse riders	<input type="radio"/>	<input type="radio"/>	<input type="radio"/>	<input type="radio"/>	<input type="radio"/>	<input type="radio"/>

If you are a resident of Newgate Lane, Woodcote Lane or Albert Road please answer the following question:

As there will be a new junction to Newgate Lane from the new road, how would you like to see the existing entry from Peel Common roundabout managed?

Full access for all as it is now No access except for emergency vehicles No entry (except buses and cyclists)

Peel Common Roundabout

Do you support the planned improvements to Peel Common roundabout programmed for 2015/16?

Yes No

A27 Segensworth to Fareham

Do you support the following improvements to the A27?

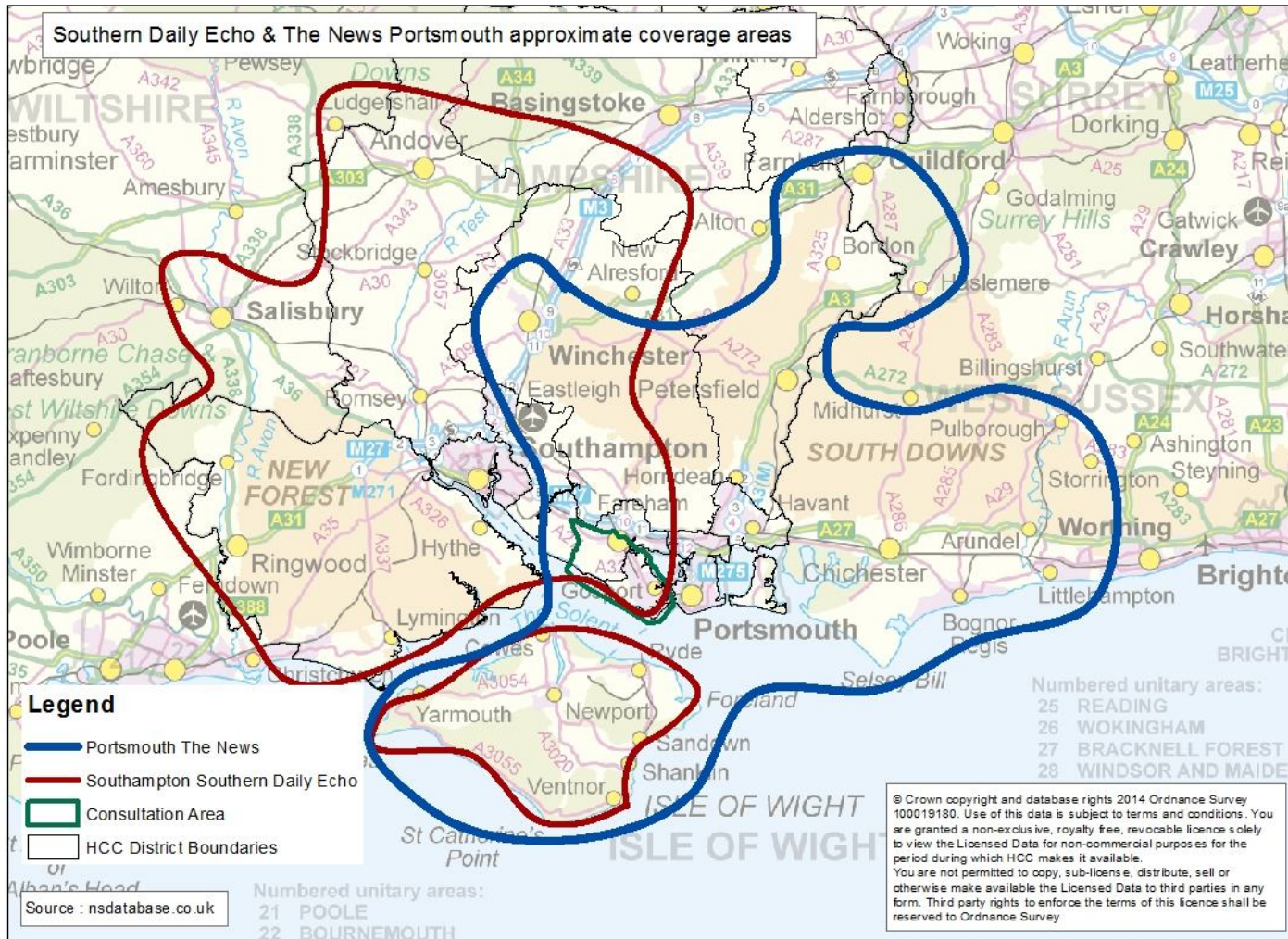
	Yes	No
A27 Station roundabout & Gudge Heath Lane junction improvements	<input type="radio"/>	<input type="radio"/>
Titchfield Gyratory junction improvements	<input type="radio"/>	<input type="radio"/>
St Margaret's roundabout & Southampton Hill junction improvements	<input type="radio"/>	<input type="radio"/>
Dualling the single cartage way sections of the A27 between Titchfield Gyratory and Segensworth roundabout	<input type="radio"/>	<input type="radio"/>

www.hants.gov.uk/stubbingtonbypass

Monday, 4 August 2014

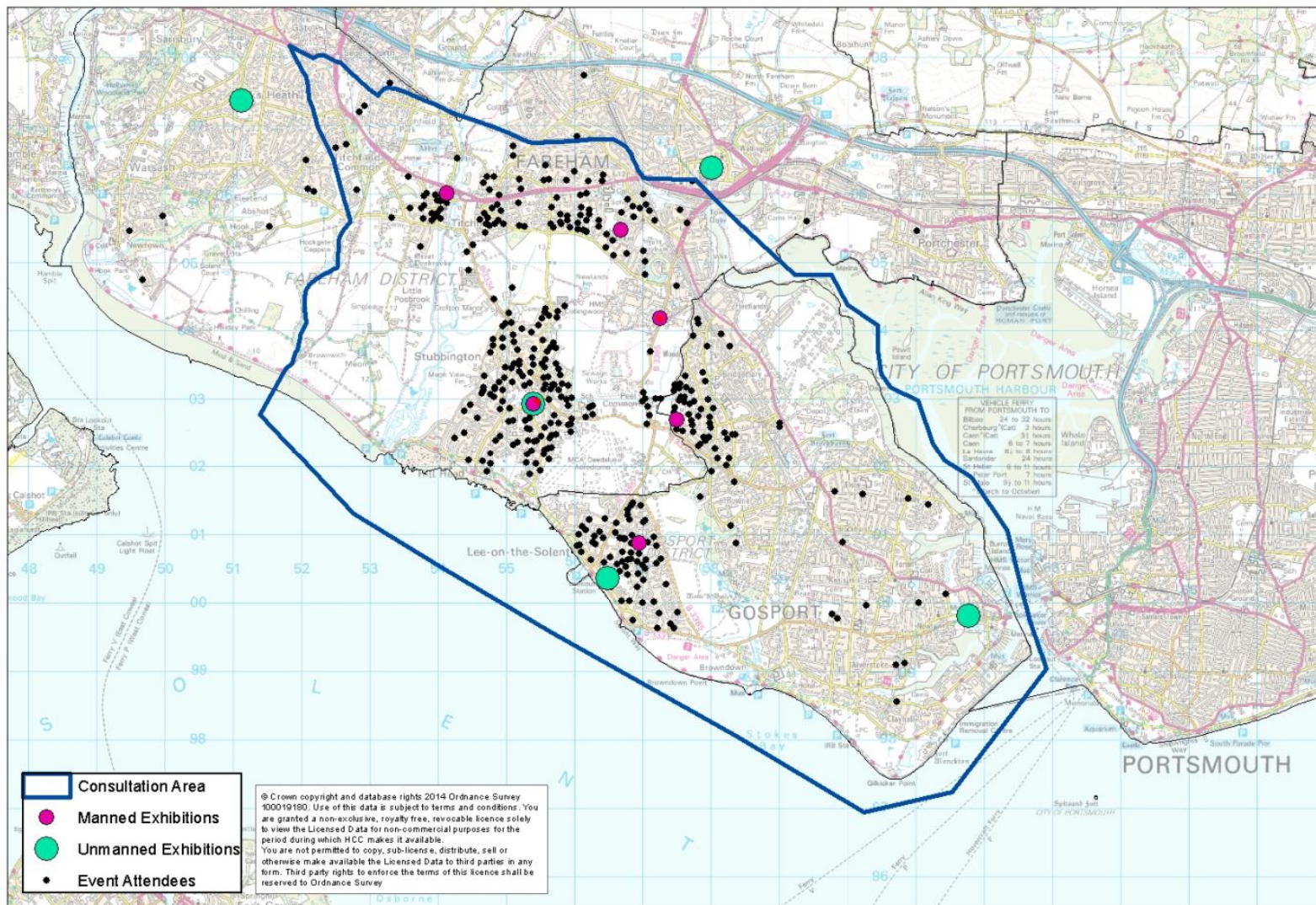
Please turn over

Appendix 2. Newspaper media coverage



Appendix 3. Officer-led exhibitions attendee distribution

(Event Attendee points are postcode centroids and do not represent individual responses)



Appendix 4. Tables containing ALL responses from both members of the public and organisations

Stubbington Bypass

Do you support the preferred route for Stubbington Bypass?

Base	490 100%
Missing/No reply	58 12%
Yes	320 65%
No	112 23%

Stubbington Bypass How satisfied are you that the issues below have been taken into account in the assessment work so far?

	Total	Missing/No reply	Very satisfied	Satisfied	Neutral	Dissatisfied	Very dissatisfied	Don't know
Base	3920	359 9%	352 9%	1470 38%	745 19%	281 7%	450 11%	263 7%
Traffic	490	43 9%	49 10%	225 46%	49 10%	43 9%	64 13%	17 3%
Drainage	490	47 10%	44 9%	176 36%	104 21%	29 6%	28 6%	62 13%
Environment	490	43 9%	45 9%	191 39%	87 18%	37 8%	60 12%	27 6%
Ecology	490	48 10%	41 8%	176 36%	102 21%	35 7%	49 10%	39 8%
Landscape	490	49 10%	46 9%	165 34%	104 21%	37 8%	60 12%	29 6%
Proximity to residential properties	490	43 9%	41 8%	167 34%	102 21%	30 6%	86 18%	21 4%
Design	490	42 9%	38 8%	193 39%	106 22%	32 7%	48 10%	31 6%
Access for pedestrians /cyclists/horse riders	490	44 9%	48 10%	177 36%	91 19%	38 8%	55 11%	37 8%

Stubbington Bypass

The preferred route crosses some existing public rights of way. We are working with HCC Countryside Services Access Team to understand whether local people at Stubbington want new or improved local pedestrian, cycle and/or bridleway access. It may be possible to deliver some improvements in conjunction with the scheme.

Please indicate which type(s) of route you might want and where

	Total	Missing/No reply	Walking	Cycles	Bridleways	Don't know / No opinion
Base	2940	522 18%	1111 38%	1299 44%	233 8%	864 29%
Circular routes	490	84 17%	220 45%	197 40%	54 11%	138 28%
Routes connecting Titchfield Road to Gosport Road	490	95 19%	176 36%	220 45%	40 8%	140 29%
Routes connecting Titchfield Road to Peak Lane	490	79 16%	195 40%	223 46%	45 9%	138 28%
Routes connecting Titchfield Road to Newgate Lane	490	87 18%	180 37%	234 48%	34 7%	137 28%
Routes connecting Longfield Avenue to Newgate Lane	490	90 18%	176 36%	217 44%	29 6%	150 31%
Routes connecting Longfield Avenue to Gosport Road	490	87 18%	164 33%	208 42%	31 6%	161 33%

Newgate Lane Southern Section

Do you support the preferred route for the southern section of Newgate Lane?

Base	490
Missing/No reply	57 12%
Yes	340 69%
No	93 19%

Newgate Lane Southern Section

How satisfied are you that the issues below have been taken into account in the assessment work so far?

	Total	Missing/No reply	Very satisfied	Satisfied	Neutral	Dissatisfied	Very dissatisfied	Don't know
Base	3920	518 13%	407 10%	1406 36%	753 19%	158 4%	352 9%	326 8%
Traffic	490	60 12%	65 13%	208 42%	51 10%	32 7%	53 11%	21 4%
Drainage	490	65 13%	46 9%	169 34%	100 20%	15 3%	28 6%	67 14%
Environment	490	65 13%	49 10%	177 36%	93 19%	23 5%	44 9%	39 8%
Ecology	490	67 14%	46 9%	171 35%	102 21%	15 3%	40 8%	49 10%
Landscape	490	66 13%	51 10%	164 33%	108 22%	16 3%	45 9%	40 8%
Proximity to residential properties	490	62 13%	49 10%	164 33%	111 23%	17 3%	56 11%	31 6%
Design	490	64 13%	51 10%	178 36%	105 21%	16 3%	44 9%	32 7%
Access for pedestrians /cyclists/horse riders	490	69 14%	50 10%	175 36%	83 17%	24 5%	42 9%	47 10%

Peel Common Roundabout

Do you support the planned improvements to Peel Common Roundabout programmes for 2015/16?

Base	490 100%
Missing/No reply	61 12%
Yes	354 72%
No	75 15%

A27 Segensworth to Fareham

Do you support the following improvements to the A27?

A27 Station roundabout and Gudge Heath Lane junction improvements

Base	490 100%
Missing/No reply	65 13%
Yes	372 76%
No	53 11%

Titchfield Gyrotory junction improvements

Base	490 100%
Missing/No reply	64 13%
Yes	358 73%
No	68 14%

St Margaret's roundabout & Southampton Hill junction improvements

Base	490 100%
Missnig/No reply	66 13%
Yes	361 74%
No	63 13%

Dualling the single carriageway sections of the A27 between Titchfield Gyratory and Segensworth roundabout

Base	490 100%
Missing/No reply	60 12%
Yes	370 76%
No	60 12%

If you are a resident of Newgate Lane, Woodcote Lane or Albert Road please answer the following question:

As there will be a new junction to Newgate Lane from the new road, how would you like to see the existing entry from Peel Common roundabout managed?

All Responses

	Total	Missing/No Reply	Personal view as a member of the public	Representing the views of an organisation
Base	490	36	448	6
Missing/No reply	425 87%	33 92%	387 86%	5 83%
Full access for all as it is now	33 7%	2 6%	30 7%	1 17%
No access except for emergency vehicles	12 2%	- -	12 3%	- -
No entry (except buses and cyclists)	20 4%	1 3%	19 4%	- -

Appendix 5. Additional feedback

Additional Response Type	Description
Late Responses	A cut off date of 7th August was allowed for postal delays. 4 paper questionnaires were received in the post after this date.
Formal Responses	2 formal responses were received from Fareham Borough Council and Gosport Borough Council
Petition	151 Signatories to "The Stubbington Bypass - A road to nowhere" petition (Originating group/individual unknown - received with no covering letter)
Email	7 email responses were received outside of the official consultation channels of response