

Aim and objectives

Services for everyone

ADULT AND COMMUNITY LEARNING

AIM

Create a varied portfolio of area-based learning opportunities for adults to support skills development, improved life chances and wellbeing

Targeted

Outcome

Offer a broad range of informal learning opportunities, provide local choice (particularly for **older people** and **people in rural areas**) and provide coordinated, easy to obtain information to learners

Outcome

Provide targeted learning opportunities to support the attainment and life chances of **adults who are disadvantaged** and develop the countywide provision of basic literacy, numeracy and ICT skills for adults in Hampshire

Measure

Adults have improved access to learning opportunities locally and take-up is increased
Participation
Satisfaction

Measure

Access inequalities are reduced through targeted learning
Case studies
Participation
Referrals

Service planning objectives: How will we do this?

We will:

1. plan and develop in partnership new ways of achieving a local offer for adult learning that meets local needs
2. tailor programming in response to the needs of particular groups (particularly older people's needs)
3. ensure information about learning activity for adults is coordinated and shared

We will:

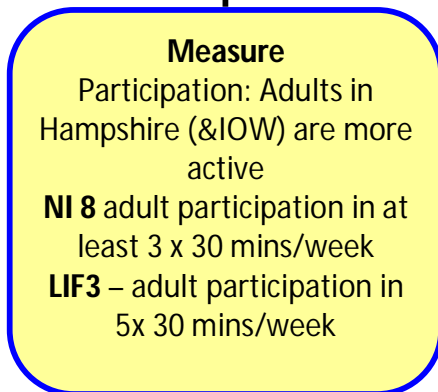
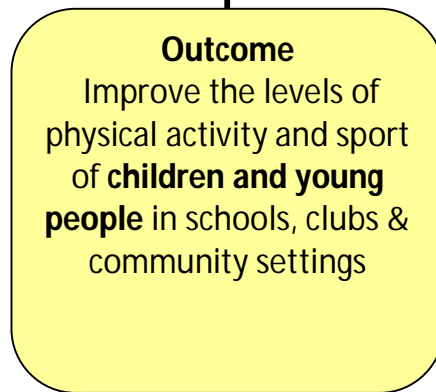
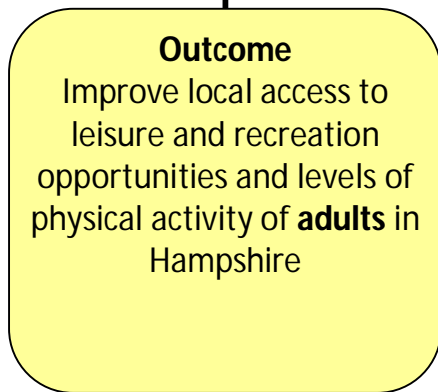
1. plan and deliver targeted programmes in partnership in response to referral of customer groups

Aim and objectives

Services for everyone

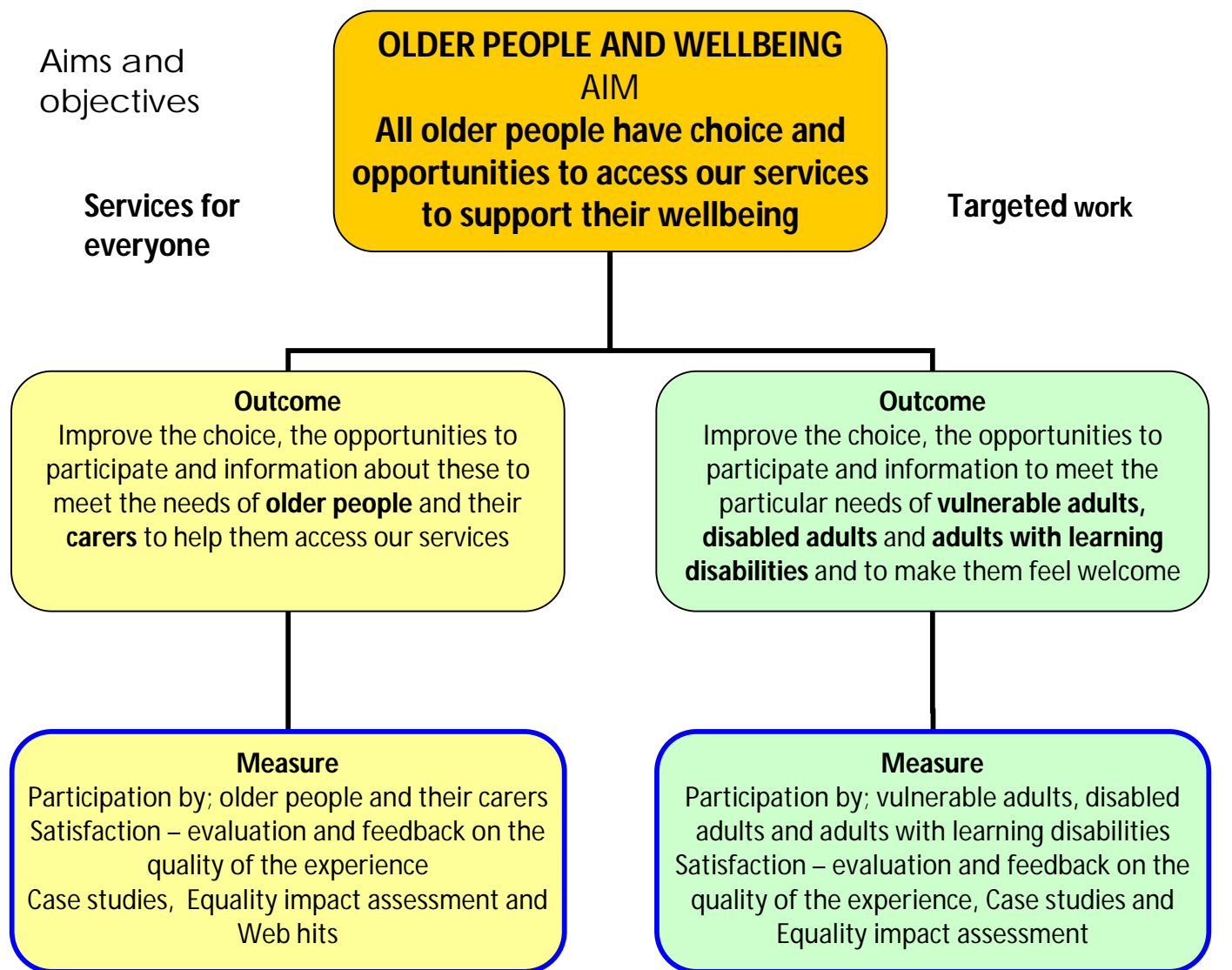


Targeted work



Service planning objectives: How will we do this?

<p>We will:</p> <ol style="list-style-type: none">1. provide easy to obtain information about access to recreation and sport	<p>We will :</p> <ol style="list-style-type: none">1. support the development and implementation of the Play Strategy2. work in partnership to tackle unhealthy weight in 24 LPSA schools3. improve access to recreational & sport opportunities through the sport & physical activities 5 hour offer	<p>We will:</p> <ol style="list-style-type: none">1. support the Aiming High programme for Disabled Children2. undertake targeted work with under-represented groups
---	--	--



Service planning objectives: How will we do this?

<p>We will:</p> <ol style="list-style-type: none"> 1. provide information on the full range of CCRA services that is coordinated, relevant and easily available 2. tailor CCRA activities and events to meet older people's needs – a wider choice 3. work in partnership with others and with older people to improve our services to meet the needs of older people and carers 	<p>In addition to 1 – 3 we will :</p> <ol style="list-style-type: none"> 1. develop our skills through training and working in partnership to improve the way we welcome and work with groups with special needs
---	---

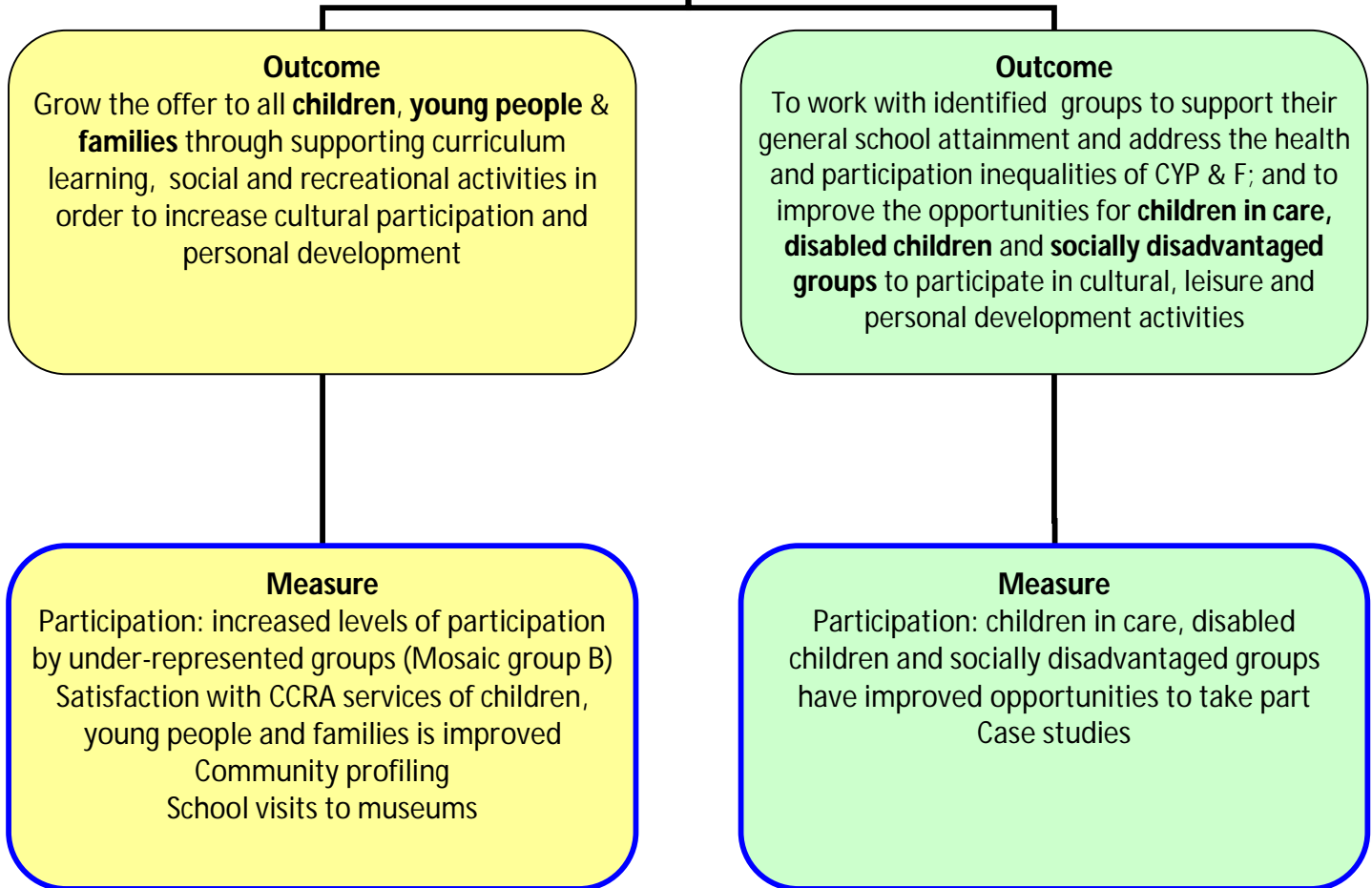
Note – Measures to be defined. Data from the Place Survey, Active People, service-based surveys

Aim and objectives

Services for everyone



Reducing inequalities: targeted interventions



Service planning objectives: How will we do this?

<p>We will:</p> <ol style="list-style-type: none">1. improve our service offer for these groups by working with customers and partners to achieve service improvement2. will improve and strengthen our service offer by increasing the number of opportunities to take part, working in schools, clubs and community settings as well as in CCRA facilities	<p>We will:</p> <ol style="list-style-type: none">1. improve our service offer by working with partners to develop priority work for identified groups as appropriate to each constituency
--	---

Aim and objectives

Services for everyone

Targeted work

LOCALITY WORKING AND ACTION FOR DEPRIVED URBAN COMMUNITIES

AIM:

Reduce disparities in participation in cultural activities and sport

Outcome

To address disparities in participation in cultural activities and sport (particularly in deprived urban communities) to grow aspirations and support community development and cohesion

Outcome

To address disparities in participation in cultural activities and sport in the 3 identified corporate priority areas – Havant, Gosport and Rushmoor

Measure

Participation: inequalities of access to and participation in the cultural offer are reduced

Measure

Participation: inequalities of access to and participation in the cultural offer are reduced in the 3 target areas
Case studies

Service planning objectives: How will we do this?

This is a corporate work stream. The service planning actions for the CCRA services will be embedded within the other Themes of the CCRA Business Plan

We will:

- 1. work in partnership with the HATS to respond to identified low levels of performance in local areas
- 2. develop improved opportunities to access our services making use of market intelligence

We will:

- 1. coordinate targeted work programmes in Havant, Gosport and Rushmoor

Aim and objectives

RURAL HAMPSHIRE

Aim

Enhance the sustainability of rural communities and the stewardship of the natural environment and heritage of rural Hampshire

Services for everyone

Targeted work

Outcome

To enhance and conserve the rural environment and heritage of Hampshire so that it can be enjoyed by everyone

Outcome

To improve access to CCRA services in Hampshire's rural areas according to the particular requirements of the locality

Outcome

Improve access to CCRA services according to the needs of **people living and working in rural areas** - especially older and younger people

Measure

Satisfaction - rural Hampshire is conserved for everyone to enjoy

Measure

Participation - people living in Hampshire have improved access to CCRA services

Measure

The opportunities to **participate** for local people are increased and people are more **satisfied**

Service planning objectives: How will we do this?

We will :

1. Local people, voluntary and community organisations work together to provide activities and programmes supported by CCRA
2. work with our partners and customers to identify **customer needs and barriers to access by locality**
3. We will make **information** about access to CCRA services in rural areas easy to obtain, targeted and coordinated

We will:

1. **support community development** by forming partnerships with local people, volunteers and local organisations
2. work with local people, volunteers, organisations and our partners **to identify their needs and barriers to access** to design and implement new ways to meet requirements

Note: the term 'rural environment' includes the community as well as the natural environment

Aim and objectives

Services for everyone

2012 CULTURAL LEGACY

Aim

Use the inspiration of the 2012 London Olympics to increase participation by children, young people and adults in culture and sport

Targeted work

Outcome

To create a lasting and sustainable legacy of increased participation through developing a programme of 2012 inspired participatory activities for the next 3 years providing opportunities for **children, young people and adults** to "create, compete and collaborate"

Outcome

To create a lasting and sustainable legacy of increased participation by removing the barriers faced by **disabled people** and increasing the opportunities for disabled people to "create, compete and collaborate " to encourage them to participate

Measure

2012 has a lasting and sustainable legacy of increased cultural and sports participation for children, young people and adults
Participation: in 2012 events and in sport and cultural activities

Measure

2012 has a lasting and sustainable legacy of increased cultural and sports participation for disabled children, young people and adults
Case studies

Service planning objectives: How will we do this?

We will:

1. work in partnership with the 2012 Legacy corporate coordinator to support the development of a sustainable programme of cultural legacy activities

We will:

1. work in partnership with the 2012 Legacy corporate coordinator to support the development of a sustainable programme of specific projects that involve disabled people
2. by working in partnership with districts and community organisations to involve disabled people