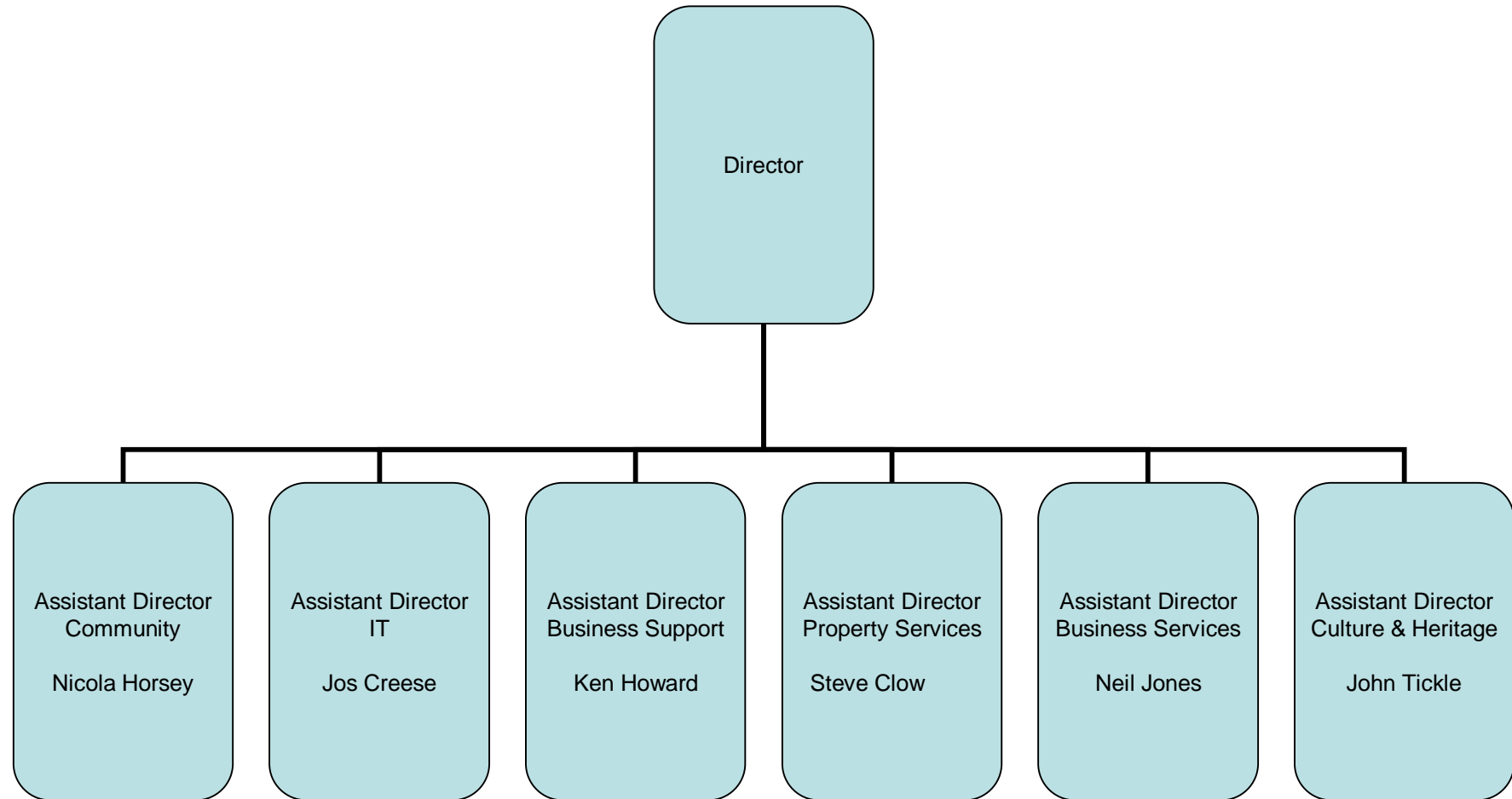


New Department of:

- Culture, Communities and Business Services came into effect on 1 April
- Merger went very smoothly
- New leaner DMT had been operating in a shadow capacity since mid-February

New DMT



This function contains approximately 1600 staff, the majority are based within Hampshire Catering Services (HC3S) and are part time resources.

Business Services

Corporate Procurement, & County Supplies

Hampshire Scientific Services

HC3S (Catering Services)

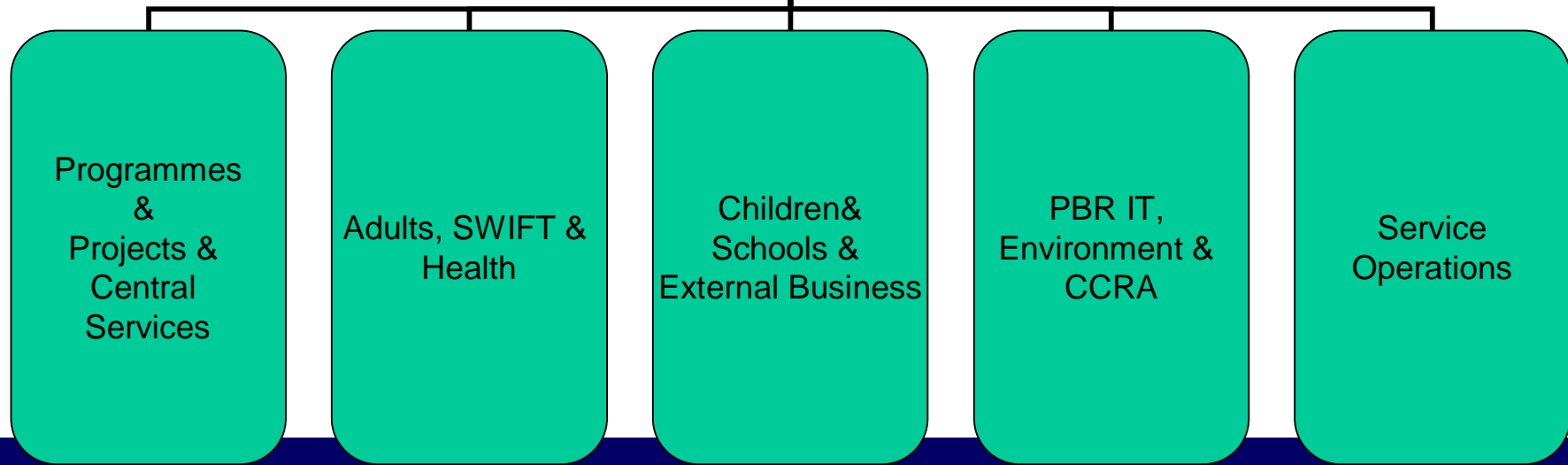
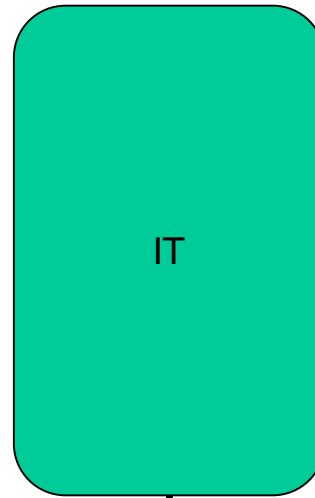
Hampshire Transport Management

Hampshire Printing Services & Sign Workshop



Hampshire
County Council

This function contains approximately 430 staff, Majority of staff hold professional and technical roles .



This function contains approximately 380 staff, The majority of staff hold professional and technical roles .

Property Services

Assets & Development

Programmes & Performance

Design & Implementation



Hampshire
County Council

This function contains approximately 570 staff, The majority of resource here are operational and provide customer facing 'choose to use' services

Visitor & Heritage

Great Hall,
Hillier's
Country
Park Venues
&
Outdoor centres

Museums
&
Arts

Archive Records

Countryside
& Rural
Services

(Rights of way
Rights of way
Maintenance
Basingstoke
Canal)

River Hamble



Hampshire
County Council

This function contains approximately 1000 staff. The majority of staff exist within Library service and are part time resources. Statutory and regulatory services will form part of this function.



This function contains approximately 280 staff across a range of strategic and tactical provision both departmentally and corporately.

Business Support

Facilities Management

Workstyle & Capital Strategy

Administration & Democratic Services

Business Development
(Learning & Development)

Health, Risk & Safety Management

Marketing & Design Unit



Hampshire
County Council

Most support functions have been merged and slimmed down:

- Performance
- Learning and Development
- IT
- Programme management
- Marketing (new County function)
- Finance and HR
- Secretariat and democratic support
- Local operationally based support maintained with expectations of enhanced flexibility

What the new department stands for:

The **cultural and community activities** that bring people together.



The public **buildings, venues and landscapes** where people choose to use our services.



The **technology** that brings people and public services together.



The **equipment and infrastructure** that keeps services running smoothly.

