

**Contacts c36,000 via hantsdirect  
plus c30,000 police cyp forms**

**Referrals c15,000 via hantsdirect +  
police CYPs**

**Initial assessments 8655**

**Core Assessments 5584**

**S.47 Assessments 2480**

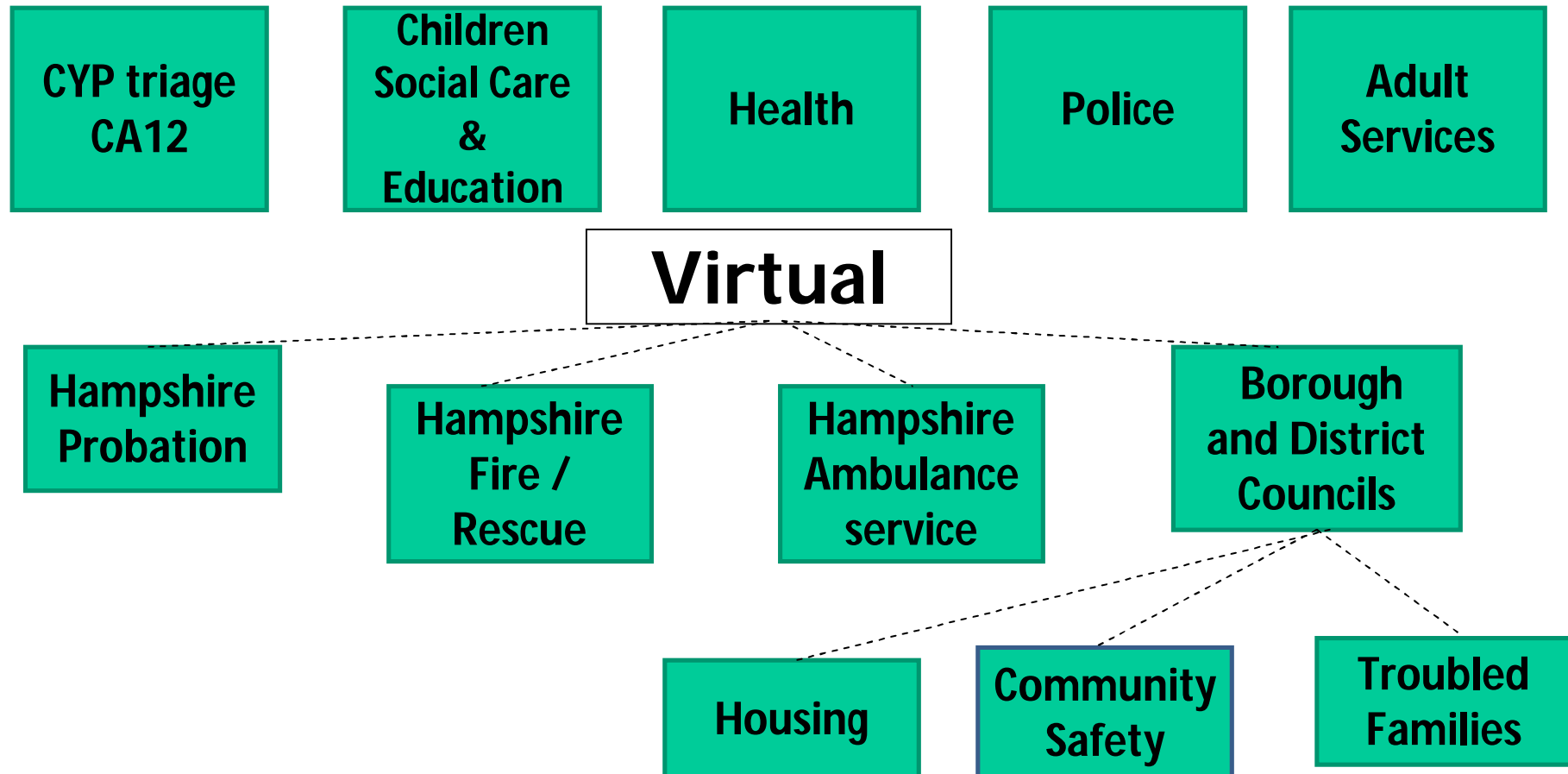
**New child protection plans 992**

**(Issue Proceedings c130)**

**New children in care c400**

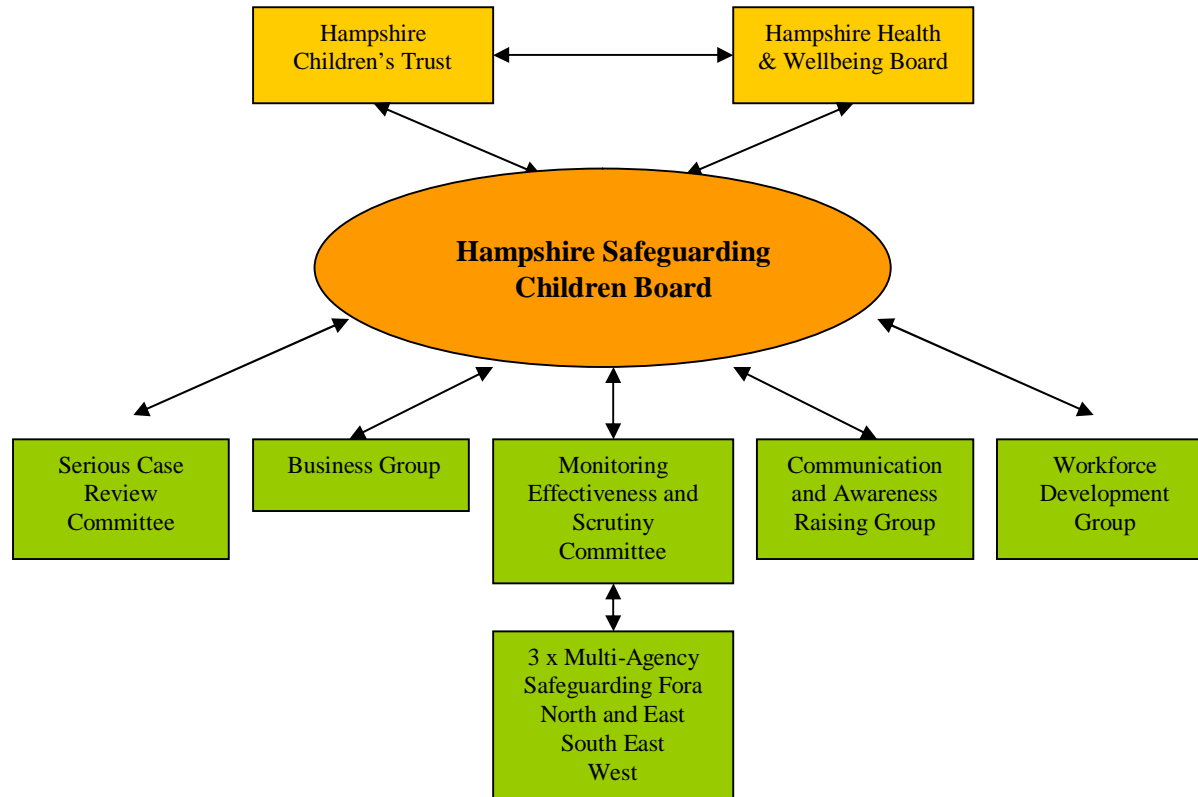


# MASH

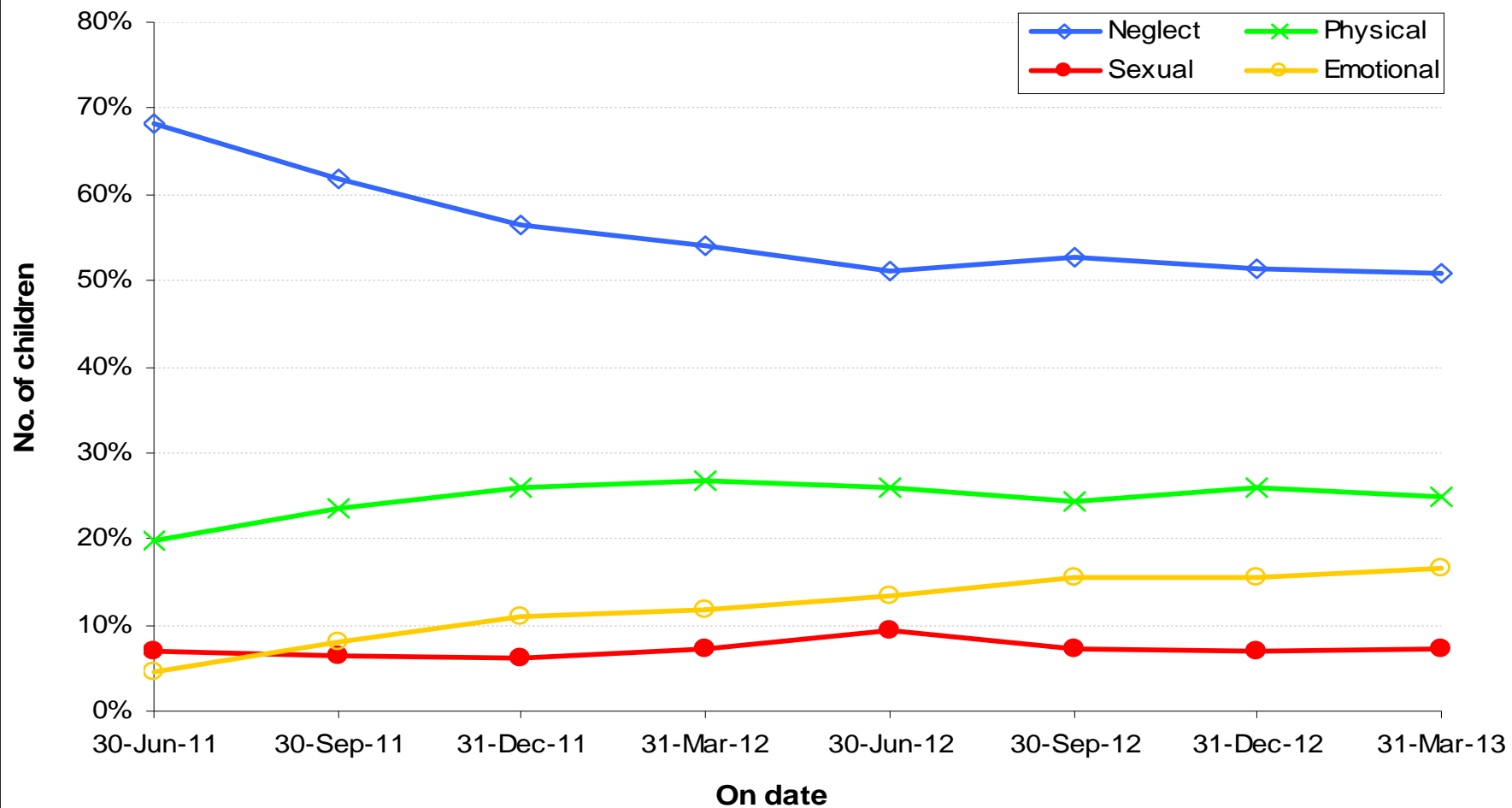


## Board structure

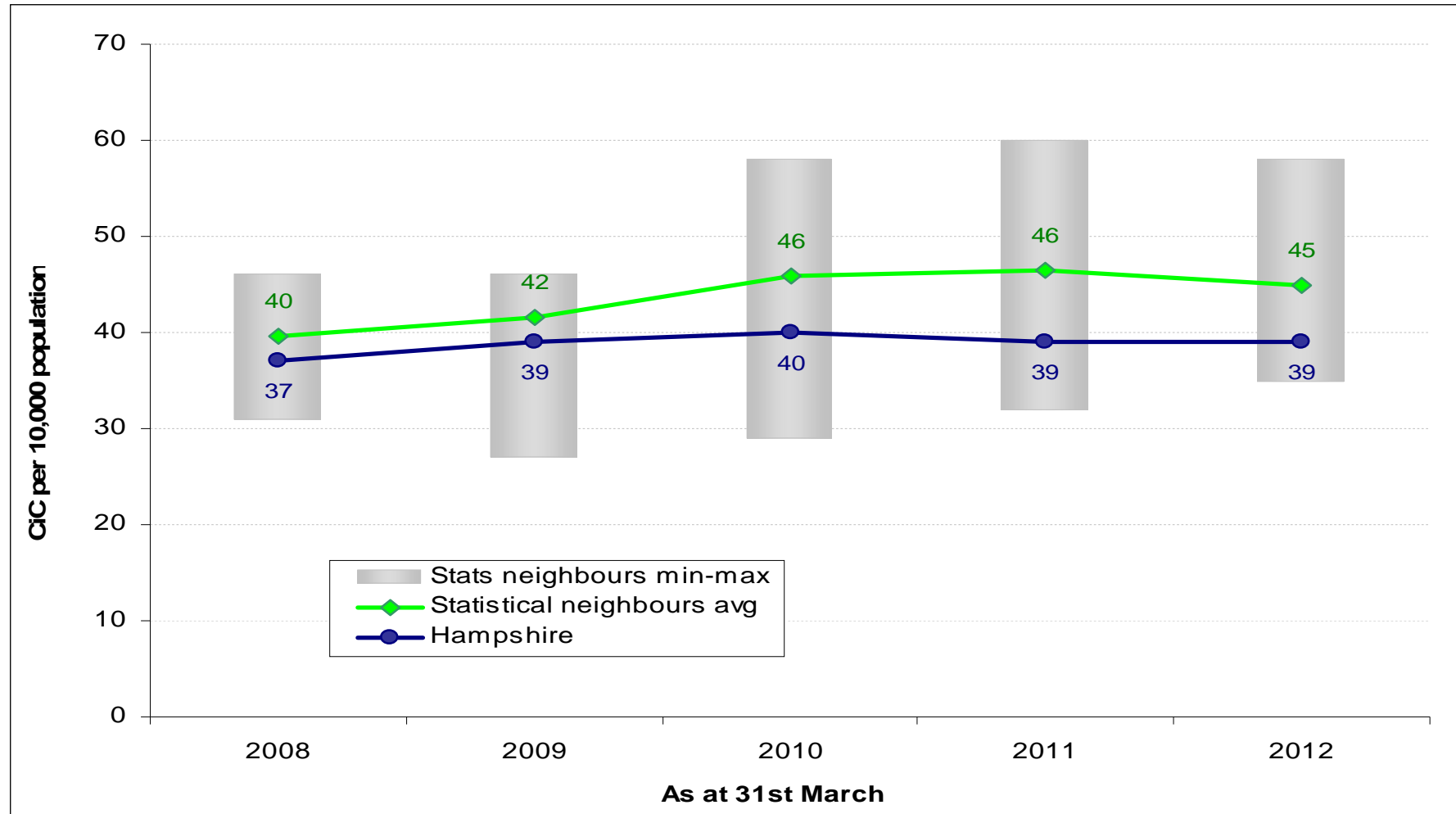
The main Board is supported by a range of sub-groups that enable its functioning. The structure of the board is illustrated below.



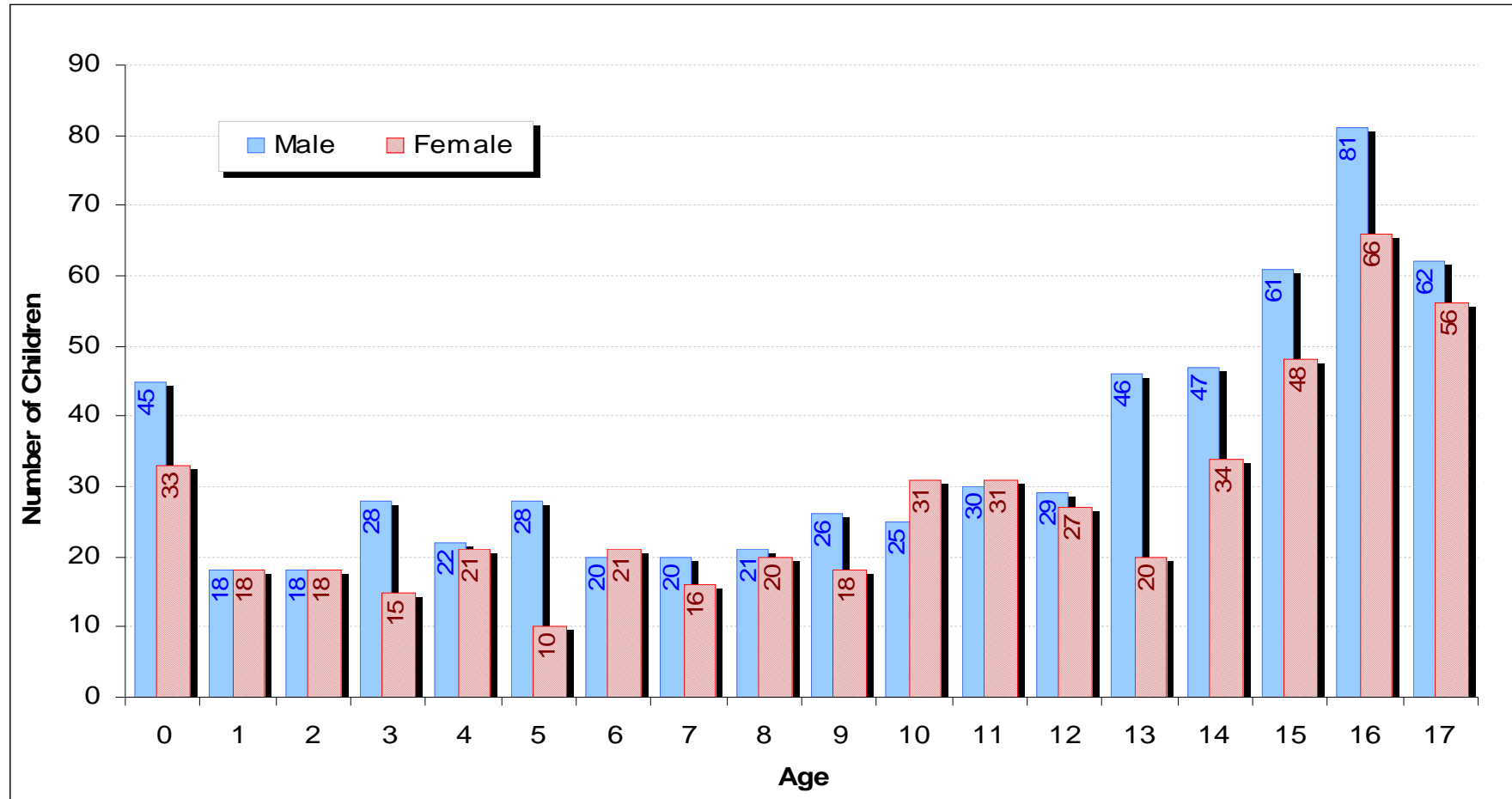
### Current CP Plans : by Category



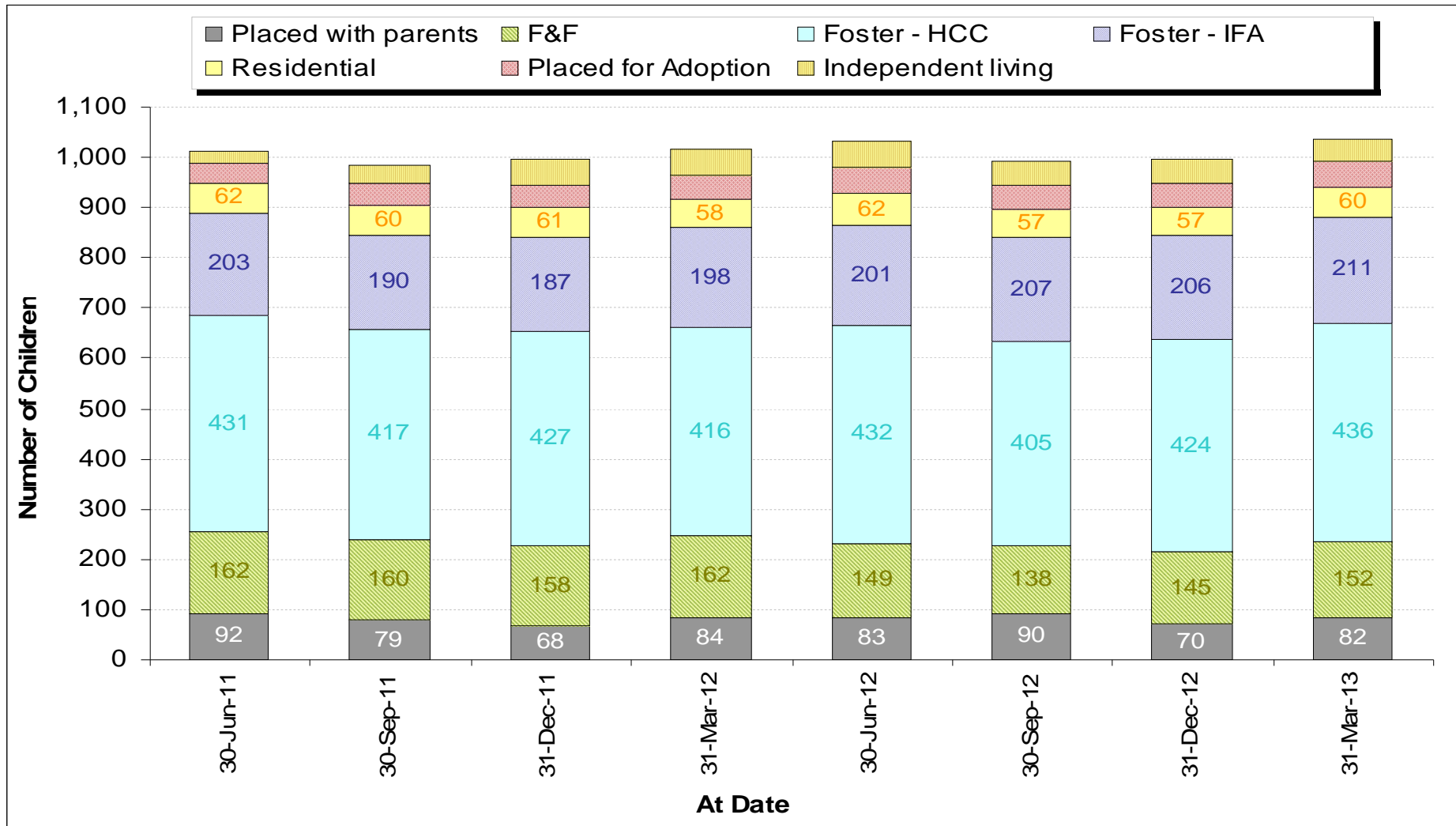
Children in care rate per 10,000 for Hampshire v statistical neighbours



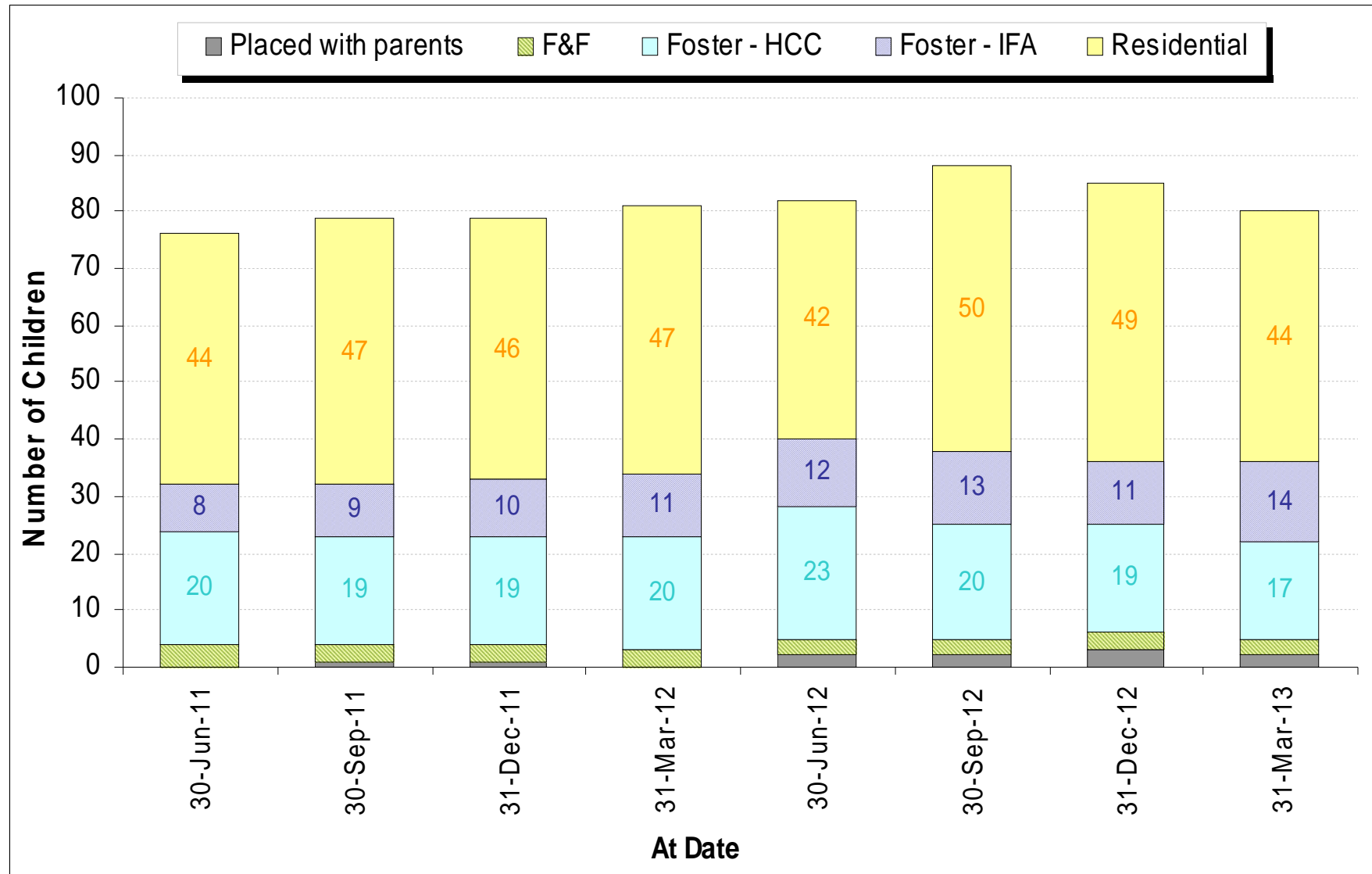
## Children in Care by age and gender



# Type of placement (non-disabled children)



# Type of placement disabled children



## Activity data

Table 1 contextual information	Mar 2008	Mar 2009	Mar 2010	Mar 2011	Mar 2012	Mar 2013
<b>Open social work cases (a)</b>	<b>4447</b>	<b>5857</b>	<b>5949</b>	<b>6572</b>	<b>6999</b>	<b>6822</b>
<b>Contacts in month with reason listed as child / young persons concern</b> (the figure in brackets denotes the number of children to whom the contacts relate) <b>(b)</b>	<b>1964</b> <b>(1582)</b>	<b>2809</b> <b>(2567)</b>	<b>2890</b> <b>(2616)</b>	<b>2912</b> <b>(2694)</b>	<b>2815 (2331)</b>	<b>3069 (2497)</b>
<b>Children with Child Protection Plan (c)</b>	<b>465</b>	<b>631</b>	<b>638</b>	<b>726</b>	<b>797</b>	<b>942</b>
<b>Children in care (full time) (d)</b>	<b>1016</b>	<b>1085</b>	<b>1104</b>	<b>1082</b>	<b>1103</b>	<b>1121</b>

Table 2 National Indicators	2008/09 <sup>1</sup>	2009/10 <sup>1</sup>	2010/11 <sup>1</sup>	2011/12 <sup>1</sup>	2012/13 <sup>2</sup>
<b>NI 59: Percentage of initial assessments for children's social care carried out within ten working days of referral. (Safeguarding definition adopted for 2010/11)</b>	n/a	n/a	66.0%	65.4%	67.7%
<b>NI 60: Percentage of core assessments for children's social care that were carried out within 35 working days of their commencement</b>	82.8%	80.2%	76.8%	72.3%	73.0%
<b>NI 64: Child protection plans lasting two years or more</b>	4.6%	7.1%	9.9%	5.6%	4.6%
<b>NI 65: Percentage of children becoming the subject of a child protection plan for a second or subsequent time (LAA target)</b>	16.8%	11.2%	11.3%	12.8%	13.0%
<b>NI 67: Percentage of child protection cases which were reviewed within required timescales</b>	99.6%	95.6%	97.9%	94.5%	92.3%

## What Else?

- Children with Special Educational Needs
- Educational Psychology
- Youth Support Services (targeted and commissioned)
- Short Breaks for disabled children
- Joint commissioning
- Early Help
- Youth Offending Service

