

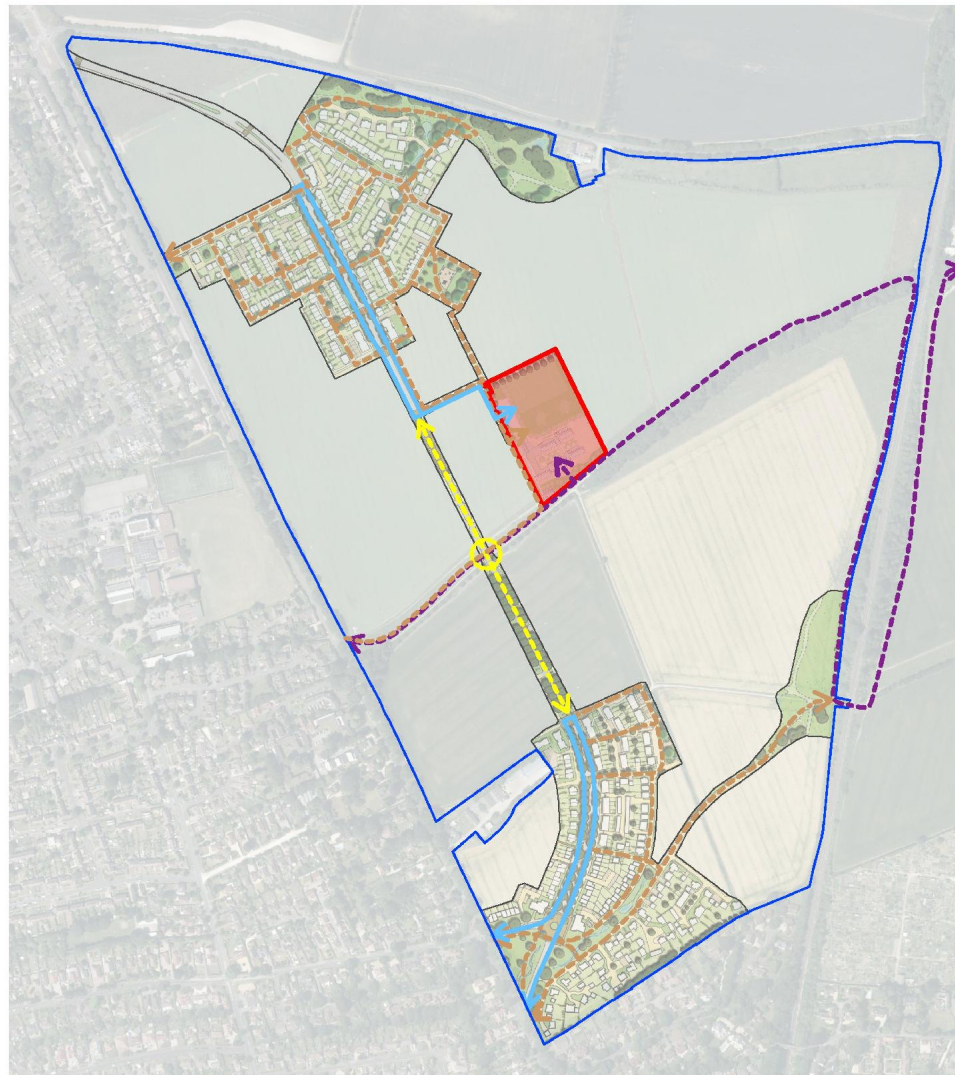
**Barton Farm Primary School**

**New 2FE Primary (420 place)**

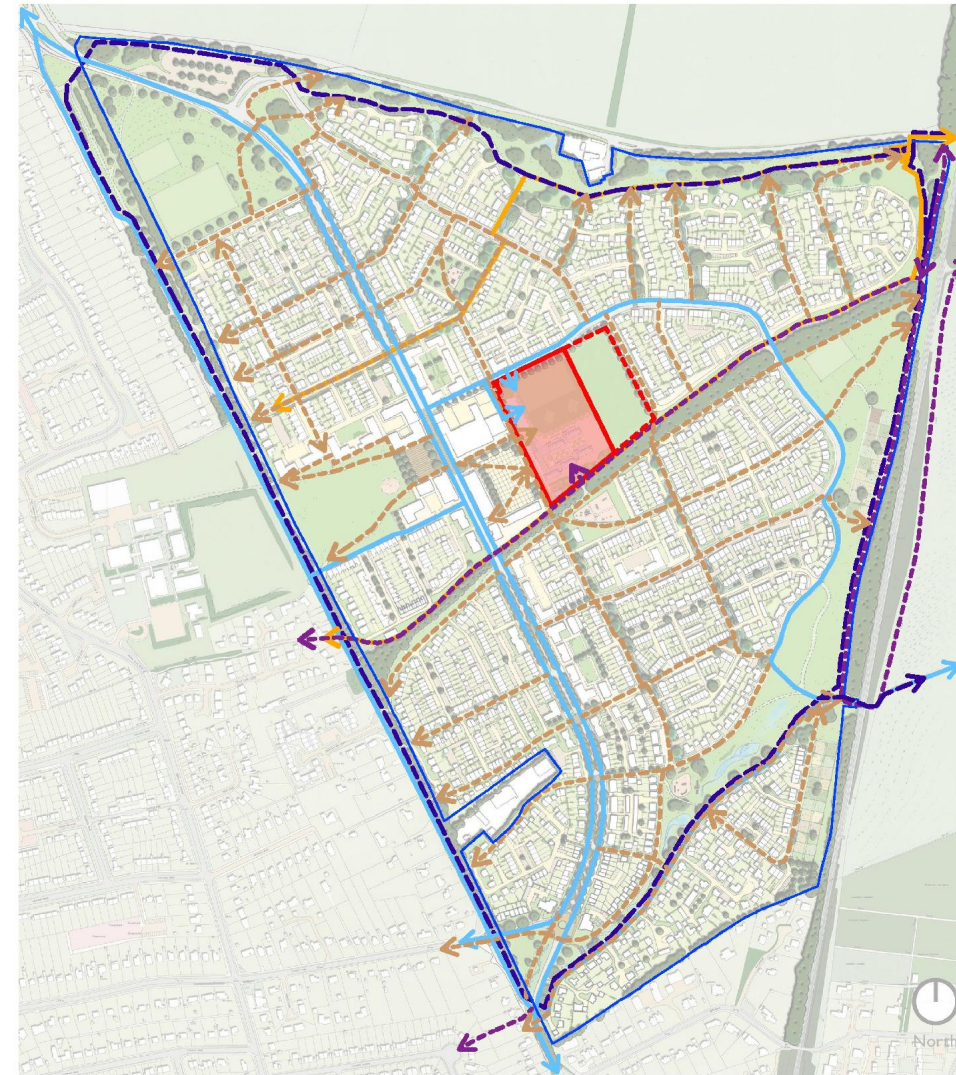
**Proposed School Site Access - Phasing Diagrams**

**Key:**

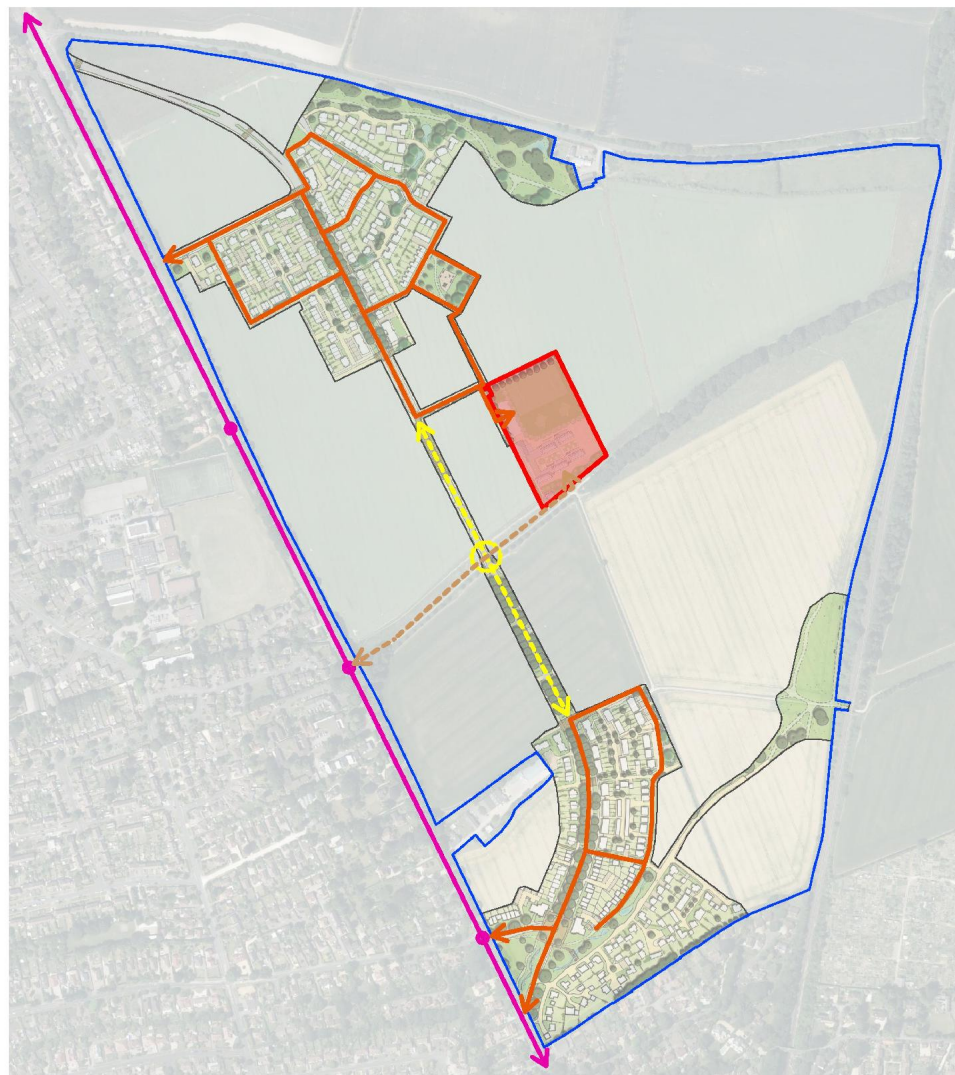
- 2FE School Boundary
  - 3FE School Boundary
  - Barton Farm MDA Site Boundary
  - Later Cala Phases
  - Proposed combined cycle and pedestrian route.
  - Proposed pedestrian circulation routes.
  - Existing Definitive rights of Way
  - Possible alternative access to school
  - Proposed alternative Headbourne Worthy / Henry Beaufort School route (Tarmac where proposed as a new route)
  - Proposed circular leisure / dog walking route
  - Proposed Vehicle Routes (Main roads around school shown only)
  - Proposed Bus Routes (including other vehicles)
  - Proposed Bus Stops (Indicative positions)
  - Proposed Pedestrian Access from bus stop and Andover road to School Site
  - Proposed Crossing Point
  - Temporary Road Construction for construction traffic only
- Note: Information taken from CALA Design Code document: 00555\_Design Code\_140318\_Part B



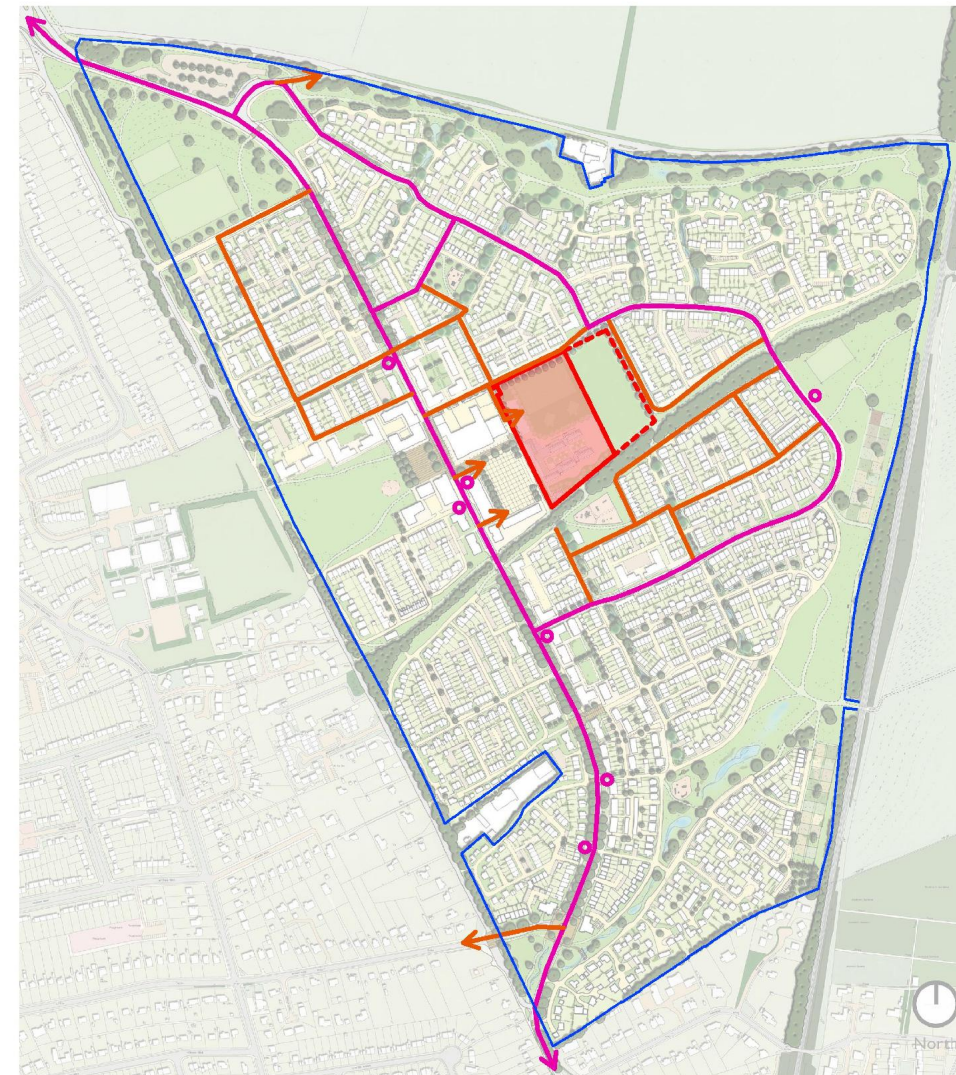
Pedestrian & Cycle Access to School Site - First Phase



Pedestrian & Cycle Access to School Site - Final Phase

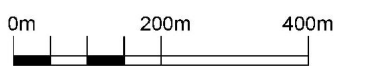


Vehicle Access to School Site - First Phase



Vehicle Access to School Site - Final Phase

**PLANNING ISSUE**



1:5500 @ A1  
P08864-A-005  
June 2015

