



Hampshire
County Council

Pete Marsh – Service Manager, Integrated Youth



The importance of not being NEET

- Lower life expectancy
- Higher family breakdown
- Less happy as NEET and at school before becoming NEET
- Unfulfilled ambition
- Poorly paid/routine jobs
- Involved in crime
- Increased drugs and substance misuse



Pre-NEET Indicators

- Persistent truants
- Permanently excluded
- Free School Meals
- Disability
- Poor attainment
- Parents in routine occupations
- Parents or young person have low aspirations
- Existing vulnerability, CiC, Traveller, Special Needs, BEM, young parents, involved with YOT, drugs and substance misuse, poor emotional health.



The NEET group

- Does not exist
- 75% Churn
- Oct 900 join – 730 leave
- They discover they are on the wrong college course
- April 370 join – 376 leave
- **Length of NEET stay critical**
- Nationally 4% Are NEET for 12 months +
- National average NEET stay 9 months
- Hampshire average NEET stay 7.4 months

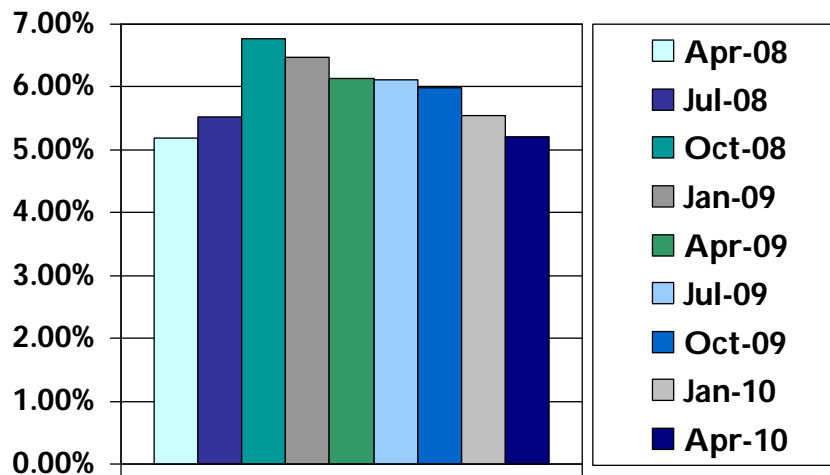
NEET Group 25% Non Churn

- 9% young parents
- 2% pregnant unable to obtain work
- 5% Unavailable CAMHS/Profound difficulties/medical
- 4% Unknown includes YOI
- 5% Hard core no work ethic alternate economy (approx 100 yp in the whole county)
- In times of full employment residual NEET likely to be between 2.5 and 3%

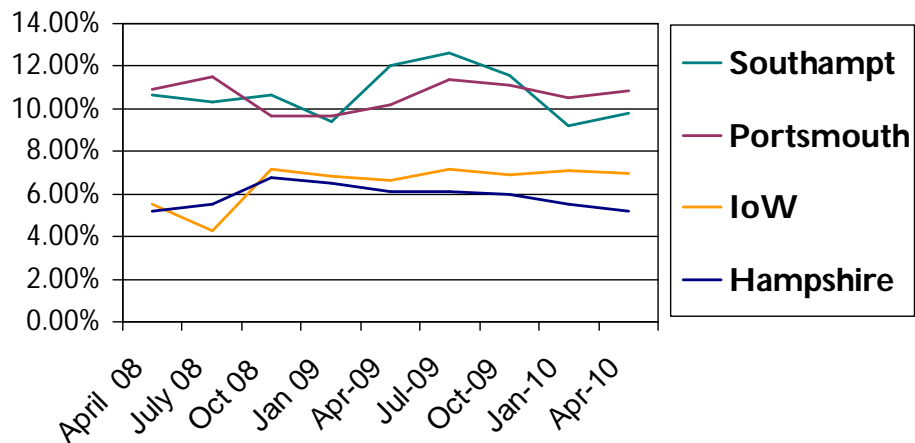
NEET Stats May 2010

Overall	5.2%	1608
Basingstoke	7.72%	254
East hants	5.69%	124
Eastleigh	4.72%	150
Fareham	3.62%	90
Gosport	7.34%	136
Hart	3.05%	54
Havant	8.61%	245
New Forest	5.14%	164
Rushmoor	9.40%	144
Test valley	5.79%	166
Winchester	3.36%	81

Hampshire NEETs since transfer



NEETs in partnership area



Response

- Apprenticeships
- January guarantee
- Key Stage 4 programme
- Summer Programme
- Keep on track
- On-going regular support/ Case loading
- January and other starts
- Roll on – Roll off learning programmes

Collective Responsibility

- Local Children's Partnerships
- Schools need to know and understand leavers destination to 19
- Early targeted interventions
- 14 -19 developments flexible and individualised learning, foundation
- Work with employers and EBPs to extend work experience
- HCC development of apprenticeships
- Future Jobs Fund opportunities

Participation/NEET Strategy

Four Key Themes:

- Careful tracking
- Personalised Guidance and Support
- Broad/Varied and Full Range of Stimulating Courses
- The Rights and Responsibilities of Young People