	<p>CHANDLERS FORD LEVEL CROSSING</p>	<p>Level Crossing Closure Programme</p>
		<p>OSBORNE – NETWORK RAIL</p>

Sutherlands Way level Crossing
Before



After



NR Ref:	146753
GOL Ref:	042087
Issue No:	1
Date:	DEC 2016

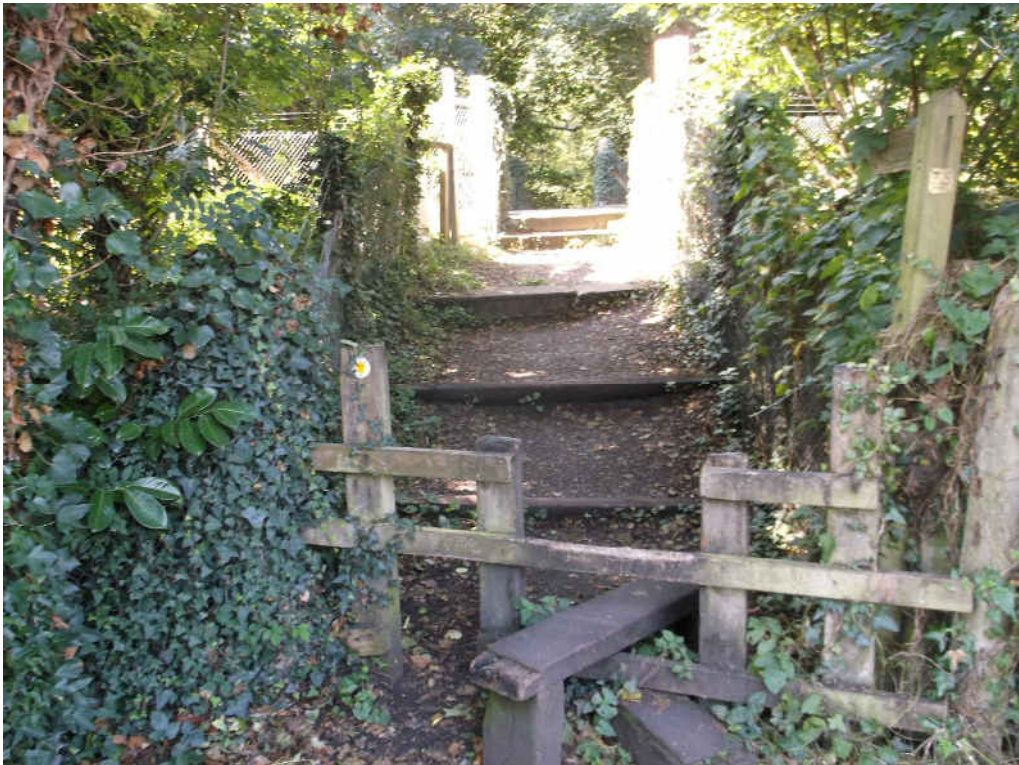


**CHANDLERS FORD
LEVEL CROSSING**

Level Crossing Closure
Programme

OSBORNE – NETWORK RAIL

Before



After



NR Ref:	146753
GOL Ref:	042087
Issue No:	1
Date:	DEC 2016

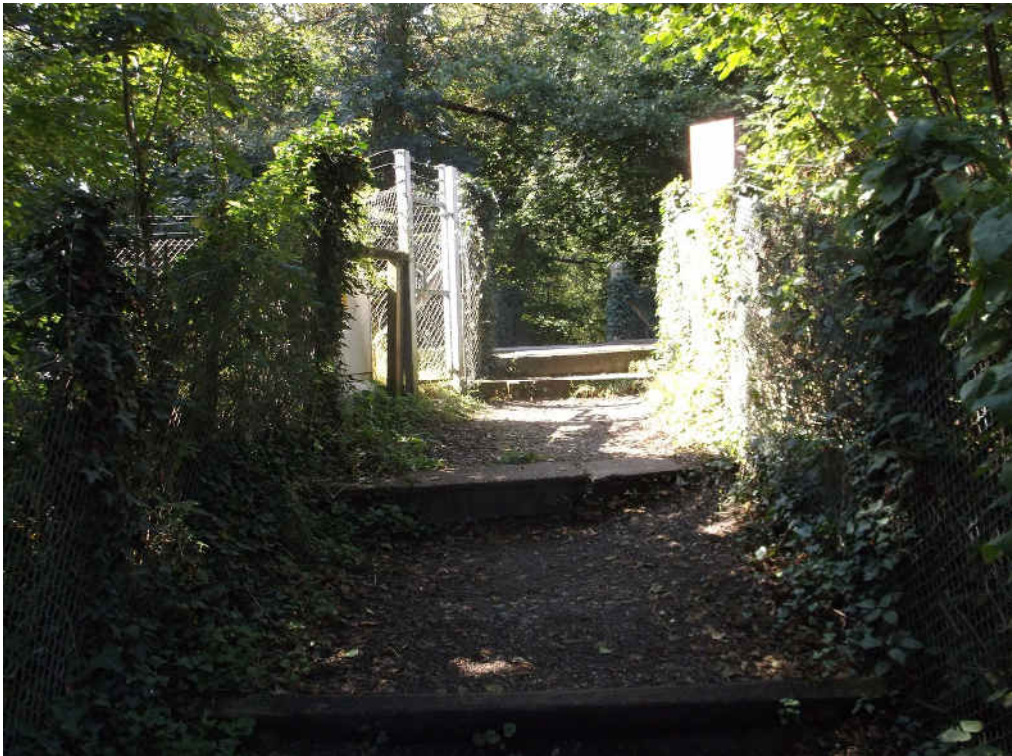


**CHANDLERS FORD
LEVEL CROSSING**

Level Crossing Closure
Programme

OSBORNE – NETWORK RAIL

Before



After



NR Ref:	146753
GOL Ref:	042087
Issue No:	1
Date:	DEC 2016



**CHANDLERS FORD
LEVEL CROSSING**

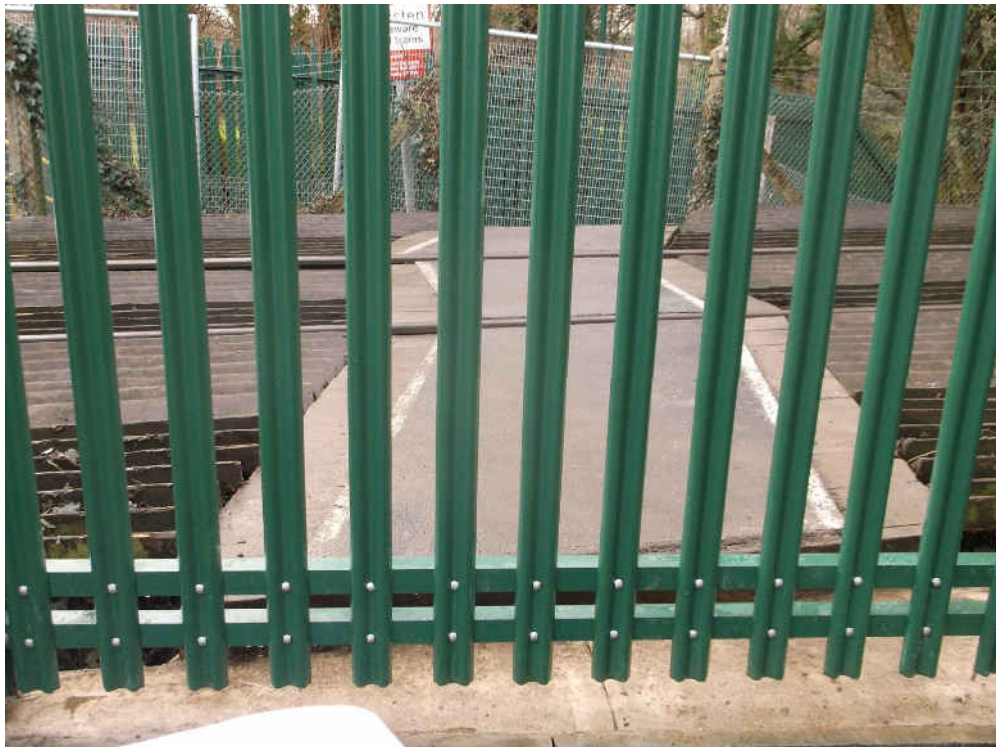
Level Crossing Closure
Programme

OSBORNE – NETWORK RAIL

Before



After



NR Ref:	146753
GOL Ref:	042087
Issue No:	1
Date:	DEC 2016

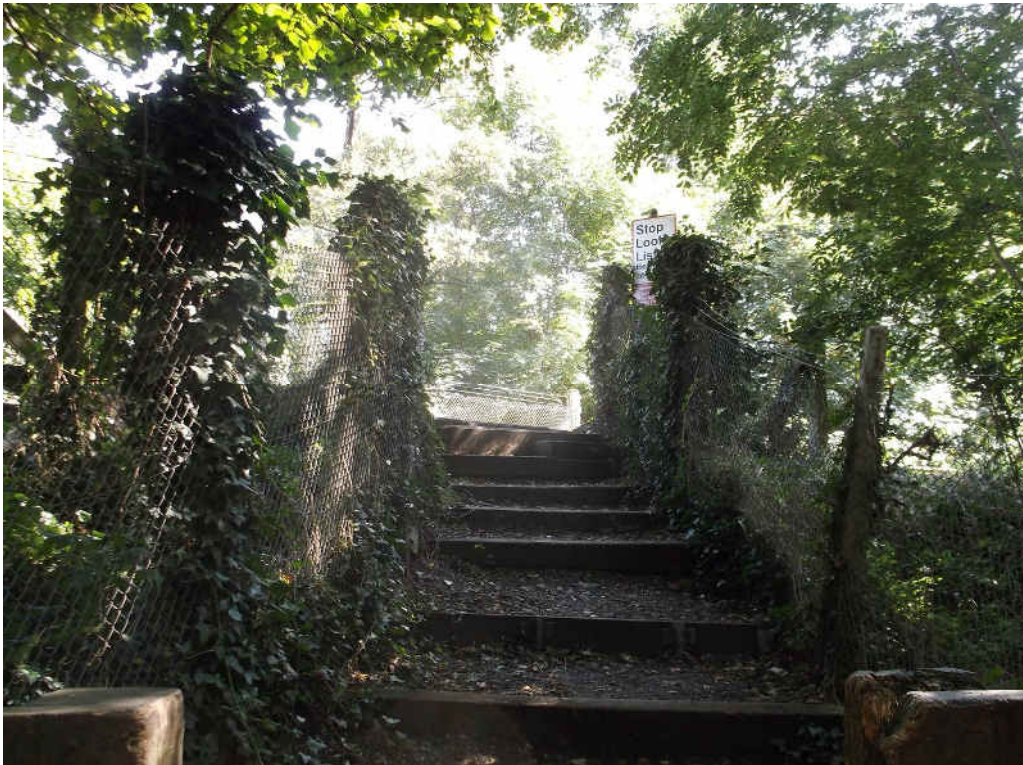


**CHANDLERS FORD
LEVEL CROSSING**

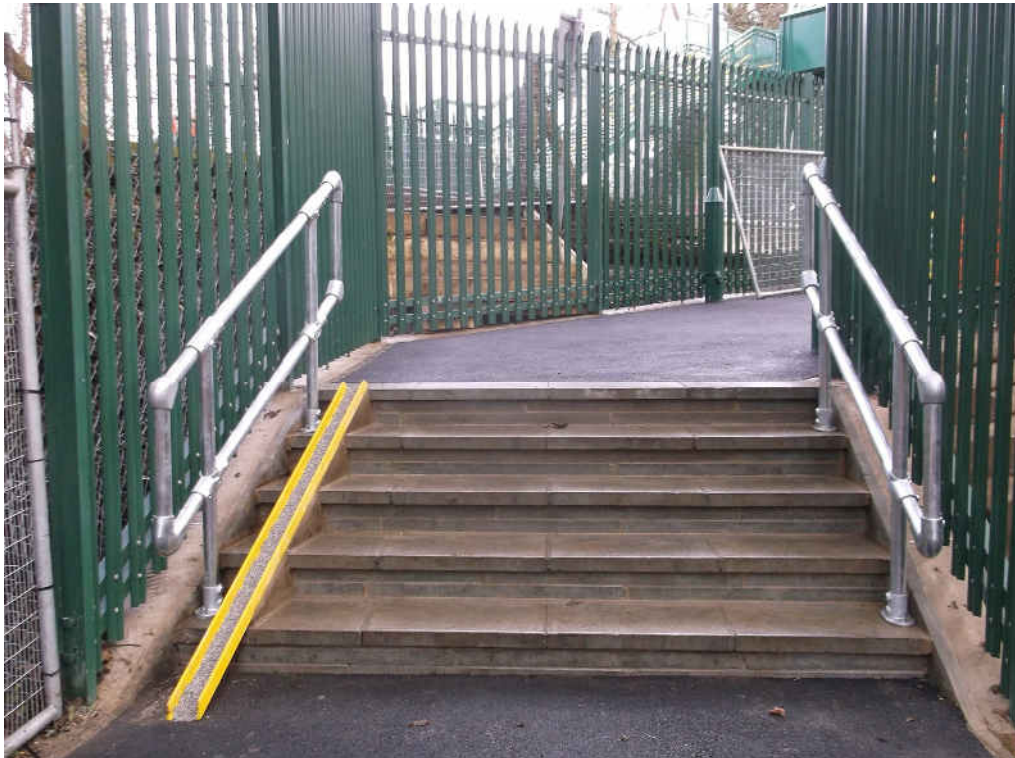
Level Crossing Closure
Programme

OSBORNE – NETWORK RAIL

Before



After



NR Ref:	146753
GOL Ref:	042087
Issue No:	1
Date:	DEC 2016

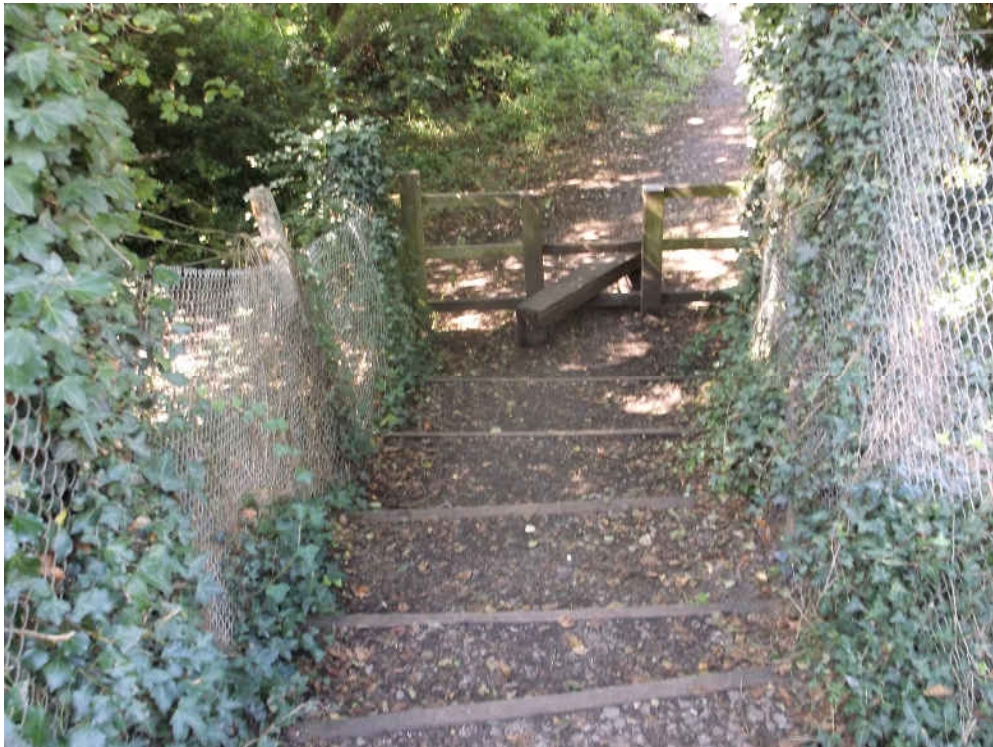


**CHANDLERS FORD
LEVEL CROSSING**

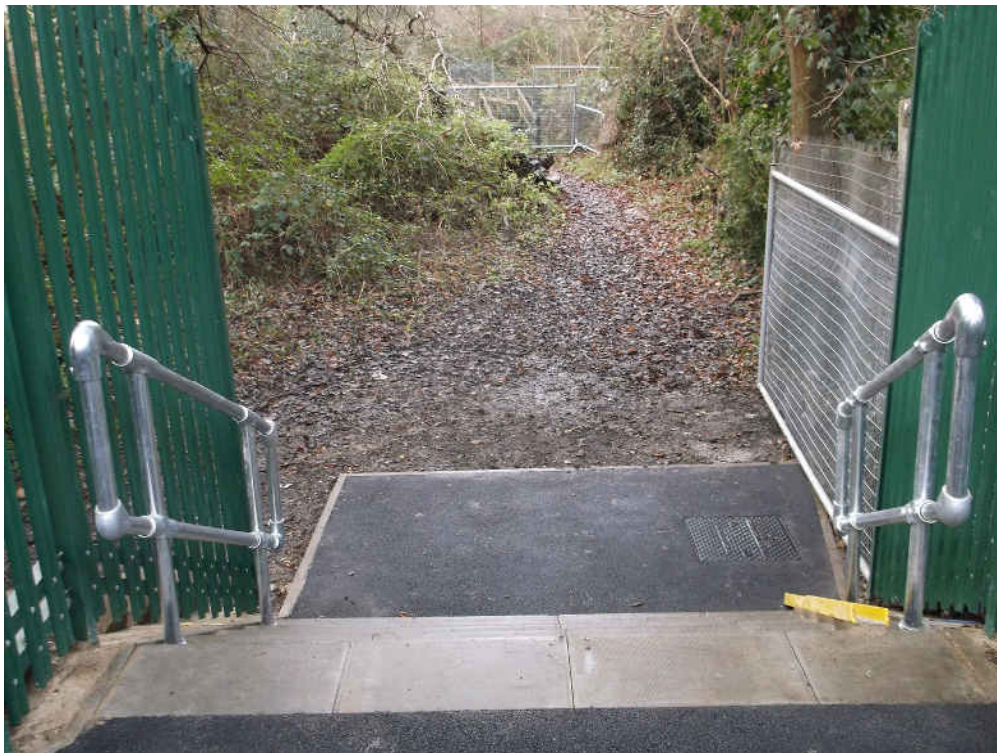
Level Crossing Closure
Programme

OSBORNE – NETWORK RAIL

Before



After



NR Ref:	146753
GOL Ref:	042087
Issue No:	1
Date:	DEC 2016



**CHANDLERS FORD
LEVEL CROSSING**

Level Crossing Closure
Programme

OSBORNE – NETWORK RAIL

Before



After



NR Ref:	146753
GOL Ref:	042087
Issue No:	1
Date:	DEC 2016