

Joint Strategic Needs Assessment 2015

Hampshire Health & Wellbeing Board

Contents

- Demography – how is our population changing?
- Starting Well – the health and life chances of our children
- Staying Well – the health of our adult population
- Ageing Well – the health of our older population

Key Issues for Hampshire

Population headlines

Children

(0-19 years) – 309,234 (23.1%) (23.7% England)

Older people

65 and over – 271,886 (20.3%) (17.6% England)

85 and over – 39,341 (2.9%) (2.4% England)

Demographic Growth by 2021

- Aged 0-19 years – increase by 17,533 (5.7%)
- Aged 65 and over – increase by 42,909 (15.8%)
- Aged 85 and over – increase by 14,413 (36.6%)

Life Expectancy and Healthy Life expectancy Gap

- Men – 15.5 years
- Women – 17.9 years

Lifestyle risks – activities contributing to poorer health outcomes

- Smoking
- Obesity
- Alcohol
- Inactivity
- Poor diet

Health and social inequalities

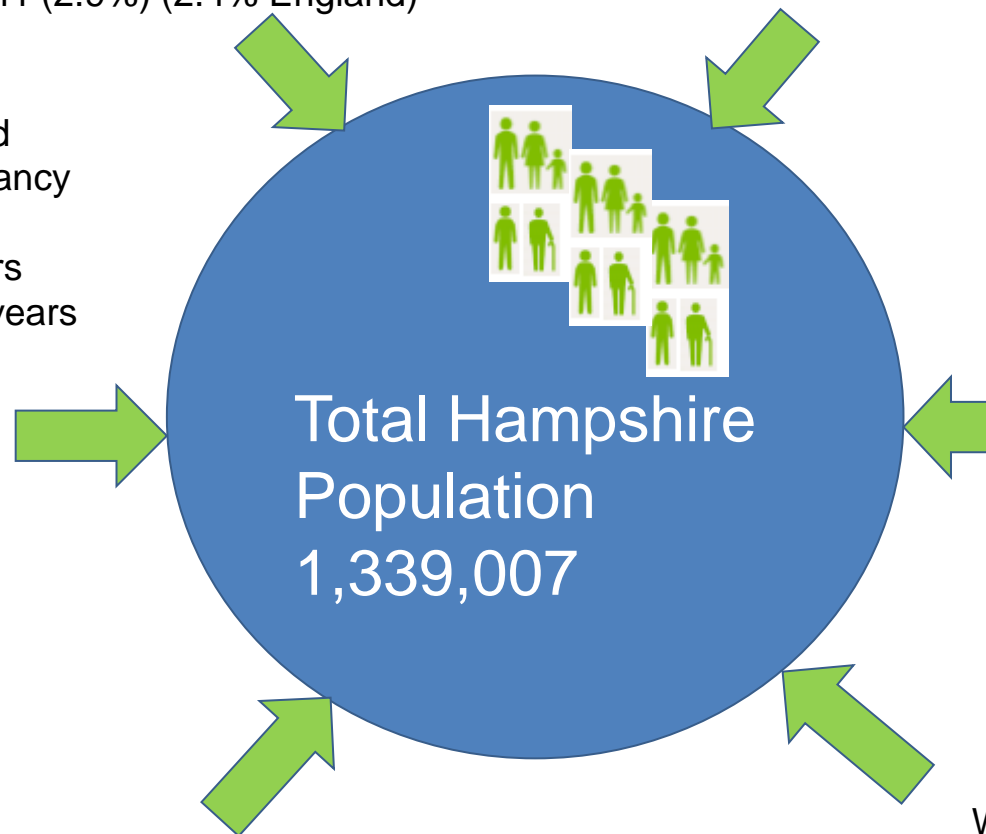
- Education
- Employment
- Isolation

Long term conditions /multi-morbidity:

- Diabetes
- Cardiovascular Disease
- Chronic Obstructive Pulmonary Disease
- Mental Health (including Dementia)
- Musculoskeletal (including Falls/Fractured hips)

Working age:

- Healthy carers,
- Workplace health
- Community Resilience



Demography

Hampshire

Population pyramid - Resident population estimate for 2014.

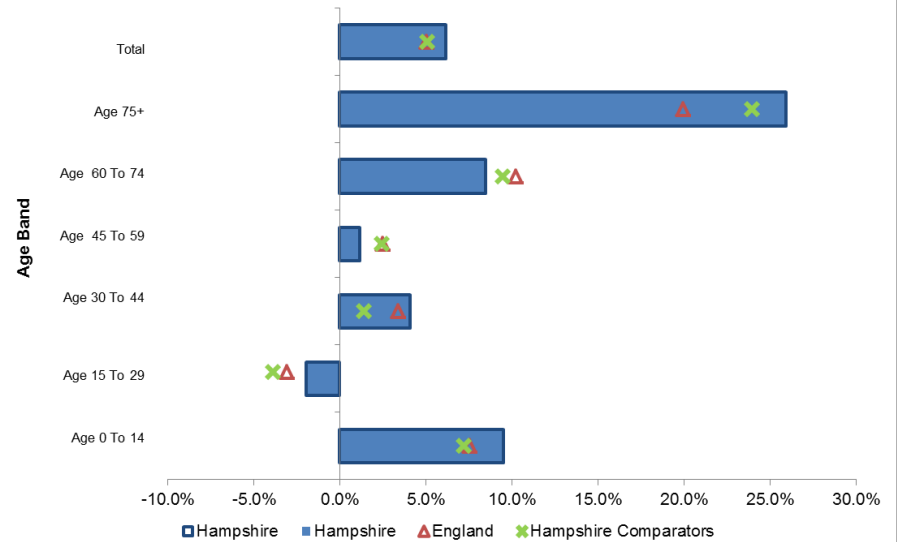
Source: HCC 2014 based small area population forecasts for districts. Comparators ONS 2012-based forecast.



Hampshire

Forecast change in resident population between 2014 and 2021.

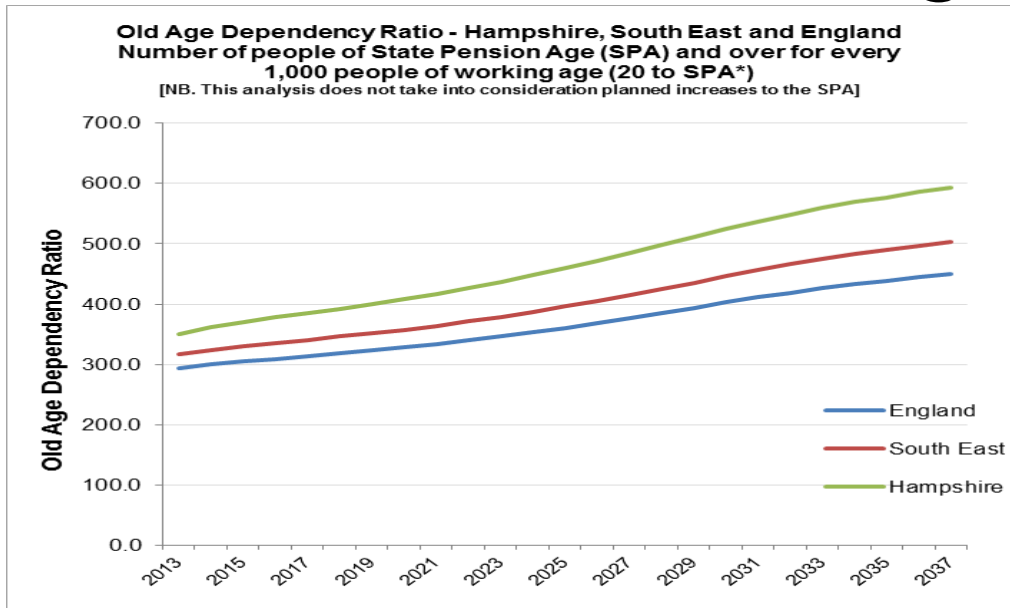
Source: HCC 2014 based small area population forecasts for districts. Comparator ONS 2012-based forecast.



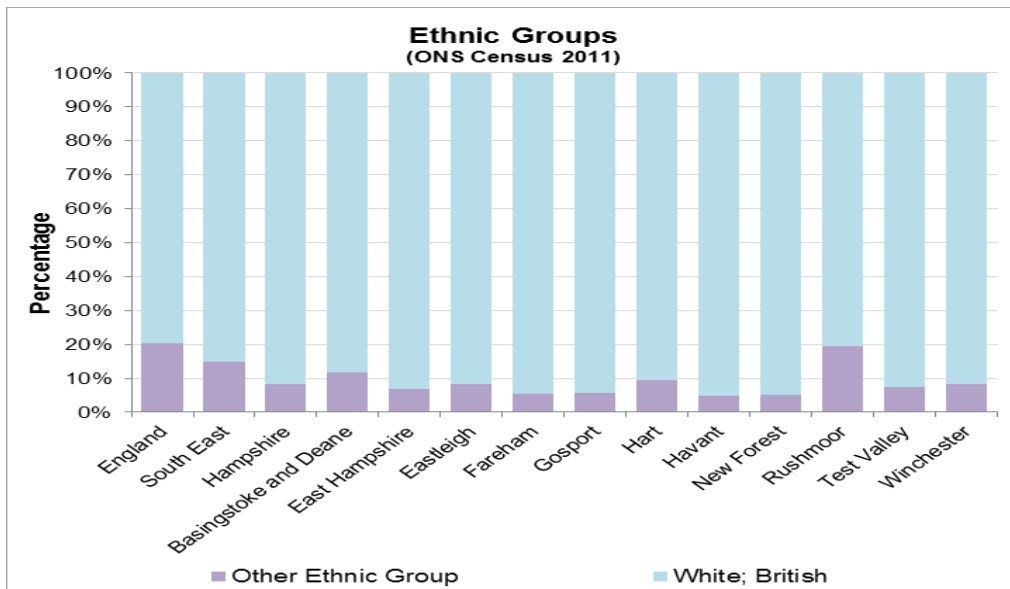
Population Change 2014 to 2021

Age band	Hampshire				Hampshire Comparators	England
	2014	2021	Difference	% Change	% Change	% Change
Age 0 To 19	309,234	326,767	17,533	5.7%	4.3%	4.6%
Age 20 To 39	306,122	324,007	17,885	5.8%	1.8%	2.5%
Age 40 To 64	451,765	456,270	4,505	1.0%	1.7%	2.5%
Age 65+	271,886	314,795	42,909	15.8%	15.7%	14.1%
Age 85+	39,341	53,754	14,413	36.6%	28.8%	26.5%
Total	1,339,007	1,421,839	82,832	6.2%	5.1%	5.0%

Demography



- The OADR provides an idea of the relationship between the working age population compared to those of pensionable age. A higher OADR value indicates a fewer people of working age
- Ratio of people of state pension age is increasing compared to working age population
- By 2030 for every 2 people of working age there will be 1 person of pensionable age in Hampshire



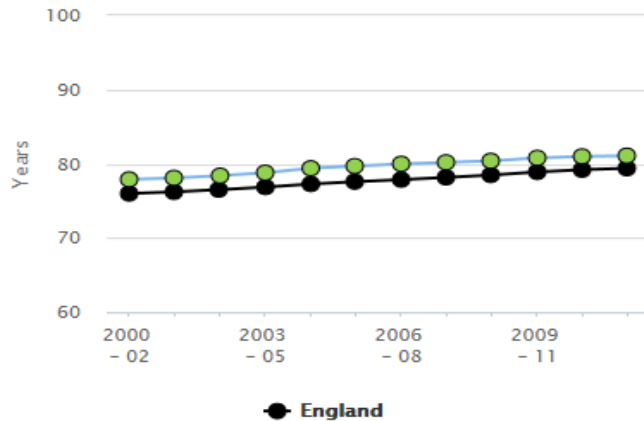
- Variation in Ethnic Groups and diversity across the County – necessitating changing needs

Demography

0.1ii - Life Expectancy at birth (Male)

Hampshire

Life expectancy - Years



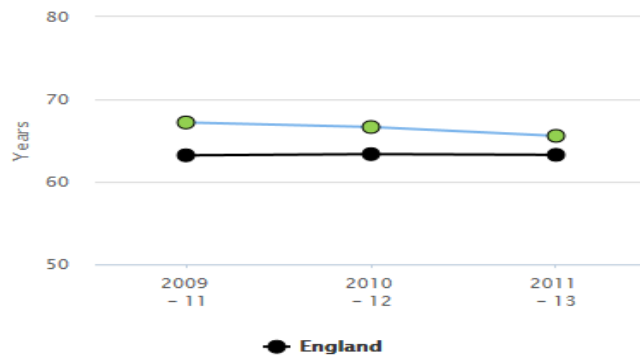
Period	Count	Value	Lower CI	Upper CI	South East	England
2000 - 02	-	77.9	77.7	78.1	77.2	76.0
2001 - 03	-	78.1	77.9	78.3	77.4	76.2
2002 - 04	-	78.4	78.2	78.6	77.7	76.5
2003 - 05	-	78.8	78.6	79.0	78.1	76.9
2004 - 06	-	79.4	79.2	79.6	78.5	77.3
2005 - 07	-	79.7	79.5	79.8	78.9	77.6
2006 - 08	-	80.0	79.8	80.1	79.1	77.9
2007 - 09	-	80.2	80.0	80.4	79.4	78.2
2008 - 10	-	80.4	80.3	80.6	79.7	78.5
2009 - 11	-	80.8	80.6	81.0	80.0	78.9
2010 - 12	-	81.0	80.8	81.2	80.3	79.2
2011 - 13	-	81.1	80.9	81.3	80.4	79.4

Source: Figures calculated by Office for National Statistics using ONS mortality data and mid-year population estimates.

0.1i - Healthy life expectancy at birth (Male)

Hampshire

Life expectancy - Years



Period	Count	Value	Lower CI	Upper CI	South East	England
2009 - 11	-	67.2	66.1	68.3	65.7	63.2
2010 - 12	-	66.6	65.5	67.8	65.8	63.4
2011 - 13	-	65.6	64.3	66.8	65.6	63.3

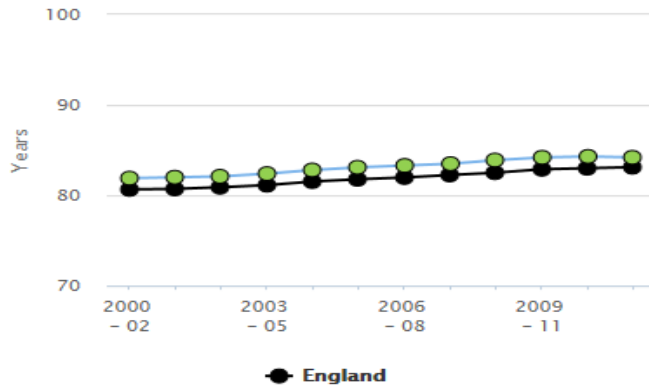
Source: <http://www.ons.gov.uk/ons/re/disability-and-health-measurement/healthy-life-expectancy-at-birth-for-upper-tier-local-authorities-england/2011-13/stb-healthy-life-expectancy.html>

- Life expectancy is increasing; healthy life expectancy is reducing

Demography

0.1ii - Life Expectancy at birth (Female) Hampshire

Life expectancy - Years

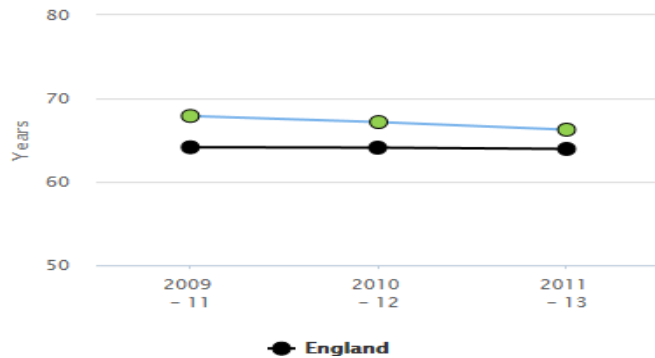


Period	Count	Value	Lower CI	Upper CI	South East	England
2000 - 02	-	81.9	81.7	82.1	81.5	80.7
2001 - 03	-	82.0	81.8	82.2	81.6	80.7
2002 - 04	-	82.1	82.0	82.3	81.8	80.9
2003 - 05	-	82.4	82.3	82.6	82.0	81.1
2004 - 06	-	82.8	82.7	83.0	82.4	81.5
2005 - 07	-	83.1	82.9	83.3	82.6	81.8
2006 - 08	-	83.3	83.1	83.4	82.9	82.0
2007 - 09	-	83.5	83.4	83.7	83.2	82.3
2008 - 10	-	83.9	83.7	84.0	83.5	82.5
2009 - 11	-	84.2	84.0	84.3	83.8	82.9
2010 - 12	-	84.3	84.1	84.4	83.8	83.0
2011 - 13	-	84.2	84.1	84.4	83.9	83.1

Source: Figures calculated by Office for National Statistics using ONS mortality data and mid-year population estimates.

0.1i - Healthy life expectancy at birth (Female) Hampshire

Life expectancy - Years

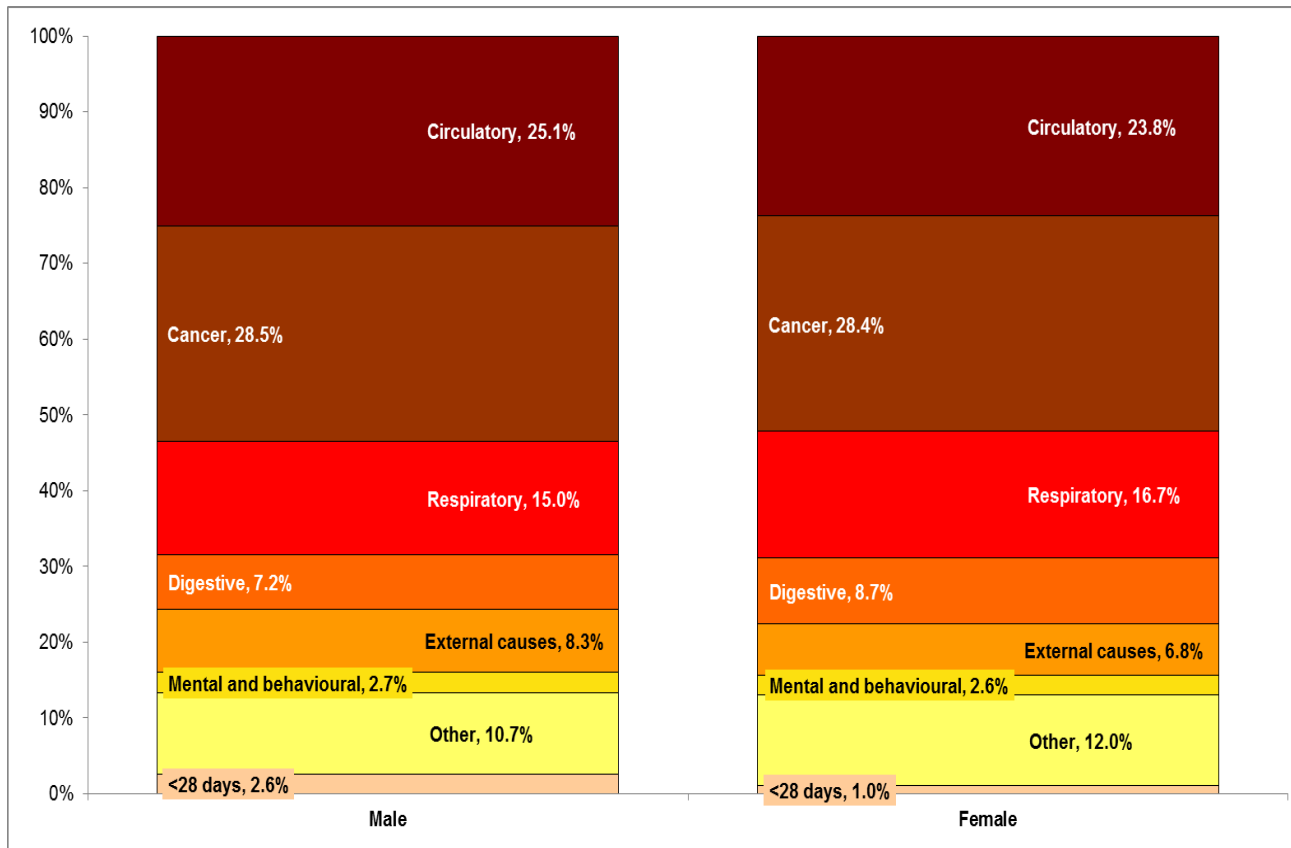


Period	Count	Value	Lower CI	Upper CI	South East	England
2009 - 11	-	67.9	66.8	69.1	67.0	64.2
2010 - 12	-	67.2	65.9	68.4	67.1	64.1
2011 - 13	-	66.3	64.9	67.6	66.7	63.9

Source: <http://www.ons.gov.uk/ons/re/d/disability-and-health-measurement/healthy-life-expectancy-at-birth-for-upper-tier-local-authorities--england/2011-13/stb-healthy-life-expectancy.html>

- Life expectancy for women; the increase is much slower, beginning to plateau
- Healthy life expectancy is decreasing

Inequality in Hampshire

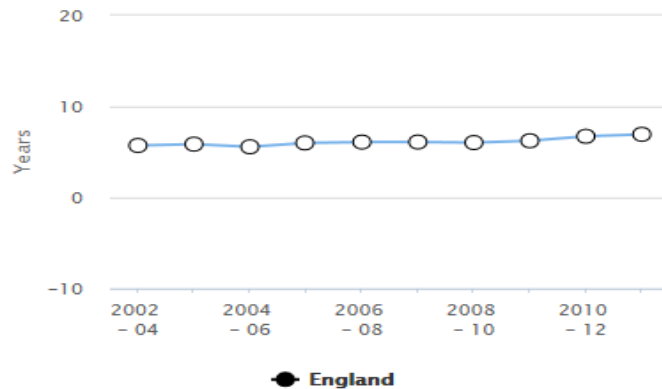


Scarf Chart showing the breakdown in life expectancy gap between most deprived and least deprived quintiles across Hampshire, by broad cause of death 2010-12

Gap in life expectancy due primarily to Circulatory Disease, Cancer and Respiratory disease

Inequality in Hampshire

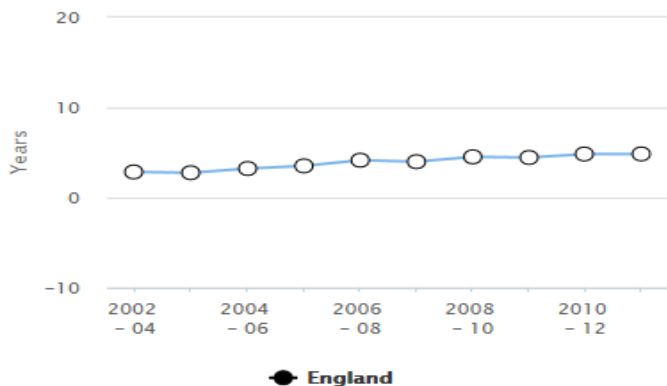
0.2iii - Slope index of inequality in life expectancy at birth within English local authorities, based on local deprivation deciles within each area (Male) Hampshire



Period	Count	Value	Lower CI	Upper CI	South East	England
2002 - 04	-	5.7	4.2	7.3	-	-
2003 - 05	-	5.9	3.9	7.8	-	-
2004 - 06	-	5.6	3.5	7.6	-	-
2005 - 07	-	6.0	3.8	8.2	-	-
2006 - 08	-	6.1	3.9	8.2	-	-
2007 - 09	-	6.1	3.9	8.3	-	-
2008 - 10	-	6.0	3.8	8.3	-	-
2009 - 11	-	6.2	4.1	8.3	-	-
2010 - 12	-	6.7	4.4	9.0	-	-
2011 - 13	-	6.9	4.8	9.0	-	-

Source: Figures calculated by Public Health England using mortality data and mid-year population estimates from the Office for National Statistics and Index of Multiple Deprivation 2010 (IMD 2010) scores from the Department for Communities and Local Government.

0.2iii - Slope index of inequality in life expectancy at birth within English local authorities, based on local deprivation deciles within each area (Female) Hampshire



Period	Count	Value	Lower CI	Upper CI	South East	England
2002 - 04	-	2.8	1.5	4.2	-	-
2003 - 05	-	2.8	1.6	3.9	-	-
2004 - 06	-	3.2	1.5	4.9	-	-
2005 - 07	-	3.5	1.6	5.4	-	-
2006 - 08	-	4.1	2.2	6.1	-	-
2007 - 09	-	4.0	2.2	5.8	-	-
2008 - 10	-	4.5	2.8	6.3	-	-
2009 - 11	-	4.4	2.3	6.6	-	-
2010 - 12	-	4.8	2.8	6.9	-	-
2011 - 13	-	4.8	2.4	7.3	-	-

Source: Figures calculated by Public Health England using mortality data and mid-year population estimates from the Office for National Statistics and Index of Multiple Deprivation 2010 (IMD 2010) scores from the Department for Communities and Local Government.

- Life expectancy gap for men and women between most and least deprived is increasing

Starting Well

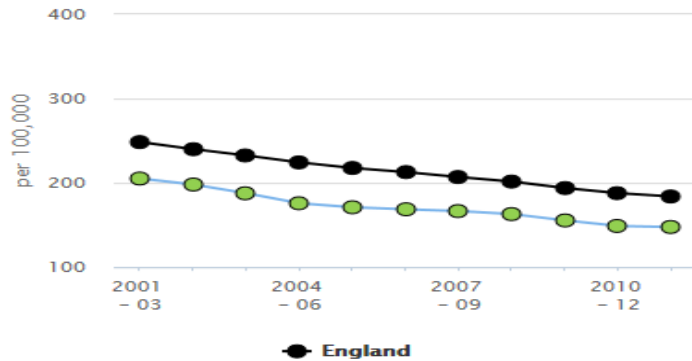
- Key issues for the Health of Children and Young People
 - Working with families on minimising excess weight gain to achieving a healthy weight (improving healthy eating and physical activity)
 - Develop and target social and emotional interventions to support emotional wellbeing of children and young people
 - Understanding needs of vulnerable children (Children with Disabilities and SEN)
 - Supporting vulnerable children improve educational attainment and health
 - Supporting long term unemployed young people into education, training and employment
 - Maximising the impact of Public Health 0-5 services to improve healthy eating, reducing accidents, identifying families at risk of poorer health and emotional wellbeing

Staying Well: Morbidity

4.03 - Mortality rate from causes considered preventable (Persons)

Hampshire

Directly standardised rate - per 100,000



Period	Count	Value	Lower CI	Upper CI	South East	England
2001 - 03	6,705	205.1	200.2	210.1	216.5	248.4
2002 - 04	6,563	198.0	193.2	202.9	209.4	240.0
2003 - 05	6,310	187.6	183.0	192.3	203.2	232.5
2004 - 06	5,992	175.7	171.3	180.3	197.1	224.3
2005 - 07	5,936	171.0	166.7	175.4	191.2	217.7
2006 - 08	5,976	168.6	164.3	173.0	185.6	212.8
2007 - 09	6,036	166.5	162.3	170.7	180.2	206.9
2008 - 10	6,028	162.9	158.8	167.1	176.2	201.5
2009 - 11	5,858	155.4	151.4	159.4	170.3	193.8
2010 - 12	5,721	148.8	145.0	152.7	164.5	187.8
2011 - 13	5,784	147.6	143.8	151.5	161.4	183.9

Source: Public Health England (based on ONS source data)

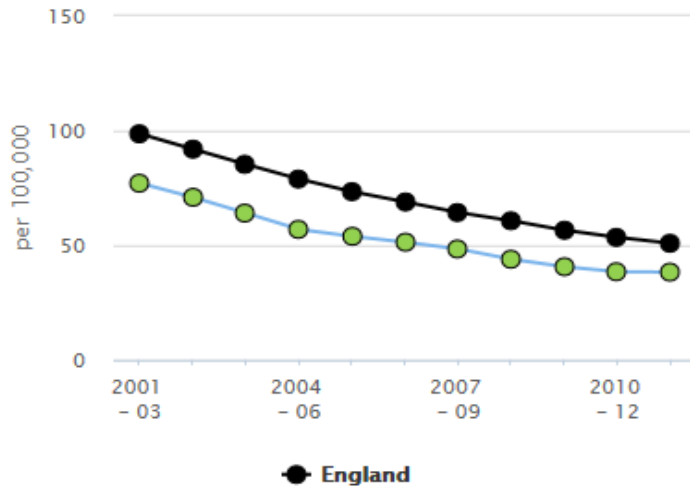
CCG	CHD Recorded Prevalence	CHD Estimated Prevalence	Diabetes Recorded Prevalence	Diabetes Estimated Prevalence	Hyper-tension Recorded Prevalence	Hyper-tension Estimated Prevalence	Hampshire District
North East Hampshire and Farnham	2.6% (1 in 38)	3.5% (1 in 29)	5.2% (1 in 19)	6.3% (1 in 16)	12.8% (1 in 8)	22.7% (1 in 5)	Rushmoor Hart (part) Waverley (part)
North Hampshire	2.6% (1 in 38)	3.6% (1 in 28)	5.7% (1 in 18)	6.2% (1 in 16)	12.3% (1 in 8)	22.9% (1 in 5)	Basingstoke and Deane East Hampshire (part) Hart (part)
West Hampshire	3.4% (1 in 29)	4.6% (1 in 22)	5.3% (1 in 19)	7.0% (1 in 14)	14.5% (1 in 7)	26.2% (1 in 4)	Test Valley New Forest Winchester (part) Eastleigh East Hampshire (part)
South Eastern Hampshire	3.8% (1 in 26)	5.3% (1 in 19)	6.2% (1 in 16)	7.5% (1 in 13)	15.4% (1 in 6)	27.2% (1 in 4)	Havant East Hampshire (part) Winchester (part)
Fareham & Gosport	3.6% (1 in 28)	4.5% (1 in 22)	6.2% (1 in 16)	6.8% (1 in 15)	15.5% (1 in 6)	26.0% (1 in 4)	Fareham Gosport
England	3.3% (1 in 30)	4.7% (1 in 21)	6.2% (1 in 16)	7.3% (1 in 14)	13.7% (1 in 7)	24.7% (1 in 4)	

Staying Well: Mortality (CVD)

4.04ii - Under 75 mortality rate from cardiovascular diseases considered preventable (Persons)

Hampshire

Directly standardised rate - per 100,000



Period	Count	Value	Lower CI	Upper CI	South East	England
2001 - 03	2,252	77.1	73.9	80.3	82.4	98.6
2002 - 04	2,108	70.9	67.9	74.0	76.8	91.9
2003 - 05	1,934	64.0	61.2	67.0	71.6	85.3
2004 - 06	1,736	56.9	54.3	59.7	66.0	78.9
2005 - 07	1,671	53.9	51.4	56.6	61.4	73.4
2006 - 08	1,625	51.4	48.9	53.9	57.1	68.9
2007 - 09	1,571	48.4	46.0	50.9	53.3	64.3
2008 - 10	1,457	43.9	41.7	46.2	50.1	60.7
2009 - 11	1,376	40.6	38.5	42.9	46.9	56.6
2010 - 12	1,327	38.5	36.4	40.6	44.5	53.5
2011 - 13	1,350	38.3	36.3	40.4	42.5	50.9

Source: Public Health England (based on ONS source data)

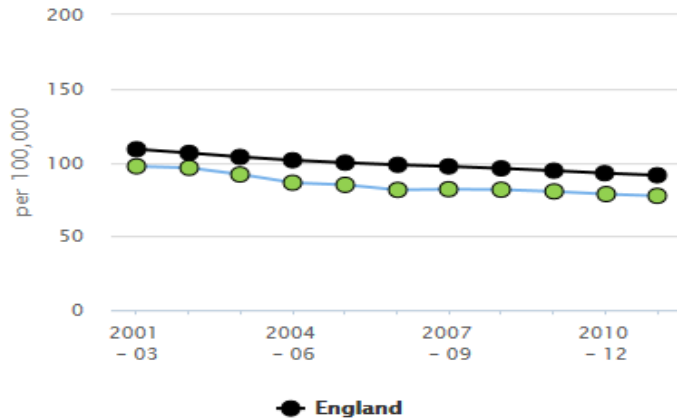
Rate of decline in preventable mortality for CVD has slowed – starting to plateau

Staying Well: Mortality (Cancer)

4.05ii - Under 75 mortality rate from cancer considered preventable (Male)

Hampshire

Directly standardised rate - per 100,000



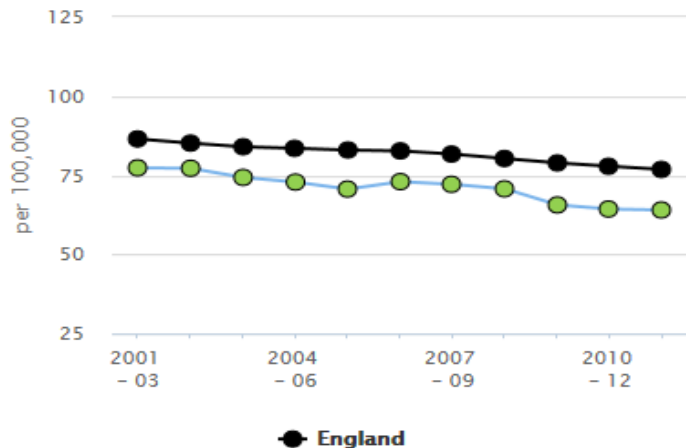
Period	Count	Value	Lower CI	Upper CI	South East	England
2001 - 03	1,378	97.4	92.3	102.7	95.7	109.0
2002 - 04	1,379	96.4	91.3	101.6	94.5	106.5
2003 - 05	1,329	91.8	86.9	97.0	92.1	103.8
2004 - 06	1,269	86.3	81.6	91.2	90.9	101.5
2005 - 07	1,275	84.9	80.2	89.7	88.4	99.8
2006 - 08	1,250	81.4	76.9	86.1	86.8	98.4
2007 - 09	1,292	81.9	77.4	86.5	85.9	97.3
2008 - 10	1,316	81.6	77.2	86.1	85.9	96.0
2009 - 11	1,326	80.4	76.1	84.9	84.8	94.5
2010 - 12	1,318	78.6	74.4	83.0	83.9	92.7
2011 - 13	1,321	77.4	73.2	81.7	81.8	91.3

Source: Public Health England (based on ONS source data)

4.05ii - Under 75 mortality rate from cancer considered preventable (Female)

Hampshire

Directly standardised rate - per 100,000



Period	Count	Value	Lower CI	Upper CI	South East	England
2001 - 03	1,207	77.4	73.0	81.9	80.4	86.5
2002 - 04	1,217	77.2	72.9	81.7	79.0	85.2
2003 - 05	1,184	74.3	70.1	78.7	78.7	84.0
2004 - 06	1,177	72.9	68.7	77.2	78.3	83.5
2005 - 07	1,164	70.7	66.6	74.8	78.2	83.0
2006 - 08	1,230	73.0	69.0	77.2	77.3	82.7
2007 - 09	1,237	72.2	68.2	76.3	75.1	81.7
2008 - 10	1,235	70.7	66.8	74.8	73.7	80.3
2009 - 11	1,163	65.6	61.9	69.6	72.0	78.9
2010 - 12	1,165	64.4	60.7	68.2	71.3	77.9
2011 - 13	1,184	64.0	60.4	67.8	70.4	76.9

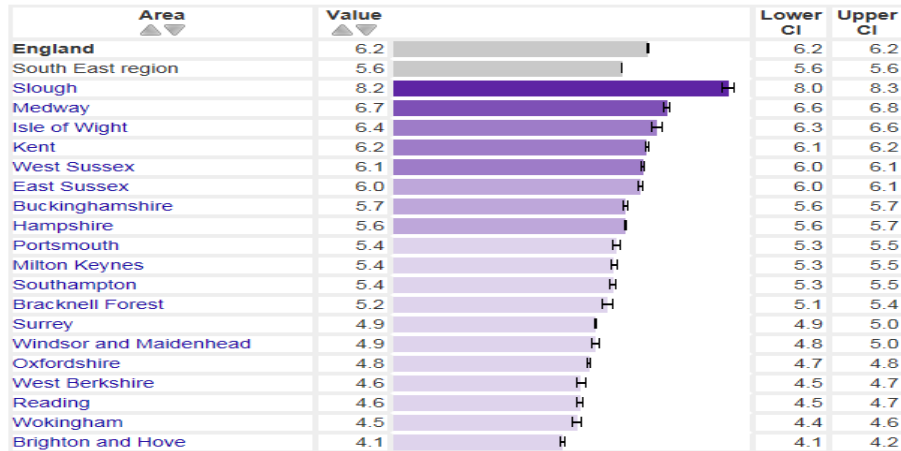
Source: Public Health England (based on ONS source data)

- Difference between men and women
- Rates starting to plateau in Hampshire for men

Staying Well: Diabetes

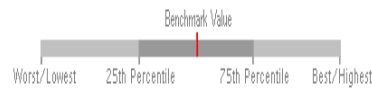
Diabetes prevalence 2013/14

Proportion - %



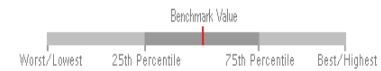
- Poor control and management of diabetes – leads to complication/disability
- County role is in partnership with Health and Districts to support healthy lifestyles especially diet and exercise

Compared with benchmark: ● Better ● Similar ● Worse ● Lower ● Similar ● Higher
○ Not Compared



* a note is attached to the value, hover over to see more details

Compared with benchmark: ● Better ● Similar ● Worse ● Lower ● Similar ● Higher
○ Not Compared



* a note is attached to the value, hover over to see more details

Indicator	Period	Hants		Region		England		England	
		Count	Value	Value	Value	Worst/Lowest	Range	Best/Highest	
Good blood sugar control in people with diabetes	2013/14	35,809	58.4%	60.6%	61.5%	47.9%		74.9%	
Good blood pressure control in people with diabetes	2013/14	43,132	70.3%	71.8%	71.9%	61.4%		81.2%	
Good cholesterol control in people with diabetes	2013/14	43,625	71.1%	72.4%	72.3%	65.4%		81.6%	
People with diabetes meeting treatment targets	2012	13,560	33.8%	36.1%	36.0%	30.2%		48.0%	

Indicator	Period	Hants		Region		England		England	
		Count	Value	Value	Value	Worst/Lowest	Range	Best/Highest	
Angina	2010/11 - 11/12	1,423	1.84	1.81	1.76	2.36		1.44	
Heart attack	2010/11 - 11/12	420	1.46	1.55	1.55	2.56		1.12	
Heart failure	2010/11 - 11/12	1,234	1.85	1.80	1.74	2.56		1.43	
Major amputation	2010/11 - 11/12	65	4.19	3.77	3.22	10.00		1.50	
Stroke	2010/11 - 11/12	643	1.45	1.37	1.34	1.93		1.03	
Kidney dialysis and transplant	2010/11 - 11/12	224	3.32	2.99	2.64	4.07		1.52	

Staying Well

- Proportion of working aged population is reducing; pressure on services and caring
- Reducing healthy life expectancy; focus on improving lifestyles and self management of health conditions, particularly diabetes
- Plateauing levels of Cancer mortality; improving early diagnosis and screening uptake;
- Higher levels of preventable mortality for SMI; improving access to services and social inclusion and employment chances
- Understanding impact of health conditions on disability (Mental health, cancer, neurological conditions, MSK)

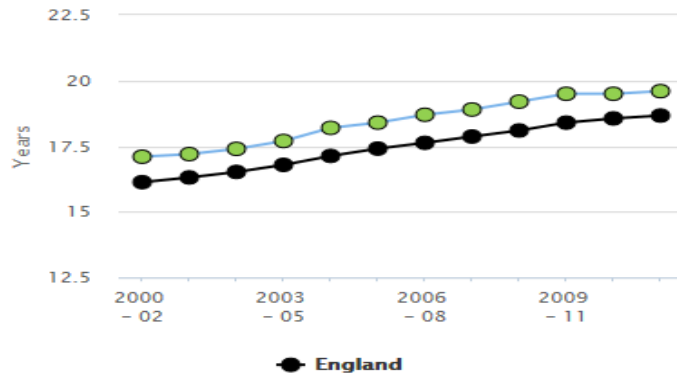
Ageing Well

- Life expectancy at 65 and disability-free life expectancy at 65 give us a measure of the health of our older population
- Falls and fractures in older people can lead to loss of independence and death – preventing falls has a major impact on health and wellbeing
- Social isolation and loneliness impact on health and wellbeing particularly for conditions such as dementia – reducing isolation can improve outcomes for all ages but particularly our older population

Ageing Well: Life expectancy

0.1ii - Life Expectancy at 65 (Male) Hampshire

Life expectancy - Years

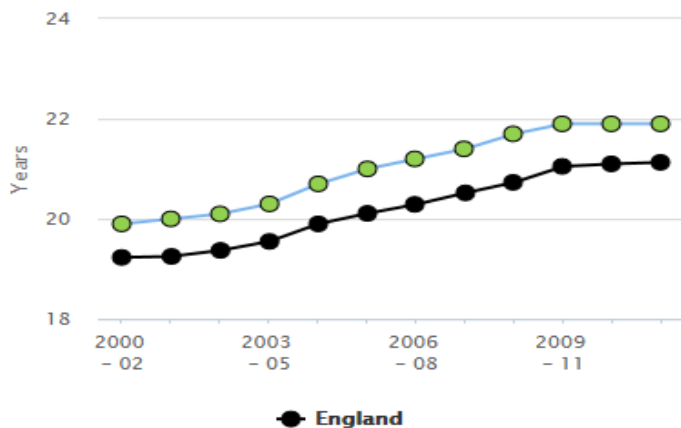


Period	Count	Value	Lower CI	Upper CI	South East	England
2000 - 02	-	17.1	16.9	17.2	16.8	16.1
2001 - 03	-	17.2	17.1	17.3	17.0	16.3
2002 - 04	-	17.4	17.3	17.5	17.1	16.5
2003 - 05	-	17.7	17.6	17.8	17.5	16.8
2004 - 06	-	18.2	18.0	18.3	17.8	17.1
2005 - 07	-	18.4	18.3	18.5	18.1	17.4
2006 - 08	-	18.7	18.5	18.8	18.4	17.6
2007 - 09	-	18.9	18.8	19.0	18.6	17.9
2008 - 10	-	19.2	19.0	19.3	18.8	18.1
2009 - 11	-	19.5	19.3	19.6	19.0	18.4
2010 - 12	-	19.5	19.4	19.7	19.2	18.6
2011 - 13	-	19.6	19.5	19.7	19.3	18.7

Source: Figures calculated by Office for National Statistics using ONS mortality data and mid-year population estimates.

0.1ii - Life Expectancy at 65 (Female) Hampshire

Life expectancy - Years



Period	Count	Value	Lower CI	Upper CI	South East	England
2000 - 02	-	19.9	19.8	20.0	19.8	19.2
2001 - 03	-	20.0	19.9	20.1	19.8	19.3
2002 - 04	-	20.1	20.0	20.2	20.0	19.4
2003 - 05	-	20.3	20.2	20.4	20.1	19.6
2004 - 06	-	20.7	20.6	20.8	20.4	19.9
2005 - 07	-	21.0	20.9	21.1	20.7	20.1
2006 - 08	-	21.2	21.1	21.3	20.9	20.3
2007 - 09	-	21.4	21.3	21.6	21.2	20.5
2008 - 10	-	21.7	21.5	21.8	21.4	20.7
2009 - 11	-	21.9	21.8	22.0	21.6	21.1
2010 - 12	-	21.9	21.8	22.0	21.6	21.1
2011 - 13	-	21.9	21.8	22.0	21.7	21.1

Source: Figures calculated by Office for National Statistics using ONS mortality data and mid-year population estimates.

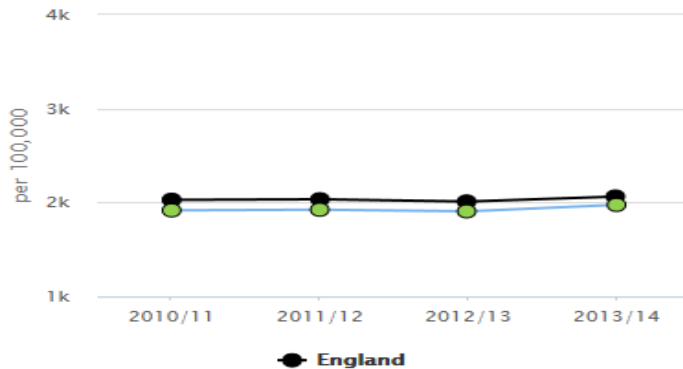
- Life expectancy has been increasing, starting to plateau
- Healthy life expectancy is decreasing

Ageing Well: Falls

2.24i - Injuries due to falls in people aged 65 and over (Persons)

Hampshire

Directly standardised rate - per 100,000



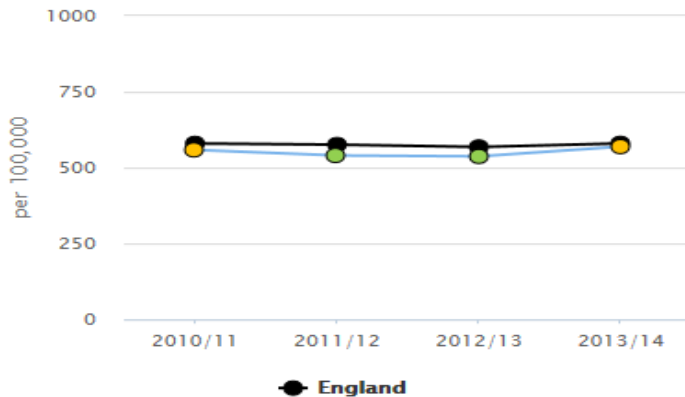
Period		Count	Value	Lower CI	Upper CI	South East	England
2010/11	●	4,973	1,918	1,862	1,974	1,994	2,030
2011/12	●	5,186	1,925	1,871	1,980	1,982	2,035
2012/13	●	5,259	1,907	1,854	1,962	1,962	2,011
2013/14	●	5,581	1,976	1,923	2,030	2,050	2,064

Source: Calculated by West Midlands Knowledge and Intelligence Team from data from the Information Centre for Health and Social Care - Hospital Episode Statistics (HES) and Office for National Statistics (ONS) - Mid Year Population Estimates

4.14i - Hip fractures in people aged 65 and over (Persons)

Hampshire

Directly standardised rate - per 100,000



Period		Count	Value	Lower CI	Upper CI	South East	England
2010/11	●	1,490	559	529	589	582	580
2011/12	●	1,469	540	512	570	573	576
2012/13	●	1,493	537	509	566	554	568
2013/14	●	1,624	569	541	599	585	580

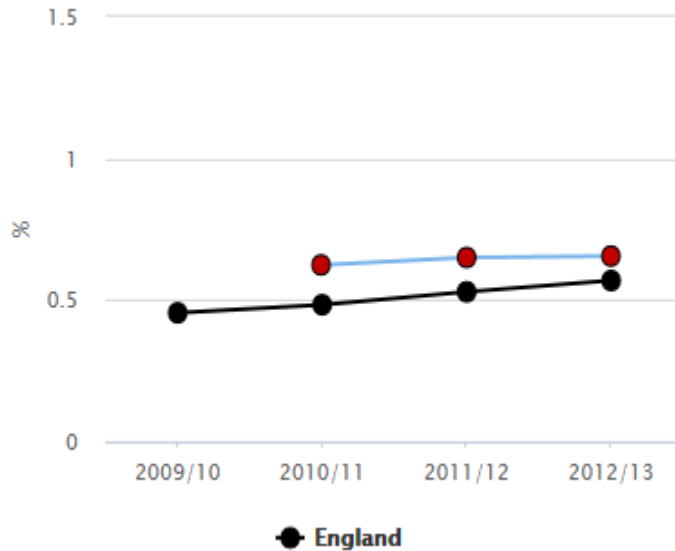
Source: Hospital Episode Statistics (HES), Health and Social Care Information Centre for the respective financial year, England. Hospital Episode Statistics (HES) Copyright © 2014, Re-used with the permission of The Health and Social Care Information Centre. All rights reserved. Local Authority estimates of resident population, Office for National Statistics (ONS) Unrounded mid-year population estimates produced by ONS and supplied to the Public Health England

- Rates show small increase
- Absolute numbers will impact on resources/outcomes for older people

Ageing Well: Dementia

Prevalence of dementia Hampshire

Proportion - %



Period		Count	Value	Lower CI	Upper CI	South East	England
2009/10		-	-	-	-	-	0.45
2010/11	●	8,303	0.62	0.61	0.64	0.51	0.48
2011/12	●	8,713	0.65	0.64	0.66	0.55	0.53
2012/13	●	8,840	0.66	0.64	0.67	0.59	0.57

Source: QOF

Focus on

- Improving independence and reducing isolation
- Prevention