

Teenage Pregnancy: An update and overview of progress being made in Hampshire.

Gina Birkett

3rd June 2015

Gina.Birkett@hants.gov.uk

Context for Teenage Pregnancy

- Teenage conception and maternity rates are higher in deprived areas.
- Teenage conception not experienced in the same way by young people: abortion more likely outcome in less deprived areas.
- Much higher risk for children born to women under 20 to live in poverty and experience other inequalities
- One fifth of the estimated number of female NEETs 16-18 are teenage mothers
- Educational attainment: Girls attending higher performing schools are less likely to conceive and more likely to have an abortion if they do conceive.

GCSE attainment 2014

- Pupils entitled to FSM (ever) – 32.6% achieve 5 A-C GCSEs including English and Maths
- 65.7% of the rest of the school population achieve 5 A-C GCSEs including English and Maths

Teenage conception data

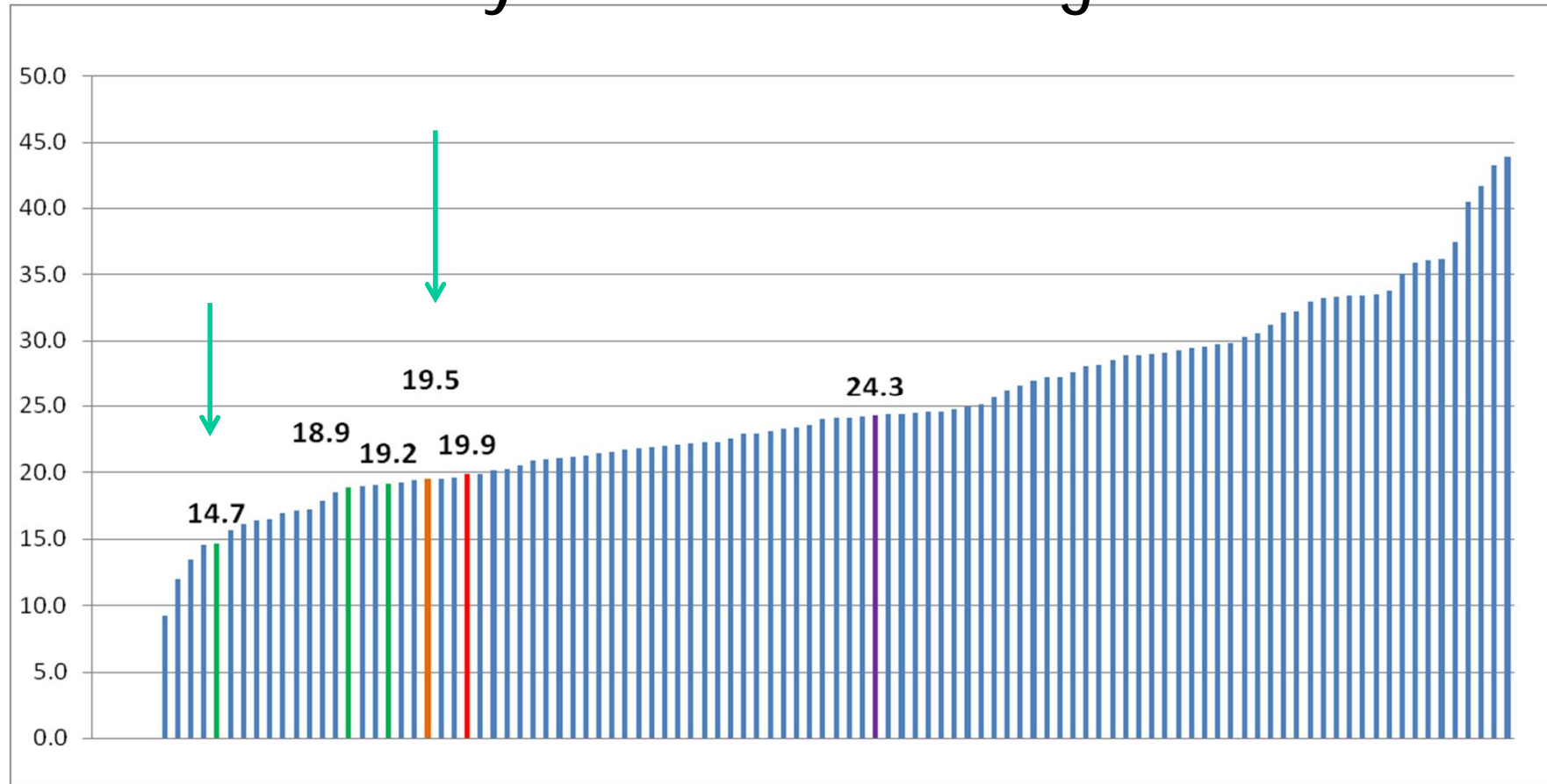
- Provisional 2013 Hampshire under 18 conception data shows the rate was 19.5 per 1000, a decrease of 7.6% from the 2012 final rate of 21.1
- In number terms we had 465 conceptions in 2013 with 55% leading to abortion.
- The target set for 2010 was a reduction of 45% which we have achieved by 2013.
- Hampshire aggregated 2011/13 rate was 21.3.
National rate was 27.6.



Hampshire Rates and Numbers

Hampshire County	2011-13 rate (2010-12)	2011-13 number (2010-12)	% change in rate 98/00 - 11/13
Hampshire	21.3 (22.9)	1541 (1669)	-36.0
Gosport	26.7 (31.7)	121 (146)	-47.1
Havant	30.7 (32.7)	209 (224)	-45.0
East Hampshire	14.2 (17.8)	219 (228)	-38.0
★ Fareham	18.7 (18.5)	111 (113)	-37.5
New Forest	20.5 (21.9)	181 (194)	-36.9
Hart	13.5 (14.2)	67 (70)	-35.7
Winchester	13.8 (15.3)	89 (99)	-33.7
Basingstoke	24.1 (25.5)	219 (228)	-33.6
Test Valley	19.8 (20.4)	128 (135)	-33.3
★ Rushmoor	28.6 (26.4)	151 (143)	-27.8
Eastleigh	24.2 (27.5)	166 (191)	-13.3

2013 under 18 conception rate per 1000 females aged 15-17 years by top tier authority & statistical neighbour



What are we doing to reduce TP

- Improve access to good quality SRE
- Improve access to contraception & Sexual Health services
- Target interventions to at risk groups, high rate areas
- Support pregnant young women, young fathers to be & young parents

Good practice

- Free multi-agency SRE training
- Speakeasy for parents to help discuss SRE
- Pathways in place to identify risk of CSE for young people accessing free condoms
- Life coaching for children in care and care leavers to raise aspirations
- Targeted single gender SRE group work
- Multi-agency care pathway for pregnant young women



The strongest associated risk factors for pregnancy before 18 are:

- Free school meal eligibility
- Persistent school absence
- Slower than expected progress between KS2 & KS3
- *Low maternal educational aspirations of daughter at age 10 also a risk factor (link to Supported Families Programme)

The best form of contraception
is aspiration

What we need to do going forward

- Raise aspirations and provide opportunities through education and employment and through social activities
- Give young people realistic and real choices
- Improve outcomes for children of teenage mothers
- Improve quality of SRE to enable young people to make informed choices and keep themselves safe
- Provide good quality and accessible young people's sexual health services



Any questions?



Hampshire
County Council