

Monitoring & Evaluation

Gathering evidence for the future

A Better Connected South Hampshire

John Rider
Solent Transport

John Preston
University of Southampton



UNIVERSITY OF
Southampton



Travel within the region (SRTM, 2010)

- 3.2 million daily person trips (all modes, origin or destination within region)
- 2.8 million of these contained within the region
- 70% of trips made by mechanised modes (predominantly the car)
- Highest levels of active travel in cities and Gosport
- 60% of work trips by car
- 68% of all highway trips under 5km
- 50% of M27 flows fewer than 4 junctions
- 63,000 daily public transport boardings
- Active modes are 25% of all daily trips

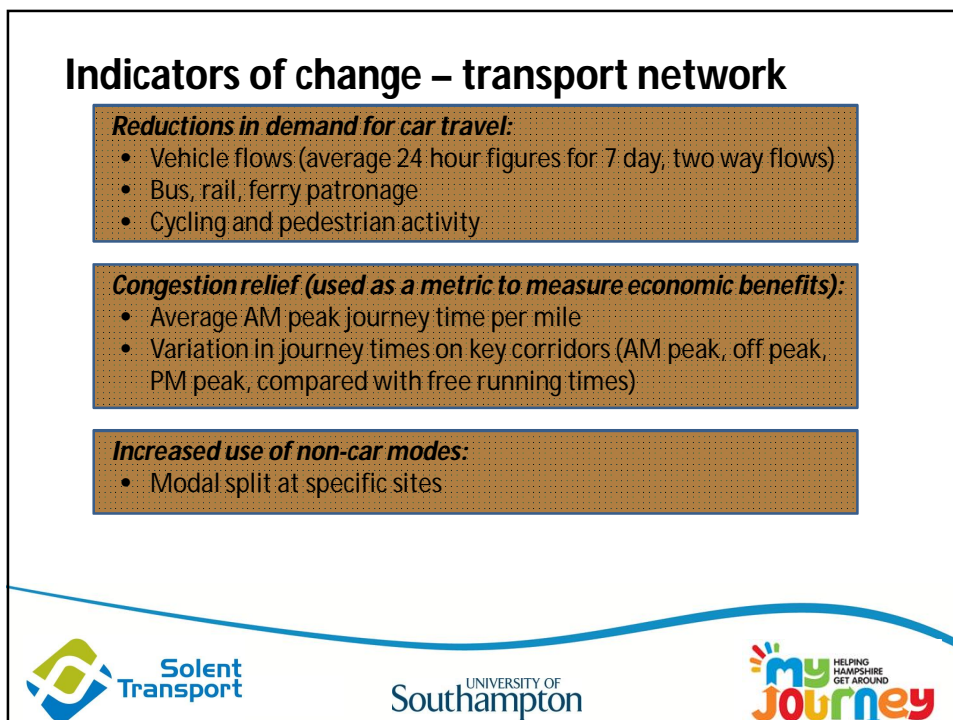
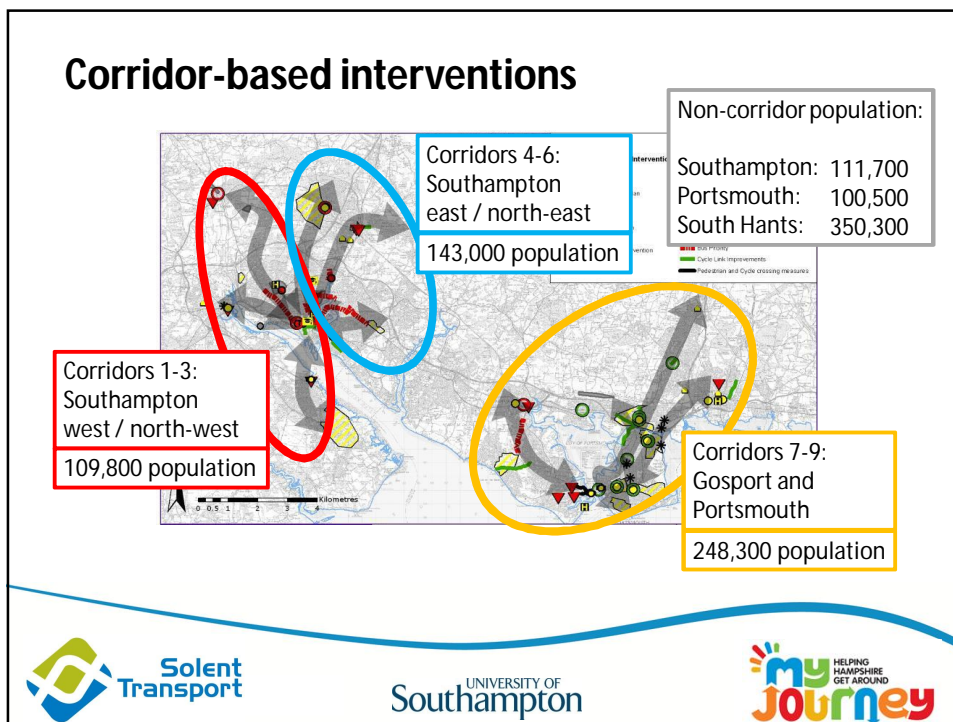


Local transport network



UNIVERSITY OF
Southampton





Postal Surveys: Congestion Relief and Carbon Case Study

	Initial Contacts	Returns 2013/14	Returns 2014/5
Woolston (Pilot)	1,000	131	53
Eastleigh	8,000	1,216	535
Fareham	8,000	1,386	647
Gosport	8,000	1,102	535
Total	25,000	3,835 (15%)	1,770 (46%)



UNIVERSITY OF
Southampton



Congestion Relief and Carbon Case Study 2013/14 Results (per person per week)

	Walk (miles)	Cycle (miles)	Bus (miles)	Train (miles)	Car Driver (miles)	Car Passenger (miles)	Other (miles)	Total (miles)	Mean Distance per Journey (miles)	Carbon Dioxide Emissions (kg)
Eastleigh	4 2%	2 1%	4 2%	22 11%	126 63%	23 11%	18 9%	199	20	26.6
Fareham	4 2%	2 1%	3 1%	19 8%	155 65%	30 12%	25 10%	238	23	32.4
Gosport	4 2%	5 2%	4 2%	12 6%	127 62%	20 10%	35 17%	207	21	26.3



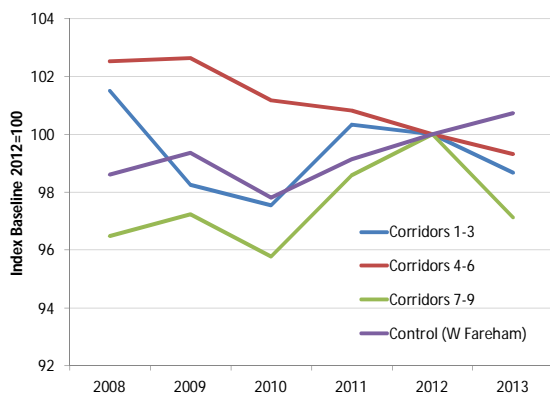
UNIVERSITY OF
Southampton



Changes since 2012 Baseline – examples

Average aggregated traffic flows (AADTs) by corridor group

Data sources: HCC, SCC, DfT



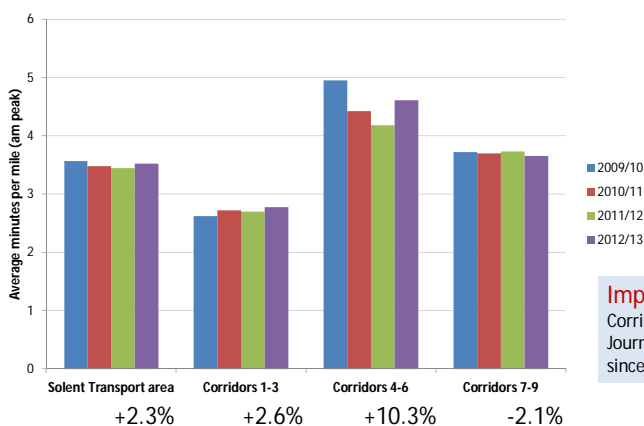
Impact of Policy?
 Corridor 7, Gosport.
 Overall traffic down 2.7% since 2012 of which 0.3% could be due to PJPs, 0.4% due to Eclipse. Also WTPs, bus infrastructure policy, My Journey web site etc.



Changes since 2012 Baseline – examples

Congestion index (average minutes per mile during the am peak 0800-0900)

Data sources: HCC, PCC, SCC, Trafficmaster, DfT



Impact of Policy?
 Corridor 7, Gosport (N/bound)
 Journey times down 4.3% since 2011/12.



Changes since 2012 Baseline – examples

Network reliability – Average delay (compared with 'free flow')

Data sources: HCC, PCC, SCC, Trafficmaster, DfT

	Average delay (minutes per mile)					
	Morning Peak (0800-0900)		Off Peak (1000-1600)		Evening Peak (1700-1800)	
	2011/12	2012/13	2011/12	2012/13	2011/12	2012/13
Solent Transport Area	1.59	1.68	0.73	0.71	1.30	1.28
Corridors 1-3	1.17	1.29	0.62	0.62	0.93	0.94
Corridors 4-6	2.39	2.86	0.70	0.72	1.50	1.58
Corridors 7-9	1.50	1.41	0.81	0.77	1.43	1.35

Traffic levels have dropped slightly on all corridor groups, but **only Corridors 7-9** (Portsmouth and Gosport) have seen **reduced delays**.

The number of congested links is largely unchanged, but the amount of affected road space has **decreased by a third**.

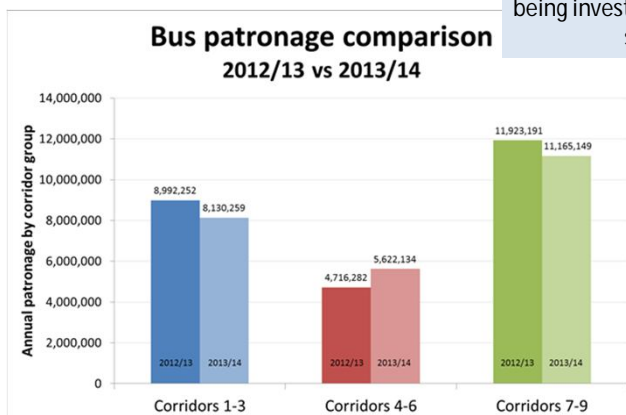


Changes since 2012 Baseline – examples

Bus Patronage

Data sources: Bus operators

Some discrepancies (e.g. route and service changes) in these data are still being investigated but reflects unstable service network.



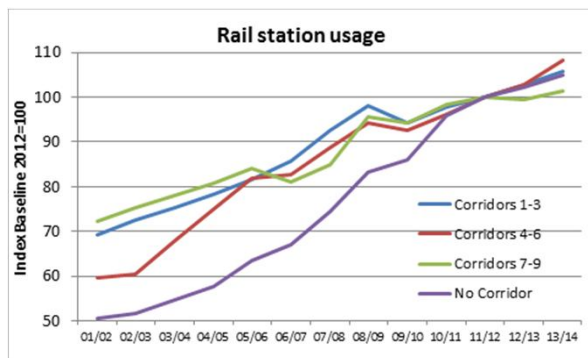
DfT figures indicate area wide usage has increased slightly over this period:
 Hampshire +1.6%
 Portsmouth +2.0%
 Southampton +1.1%



Changes since 2012 Baseline – examples

Rail station usage

Data sources: ORR



Rail usage has continued to grow, particularly at stations near Southampton. Stable service network.

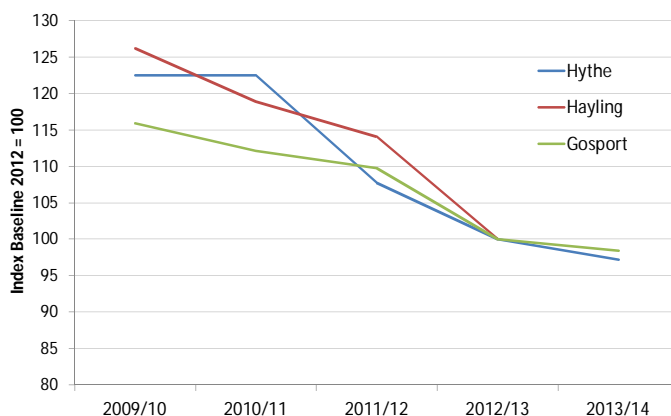


Changes since 2012 Baseline – examples

Ferry usage

Data sources: HCC, Ferry operators

Ferry usage continues to fall



Changes since Baseline

Active Travel

Data sources: DfT, Sport England

	Walk		Cycle		Walk or cycle	
	2010/11	2012/13	2010/11	2012/13	2010/11	2012/13
South Hampshire	91%	87%	21%	20%	92%	88%
Southampton	91%	88%	14%	17%	91%	88%
Portsmouth	93%	89%	20%	21%	93%	90%

Active Steps programme run by Sustrans can more than double the amount of time spent on physical activity (from 4.6 hours to 9.7 hours per week) and halve the amount of time spent on travelling by car (from 5.8 hours to 2.7 hours per week).



Overall Conclusions

Although travel patterns are highly variable, some trends beginning to emerge over the last year:

1. Traffic on corridor has reduced by between 2% to 4% compared to off corridor.
2. Some of this reduction can be attributed to LSTF measures.
3. Bus demand is stabilising but with some suggestion that declines on corridor offset by increases off corridor.
4. Rail demand continues to grow.
5. Active travel a mixed picture – some indications that cycling is growing but walking is continuing to decline.



Key Projects Delivered During 2013/14

MAKING IT HAPPEN



UNIVERSITY OF
Southampton



Infrastructure

During 2013/14 we delivered...

- Over 300 RTI screens across the region (250 Planned)
- Way finding totems across the region + fingerpost signage across Portsmouth
- New and improved bus stops along Newgate Lane to support access to the Daedalus MDA
- New Cycling infrastructure (Bishopstoke – Eastleigh cycle route)
- Station quarter redevelopment in Southampton. Once completed this will deliver 4,000 new jobs and 800 homes
- Support for the Eastleigh Car Club resulting in
 - 18% more bookings
 - 20% more mileage
 - An almost 400% increase in bookings by non Council Staff



UNIVERSITY OF
Southampton



Spotlight on Gosport

- Comprehensive package of measures delivered during 2013/14
 - Improvements to Eclipse bus corridor (new bus shelters and RTI)
 - Improvements at Fareham and Gosport bus stations (RTI and Way finding)
 - Workplace Travel Planning through Newgate Lane Travel Planning Forum
 - PJP with over 2,100 households
- PJP follow up surveys suggest a reduction in single occupancy car use of 10% for commuting and 19% for leisure



Working with schools and colleges During 2013/14 we...

- Engaged with over 2,000 pupils and 150 school staff as part of our 'Bike It' programme
 - 4 schools have new scooter pods and more than 300 bikes were fixed by the Dr Bike
- Introduced the Modeshift STARS initiative with a conference in February 2014 attended by 50 schools
 - Installed 300 scooter spaces and 18 cycle spaces at 2 schools
 - Encouraged 8 schools to sign up to the Scooter Challenge in Summer 2013
 - Provided over 1,000 children with scooter training
- LSTF funding was used to secure additional funding from the Hampshire Public Health team to extend the offering county wide and through the entire 2014/15 academic year



Working with Business During 2013/14 we....

- Organised 2 large business conferences in Southampton and Portsmouth – 160 delegates and 30 exhibitors
- LSTF was used to attract a further £520,000 EU funding to support Sustrans work with SMEs
- Completed our second Commuter Challenge
 - 1,656 participants across 160 businesses
 - 35,936 journeys
 - 313,000 miles by car saved
- 3 months after the challenge, 7% participant who had not been cycling and 15% who had not been walking were now using those modes regularly



Supporting the local economy During 2013/14 we....

- Supported 1,850 young job seekers with free public transport and travel advice. More than 43% found employment during the 3 month support period
- Introduced a new Park and Sail service in Portsmouth. Over the August Bank Holiday more than 1,000 people used the service with 96% rating it good or very good
- Opened the new Sustainable Distribution Centre in Nursling area of Southampton. Customers include the General Hospital, Southampton City Council, ABP and Meachers Logistics



It all adds up to positive change During 2013/14 we.....

- Engaged directly with more than 45,000 people and shared online content with more than 42,500 people and their friends
 - 300 times more likely to change behaviour for long term through these kinds of programme
- Recorded increases of 5.3% more pupils cycling to school in Southampton and 3% in South Hampshire
- Helped thousands of tourists in Portsmouth with on-street travel advisors
 - 65% said they were more likely to visits the city again
 - 56% were encouraged to visit additional attractions as a result of an advisor
- Achieved recognition across a number of our campaigns
 - Silver Award CIPR Pride awards (My Journey)
 - 3rd Place 2013 2Degrees Sustainability Awards (Commuter Challenge)
 - 1st Prize 2013 International Sign Design Awards (Legible Cities - Southampton)
 - Innovation Award Society of Environmental Graphic Design (Way finding totems - Portsmouth)
 - Transport City of the Year 2013 – Southampton

