


Hampshire Better Care Fund Update

November 2014




Our Challenges - recap

- Ageing population with Long Term Conditions
 - Reducing inequalities
 - Whole system complexity
 - Difficult financial situation
 - Urgent Care System pressures
 - Workforce overall in local labour market
 - Changing behaviours and cultures
- 

What does the BCF programme aim to do?

- The policy was announced by the Government in June 2013 intended as a “catalyst” for change.
 - Provides a single pooled budget to support health and social care services to work more closely together in local areas.
 - Underpins joint plans developed and agreed by the Hampshire Health and Wellbeing Board and approved by all five Clinical Commissioning Groups and Hampshire County Council.
 - Satisfy national conditions and performance measures.
- 

Our Hampshire Plan

- Supports and accelerates local integration of health & care services through joint commissioning, joint delivery and wider partnership working.
 - Helps address demographic pressures in adult social care
 - Facilitates the provision of more joined up care in the community by changing the way health and social care work together to improve outcomes for people, reducing duplication.
- 

Components to our plan

— part 1: joining up commissioning and delivery

Plans for the BCF implementation are being developed in key phases:

Phase 1

- 2014 - 2016
- Integrating delivery of services for older people including dementia and carers
- Establish a joint integration team sponsored by HCC and all CCGs to implement the programme

Phase 2

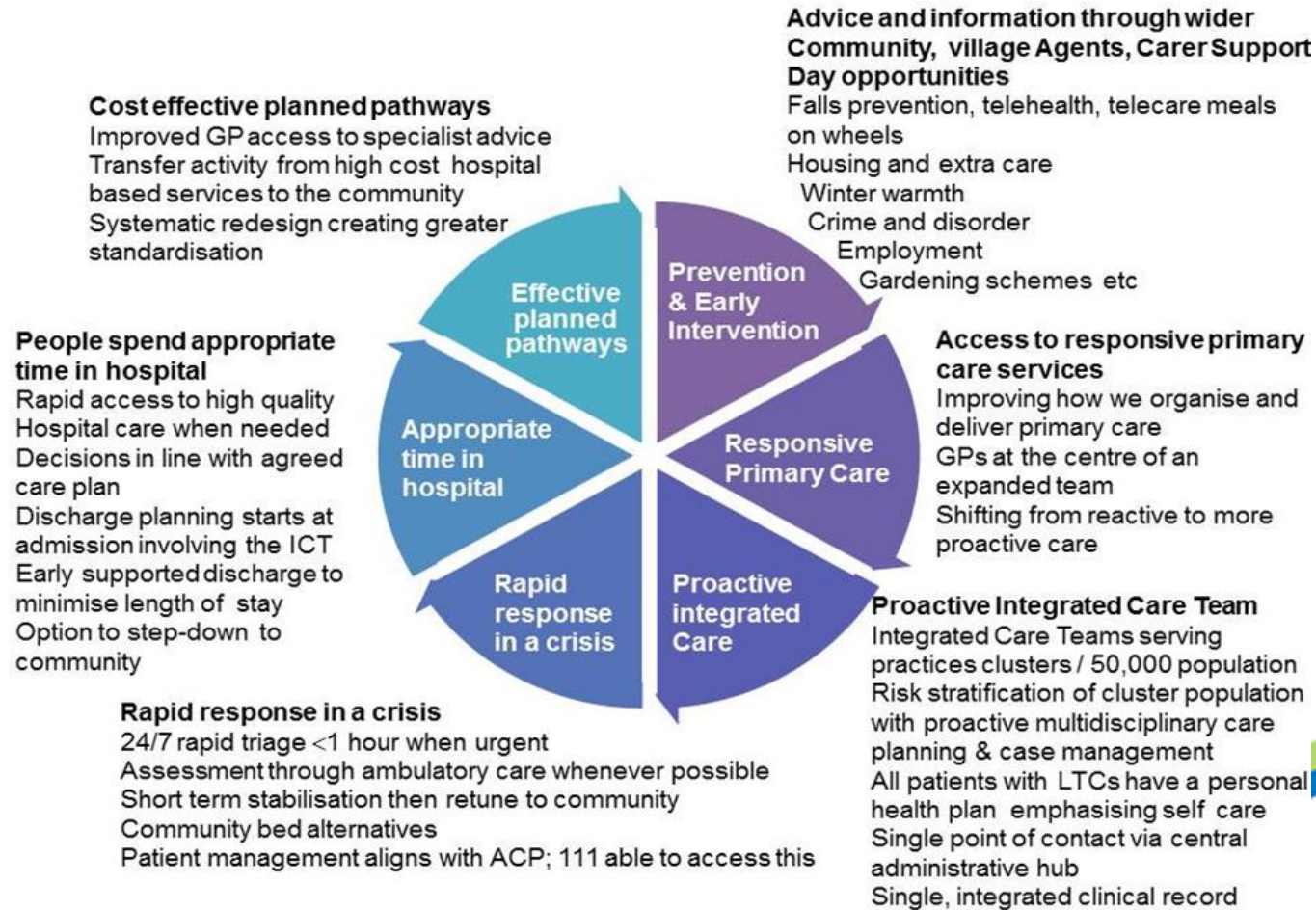
- 2016 - 2018
- People with learning disabilities and mental health needs, adults with long term conditions and people who may need NHS Continuing Healthcare

Phase 3

- 2018 - 2019
- Young people in transition including those who require complex rehabilitation and access to NHS Continuing health care

Phase 1 Out of hospital care model

Delivering real changes:

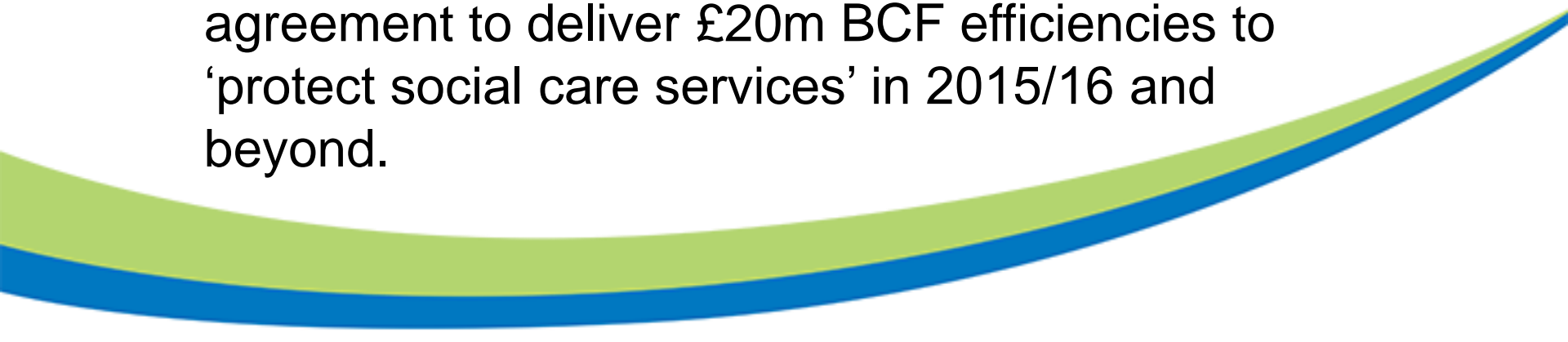


Phase 1 Out of hospital care model

Integrated Care Teams – with primary care at the centre!



Pooling budgets and protecting social care services

- For 2015/16 BCF statutory requirement:
 - Pooled budget totalling £80m to be spent on integrated care to realise efficiency savings.
 - BCF 'plus' total funding of £280m including
 - Care at home
 - Continuing health care
 - Funded nursing care
 - BCF statutory pooled budget
 - All partners have signed up to a 'risk share' agreement to deliver £20m BCF efficiencies to 'protect social care services' in 2015/16 and beyond.
- 

Components to our plan

— part 2: Commitment to agreed transformation work streams to increase efficiency

Telehealth

Re-ablement

Discharge to assess

NHS CHC and FNC

Care at Home

Workforce Efficiency


Partnership funding

Local factors

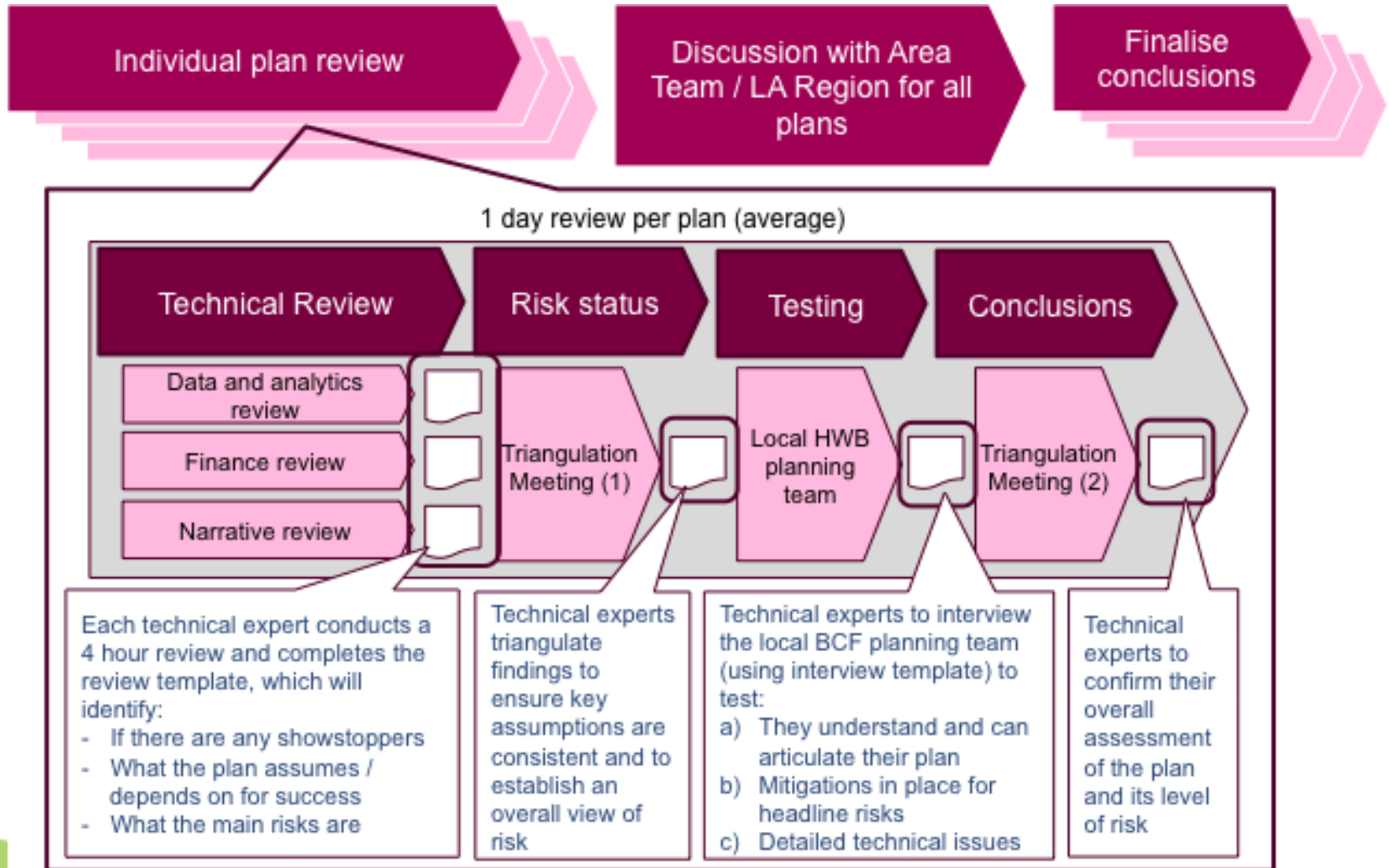
Competing issues: e.g.

- Tripartite System Resilience monitoring quality of plans and system risks
- Co-commissioning (NHSE / CCGs)

BCF Programme – progress since submission

- Commitment to financial risk share agreement confirmed
 - Enabler work streams launched e.g. workforce
 - Monitoring & evaluation framework out for consultation
- 


Considered through National Consistent Assurance Review (NCAR) 19 September – 29 October



Outcome of NCAR

– Approved with Support

*...“I am pleased to let you know that, following the Nationally Consistent Assurance Review (NCAR) process, provided there is no material change in circumstance and the 15/16 Mandate is published as expected, your plan will be classified as **‘Approved with Support’** once the 15/16 Mandate has been published. This recognises that whilst your plan is strong the review process identified a number of areas for improvement which once addressed will enable you to move to a fully approved status. This category means that your plan will be approved and your BCF funding will be made available to you.....”*



Next Steps

- Maintain leadership focus & prioritisation of capacity
 - Strengthen communications, engagement & involvement
 - Progress implementation of “Out of Hospital care” models and efficiency project plans at local and county levels
 - Develop financial strategies to ‘harvest’ savings
 - Formulate the legal framework to underpin joint working approach
- 