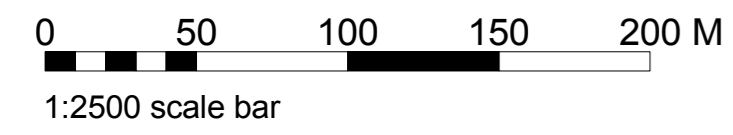
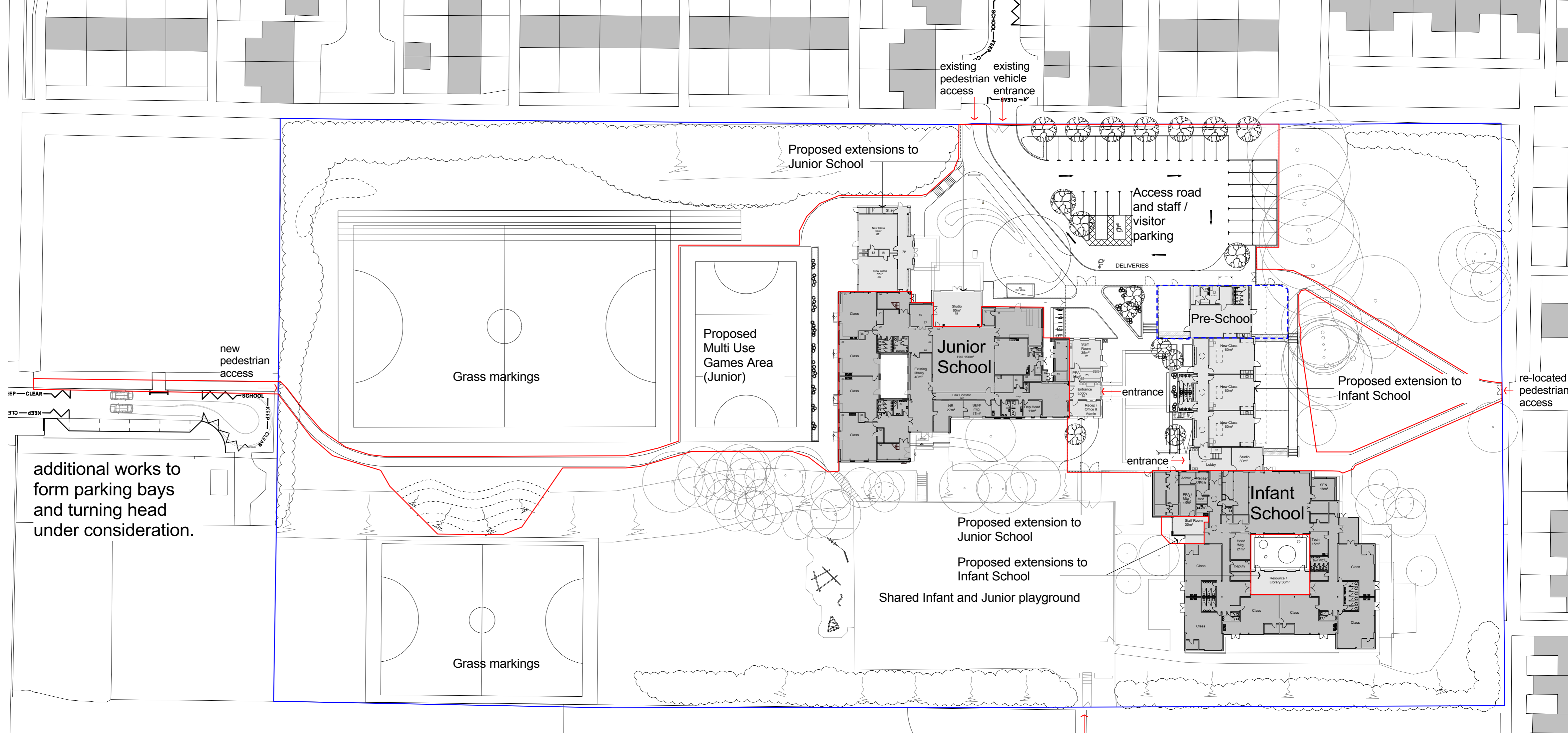
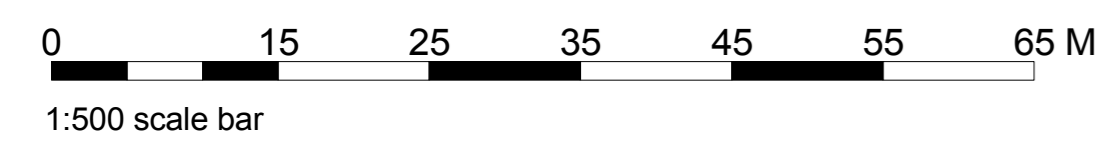


1. Site Location Plan at 1:2500 (A1)



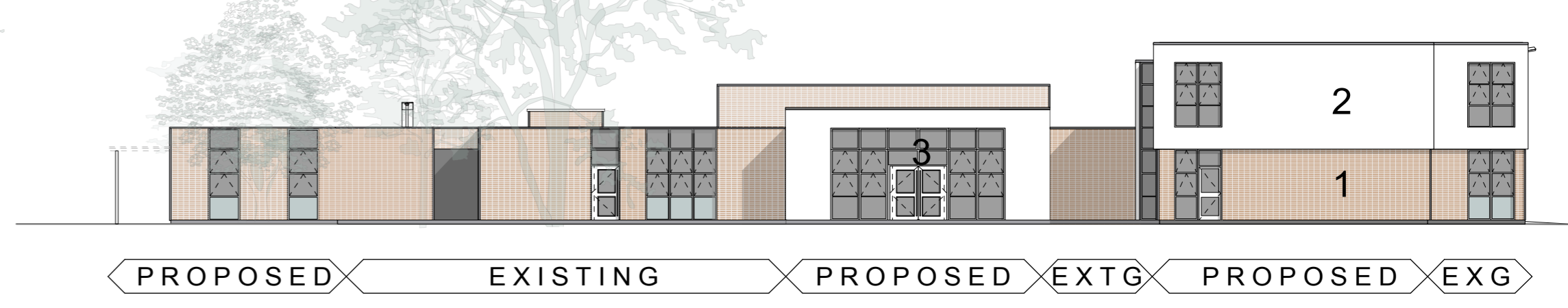
- Plan Key**
- Extension
 - Existing Building
 - Extent of works related to this project
 - HCC ownership (not incl. Highways)



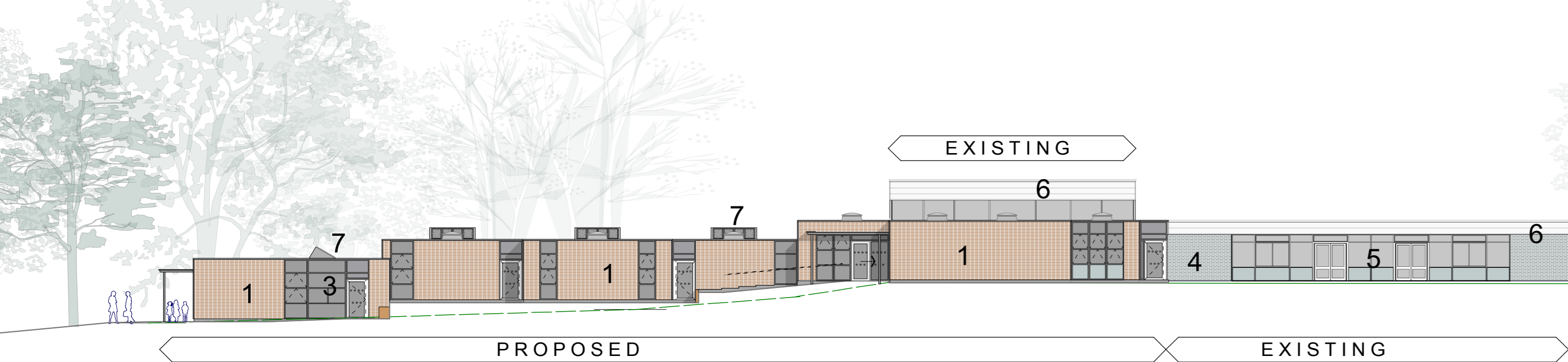
2. Site Plan at 1:500 (A1)



3. Infant School - East Elevation at 1:200 (A1)



5. Junior School - North Elevation at 1:200 (A1)



4. Infant School - West Elevation at 1:200 (A1)



6. Junior School - West Elevation at 1:200 (A1)

- Elevations Key**
- 1 Brick slips (to match recent re-clad - infant school in differing tone)
 - 2 Warm white insulated render.
 - 3 Aluminium window system with glazing and panels (to match re-clad).
 - 4 Existing brickwork.
 - 5 Existing window system.
 - 6 Existing painted timber boarding
 - 7 Rooflight.

Notes

- 1 This drawing is © copyright Hampshire County Council 2013. No unauthorised reproduction of any kind is permitted.
- 2 No Dimensions to be scaled from this drawing
- 3 This map is reproduced from Ordnance Survey material with the permission of Ordnance Survey on behalf of the controller of Her Majesty's Stationery Office © Crown copyright. Unauthorised reproduction infringes Crown Copyright and may lead to prosecution or civil proceedings. (100019180), (2013)

rev	description	date	by

		HCC Property Services, Three Minsters House, 76 High Street, Winchester SO23 8UL. tel: (01962) 847801	
PROJECT Merton Junior & Infant School 1FE Extension		SHEET CONTENTS Proposed Site Plan & Elevations	
SCALE Various	DATE Jan 13	DRAWN SGM	CHKD. -
DRAWING No. P09156 - 05		REVISION	