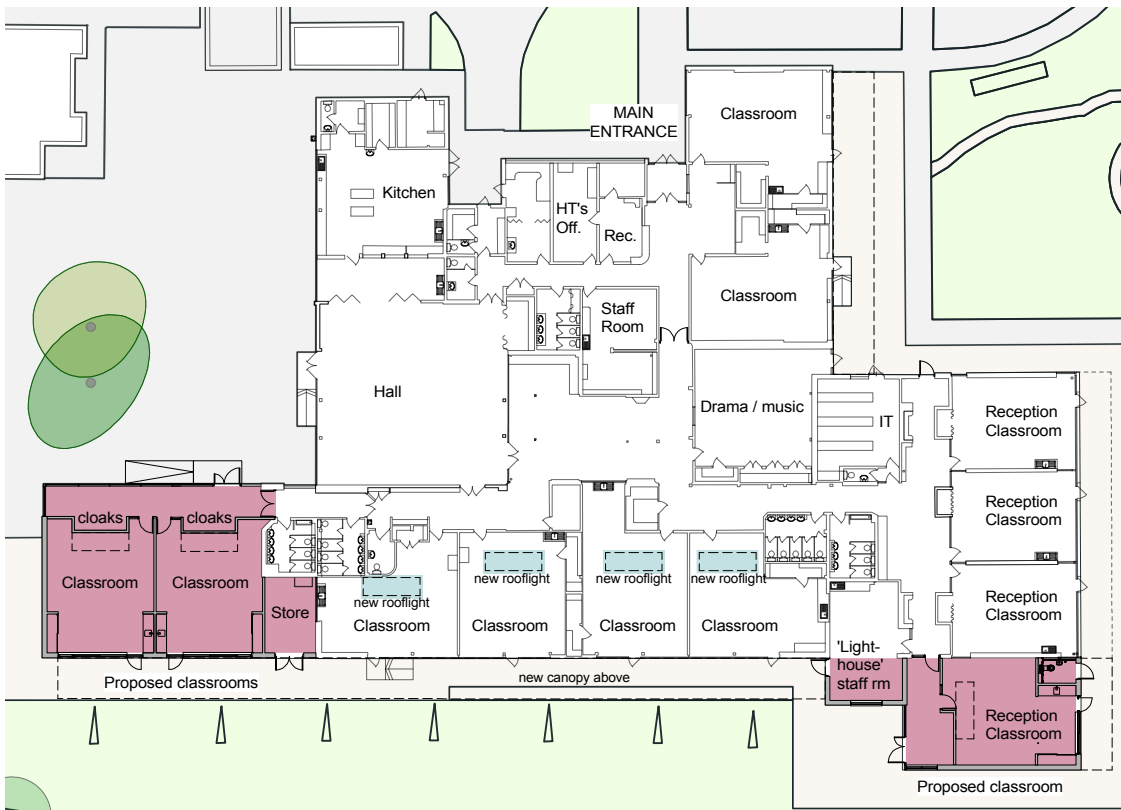
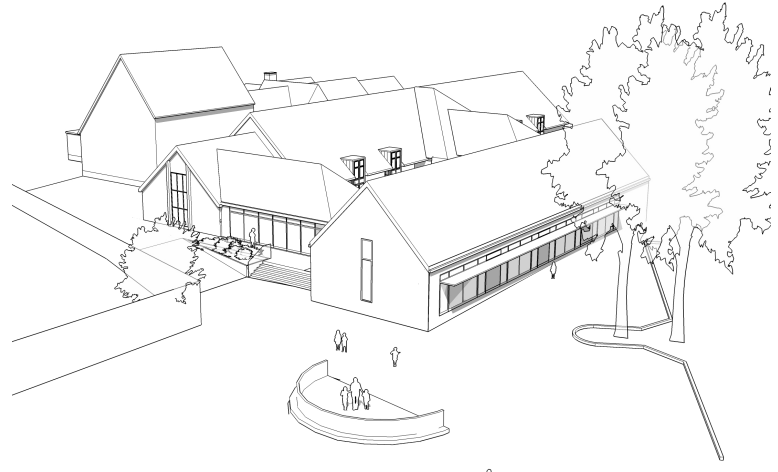




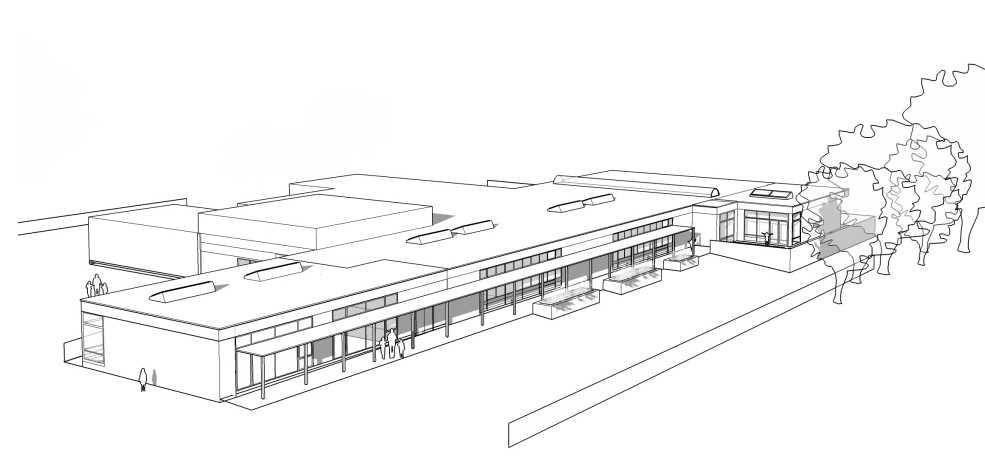
Junior School Plan - 1:500



Infant School Plan - 1:500



Junior School Proposed New Classrooms



Infant School Proposed New Classrooms



Site Plan - 1:1000



HCC Property Services,
Three Minsters House,
76 High Street, Winchester SO23 8UL.
tel: (01962) 847801

Key

- Proposed extension
- Proposed refurbishment

Notes	
<p>1 This drawing is © copyright Hampshire County Council 2014. No unauthorised reproduction permitted. All rights reserved.</p> <p>2 No dimensions are to be scaled from this drawing</p>	<p>3 This map is reproduced from Ordnance Survey material with the permission of Ordnance Survey on behalf of the controller of Her Majesty's Stationery Office © Crown Copyright. Unauthorised reproduction infringes Crown Copyright and may lead to prosecution or civil proceedings. (100019180), (2014)</p>

PROJECT				SHEET CONTENTS	
Locks Heath Infant and Junior Schools				BLAPP Proposals	
SCALE	DATE	DRAWN.	CHKD.	DRAWING No.	REVISION
Refer to drawings	06/02/14	PG	JC	P10053 I/J-BLAPP	-
				FILE REF.	P10053 -200 GA Plans

