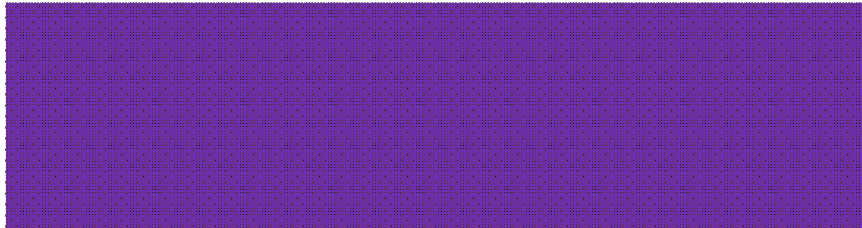


# Monitoring & Evaluation

## Gathering evidence for the future



### TfSHIoW – Transport

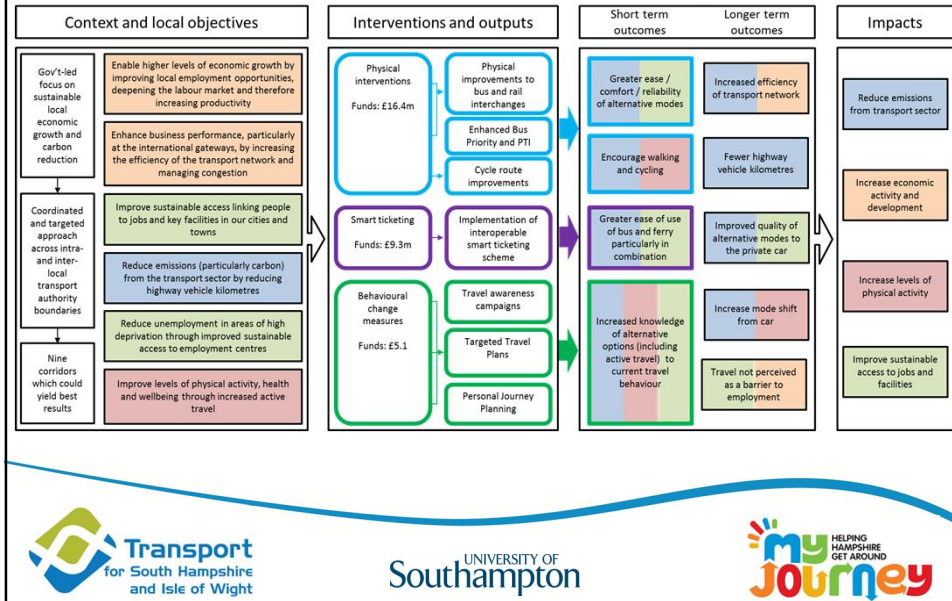
- 3.2 million daily person trips (all modes, origin or destination TfSH)
- 2.8 million of these are contained within the TfSH area
- 70% of trips are made by mechanised modes (predominantly the car)
- Highest levels of active travel in cities and Gosport
- 60% of work trips by car
- 68% of all highway trips are under 5km
- 50% of M27 flows fewer than 4 junctions
- 63,000 daily public transport boardings
- Active modes are 25% of all daily trips



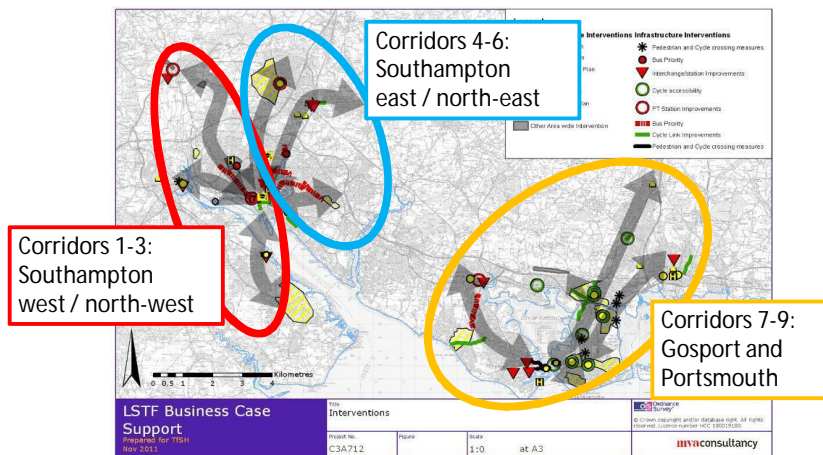
Local transport network



# Objectives, outputs and impacts



# Corridor-based interventions



## Research questions

### ***Corridor-based public transport improvements***

What (short-term and longer-term) outcomes have been achieved for the interventions in terms of:

- reductions in demand for car travel
- congestion relief
- use of non-car modes
- carbon emissions
- road safety?

### ***Targeted behaviour change measures***

How effective have behaviour change measures been to promote non-car use in terms of:

- use of non-car modes
- level of physical activity/active travel?



## Indicators of change

### **Use of transport network**

#### ***Reductions in demand for car travel:***

- Vehicle flows (average 24 hour figures for 7 day, two way flows)
- Bus, rail, ferry patronage
- Cycling and pedestrian activity

#### ***Congestion relief (used as a metric to measure economic benefits):***

- Average AM peak journey time per mile
- Variation in journey times on key corridors (AM peak, off peak, PM peak, compared with free running times)

#### ***Increased use of non-car modes:***

- Modal split at specific sites



## Indicators of change

### Travel behaviour and attitudinal change

#### Telephone survey of residents:

- Area specific: Southampton; Portsmouth; South Hampshire  
Respondents then assigned to corridor groups or control group

#### Online and postal cohort survey:

- Respondents recruited from targeted areas (postal version) and through email contacts and social media (online version)

#### Travel Plans:

- Personal Journey Planning (PJP)
- Workplace Travel Plans (targeting major employers and sites)
- College and University Travel Plans
- Hospital Travel Plans
- Public Transport Interchange Travel Plans

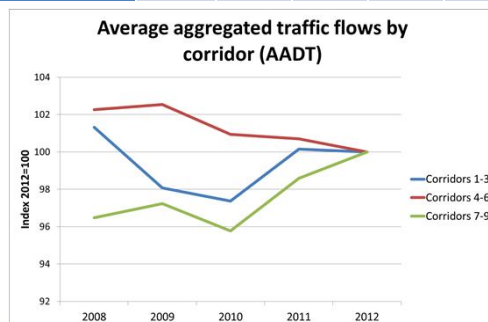


## Baseline results – examples

### Average aggregated traffic flows (AADTs) by corridor group

Data sources: HCC, SCC, DfT

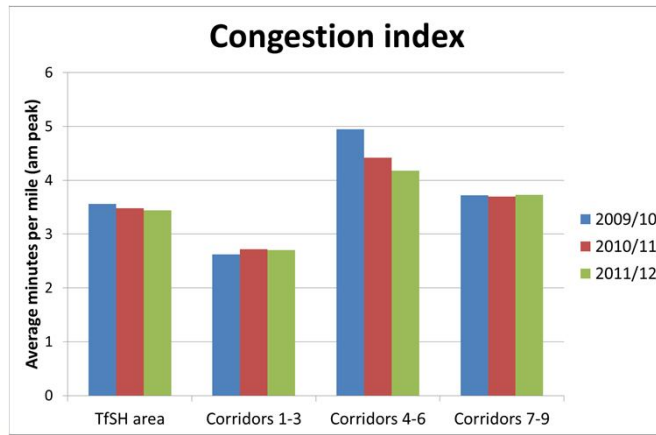
	2008	2009	2010	2011	2012
Corridors 1-3	29673	28722	28515	29330	29285
Corridors 4-6	17946	17995	17713	17671	17549
Corridors 7-9	30575	30811	30350	31241	31689



## Baseline results – examples

### Congestion index (average minutes per mile during the am peak 0800-0900)

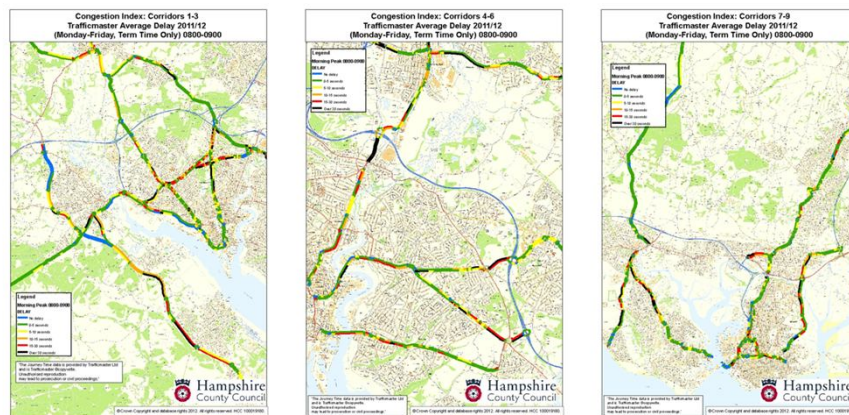
Data sources: HCC, PCC, SCC, Trafficmaster, DfT



## Baseline results – examples

### Network reliability (Congestion 'hotspot' locations in black)

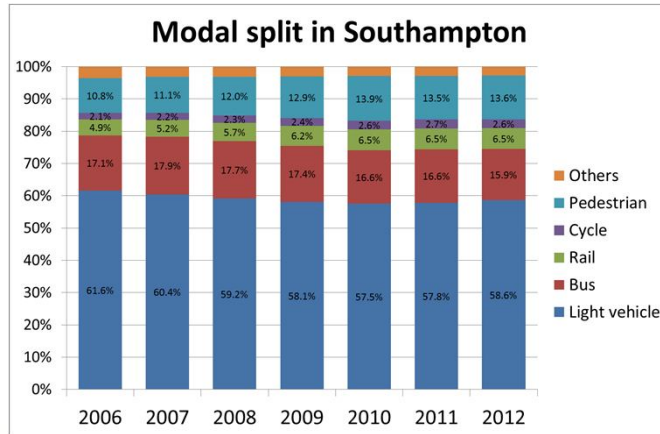
Data sources: HCC, PCC, SCC, Trafficmaster, DfT



## Baseline results – examples

### Modal split in Southampton

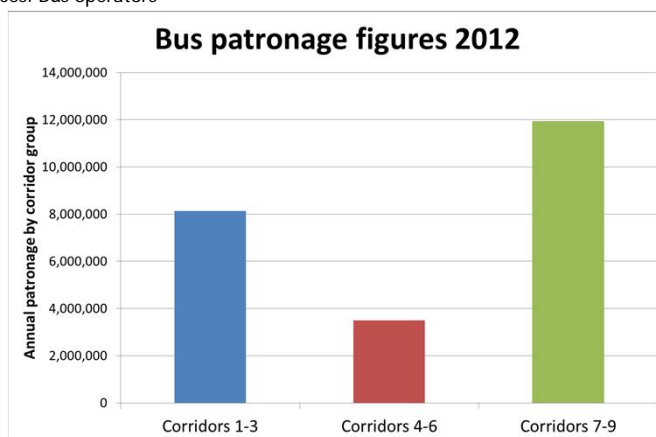
Data sources: SCC



## Baseline results – examples

### Bus patronage by corridor group 2012

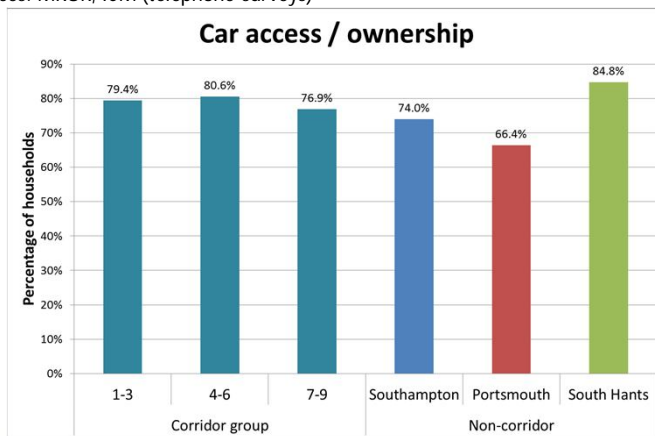
Data sources: Bus operators



## Baseline results – examples

### Percentage of households with access to at least one car or van

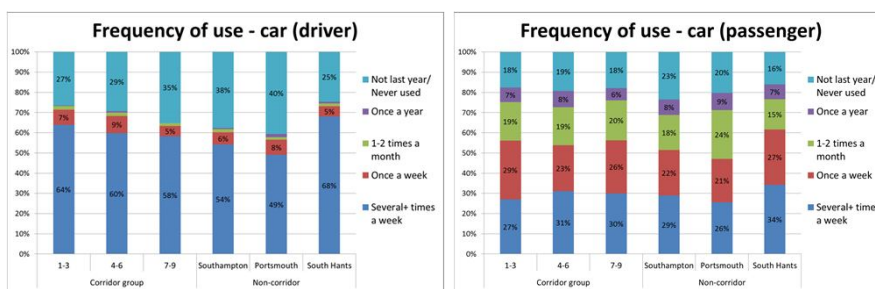
Data sources: MRUK, ICM (telephone surveys)



## Baseline results – examples

### Levels of car use

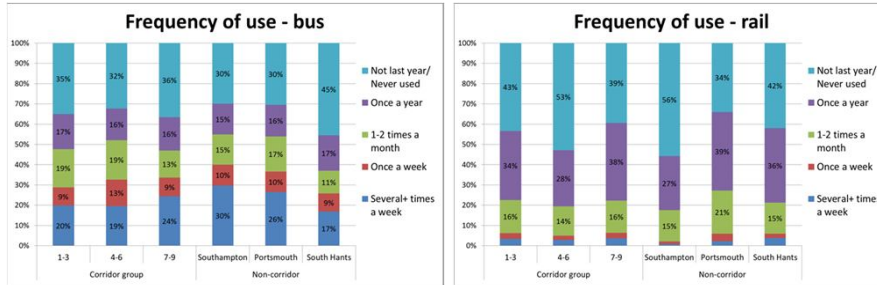
Data sources: MRUK, ICM (telephone surveys)



## Baseline results – examples

### Levels of public transport use

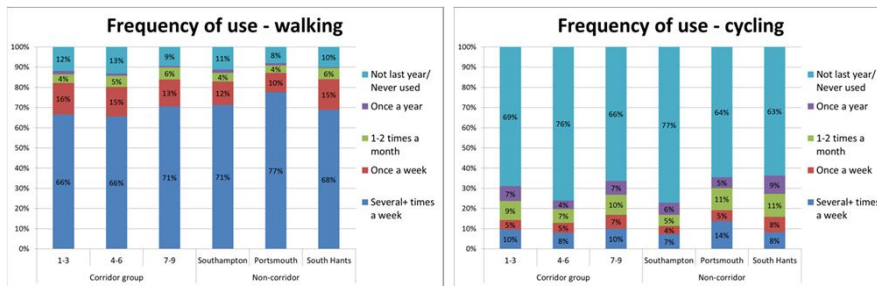
Data sources: MRUK, ICM (telephone surveys)

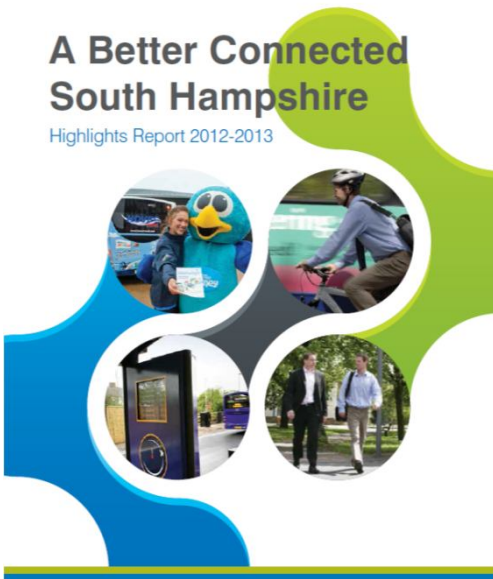


## Baseline results – examples



### Levels of active travel

Data sources: MRUK, ICM (telephone surveys)





**A Better Connected South Hampshire**  
Highlights Report 2012-2013

## 2012/13 Delivery

### What did we achieve?

## Infrastructure Improvements

- Improvements to Eclipse Bus Rapid Transit (BRT) route in Fareham and Gosport
- Real-time information screens in 200+ bus stops across Southampton and via a mobile app
- Bus priority at 40+ signalled junctions in Southampton
- Improvements to Fareham and Gosport bus stations including real time bus, train and ferry information and new bus shelters at Creek Rd (Gosport)
- New cycle lane between Cheltenham Rd and Racecourse Lane in Paulsgrove (Portsmouth)
- Controlled Toucan crossings at Eastern Road, Fitzherbert Road and Grove Rd in Farlington (Portsmouth)

## 'My Journey' Brand

my Journey HELPING HAMPSHIRE GET AROUND

facebook Like

twitter follow us

Home Get Around- Traffic and Travel Info Schools and Colleges Workplaces News

birds of a feather carshare together

Journey Planner

From: Enter Start Location

To: Enter Final Destination

Please select date

Leave Now Hour Min

advanced search options +

Search

Live Rail Departures

From: Please Select Station

Departing

National Rail Enquiries

Live Bus Departures

From: Search for a stop, SMS or street

advanced search options +

Search

Hampshire has never been so easy to get around.

Transport for South Hampshire and Isle of Wight

UNIVERSITY OF Southampton

my Journey HELPING HAMPSHIRE GET AROUND

## During 2012/13 we...

- Engaged with more than 1,600 employees through the Commuter Challenge. Over 8,150 less car trips were made during the month long event
- Delivered more than 16,000 personalised travel plans across the TfSHIoW area in more than 50 organisations
- Provided free travel for more than 500 job seekers, helping 43% of the scheme participants find employment

Transport for South Hampshire and Isle of Wight

UNIVERSITY OF Southampton

my Journey HELPING HAMPSHIRE GET AROUND

## We also...

- Engaged with more than 120 schools across the region, with more than 800 children receiving scooter or cycle training
- Reduced car trips to school, with 5% less children in Southampton coming to school by car and car sharing increasing by 1.5% in Hampshire
- Helped more than 40 vulnerable children travel to school independently working with SEN schools across Southampton

