


# Better Care Fund

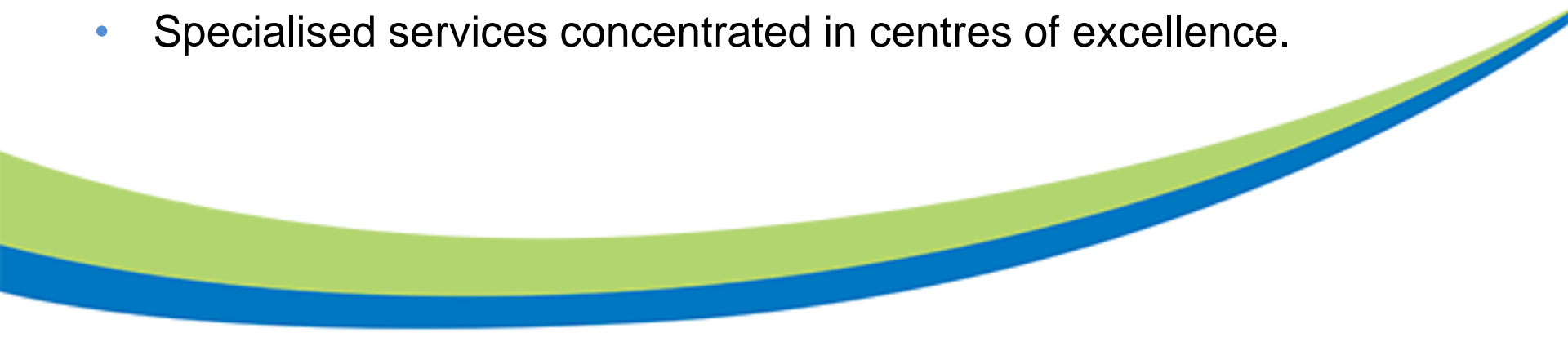
## Making Integrated Care Work For Local People

**Gill Duncan, Director of Adult Services**  
**Hugh Freeman, Clinical Chair, NCCG**




# Context

NHS England has identified that any high quality, sustainable health and care system in England will have the following six characteristics in five years:

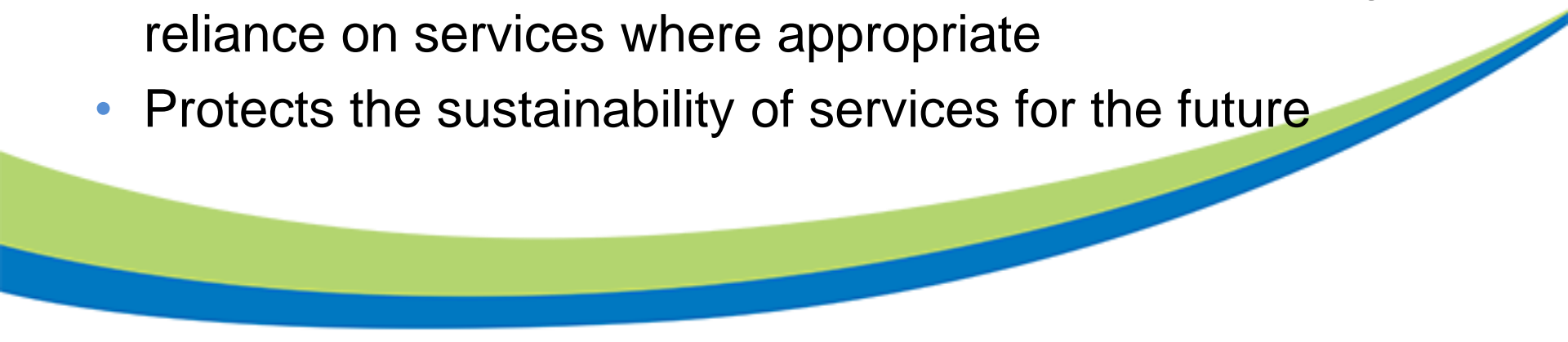
- A completely new approach to ensuring that citizens are fully included in all aspects of service design and change and that patients are fully empowered in their own care.
  - Wider primary care, provided at scale.
  - A modern model of integrated care.
  - Access to the highest quality urgent and emergency care.
  - A step-change in the productivity of elective care.
  - Specialised services concentrated in centres of excellence.
- 

# What is the Better Care Fund (BCF)?

- The £3.8bn Better Care Fund (formerly the Integration Transformation Fund) was announced by the Government in the June 2013 spending round to ensure a transformation in integrated health and social care
  - The Better Care Fund (BCF) is a single pooled budget to support health and social care services to work more closely together in local areas
  - It will be used to commission integrated health and social care services such as locally based Integrated Care Teams
- 

# What does the BCF aim to do ?

The BCF will help us to transform our health and social care system to one that:


- Maintains a constant focus on long term quality of care and the achievement of outcomes for patients and service users
  - Ensures that fairness and equality underpin every decision we make
  - Gives people choice and control over their outcomes
  - Increases self-sufficiency and independence reducing reliance on services where appropriate
  - Protects the sustainability of services for the future
- 




# What does this mean for local people?

<http://www.kingsfund.org.uk/audio-video/joined-care-sams-story>

## How will it work?

- The 5 CCGs and Hampshire County Council will pool a proportion of their funding
  - The pooled fund will be used locally to provide integrated health and social care services
  - Joint plans will be developed and agreed by the Hampshire Health and Wellbeing Board and approved by the CCGs and Hampshire County Council
  - Plans must satisfy national conditions
- 

# Delivering real changes

- 25% of the NHS funding will be held nationally and given to areas only when they meet the following performance indicators:
  - National indicators relate to:
    - Admissions to long term care in residential and nursing homes
    - Effectiveness of reablement outcomes
    - The level of delayed transfers of care
    - Avoidable emergency admissions
    - The quality of people's experience
  - Local indicators relating to:
    - Reablement, recovery and rehabilitation
    - Increased personalisation of health and social care
    - Decreasing pressures within adult social care
- 

# What benefits will we see?

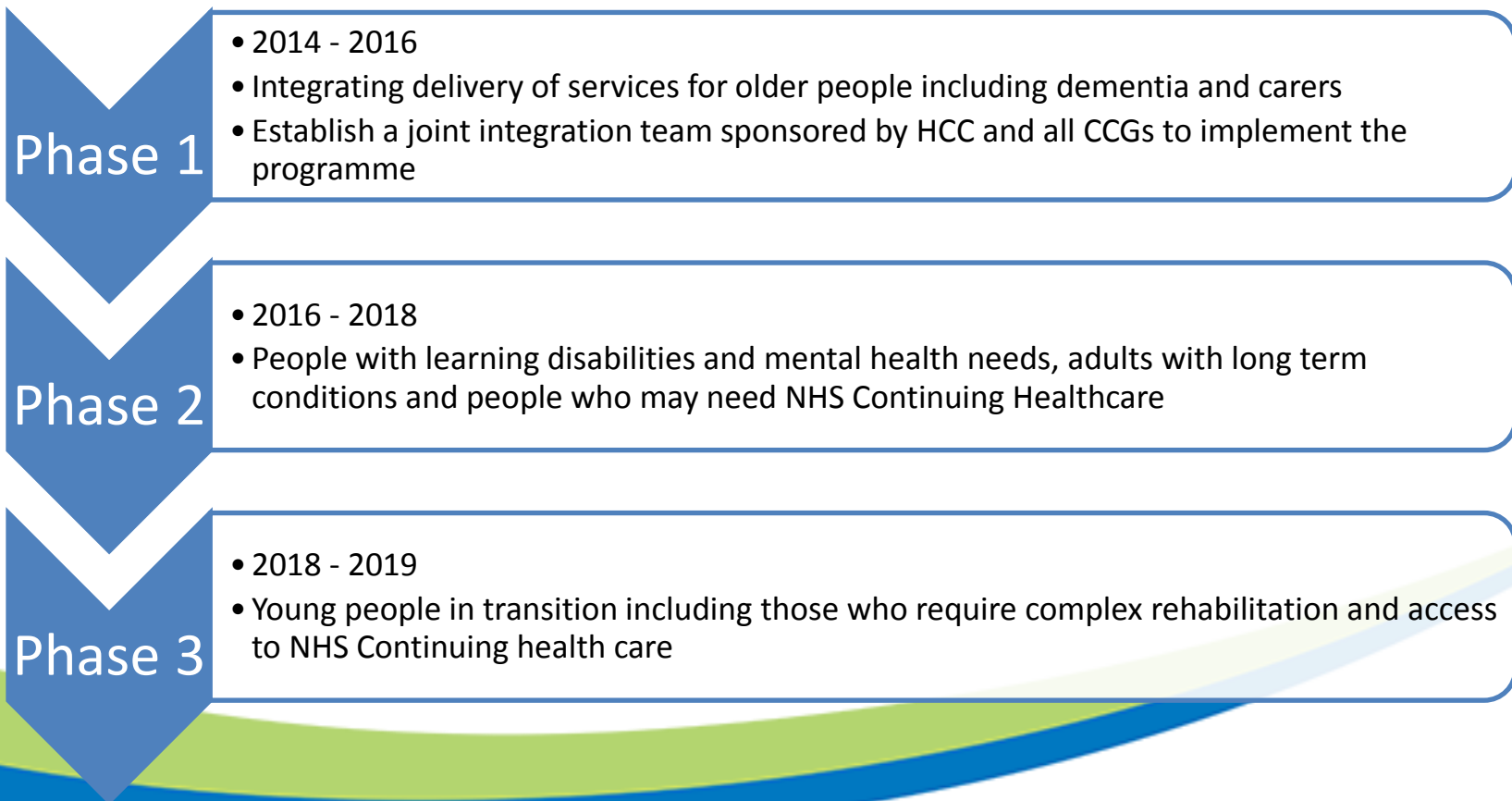
Aim	Program Objectives
<p><b>Provide the right care in the right place at the right time</b></p>	<p>To increase the proportion of people benefitting from evidence based prevention and early intervention</p> <p>To increase the proportion of people with complex and long-term health and social care needs receiving planned and coordinated care in, or close to home</p> <p>To ensure people have their health and care needs met seamlessly in the most appropriate setting</p>
<p><b>Maximise health, wellbeing and quality of life</b></p>	<p>To improve the health related quality of life and wellbeing of people with long-term conditions</p> <p>To maintain or improve independence and recovery for people with long-term health and care needs</p> <p>To reduce the difference between those with the best and worst health</p>
<p><b>Place the person at the centre of care</b></p>	<p>To empower key population groups to maximise their capabilities and to manage their health and wellbeing</p> <p>To increase the proportion of people with health and social care needs that have choice and control of their care</p> <p>To improve satisfaction with health and social care services</p>

# How much is the BCF in Hampshire?

Organisation	Amount
Hampshire County Council	£7,942,000
NHS Fareham and Gosport CCG	£10,876,000
NHS South Eastern Hampshire CCG	£11,617,000
NHS North East Hampshire and Farnham CCG	£9,086,000
NHS North Hampshire CCG	£11,391,000
NHS West Hampshire CCG	£29,845,000
<b>TOTAL</b>	<b>£80,757,000</b>


# How quickly will it happen?

Plans for the BCF implementation are being developed in key phases:




# What impact will the BCF have on hospitals across Hampshire?

Putting the right integrated services in place will mean we will need to change the capacity as there will be:

- A different range of services available in the community
  - Not all the people who currently need to go to hospital for care will need to be admitted
  - A shorter length of stay for those aged over 65 years
  - Only patients with a higher or more complex medical need will need to go to hospital and some specialised services will be concentrated in centres of excellence
  - Community in reach to ensure smooth transfers of care
- 

# Who will be responsible for overseeing the implementation?

- The principles in the draft plan have been signed off by each CCG prior to being presented to the Health and Well Being Board in February 2014
  - NHS England will rate and aggregate all plans against criteria agreed with government departments and the Local Government Association.
  - A revised final Better Care Plan will be submitted to NHS England by 4 April 2014.
  - The Hampshire Health and Well Being Board will oversee implementation
- 

# We are already delivering the approach – hear what people say

<http://www.northhampshireccg.com/info.aspx?p=9>



# RECOMMENDATION

## **The Board is requested to:**

Note the progress to date to develop the draft plan

Agree the draft plan for submission by 14 February 2014

