



Hampshire  
County Council

# Children and Families Advisory Panel Briefing



Hampshire  
County Council

[www.hants.gov.uk](http://www.hants.gov.uk)

- Overview
- Early Help
- Child Protection and Children in Need
- Children in Care
- Youth Offending
- Special Educational Needs
- Children with Disability

**Contacts c36,000 via hantsdirect  
plus c30,000 police cyp forms**

**Referrals c15,000 via hantsdirect  
+ police CYPs**

**Initial assessments 8655**

**Core Assessments 5584**

**S.47 Assessments 2480**

**New child protection plans 992**

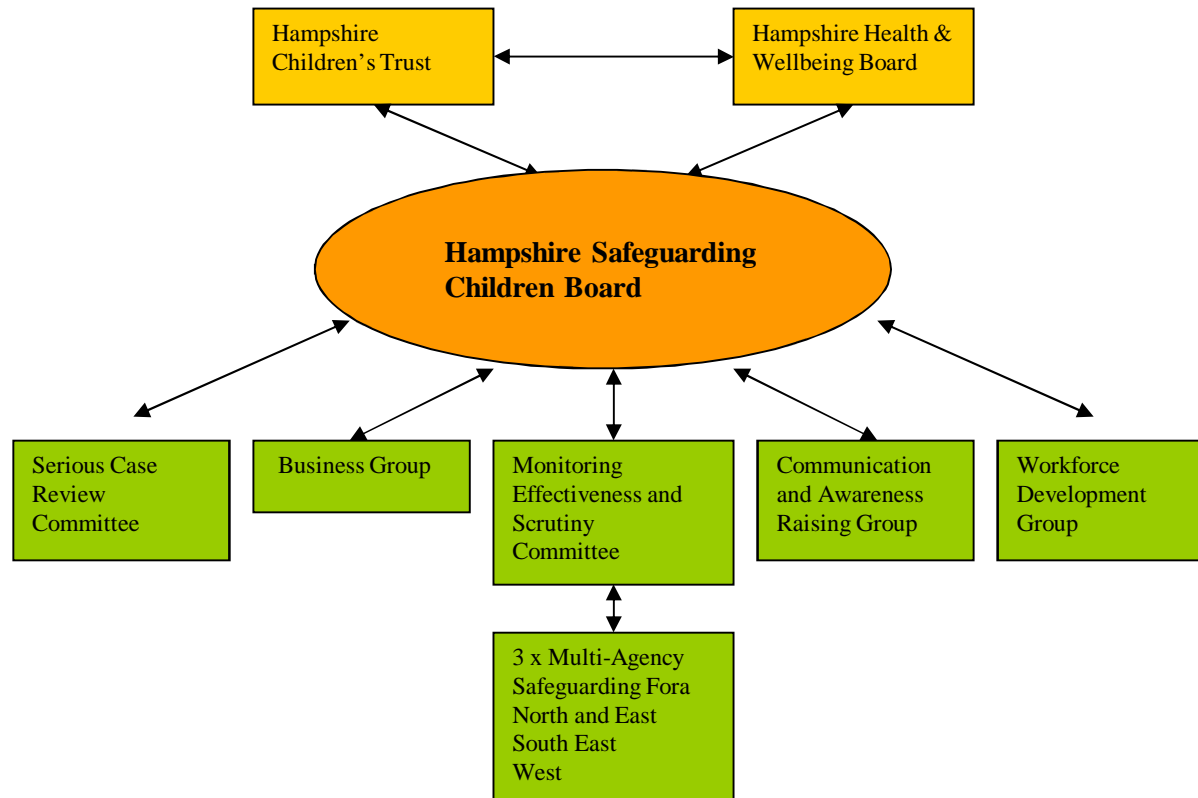
**(Issue Proceedings c130)**

**New children in care c400**



## Board structure

The main Board is supported by a range of sub-groups that enable its functioning. The structure of the board is illustrated below.



## Activity data

| Table 1 contextual information  | Mar 2008                     | Mar 2009                     | Mar 2010                     | Mar 2011                     | Mar 2012           | Mar 2013           |
|---|------------------------------|------------------------------|------------------------------|------------------------------|--------------------|--------------------|
| <b>Open social work cases (a)</b>   | <b>4447</b>                  | <b>5857</b>                  | <b>5949</b>                  | <b>6572</b>                  | <b>6999</b>        | <b>6822</b>        |
| <b>Contacts in month with reason listed as child / young persons concern</b> (the figure in brackets denotes the number of children to whom the contacts relate) <b>(b)</b> | <b>1964</b><br><b>(1582)</b> | <b>2809</b><br><b>(2567)</b> | <b>2890</b><br><b>(2616)</b> | <b>2912</b><br><b>(2694)</b> | <b>2815 (2331)</b> | <b>3069 (2497)</b> |
| <b>Children with Child Protection Plan (c)</b>  | <b>465</b>                   | <b>631</b>                   | <b>638</b>                   | <b>726</b>                   | <b>797</b>         | <b>942</b>         |
| <b>Children in care (full time) (d)</b>   | <b>1016</b>                  | <b>1085</b>                  | <b>1104</b>                  | <b>1082</b>                  | <b>1103</b>        | <b>1121</b>        |



| Table 2 National Indicators   | 2008/09 <sup>1</sup> | 2009/10 <sup>1</sup> | 2010/11 <sup>1</sup> | 2011/12 <sup>1</sup> | 2012/13 <sup>2</sup> |
|---|----------------------|----------------------|----------------------|----------------------|----------------------|
| <b>NI 59: Percentage of initial assessments for children's social care carried out within ten working days of referral. (Safeguarding definition adopted for 2010/11)</b> | n/a                  | n/a                  | 66.0%                | 65.4%                | 67.7%                |
| <b>NI 60: Percentage of core assessments for children's social care that were carried out within 35 working days of their commencement</b>                                | 82.8%                | 80.2%                | 76.8%                | 72.3%                | 73.0%                |
| <b>NI 64: Child protection plans lasting two years or more</b>  | 4.6%                 | 7.1%                 | 9.9%                 | 5.6%                 | 4.6%                 |
| <b>NI 65: Percentage of children becoming the subject of a child protection plan for a second or subsequent time (LAA target)</b>   | 16.8%                | 11.2%                | 11.3%                | 12.8%                | 13.0%                |
| <b>NI 67: Percentage of child protection cases which were reviewed within required timescales</b>   | 99.6%                | 95.6%                | 97.9%                | 94.5%                | 92.3%                |



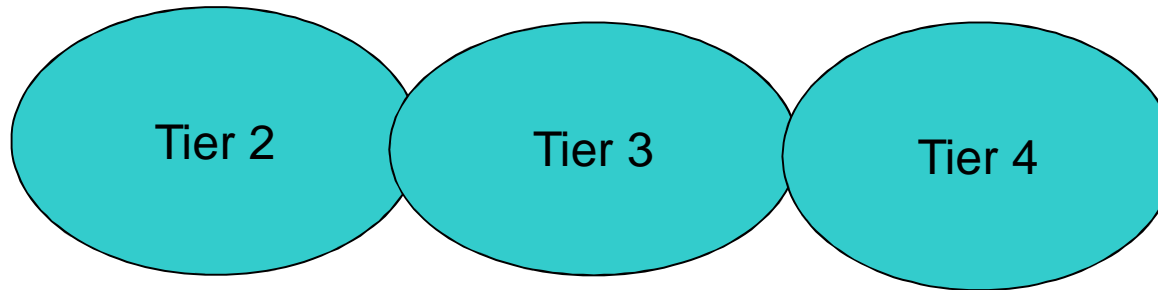
# What is 'Early Help'

- 'Help for families at the earliest point at which problems arise'
- Generally before the children's social care threshold.
- Delivered via a range of partnerships – locality partnerships, troubled families, community safety and more.
- Currently under review

# Early Help

- Tiers/Thresholds
- Locality Team Review
- Early Help and Partnership Managers

# Joined up Early Help Strategy



Schools YSS  
Commissioning  
Children's  
Services

Locality  
Team  
Plus

Social Care

# Youth Work (YSS)

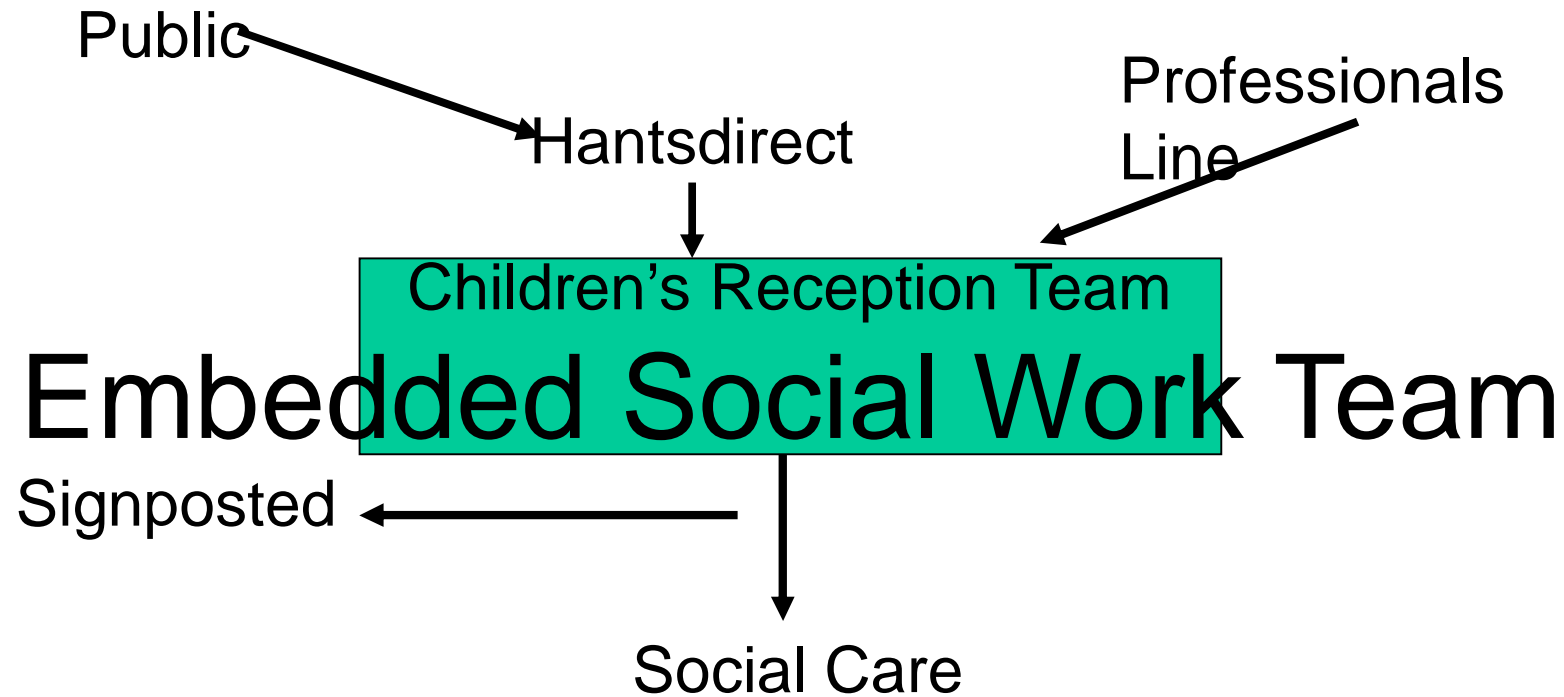
- Commissioned out to Voluntary Sector (Tier2)
- Work with Schools to be Post 14 Team
- Targeted Work
- Personal Adviser Role/Care Leavers
- Not in Education, Employment or Training (NEET)/Suitable Accommodation.

# 'Front Door' Services for Children in Need and Child Protection

# Referral & Assessment

- In coming contacts to children's social care come via Hantsdirect (contact centre) and the Children's Reception Team (CRT).
- CRT is an embedded social work team within Hantsdirect.
- CRT collect information from callers/collate case history and either signpost to a relevant service or progress the referral to children's social care for an assessment / intervention.
- CRT use Hampshire Children's Services threshold for statutory interventions document to help determine whether a case is progressed to children's social care, or signposted

# Referral Pathway to Children's Social Care



# Assessment and Intervention

- Referrals from CRT received by 7 Referral & Assessment (R&A) teams.
- R&A undertake Initial Assessments (short summary assessments) and Core Assessments (detailed assessments for more complex situations).
- Assessment aims to identify unmet needs and determine how those needs can be best met.
- Shortly moving to a Single Assessment which provides a less prescriptive and more flexible assessment, tailored to the needs of the child/family situation.
- Single Assessment has 15 and 45 day timescales to prevent drift.

# Assessment & Intervention

- If the assessment identifies that the child has needs or risks that will become unacceptable without intervention, social work services are provided.
- This level of statutory intervention falls under s17 Children Act 1989. The child is identified as being a Child in Need (CiN)
- This places a duty on Children's Services to provide support and interventions to reduce the needs and risks for the child.
- The child has an allocated social worker.
- The intervention will continue as long as the child has unmet needs.

# Child Protection

- If the needs and risks increase or the child has suffered or is likely to suffer significant harm, a Child Protection Investigation must be carried out. This duty arises from s47 Children Act 1989.
- Children's Services notify the police and agree whether a joint or single agency investigation will be undertaken.
- Partner agencies (such as Health) are contacted to obtain as much information as possible.
- Child is seen as soon as possible (always within 24 hours) and (where appropriate) spoken to alone.
- Child maybe formally 'joint interviewed' by a trained social worker and police officer.



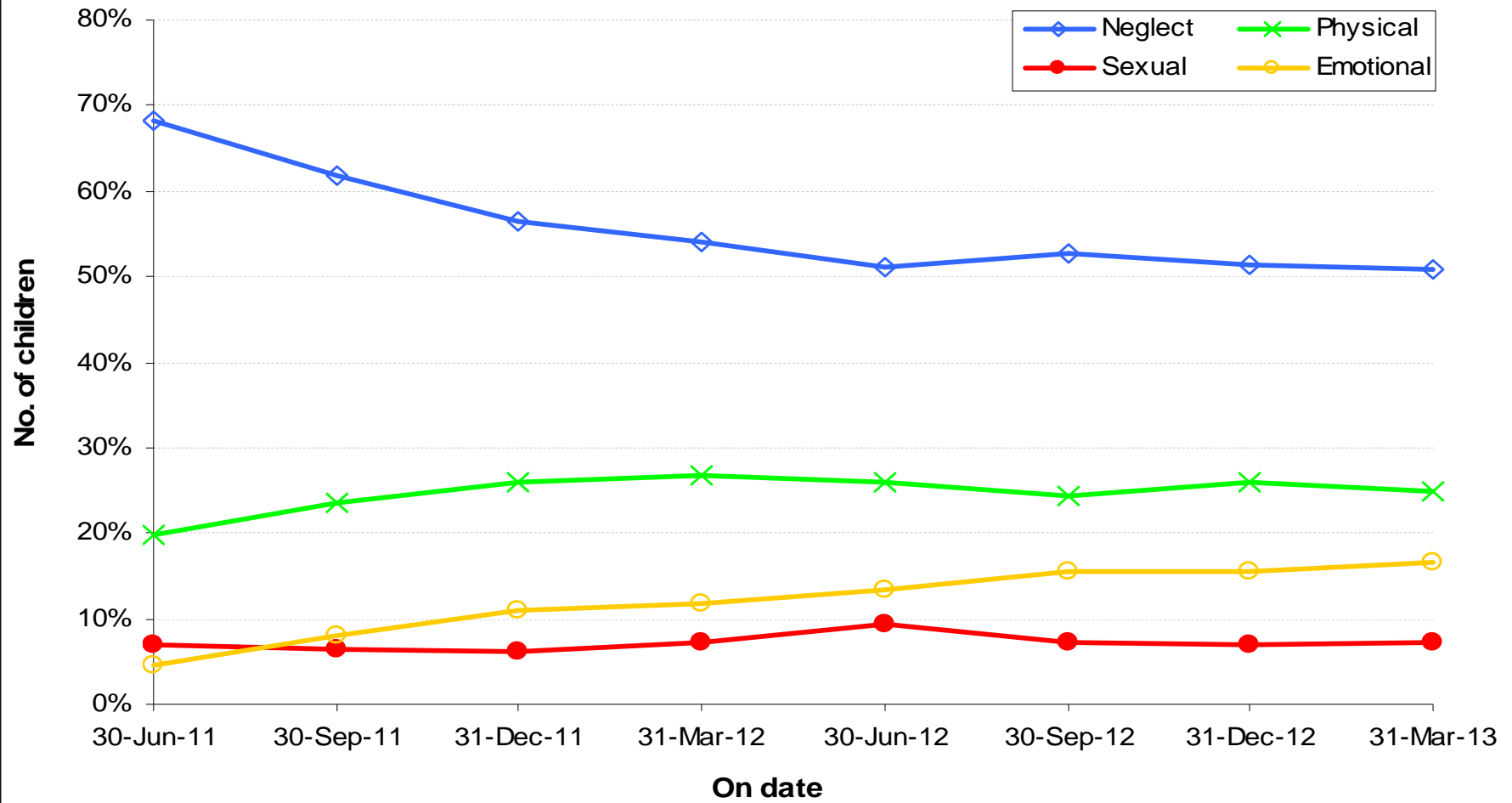
# Child Protection

- Following the investigation a decision is made by Children's Services as to whether a Child Protection Conference should be convened.
- The conference involves all key family members and involved professionals. Information and risks to the child are shared.
- A decision is then made as to whether a Child Protection Plan is required to keep the child safe.
- 4 categories of risk that can lead to a plan – neglect, physical abuse, sexual abuse, emotional abuse.
- If a Child Protection Plan is required, a core team of professionals will work with the child, led by a social worker

# Child Protection

- The Child Protection plan is reviewed initially at three months and at similar regular intervals thereafter until the risks are reduced to acceptable levels.
- At the end of May 2013 there were approximately 900 children subject to Child Protection Plans in Hampshire.
- Each child is visited by their social worker every 10 working days as part of keeping the child safe.

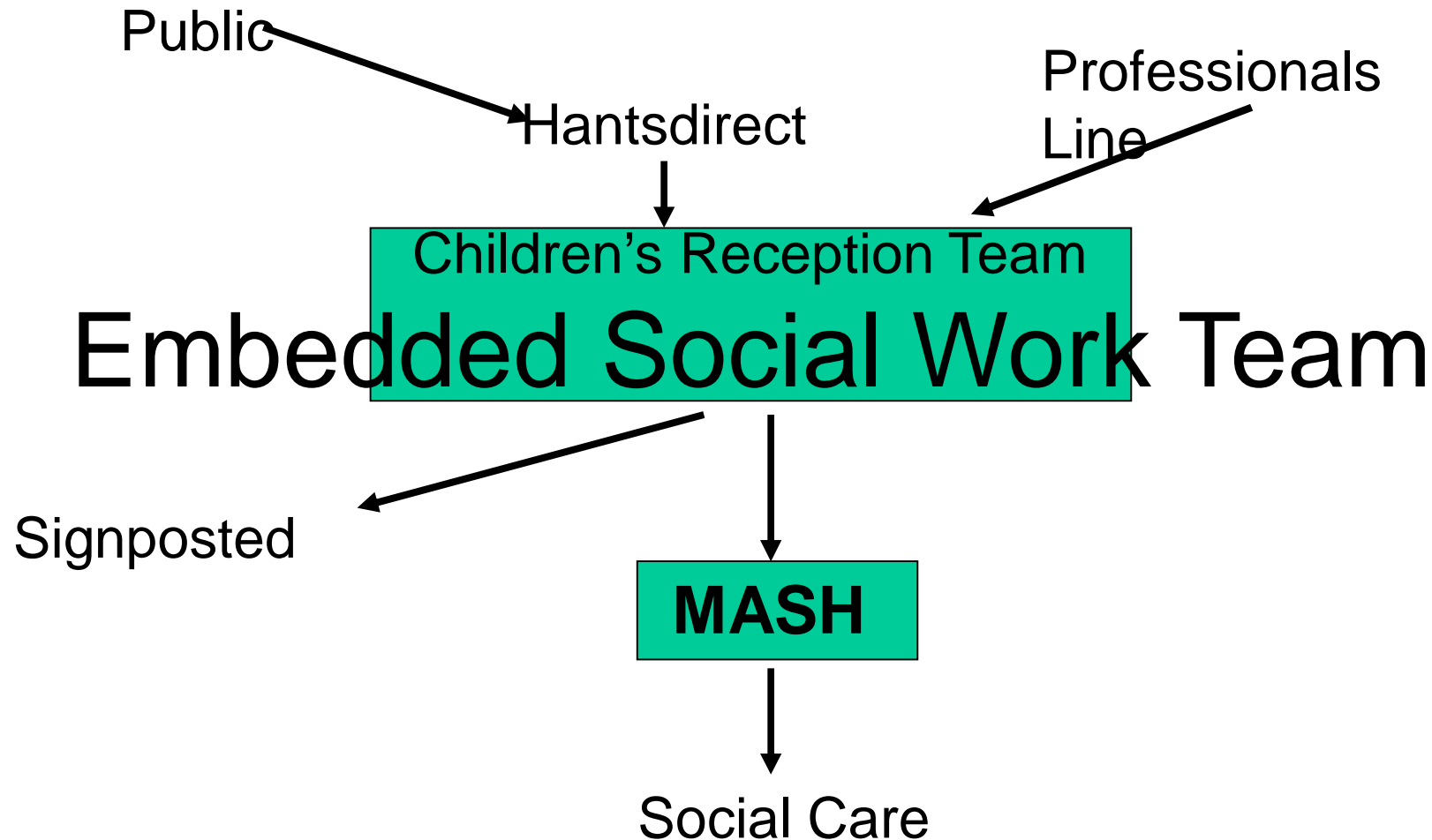
### Current CP Plans : by Category



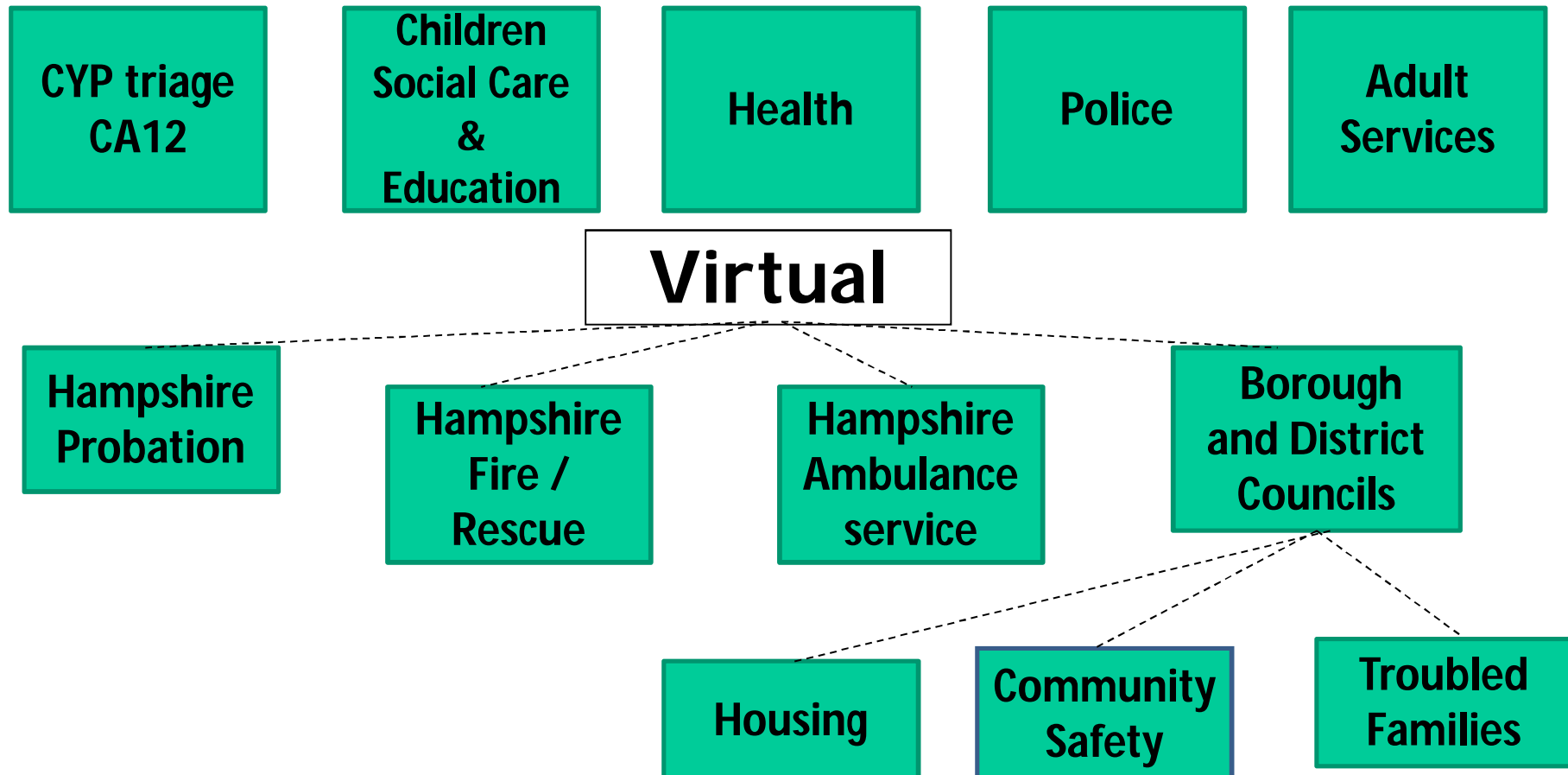
# Hampshire Multi Agency Safeguarding Hub (MASH)

- To enhance the early identification of children who are 'Children in Need' or require protecting, Children's Services are developing a Multi Agency Safeguarding Hub (MASH).
- The MASH will be a dedicated multi agency team to protect the most vulnerable children and adults from harm, neglect and abuse.
- Key co-located partners will be Children's Services (inclusive of education), Police, Health and Adult Services. The teams will be based in Hantsdirect alongside CRT
- Intelligence is shared by all agencies at the point of referral to ensure the right response is given to the child/family at the right time.

# Referral Pathway to Children's Social Care



# MASH

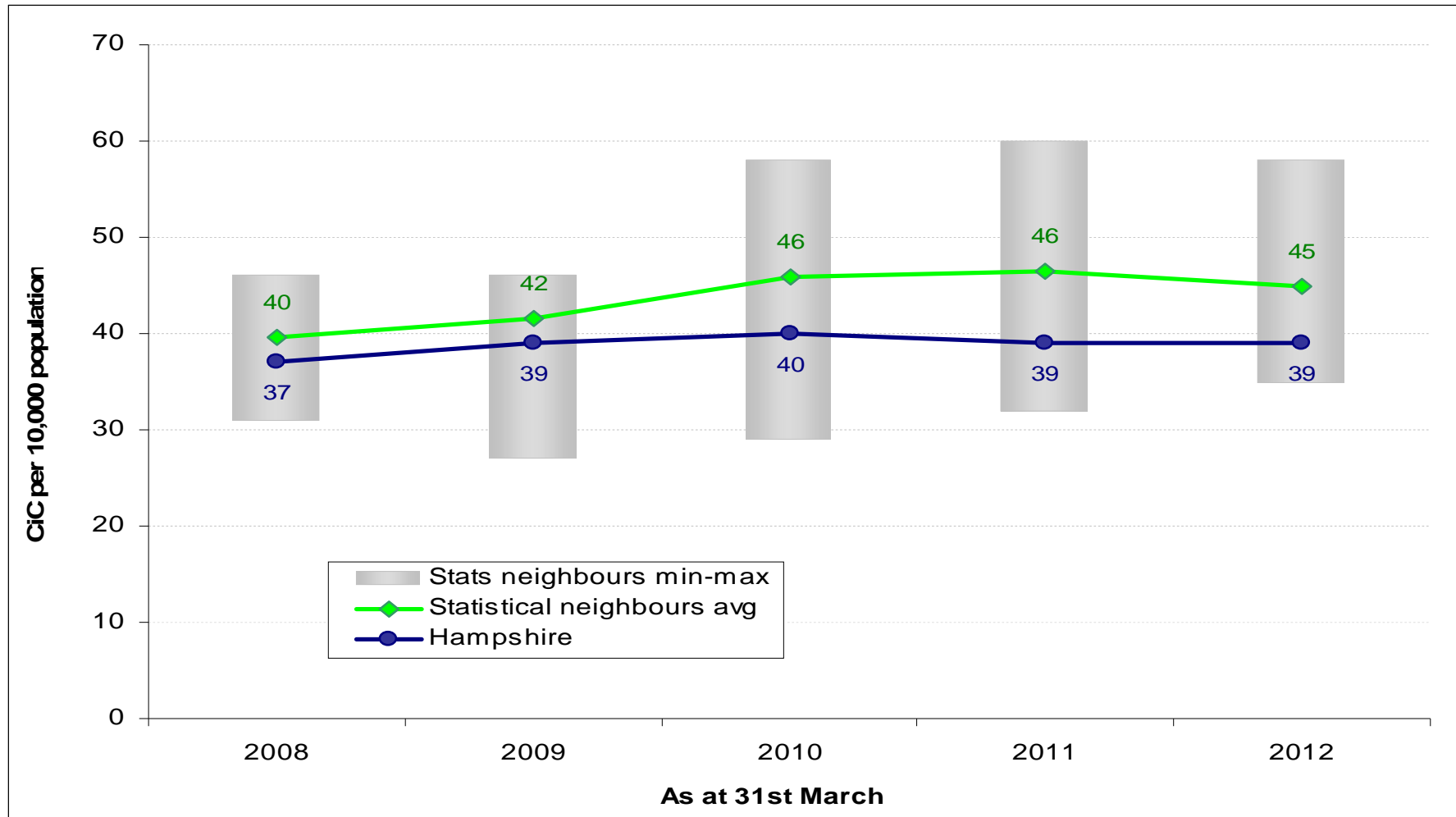


# Children in Care

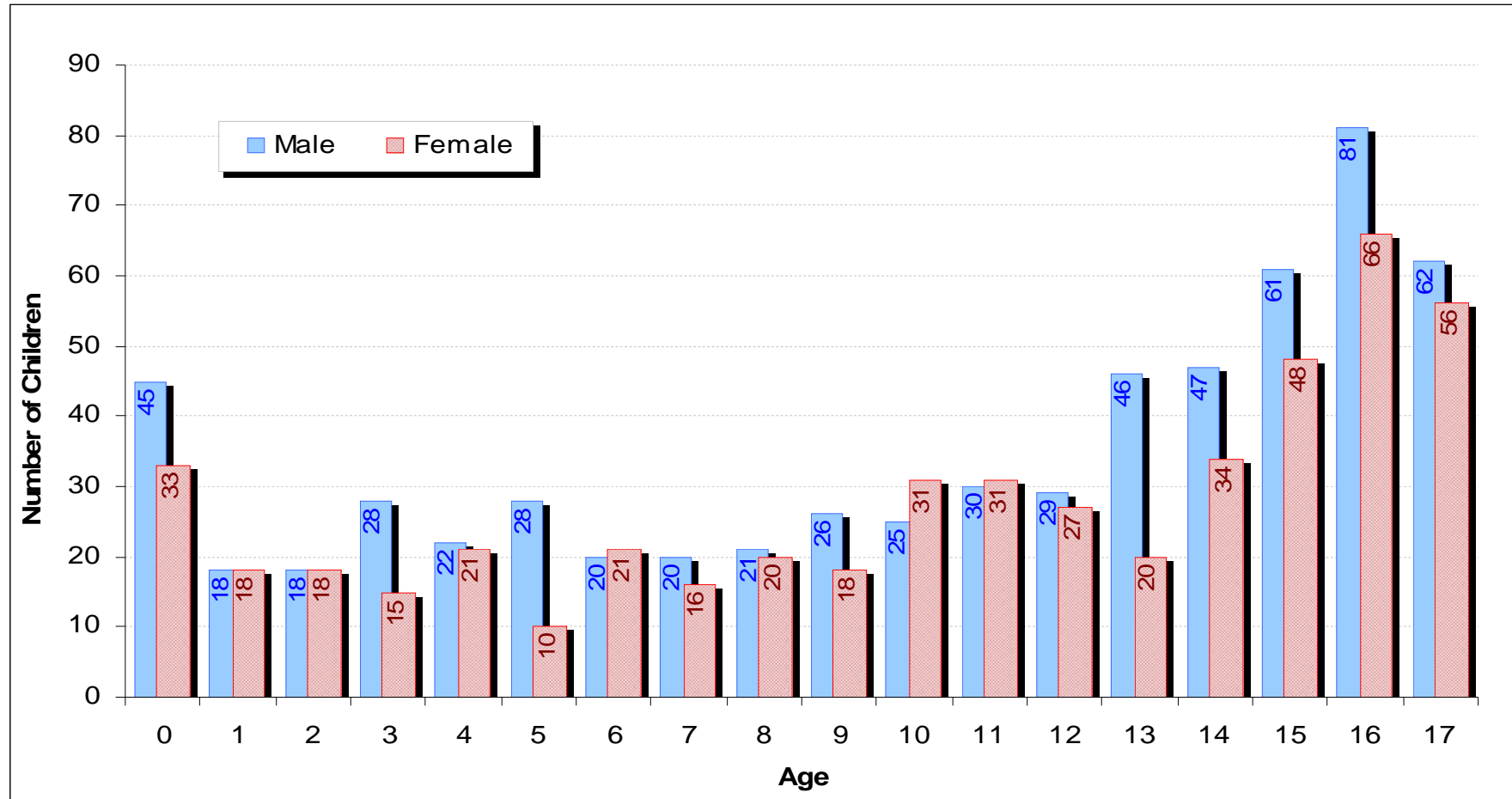
# Children in Care Trends as at 31 March 2013

- 1130 CLA (39 per 10k)
- 627 Boys
- 503 Girls
- Increased Older Age Range

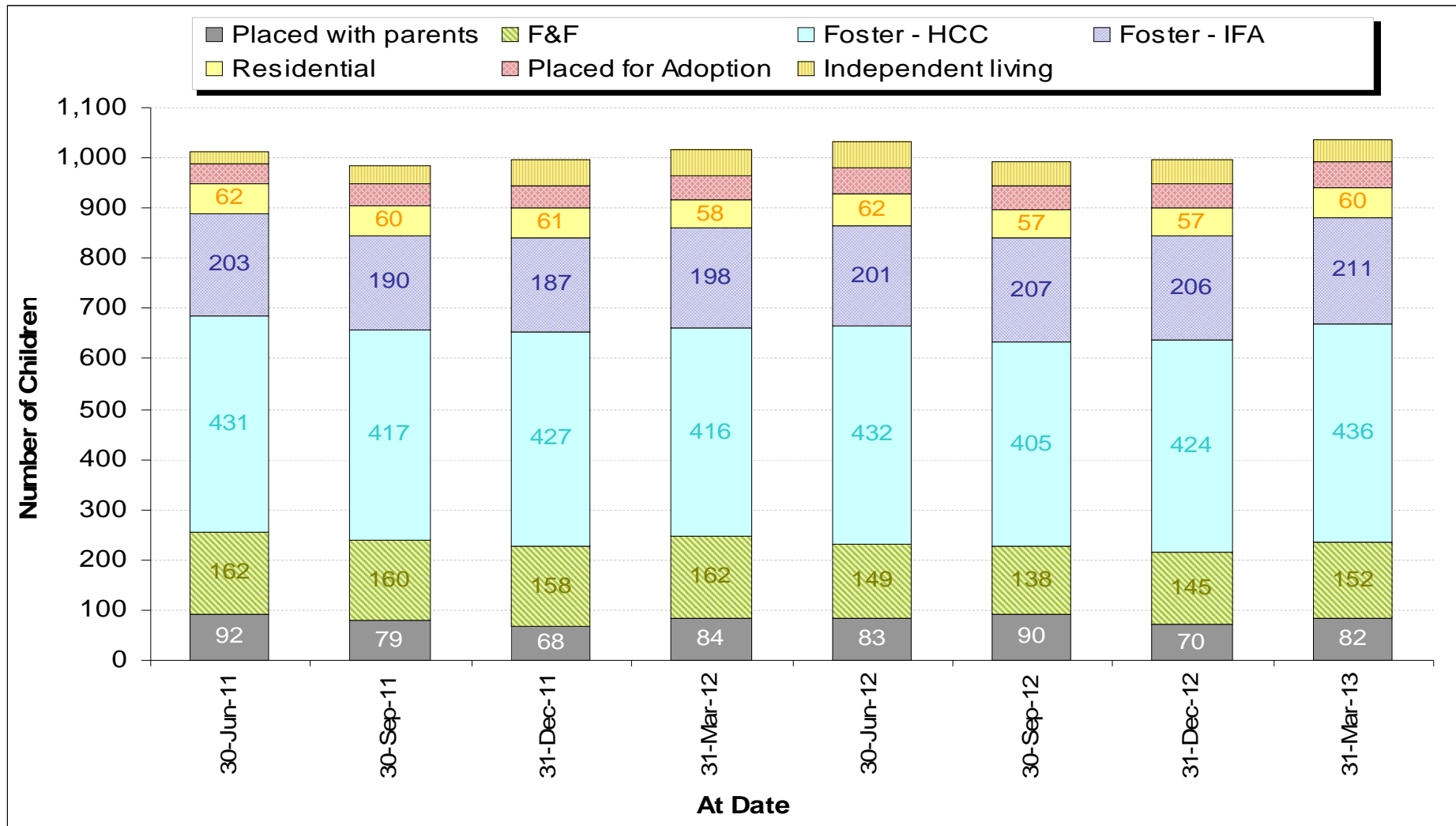
### Children in care rate per 10,000 for Hampshire v statistical neighbours



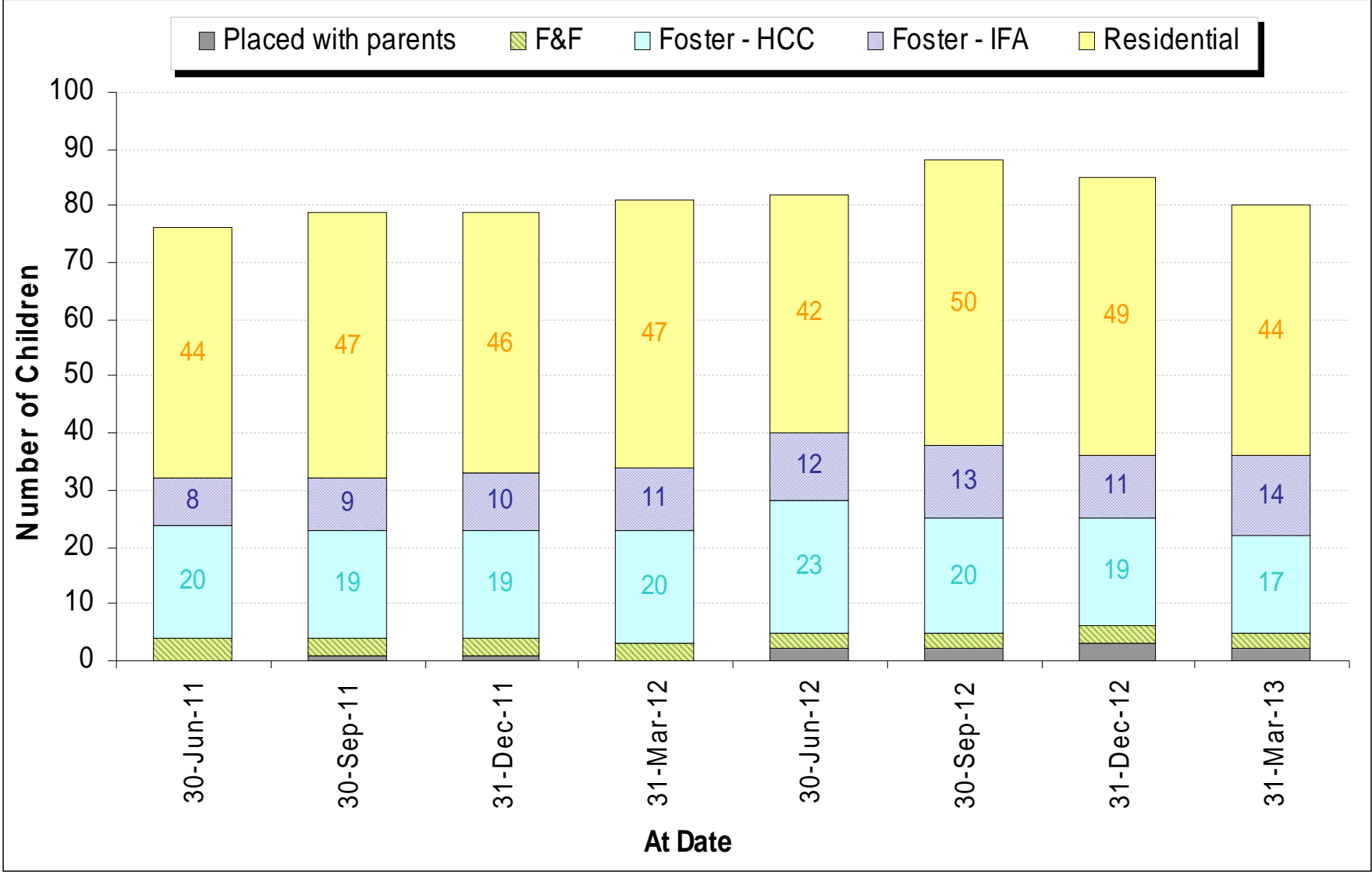
## Children in Care by age and gender



# Type of placement (non-disabled children)



# Type of placement disabled children



# Children in Care Key Issues

- Population Stabilised
- Post 16 Trends
- Education – ‘Narrow the Gap’ Work
- Placement Stability
- Front Door Prevention

# Placement of Children Looked After

- Types of placements
- Fostering:
  - County carers and friends and family
  - Long-term, short breaks, support foster care
- Residential children's homes – 6 children's homes and a secure unit
- Adoption – Government agenda 'Tackling Delay'

# Recruitment and support to Foster Carers and Adopters

- Constant recruitment campaign to recruiting to meet needs of the children – one size does not fit all
- Retention of foster carers through training, support and participation
- Adoption Support Needs Assessment

# Residential

- Investment in the residential estate
- Smaller homes – more homes
- Closer to school and families
- Pillars of Parenting – Quality of care across the homes

# Key issues for placement of children and young people

- Shortfall of foster carers and adopters to meet need
- Use of independent Fostering Agencies and non-County children's homes
- Placement stability
- Challenges around placements for young people aged 15+

# Hampshire Youth Offending Team

Alison Smailes

Head of Hampshire YOT

# What is a Youth Offending Team?

- 1998 Crime and Disorder Act
- Multi agency (staff and funding):
- Local Authority (children's services)
- Police
- Probation
- Health
- Plus a grant from the Youth Justice Board

# What is the aim of the YOT?

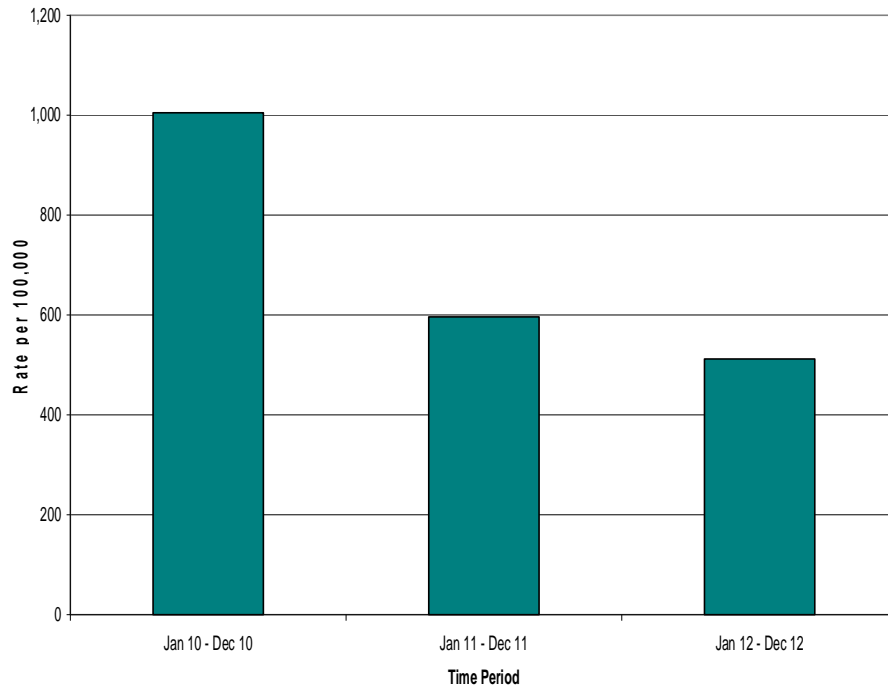
The primary aim of the youth justice system is to **prevent** offending by children and young people (Crime and Disorder Act 1998)

# Key targets of the YOT

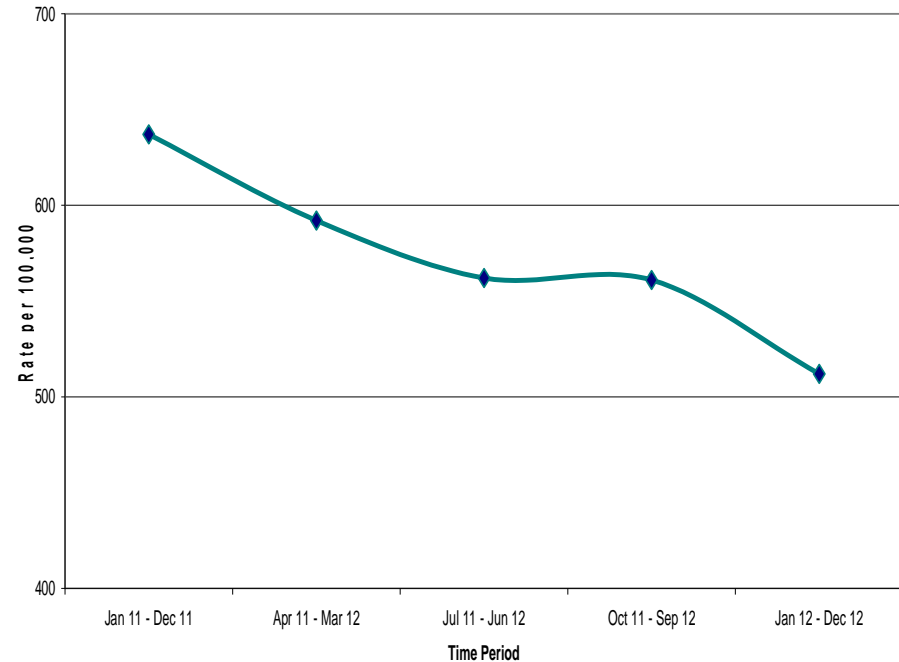
1. Reducing the number of first time entrants into the criminal justice system
2. Reducing reoffending
3. Reducing the number of children and young people in custody

# How is Hampshire YOT doing: first time entrants

FTE Rate per 100,000 10 to 17 Population Past 3 Years

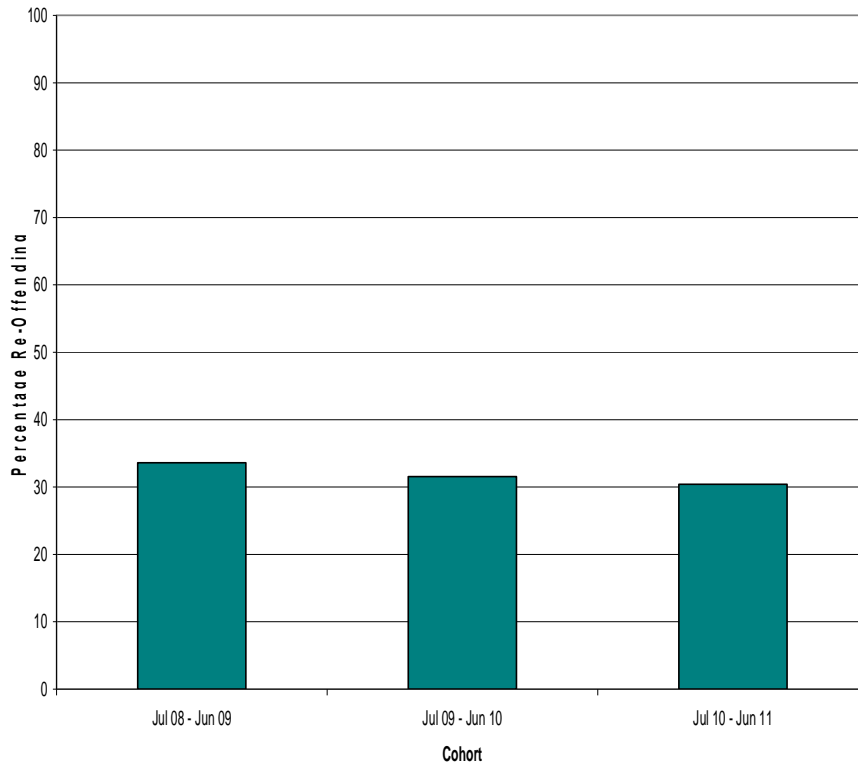


FTE Rate per 100,000 10 - 17 Population  
Last Five 12 month Rolling Cohorts

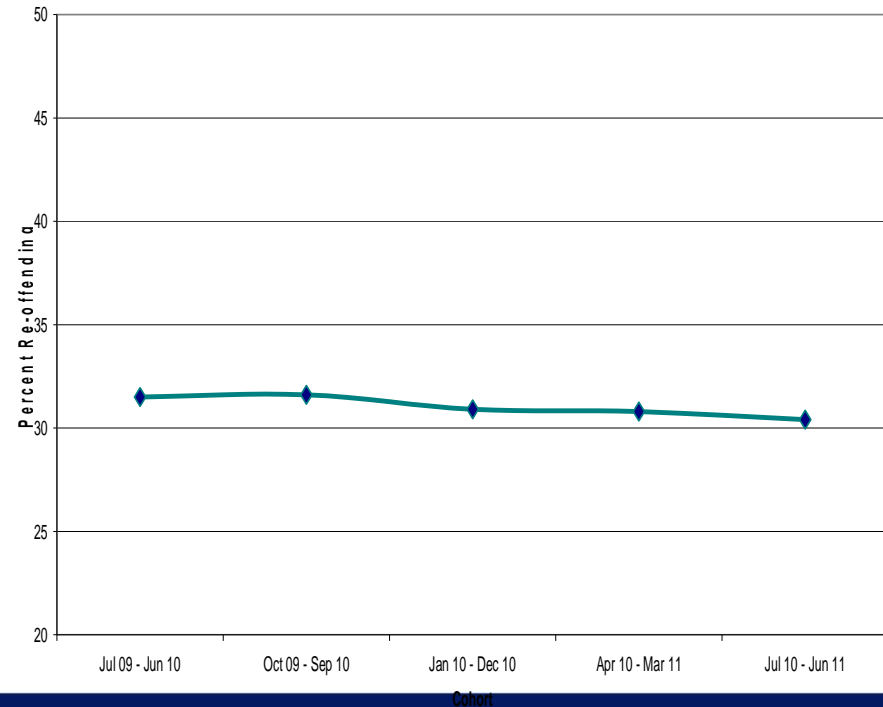


# How is Hampshire YOT doing: reducing reoffending

Percent Re-offending Last 3 Years

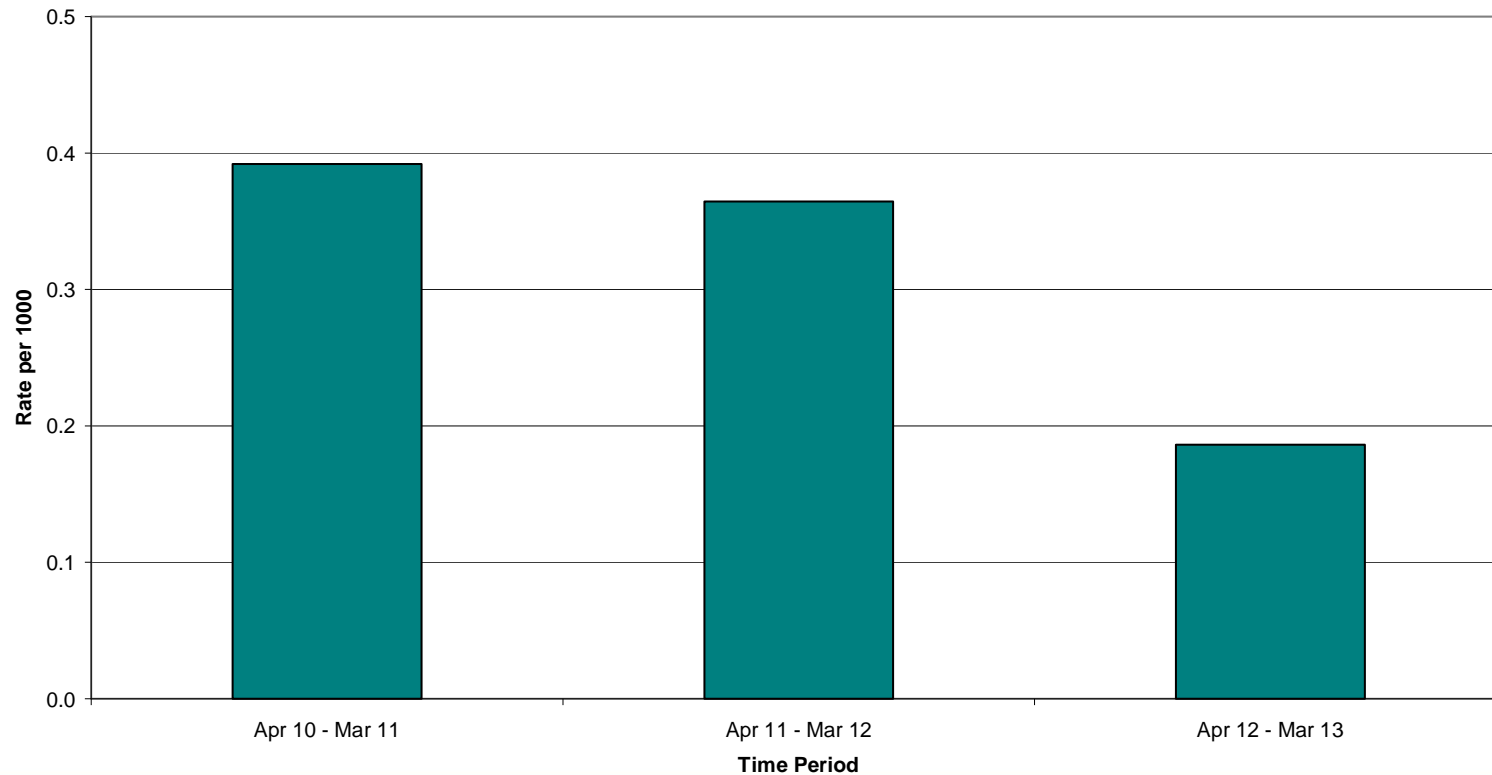


Percent Re-offending  
Last Five 12 Month Rolling Cohorts



# How is Hampshire YOT doing: reducing custody

Custody Rate per 1000 10 - 17 Population Last 3 Years



# **Special Educational Needs**

**Christine Jones  
Education Officer,  
Special Educational  
Needs**

# **Special Educational Needs (SEN) - definition**

Children have SEN if they have a learning difficulty which calls for special educational provision to be made for them.

**Education Act 1996. Section 312**

# Learning difficulty - definition

Children have a learning difficulty if they:

- have a significantly greater difficulty in learning than the majority of children of the same age
- have a disability which prevents or hinders them from making use of educational facilities of a kind generally provided for children of the same age in schools within the area of the Local Authority (LA)
- are under compulsory school age and fall within the definitions above or would do if special educational provision was not made for them.

Education Act 1996. Section 312

# SEN

- For the majority of children and young people (CYP) with SEN additional support is provided in education setting which ensures they receive the necessary help.
- For a very small number of children (2 - 3% of the total school population nationally) more help may be needed and a statutory assessment suggested

This is only required for those who have the most significant and long term SEN which need very detailed assessment and involvement from a range of specialist services.

- Assessment may lead to a statement of SEN being produced by the local authority and this sets out the provision to meet those needs and the appropriate education placement.



- Statements apply from 0 to age19.
  - January 2013 there were 4825 pupils with statements in Hampshire representing 2.85% of the total school population.
  - In calendar year 2012 Hampshire issued 523 new statements.
- CYP with statements of SEN a variety of settings in Hampshire;
  - pre schools, mainstream schools (496)
  - resourced provision in mainstream schools (54)
  - maintained special schools (26)
  - independent and non-maintained schools (65 across the country).
- Due to the number of neighbouring authorities a number of CYP attend education providers in other local authority areas.

# Statutory Duties and Responsibilities

- Hampshire Local Authority responsible for a wide range of statutory duties for CYP with SEN
  - setting policy and strategy
  - commissioning and ensuring sufficiency of provision for CYP with SEN across the full spectrum of provision
  - ensuring effective procedures for allocating resources to schools, colleges other providers and individuals
  - identifying and assessing CYP's needs through the statutory assessment process,
  - issuing and maintaining statements of SEN, and ensuring the monitoring, development and quality assurance of SEN provision.

# SEN Resources 12/13

- £25.7m delegated to mainstream schools for SEN, including pupils with statements
- £37.9m for special schools
- £6.7m retained centrally for top up to statements
- £7.0m for resourced provision
- £10.8m for out county placements
- £15 m for SEN transport

- Major revision of SEN legislation proposed in The Green Paper: Support and aspirations (March 2011).
- Children and Families Bill introduced in February 2013 and progressing through Parliament.
- Planned implementation in September 2014.

- Hampshire part of South East 7 (SE7)
- SE7 is now one of nine Champion Pathfinders
- Pathfinders set up to test out proposals and trial approaches to inform shape of emerging Legislation
- New statutory protections for young people aged 16-25 in further education and a stronger focus on preparing for adulthood
- Academies, free schools, further education and sixth form colleges to have the same SEN duties as maintained schools.
- Education, Health and Care Assessment process and Plan (0 to 25 age groups) – bringing together education and care provision, and involving children, young people and their families

- Development of a clear, transparent, ‘Local Offer’ of all services and support available to children and young people aged 0 – 25 years with SEN or disabilities including education, health, social care and leisure services, so parents and young people can understand what is available.
- Opportunities for a personal budget for parents and young people with an Education Health and Care (EHC) Plan – extending choice and control over their support.
- New requirement for Local Authorities, Health and care services to commission services jointly.
- New legal duty on Health Commissioners to deliver the health elements of EHC Plans.

# Children with Disabilities Service

# Purpose

- To undertake a comprehensive assessment of the child and their family where more specialist and targeted support is required.
- To protect and safeguard children and young people with disabilities from abuse and neglect.
- To ensure those disabled children and young people in the care of the local authority are looked after properly, safely and supported to develop into adulthood.

# Purpose 2

- To provide a range of specialist services such as care support in the home and/or overnight short breaks away from home.
- To provide a range of short break services to children and young people with a disability. (Short breaks are fun or educational activities for children and young people with disabilities and additional needs - allowing their parents or carers to take a 'short break' from caring.)

# Structure

- 4 Disabled Children's Teams in Hampshire
- 1 Short Breaks Team
- 3 Residential Short Break Units
- 5 Independent or voluntary sector Residential Short Break Units
- 27 Care agencies provide care in the home
- Over 200 short break providers across the county

# Activity

- HCC provides a range of short break services which are accessed by approximately 5000 children and young people. Most of these services are provided by voluntary organisations funded by grants awarded by the council.
- Currently just under 900 disabled children and young people with an allocated social worker in Hampshire.
- 105 disabled children and young people in the care of Hampshire County Council.
- 23 children and young people with a disability who are subject to Child Protection Plans in Hampshire.

# Priorities

- The service works closely with SEN staff and is heavily involved in the Special Educational Needs and Disabilities (SEND) Pathfinder
- Working more closely and integrating with health colleagues
- Delivering higher quality, value for money services to children and their families