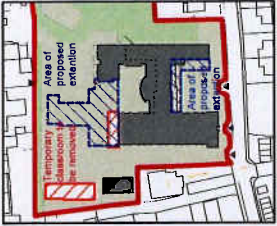




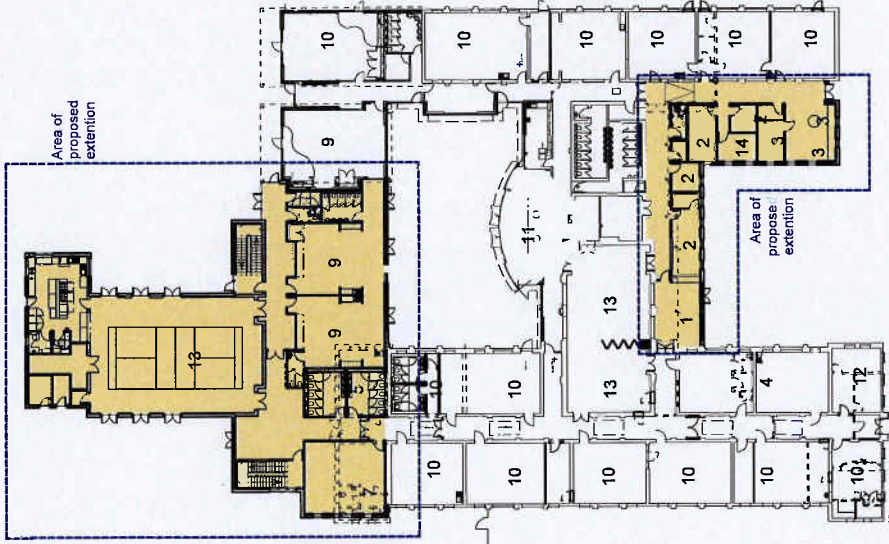
Existing Site Location Plan 1:5000



Proposed Demolition/New Build Areas 1:2500



Proposed Site Plan TBC with RPS 1:1000

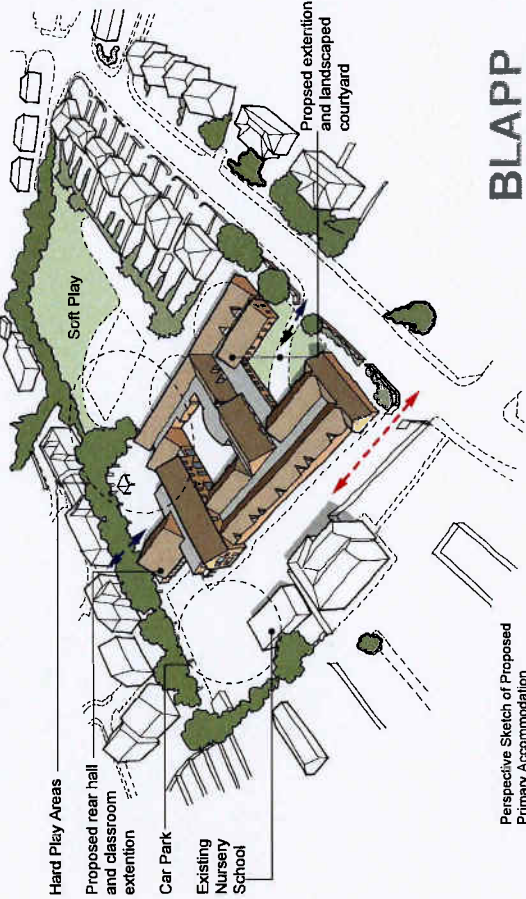


Proposed Ground Floor Plan 1:500

- 1. Reception & Waiting
- 2. General Office
- 3. Head Teacher
- 4. Staff Room
- 5. WCs
- 6. Kitchen & Servery
- 7. Plant & Non-teaching Stores
- 8. Hall
- 9. Classrooms - Reception
- 10. Classrooms - Key Stage 1&2
- 11. Learning Resource / Library
- 12. Specialist Practical
- 13. Studio/ Small Hall/ Music & Drama
- 14. Small Group Room (SEN)
- 15. ICT Suite
- 16. Car Park
- 17. Games Court
- 18. Hard Play
- 19. Soft Play
- 20. Habitat
- 21. Pitch

Non-Teaching Teaching External

- Pedestrian Access
- Vehicular Access
- Proposed Area of Extension
- Proposed Areas of Demolitions



Perspective Sketch of Proposed Primary Accommodation

BLAPP

HCC
Hampshire
County Council
HCC Property Services,
The Mill House, High Street,
78 High Street, Winchester SO23 8UL
Tel: (01962) 847801

1 The drawing is Copyright Hampshire County Council © 2012. All rights reserved. Reproduction permitted. All rights reserved.
2 no dimensions are to be scaled from this drawing
3 This map is reproduced from Ordnance Survey material with the permission of Ordnance Survey on behalf of the Controller of Her Majesty's Stationery Office © Crown Copyright. Unauthorised reproduction infringes Crown Copyright and may lead to criminal proceedings.
(100019180), (2012)

rev	description	date	by
P1	BLAPP	15/04/13	RG

PROJECT	Hampshire County Council Crescent Primary School Proposed 1 FE Expansion
SCALE	As Shown @ A3
DATE	Feb 2013
DRAWN	ARCNCI
CHKD	
DRAWING NO.	P09738 - A221
FILE REF.	

SHEET CONTENTS	Project Appraisal
Property Services	
REVISION	
P1	