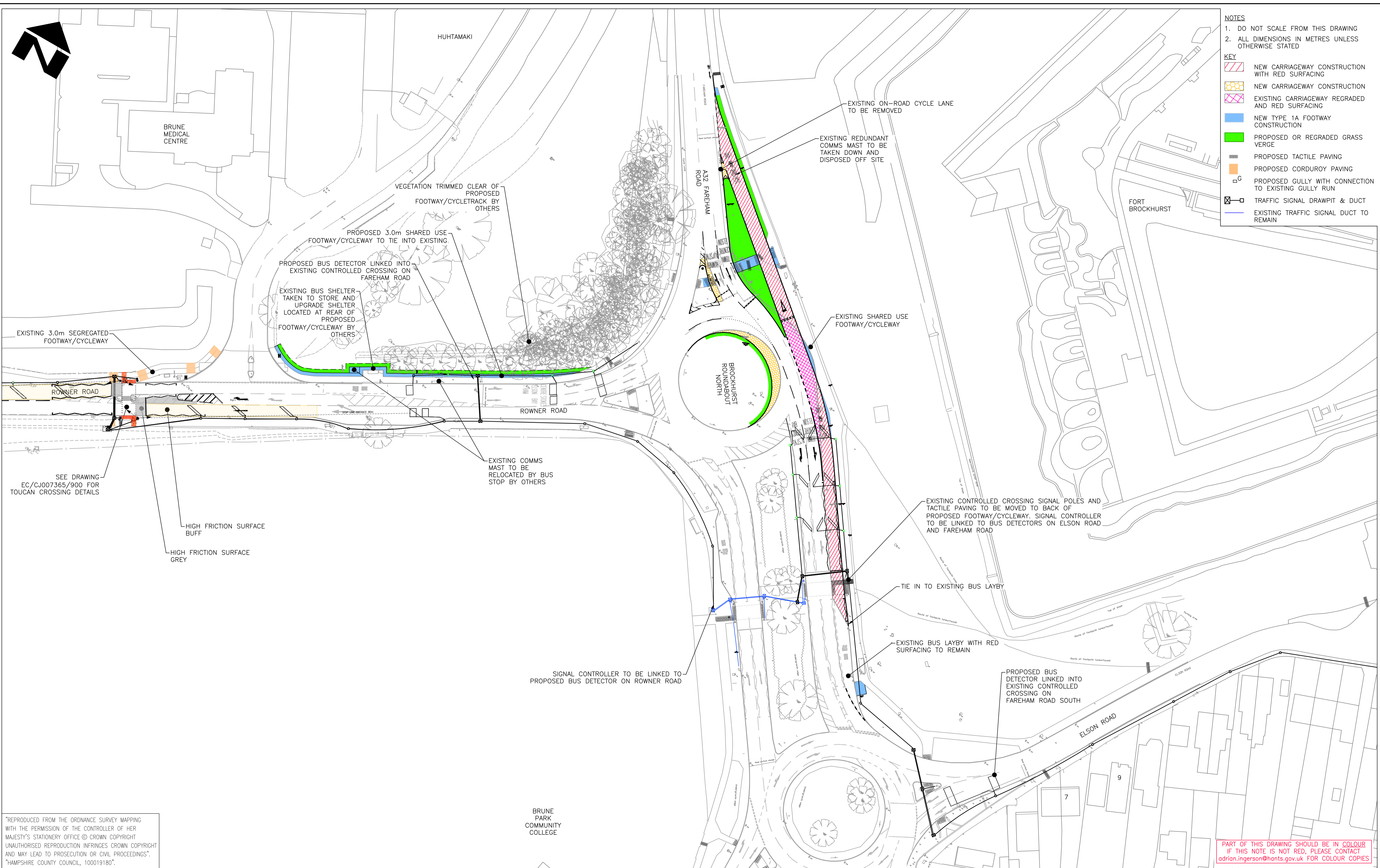


- NOTES**
- DO NOT SCALE FROM THIS DRAWING
  - ALL DIMENSIONS IN METRES UNLESS OTHERWISE STATED
- KEY**
- NEW CARRIAGEWAY CONSTRUCTION WITH RED SURFACING
  - NEW CARRIAGEWAY CONSTRUCTION
  - EXISTING CARRIAGEWAY REGRADED AND RED SURFACING
  - NEW TYPE 1A FOOTWAY CONSTRUCTION
  - PROPOSED OR REGRADED GRASS VERGE
  - PROPOSED TACTILE PAVING
  - PROPOSED CORDUROU PAVING
  - PROPOSED GULLY WITH CONNECTION TO EXISTING GULLY RUN
  - TRAFFIC SIGNAL DRAWPIIT & DUCT
  - EXISTING TRAFFIC SIGNAL DUCT TO REMAIN



"REPRODUCED FROM THE ORDNANCE SURVEY MAPPING WITH THE PERMISSION OF THE CONTROLLER OF HER MAJESTY'S STATIONERY OFFICE © CROWN COPYRIGHT UNAUTHORISED REPRODUCTION INFRINGES CROWN COPYRIGHT AND MAY LEAD TO PROSECUTION OR CIVIL PROCEEDINGS". "HAMPSHIRE COUNTY COUNCIL, 100019180".

PART OF THIS DRAWING SHOULD BE IN COLOUR IF THIS NOTE IS NOT RED, PLEASE CONTACT [adrian.ingerson@hants.gov.uk](mailto:adrian.ingerson@hants.gov.uk) FOR COLOUR COPIES

REV.	AMENDMENT	DATE	DRAWN	CHKD	APPD
B	MINOR AMENDMENTS	15.11.12	AI	RW	LW
A	MINOR AMENDMENTS	17.10.12	AI	RW	LW

CLIENT  
**HAMPSHIRE COUNTY COUNCIL**  
 ECONOMY, TRANSPORT AND ENVIRONMENT DEPARTMENT  
 STRATEGIC TRANSPORT

CONSULTANT  
**Hampshire County Council**  
 STUART JARVIS BSc DipTP FCIHT MRTP: DIRECTOR OF ECONOMY, TRANSPORT & ENVIRONMENT

DRAWN	SCHEME	DRAWING TITLE
RW CAD CLT	BBAF BROCKHURST ROUNDABOUTS AND CROSSWAYS BUS PRIORITY	GENERAL ARRANGEMENT
CHECKED RW RW	JOB No. C.J007365.01	HCC CADplot: 15.Nov.2012 at 12:13pm
APPROVED LW LW	SCALE @ A1 1:500	DATE AUG.2012
	SHEET No. 1 OF 1	DRG No. EC/CJ007365/1/400

REV	REV
B	B

hcc: \\c:\k\Eng\Roads\Schemes\Cad\Drawings\Contract Drawings\Section 1 Brockhurst\RA\EC-CJ007365-1-400 - General Arrangement.dwg