



# **The Multi-Agency Operational Development of PLACES of SAFETY in Hampshire**

November 2012 - HOSC

# Introduction

- Police Powers under the MHA 1983
- The role of the Place of Safety in Hampshire
- Challenges
- Opportunities
- Questions

# Police Powers

- S136 Mental Health Act
- Someone who appears to be suffering from mental disorder
- In need of immediate need of care or control
- Removal to Place of Safety for further Assessment

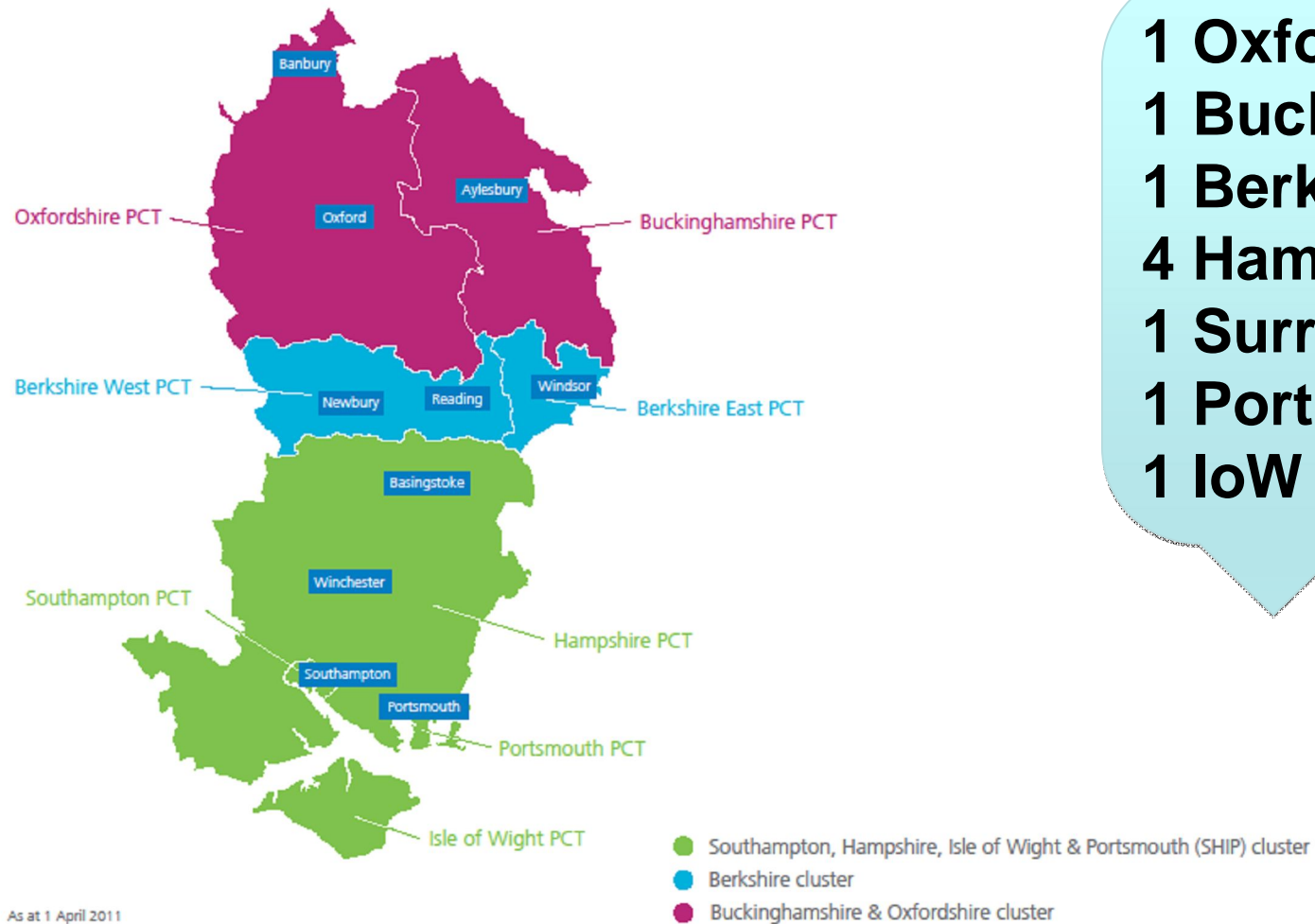
# Assessment

- Use of s136 Police Powers lead to implementation of a Mental Health Act Assessment involving Medical and Social Care Professionals
- Persons can be held for upto 72 hours in Place of Safety or until completion of assessment

# Main Agencies/ Hampshire

- Hampshire Police Constabulary
- Southern Health NHS Foundation Trust (SHFT)
- Surrey and Borders NHS Foundation Trust (SABFT)
- Hampshire Adult Services (HAS)
- South Central Ambulance Service (SCAS).

## LOCATION of Hospital Place of Safety Suites



**1 Oxfordshire**  
**1 Bucks**  
**1 Berkshire**  
**4 Hampshire**  
**1 Surrey**  
**1 Portsmouth**  
**1 IoW**

# Hospital Places of Safety

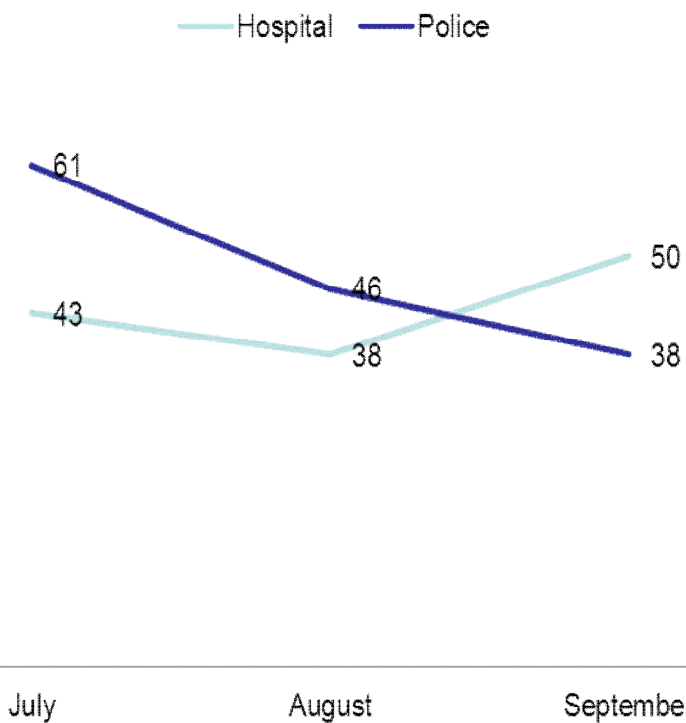
- Parklands (SHFT), Basingstoke
- Melbury (SHFT), Winchester
- Elmleigh (SHFT), Havant
- Antelope (SHFT), Southampton (although providing a service for residents of HCC by exception)
- The Ridgewood Centre (SABFT) Frimley

# Challenges

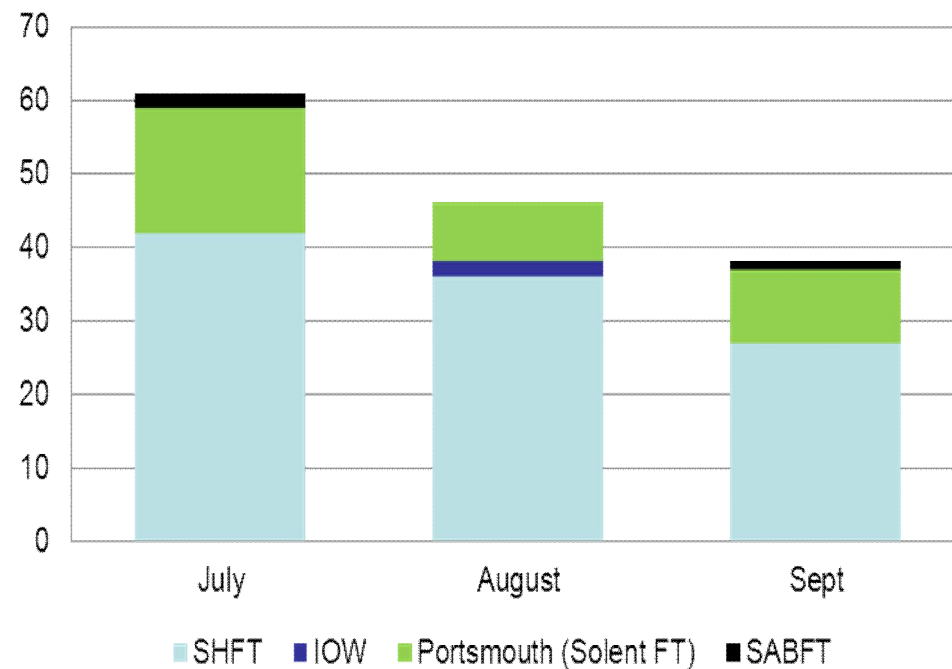
- The appropriateness of the detention and the availability of suitable alternatives to officers
- The availability of the hospital POS
- The availability of doctors and AMHPs to attend in a timely manner to assess the individual at all times of the day.
- The lengths of time an individual is having to wait at a POS whilst waiting for assessment or care arrangements to be put in place (Children, Working Age Adults, Older Adults)
- Out of Hours Provision

## Place of Safety Suites Usage Hampshire -

### Total Number of S136 detentions

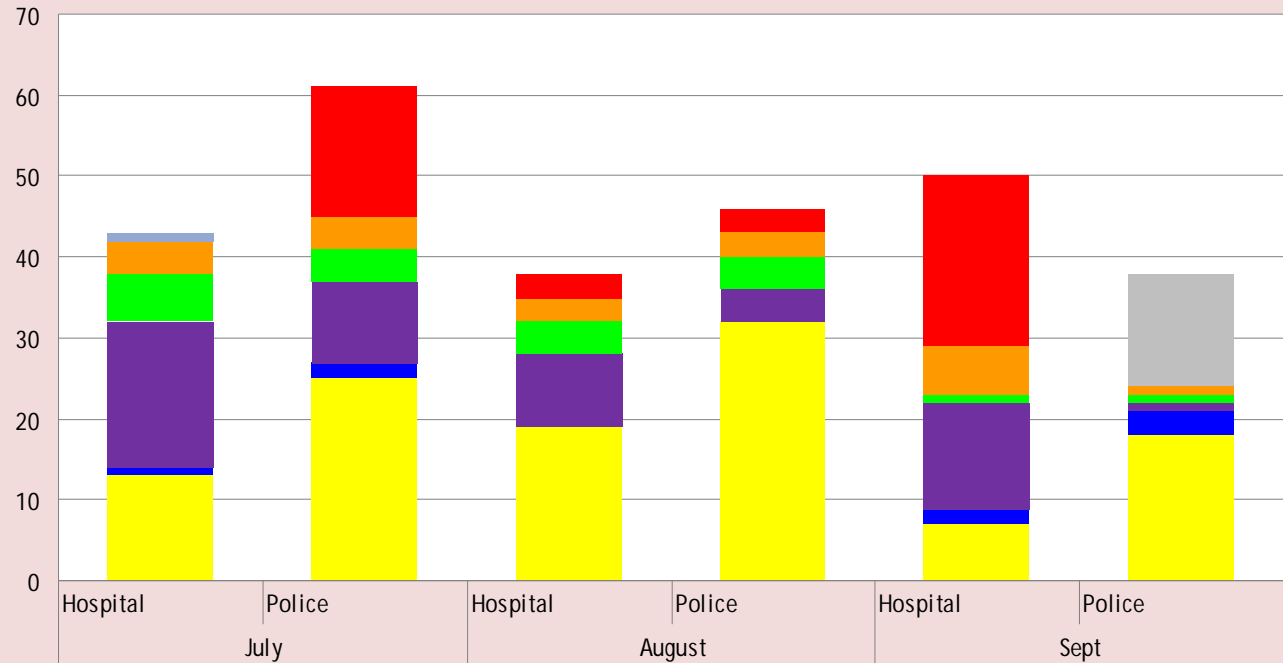


### Police stats broken down by trust Area



# Outcomes from MH Assessment

Decision made after initial assessment



	July		August		Sept	
	Hospital	Police	Hospital	Police	Hospital	Police
Not stated	0	0	0	0	0	14
other	0	16	3	3	21	0
Admitted under MHA Section 3	1	0	0	0	0	0
Admitted under MHA Section 2	4	4	3	3	6	1
Admitted / transferred on an informal basis	6	4	4	4	1	1
Was suffering from mental disorder follow up arranged	18	10	9	4	13	1
Was suffering from mental disorder no follow up required	1	2	0	0	2	3
Discharged following assessment solely by doctors without S12	0	0	0	0	0	0
Discharged - Was not suffering from mental disorder	13	25	19	32	7	18

# Waiting Times

- National Guidelines stipulate face to face interviews with detained persons (under s136) should be completed within 3 hours
- In Q2 Hampshire  
55% interviews met this target in Hospital  
26% interviews met this target in Police Custody Centres

# Opportunities

- Implementation of multi agency s136 Action to meet National Standards (RPsych)
- Review the current configuration of the Place of Safety in Hampshire (SHFT) by end of March 2013
- Develop tighter Joint Working arrangements between operational front line services
- Review medical and AMHP arrangements to provide swifter attendance for assessment by end of March 2013
- Work alongside commissioners to inform service development

# National and Regional Impact

- Hampshire is reflective of National Issues
- ‘Hampshire is making good progress in comparison to Regional counterparts’

Julie Kerry, Associate Director, Mental Health & Learning Disability - NHS South of England

- Hampshire Project Work - ‘This is not only very impressive but also immensely helpful’

Dr Julie Chalmers, Chair of the National 136 Steering Group, RCoP when feeding back on the Hampshire s136 Action Plan

# Questions