

Supporting (troubled) families

Safe & Healthy People Select Committee
23th November 2012

Ian Langley Strategic Lead Supporting
Troubled Families HCC

Background – National Programme

- Civil unrest over 5 days of August 2011
- Public service costs/ Total Place
- Prime Minister's commitment re 120,000 families costing approx £9bn p/a
- Troubled Family Unit – Communities and Local Government
 - Sharing information
 - National pooled budget
 - Local programmes - engagement and intensive interventions
 - Payment by results investment
 - Network of Local Leads funded by CLG
- Links to DWP Work Programme
- Emphasis on Services (Local Authorities, Police, Health, Prisons, Probation, Schools, Housing, YOT, VCS) working differently together

Programme 'ambition'

- 3 year programme, 10 year ambition - lasting and sustainable change
- Commitment to scope of National programme relating to 1,590 families in Hampshire
- 530 families in Year 1
- Build on early experience of Family Intervention Programmes
- Not just more of the same

Programme Impacts

- **Improved outcomes** and lasting positive changes to the lives of families in Hampshire
- Greater **inter-agency coordination** and joined up working with whole families
- Demonstrating the benefits (financial and non financial) of **early intervention and prevention**
- **Transformational ambition** for a new funded and sustainable delivery model for working with families

National definition

Troubled families are households who:

1. Are involved in crime and anti-social behaviour (ASB);
2. Have children not in school;
3. Have an adult on out of work benefits.

.....and as a result cause high costs to the public purse.

The reward grant can only be claimed for those families meeting at least two of the three criteria where successful outcomes are achieved. However non eligible high cost families should still be included.

The expectation is that families meeting all three criteria should be targeted for support.

Local discretion filters can also be used by partners to determine other attributes that are cause for concern e.g. substance abuse, domestic violence call outs, social care needs etc.

Troubled Families Cohort

££££££££ 80%

Families in receipt of statutory interventions within the social care, mental health, criminal justice system and benefit dependency

££ 20%

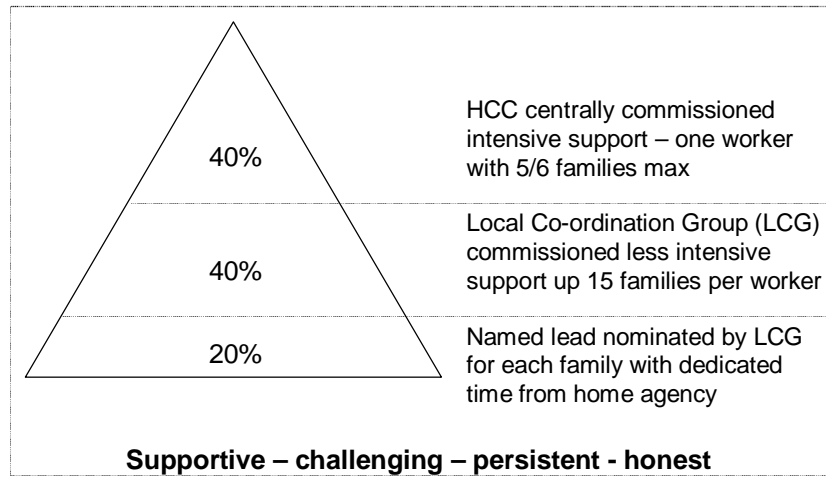
Families receiving regular specialist and targeted interventions for severe and/ or persistent problems

Troubled family cohort

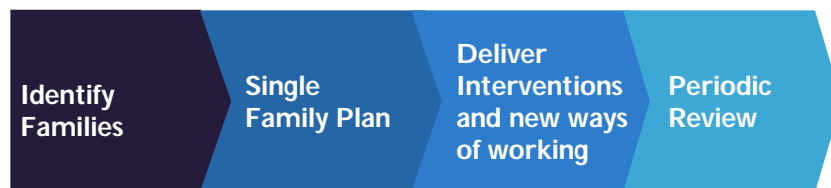
Family members coming into contact with police, social care, local authority, housing, primary and acute health services, school welfare – triggering agency assessments if presenting behaviours and symptoms of persisting or increasing problems

Families accessing universal/ community support services at vulnerable points in their lives e.g. school transition, adolescence, job loss, debt, esteem, relationship problems, lifestyle issues, stress etc

Intervening with troubled families

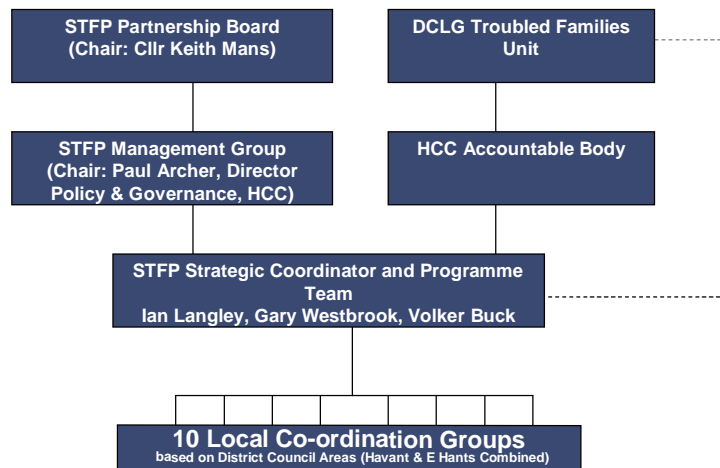


Single (Co-ordinated) Family Plans



It is proposed that each family included within the programme will go through the following high level process at a local level:

Programme Structure and Governance



Finances

- DCLG payment by results funding – one off per family funding linked to demonstrating outcomes
- Upfront “Attachment Fee” (average 60%) and in arrears “Reward Funding” (average 40%) based on demonstrating successful outcomes
- Robust evidence / audit trail will be required to claim reward funding
- DCLG funding alone will not meet local need.
- Additional contributions already identified (HCC Leaders contribution, FIP provision, Constabulary contribution)

Early Progress

- Strategic coordinators and teams appointed.
- Established all Local Coordination Groups and appointed Senior Responsible Officers (SRO) for each group in July / August 2012.
- Formalised data sharing agreements in place for purposes of identifying year 1 cohort.
- Significant progress made identifying year 1 cohort – Family Plans now being drawn up
- Support for funding & commissioning arrangements agreed by the STFP Strategic Board on 28/9/12 and by Cabinet on 29/10/12
- Tender process for Intensive Support Service underway
- Building links with other key stakeholders (Health, Housing, VCS, ESF Pathways etc)

Next Steps

- Finalise year 1 cohort ASAP
- Complete individual family assessments and plans
- Develop local strategies place based on individual assessments
- Release local funding to realise quick wins.
- Continued identification and engagement with key local partners (e.g. Schools, RSL's, VCS etc)
- Local branding of programme.....Supporting XXXXXXXX Families
- Engagement with families!
- Webpage www.hants.gov.uk/supporting-troubled-families