



South East Hampshire
Resource Centre Proposal
2012/13

Stakeholder Briefing



Rationale For Change

- South Central Ambulance Service NHS Foundation Trust (SCAS) has been reviewing its estate strategy in the Portsmouth and South East Hampshire area and can confirm that this development was ratified by the Trust Board in March 2012 with a view to progress the project over the next 12-18 months.
- The current Ambulance stations within the area do not meet our requirements and would need extensive refurbishment and building works. Some station garages are not large enough to accommodate the modern ambulances we use.



Rationale For Change

- Rather than the traditional emergency 'Static' ambulance provision based at ambulance stations, SCAS employs a mobile, 'Hub and Spoke' service delivery model in which ambulances and crews have a shift commencement location and base for personal items and equipment.
- Once the shift commences, these crews are mobile across the whole South East Hampshire area utilising specified locations (standby points) which are pre-determined as being strategically closer to the patient.
- To further compliment this way of working we have adjusted our rosters to ensure that we have sufficient ambulance resources during peak times and allows greater flexibility in the resource movement across the area
- This development will not impact on the way in which the service is delivered, patients requiring our service will continue to access in the same way and we will continue to respond accordingly.



Benefits to Patients

- Speedier response from standby points located around South East Hampshire.
- Ambulances positioned more appropriately to meet demand.
- Demand changes by time of day and day of week so we can flex our resources through standby points to meet this changing demand profile.

South Central Ambulance Service NHS Foundation Trust



Benefits to Patients

- Efficiencies gained through Unit Hour availability providing additional operational resources. (vehicle maintenance & staff allocation)
- Consistencies in practices throughout South East Hampshire with staff being educated locally on alternative care pathways and local services.
- Reliable fleet as they will all be garaged

South Central Ambulance Service NHS Foundation Trust



Benefits for Staff

- Much improved purpose built facilities
- Make Ready service on site to provide a clean and kitted vehicle for every shift
- Teams all starting at one location. Team Leaders and Clinical Mentors work with team enhancing Team Working ethos
- Education facilities at new site. Providing local delivery on SCAS protocols but also local variations for SE Hampshire.
- On site Fleet repair facility.

South Central Ambulance Service NHS Foundation Trust



Proactive Standby Points

- Areas of Higher Demand will have a dedicated standby point
- Across South East Hampshire there are currently 15 unserviced standby points and 4 Ambulance stations (excl Petersfield).
- The project will be looking to provide a minimum of 6 to 8 serviced standby points with full facilities.
 - The appropriateness of the current unserviced points will be reviewed
 - A standby point with full facilities must provide staff with a rest area, refreshment facilities and WC
 - These new locations may be shared facilities.
- We will not be disposing of any existing locations until we have an agreed replacement facility.

South Central Ambulance Service NHS Foundation Trust



Preferred Location

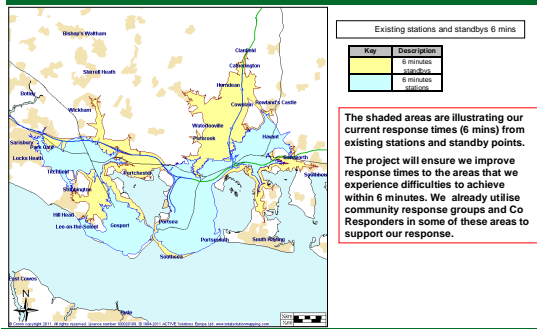
Why is North Harbour our preferred location?

- Improved road network and accessibility to all areas
- Improved efficiencies for all logistics.
- Proximity to QAH as our major receiving hospital.
- Accessibility for all staff in SE Hampshire
- Other locations would impact on response times and affect our use of our transient resources.
- Other areas considered were Anchorage Park in Portsmouth, Whitely in Fareham.

South Central Ambulance Service NHS Foundation Trust



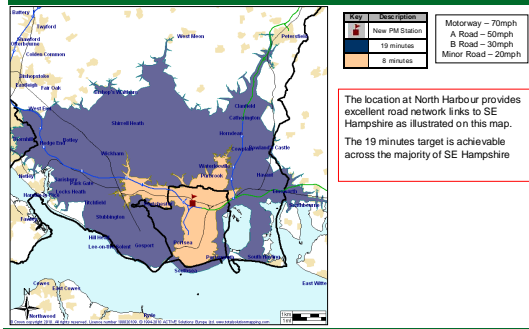
Current Response Map for SE Hampshire from existing stations and standby points



South Central Ambulance Service NHS Foundation Trust



Coverage area from proposed new location



South Central Ambulance Service **NHS**
NHS Foundation Trust



South East Hampshire Resource Centre Conclusion

- The Service delivery to our patients will not change by us moving to a single site
- We will continue to use both serviced and unserviced standby points across SE Hampshire to ensure a timely response to our patients.
- Additional standby points will improve our response to patients
- We will provide a facility fit for now and the future, which will improve the efficiency of delivering a modern day Ambulance Service

South Central Ambulance Service **NHS**
NHS Foundation Trust



South East Hampshire Resource Centre Conclusion

- The new facility will support the needs of our workforce and their development
- Centralising the equipment, Make Ready and Fleet service will provide an enhanced cost effective solution to support the front line service
- In preparation for this move we have introduced new rosters to facilitate the Team Working Ethos.
- Having the resources start and finish in one location will enable us to flex our resources in line with demand in any given area.

South Central Ambulance Service **NHS**
NHS Foundation Trust



South East Hampshire Resource Centre

Any Questions?

South Central Ambulance Service 
NHS Foundation Trust
