

**HAMPSHIRE COUNTY COUNCIL****Report**

<b>Committee</b>	River Hamble Harbour Board
<b>Date:</b>	20 April 2012
<b>Title:</b>	River Hamble Games
<b>Reference:</b>	3809
<b>Report From:</b>	Director of Culture, Communities and Business Services

**Contact name:** David Evans

**Tel:** 01489 576387

**Email:** david.evans@hants.gov.uk

## **1. Summary**

- 1.1 This report provides information for Members regarding the forthcoming River Hamble Games (planned for 21 July 2012), proposes options to be funded by the Harbour Authority and seeks volunteers to assist with managing the event on the day.

## **2. Event concept**

- 2.1. Inspired by the 2012 London Olympics, a group of local volunteers are planning a River Hamble Games, to take place on Saturday 21 July 2012, on and around the River. Events will be limited to dinghy racing, gig rowing, kayaking, swimming and running. Each event has been designed for a range of different age groups, selected to maximise opportunities to enter. The number of entries in each event is limited for safety reasons, but it is anticipated that there will be 20 teams, each consisting of 26 competitors (plus 2 coxswains for the gig rowing). Thus, the maximum number of competitors will be 560. It is expected that between 1500 and 2000 spectators and supporters will be attracted to the event.
- 2.2. Events on the water will take place either side of high water (approx 1315), with the running event starting and finishing on the Hamble foreshore later in the afternoon. A medal ceremony and post event party will take place at Hamble Point Marina from about 1600 – 2000.

## **3. Event Management and Safety**

- 3.1. An event organising committee has been established. It consists of volunteers representing all the sports involved with others dealing with finance, safety, publicity and medical support. The committee is co-

Chaired by Dr Susie Tomson (Harbour Board member) and David Evans (Marine Director and Harbour Master).

- 3.2. Events for each sport will be organised by experienced representatives of clubs which specialise in that sport. Each representative will be responsible for safety management of their event, whilst the Harbour Master is responsible for compiling an overall safety plan for the water-based activities. A separate Event Management Plan for the land-based activities has also been produced.
- 3.3. The anticipated number of competitors and spectators will create a number of logistical problems, including car parking, boat and trailer parking, launching facilities, transport across the River, toilets, changing facilities, refreshments, medical facilities etc. Each of these is being addressed by the organising committee. Generous support has been offered by local Clubs.

**4. Detailed information**

- 4.1. Posters, banners and car stickers advertising the event have been widely distributed. An example of the poster design is at Appendix 1. A website has been established, giving details of the event and how to enter: <http://www.riverhamblegames.com>
- 4.2. Entries can be made on-line by entire teams or individuals. A match-making system will be used to allocate individual entries to teams which have suitable vacancies.

**5. Funding**

- 5.1 Individual competitors will pay an entry fee for their event. This will be £10 for adults and £5 for juniors. The fee will include a free competitors T-shirt bearing the Games logo and team name. Entry fees will account for a significant part of the funding required to run the event, but additional funds have been provided by Hampshire County Council (£2000) and offers of assistance, either in cash or in kind, have been received from numerous local businesses and organisations. The River Hamble Harbour Board has already agreed in principle to provide financial support for the event, and a number of options are presented below for consideration, either individually or in combination:

<b>Item</b>	<b>Estimated cost</b>
T-shirts for volunteers and junior competitors	£750
Medals	£900
St John's Ambulances x 2	£450
Spill kits for safety boats	£100
Swim caps (for identification purposes)	£300
Toilets (Portaloos)	£1200

**6. Volunteers**

- 6.1. A great many volunteers will be required to assist with safety management, marshalling and coordination on the day. If members wish to volunteer, they should contact the Volunteer Coordinator, Karin Wood, at [volunteer@riverhamblegames.com](mailto:volunteer@riverhamblegames.com).

**7. Recommendation**

- 7.1. **It is recommended that members of the Harbour Board note this report, agree the item(s) which are to be funded by the Harbour Authority, and consider offering their services as individual volunteers to assist with managing the event on the day.**

**CORPORATE OR LEGAL INFORMATION:**

**Links to the Corporate Strategy**

<b>Hampshire safer and more secure for all:</b>	yes
Corporate Improvement plan link number (if appropriate):	
<b>Maximising well-being:</b>	yes
Corporate Improvement plan link number (if appropriate):	
<b>Enhancing our quality of place:</b>	no
Corporate Improvement plan link number (if appropriate):	

**Section 100 D - Local Government Act 1972 - background documents**

**The following documents discuss facts or matters on which this report, or an important part of it, is based and have been relied upon to a material extent in the preparation of this report. (NB: the list excludes published works and any documents which disclose exempt or confidential information as defined in the Act.)**

Document

Location

None

## **IMPACT ASSESSMENTS:**

### **1. Equalities Impact Assessment:**

- 1.1. A full Equalities Impact Assessment for the River Hamble Harbour Authority's compliance with the Port Marine Safety Code has been carried out and this report does not raise any issues not previously covered by that Assessment.

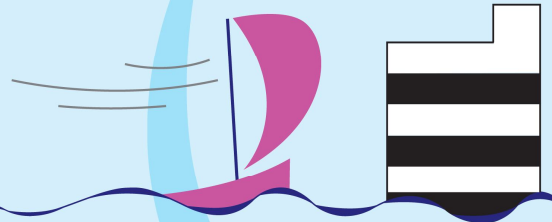
### **2. Impact on Crime and Disorder:**

- 2.1. This report does not deal with any issues relating to crime and disorder.

### **3. Climate Change:**

- a) How does what is being proposed impact on our carbon footprint / energy consumption? The contents of this report have no significant impact on carbon footprint or energy consumption.
- b) How does what is being proposed consider the need to adapt to climate change, and be resilient to its longer term impacts? Not applicable to this report.

# River Hamble



Inspiring Sport on the River

21st July 2012

## Games 2012

KAYAKING  
SAILING  
ROWING  
RUNNING  
SWIMMING

BE A  
PART  
OF IT!

for individual glory and team pride  
register now at [riverhamblegames.com](http://riverhamblegames.com)

