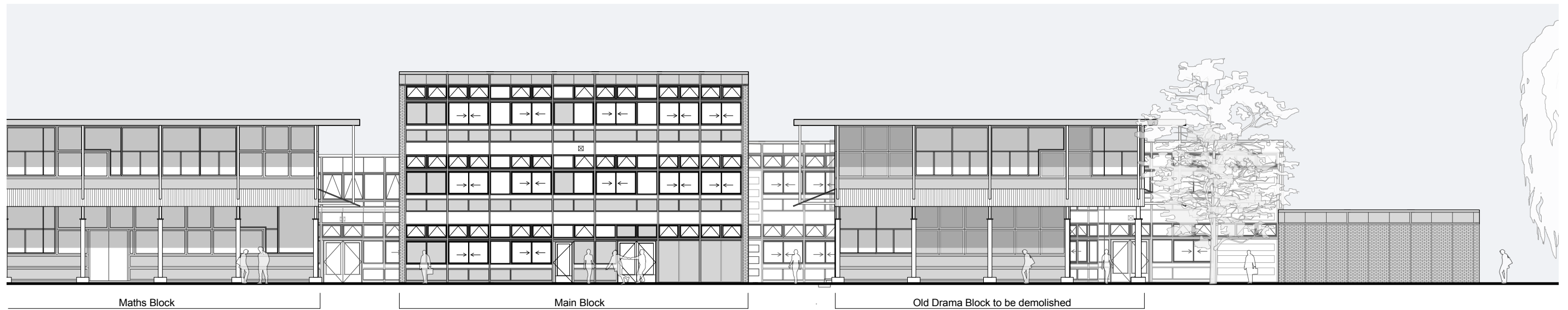
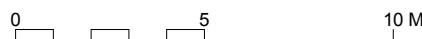
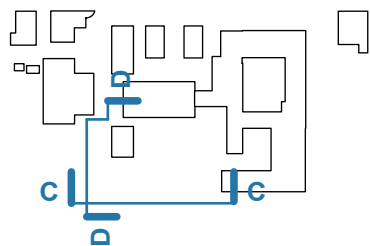


Existing West Elevation C-C



Existing North Elevation D-D



**Notes**

- 1 This drawing is © copyright Hampshire County Council 2013. No unauthorised reproduction of any kind is permitted.
- 2 No Dimensions to be scaled from this drawing
- 3 This map is reproduced from Ordnance Survey material with the permission of Ordnance Survey on behalf of the controller of Her Majesty's Stationery Office © Crown copyright. Unauthorised reproduction infringes Crown Copyright and may lead to prosecution or civil proceedings. (100019180), (2013)

rev	description	date	by
A	Planning Issue	10/10/13	CH

		HCC Property Services, Three Minsters House, 76 High Street, Winchester SO23 8UL. tel: (01962) 847801			
<b>PROJECT</b> Calthorpe Park Secondary School Expansion		<b>SHEET CONTENTS</b> Existing Elevations		PROPERTY SERVICES	
SCALE 1:100 @A1 1:200 @A3	DATE 04/07/13	DRAWN CH	CHKD. BK	DRAWING No. <b>P10069-301</b> FILE REF. P10069_300 Elevations	REVISION <b>A</b>

PLANNING