

# Do you know someone who needs housing with onsite care and support?

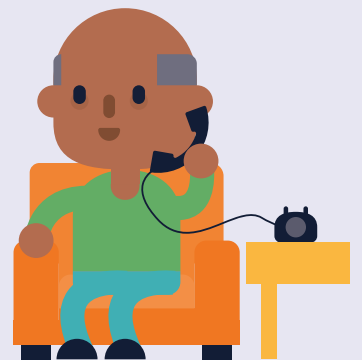
Extra Care Housing is designed for people who need care and support but want to keep their independence



- If you or a family member are over 55, eligible to join the local housing register and need support to stay independent, Extra Care Housing could be the solution
- If you've been assessed as eligible for care from Hampshire County Council and have a housing need or are an existing tenant who may benefit from Extra Care accommodation, contact our friendly team for an informal chat about Extra Care Housing

## Extra Care provides:

- Your own flat with your own front door
- Qualified care staff on site 24 hours a day for planned care
- Emergency response service
- Shared facilities such as restaurants and gardens
- Social events and activities



## Extra Care housing – safe, secure but never lonely

See which schemes are suitable for you and how to apply at [hants.gov.uk/extracarehousing](https://hants.gov.uk/extracarehousing)  
Contact [extracare@hants.gov.uk](mailto:extracare@hants.gov.uk)



For information regarding how to apply to join your local housing register for Extra Care Housing, contact [housing@hart.gov.uk](mailto:housing@hart.gov.uk) or **01252 774 420**