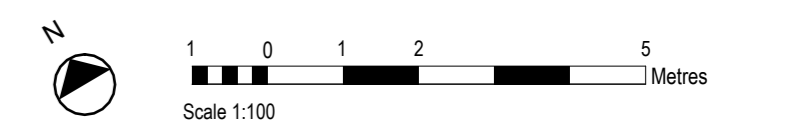
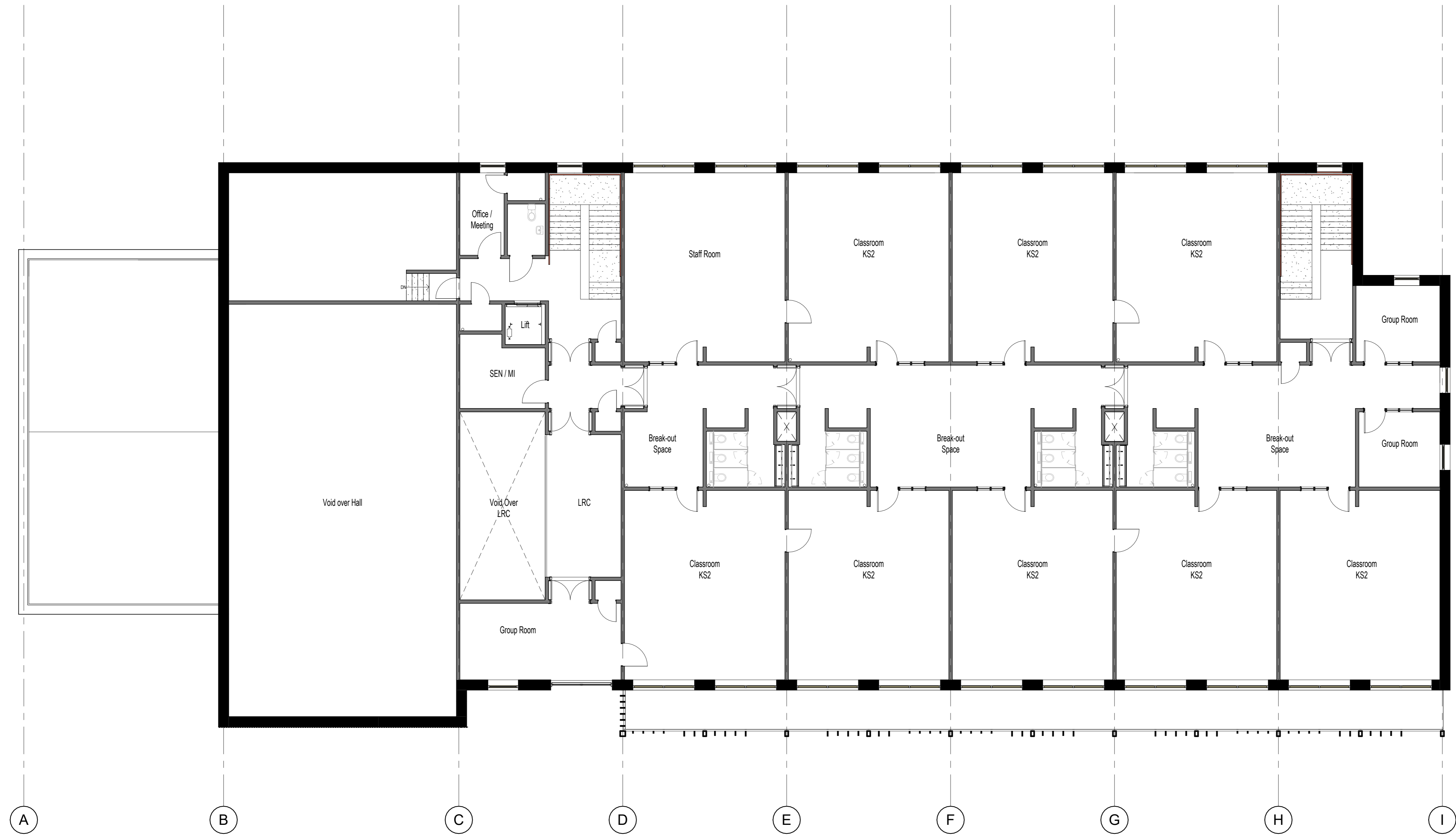


**General Notes**


1. This drawing is © copyright Hampshire County Council 2017. No unauthorised reproduction of any kind is permitted.
2. No dimensions to be scaled from this drawing. Verify all dimensions prior to construction. Immediately report any discrepancies on the document to the Architect/Contract Administrator. This document shall be read in conjunction with associated models, specifications and related consultants' documents.
3. Drawing to be read with all relevant Structural, M&E, Public Health, Landscape, Civils and Interiors drawings and specifications.
4. This map is reproduced from Ordnance Survey material with the permission of Ordnance Survey on behalf of the controller of Her Majesty's Stationery Office © Crown copyright. Unauthorised reproduction infringes Crown Copyright & may lead to prosecution or civil proceedings (100019180) 2017 Hampshire County Council

Notes:



Rev	Description	Date	By	Chkd
C	Consultation Information	14.03.23	HCC	HCC
B	For Information	10.02.23		
A	Sketch issued	11.01.23		

HCC Property Services,  
Three Minsters House,  
76 High Street, Winchester SO23  
SUL  
tel: (01962) 847801  
Wellesley Eastern Primary  
HCC



GA First Floor Plan

**SCALE** NTS@@@A1  
**DRAWN** ET  
**CHKD** FB

**DRAWING No.** P12462-HCC-PS-01-DR-A-2001  
project code - originator - volume - level - type - role - number revision version C .1

**SUITABILITY** FOR INFORMATION