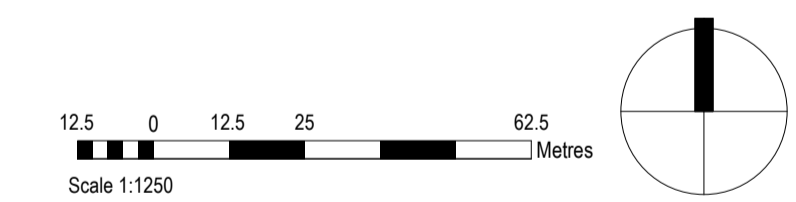


General Notes

1. This drawing is © copyright Hampshire County Council 2017. No unauthorised reproduction of any kind is permitted.
2. No dimensions to be scaled from this drawing. Verify all dimensions prior to construction. Immediately report any discrepancies on the document to the Architect/Contract Administrator. This document shall be read in conjunction with associated models, specifications and related consultants documents.
3. Drawing to be read with all relevant Structural, M&E, Public Health, Landscape, Civils and Interiors drawings and specifications.
4. This map is reproduced from Ordnance Survey material with the permission of Ordnance Survey on behalf of the controller of Her Majesty's Stationery Office © Crown copyright. Unauthorised reproduction infringes Crown Copyright & may lead to Hampshire County Council being liable in damages.

- Notes:**
- LAND OWNED BY HAMPSHIRE COUNTY COUNCIL
 - SITE BOUNDARY OF APPLICATION
 - TEMPORARY BUILDING
 - ▲ VEHICULAR ENTRANCE
 - ▲ PEDESTRIAN ENTRANCE

LANDSCAPE INFORMATION SHOWN IS INDICATIVE ONLY REFER TO LANDSCAPE ARCHITECTS INFORMATION FOR DETAIL DESIGN



Rev	Description	Date	By	Chkd
P01	Draft Issue	20/03/24	AB	DK

HCC Property Services,
Three Ministers House,
76 High Street, Winchester SO23 8UL



Hartland Park School
HCC

Proposed Site Plan

SCALE
As indicated @ A1

DRAWING No.
project code - originator - volume - level - type - role - number revision version

P12051-HCC-XX-RF-DR-A-1501 P01

SUITABILITY
code description

STAGE 1

DRAWN **CHKD**

20/03/2024 14:48:27