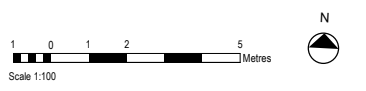
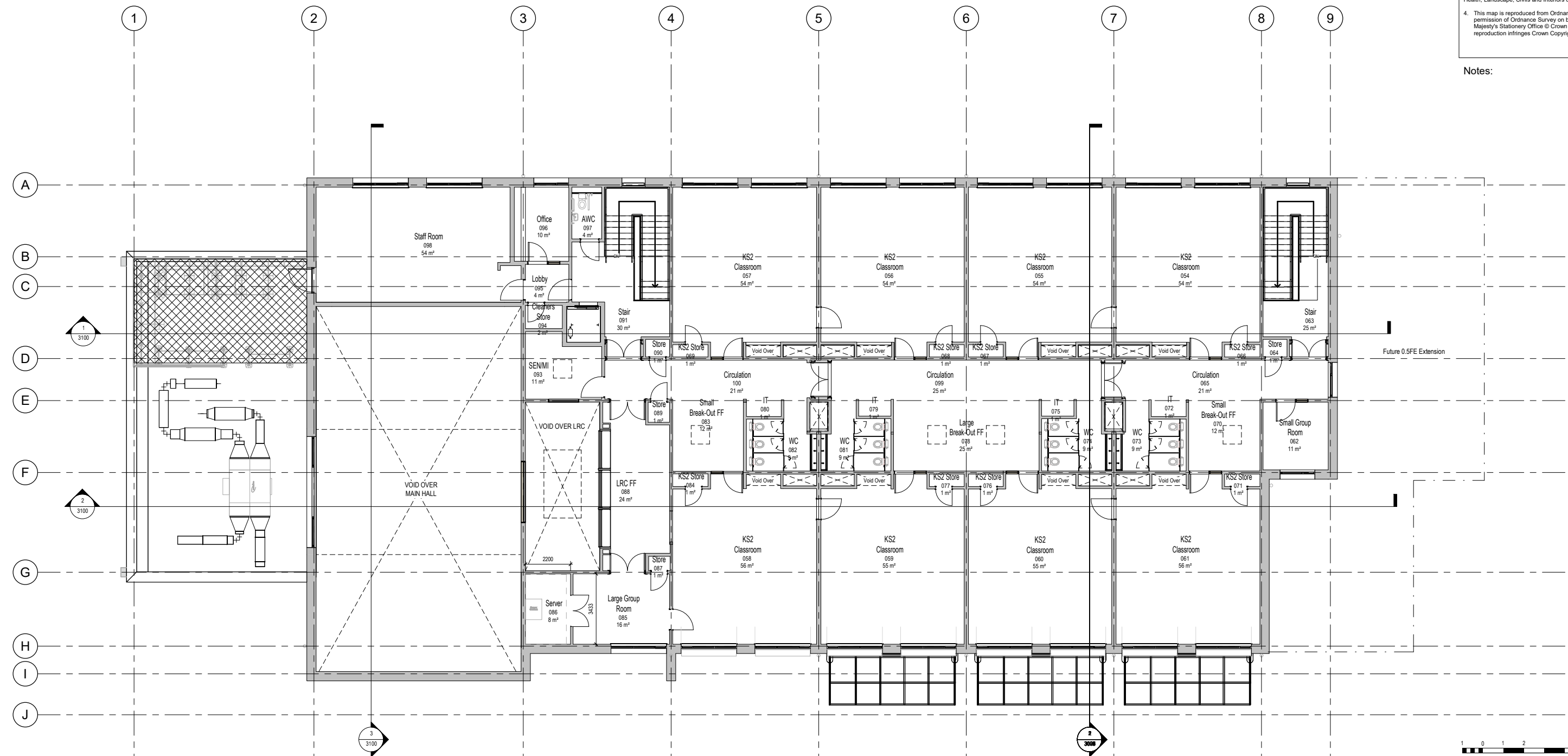


**General Notes**

1. This drawing is © copyright Hampshire County Council 2017. No unauthorised reproduction of any kind is permitted.
2. No dimensions to be scaled from this drawing. Verify all dimensions prior to construction. Immediately report any discrepancies on the document to the Architect/Contract Administrator. This document shall be read in conjunction with associated models, specifications and related consultant's documents.
3. Drawing to be read with all relevant Structural, M&E, Public Health, Landscape, Civils and Interiors drawings and specifications.
4. This map is reproduced from Ordnance Survey material with the permission of Ordnance Survey on behalf of the controller of Her Majesty's Stationery Office © Crown copyright. Unauthorised reproduction infringes Crown Copyright & may lead to legal action against you and your organisation. Hampshire County Council

Notes:



Rev	Description	Date	By	Chkd
P01.02	Internal layout adjustments	20/03/24	AB	DK
P01.01	Drafts circulated internally for comment	12/03/24	AB	DK
P01	Draft Issue	26/02/24	AB	DK

HCC Property Services,  
Three Ministers House,  
78 High Street, Winchester SO23  
8UL

Hampshire County Council

Hartland Park Primary School  
2FE

GA First Floor Plan

SCALE: 1:100@A1  
DRAWN: AB  
CHKD: DK

DRAWING No. P12051-HCC-XX-01-DR-A-2001 P01.02  
project code - originator - volume - level - type - role - number revision version

SUITABILITY: S0  
code description

20/03/2024 14:50:48