

Universal Services

Delivering high quality and essential services that are universally available to everyone

Roads and transport infrastructure



1,750
bridges/
structures.



4,237
miles of
footway.

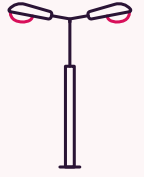


5,500
miles of
carriageway.



590
traffic signal
installations.

157,000
streetlights and
illuminated signs.



540
real time
travel information signs at
bus stops and bus stations.



Travel – every day in Hampshire

96% everyday journeys in Hampshire are made on roads, cycleways, and footways.
(4% of residents in Hampshire travel by train)

Hampshire transport management

788
vehicles supplied
and maintained.

37%
HTM vehicles
transitioned to electric.



450,000
people drive
to work.



22500000
car miles driven.

92 gritters*
*County Council and
third party owned.



Trading Standards

£1,050,000 worth of non compliant or unsafe goods stopped from entering the UK. 18,852 enquiries were received from residents, businesses and partners.

Estimated **£14,992,000** of consumer detriment prevented through our work.

Waste, minerals and flood management – every year in Hampshire

Around **95%** of all household waste is diverted from landfill, 39% is reused/recycled and energy recovery creates enough energy equivalent to power 53,000 homes.

126,500 tonnes of waste delivered to 24 Household Waste Recycling Centres. Of this, 78% was reused, recycled, composted or recovered.

599,000 tonnes of household waste and recyclable material which is managed.

2.05 million bookings were made by residents.

On average **430 flood investigations** are carried out every year in Hampshire.

Approximately **2.2 million tonnes of sand and gravel** is produced in Hampshire.

Property and facilities

15

new schools, major extensions, or refurbishments for **2,150 new school places by 2025.**

150+

supported services by Facilities Management for Hampshire County Council and partners.



10,442

buildings managed and maintained each year.

43,000

support calls a year.

Registration Service

13,398

notice of **marriage/civil partnerships.**

20,915

births and deaths registered.



5,362

ceremonies.

Outdoor centres

70,000

residential bed **stays** including camping and pods.

4

outdoor centres.

Countryside Service

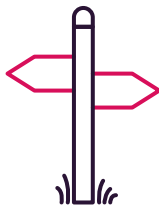
2 million

visitors to country parks each year.



3,000

miles of **public rights of way.**



120,000

hours of **volunteer support** each year.



Sir Harold Hillier gardens

10,000+

volunteering hours per year

250,000

visitors

3,600

hectares of land managed for **wildlife, heritage, and public access.**

River Hamble harbour authority

3,200

vessels moored over **8.5 miles of protected waterways.**



Coroner Service

6,678

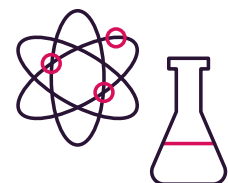
referrals and **held 1,050 inquests** in 2022 including Southampton and Portsmouth.



Scientific Services

10,000

samples tested for compliance to regulations by 30 scientists.



Archives and local studies

100,000 records published online.

32,000 archive documents accessed.