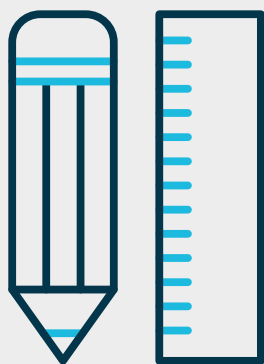


Consultation on the Future Education offer in Whiteley and Fareham

Information pack

28 March to 31 May 2024



Contents

Introduction	3
Responding to the consultation	3
How your views will be used	5
Background and Context	6
Hampshire County Council's duty to ensure sufficient school places	6
Why is a new school required in Whiteley	6
Existing Secondary Schools local to the Whiteley area	9
The three options proposed	12
Option 1	13
Option 2	17
Option 3	22
Conclusion	27
Appendix 1: Glossary	28
Useful links	30
Appendix 2: Contextual data	31

Introduction

Hampshire County Council will be building a new 900 place secondary school to serve the new housing development at Whiteley (known as North Whiteley). The new secondary school, known here as 'North Whiteley Secondary' School, is planned to open for the start of the 2027-2028 academic year and will cater for the years 7-11 and will admit up to 180 students per year group.

This Information Pack provides clarification from Hampshire County Council regarding the education offer for children in Whiteley and Fareham once the new North Whiteley Secondary School is open and sets out options for managing the impact on existing local schools. The options under consideration are:

Option 1: Build North Whiteley Secondary School as a new 900 place Academy and The Henry Cort Community College remains operational.

Option 2: Build North Whiteley Secondary School as a new 900 place Academy and The Henry Cort Community College closes.

Option 3: Relocate The Henry Cort Community College to the North Whiteley Secondary School site in new 900 place accommodation.

We are seeking views on these options from 28 March to 31 May 2024. Please read the information contained in this pack carefully before sharing your views.

Responding to this consultation

This consultation will run from **Thursday 28 March 2024 until 11:59pm Friday 31 May 2024**.

Please ensure that you respond within this period as responses received after the closing date will not be included in the consultation reports.

This Information Pack provides detailed information about the proposals, which we would encourage you to read before sharing your views.

A presentation has also been recorded to give further detail about the background and proposals. This can be found **here**.

A Frequently Asked Questions document can also be found linked on the **consultation webpage**. It will be updated periodically throughout the duration of the consultation so please check this document before responding.

You can give your feedback using the consultation Response Form, available online here:

North Whiteley Consultation Response Form

You can also email your response directly to Hampshire County Council using the email address: **strategicplanningunit@hants.gov.uk**

If you are unable to email or visit the above website and wish to respond to this consultation, please write to The Strategic Development Team, Children's Services Department, Ell Court North, Winchester, Hampshire SO23 8UG **by 31 May 2024**.

During this consultation period, there will be opportunities for parents, students, staff and other interested members of the community to meet with Hampshire County Council officers at drop-in events and comment on the options. A number of drop-in events will be held throughout the duration of the consultation period. Further information on these events will be published on the consultation website in due course.

Copies of the information pack and the consultation Response Form, along with Easy Read versions of these documents, are available to view, download and print on the **consultation webpage**.

If needed, you can use the 'read aloud' function or a screen reader to access these documents.

If you do not have access to the internet, it is available through your local library.

If you require a copy of the Information Pack or the Response Form in another language or format (such as printed, audio, large print, or Braille), or if you have any queries about the consultation, please contact **strategicplanningunit@hants.gov.uk**

You can view the Privacy Notice for this consultation, which explains how we will use your information, how this will be stored, and for how long we will keep it, within the Response Form or on the consultation webpage.

How your views will be used

The County Council is committed to five principles of consultation:

- To consult on key issues and proposals.
- To consult in good time.
- To be inclusive but with clear and appropriate limits.
- To consult using clear, simple information.
- To ensure that responses are considered when decisions are made.

The full Hampshire County Council Consultation Policy can be found here:

Consultation Policy

The purpose of this consultation is to seek the views of stakeholders in the community on the proposed options to meet the future need for secondary school provision in Whiteley and surrounding areas. It is important to the County Council that the views of stakeholders in the community, such as schools, parents, carers, children and young people together with local residents who may be affected, are heard and carefully considered.

The views submitted through this consultation will be collated and used to understand the implications of the proposed options for schools in the neighbouring school place planning areas, and access to local secondary provision for Whiteley residents. They will also be taken into consideration when considering if and how proposals could be adapted in light of these impacts and any alternative approaches suggested.

The findings of this consultation will be published and presented to the Executive Lead Member for Children's Services in October 2024. Feedback will help to inform any decision by the County Council on the options for secondary provision in the Whiteley and Fareham areas. These reports will also be made available online through the County Council website.

Background and context

Hampshire County Council's duty to ensure sufficient school places

The County Council is committed under the Education Act to ensuring that families across Hampshire have access to a local school which offers a rich and varied learning experience, has the highest expectations for their children's success and where parents can be confident that their children will be safe.

Within the County Council, it is the Strategic Development Team's role to plan, commission and organise school places, in conjunction with the Regional Director at the Department for Education (DfE), in a way that promotes the raising of standards, manages supply and creates a diverse educational infrastructure.

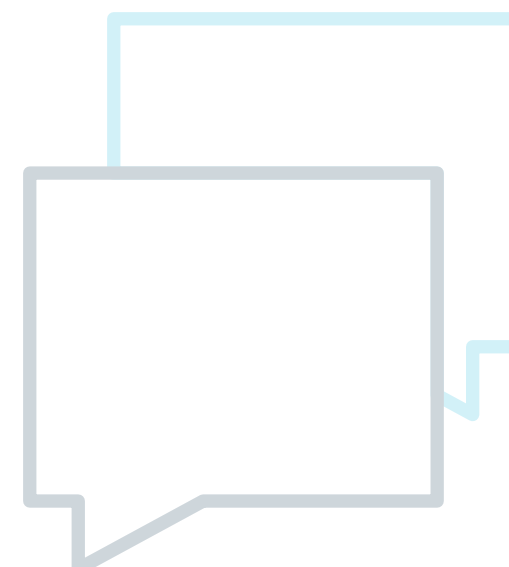
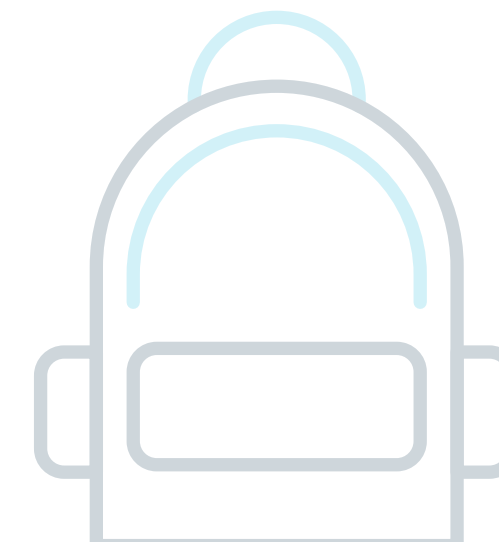
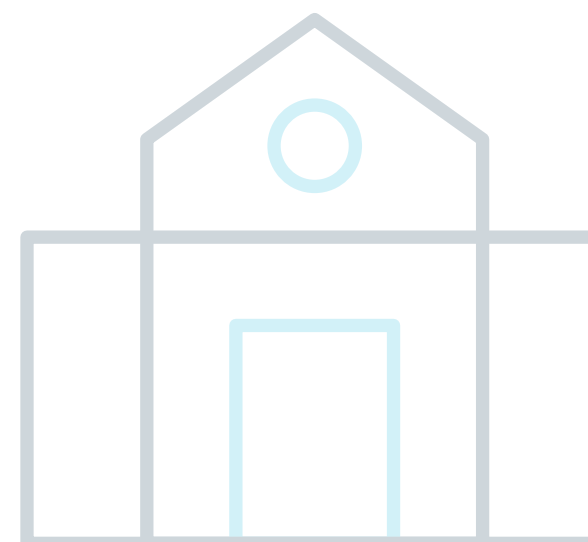
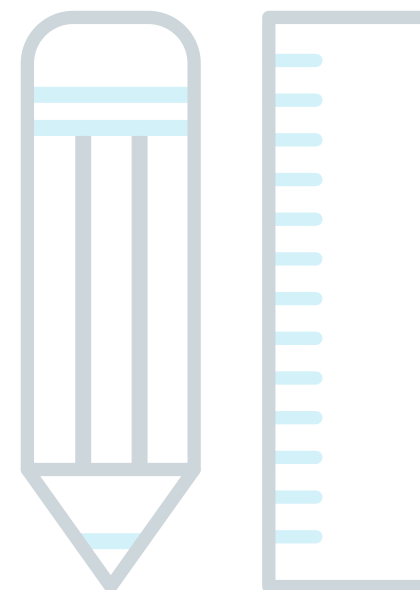
School catchment areas are used in the admissions arrangements for schools that are wholly owned, maintained and controlled by the Local Authority (also known as community schools). A school catchment area is the geographic area from which children may be afforded priority for admission to a particular school.

Linked schools are also used to determine priority for admission to certain schools. For example, an infant school will be linked to one or more junior schools and junior and primary schools will be linked to one or more secondary schools. The County Council also uses **school place planning areas**, based upon historic student movements between a small number of school catchments, to help with forecasting the demand across a local area. Data is collected on the historical and current uptake of places in all schools that are maintained by the Local Authority. This data along with other linked information, primarily birth and housing data, is used to forecast school places across the County.

Academies are independent from the local authority and are their own admissions authority, so may choose not to use catchment areas.

Why is a new secondary school required in Whiteley?

The area around Whiteley in southern Hampshire has experienced significant re-development in recent years. Initial development provided 2,000 new homes and a further 3,500 homes are planned as part of the development known as North Whiteley, 1,000 of which are already occupied.



There could be 3 primary schools serving the Whiteley area once the planned housing development is complete:

1. The first new primary school, Whiteley Primary School, was opened in 1997 and has 630 places (90 per year group).
2. Cornerstone Church of England Primary School opened in 2013 and was originally sited on Bader Way in modular buildings. A new school was built on the North Whiteley development and Cornerstone Church of England Primary School was relocated from the temporary site to the new site on Bluebell Way. The school originally opened with 210 places (30 per year group) but has been built with capacity for up to 630 places (90 per year group) in total. Since September 2022, Cornerstone Church of England Primary School has admitted up to 60 children each academic year.
3. A second primary school at North Whiteley, if required, could be opened after 1,700 dwellings on the development have been occupied which is currently estimated as 2029 or later. This school would be built to accommodate an additional 420 primary age children (60 places per year group).

This could generate up to 240 primary school places across the two developments per year group, a total of 1,680 places, which indicates the need for a new secondary school in the Whiteley area. As detailed further in this information pack, there are not sufficient secondary school places available in the long-term to meet the future demand from the Whiteley area. A new community of this size requires a new secondary school to serve it.

A new school to serve the new development would also reduce travel time for students and associated costs for the local authority. Currently 8 single decker buses travel from Whiteley to The Henry Cort Community College on a twice daily basis at a current total annual cost to the local authority of £353,069.

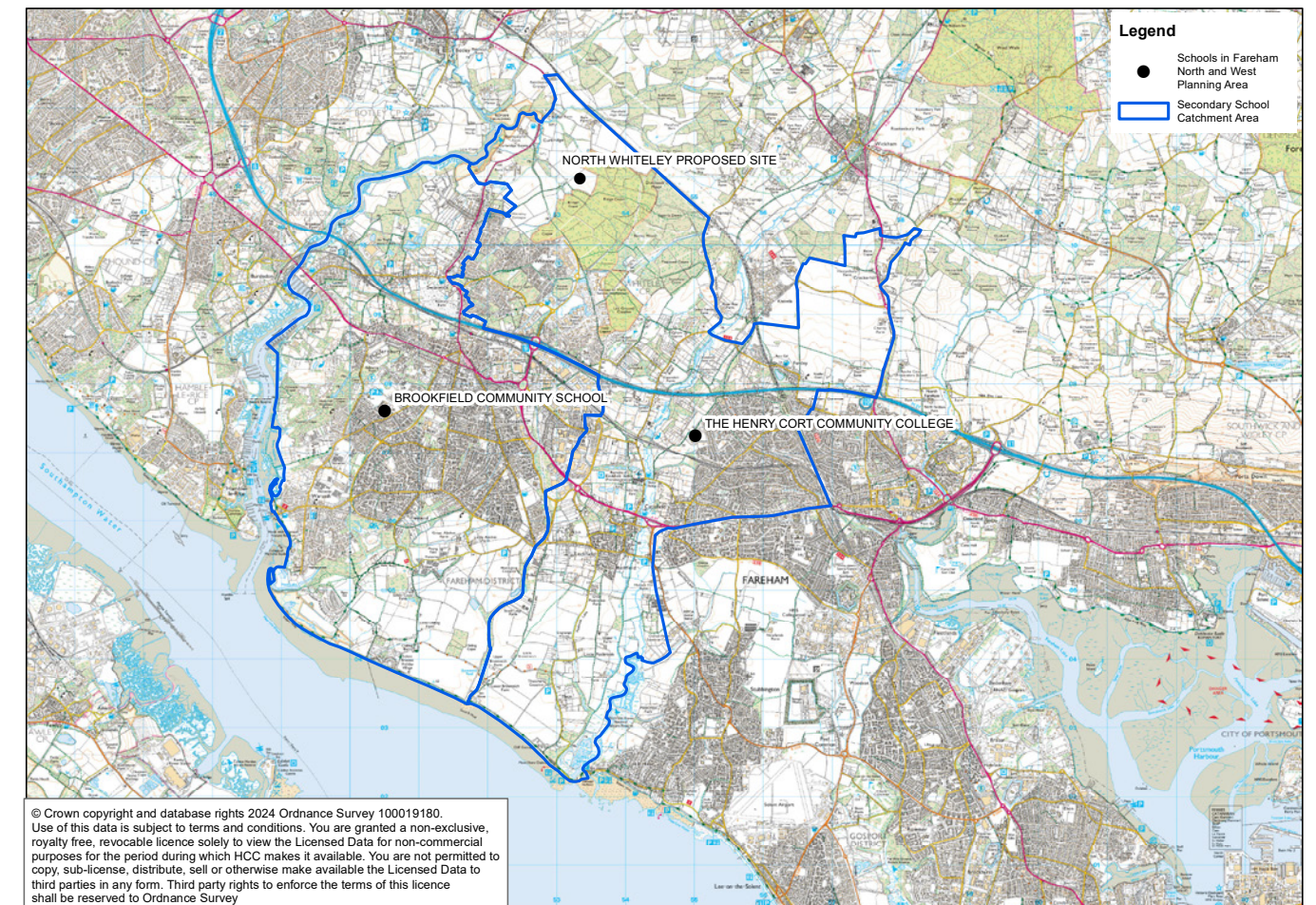
It is planned to open a new secondary school on the North Whiteley development in September 2027 to serve the whole of the Whiteley area. This new school will cater for children aged 11-16 and will be funded from **developer's contributions** (towards infrastructure required as a direct consequence of development) together with Department for Education (DfE) Basic Need funding; there are no County Council resources being used to fund this new school.

The school will initially be built with 900 places (180 per year group) but is being designed to allow expansion by a further 300 places (60 per year group) should future local demand require. The timing of any expansion would be closely monitored to ensure it is operational in line with forecast demand. Any potential expansion would be funded through Basic Need grant from the DfE, which is given to local authorities each year to help them fulfil their duty to make sure there are enough school places for children in their local area.

Existing Secondary Schools local to the Whiteley area

The building of a new secondary school at North Whiteley will have an impact on existing secondary schools in two neighbouring school place planning areas.

The **Fareham North and West planning area** consists of 2 secondary schools maintained by the local authority (community schools): The Henry Cort Community College and Brookfield School.



This planning area currently has 540 places available per year group. The Henry Cort Community College is currently the catchment school for the Whiteley area and the link school for the two existing Whiteley primary schools, so is the school expected to be most impacted when the new North Whiteley Secondary School opens. Whiteley families make up 292 of the 720 catchment children currently attending The Henry Cort Community College.

The Henry Cort Community College was judged by Ofsted as Requires Improvement in July 2023. To assist the school there is a package of leadership and curriculum interventions in place for both school staff and the governing body to support its improvement.

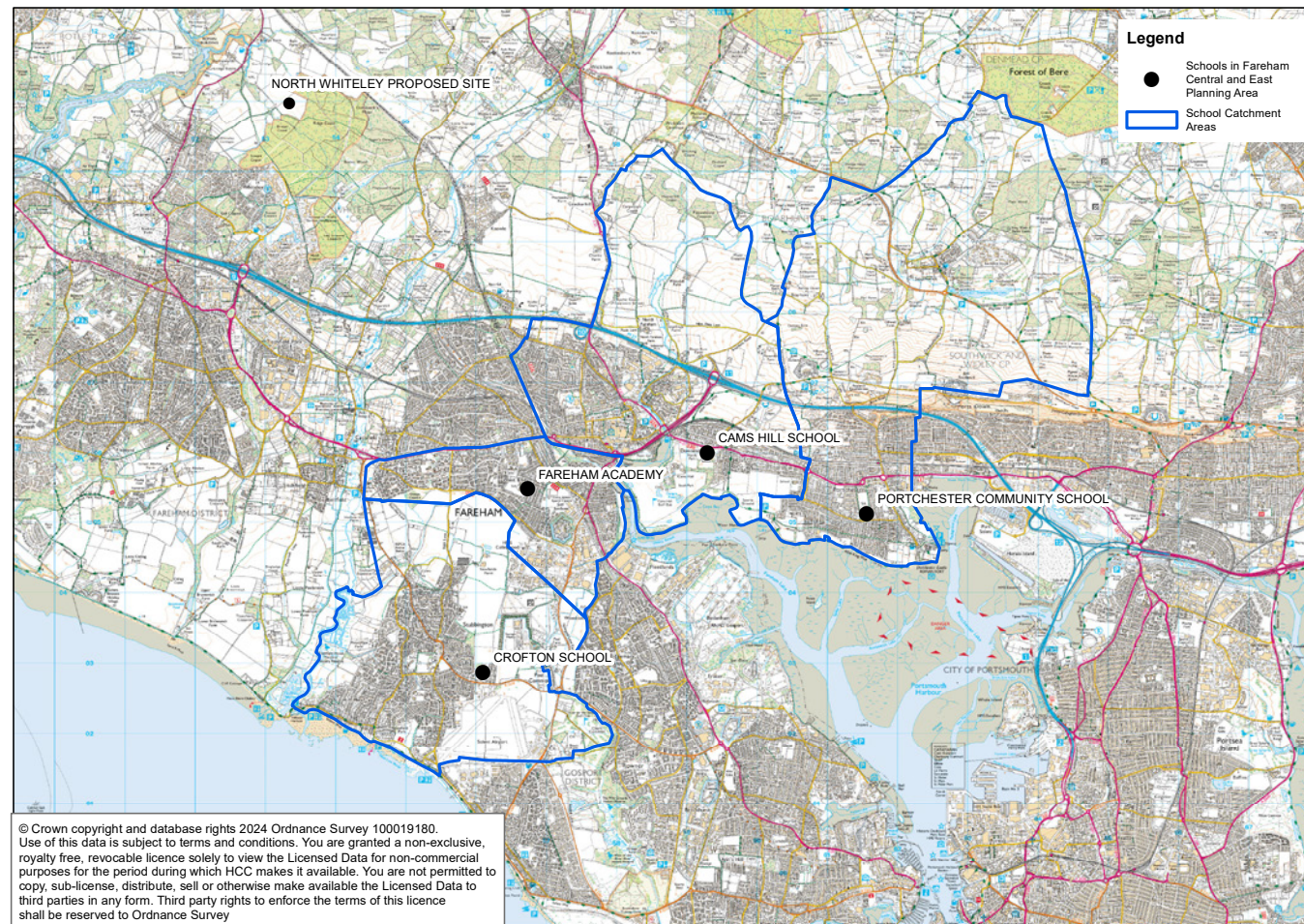
It will be reinspected by Ofsted within 30 months, and it is both the local authority's expectation and that of Ofsted that it will have improved sufficiently to be judged a Good school.

The Henry Cort Community College is currently full in years 7 and 8 and there is pressure for school places in the Fareham North and West planning area. This includes an increasing number of children living in the new housing in North Whiteley.

The long-term demand for secondary places within the Whiteley area is forecast to be between 900 – 1,200 places (or 180 – 240 places per year group). The County Council's guiding principal when planning school places is to provide local schools for local children. The forecast demand from the Whiteley area supports a new secondary school to serve the development.

The **Fareham Central and East planning area**, shown on the map below, currently consists of four secondary schools and has a total of 820 places available per year group. Three of the schools are academies: Cams Hill School, Fareham Academy and Crofton School and one, Portchester Community School, is a Local Authority maintained (or community) school.

Depending on the outcome of this consultation and our engagement with these schools this planning area may require one or more catchment area changes to ensure sufficient future school places across both the Fareham North and West, and the Fareham Central and East planning areas. This would be necessary to fulfil the County Council's statutory duty to ensure appropriate provision of local school places. Where the County Council is the admissions authority, it is required to consult on proposed catchment changes, which in this case would be two years prior to the opening of the new North Whiteley Secondary School, during autumn 2025.



The three options proposed

The County Council is consulting on three different options to meet the need for sufficient local secondary school places across Fareham North and West planning area and the Fareham Central and East Planning area.

Option 1: Build North Whiteley Secondary School as a new 900 place Academy and The Henry Cort Community College remains operational.

Option 2: Build North Whiteley Secondary School as a new 900 place Academy and The Henry Cort Community College closes.

Option 3: Relocate The Henry Cort Community College to the North Whiteley Secondary School site in new 900 place accommodation.

Each of these options are explained in detail below.

The key factors which the County Council have considered in arriving at these options are:

- Ensuring sufficient local secondary school places in both Whiteley and Fareham
- Planning for the future impact on secondary schools due to the declining numbers on roll in the primary school sector. Number on roll (NOR) is the number of students registered at a school.
- Reducing travel time and cost and promoting sustainable travel options where needed
- Impact on the financial viability of individual schools
- Impact on educational outcomes
- Provision of new modern accommodation in the heart of a large new community
- Human resources implications, for the staff at individual schools
- Community impact
- Compliance with the **School Admissions Code**^[4] and admissions law.

When considering these factors, the preferred option of the County Council is option 3, to relocate The Henry Cort Community College to the North Whiteley Secondary School site in new 900 place accommodation, but feedback is sought on all three options to ensure that all factors are known and fully considered before arriving at a final decision.

Option 1: Build North Whiteley Secondary School as a new 900 place Academy and The Henry Cort Community College remains operational

What is being proposed?

The new 900 place (180 places per year group) North Whiteley Secondary School would be run by an academy trust, to serve the existing Whiteley and North Whiteley developments, a new catchment area would have to be defined.

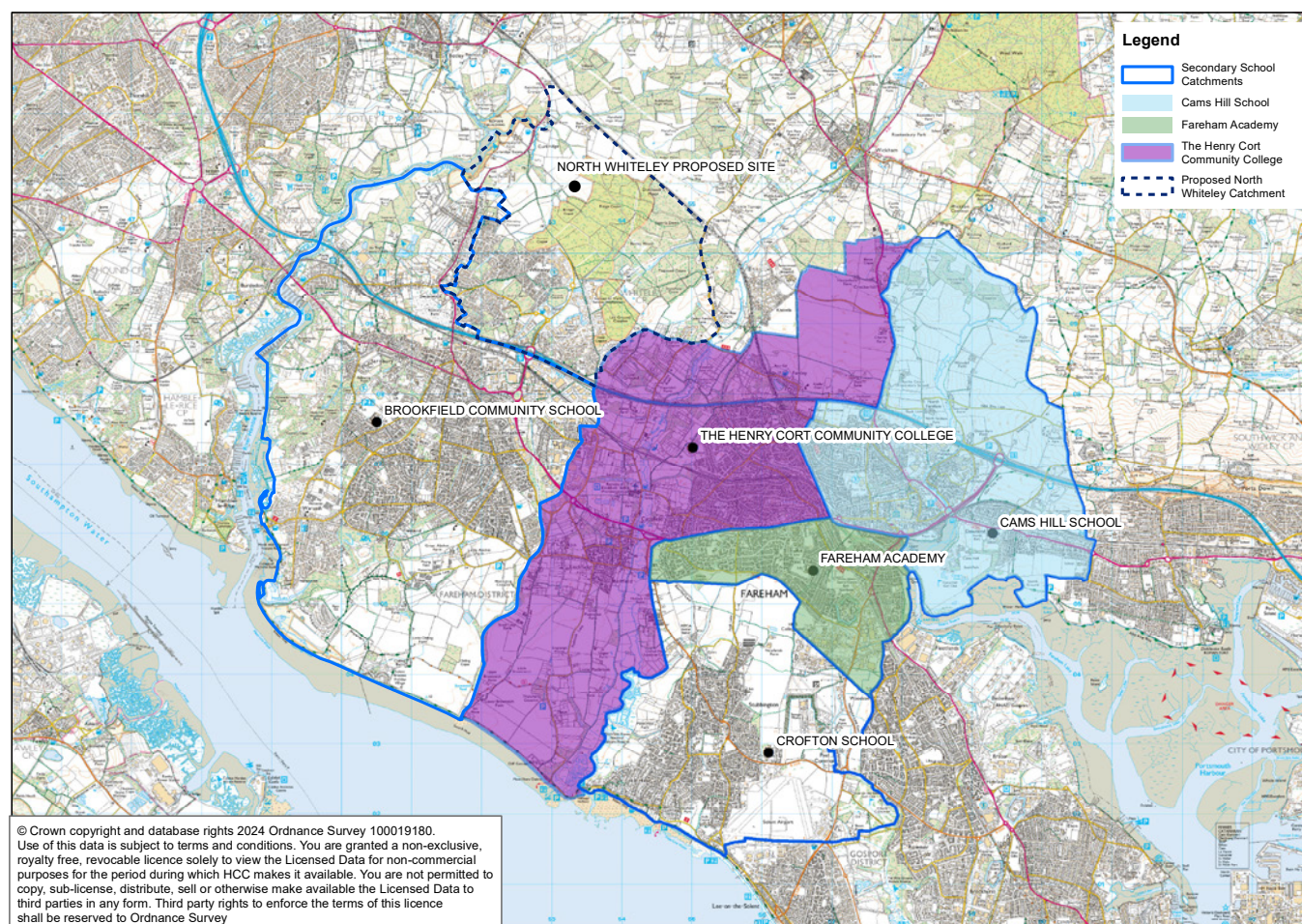
Subject to the agreement of the academy trust, the new North Whiteley Secondary School would become the linked school for Whiteley Primary School, Cornerstone CE Primary School and any future primary school built as part of the North Whiteley development, instead of The Henry Cort Community College.

The Henry Cort Community College would remain open in its current location, but its catchment area demand would reduce from 900 places (180 per year) to 600 places (120 places per year group) as it would no longer serve the Whiteley area.

The table below shows how the secondary school and primary linked published admission numbers (PANs) would change by 2027, should option 1 proceed.

Option 1			
2024 School	2024 PAN	2027 PAN	Comment
The Henry Cort Community College	180	124	Reduced PAN to match reduced number of linked primary schools.
Primary Schools linked to The Henry Cort Community College	244	124	The current link school PANs would be 274 if Cornerstone CE Primary had a PAN of 60. The school have taken 60 in recent years, but their PAN is still officially 30.
Whiteley new secondary school	0	180	New school opens in September 2027.
Primary Schools linked to Whiteley Secondary	0	150	The 150 assumes that Cornerstone CE Primary's PAN has increased to 60. It has accommodation to meet a PAN of 90 when needed, which would take the linked school PAN up to 180.

Map showing how the catchment areas would be altered under option 1. The proposed North Whiteley catchment is currently part of The Henry Cort Community College catchment.



Why is this being proposed?

The new North Whiteley Secondary School would be run as an academy because where the County Council identifies the need for a new school, specifically to meet basic need, section 6A of the **Education and Inspections Act 2006** places Local Education Authorities under a duty to seek proposals to establish an academy (free school) via the ‘free school presumption’ process.

This option means that The Henry Cort Community College could remain operational for its local community within a reduced catchment area. The estimated future intake for The Henry Cort Community College is based on the primary schools that would still be linked to it – St Columba CE Primary Academy, Orchard Lea Infant and Junior and Titchfield Primary Schools – and their respective admission numbers. The College would still have the physical capacity for a larger intake should it be required in the future, however the numbers on roll in primary schools across the county are currently falling and therefore the future intake for any secondary school is likely to be lower than stated above.

How would this be implemented?

Should option 1 be taken forward:

- The County Council would follow the statutory process to seek an academy sponsor for the new North Whiteley Secondary School to open in 2027. Further information can be found in the linked **establishing a new academy** DfE Guidance^[1]. The new school would have an admissions policy naming Whiteley Primary, Cornerstone CE Primary and any other future primary school built at North Whiteley as linked, subject to approval from the academy sponsor.
- It is likely that the new secondary school would fill from the ‘bottom up’, offering places in year 7 only initially from September 2027.
- The County Council, as the admission authority for The Henry Cort Community College would be required to complete a separate consultation on a change to its catchment area and a reduction in the published admission number in the autumn of 2025. Any decision about a revised catchment would then be taken by the Executive Member for Education in February 2026, before taking effect in September 2027 in time for the opening of the new North Whiteley Secondary School.

What impact might this have?

Over the past three years Whiteley Primary School and Cornerstone CE Primary School have admitted approximately 150 students in September as part of the main round admissions process. With the proposal to link these two primary schools to the new North Whiteley Secondary School, there is potential for The Henry Cort Community School to lose up to 150 students each year from their current catchment area once the new academy is open. The catchment changes would come into place from September 2027, from which point students starting year 7 who live in the Whiteley area would have the new North Whiteley Secondary School as their catchment school.

This option could initially have minimal impact on the existing students at The Henry Cort Community College as they would continue to attend the school. However, as funding for schools is directly related to the number of students on roll, a decline in students numbers means a reduction in funding. This presents difficulties for a school in appointing staff and delivering the full range of opportunities to students. Reduced funding could result in fewer teachers and less flexibility around group sizes. Low student numbers can also impact on leadership capacity and the workload of staff. The revenue implications for both the County Council and individual schools would be dependent on a range of factors including the final agreed approach, any transitional arrangements, and the actual impact on student destination.

If option one were to progress, it would likely lead to staff redundancies. The number of redundancies would depend on the outcome of the consultation, the resulting changes that would be made, any transitional arrangements and remaining student numbers. Effort would always be made to reduce staffing levels in a planned and sensitive way by managing vacancies as they arise, delivering savings through natural turnover and redeployment of staff and exploring voluntary redundancy. A statutory consultation would be undertaken with staff and trade unions about workforce implications at the appropriate time and in accordance with County Council policies and procedure.

Option 2: Build North Whiteley Secondary School as a new 900 place Academy and The Henry Cort Community College closes

What is being proposed?

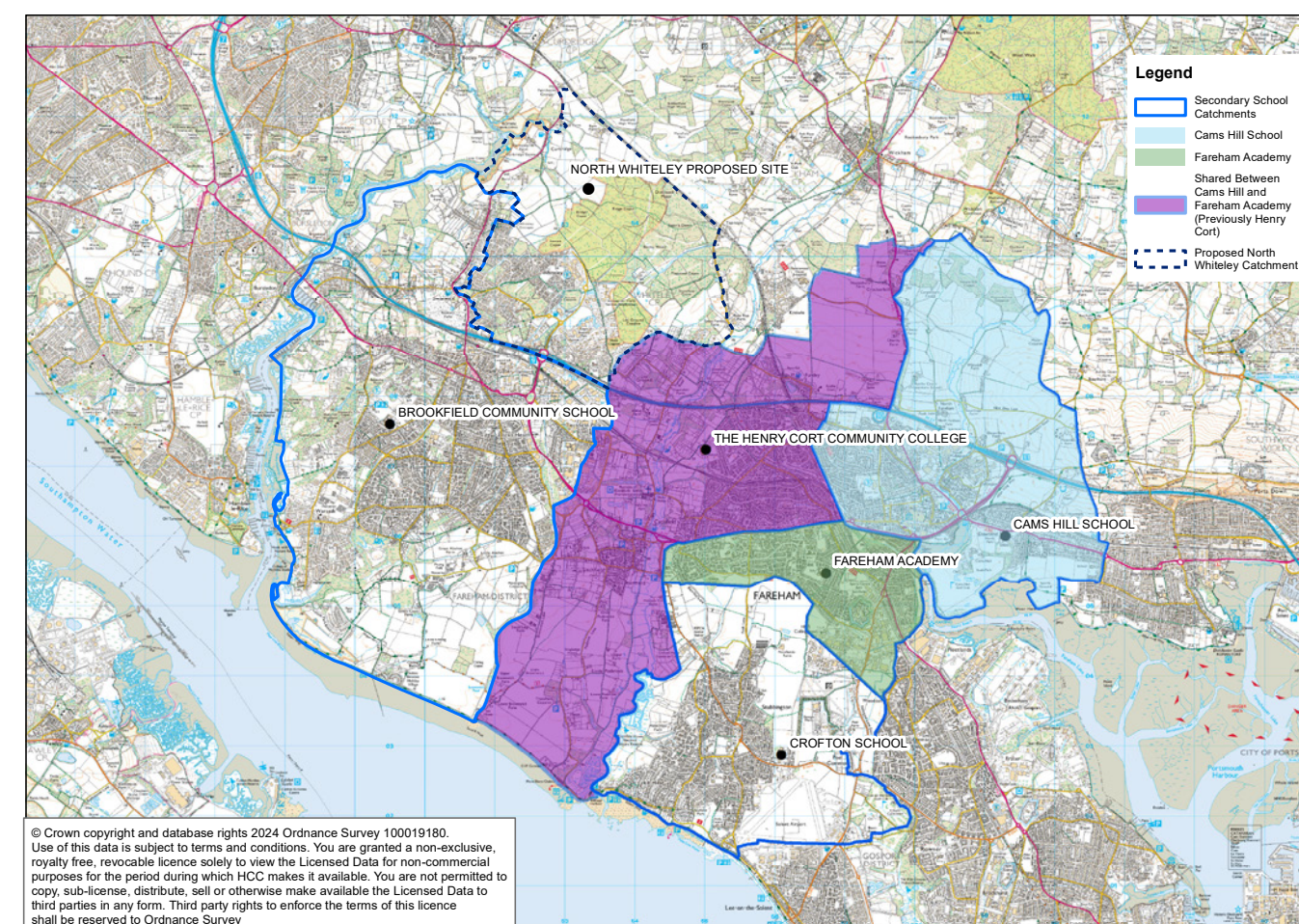
The new 900 place (180 places per year group) North Whiteley Secondary School would be run by an academy trust, to serve the existing Whiteley and North Whiteley residents through a new catchment area to be defined. Subject to the agreement of the academy trust, the new secondary school would become the linked school for Whiteley Primary School, Cornerstone CE Primary School and any future primary school built as part of the North Whiteley development, instead of The Henry Cort Community College.

The Henry Cort Community College would close and its remaining catchment area and linked primary schools (St Columba CE Primary Academy, Orchard Lea Infant and Junior and Titchfield Primary Schools) would become part of a shared catchment area for Fareham Academy and Cams Hill Academy. This is subject to agreement from Fareham Academy and Cams Hill School who are responsible for their own admissions arrangements.

The table on the following page shows how the secondary school and primary linked published admission numbers (PANs) would change by 2027, should option 2 proceed.

Option 2			
2024 School	2024 PAN	2027 PAN	Comment
The Henry Cort Community College	180	0	This is 0 in 2027 as the school would be closed under option 2.
Primary Schools linked to The Henry Cort Community College	244	0	The current link school PANs would be 274 if Cornerstone CE Primary had a PAN of 60. The school have taken 60 in recent years, but their PAN is still officially 30.
Whiteley new secondary school	0	180	This is 0 in 2024 as the school doesn't open until September 2027.
Primary Schools linked to Whiteley Secondary	0	150	The 150 assumes that Cornerstone CE Primary's PAN has increased to 60. It has accommodation to meet a PAN of 90 when needed, which would take the linked school PAN up to 180
Cams Hill School	250	250	The PAN for Cams Hill School is not proposed to change, though is subject to further consultation with the school.
Primary Schools linked to Cams Hill School	195	257	The 257 PAN in 2027 includes 50% of primary schools currently linked to The Henry Cort School. This is because the Fareham part of The Henry Cort Community School's current catchment would become shared between Cams Hill and Fareham Academy.
Fareham Academy	180	180	The PAN for Fareham Academy is not proposed to change, though is subject to further consultation with the school.
Primary Schools linked to Fareham Academy	173	235	The 235 PAN in 2027 includes 50% of primary schools currently linked to The Henry Cort School. This is because the Fareham part of The Henry Cort Community School's current catchment would become shared between Cams Hill and Fareham Academy. Historically, Fareham Academy attracts 46% of students from outside of their catchment area; if this trend continues it is expected there to be capacity at Fareham Academy despite the imbalance in PANs.

Map showing how the catchment areas would be altered under option 2: The proposed North Whiteley catchment is currently part of The Henry Cort Community College catchment.



Why is this being proposed?

The new North Whiteley Secondary School would be run as an academy because where the County Council identifies the need for a new school, specifically to meet basic need, section 6A of the **Education and Inspections Act 2006** places Local Education Authorities under a duty to seek proposals to establish an academy (free school) via the 'free school presumption' process.

A closure of The Henry Cort Community College is proposed under this option due to the likelihood of significant surplus places being created by the catchment area changes required to accommodate the new North Whiteley Secondary School, and the inevitable impact a reduction in student numbers would have on the school's revenue funding.

How would this be implemented?

Should option 2 be taken forward:

- The County Council would follow the statutory process to seek an academy sponsor for the new North Whiteley Secondary School to open in 2027. Further information can be found in the **establishing a new academy** DfE guidance^[1]. The new school would have an admissions policy naming Whiteley Primary, Cornerstone CE Primary and any other future primary school built at North Whiteley as linked, subject to approval from the academy sponsor.
- It is likely that the new secondary school would fill from the 'bottom up', offering places in year 7 only initially from September 2027.
- The County Council would follow the statutory process for closing a maintained (community) school. Further information can be found in the **closing a maintained school** DfE guidance^[2].
- A closure of The Henry Cort Community College would be phased to ensure that students are fully supported through any transitional period. This could require the provision of temporary additional places at either Fareham Academy or Cams Hill School. Detailed proposals would be provided following consultation with the secondary schools impacted.
- Detailed planning would ensure minimum disruption for all students during the closure process.
- The County Council would work with both academy trusts, and should they agree, the admissions arrangements of both Cams Hill School and Fareham Academy would be altered to include The Henry Cort Community College's remaining catchment area, including St Columba CE Primary Academy, Orchard Lea Infant and Junior Schools and Titchfield Primary School as linked schools.

What impact might this have?

Any school closure is challenging, and the impact can be wide ranging, meaning careful planning of all aspects of the process is required.

As referenced above, closure of The Henry Cort Community College would be phased to ensure that students are fully supported through any transitional period. Exactly how that would look is dependent on further consultation with the schools impacted.

Following closure there may be an increase in travel time for students within the Fareham portion of The Henry Cort Community College catchment area, as alternative options would be less local. Students whose journey to school becomes greater than the statutory walking distance (3 miles) as a result of this change, would be entitled to school transport assistance as described in the **School Transport Policy (2024)**. Conversely, travel time and costs for Whiteley residents who move from The Henry Cort Community College to attend the new North Whiteley Secondary School would reduce.

The revenue implications for both the County Council and individual schools are dependent on a range of factors including the final agreed approach, any transitional arrangements, and the actual impact on student destination. Funding could be provided to nearby schools which take on the displaced students from The Henry Cort Community College, in the event it closes.

There would be the likelihood of staff redundancies as part of the school closure process. A phased closure would mean that less staff are required to maintain the school each year until it closes. Processes would be put in place that reduced staffing levels in a planned and sensitive way by managing vacancies as they arise, delivering savings through natural turnover and redeployment of staff and exploring voluntary redundancy. Consultation with staff and trade unions about workforce implications would take place at the appropriate time and in accordance with required policies and procedure. Closure costs include redundancy payments for those staff who leave but would run alongside the cost of maintaining core staff to ensure an acceptable educational offer can be maintained for the required period.

Should a position be reached where Henry Cort Community College is closed, the future of the empty (vacated) site would be fully considered and consulted upon. If option 2 was taken forward the earliest expected date the site would be vacated is September 2029.

The Henry Cort Community College site includes a clubhouse used by the Fareham Hockey Club which is subject to a ground lease and associated with an all-weather pitch which is shared with the school. Further work would be required to understand the implications of this should a school closure or relocation be taken forward. Other community use would also be assessed, and plans put in place to manage all identified uses up until the point of closure.

Option 3: Relocate The Henry Cort Community College to the North Whiteley Secondary School site in new 900 place accommodation

What is being proposed?

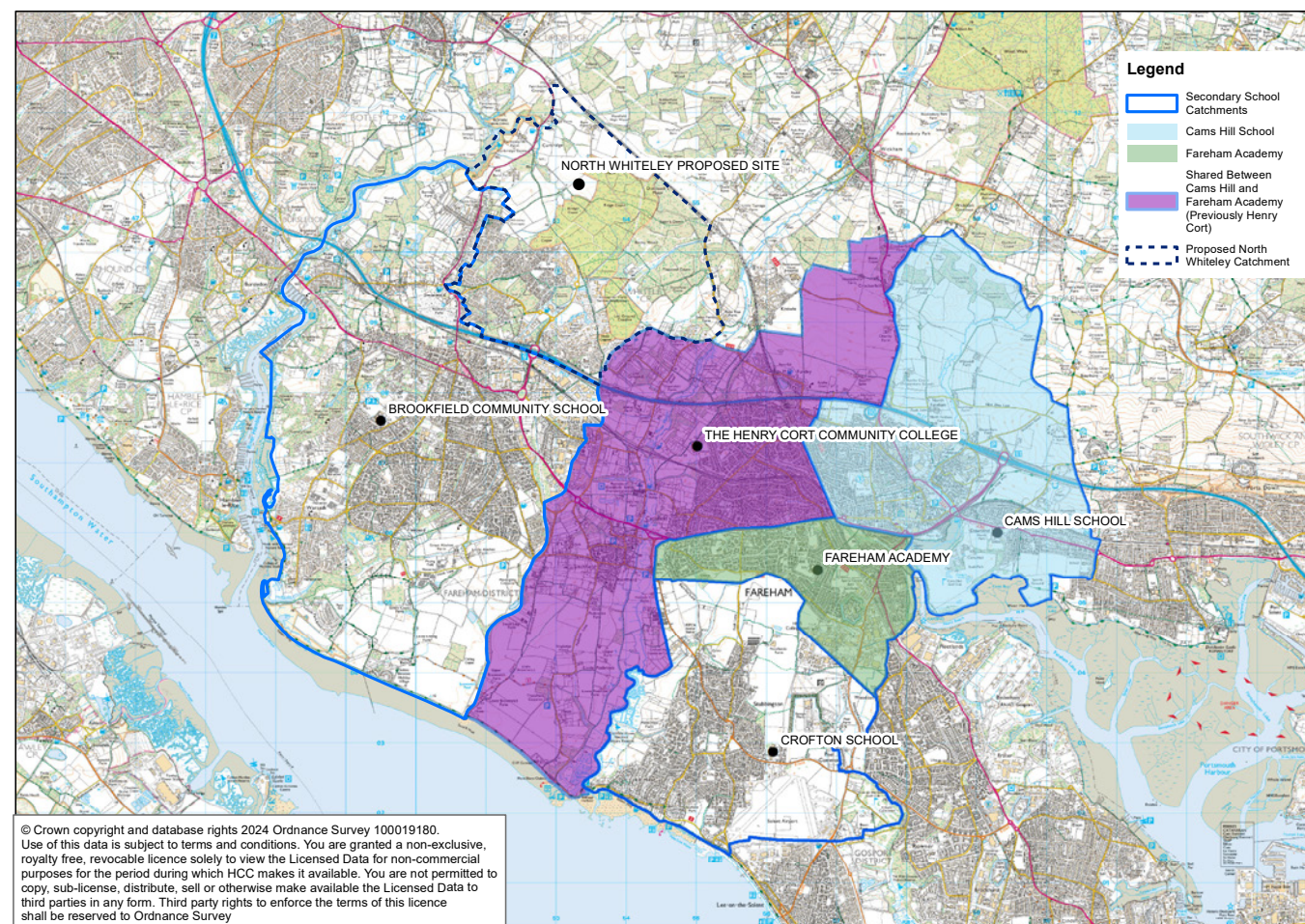
Relocating The Henry Cort Community College to a new 900 place (180 places per year group) building in Whiteley to serve the existing Whiteley and North Whiteley communities through a new catchment area to be defined. The relocated The Henry Cort Community College would then become the linked secondary school for Whiteley Primary, and Cornerstone CE Primary Schools and any other future Whiteley primary school.

Fareham Academy and Cams Hill Academy would pick-up the remaining catchment area, including incorporating St Columba CE Primary Academy, Orchard Lea Infant and Junior School and Titchfield Primary School as linked primary schools in their admission arrangements. This is subject to agreement from Fareham Academy and Cams Hill Academy who are responsible for their own admissions arrangements. If agreed, children attending the linked junior and primary schools would be given linked school priority for both schools and children living in this part of The Henry Cort catchment area would have catchment priority for both schools in their arrangements.

The table below shows how the secondary school and linked primary school published admission numbers (PANs) would change by 2027, should option 3 proceed.

Option 3			
2024 School	2024 PAN	2027 PAN	Comment
The Henry Cort Community College	180	180	Relocated to North Whiteley from 2027. The PAN remains the same but the catchment area and linked primary schools would have changed.
Primary schools linked to The Henry Cort Community College	244	150	The current link school PANs would be 274 if Cornerstone CE Primary had a PAN of 60. The school have taken 60 in recent years, but their PAN is still officially 30.
Cams Hill School	250	250	The PAN for Cams Hill School is not proposed to change, though is subject to further consultation with the school.
Primary Schools linked to Cams Hill School	195	257	The 257 PAN in 2027 includes 50% of primary schools currently linked to The Henry Cort School. This is because the Fareham part of The Henry Cort Community School's current catchment would become shared between Cams Hill and Fareham Academy.
Fareham Academy	180	180	The PAN for Fareham Academy is not proposed to change, though is subject to further consultation with the school.
Primary Schools linked to Fareham Academy	173	235	The 235 PAN in 2027 includes 50% of primary schools currently linked to The Henry Cort School. This is because the Fareham part of The Henry Cort Community School's current catchment would become shared between Cams Hill and Fareham Academy. Historically, Fareham Academy attracts 46% of students from outside of their catchment area; if this trend continues it is expected there to be capacity at Fareham Academy despite the imbalance in PANs.

Map showing how the catchment areas would be altered under option 3:



Why is this being proposed?

This option is considered to provide the best opportunity for the long-term viability of all the existing Fareham schools while also meeting the demand for local secondary school places within Whiteley. Option 3 would provide sufficient school places, without creating unwanted surplus capacity. Avoiding a school closure process would also mean a more certain future for The Henry Cort Community College students and its staff in both the short and long-term.

How would this be implemented?

If option 3 is taken forward:

- The County Council would follow the statutory process to change the location for The Henry Cort Community College (see **making significant changes** DfE guidance^[3] for more detail) and the statutory admissions process to change the catchment area and linked schools. The catchment areas and linked schools of Cams Hill School and Fareham Academy would need to be determined by each academy trust.
- Those children who are already attending The Henry Cort Community School at the time of a relocation in September 2027, would automatically remain on roll after the relocation to Whiteley. This would apply for school years 8-11 only, as the year 7 admissions process for September 2027 would be based on the new catchment area of Whiteley only.
- A split-site arrangement is likely to be needed in the short-term to accommodate all the students currently on roll at The Henry Cort Community College leading to additional revenue and transport costs initially. Although still to be determined, the plan would be to minimise disruption for years 10 and 11 students wherever possible.

What impact might this have?

A relocation would potentially strengthen long-term school financial viability for The Henry Cort Community College as growth in student numbers from the new North Whiteley development into the existing secondary would increase financial resilience. This would provide more stability for both students and staff. This option also has the potential to strengthen the long-term financial viability of both Fareham Academy and Cams Hill School given the expansion of both of their catchment areas and the increase in the number of linked primary schools.

As stated above, those children who are already attending The Henry Cort Community School at the time of a relocation in September 2027 would automatically remain on roll after the relocation to Whiteley. There may be an increase in travel time for those living in the Fareham part of The Henry Cort Community College catchment which is proposed to be become a shared catchment area between Fareham Academy and Cams Hill Academy. Students whose journey to school becomes greater than the statutory walking distance (3 miles) as a result of this change, may be entitled to school transport assistance as described in the **School Transport Policy (2024)**.

Although there would be short-term school transport costs associated with some year groups travelling from Fareham to the new North Whiteley Secondary School site, this would be offset against those students who are currently receiving transport assistance to travel from Whiteley to Fareham who would no longer qualify.

The revenue implications for both the County Council and individual schools are dependent on a range of factors including the final agreed approach, any transitional arrangements, and the actual impact on student destination. There is a financial risk to be managed during the transitional period due to fluctuations in student / staff numbers. If The Henry Cort Community College were to re-locate to the North Whiteley site and this results in a short-term split site arrangement, then additional funding would be provided in acknowledgement of anticipated additional costs associated with managing the extra site. Additional funding is provided to eligible split site schools through the DfE's national funding formula with the value determined using a prescribed methodology.

Likely additional costs would include:

- additional infrastructure and transport costs
- additional administration costs
- extra cost of running two reception areas
- additional costs
- additional IT costs

Should the Henry Cort Community College be relocated, the future of the empty (vacated) site would be fully considered and consulted upon. If option 3 was taken forward the earliest expected date the site would be vacated is September 2029.

The Henry Cort Community College site includes a clubhouse used by Fareham Hockey Club which is subject to a ground lease and associated with an all-weather pitch which is shared with the school. Further work is needed to understand the implications of this. Other community use would be assessed, and a plan agreed to manage any potential closures of such, working with key stakeholders, should a relocation of the school be approved.

Other options considered but not being taken forward at this time:

Due to the location of the M27 running between Whiteley and Fareham, the cost of travel and the environmental impact, an alternative option of expansion of The Henry Cort Community College on its current site to meet growing demand from Whiteley is not considered viable.

Conclusion

Next steps

This initial consultation will run from Thursday 28 March 2024 until 11.59pm on Friday 31 May 2024.

Once the consultation has closed, Hampshire County Council Officers will review all comments and a report setting-out the consultation will then be taken to the Executive Lead Member for Children's Services Decision Day in October 2024. The Executive Lead Member for Children's Services will then decide which, if any, of the options should be taken forward to the statutory consultation stage.

If approved, a statutory Public Notice outlining the decision would be published on the **public notice portal** for a period of four weeks during which representations can be made to the Local Authority.

Any changes to catchment areas would then be subject to a further formal consultation process as detailed within the relevant proposals.

Appendix 1: Glossary

Term	Description
Academy	Academies receive funding directly from the government and are run by an academy trust. They have more control over how they do things than community / maintained schools run directly by the Local Authority. This includes the determination of admission arrangements, which catchment areas and linked school are a part of.
Catchment Area	A school catchment area is the geographic area from which children may be afforded priority for admission to a particular school. A catchment area is part of the school's admissions arrangements and must therefore be consulted upon, determined and published in the same way as other admission arrangements.
Community School or Maintained School	These are wholly owned and maintained by Local Authorities.
Department for Education	The Department for Education is responsible for children's services and education, including early years, schools, higher and further education policy, apprenticeships and wider skills in England. DfE is a ministerial department, supported by 18 agencies and public bodies.
Developer Contributions	Developer contributions are payments made by developers to a local authority for the provision of public infrastructure. The contributions allow Local Authorities (LAs) to provide public amenities and services to meet the increased demands created by the new development. These can include payments for education and highways improvements. Hampshire County Council guidance for developer contributions for education can be found here: School Organisation and Strategic Development .
Executive Lead Member for Children's Services (ELMCS)	Each executive member on the Cabinet has their own portfolio, and they are responsible and publicly accountable for decisions made on the council services that are within their portfolio. Committee details – Executive Lead Member for Children's Services Decision Day & Executive Member for Education Decision Day

Forecast	The reception year intake is estimated using Small Area Population Forecasts (SAPF) of 4-year-olds produced by Hampshire County Council's (HCC) Hampshire 2050 Directorate. Other year groups are based on the number of students on roll from the January School Census. The expected student yield from new housing is also produced by Hampshire County Council.
Form of Entry	This tells you how many classes there are in each year group.
LEA	Local Education Authority
Linked Schools	Linked schools are one of the criteria used to determine priority for admission to certain schools. For example, an infant school will be linked to one or more junior schools and junior and primary schools will be linked to one or more secondary schools.
Number on Roll	The number of students registered at a school is called the Number on Roll (NOR). Numbers will vary as students leave schools and other students join the school. Therefore, the number of students is counted at fixed times each year through a census near the start of each term.
Own Admissions Authority	For foundation and voluntary aided schools, the admissions authority is the governing body. For academies, the admissions authority is the Academy Trust.
Published Admission Number	The Published Admission Number (PAN) is the number of school places that the admission authority must offer in each relevant age group in a school for which it is the admissions authority. Admission numbers are part of the school's admission arrangements.

Regional Directors	Regional directors work locally across children’s social care, Special Educational Needs and Disabilities (SEND), schools and area-based programmes to improve outcomes for children, families and learners. Regional directors act on behalf of the Secretary of State for Education. Regional Department for Education (DfE) Directors
School Place Planning Area	Schools are grouped into Planning Areas – this is based upon historic student movements between the school catchments within a local area.
Statutory	Statutory guidance sets out what schools and local authorities must do to comply with the law. In this document, this is applicable to both statutory and non-statutory consultation and statutory processes.

Useful Links

[1] [Establishing a new academy: the free school presumption route](#)

[2] [Opening and closing maintained schools](#)

[3] [Making significant changes \(‘prescribed alterations’\) to maintained schools](#)

[4] [Hampshire schools’ admission arrangements](#)

[School Places Plan 2024 to 2028](#)

Appendix 2: Contextual data relating to school forecasting and school place planning in the Fareham North and West, and Fareham Central and East planning areas

Table 1 below shows the local secondary schools which are the most likely to be impacted by a new North Whiteley Secondary School, the total number of students in each school in autumn 2023, and the percentage of those children that live within each school’s catchment area. This shows that 44% of families are choosing the schools in the Fareham North and West and the Fareham Central and East planning areas despite not living in the catchment areas. There is a significant influx of families applying for secondary school places in Fareham from Gosport and Portsmouth and movement between schools within the borough. However overall, there are enough secondary school places between the Fareham schools combined to serve the catchment demand, if you exclude the growing demand from Whiteley.

Table 1: Numbers on Roll autumn 2023/24 and percentage from catchment

School Attended	Total number of students attending	Number of students attending from within catchment	%
Brookfield Community School	1,821	1,707	94%
The Henry Cort Community College	889	720	81%
Fareham Academy	887	482	54%
Crofton School	1,100	548	50%
Cams Hill School	1,269	559	44%
Portchester Community School	704	389	55%
Fareham total	6,670	4,405	66%

Table 2 shows which schools the children living in Whiteley and North Whiteley are currently attending. This helps us to consider where the new secondary school students may join from, and which secondary schools may be impacted by the creation of the new North Whiteley Secondary School. For example, Whiteley residents make up 292 of the 720 catchment children on roll at The Henry Cort College so removing Whiteley from the catchment area when the new school opens, as outlined in options 1 and 2, is likely to have an impact.

The table does not name schools where less than 5 students with a Whiteley address are attending, but they are included within the total. Not all children will choose to attend a catchment school and therefore the list includes other local schools which are outside of the Fareham North and West, and Fareham Central and East planning area.

Table 2: Schools attended by children living in Whiteley and North Whiteley.

Primary age	
School name	Total
Bishop's Waltham Junior School	6
Botley Church Of England (Controlled) Primary School	11
Cornerstone VA Primary School	268
Curdridge Primary School	9
Hook-With-Warsash Church Of England Academy	7
Locks Heath Junior School	12
Park Gate Primary School	13
Sarisbury Church Of England Junior School	11
St Anthony's Catholic Primary School	25
St John The Baptist Church Of England Primary School, Titchfield Common	16
Whiteley Primary School	554
Total primary age	932
Secondary age	
Brookfield Community School	57
Fareham Academy	12
Swanmore College	150
The Henry Cort Community College	292
Wildern School	15
Total secondary age	526
Total	1,555

Table 3: Total number of pupils living in each catchment area.

School Name	PAN	2019-2020	2020-2021	2021-2022	2022-2023	2023-2024	2024-2025	2025-2026	2026-2027	2027-2028	2028-2029	2029-2030	2030-2031
		Year 11	Year 10	Year 9	Year 8	Year 7	Year 6	Year 5	Year 4	Year 3	Year 2	Year 1	Year R
Fareham North/West						Fareham North/West							
Brookfield Community School	360	356	368	362	359	394	362	430	394	376	359	355	339
The Henry Cort Community College excluding Whiteley		261	251	240	274	273	312	259	324	153	147	166	149
North Whiteley Secondary School	180	0	0	0	0	0	0	0	0	138	156	133	143
Total	540	617	619	602	633	667	674	689	718	667	662	654	631
Fareham Central/East						Fareham Central/East							
Fareham Academy	180	145	171	166	162	165	163	166	153	169	163	157	148
Crofton School	222	107	111	129	116	123	126	103	117	119	110	105	91
Cams Hill School	250	140	126	125	139	163	123	156	148	146	150	146	118
Portchester Community School	168	129	135	118	149	135	156	120	129	144	120	117	106
Total	820	521	543	538	566	586	568	545	547	578	543	525	463
Fareham Borough Total	1,360	1,138	1,162	1,140	1,199	1,253	1,242	1,234	1,265	1,245	1,205	1,179	1,094

The blue total column is the number of year 7 children in the academic year shown. The year group that those children are currently in is also shown. For example, in 2019-2020 there were a total of 617 year 7 children in the Fareham North and West planning area, and those children are now in school year 11.

Table 3 shows the total number of students living in the catchment area of each school within the Fareham North and West, and the Fareham Central and East planning areas, together with the Published Admission Number (PAN) of places available per year group.

This helps us to consider the demand for places within catchment and planning areas.

The PAN column shows that there are 1,360 places available per year group across the two planning areas and provides a comparison to the numbers of children in each year group from the current year R to year 11.

In September 2027, across the two Fareham planning areas, there would be 1,245 children living in catchment and 1,360 places available.

Within the Fareham Central/East planning area, there are 578 children living in catchment compared to 820 available places.

Opening a new school in Whiteley puts the available places in the right location to meet local demand.

The long-term demand for secondary places within the Whiteley area will be between 6 and 8 forms of entry (900 – 1,200 places) which supports a new school to serve the development.

Table 4 shows the number of students that would be included within a shared catchment between Fareham Academy and Cams Hill School. This is provided as context for the proposed options 2 and 3 and shows that while the new shared catchment would be oversubscribed in 2027/28, by 2030/31 it is predicted that there would be surplus places, in line with the falling numbers on roll within the primary schools. It is possible that additional places will be needed in the short term to reflect demand through the admissions process until the number of students from linked schools reduces in line with forecasts and push-back of out of area students takes effect.

Table 4: Catchment numbers only – shared between Fareham Academy and Cams Hill School.

School Name	PAN	2019-2020	2020-2021	2021-2022	2022-2023	2023-2024	2024-2025	2025-2026	2026-2027	2027-2028	2028-2029	2029-2030	2030-2031
		Year 11	Year 10	Year 9	Year 8	Year 7	Year 6	Year 5	Year 4	Year 3	Year 2	Year 1	Year R
Brookfield Community School	360	356	368	362	359	394	362	430	394	376	359	355	339
Brookfield Community School	360	356	368	362	359	394	362	430	394	376	359	355	339
										-16	1	5	21
North Whiteley Secondary School	180	0	0	0	0	0	0	0	0	138	156	133	143
North Whiteley Secondary School	180	0	0	0	0	0	0	0	0	138	156	133	143
										42	24	47	37
The Henry Cort Community College excluding Whiteley		261	251	240	274	273	312	259	324	153	147	166	149
Fareham Academy	180	145	171	166	162	165	163	166	153	169	163	157	148
Cams Hill School	250	140	126	125	139	163	123	156	148	146	150	146	118
Shared Area	430	546	548	531	575	601	598	581	625	468	460	469	415
										-38	-30	-39	15
Crofton School	222	107	111	129	116	123	126	103	117	119	110	105	91
Portchester Community School	168	129	135	118	149	135	156	120	129	144	120	117	106
Other Schools in Borough	390	236	246	247	265	258	282	223	246	263	230	222	197
Fareham Borough Total	1,360	1,138	1,162	1,140	1,199	1,253	1,242	1,234	1,265	1,245	1,205	1,179	1,094

Table 5 shows the secondary places available per year group (Sec PAN) compared to the places per year group for the linked primary school (Pri PAN). As with table 4, it includes a shared catchment between Fareham Academy and Cams Hill School. This is to show how many places per year would be available through a shared area catchment area (as proposed in both options 2 and 3) compared to the places per year group at the linked primary schools.

Table 5: Linked primary school numbers: shared between Fareham Academy and Cams Hill School.

School name	Sec PAN	Pri PAN	Difference
Brookfield Community School	360	398	-38
Brookfield Community School	360	398	-38
North Whiteley Secondary School	180	120	60
North Whiteley Secondary School	180	120	60
The Henry Cort Community College excluding Whiteley		124	-124
Fareham Academy	180	173	7
Cams Hill School	250	195	55
Shared Area	430	492	-62
Crofton School	222	158	64
Portchester Community School	168	210	-42
St Anthony's Catholic Voluntary Aided Primary School*		30	-30
Other Schools in Borough	390	398	-8
Fareham Borough Total	1,360	1,408	-48

**Note: St Anthony's Catholic School is within Brookfield Schools catchment area but is not linked to any Hampshire Secondary school. Children attending St Anthony's may go on to attend Catholic secondaries in Southampton and Portsmouth unitary authorities.*

**Note: Cornerstone CE Primary PAN is officially 30, as reflected in the data here, but the school has taken 60 in recent years which is set to continue.*

