

**The Hampshire 2050 Directorate came into being on 1 January 2023 with the aim of leading the County Council's work to make Hampshire an even better place to live, play, work, visit and do business.**

Borne from the Hampshire 2050 Commission of Inquiry, whose work concluded in October 2019, the new directorate will work with other authority partners and key organisations and be responsible for developing the strategies that will shape and safeguard the futures of both Hampshire as a place and County Council services for the county's residents.

Using available data, undertaking further **research and consultation** where necessary, the Hampshire 2050 Directorate will support County Council services to plan for what will need to be delivered in the future, and identify the challenges, solutions and opportunities for innovation.

Ensuring that the right strategies are in place to guide decisions about services, resources and infrastructure will be at the heart of the directorate's work in contributing to the continuing prosperity of Hampshire to 2050, improving residents' quality of life and protecting and enhancing the county's unique quality of place.

## Hampshire 2050 Directorate will be focused on the following priority areas:

### Partnerships and collaboration



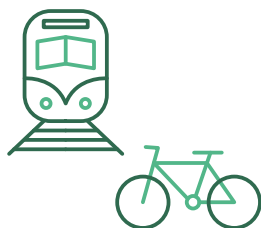
**Working strategically with partners** in both the private and public sector – such as borough and district councils, enterprise partnerships, the police and NHS – to collaboratively and influentially shape Hampshire as a place.

### Population and society



Understanding the changing population and living patterns to improve **health, social care, education, housing and employment.**

### Transport and travel



Ensuring that Hampshire has the right infrastructure in place to meet changes in the way people travel for local and longer journeys, **supporting residents in being able to walk, cycle or travel by public transport** more easily, improving our air quality and meeting our net-zero ambitions.

### Digital infrastructure



Negotiating to keep Hampshire connected, making sure through the County Council's Superfast Broadband programme, that Hampshire is well served with digital infrastructure to make sure residents and business have **access to effective and efficient electronic communications** locally, nationally and internationally.

# Hampshire 2050 Directorate will be focused on the following priority areas:

## Economy

Firmly placing Hampshire on the map as being open for business. Working with businesses to help them to thrive and create job opportunities, as well as attracting local, national and international investment to further **secure Hampshire's economic prosperity and employment security for Hampshire's residents.**

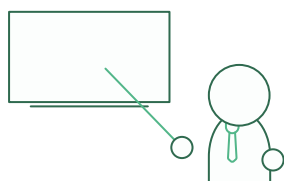


## Mineral and waste planning

Hampshire County Council is one of the five minerals and waste planning authorities in the country. Collectively – while maintaining communities, protecting the local environment and addressing the impacts of climate change – they are responsible for **ensuring there is the correct waste infrastructure** in place to manage the **disposal of household and commercial waste**; as well as providing for a steady and adequate supply of minerals such as sand, gravel and brickmaking clay to build houses, schools, hospitals and roads.

## Environment

Planning to ensure Hampshire's natural environment can be **maintained and protected in the face of a changing climate** while still meeting the needs of and being accessible to those living and working in the county.

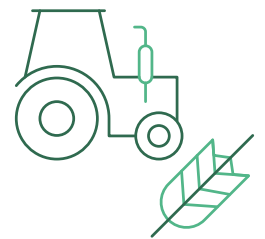


## Lifestyle

Working to ensure Hampshire residents have **opportunities to enhance their quality of life** in their leisure time including through delivery of infrastructure such as walking and cycling routes, to support active lifestyles as well as shaping our cultural assets of the future.

## Rural Hampshire

Identifying how **economic, social, technological and environmental changes** are likely to affect rural communities and identifying the potential for rejuvenation of the rural economy and rural communities.



## Climate change

Working towards a well-adapted and resilient Hampshire by **ensuring climate change considerations and measures are incorporated in service delivery** as well as the use of resources in the construction and maintenance of infrastructure. Alongside this, the directorate will work with partners, residents and communities to enable them to implement their own climate change prevention and resilience activities.

## Work and skills

Identifying skills gaps and preparing for future skills need by working to support learning and skills training in the county and **increase opportunities for employment.**