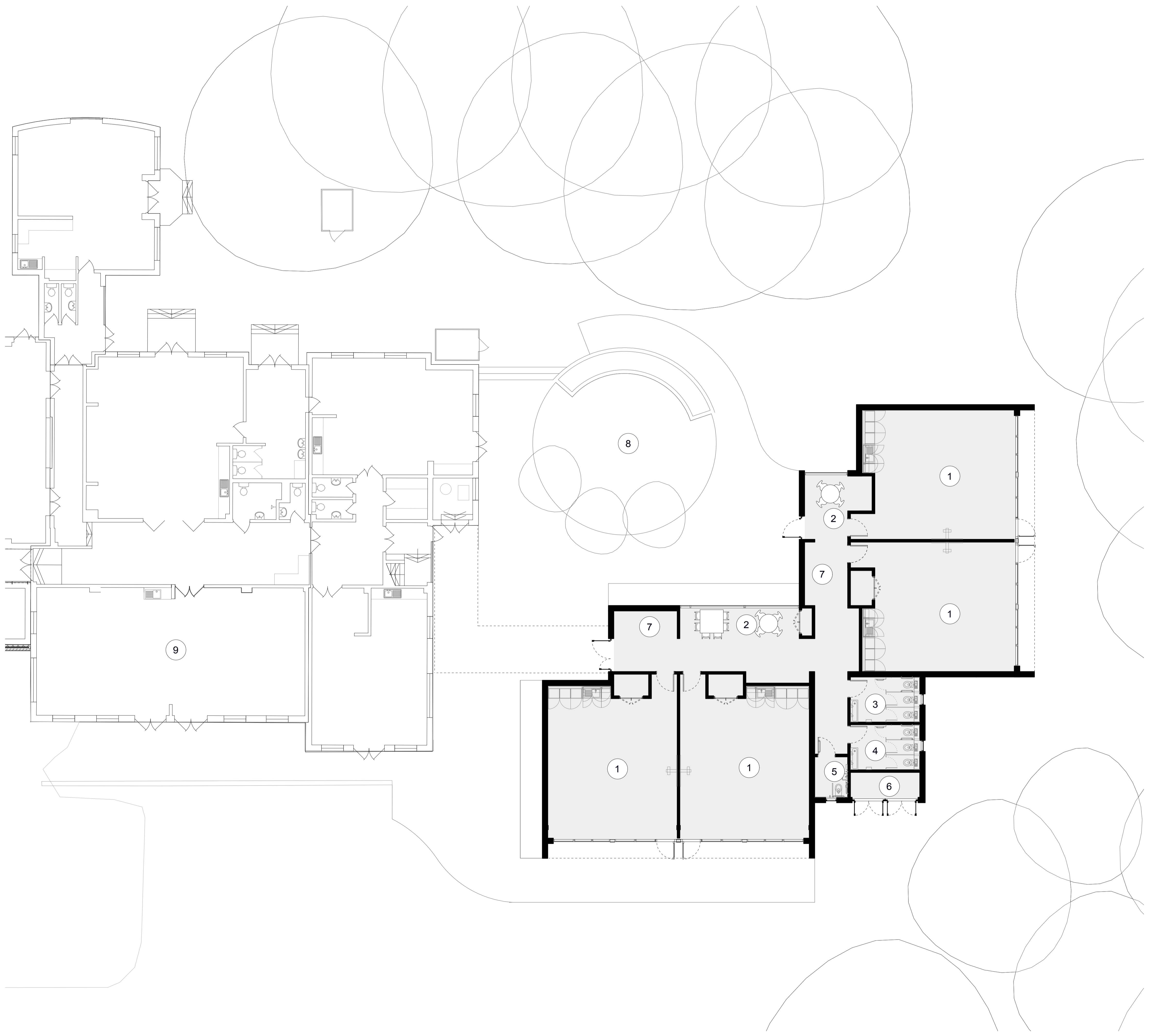


**Four Marks Primary School**

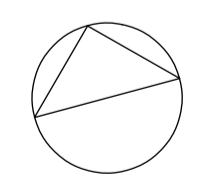
**Expansion from 1.5FE to 2FE Primary (420 place)**

**Proposed Ground Floor**



- ① Classroom
- ② Group Area
- ③ Female WC
- ④ Male WC
- ⑤ Accessible WC
- ⑥ Plant
- ⑦ Cloaks
- ⑧ External Courtyard
- ⑨ Studio

North



1:100 @ A1

**P111628-A122**

June 2018