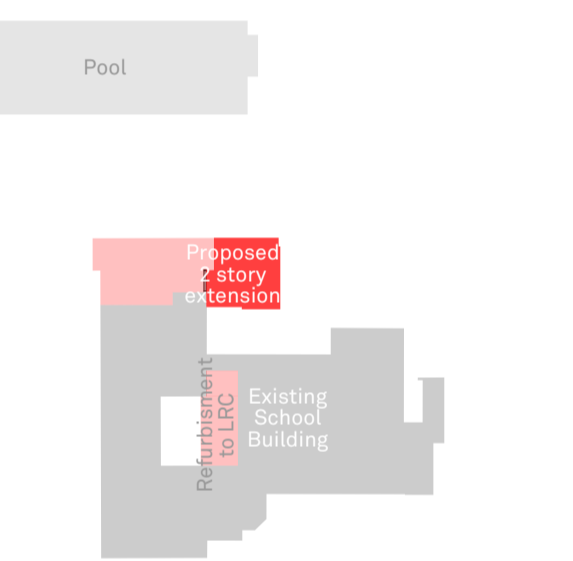
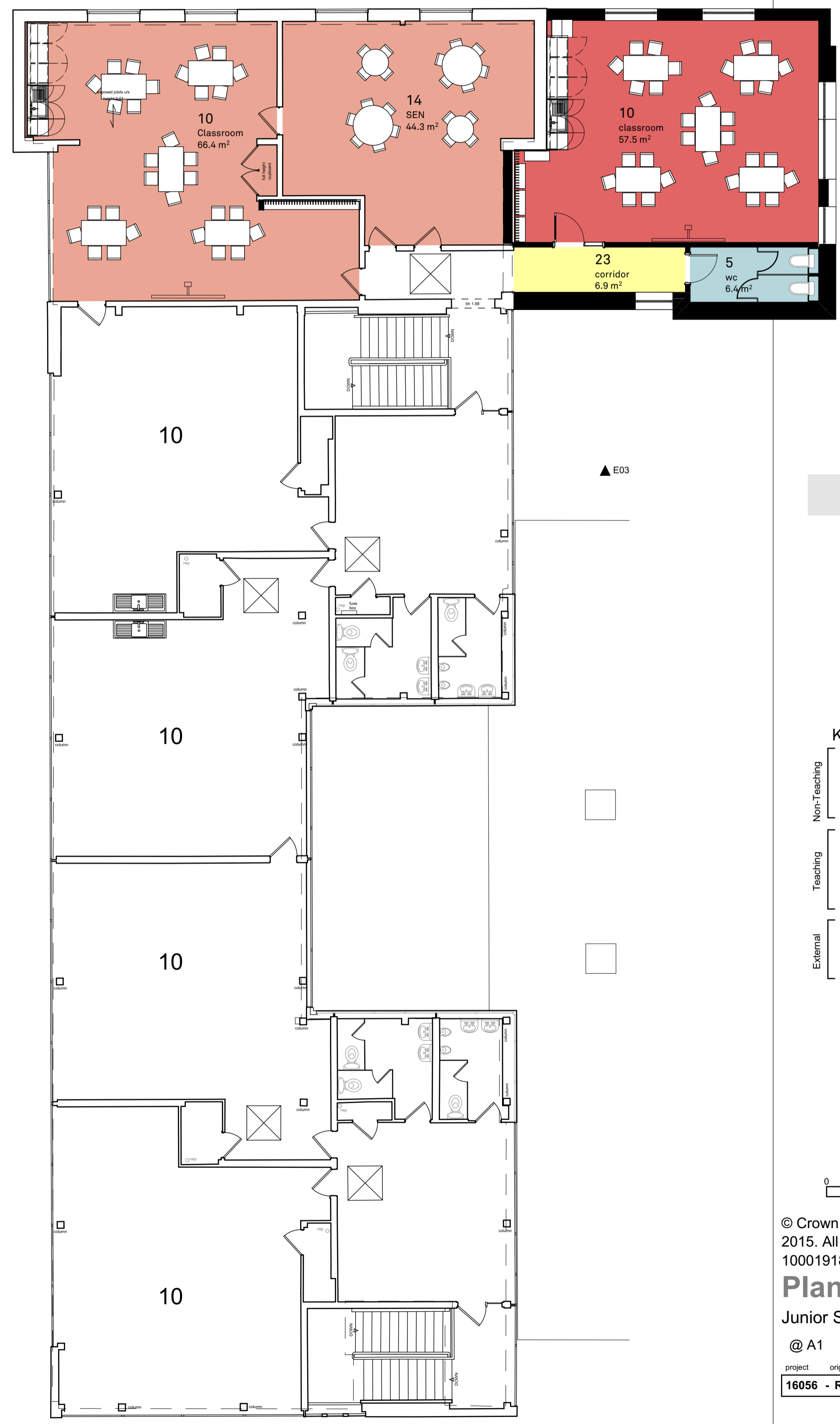
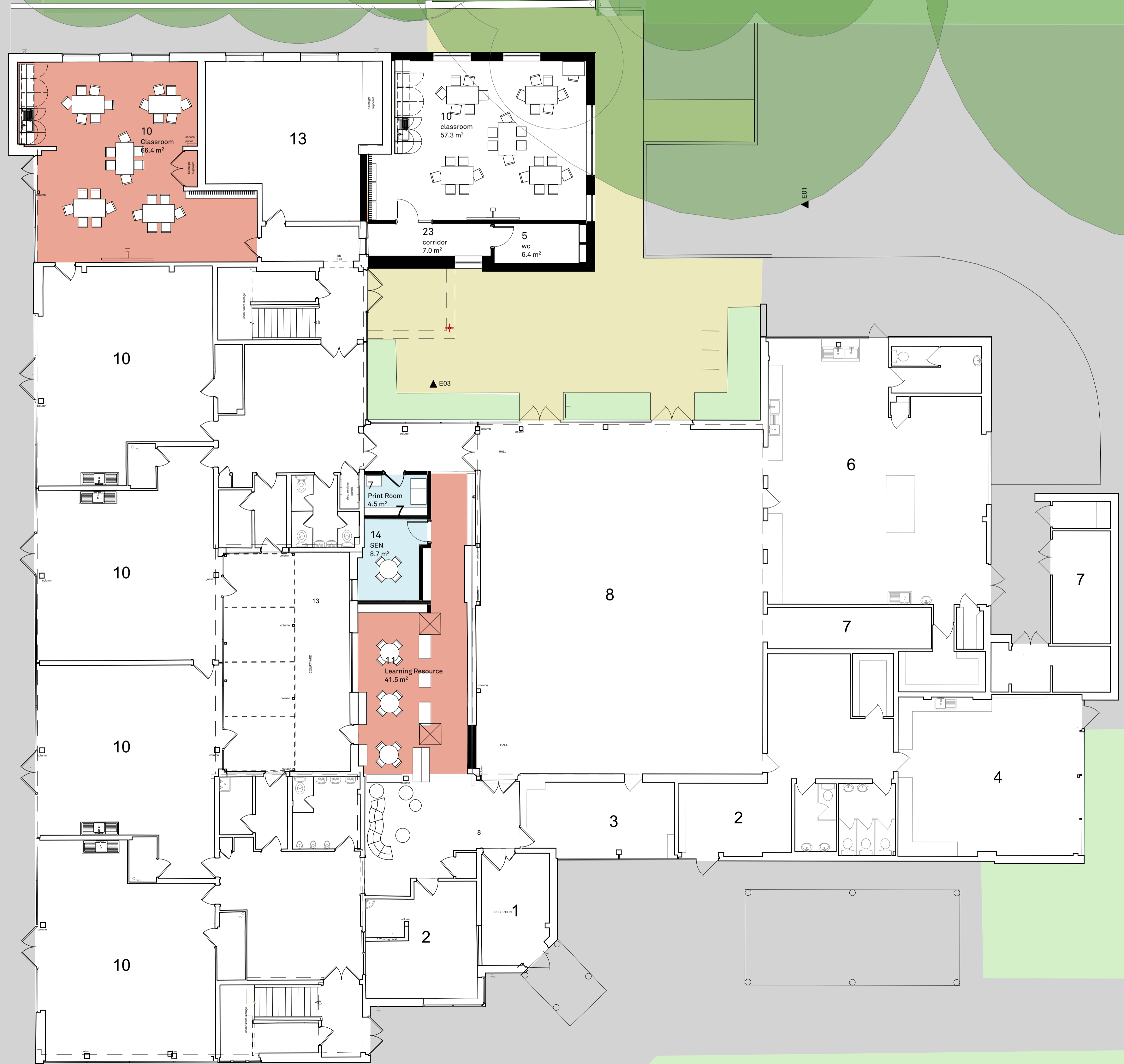


Bishops Waltham Infant and Junior School

Expansion from 2FE to 3FE Infant School

Expansion from 2FE to 3FE Junior School



- Key**
- 1. Reception & Waiting
 - 2. General Office
 - 3. Head Teacher
 - 4. Staff Room
 - 5. WCs
 - 6. Kitchen & Servery
 - 7. Plant & Non-teaching Stores
 - 8. Hall
 - 9. Classrooms - Reception
 - 10. Classrooms - Key Stage 1&2
 - 11. Learning Resource / Library
 - 12. Specialist Practical
 - 13. Studio/ Small Hall/ Music & Drama
 - 14. Small Group Room (SEN)
 - 15. ICT Suite
 - 16. Car Park
 - 17. Games Court
 - 18. Hard Play
 - 19. Soft Play
 - 20. Habitat
 - 21. Pitch

- General Teaching - New Build
- General Teaching - Refurb.
- Non-Teaching - New Build
- Non-Teaching - Refurb.
- Circulation
- ▶ Existing Pedestrian Access
- ▶ Existing Vehicular Access
- Site Boundary

0 5 M

© Crown copyright and database rights 2015. All rights reserved. HCC 100019180.

Planning

Junior School Proposed Floor Plans

@ A1

project	originator	volume	level	type	role	number
16056	RFT	0B	GF	DR	A	0103

Proposed First Floor Plan

Proposed Ground Floor Plan