

Appendix 3 – Background Borough and Transport Network Context

Figure 1: Settlements within Eastleigh	4
Figure 2: Map showing the Eastleigh Borough and Neighbouring Districts	5
Figure 3: Key road and rail links in Eastleigh Borough	10
Figure 4: AM peak Congestion levels across Eastleigh Borough	11
Figure 5: Air Quality Management Areas.....	12
Figure 6: Rail Stations and Railways.....	13
Figure 7: Southampton Travel to Work Area	14
Figure 8: Public Rights of Way	16
Figure 9: Eastleigh LCWIP Routes.....	17
Figure 10: Pedestrian Personal Injury Collisions (2016-2022)	18
Figure 11: Cycle Personal Injury Collisions (2016-2022).....	18

Characteristics of the Borough

The Borough of Eastleigh

Eastleigh borough covers about 82 sq. km.¹ and is home to about 132,000 people². The largest town and administrative centre of the Borough is the town of Eastleigh which has a population of about 31,000. The other settlements with a population of more than 5,000 are:

Hedge End	(about 22,000)
Chandler's Ford	(about 18,000)
Fair Oak and Horton Heath	(about 11,000)
Bishopstoke	(about 9,000)
Netley	(about 8,000)
West End	(about 7,000)
Hamble-le-Rice	(about 6,000)
Bursledon	(about 6,000)
Botley	(about 5,000)

¹ Source: Eastleigh Borough Council website

² Source: UK Office for National Statistics (ONS) data for mid-2020

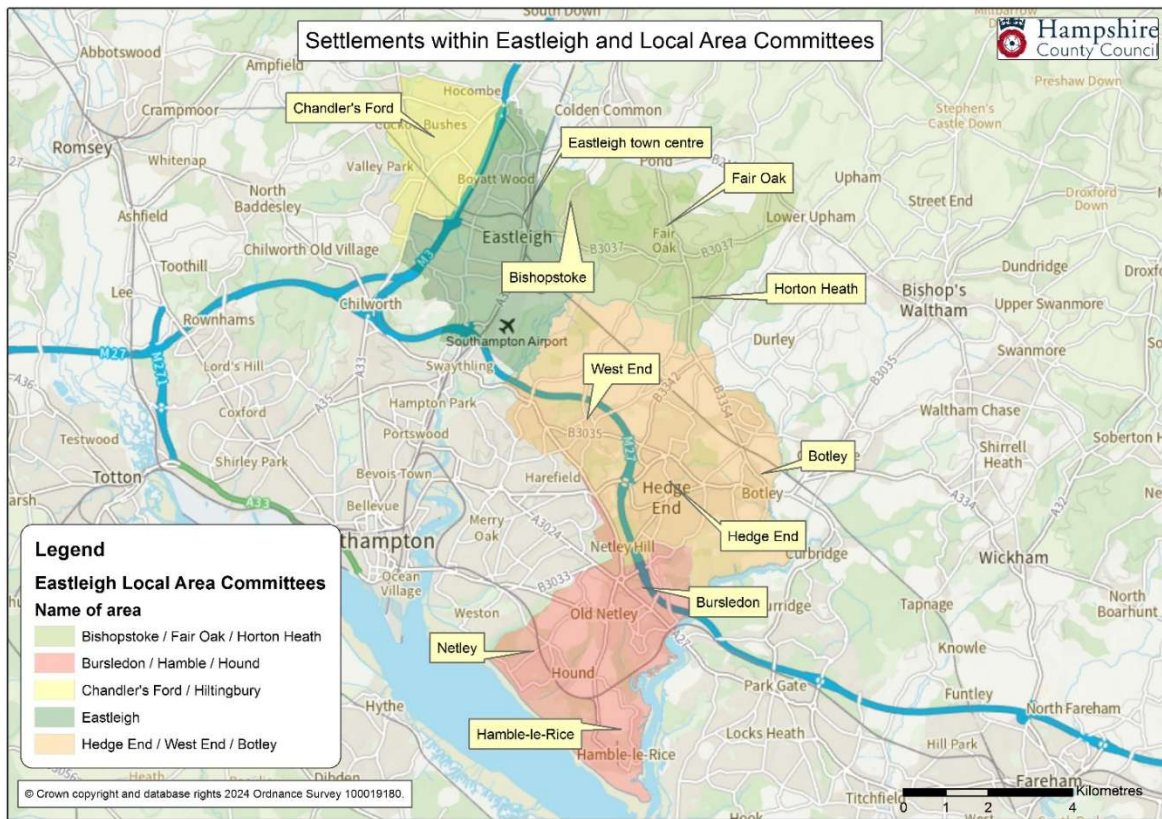


Figure 1: Settlements within Eastleigh

The Borough's proximity to the City of Southampton (population about 264,000) surrounding it on the north and east sides heavily influencing its transport patterns. Chandler's Ford and Eastleigh are to the north of the city, Bishopstoke, Fair Oak and Horton Heath are to the north-east, and Hedge End and Botley are to the east. West End is contiguous with the north-eastern suburbs of Southampton. To the south-east, the coastal villages of Netley and Hamble-le-Rice are on Southampton Water, and Bursledon lies on the River Hamble.

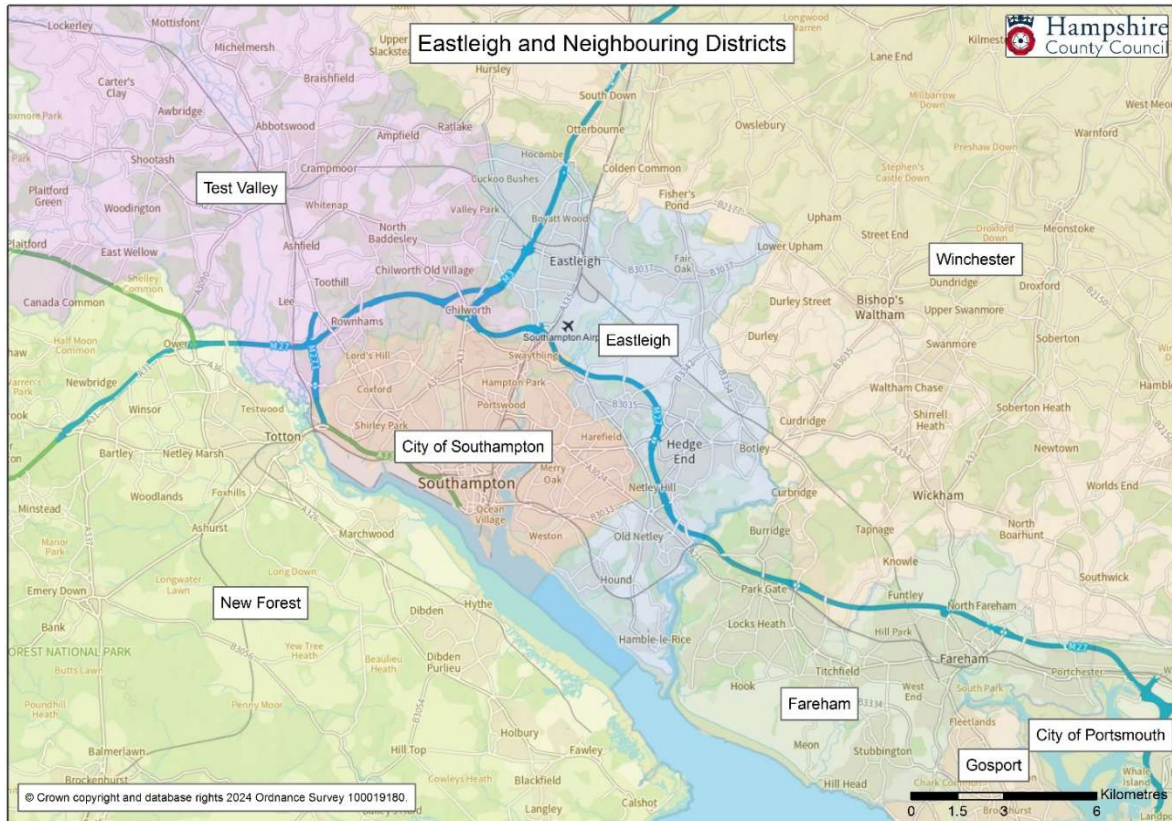


Figure 2: Map showing the Eastleigh Borough and Neighbouring Districts

Most of the Borough is urban but there are areas of low density semi-rural communities, and settlements are generally separated by areas of open countryside. These rural areas are important, both for the physical separation they provide between the main settlements and for their biodiversity and landscape characteristics.

Eastleigh has productivity rates above the national and Solent area averages but recent decreases in the number of businesses, coupled with new development increasing the population of the Borough, has led to business density in the Borough falling below the South-East average.

Neighbouring areas

The Borough's most important neighbours are Southampton and Winchester. Southampton is part of the *ceremonial* county of Hampshire, but it is administered by a unitary authority (Southampton City Council) which is separate from both the Borough of Eastleigh and the county of Hampshire. Winchester (population about 125,000) is the County City of Hampshire, lies about 10 km north of Eastleigh in Winchester District. The size and proximity of both cities means that they have a significant impact on many aspects of life in the Borough, including transport.

The Borough adjoins Test Valley Borough to the north-west and Fareham Borough to the east. Beyond Fareham is the city of Portsmouth (population about 208,000). To the north-east Eastleigh Borough has a short border with the South Downs National Park.

Principal settlements

Eastleigh

Eastleigh developed as a railway town in the 19th century and experienced significant suburban development and modernisation throughout the 20th century. The older part of the town is characterised by a grid pattern of narrow streets and terraced houses, into which the traditional shopping centre has gradually expanded over the years, including a large supermarket and other facilities. A purpose-built shopping centre, the Swan Centre provides a wide range of shopping facilities, a multi-screen cinema and a leisure centre and is an important destination within the Borough. Eastleigh has a railway station and a bus station, both close to the town centre.



Chandler's Ford



Chandler's Ford was originally a small village but is now a very large residential suburb. It has a centrally located railway station and is separated from Eastleigh by the M3 motorway. It is located about 5 miles north-east of Southampton and 2 miles north-west of Eastleigh town centre and is regarded as a popular place to live for families and people working in Southampton and Winchester. It is known for its good schools and has a range of community facilities, including shops, cafes, restaurants and pubs, parks, a

library, community centre, leisure centre and swimming pool.

Bishopstoke

The village of Bishopstoke lies just east of Eastleigh town centre, separated from it by the River Itchen and the Southampton – Winchester railway line. It has a long history, dating back to the Saxon period. Today, it is a largely residential area, with a mix of new housing developments and older properties. It has a range of amenities, including shops, pubs and restaurants and a 12th century church. Bishopstoke is served by Eastleigh Railway Station.



Fair Oak and Horton Heath



Fair Oak and Horton Heath are neighbouring villages located to the east of Eastleigh town that are mainly residential in character and regarded as popular places to live in. Fair Oak is the larger village with a range of local shops, a post office, restaurants and pubs, as well as schools, churches and sports clubs. Horton Heath is a relatively new settlement. It experienced significant development in the late 20th century, with new housing estates being built around a former

wartime airfield. The nearby Horton Heath nature reserve provides valuable green space for local people.

Botley

Botley lies just east of Hedge End and is a commuter village serving Southampton and Portsmouth. It retains a great deal of its historic character, with local shops, a library, post office, pubs and restaurants. The nearby 16th century Botley Mills were converted in the 1990s into a new shopping and leisure destination, with apartments, shops, restaurants and cafés. Botley is served by a railway station on the Eastleigh to Portsmouth line, located just outside the Borough around 800m from the village centre.



Hedge End



Hedge End is a large residential suburb on the western side of Southampton, separated from the city by the M27 motorway. It is home to several large retail parks and also has a range of smaller shops, pubs and cafés and local amenities, predominantly located along the main through streets. It is regarded as a desirable residential area, with good schools and easy access to both Southampton and other parts of Eastleigh Borough. Hedge End is served by a railway station on the

Eastleigh to Portsmouth line, located to the rear of the northern-most residential area, approximately 2km from the village centre.

West End

West End is a large residential suburb lying to the west of Hedge End and separated from it by the M27 motorway. It is home to the Hampshire County Cricket Club ground (known currently as the Utilita Bowl) and its nearby hotel and golf course. To the north it is bordered by a skate park and the Itchen Valley Country Park which covers 440 acres. The main street through the village has a range of smaller shops, a supermarket, a post office, a pharmacy and several restaurants. Due to its proximity to Southampton, it is regarded as a desirable residential area.



Bursledon



Bursledon is primarily a residential area, with a mix of traditional and modern houses. It lies on the western bank of the River Hamble and is a popular destination for sailing, with a marina and boatyards. The village has a small high street with a few local shops along with several pubs and restaurants. Bursledon is served by a railway station on the Southampton to Portsmouth line, located next to the river approximately 1km from the village centre.

Netley and Hamble-le-Rice

Netley and Hamble-le-Rice are coastal villages located on Southampton water. Hamble-le-Rice, the smaller of the two, lies on the west bank of the River Hamble. The 13th century ruins of Netley Abbey and the Royal Victoria Country Park at Netley are popular local visitor attractions.

Hamble-le-Rice is an historic village dating back to the 11th century. Once a major centre for shipbuilding, it is now home to several marinas and yacht clubs, making it a popular leisure destination.



Netley and Hamble have railway stations on the Southampton to Portsmouth line. Whilst Netley station is well located, Hamble station is over 1.5km north-west of Hamble village centre.

The rural areas

The Borough also contains rural and undeveloped areas. These form important buffer areas between the towns and villages with farmland, open fields and woodland areas. There are several parks and nature reserves, such as Lakeside Country Park (60 acres, near Fair Oak), Itchen Valley Country Park (440 acres) and Marwell Wildlife (a 140 acre zoological garden at Colden Common). More generally, the coastline of Southampton Water and the Hamble River estuary attract a variety of recreational activities – walking, cycling, sailing, fishing and water sports.



Transport and travel in Eastleigh Borough

The Borough's transport system includes:

- The infrastructure (roads, railways, footpaths, bus stops etc.) that enable travel to take place
- The modes of transport (walking, wheeling, cycling, car, bus, train etc.) that people choose to use
- The services (bus, train, taxi etc.) that are available
- The interchange facilities that enable people to use more than one mode or service to travel
- The information that tells people what infrastructure, services, and facilities are available

Many types of infrastructure (e.g. roads) are used by more than one mode, and some modes use more than one type of infrastructure. Thus, for example, the practical cycle network does not just comprise purpose-built cycle tracks, cycle lanes and facilities such as cycle crossings; it also includes all the types of roads along which people may cycle. The practical driving network includes motorways, strategic and local roads and streets as well as car parking (on and off street, public and private). The effective bus network comprises the services that are operated and the roads, junctions, and purpose-built infrastructure (bus stops etc.) that they use.

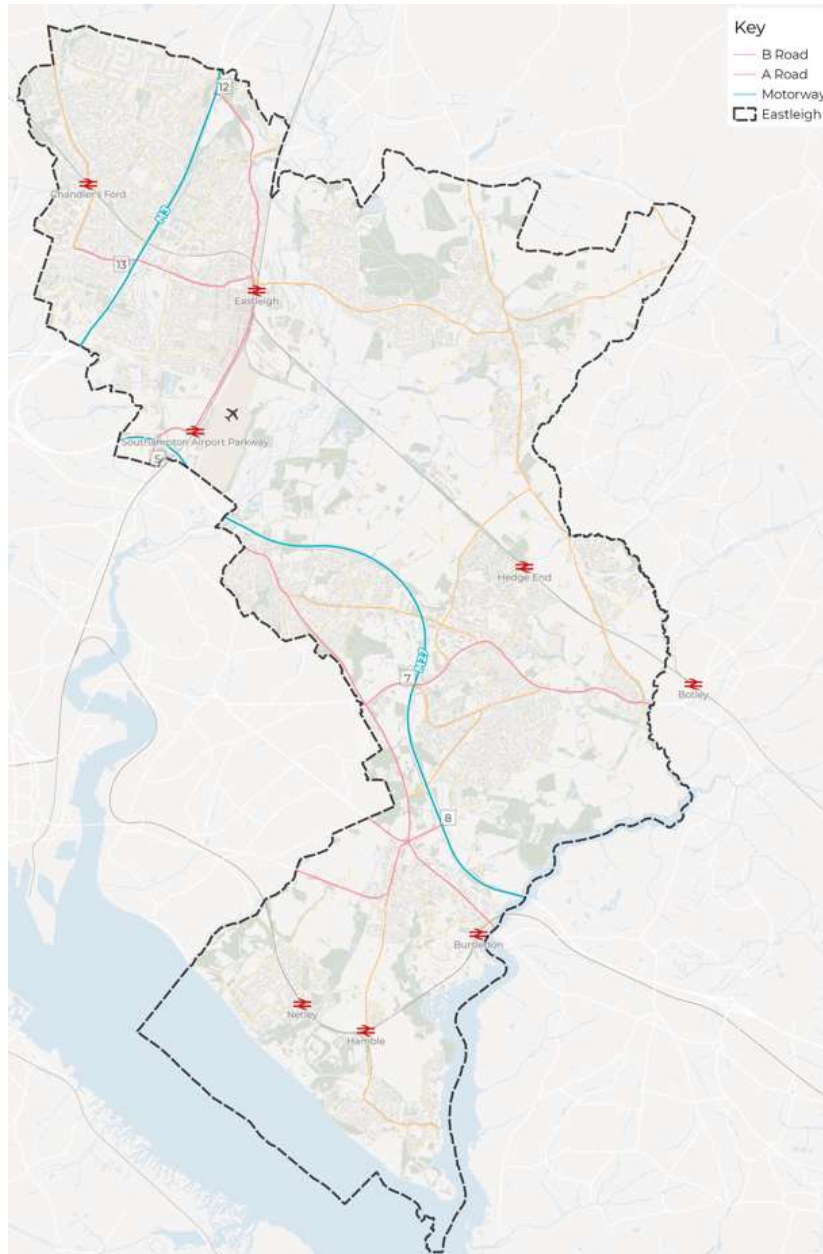


Figure 3: Key road and rail links in Eastleigh Borough

Roads and Parking

Roads

The Borough's Road strategic road network (SRN) comprises the M3 and M27 motorways which form a spine running through, or close to, the Borough. No part of the Borough is more than about 10 km by road from a motorway junction. As well as carrying through traffic, the motorways link people and businesses to key destinations both within the Borough and further away.

The A27 is part of the Major Road Network (MRN) and runs parallel with the M27. A network of single carriageway A and B roads connects the main settlements in the Borough to each other and to the SRN and MRN. These are all single carriageway roads, typically 7.3m wide, with at-grade junctions and frontage access to properties.

highlights congestion levels along short trips in the Eastleigh and Southampton area. Using the Google Maps API, the percentage difference between the driving time during rush hour (leaving at 8 am on a Tuesday) and free flow conditions (1 am on a Sunday) for each origin-destination pair was calculated.

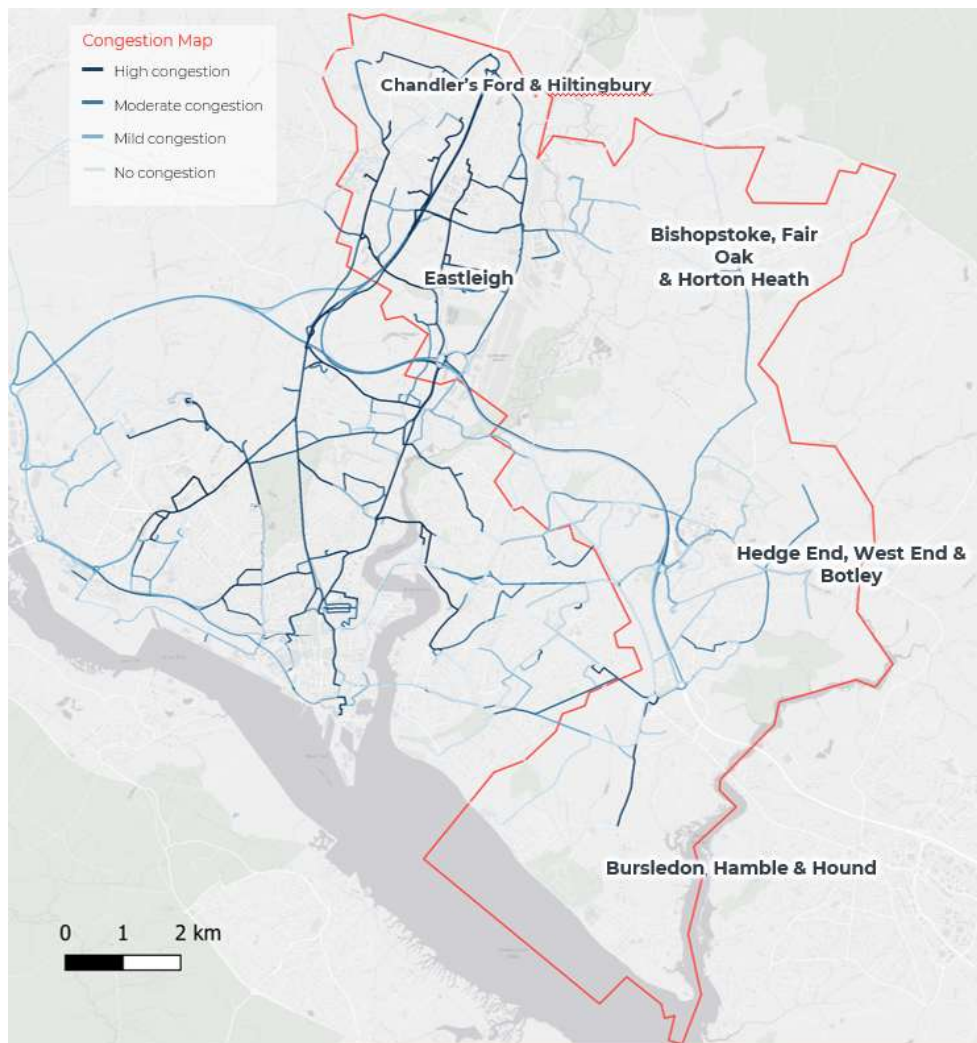


Figure 4: AM peak Congestion levels across Eastleigh Borough

Darker lines on Figure 4 indicate more significant congestion, while lighter lines represent lower levels of congestion. It is worth noting that the M3 and the B3043 leading into Chandler's Ford are particularly affected by congestion, as are the A335 and B3037 which meet in Eastleigh town centre, Chestnut Avenue and Stoneham Lane in Eastleigh, the B3354 and B3342 connecting Fair Oak and Horton Heath to the M3 and the B3397 Hamble Lane.

Across the Borough there is a strong reliance on private motor transport for commuter trips, with Southampton, Winchester, Test Valley and Fareham the key origins and destinations.

Primarily due to road traffic emissions, there are four Air Quality Management Areas (AQMA) for Nitrogen Dioxide located on the A335 in Eastleigh town centre, along the M3 between Junction 12 and Junction 14), along the B3397, A3025 and A27 approaches to Windhover Roundabout and on the A334 in Botley.

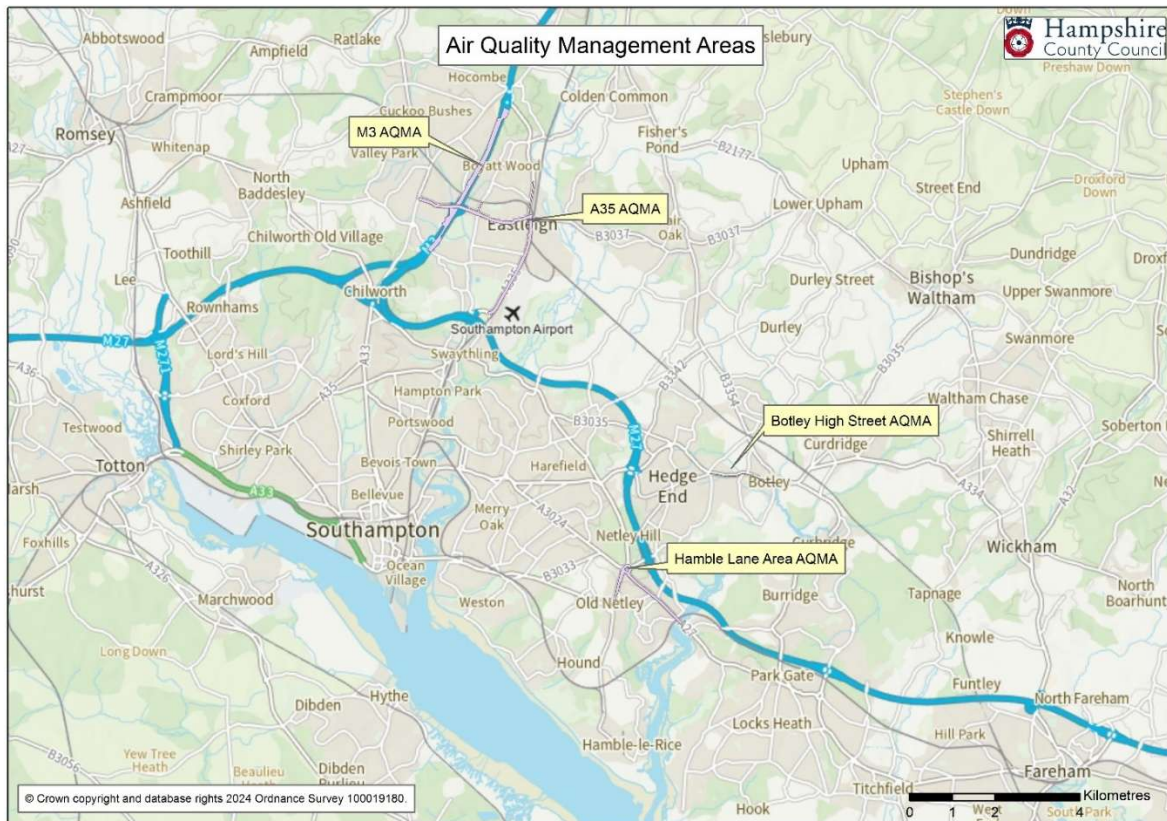


Figure 5: Air Quality Management Areas

Parking

In addition to parking facilities at railway stations and the airport, there are significant amounts of car parking with 1,200 long-stay and 250 short-stay spaces in Eastleigh town centre and over 3,000 publicly available off-street spaces in other places in the Borough.

Rail

The Borough is served by eight railway stations: Eastleigh, Southampton Airport Parkway, Chandler's Ford, Hedge End, Botley (Botley station is located just outside the borough boundary in the City of Winchester District), Bursledon, Netley, and Hamble.

Three railway lines meet at Eastleigh: the South West Main Line (to London Waterloo via Winchester and Southampton), the Eastleigh – Romsey Line, and the Eastleigh – Fareham Line.

In general, the Borough has excellent rail connections with frequent services, including many direct services to key destinations and the wider rail network. This means that rail is likely to be an attractive option for people commuting into London from the Borough, especially from Eastleigh, Southampton Airport Parkway, Hedge End or Botley. Rail also offers convenient services and attractive journey times from these destinations to Winchester and Portsmouth. Portsmouth is also easily reached from Netley, Hamble and Bursledon.

Southampton can be reached easily by train from all stations in the Borough, though this does not necessarily give rail an advantage over other modes for the relatively short distances involved. Chandler's Ford station is less well served than others in the Borough, as most journeys will involve changing trains at Eastleigh. It does however have a direct hourly service to Southampton.

Despite this excellent rail connectivity, rail was used for less than 4% of journeys to work in 2011, falling to 1.3% in 2021 as patronage was badly affected by the COVID-19 pandemic and its recovery has been hampered by repeated rail strikes, a landslip between Hook and Basingstoke and a derailment.

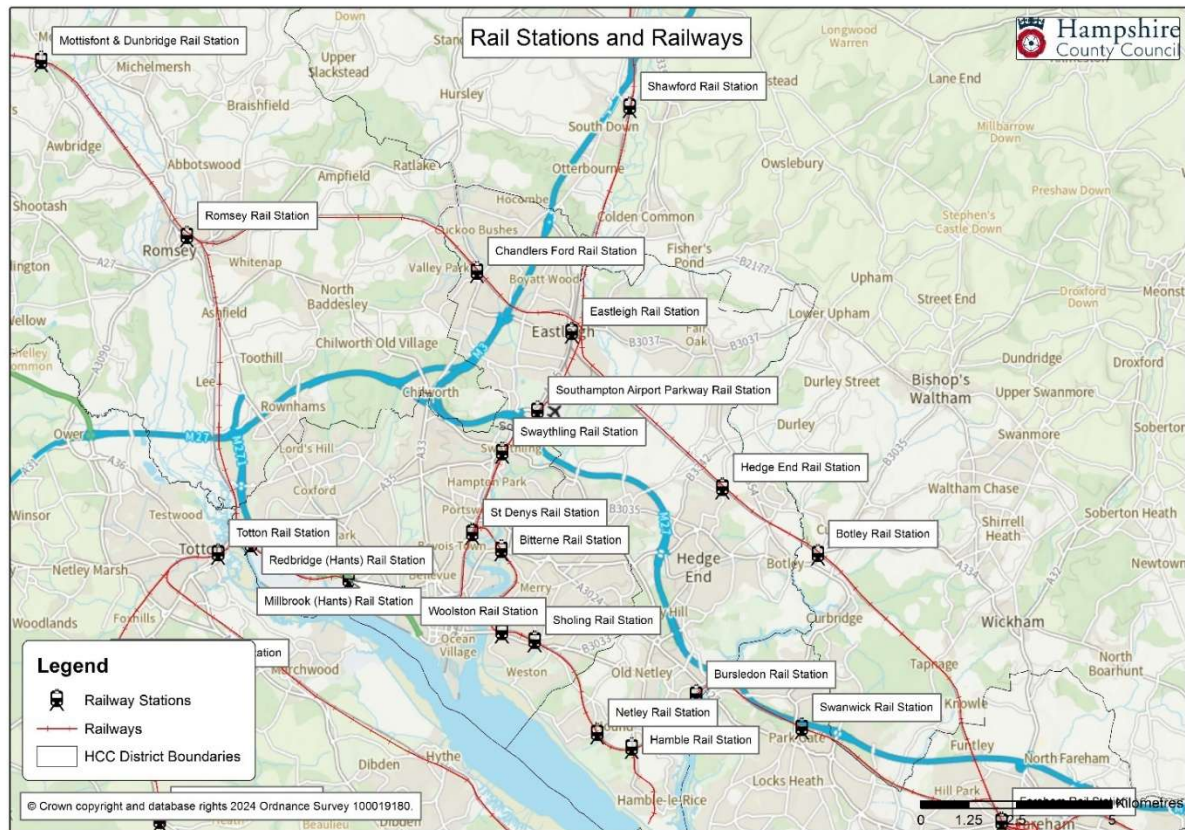


Figure 6: Rail Stations and Railways

Buses, coaches, and taxis

Buses

The Borough is served by four bus companies that together operate almost 20 different services providing links between settlements and connecting with Southampton, Winchester, Gosport and Portsmouth. There are direct bus services into Eastleigh town centre from most places in the Borough, but not from Bursledon, Hamble or Netley because the radial routes are focused on Southampton. Only Eastleigh, Chandler's Ford and Fair Oak have direct bus services to Winchester, and only Bursledon has direct services to Portsmouth.

Eastleigh is part of the defined Southampton Travel to Work area, and frequencies on the main corridors are at least every 30 minutes during weekday daytimes,

however frequencies reduce significantly on most routes during evenings and at weekends.



Figure 7: Southampton Travel to Work Area

Journey times by bus, even when served by a direct service, are typically about twice as long those by car because they often take circuitous routes to pick up passengers. A lack of bus priority measures within the Borough also means that travelling by bus has no advantage as they are affected by congestion the same as all other vehicles, with congestion issues particularly affecting services towards Southampton and Winchester.

Eastleigh town is well served by bus stops and Eastleigh bus station is in the centre of the town, a short walk away from the railway station and adjacent to a large supermarket. Rail stations across the Borough are all served by onward bus services; however they are not co-ordinated with rail services, frequencies vary and information about these services in stations is often poor.

The quality of bus stops and shelters is variable across the Borough, in terms of accessibility, ambience and – critically – passenger information, with many locations lacking even basic timetable information, resulting in a missed opportunity to support and encourage bus use.

New development is not always situated close to existing bus routes and is often low-density which tends to be more car oriented. This means demand is low, making it difficult to provide better services and this becomes a vicious circle.

Coaches

There are up to two daily long distance coach services from Southampton Airport Parkway station to the Midlands and the North and additional services to Birmingham, London, Heathrow and Gatwick Airport are provided from stops just outside the Borough in Southampton, Fareham or Winchester.

Taxis

There are several commercial taxi operators serving the Borough, mainly offering private hire services, and there is a taxi rank in Eastleigh, adjacent to bus station and taxi bays at other locations, including Southampton Airport Parkway station.

In addition, the Stoke Common Taxi-share and Valley Park Carshare provide bookable door-to-door accessible taxi services several days a week.

Car clubs

There are two car club vehicles available for hire within the town centre from the third-party provider, Co-Wheels. These are available from Wells Place and Leigh Road respectively.

Active Travel

Walking and wheeling is the most affordable, flexible, sustainable, and socially inclusive mode of travel available to residents of the Borough and the built-up character of the Borough is ideal for walking for short journeys, or as part of multi-modal journeys. There are good walking and wheeling networks in the towns and villages, with footways alongside most roads, but only limited pedestrian priority and incohesive routes between settlements.

There is a large network of Public Rights of Way (PRoW) within the Borough, comprising footpaths, bridleways, and Byways, including a good network of leisure routes.



Figure 8: Public Rights of Way

A high proportion of primary and secondary school children walk to school although there is potential to work with schools to increase this further.

Barriers to walking and wheeling include busy and wide junctions, main roads with fast or heavy traffic without safe crossing points, and poor signage. In some places, physical barriers and underpasses, intended to segregate pedestrians from traffic, can make for a poor streetscape and an unattractive environment.

The effectiveness of this huge walking network depends on the quality of the facilities, including surfacing, street lighting, direction signs, and safe crossing places, and on the extent to which it is continuous and cohesive.

Cycling is also an affordable, flexible and sustainable mode of transport and the Borough is ideally suited to cycling for short to medium length journeys, but the busy road network and lack of dedicated cycle facilities make this undesirable for many people.

In November 2022, Hampshire County Council approved the [Eastleigh Local Cycling and Walking Infrastructure Plan \(LCWIP\)](#). This plan sets out the County Council's priorities for walking and cycling improvements within the borough over the next decade or so.

The potential cycling network is huge, consisting of about 71km of dedicated on and off-road cycle lanes, shared-use paths and contraflow cycle lanes. The *effective* cycle network also includes much of the local road network on which cyclists share road space with general traffic in both urban and rural areas, however, only experienced cyclists may be confident cycling on busy roads.

The primary cycling network, as set out in the LCWIP, links the key settlements of Fair Oak, Eastleigh and Chandlers Ford, as well as providing links across the borough boundary to Southampton, Fareham, Test Valley and Otterbourne.



Figure 9: Eastleigh LCWIP Routes

Cycle parking is available at over 40 key destinations and at some bus stops for people who wish to continue their journeys by public transport.

Barriers to cycling may include a lack of confidence, on-road parking, limited crossing points, high traffic volumes, poor signage, and the disjointed nature of the current cycle network not providing a consistent standard of facilities to enable cyclists to connect with the places they want to get to.

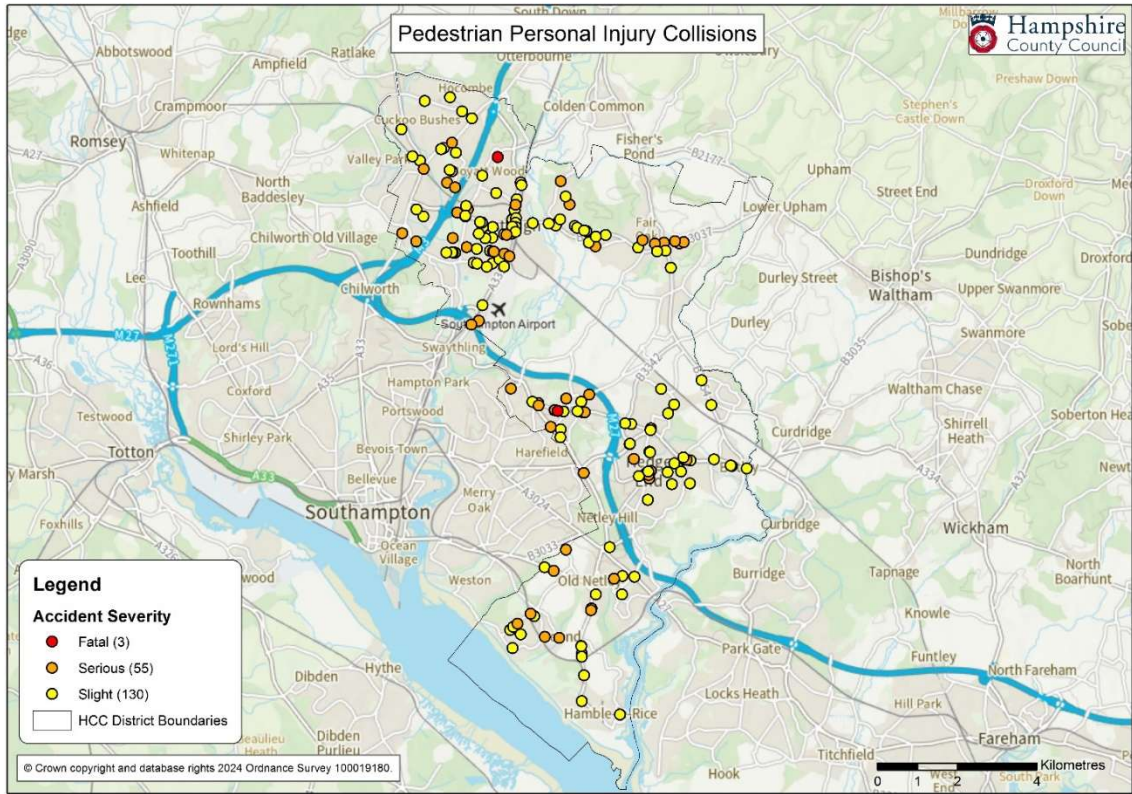


Figure 10: Pedestrian Personal Injury Collisions (2016-2022)

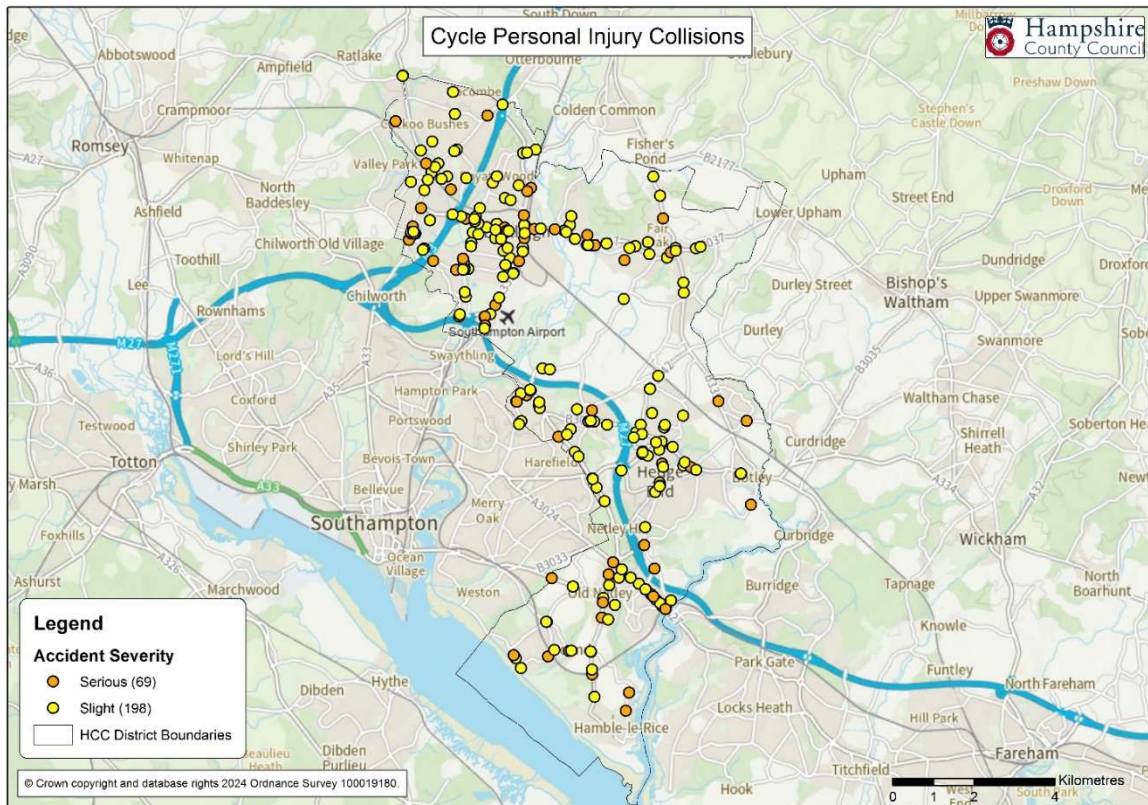


Figure 11: Cycle Personal Injury Collisions (2016-2022)

There is a need to improve the overall experience for people walking and cycling in the Borough with active travel needing to be a priority in the planning of new developments and promoted in school and workplace travel planning. The Eastleigh Local Cycle, Walking and Infrastructure Plan (LCWIP) aspires to increase the level of dedicated on-road facilities by reallocating road space.

Freight and deliveries

The majority of freight and delivery vehicles within the Borough are diesel powered and, with the rise of e-commerce in recent years and a lack of freight consolidation centres, the number of vehicles have increased significantly. This increase is contributing to increased congestion, emissions, and noise levels and is impacting road safety, particularly on routes through Eastleigh town centre.

The Solent Future Transport Zone Freight consolidation project, funded by the DfT, is currently undertaking research around macro and micro consolidation that seeks to address these issues.

Air

Southampton Airport, just to the south of Eastleigh town centre has 1,158 car parking spaces and is linked by footpath to Southampton Airport Parkway station. It is served by ten airlines providing flights to 17 domestic and European destinations (March 2024) and handled just over 600,000 passengers in 2022, down from about 2 million passengers per year pre-pandemic.

Water

The Hamble to Warsash Ferry provides a year-round accessible on demand ferry service for foot passengers and cyclists across the River Hamble between Hamble and Warsash.