

Virtual School Training Brochure 2026-2027

Virtual
School

The Virtual School training offer is open to:

- All Hampshire schools, colleges and education settings
- Out of county schools (OOC) with Hampshire children looked after (CLA)
- Early years settings (nurseries, pre-schools, and childminder)
- Post 16 settings
- Independent schools

Vision

Working in partnership, all children we care for will have high quality education and support so they are prepared for life.

Purpose

The Virtual School promotes a culture of high aspirations, progress and achievements for all our vulnerable children and young people.



Hampshire
County Council

Virtual School

Introduction

The [Statutory Guidance for Designated Teachers](#) states that “The governing body of a maintained school and the proprietor of an academy must ensure that an appropriately qualified and experienced member of staff (DT) undertakes the responsibilities within the school to promote the educational achievement of looked-after and previously looked-after children on the school’s roll. They must also ensure that the designated teacher undertakes training that is appropriate to carrying out this duty”.

“A key part of the designated teacher’s role is ensuring that they, and other school staff, have strong awareness, training and skills around the specific needs of looked-after and previously looked-after children and how to support them. As part of this, designated teachers should proactively build strong links with the virtual school head (VSH) to access training and keep up to date with research and good practice” (2018).

The Hampshire Virtual School has developed a core training offer for Hampshire County Council (HCC) designated teachers (DTs) and designated leads (DLs) in early years (pre-schools/nurseries) and post 16 settings. The core training offer is designed to help DTs and DLs to fulfil their statutory duties towards children looked after (CLA) and previously looked after children (PLAC), children with a social worker (CWSW) and those in kinship care. For DTs and DLs in out of county (OOC) schools and settings, the assumption is that you will access your own local authority statutory training, although you are welcome to access training sessions offered by Hampshire also.

Some of the training is targeted specifically at supporting our CLA, PLAC, CWSW, or kinship care cohorts, but much of the training offered is about supporting all vulnerable children and young people.

Every educational setting in Hampshire, including those without CLA, can access resources on the [Virtual School Moodle](#).

Our experience and research indicate that often, it is not just the DT and DL who need training to meet the needs of care-experienced children, but any adult in the school/setting working with them. For this reason, our broad training offer is open to all staff responsible for supporting vulnerable children and young people with their education.

All training on offer is subject to change. Updates will be provided across the academic year via school comms and direct emails to DTs.

Please contact the Hampshire Virtual School to discuss any training requirements: HCC.VSTraining@hants.gov.uk.

For further information on the training listed and to register for a course, please follow the Eventbrite link included in the course description.



Virtual School Moodle

Virtual School Moodle – open access for all, with resources to support the roles of Designated Teachers/Leads, plus education and social care professionals.



<https://virtualschool.hants.gov.uk/>

Welcome to the Hampshire Virtual School Moodle site.

This site provides learning materials and practical resources to support schools, colleges, education settings, foster carers, parents, and social workers. It is designed to help those working with children in care, previously looked after children, children in kinship care or under a special guardianship order, and children who have a social worker.

The [Virtual School Moodle](#) will support you with links to key documents and helpful resources.

You can also access bitesize recorded sessions (particularly useful for new DTs and DLs), including:

- the role of the Virtual School
- how to complete the PEP form
- previously looked after children (PLAC)
- children with a social worker (CWSW)
- children and young people in kinship care



Key Information and Resources



School and Education Settings



Social Workers



Parents and Carers

Hampshire Designated Teacher Conference

Thursday 5 November 2026

Expert speakers, impactful strategies and networking for professionals supporting vulnerable children and young people

*“Be 10% braver!”
Jaz Ampaw-Farr*



Jaz Ampaw-Farr

- Multi-award-winning speaker, comedian, author and TEDx presenter
- Specialist in resilience, leadership and motivation
- Inspires action through powerful lived experience, including her time in care.

Jaz is one of the top female motivational speakers in the UK. Jaz is a force of nature who galvanizes people to take action. Jaz speaks internationally and works with industry leaders such as the BBC, and is also the author of ‘Because of You, This is Me.’

Jaz combines lessons learned from a challenging and often brutal childhood with those from her rise to TV presenter, TEDx Speaker, stand-up comedian and Z-list reality TV star. Her authentic honesty and humour consistently empower people to think differently about leading themselves and others. Jaz’s determination drove her from appalling abuse at the hands of her own parents to running away from foster care and life as a teen on the streets, to advising countries on education policy and living as the resilience influencer she is today.

**Be inspired by nationally recognised speakers
Connect with other Designated Teachers and colleagues**

Enhance outcomes for vulnerable children

Join education professionals from across Hampshire for the highly anticipated Designated Teacher Conference 2026.

Featuring keynote speakers Jaz Ampaw-Farr and Steven Russell, alongside sessions from Hampshire Virtual School.

Network, share practice and gain insight into supporting looked after children, previously looked after children, children with a social worker and those in kinship care.



Steven Russell

- CEO of *Elements SEMH Support*
- Care-experienced leader with expertise in trauma and resilience
- Award-winning innovator improving outcomes for vulnerable children

Having grown up within the care system, Steven’s story is one of resilience, empathy, and relentless determination to create meaningful change. In 2007, he saw an advertisement for a Residential Support Worker. Steven soon found himself supporting children with emotional and behavioural difficulties. Having experienced rejection, uncertainty, and trauma throughout his childhood, Steven can put himself in a place of understanding and empathy to provide young people with the support they need.

Celebrated for his innovative approaches and profound impact, Steven has received well-deserved recognition, including being the winner of the Global Inclusion SEMH Award 2025. Steven published his book ‘Drip by Drip Day by Day’ in 2025.

Date: Thursday 5 November 2026

Time: 9am-4pm

Venue: South Hampshire Area

Cost: £150

Book your place now on Eventbrite

at: <https://www.eventbrite.co.uk/e/designated-teacher-conference-autumn-2026-tickets-1991690536008?aff=oddtcreator>



*For further information contact the Virtual School at
HCC.VSTraining@hants.gov.uk*

Termly Network Meetings

Title	Details	Dates & Times	Location
<p>Designated Teacher Network (Primary and Secondary Settings)</p>	<p>This online network meeting will be your chance to find out what is happening both in the Virtual School and nationally and what is on offer to support staff and young people across all phases. You only need to attend one network meeting each term; the content is repeated across both sessions.</p> <p>The network meetings are appropriate for all phases and settings.</p>	<p>Autumn 18 / 19 November 2026 3.45pm to 4.45pm Spring 02 / 03 February 2027 3.45pm to 4.45pm Summer 09 / 10 June 2027 3.45pm to 4.45pm</p>	<p>Teams</p> <p>Invitations will be sent closer to the time.</p>
<p>Post 16 Designated Lead Termly Network Meeting</p>	<p>This online session is designed specifically for our Post 16 Designated teachers and wider teams supporting Looked After Children. It is intended for all Post 16 settings both within and out of Hampshire. It gives an overview of the roles and responsibilities in colleges and Post 16 settings, the Hampshire PEP process including the ASSET system, attendance overview and information on how Hampshire Virtual school can work with colleges to achieve best practice and optimum outcomes.</p>	<p>24 / 25 November 2026 3.45pm to 4.45pm 9 / 10 February 2027 3.45pm to 4.45pm 15 / 16 June 2027 3.45pm to 4.45pm</p>	<p>Teams</p> <p>Invitations will be sent closer to the time.</p>

Training Menu

This menu is designed to support schools to identify appropriate training for different staff roles. Whilst all training sessions are open to all staff, the guidance indicates which groups may benefit most from each session.

Sessions marked with an (*) are flexible and schools could consider joining these in larger groups via projection to deliver:

- Whole-school training for all staff
- Targeted group sessions e.g. Teaching Assistants, Heads of Year, or specific teaching teams.

Designated Teachers, SENCOs or DSLs	Appropriate for any school staff to attend	Teaching Assistants/ Learning Support Assistants	Extended Training Projects/ Programmes	Available on the Moodle Page Click Here
Designated Teacher Statutory Training	Attachment Training (2 hours) *	Supporting Vulnerable Students as a Learning Support Assistant	Supporting Trauma Attachment Aware Relational Settings (STAARS) Programme 2026	Short PEP Webinars are available on our Moodle page for the following areas: <ul style="list-style-type: none"> • Recording Pupil Voice • Capturing & Recording Data • Completing the Meeting Section • Need Analysis • Smart Target Setting
Designated Teacher Conference	Attachment Training (1 Hour) *			
Designated Teacher Termly Networks	PLAC and the School Census 2026: What You Need to Know <i>(Suitable for Business Managers)</i>		Executive Functioning Project for Secondary Schools	Webinars to support transition between phases are available on our Moodle page.
Gathering Child Voice				
Championing Kinship Care	Understanding and Supporting Previously Looked after Children in School			
PLAC and the School Census 2026: What You Need to Know	Empowering Teachers and Schools: Supporting Executive Functioning * (3 x 1-hour sessions)		The Year R Project: Supporting Care Experienced Children in Reception	
Effective Use of Education Support Plans				
Promoting the Education of Children with a Social Worker				

*Early Years-specific training (for DTs, SENCOs and YR staff) can be found in the **Early Years section***

Training Offer

[Click](#) Virtual School Termly Network Meeting

[Click](#) Training Menu

[Click](#) Statutory Designated Teacher Training

[Click](#) Supporting Trauma Attachment Aware Relational Settings (STAARS)

[Click](#) Executive Functioning

[Click](#) Gathering Child Voice

[Click](#) Supporting Vulnerable Students as a Learning Support Assistant (LSA)

[Click](#) Promoting the Education for Children with a Social Worker (CWSW)

[Click](#) Championing Kinship Care

[Click](#) Previously Looked After Children (PLAC)

[Click](#) Effective Use of Education Support Plans (ESP)

[Click](#) Early Years (Pre-schools, Nurseries and Year R)

Booking via Eventbrite:

If you are booking on behalf of someone else, please use the attendee's name and email address. This ensures they receive relevant booking information and meeting links directly. If you are booking for multiple attendees, please complete each booking separately.

Eventbrite booking links close at midday on the Thursday before the training.

If booking has closed but you would like to attend, please email HCC.VSTraining@hants.gov.uk

Training Offer

Statutory Designated Teacher Training

Title	Details	Dates	Location
<p>Statutory Designated Teacher Training</p> <p><i>This is open to anyone in your team who is undertaking aspects of the DT role, including Designated Safeguarding Leads (DSLs)</i></p>	<p>Full-day face-to-face training</p> <p>This session will ensure that the operational tasks of designated teachers (DTs) are examined in depth and their implications considered. It will also give DTs an understanding of the purpose and significance of needs analysis tools and explore different tools available for use. DTs will look beyond the operational aspect of completing the personal education plans (PEPs) and education support plans (ESPs) and focus on an effective process for writing these plans. The training covers working with children in care (CLA), previously looked after children (PLAC), those in kinship care or with a special guardianship order (SGO) and children with a social worker (CWSW).</p> <p>17/09/2026 https://www.eventbrite.co.uk/e/1991058413312?aff=oddtcreator</p> <p>15/10/2026 https://www.eventbrite.co.uk/e/1991058933869?aff=oddtcreator</p> <p>01/12/2026 https://www.eventbrite.co.uk/e/1991059051220?aff=oddtcreator</p> <p>21/01/2027 https://www.eventbrite.co.uk/e/1991059181610?aff=oddtcreator</p> <p>18/03/2027 https://www.eventbrite.co.uk/e/1991059515609?aff=oddtcreator</p> <p>24/06/2027 https://www.eventbrite.co.uk/e/1991059765356?aff=oddtcreator</p>	<p>17/09/2026 9.30am to 4pm</p> <p>15/10/2026 9.30am to 4pm</p> <p>01/12/2026 9.30am to 4pm</p> <p>21/01/2027 9.30am to 4pm</p> <p>18/03/2027 9.30am to 4pm</p> <p>24/06/2027 9.30am to 4pm</p>	<p>Winchester</p>

Whole Setting Relational Practice

Title	Details	Dates	Location
<p>Attachment Research Community (ARC)</p>	<p>All Hampshire settings have free membership to the Attachment Research Community (ARC). Engagement has been fantastic, and as we enter our third year, we would be delighted to hear from any settings that are interested in learning more, and achieving their Bronze, Silver or Gold Pathway award. If you would like to find out more about how ARC can benefit your setting, please arrange a 1:1 consult with an Education Adviser.</p> <p>This is suitable for any staff involved or interested in ARC and relational practice.</p> <p>Please contact virtualschool@hants.gov.uk for more details and to express interest.</p>	<p>Available on request</p>	<p>Teams</p>
<p>Supporting Trauma Attachment Aware Relational Settings (STAARS) Programme 2026/27</p> <p><i>NB: This training was formerly known as ATAS (Attachment and Trauma Aware Settings)</i></p>	<p>Three core days training and follow up network training</p> <p>Team-led training model for all phases of education settings (3–5 participants per setting), designed to strengthen leadership of trauma-informed and attachment-aware practice. The programme focuses on embedding relational approaches across the whole setting and is led by Hampshire’s Virtual School, with contributions from the Primary Behaviour Service and HIAS SEN Advisers.</p> <p>Booking now open for STAARS 3 and availability to register interest for STAARS 4</p> <p>Please contact virtualschool@hants.gov.uk for more details and to express interest.</p>	<p>STAARS 3 Day 1 28/01/2027 9am to 4pm</p> <p>STAARS 3 Day 2 23/02/2027 9am to 4pm</p> <p>STAARS 3 Day 3 15/04/2027 9am to 4pm</p> <p>STAARS 4 Cohort Dates TBC starting Summer 2027</p>	<p>Winchester</p>

Attachment and Trauma

Title	Details	Dates	Location
Attachment Training (2 Hours)	<p>Care-experienced children and young people come to education with a range of lived experiences that not only affect many aspects of their overall development but also their ability to 'settle to learn' in an education setting. They have increased challenges that must be understood by education professionals in order to best support them and ensure that they can achieve the best educational outcomes possible.</p> <p>This session introduces participants to some of the key ideas, concepts, research and strategies for trauma-informed practice to better understand and support our children and young people's needs.</p> <p>06/10/2026 https://www.eventbrite.co.uk/e/1991056911821?aff=oddtcreator</p> <p>11/02/2027 https://www.eventbrite.co.uk/e/1991057010115?aff=oddtcreator</p> <p>29/04/2027 https://www.eventbrite.co.uk/e/1991057207706?aff=oddtcreator</p>	<p>06/10/2026 9am to 11am</p> <p>11/02/2027 9am to 11am</p> <p>29/04/2027 9am to 11am</p>	<p>Teams</p>
Attachment Training (1 Hour)	<p>This is a shortened version of the above training, which introduces participants to some of the key ideas, concepts, research and strategies for trauma-informed practice to better understand and support our children and young people's needs.</p> <p>This training is ideal as a refresher course to build on previous knowledge or for DTs to share alongside less experienced colleagues as a starting point for exploring the topic further.</p> <p>03/12/2026 https://www.eventbrite.co.uk/e/1991057296973?aff=oddtcreator</p> <p>15/03/2027 https://www.eventbrite.co.uk/e/1991057403291?aff=oddtcreator</p> <p>06/07/2027 https://www.eventbrite.co.uk/e/1991057553741?aff=oddtcreator</p>	<p>03/12/2026 3.45pm to 4.45pm</p> <p>15/03/2027 3.45pm to 4.45pm</p> <p>06/07/2027 3.45pm to 4.45pm</p>	<p>Teams</p>

Executive Functioning

Title	Details	Date	Location
<p>Empowering Teachers and Schools: Supporting Executive Functioning</p>	<p>These sessions run as a block of three. You should attend all three sessions.</p> <p>This training session is designed to support school staff in understanding and addressing Executive Functioning (EF) challenges faced by children who have experienced trauma. Experiencing trauma can impair EF skills such as working memory, inhibition control and cognitive flexibility. These deficits contribute to poor academic outcomes and classroom challenges. School staff play a pivotal role in scaffolding EF development.</p> <p>Session 1: Understanding EF and how this may present in the classroom</p> <p>Session 2: Strategies to support EF in the classroom</p> <p>Session 3: Barriers and enablers to EF support and sustaining practice through whole school approaches</p> <p>Autumn https://www.eventbrite.co.uk/e/1991467963287?aff=oddtcreator</p> <p>Summer https://www.eventbrite.co.uk/e/1991468845927?aff=oddtcreator</p>	<p>Autumn: Session 1 13/10/2026 3.45pm to 4.45pm</p> <p>Autumn: Session 2 16/11/2026 3.45pm to 4.45pm</p> <p>Autumn: Session 3 02/12/2026 3.45pm to 4.45pm</p> <p>Summer: Session 1 13/05/2027 3.45pm to 4.45pm</p> <p>Summer: Session 2 17/06/2027 3.45pm to 4.45pm</p> <p>Summer: Session 3 01/07/2027 3.45pm to 4.45pm</p>	<p>Teams</p>

Child Voice / LSA Training

Title	Details	Dates	Location
Gathering Child Voice	<p>Child voice plays a crucial role in creating a positive school environment where pupils feel heard, valued, and empowered. This session considers how we can listen to pupil voice to best support children. It outlines different creative and supportive ways to gather pupil voice and explores how we can show pupils the changes we are making in response to their views.</p> <p>22/10/2026 https://www.eventbrite.co.uk/e/1991066487462?aff=oddtcreator</p> <p>25/02/2027 https://www.eventbrite.co.uk/e/1991066845533?aff=oddtcreator</p> <p>15/06/2027 https://www.eventbrite.co.uk/e/1991066908722?aff=oddtcreator</p>	<p>22/10/2026 3.45pm to 4.45pm</p> <p>25/02/2027 3.45pm to 4.45pm</p> <p>15/06/2027 3.45pm to 4.45pm</p>	<p>Teams</p>
Supporting Vulnerable Students as a Learning Support Assistant (LSA)	<p>This brief session will explore what it means to be a young person in care or someone who has experienced care in the past. We will consider how disorganised attachments and the experience of trauma may influence behaviours and create barriers to learning. We'll also look at what you can do as a Learning Support Assistant to support the children and young people you work with. We will also briefly cover the Virtual School's role in supporting the education of our children looked after and previously looked after children cohort in school.</p> <p>19/10/2026 https://www.eventbrite.co.uk/e/1991067065190?aff=oddtcreator</p> <p>08/02/2027 https://www.eventbrite.co.uk/e/1991067366090?aff=oddtcreator</p> <p>05/07/2027 https://www.eventbrite.co.uk/e/1991067739206?aff=oddtcreator</p>	<p>19/10/2026 10am to 11am</p> <p>08/02/2027 2pm to 3pm</p> <p>05/07/2027 10am to 11am</p>	<p>Teams</p>

Children With A Social Worker/Kinship Care

Title	Details	Dates	Location
Promoting the Education for Children with a Social Worker (CWSW)	<p>This session explains the importance of school staff understanding the vulnerabilities of children with (or who have had) support from a social worker and the impact these can have on attendance, behaviour, and educational outcomes. It outlines practical ways schools can support this group of children to increase their engagement in school.</p> <p>08/10/2026 https://www.eventbrite.co.uk/e/1991062104352?aff=oddtcreator</p> <p>09/03/2027 https://www.eventbrite.co.uk/e/1991065317964?aff=oddtcreator</p> <p>21/06/2027 https://www.eventbrite.co.uk/e/1991065728191?aff=oddtcreator</p>	<p>08/10/2026 9.30am to 11.30am</p> <p>09/03/2027 9.30am to 11.30am</p> <p>21/06/2027 9.30am to 11.30am</p>	<p>Teams</p>
Championing Kinship Care	<p>This session explains the need for greater focus and visibility of the distinct needs of children and families living within kinship care and the Virtual School's role in promoting these. It outlines the school's responsibility to identify and support the kinship care families in their school and provides a range of signposting to support this.</p> <p>12/11/2026 https://www.eventbrite.co.uk/e/1991695462744?aff=oddtcreator</p> <p>13/01/2027 https://www.eventbrite.co.uk/e/1991697080583?aff=oddtcreator</p> <p>08/06/2027 https://www.eventbrite.co.uk/e/1991697120703?aff=oddtcreator</p>	<p>12/11/2026 3.45pm to 4.45pm</p> <p>13/01/2027 3.45pm to 4.45pm</p> <p>08/06/2027 3.45pm to 4.45pm</p>	<p>Teams</p>

Previously Looked After Children

Title	Details	Dates	Location
<p>PLAC and the School Census 2026: What You Need to Know</p>	<p>Single 1-hour session A short session to support DTs, school business managers and other school staff to understand the process and practice around securing previously looked after children (PLAC) pupil premium funding via correct census recording.</p> <p>10/09/2026 https://www.eventbrite.co.uk/e/1991060774374?aff=oddtcreator</p> <p>14/09/2026 https://www.eventbrite.co.uk/e/1991060885707?aff=oddtcreator</p> <p>15/09/2026 https://www.eventbrite.co.uk/e/1991061463435?aff=oddtcreator</p>	<p>10/09/2026 3.45pm to 4.45pm</p> <p>14/09/2026 10am to 11am</p> <p>15/09/2027 2pm to 3pm</p>	<p>Teams</p>
<p>Understanding and Supporting Previously Looked After Children in School</p>	<p>This webinar equips education professionals with the knowledge, understanding, and practical strategies needed to support previously looked after children (PLAC) in school. It explores the early experiences of children who have left care through adoption, special guardianship, or child arrangement orders, and how these may impact learning, behaviour, and emotional wellbeing.</p> <p>Participants are introduced to attachment theory and trauma-informed practice, with a focus on creating safe, nurturing environments. The course also covers practical classroom strategies, the role of designated teachers, collaboration with families and professionals, and the effective use of Pupil Premium Plus.</p> <p>20/10/2026 https://www.eventbrite.co.uk/e/1991697566035?aff=oddtcreator</p> <p>26/01/2027 https://www.eventbrite.co.uk/e/1991698140754?aff=oddtcreator</p> <p>27/04/2027 https://www.eventbrite.co.uk/e/1991698582074?aff=oddtcreator</p>	<p>20/10/2026 9am to 10.30am</p> <p>26/01/2027 9am to 10.30am</p> <p>27/04/2027 1.30pm to 3pm</p>	<p>Teams</p>

Education Support Plan (ESP)

Title	Details	Dates	Location
<p>Effective Use of Education Support Plans: <i>Supporting Previously Looked After Children, Children with a Social Worker, and children in Kinship Care</i></p>	<p>This webinar explores how Education Support Plans can be used effectively to meet the needs of previously looked after children, children with a social worker, and those in kinship care. It provides practical guidance on developing meaningful, purposeful plans that support progress, wellbeing, and inclusion, while promoting attachment-aware and trauma-informed practices and increasing the visibility of a child's needs.</p> <p>Participants will gain a clearer understanding of how to identify needs, set appropriate targets, and use available funding to maximise impact. The session will also highlight the importance of a collaborative approach, working with families, carers, and professionals to ensure consistent and joined-up support for vulnerable learners.</p> <p>24/09/2026 https://www.eventbrite.co.uk/e/1991701286162?aff=oddtcreator</p> <p>27/01/2027 https://www.eventbrite.co.uk/e/1991701433603?aff=oddtcreator</p> <p>04/05/2027 https://www.eventbrite.co.uk/e/1991701509831?aff=oddtcreator</p>	<p>24/09/2026 9.30am to 10.30am</p> <p>27/01/2027 2pm to 3pm</p> <p>04/05/2027 3.45pm to 4.45pm</p>	<p>Teams</p>

[Contents](#)

Contacting the Extended Duties Team

If you have any queries or would like to discuss any issues relating to the education of children with a social worker, previously looked after children or children in kinship care, please email VSExtendedDuties@hants.gov.uk and one of our team will get in touch.

Early Years – Designated Lead Training

Title	Details	Dates	Location
<p>Early Years Designated Lead and PEP Training (Pre-Schools/Nurseries/Childminders)</p> <p><i>Please note: Whilst this training is aimed at EY settings, school Designated Teachers are welcome to join if they have previously completed DT training and would like an EY refresher.</i></p>	<p>This training is for Early Years Designated Leads and practitioners involved in the Personal Education Plan (PEP) process. It provides an overview of the Virtual School's role and the responsibilities of the Designated Lead in promoting positive outcomes for looked after children, with reference to previously looked after children. Participants will develop their understanding of care-experienced children, including the impact of attachment and Adverse Childhood Experiences (ACEs).</p> <p>The session also covers leading and contributing to high-quality PEPs, from effective meeting preparation to guidance on the Hampshire 'Asset' PEP form, via examples and reflection.</p> <p>14/10/2026 https://www.eventbrite.co.uk/e/1991048233865?aff=oddtcreator</p> <p>10/02/2027 https://www.eventbrite.co.uk/e/1991048894842?aff=oddtcreator</p> <p>26/5/2027 https://www.eventbrite.co.uk/e/1991048972073?aff=oddtcreator</p>	<p>14/10/2026 9.30am to 12pm</p> <p>10/02/2027 9.30am to 12pm</p> <p>26/05/2027 9.30am to 12pm</p>	<p>Teams</p>
<p>Early Years: Introduction to the EY PEP (Condensed Webinar)</p> <p><i>Please note: Whilst this training is aimed at EY settings, school Designated Teachers are welcome to join if they have previously completed DT training and would like an EY refresher.</i></p>	<p>This webinar is a shortened version of the <i>Early Years Designated Lead</i> training course, offered after school hours to support wider accessibility. It provides a concise introduction to the PEP process, the role of the Virtual School, and the responsibilities of the Designated Lead in supporting looked after children in Early Years provision.</p> <p>Participants will develop their understanding of multi-agency working, what it means to be a child in care, and the role of the PEP in improving outcomes. The session includes a practical overview of the Hampshire 'Asset' PEP form, supporting practitioners to engage confidently with the process and contribute effectively to planning that meets children's needs.</p> <p>https://www.eventbrite.co.uk/e/1991051208763?aff=oddtcreator</p>	<p>17/11/2026 3.30pm to 5pm</p>	<p>Teams</p>

There is more training to support those working in Early Years on the next page.

[Contents](#)

Early Years – Foundation Training

Title	Details	Dates	Location
<p>Early Years: Introduction to Attachment and Trauma</p>	<p>This training is open to all Early Years practitioners working with children who have experienced trauma or disruptions to attachment. It provides an accessible introduction to attachment theory and the impact of Adverse Childhood Experiences (ACEs) on young children’s development, relationships and behaviour. Participants will explore how early experiences shape emotional regulation, learning and behaviour, and develop an understanding of secure and insecure attachment patterns. The session focuses on practical, trauma-informed approaches that can be used in everyday settings, helping practitioners respond with empathy and consistency.</p> <p>Through reflection and discussion, delegates will consider behaviour as communication, recognise potential triggers, and develop approaches that support regulation, connection and positive engagement.</p> <p>https://www.eventbrite.co.uk/e/1991051083388?aff=oddtcreator</p>	<p>11/11/2026 9.30am to 11am</p>	<p>Teams</p>
<p>Early Years: Understanding and Supporting Behaviour that Challenges</p>	<p>Some children in Early Years - particularly those who are care experienced or have experienced trauma - may find it difficult to regulate their emotions and behaviour. This practical session explores what sits beneath behaviour that challenges, helping practitioners understand it through an attachment-aware and trauma-informed lens.</p> <p>You will consider the communicative purpose of behaviour, deepen your understanding of regulation and co-regulation, and explore how adult responses can either escalate or de-escalate situations. Alongside this, the session offers practical strategies and introduces tools to help identify underlying needs and plan targeted support. Ideal for all Early Years staff, this course will build your confidence to respond to behaviour with insight, empathy and greater consistency in your practice</p> <p>https://www.eventbrite.co.uk/e/1991050015193?aff=oddtcreator</p>	<p>11/03/2027 9.30am to 11am</p>	<p>Teams</p>

There is more training to support those working in Early Years on the next page.

[Contents](#)

Early Years – Targeted Training

Title	Details	Dates	Location
<p>Early Years: Planning for Progress in the Early Years</p> <p><i>Please note: Content overlaps with previous 'EY: Writing an Effective PEP' training and is not recommended for those who have completed that course recently</i></p>	<p>This practical online workshop is for Early Years practitioners, Reception staff, and SENCOs who want to strengthen how they understand vulnerable children's needs and translate this into effective support. The training is particularly relevant for those supporting care experienced children.</p> <p>Using a strengths-based approach, the session explores how to assess needs, identify barriers, and develop purposeful action plans and SMART targets that lead to meaningful progress. Needs analysis tools to support are introduced. Practitioners will consider how planning documents such as PEPs or Education Support Plans can be used as active tools within inclusive practice, rather than as standalone paperwork. The session also considers effective use of EYPP/PP+ funding. Participants will leave with greater confidence in turning assessment into meaningful action, ensuring that planning supports both progress and wellbeing within everyday practice.</p> <p>https://www.eventbrite.co.uk/e/1991053589885?aff=oddtcreator</p>	<p>19/01/2027 9.30am to 11.30am</p>	<p>Teams</p>
<p>Early Years: Supporting Sensory Regulation in Vulnerable Children</p>	<p>Early Years environments can be busy and stimulating, which can be overwhelming for some children. This practical training explores how sensory processing and regulation can impact behaviour, engagement and emotional wellbeing - particularly for children who have experienced early life trauma or disruptions to attachment. Designed for Early Years practitioners working with vulnerable children in nurseries, preschools and Reception classes, the session supports you to recognise how sensory needs may present and how they can influence a child's ability to feel settled and ready to engage. It will also explore why children who are care experienced or who have experienced early life trauma may demonstrate increased or heightened sensory needs.</p> <p>The training focuses on identifying sensory demands within everyday routines and environments, and introduces practical strategies to support regulation without the need for specialist resources. By integrating sensory understanding with attachment-aware practice, the session supports the creation of more inclusive, responsive environments.</p> <p>https://www.eventbrite.co.uk/e/1991055213742?aff=oddtcreator</p>	<p>28/04/2027 9.30am to 11.30am</p>	<p>Teams</p>

There is more training to support those working in Early Years on the next page.

[Contents](#)

Early Years – Targeted Training

Title	Details	Dates	Location
<p>Early Years: Emotion Coaching</p>	<p>Emotion Coaching is a powerful, evidence-informed approach that supports children to understand, express and regulate their emotions. In this session, you will explore how emotions influence behaviour and how adults can respond in ways that build emotional literacy, strengthen relationships and support developing self-regulation. Rooted in attachment and relational approaches, Emotion Coaching helps children feel heard and understood while learning appropriate ways to manage their feelings.</p> <p>You will be introduced to the key steps of Emotion Coaching and consider how to apply them effectively within everyday Early Years practice. Through practical examples and reflection, the session supports you to respond with empathy while maintaining clear guidance and boundaries. Adaptations for children with limited speech and language will also be explored. The session offers practical strategies you can use straight away to create calm, connected environments where children feel valued, understood and supported in managing their emotions.</p> <p>https://www.eventbrite.co.uk/e/1991050861725?aff=oddtcreator</p>	<p>22/06/2027 9.30am to 11am</p>	<p>Teams</p>
<p>Early Years: Year R Transition (for schools, preschools and nurseries)</p>	<p>The move into Year R is a significant milestone and, for children who are looked after or care experienced, it can bring additional challenges linked to experiences of change, loss and uncertainty. This session explores transition through a trauma-informed and attachment-aware lens, helping practitioners understand how this process is experienced by the child and why strong, relational support is key to success.</p> <p>Bringing together Early Years settings and schools, the training focuses on strategies to support children before, during and after transition. You will explore approaches that promote familiarity, safety and belonging, alongside practical guidance on communication, co-regulation and supporting children's emotional responses to change. The session also highlights the importance of effective information sharing and partnership working, ensuring that key knowledge travels with the child and supports a consistent, joined-up approach across settings.</p> <p>18/05/2027 https://www.eventbrite.co.uk/e/1991049441477?aff=oddtcreator</p> <p>20/05/2027 https://www.eventbrite.co.uk/e/1991049724323?aff=oddtcreator</p>	<p>18/05/2027 10am to 11.15am</p> <p>Or</p> <p>20/05/2027 3.45pm to 5pm</p>	<p>Teams</p>

There is more training to support those working in Early Years on the next page.

Contents

Early Years – The Year R Project

Title	Details	Time	Location
<p>Early Years: The Year R Project - Supporting Care Experienced Children in Reception</p>	<p>The Year R Project is a fully funded training programme designed to support Reception practitioners working with looked after and care experienced children. Delivered by Hampshire Virtual School, with input from Services for Young Children, this programme brings together specialist expertise to deepen understanding of attachment, trauma and early development.</p> <p>Across three face-to-face sessions, participants will explore practical approaches to support emotional regulation, behaviour, early literacy and transition, while reflecting on how to develop an attachment-aware classroom environment. Opportunities to apply learning between sessions allow practitioners to embed strategies and reflect on their impact in practice. This supportive, collaborative programme aims to build confidence, strengthen professional understanding, and equip practitioners with the tools needed to create inclusive environments that meet the needs of vulnerable children.</p> <p>For questions or further information, please contact the Early Years Education Adviser, Amanda Rowe, at amanda.rowe@hants.gov.uk</p> <p>To request a place, please complete this form: https://forms.cloud.microsoft/e/jGe5i7sf2p</p>	<p>Day 1: 25/11/26 Day 2: 24/02/27 Day 3: 21/04/25</p> <p>all 9.30am to 3.30pm</p>	<p>Winchester</p>

Terms and Conditions

Funding

The Hampshire Virtual School uses the allocated pupil premium plus grant (PPPG) top slice to fund/subsidise the training offer. Therefore, most of the training is free to attend. As per the DfE conditions of grant, we are accountable for the spend and the impact. Therefore, we require all delegates attending training to complete the relevant evaluations.

Please note that where non-attendance for a booked place occurs, we reserve the right to charge the cost back to the school.

Online training

Delegates attending online sessions via Teams are requested to join the session in time to register and ensure any technical difficulties can be resolved. Where possible, delegates should be able to access the microphone and camera to enhance participation. Where significant technical issues occur with the trainer and the online session is compromised, delegates can expect to receive a recorded session as a substitute or an optional alternative date offered.

Booking and further information

For further information on the training listed and to register for a course, please follow the Eventbrite link included in the course description.

Hampshire Virtual School ([hants.gov.uk](https://www.hants.gov.uk))

<https://www.hants.gov.uk/educationandlearning/virtual-school>

Virtual School Moodle <https://virtuelschool.hants.gov.uk/>

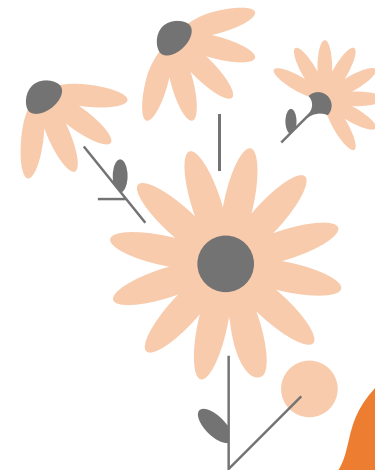
vsmoodle@hants.gov.uk please use this email for an enquires regarding Moodle.

To discuss any aspect of this training offer in more detail, please

email: Hampshire Virtual School shared mailbox

HCC.VSTraining@hants.gov.uk

Courses are subject to change and cancellation. The information within this brochure is accurate at the time of writing – summer term 2026



Privacy Notice and Contact Details

Privacy notice

Hampshire County Council (HCC) collects information about you in order to provide you with services. We will use the information you provide in this case to facilitate the training session you have booked. The information will not be used for any other purpose. All individual responses will be kept confidential and will not be shared. We have asked you to provide contact details, and as such, respondents consent to be contacted by a member of the Virtual School. Consent can be withdrawn at any time. We will keep your personal information for one year.

You have certain legal rights regarding the personal information we collect from you. For further information, please refer to our website's data protection page at <https://www.hants.gov.uk/aboutthecouncil/strategiesplansandpolicies/dataprotection>. You can also contact the County Council's Data Protection Officer at data.protection@hants.gov.uk. If you have any concerns about the way we are collecting or using your personal data, you should raise your concern with us in the first instance or directly to the Information Commissioner's Office at <https://ico.org.uk/concerns/>

Vision

Working in partnership, all children we care for will have high quality education and support so they are prepared for life.

Purpose

The Virtual School promotes a culture of high aspirations, progress and achievements for all our vulnerable children and young people.



Virtual School

Hampshire Virtual School
Children's Services Directorate
Hampshire County Council
2nd Floor, Ell Court – West
Winchester
Hampshire
SO23 8UG

Hampshire Virtual School Training mailbox:
HCC.VSTraining@hants.gov.uk

Virtual School website:
<https://www.hants.gov.uk/educationandlearning/virtual-school>

