

Wraparound Provider Bulletin Autumn 2025



We will send you this bulletin termly with important updates and links to useful information. Please share the bulletin with your colleagues.

If you have any queries please contact [Services for Young Children](#), or visit our [Facebook page](#).

Some sections have been updated as information has changed.

In this bulletin

- Business and inclusion support
- Funding updates
- Training updates
- Autumn MI return
- Quality and self-assessments
- Inclusion updates and funding
- Thrive
- New early years Ofsted inspection guidance
- Childcare recruitment campaign updates
- Information for parents and carers



Training spotlight

What's behind the behaviour?

Would your staff benefit from practical strategies to better understand and respond to challenging behaviour?

These free, bespoke sessions cover behaviour as communication, the assault cycle, and approaches and strategies to support children effectively in wraparound settings.

Three online evening sessions led by the Primary Behaviour Service

- Wednesday 19 November
- Wednesday 11 March
- Wednesday 17 June

All sessions 7-8pm

[Book here!](#)

If you have specific behaviour management themes that you would like to see, the second and third sessions can be tailored to meet those needs.

Business support

Do you want to talk one-to-one about your wraparound provision?

We are offering virtual business surgeries which are dedicated one-to-one sessions where you can speak directly with our wraparound childcare development officer, Hannah Bailey.

Whether you're just starting out, expanding your business, or seeking advice and insight about your clubs, we're here to support you.

These sessions are available via Microsoft Teams or telephone, and can cover any aspect of business and development - from sustainability and funding, staffing, marketing, and more.

To book a business or inclusion surgery, use the [General Enquiry Form](#)



Inclusion support

Need dedicated time to talk through inclusion needs?

Are you facing challenges that go beyond what can be covered in a quick advice call or email?

Virtual wraparound inclusion surgeries are available with Charlotte Forsyth to discuss any inclusion enquiries which may take longer than 20 minutes to address. This could include navigating tricky transitions, supporting children with emerging needs or looking for strategies.

You do not need to seek consent from a parent or carer to discuss a child in a surgery, however you must not share personal information which identifies a child or family.

The dedicated surgeries offer a one to one meeting, currently delivered either via Microsoft Teams or telephone.

Briefings

Wraparound provider briefings

We are holding two wraparound provider briefings this term via MS Teams. The links will be sent out the week before to all providers, you do not need to sign up.

You only need to attend one briefing as the content will be the same.

- Tuesday 4 November at 1:30pm
- Thursday 6 November at 10am



Designated Safeguarding Lead Support Meetings - Webinars

We would like to invite Designated Safeguarding Leads from your provision to the Summer 2025 Early Years and Out of School Childcare, Designated Safeguarding Lead support meeting/webinar. All sessions are held online.

- Wednesday 5 November - 9:30am
- Tuesday 11 November - 6:30pm
- Thursday 13 November - 1pm

SfYC Calendar of Events
use password SFYC to book

Funding updates

Greater flexibility and one term left to apply

While full wraparound childcare is defined as 8am–6pm, the DfE now allows greater flexibility to fund partial wraparound places that meets the needs of families and as a bridge towards potential full places in the future.

Funding for partial places minimum access requirements:

- Families should be able to access childcare at least three days per week, although the number of places may vary across different days
- Before school must be available for at least 30 minutes
- After school should run for at least 90 minutes beyond the end of the school day
- The number of places may differ between morning and afternoon sessions

Special schools: tailored support available

Special schools can access additional flexibility and funding. This may support shorter sessions or fewer days as schools work towards a fuller offer.

Special schools are encouraged to contact the wraparound team to discuss requirements to trial a wraparound provision for their pupils and the funding requirements for this.

Use the [General Enquiry Form](#) to discuss your individual circumstances

Childcare Additional Needs (CAN) Grant

Grant increase!

The Childcare Additional Needs Grant is closing on 28th February 2026. With this in mind, we have increased the maximum amount that you can apply for to £4500 per child.

The grant can be used towards the cost of:

- additional staffing
- specific resources for children with SEND
- training

If you have a child attending your wraparound setting who requires additional support, you can apply for up to £3000 this term, followed by another top up application of up to £1500 next term.

[See this page for further information and to apply.](#)



Wraparound DSL refresher training

Following feedback from providers, we are very pleased to share that we are offering bespoke, free of charge wraparound DSL refresher training sessions.

These sessions will include both early years and school-based content to ensure you have the most relevant information. Places are limited on these courses.

Designated Safeguarding Lead - Refresher (4.5 hours)

- Online via MS Teams - 23 October 2025 9:45am-2:15pm.
- Face to face at Castle Avenue, Winchester - 26 November 2025 9:45am-2:15pm.

Due to limited capacity, all submissions will be reviewed, and places will be allocated accordingly. You will receive a confirmation email if your booking has been successful.

[Book your place here](#)

Paediatric first aid cost reimbursement

Paediatric first aid is an essential course but often a high cost, especially with the expansion of wraparound childcare.

We are offering a payment of up to £250 towards an appropriate 12-hour paediatric first aid course for 1 place per venue.

This payment is towards the cost of the course and a substitute staff member if needed at the time of the course being undertaken.

Reimbursement will be made upon receipt of the appropriate evidence proof of payment, evidence of course completion and a signed grant agreement.

[To apply for this grant, complete this form.](#)

Moodle training offer

The wraparound training offer is still available on Moodle, free of charge for providers. As well as the free training and resources on Moodle, you can use the booking form below.

This form will be closing in February 2026.

[Wraparound training booking form](#)

eLearning:

- Food hygiene level 2
- Allergy awareness level 2
- Health and safety level 2
- Safer recruitment
- Safer environments

Ethnic Minority and Traveller Achievement Service (EMTAS) Moodle access

Virtual and face to face:

- AET Making Sense of Autism, level 1
 - Virtual via MS Teams
 - Face to face (Spring 2026)
- Understanding Children's Behaviour
 - Virtual via MS Teams
- What's Behind the Behaviour?
 - Virtual via MS Teams



Quality and self-assessments

A huge thank you to all providers who have completed their self-assessments, the passion and pride you have in your wraparound provision is clear to see and showcases the brilliant work you are all doing.

If you completed your self-assessment in round 1, by December 2024, we ask that you complete the annual update this term. The annual update is a shorter form which asks for updates and any new identified actions.

[Annual update form](#)

Autumn Management Information (MI) return

Funded providers only

The autumn MI return will take place in November 2025. We will share the questions with you in October and you will need to submit your responses by 21 November at the latest.

You will be asked about the number of places and attendance for the week commencing 10 November.

If you have not completed an MI return before, this is a requirement of your funding terms and it is a monitoring tool on the expansion of places, it will have no impact on your funding agreement.

Drop-in session
Monday 10 November - 1:30pm
[Sign up here](#)



When is 1:1 not 1:1?

When it's really enhanced ratios in disguise!

Services for Young Children do not promote the use of 1:1 as standard support for children with SEND. This is because...

- The term 1:1 creates unrealistic expectations for parents and settings
- Having an adult with a child constantly can limit children's independence and social development
- The child can become isolated from their peers
- Is the child really receiving individual adult support all the time that they are in the setting?

What we promote instead is...

- An enhanced ratio meaning that there will be staff free to flexibly cover key times during the session
- Children can be supported by all staff using inclusive strategies throughout the session
- Staff training and environmental adaptations
- Child centred planning using small steps and shared goals

1:1



One adult glued to one child
Constant shadowing
Creates dependency
Parents expect a personal assistant

More adults across the setting



Support at key times
Promotes independence
Flexible and responsive
Shared responsibility

For inclusion support and to book an inclusion surgery, use the [General Enquiry Form](#)



What is the Thrive Approach?

The Thrive Approach is a dynamic, developmental, and trauma-sensitive framework designed to meet the emotional and social needs of children.

It is grounded in the belief that children's behaviour is often a response to unmet needs. By focusing on emotional development and providing targeted support, the Thrive Approach aims to help children become more resilient, emotionally regulated, and ready to engage positively with learning and life.



New free eLearning coming soon.

Group Thrive

To support you further, we will soon be advertising Group Thrive. This will be a fully funded offer of two visits to the setting, designed to look at a cohort of children and plan strategies to support the setting as a whole with meeting emotional and social needs. Watch this space!

[Visit the Thrive Website](#)



New: Early years inspection guidance

For use from 10 November 2025

The new toolkit, guidance and inspection information has been published for early years inspections from 10 November 2025.

[Early years inspection: toolkit, operating guide and information](#)

Ofsted have delivered an out of school specific webinar on this, the recording will be posted to the [Ofsted YouTube channel](#) shortly. The webinar recording for nurseries, pre-schools and other registered early years settings is linked below.

[Ofsted webinar recording for registered early years settings](#)

If you have year R children within your wraparound provision, you should be registered on the [early years register](#). If you have questions around registration exemptions, please see the [guidance](#). For further support, please contact us via a [General Enquiry Form](#).

We will be covering the new inspection guidance in more detail within the wraparound provider briefings, please see the briefings section on page 5 of this bulletin for information.

Recruitment campaign

Book your place: Employer's workforce recruitment webinars

Hampshire County Council have worked with partners to develop a webinar specifically for childcare employers, offering practical guidance on recruitment and retention challenges in the childcare and education sector, with funded solutions and impartial workforce advice.

All early years and childcare employers are invited to attend one of these sessions. All webinars will be virtual on MS Teams.

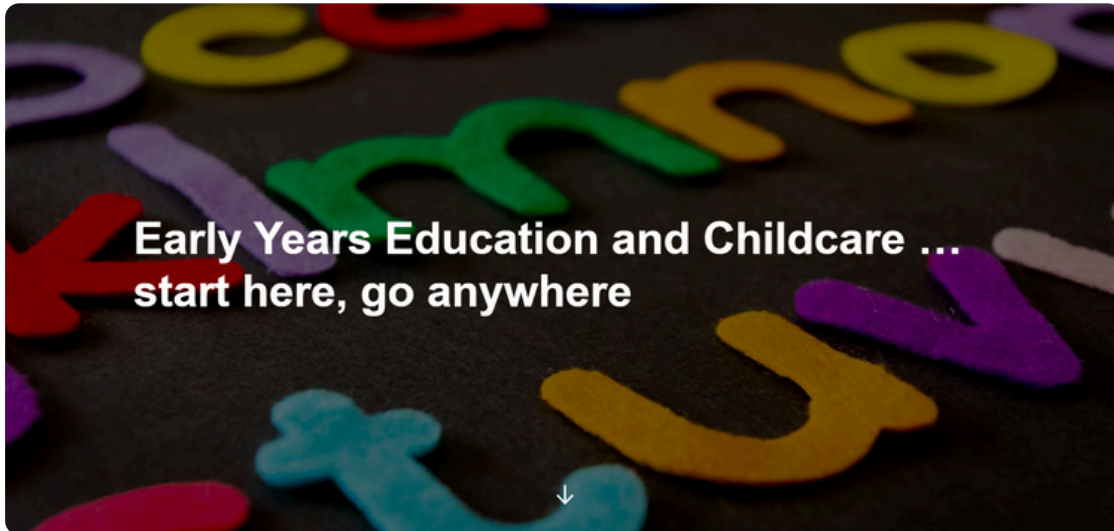
- Thursday 30 October 2025 - 10-11am
- Wednesday 21 January 2026 - 2-3pm
- Tuesday 10 March 2026 - 5-6pm

[Webinar trailer](#)

[Book your place](#)



Announcement: Childcare Workforce Recruitment Toolkit



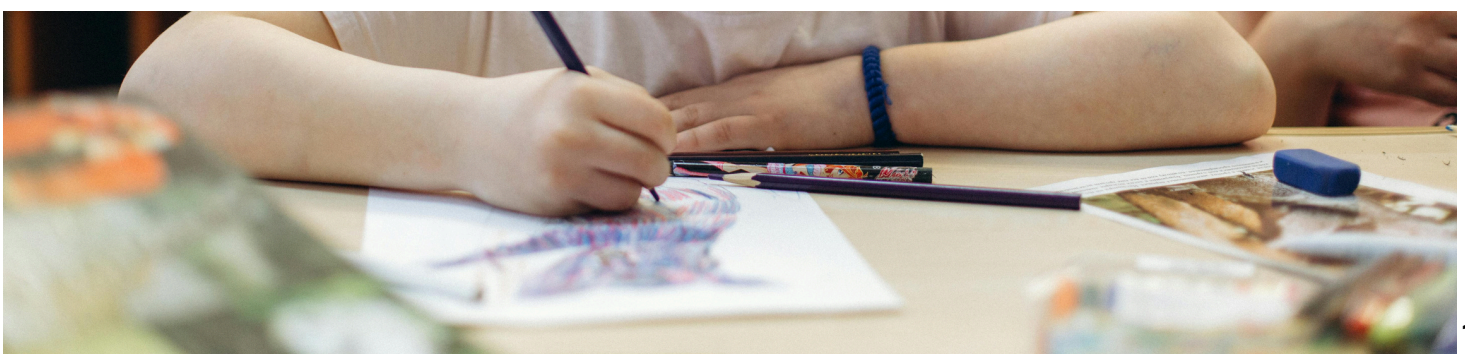
[Access the toolkit](#)

Hampshire County Council are pleased to announce the introduction of our Childcare Workforce Recruitment Toolkit, designed for young people to discover more about starting their career path in childcare.

The toolkit promotes the varied spectrum of roles across the sector and the excellent opportunity to develop skills that are highly sought after.

In addition to boosting the number of qualified staff in the sector, we hope to encourage people to consider childcare as a strong start to their career path.

Careers advisors for schools and colleges in Hampshire will have access to this interactive toolkit to help students explore the possibilities of starting a career in childcare, which could lead to a variety of roles both within childcare and other sectors.



Hampshire social and digital media Campaign Update

Start your career in childcare



Further development has been made to the [Hampshire Early Years and Childcare Careers social media microsite](#).

As well as information about 'Starting your career', check out the interactive case study animations, developed to inspire the future workforce.

There have been several engaging social media posts that have gone out through different channels which link to the Early Years and Childcare Careers website. The examples of which can be found in the last section of the toolkit.



Wraparound recruitment

In October we will be contacting colleges to promote opportunities for students to work in wraparound settings. Roles at before and after school clubs are likely to work well alongside students' college commitments. Make sure your vacancies are advertised on the Gov [Find a job](#) site so that students see opportunities at your clubs.

[Childcare jobs in Hampshire](#)

Are you making the most of the FREE recruitment tools available?

Both the Department for Education's [Do Something BIG](#) recruitment campaign and Hampshire's own campaign directs potential applicants to use the Department for Work and Pensions [Find a Job](#) vacancy platform to search for early years roles in their area. Careers advisors will also support young people to access and use this and other appropriate job sites to see the variety of exciting and varied opportunities in the market.

If you do not already have a *Find a Job* account and have any current or upcoming roles in your setting, please watch these [video tutorials](#) to help you create an employer account and post your jobs... for free.

You should use the term '**early years**' in the title of your job adverts and select '**Education and childcare jobs**' for the job category. Also, check out the Do Something Big campaign tips to help with advertising: [Recruitment resources](#)

Find a job

Sign in Create account Employers Cymraeg

What?
for example job, company, skills

Where?
for example city, county or postcode

[Advanced search](#)

Be part of something big

Working with small children is a big deal. It's a job that makes a difference by helping to give children the best start in life.



Information for parents/carers

Please inform your parents/carers of these items through the communication channels you use.

Best Start in Life

Wraparound should be a paid for service, parents and carers can make use of schemes such as Tax-Free Childcare, Universal Credit Childcare and Childcare for Service Children (WAC).

- Using Tax-Free Childcare, eligible working parents with children 11 or under can get up to **£2000 per child, per year**, towards their childcare costs (or up to **£4000 for disabled children** 16 or under).
- Using Universal Credit Childcare, parents can get up to **85% of childcare costs paid back**.
- Service personnel (Tri-Service) can register for up to **20 hours a week per child** during term time only (39 weeks per year) of wraparound childcare funding for 4 to 11-year-old children (4 to 16 years if in receipt of certain disability benefits) attending before and after school childcare in the UK.

Free breakfast clubs and wraparound childcare



Best Start in Life

The Childcare Choices website
is now the Best Start in Life
parent hub

All parents in England have the right to request that the school their child attends, or is due to attend, consider setting up wraparound or holiday childcare if they do not already have it.

This applies to childcare for children up to the age of 14, or 18 for children with SEND.

The right to request only applies to childcare and does not include activities such as after-school sports clubs, which are less frequent and can be a one-off activity.

Further information

If you have colleagues who do not yet receive this bulletin and would like to, please share this link with them. [Wraparound Bulletin Mailing List](#).

For any support needs, please use the [General Enquiry Form](#).

