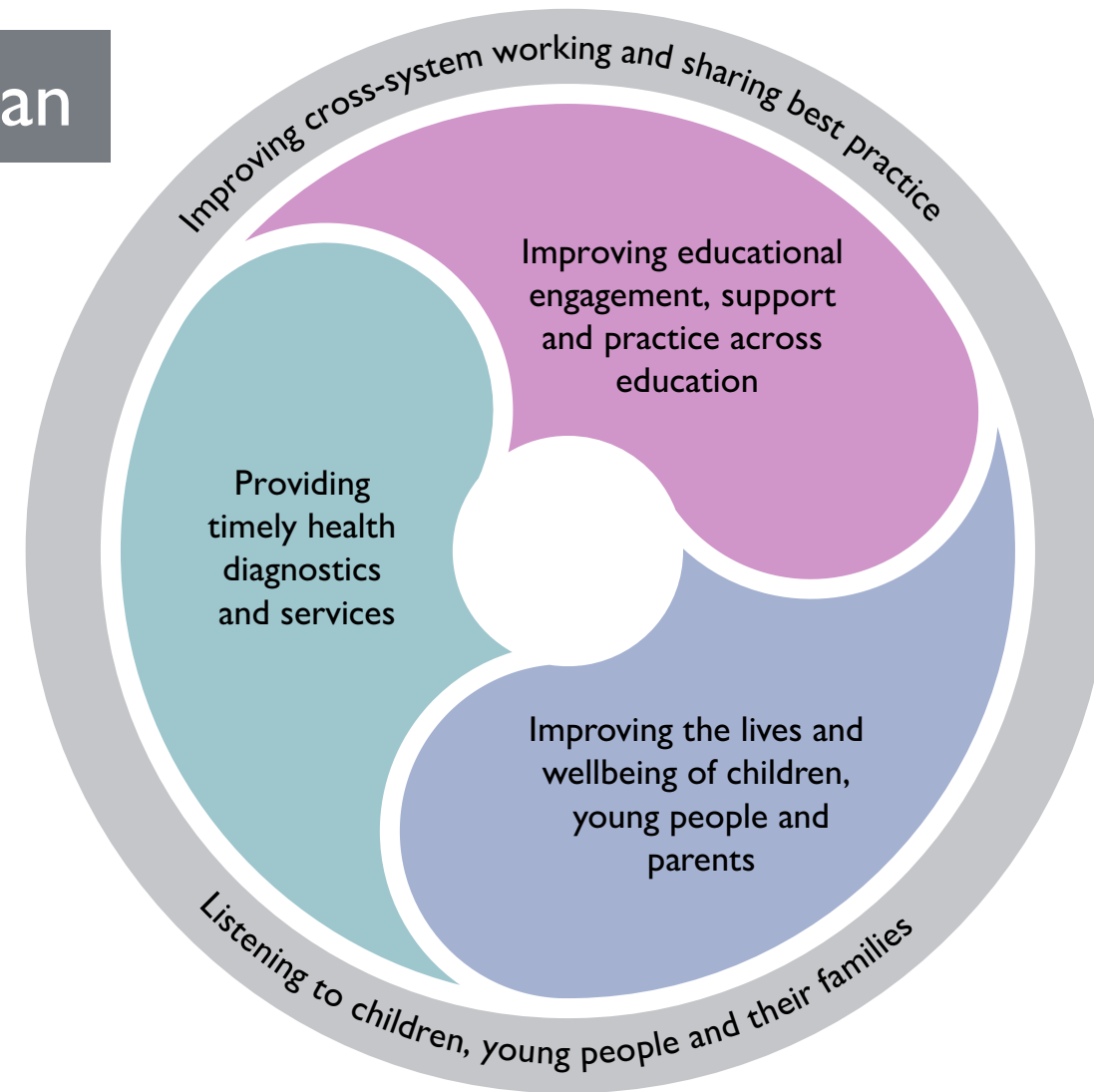


# Hampshire's Local Area Partnership Strategy

## Our vision



## Our action plan



## Our success criteria

### We will know we have succeeded when....

1. The views of children, young people and their families informs all our work.
2. Children, young people and their families can access the information and services they need when they need it.
3. Data is routinely shared, and we all work towards the same goals.
4. Children and young people with SEND are happy and have positive social relationships.
5. Young people with SEND increasingly live independently and gain meaningful employment.
6. There is a culture of support to families and carers.
7. Children and young people with SEND and their families can access services and support that meet their needs at the earliest point, without barriers.
8. The mental and physical health of children and young people with SEND compares positively with their peers.
9. Children and young people with SEND are engaged in their education within an inclusive environment.
10. Everyone in the system, works together to improve educational engagement.
11. A robust, resilient and skilled education workforce can meet SEND needs.
12. Children and young people with SEND and their parents are appropriately prepared for adult life from a young age.
13. There is sufficient provision to meet the needs of all Children and young people with SEND in Hampshire.

## Our approach

**We will achieve our vision through strong multi agency and parental partnerships, having a shared understanding of challenges and working together on solutions.**

### We will measure progress by...

1. Bringing together Health, Education and Social Care data.
2. Tracking and reducing the gap between outcomes for children and young people with SEND and their peers.
3. Annually canvassing parents about their confidence in the system.
4. Annually canvassing professionals about system improvements.
5. Listening to children and young people about what matters to them and acting on their views.

### We will work together well by...

1. Collectively owning the issues.
2. Securing cross-partnership agreement to progress all actions.
3. Spreading the word, creating a system-wide understanding of our ambition.
4. Routinely seeking the voice of all children and young people with SEND.
5. Holding ourselves and each other to account on delivery of our action plan.
6. Monitoring our progress through our Local Area Partnership board.
7. Supporting and be honest with each other.
8. Asking for help to solve systemic problems.
9. Being critical friends for each other.
10. Reducing inequalities.