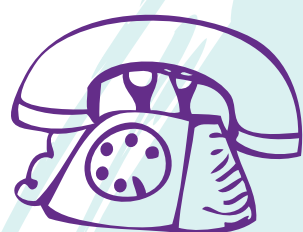


Are you worried about your child's development?

If you think there could be a problem with the way your child walks, plays, learns or speaks, you can call our Advice Line.



0300 300 2019

Our Advice Line can*

- offer reassurance
- give you tips on ways to help
- give you activities to improve your child's skills
- decide if your child needs to be referred to us for a more detailed assessment
- suggest others who can offer you more advice e.g. health visitor or children's centre.

Email: SNHS.SolentChildrensTherapyService@nhs.net

www.solent.nhs.uk/childrenstherapies

Better health, local care

