

2025/2026



Hampshire
County Council

Countryside

Team Days

Connect, enjoy, conserve

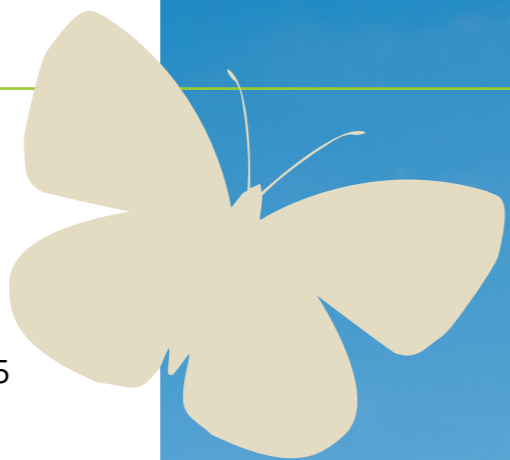



From
£30
Per person
See page 18

hants.gov.uk/countryside

Contents

About us	4 – 5
Why join us?	6
Get involved	7
Team Days	8 – 9
Our country parks and farms	10 – 11
Our wider green spaces	12
Our Rights of Way	13
Our partners	14
What we offer	15
What you need	16
Example day	17
Prices	18
Make a donation	18
Adopt a path	19
How to book	19



Stunning landscape at Staunton Country park

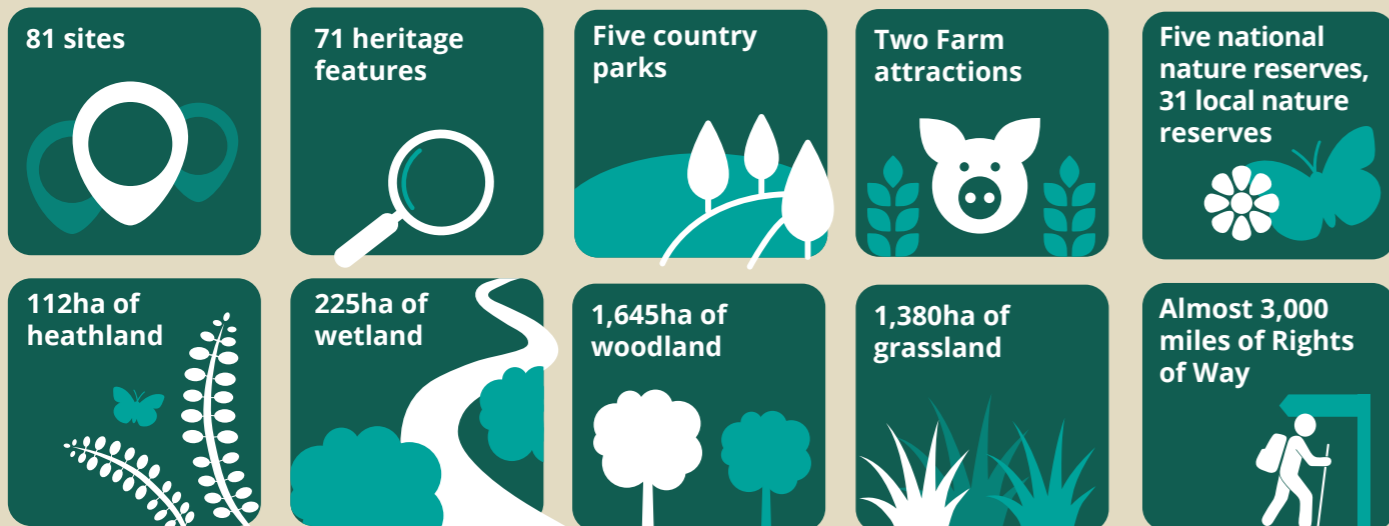
About us

We inspire people to **connect** with and **enjoy** the countryside, while **conserving** Hampshire's wildlife and heritage through nature recovery and climate change initiatives.

We're passionate about what we do and strive to be forward-thinking, dynamic pioneers in countryside management.

We're responsible for the management of 7,400 acres of land, more than 80 sites, 71 heritage features, and almost 3,000 miles of public rights of way.

We're working to protect Hampshire's countryside for future generations to enjoy.



Why join us?

At Hampshire Countryside Service, we're dedicated to conserving and enhancing the natural beauty of Hampshire's countryside.

By partnering with us, you can make a significant and lasting impact on both the environment and local communities.

Choosing Hampshire Countryside Service for your corporate volunteering efforts can contribute towards your company's social responsibility goals:



Environmental stewardship:

Be an active participant in the mitigation of climate change, promotion of species diversity and creation of sustainable ecosystems. Volunteering opportunities include habitat restoration, tree planting, and wildlife conservation.



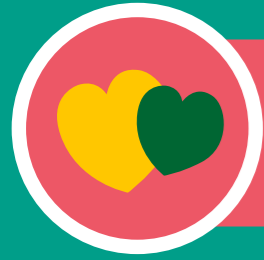
Community engagement:

Investing in your local community is a great way to boost your reputation and build strong relationships. Whether it's working on public access projects, maintaining nature reserves, or organising educational programmes for schools, your employees will have the chance to engage with communities, foster positive relationships and leave a lasting impression.



Employee engagement and development:

Volunteering in the countryside provides fantastic opportunities to boost employee morale, strengthen teams, and for employee development. Working together outdoors promotes skills like communication, teamwork and problem solving, all of which can be taken back into the workplace.



Positive brand association:

Bolster your reputation as an environmentally conscious company to your stakeholders, customers, and wider community, while meeting your corporate social responsibility objectives at the same time.



Long-term impact:

Volunteering with Hampshire Countryside Service allows your company to contribute to long-term sustainable change. Your efforts will directly contribute to the conservation and preservation of Hampshire's natural landscape, leaving a positive legacy for future generations and demonstrating your commitment to environmental and community sustainability.

How can you get involved?

Team days

With three packages to choose from, get stuck into a day at one of our sites, where you could be working on anything from planting trees to installing bridges.



Team days

1. Wild Team Day

Build your perfect corporate volunteering experience with a Wild Team Day at one of our five country parks.

Take on tasks such as surveying wildlife or gardening, while working near accessible toilets and a café serving delicious, fresh meals. Your team will have the opportunity to learn new skills, increase self-esteem, and give back to nature in a beautiful environment.

With your morning tasks completed, treat your team to a delicious lunch**. Visit the country park's café, or hire a BBQ space, or pizza oven for an afternoon social***.

You can also opt for additional afternoon activities** like orienteering or laser tag to make your day truly unforgettable.

Please see [page 15](#) for activity options and further information.



Gardening

Surveying wildlife



Hire a pizza oven



2. Wilder Team Day

Held in more rural green spaces where facilities are limited, Wilder Team Days are great for people who enjoy getting stuck into physical work. Whether you opt for a local nature reserve or a National Nature Reserve, there are plenty of seasonal tasks available.

Bring your own lunch and picnic in the wilds of Hampshire!

Wilder Days are held at our wider sites and consist of a whole day's voluntary work with a lunch break (lunch not provided).

Get stuck in!



Seasonal tasks

Maintenance tasks



3. Really Wild Team Day

A Really Wild Team Day is perfect for a small team that really wants to get back to nature. You'll be helping with the maintenance of our nearly 3,000-mile Rights of Way Network.

Due to the lack of facilities, possible remote location, and the nature of tasks you'll undertake, these days are for groups of up to 10 people.

Bring your own lunch and picnic in the wilds of Hampshire!

Really Wild Days are held on our Rights of Way Network and consist of a whole day's voluntary work with a lunch break (lunch not provided).

**Available at an additional cost
***Available at selected parks

Our country parks and farms

Royal Victoria Country Park is a unique site boasting 200 acres of woodland, parkland, and foreshore. This stunning park, located on the shore of Southampton Water is brimming with a rich variety of plant life and a flourishing animal population.



RVCP chapel

At **River Hamble Country Park** you can spend the day in our fantastic ancient woodland. Enjoy the changing scenery throughout the seasons, from bluebells in the spring to the spectacular colours of autumn, set alongside the beautiful River Hamble.

Stunning views



Located in the New Forest with stunning views across the Solent to the Isle of Wight, **Lepe Country Park** is teeming with unique plants and birdlife.



Great Cafe!

Staunton Country Park is a listed Regency era landscaped parkland and gardens, which once formed part of a country estate with a mansion and pleasure ground. Today, you'll find a walled garden, lake, ornamental bridge, and follies dating back to the 1800s.

Lots to see



Situated in the South Downs National Park, **Queen Elizabeth Country Park** spans over 2000 acres and is dominated by three hills: the chalk downland of Butser and the beautiful woodlands of Holt and War Down.

Vast scenery



Full of history

Manor Farm is steeped in history, the origins of which date back to medieval times. Today, this rich cultural heritage blends with contemporary visitor facilities to create an entertaining, educational, and rewarding day out for people of all ages.



Staunton Farm sits on the historic Staunton Estate, which features beautifully landscaped parkland, tropical glasshouses, and the farm itself. Over the last 200 years several different families have left their mark on the landscape, and these different influences can be uncovered during your visit.

Beautiful landscapes





Our wider green spaces

As well as the country parks and farms, Hampshire Countryside Service **manage 81 green spaces**. Get involved with the local site teams and support the maintenance of Hampshire's countryside.

The tasks available will vary by season. During the winter you might help with removing vegetation from one of our local nature reserves, or in the summer you could assist with survey work, seeing which species make their homes in our National Nature Reserves.

Our Rights of Way

Hampshire Countryside Service's Rights of Way team manage nearly **3,000 miles of public rights of way**, which include footpaths, bridleways, restricted byways, and byways.

Rights of way are open to all pedestrians, so all members of the public have a right to passage. They're places where people can access the countryside and explore it safely, knowing they're not trespassing.



Our partners

On the Basingstoke Canal we work in partnership with the Basingstoke Canal Society (BCS) to offer corporate volunteering opportunities. They provide a tailored package of corporate workdays on the canal with suitably qualified BCS Volunteers or HCC Canal Rangers to support on the day.

The BCS is a registered charity which has been promoting and campaigning for the sustainable future of the Canal as a navigation and public amenity since 1966. BCS volunteers support Hampshire and Surrey County Councils (working in partnership as the Basingstoke Canal Authority) to maintain the 32-mile-long Canal for nature, heritage, and public access.

For more information about days on the Canal with the BCS, visit their website www.basingstoke-canal.org.uk or email enquiries@basingstoke-canal.org.uk.



The Basingstoke
Canal Society



During the volunteering day the team removed three boatloads of hydrocotyle and two and a half black bin liners of litter out of the canal. All litter is then recycled in the correct way. A great day well spent. Thank you to everyone involved!

– Katlin Pecs, Head of Neos Networks



What we offer

Practical tasks

You'll help our rangers look after our diverse sites. The tasks you'll be doing will depend on the season, so they won't be available all year round.

Some of the work you'll be doing could include:

- woodland management
- clearing vegetation to keep footpaths accessible
- invasive species control
- preserving path surfaces
- installing and maintaining gates, boardwalks, bridges, fences, signs, and benches
- planting new native species

Tree planting



Wild Team Day options

Practical activities

- Woodland management
- Wildlife surveying
- Gardening
- Tree planting
- Path work
- Vegetation clearance
- Infrastructure installation

Lunch options

- Café
- BBQ*
- Pizza oven*
- Bring your own



Yum!

Afternoon activities

- Continuing volunteer work
- Team building
- Guided walk
- Orienteering
- Bushcraft/adult forest school
- Staff social
- Laser tag*
- Ebiking*

Guided walk



*Depending on location

What you need to know

Numbers

Wild and Wilder Days are available for up to 20 people depending on the task, location, and season.

Really Wild Days are available for a maximum of 10 attendees.

What we'll provide

- Support from our expert team
- Tools
- Personal protective equipment (PPE)
- Refreshments for a tea break
- Insurance and first aid-trained staff
- Risk assessment

A full health and safety briefing will be given on the day with supporting documents sent to you prior to the task. Your team will gain new skills as well as learning about countryside management.

What you need to bring

- Old clothes, or clothes that you don't mind getting dirty
- Weather-appropriate clothing – waterproof coats for rainy weather or warm layers for colder weather
- Drinks and snacks, especially if you're working in a more remote location with limited/no access to facilities
- Sun protection
- Sturdy shoes or boots (steel toe caps if you have them)



Example day

9:15am

Arrival and welcome. Our rangers will provide an overview of the task and tools to be used.



9:30am – 12:15pm

Work alongside members of the ranger team on a conservation task

11am

Refreshment break



12:15pm – 1pm

Lunch



1pm – 3:30pm

Continue with the conservation task or an alternative afternoon activity if you've chosen that option.

3:30pm

Your day ends with tea, coffee, and time for a team photo



Prices

Prices start from **£30 per person** (or minimum of £250 for the day), to cover the cost of staff resources, tools, and PPE. This will vary depending on the size of your team, the activities you choose, and any other supplementary costs. We'll be able to provide you with a quote upon enquiry.

Afternoon activities for a Wild Team Day are available at an additional cost which will be outlined when making your booking. Alternatively, you can continue with your conservation task in the afternoon for the cost of £10 per person.



Make a donation

Your company can leave a lasting legacy in Hampshire's countryside by sponsoring a piece of infrastructure.

Including:

- Gates
- Boardwalks
- Bridges

For a different kind of volunteering experience, your company can buy and install one of the above, under the supervision of our expert rangers. This unique opportunity gives you the pride and satisfaction of knowing you've improved Hampshire's countryside for everybody.

Prices are dependent on infrastructure type, materials, and labour.



How to book

Fill in the enquiry form with as much detail as possible, and a member of the corporate volunteer team will be in touch with you.

You'll be contacted by a member of our team to sort out the finer details. We'll work with you to design a day that's perfectly tailored to your needs, so this is when you can tell us about anything you might have missed off your form.



Scan to book



Hampshire
County Council

Countryside

Thank you

We hope to hear
from you soon.

hants.gov.uk/countryside