



Annual Biodiversity Monitoring Report 2021/22

Monitoring Change in Priority Habitats, Priority Species and Designated Areas

For Local Plan Annual Monitoring Reports

Including breakdown by district for:

Basingstoke and Deane

Eastleigh

Fareham

Gosport

Havant

Hart

New Forest National Park

Portsmouth

Winchester

Produced by

Hampshire Biodiversity Information Centre

December 2022

Contents

1 Introduction to Biodiversity Monitoring in Hampshire	4
2 Priority habitats	10
3 Nature Conservation Designations	16
4 Priority habitats within Designated Sites	17
5 Condition of Sites of Special Scientific Interest (SSSIs).....	18
6 SINC changes observed and recorded	20
7. SINC in Positive Management (SD 160) - Not reported on for 2021-22	22
8 Changes in Priority Species trends 2012 to (March) 2022.....	24
09 Basingstoke and Deane Borough Council.....	33
10 Eastleigh Borough Council	39
12 Fareham Borough Council.....	45
13 Gosport Borough Council	51
14 Hart District Council	57
15 Havant Borough Council.....	63
17 New Forest National Park Authority	69
18 Portsmouth City Council	76
22 Winchester City Council	82

This page is intentionally left blank.

1 Introduction to Biodiversity Monitoring in Hampshire

1.1 Background

The Localism Act 2011 Section 113 requires every local authority to produce an Authority Monitoring Report containing information on a number of topics including the progress and effectiveness of the Local Plan, and the extent to which the planning policies set out in the Local Plan documents are being achieved. This can include policies covering biodiversity and nature conservation.

Reporting annually enables communities and interested parties to be aware of progress in these areas.

In addition, the **National Planning Policy Framework (Section 179)** states that to protect and enhance biodiversity and geodiversity, (local) plans should:

- a) Identify, map and safeguard components of local wildlife-rich habitats and wider ecological networks, including the hierarchy of international, national and locally designated sites of importance for biodiversity; wildlife corridors and stepping-stones that connect them; and areas identified by national and local partnerships for habitat management, enhancement, restoration or creation; and
- b) promote the conservation, restoration and enhancement of priority habitats, ecological networks and the protection and recovery of priority species; and identify and pursue opportunities for securing measurable net gains for biodiversity

The enhanced **Biodiversity duty within the NERC Act as set out in the Environment Act 2021** will require the production of a Biodiversity Report which will need to report every 5 years (initially 3 years) on how each authority has complied with these new duties, what action has been taken and a summary of Biodiversity Net Gain (BNG) activity. This comes into force January 2023

The Hampshire Biodiversity Information Centre (HBIC) provides comprehensive information relating to biodiversity in Hampshire which can contribute to all the above, working in partnership with both data users and data providers for public benefit.

HBIC can monitor and measure change (gains and losses) in areas of designated sites and habitats by district/borough/unitary through the information it gathers and maintains on a Geographic Information System (GIS) linked to various databases.

HBIC can also provide information on species distribution and trends across Hampshire through the data it holds on behalf of its partner species recording groups and in consultation with them.

This report continues, as in previous years, to provide annual statistics to local authorities in order to record and monitor changes in priority habitats, designated sites and selected notable species.

1.2 Explanatory Notes

1.2.1 Mapping change in extent of priority habitat:

The full extent of priority habitats in Hampshire is not fully known and will never be fully known due to the dynamic state of our countryside, on-going development and time lags between surveys, and the difficulties of obtaining access to many areas. HBIC is working with its funding partners to continually improve information on Priority habitat extent and condition through its Habitat Survey Programme and from other survey data that becomes available. This information is used by HBIC to maintain GIS layers mapping the extent of broad and priority habitats in Hampshire.

The habitat data is snapped to OS MasterMap (OSMM) polygons the version of which was becoming out of date, so in 2019 HBIC embarked on a project to translate the data into a more recent version. This has been a major undertaking given the hundreds of thousands of OSMM polygons where the habitat has needed to be verified following the translation of what was essentially a semi-automated process. It has enabled all recent 'developments' to be 'plugged' into the habitat layer (including new roads, tracks etc) and for all habitat boundaries to be snapped to OSMM boundaries. This has led to further 'losses' in habitat explained below and in the detailed chapters, along with gains where 'unidentified habitat' and gaps in priority habitat have been reviewed and assessed.

There have been some on-going problems correcting the OSMM translation linked to issues with the habitat data capture tool. However most significant errors have been corrected, but there still remain a few which HBIC will continue to work on.

Reasons for change are logged along with changes to SINCs where they have been recently re-surveyed. These can include losses of habitat to development, agricultural improvement or abandonment. Often it can just be a correction.

HBIC, along with many other local environmental records centres, has been mapping its habitats using a classification system called IHS (Integrated Habitat System). Defra has now mandated that a new classification, UKHab, is to be used to assess biodiversity net gain using Metric 3. It is fairly certain that HBIC will have to move to that system. As it is not a straightforward 1:1 translation from IHS categories to UKHab categories there will continue to be changes to the baseline which are solely due to the re-interpretation of IHS data into UKHab.

The habitat dataset is used for all HBIC's work; for data requests, screening planning applications etc., and to produce this monitoring report. It will also form the baseline for the forthcoming Local Nature Recovery Strategy and Hampshire's Nature Recovery Network Map

1.2.2 Revised UK List of Priority Habitats:

A further 16 Priority habitats were added to the UK List (NERC S41 list) during the 2011-12 period. For Hampshire, this included 'Traditional Orchards' and 'Open mosaic habitats on previously developed land', along with an expansion in scope and definition of 'Hedgerows', 'Ponds' and 'Rivers'. A set of traditional orchard polygons created by the People's Trust for Endangered Species is currently being ground

truthed before being added to the GIS dataset. Similarly, for a reed bed dataset produced by the RSPB. Open mosaic habitat was added to the HBIC layer for the first time in 2021.

1.2.3 Reasons for change in extent of Priority Habitat since the 2020/21 Report

Whilst for most Priority habitats there continues to be small changes in extent, as a result of new field survey or aerial photographic interpretation, for several habitats there have been more significant changes in extent as a result of the recent OSMM update which are summarised below.

Lowland Mixed Deciduous Woodland – a further small loss of 89ha largely due to translation to newer version of OSMM removing all hard surface tracks and losses to gardens and other development; ongoing removal of small clumps and strips which do not meet the criteria (>0.25ha and 5m width); and some reinterpretation of data to Beech Woodland and Wet Woodland categories

Wood Pasture & Parkland – small gain of 67ha mostly due to adding and losing tiny areas as part of an ongoing tidying up exercise, mostly within the New Forest.

Lowland meadow – lost 26 ha but gained 25ha of Purple Moor Grass/Rush Pasture from some re-interpretation and new surveys. Recent surveys are still indicating some small losses due to improvement or lack of management.

Lowland Acid Grassland and Lowland Heath - gained 103ha and 282ha respectively through ongoing work interpreting SSSI condition assessments or aerial photos where plantations have been cleared and heathland/acid grassland is recovering well. Also ongoing filling in gaps for 'unidentified habitat'.

Coastal and Floodplain grazing marsh – large 'loss' of 1,572ha, mainly floodplain grazing marsh not found to lie predominantly in the floodplain and/or now arable.

Intertidal mudflats – loss of 214ha largely remapped as seagrass beds(+300ha) having incorporated more recent data provided by the Hampshire & Isle of Wight Wildlife Trust.

1.2.4 Mapping change in priority habitat extent due to development:

As mentioned previously, it is difficult to identify changes in habitat extent that have occurred solely due to the impact of development, particularly within a given year, without further resources. A GIS layer of the boundaries of all planning permissions from the previous year would be needed, which would need to show the actual footprint of each development with any losses. Measuring habitat gain through restoration/re-creation conditions would itself take many years to assess and map. Meanwhile, the reasons for changes in habitat extent observed from field survey are being logged but may often be due to development or some other land use change which occurred since the last field survey – some 10-20 years ago. Updating the habitat layer with the new OS MasterMap has helped remove more recent development from the habitat layer as will future efforts to secure and map 'measurable' biodiversity net gain as set out in the NPPF and Environment Act.

1.2.5 Assessment of changes in SSSI condition:

The condition of priority habitats is known for those habitats designated as Sites of Special Scientific Interest (SSSIs) as Natural England conduct condition assessments on SSSIs on a rolling programme. Information on the SSSI condition assessment units is available on the DEFRA MAGIC website and has been summarised at the precise District level in this report.

1.2.6 Mapping changes in Sites of Importance for Nature Conservation:

HBIC has responsibility for proposing, mapping and monitoring SINC, and for maintaining an up-to-date GIS layer on behalf of the local planning authorities. HBIC's SINC database records new SINC, deleted SINC and any amendments to existing SINC, including major changes as a result of recent survey or minor changes to boundaries as a result of more precise snapping to OS MasterMap. Many of the amendments and deletions will relate to changes that may have occurred many years before the sites were re-surveyed but were only recorded and approved during this reporting period - the same as applies to mapping changes in habitat extent.

It should be noted that the data within this report excludes sites which have been approved for SINC status by the SINC Advisory Panel, but which remain as candidate SINC due to objections from landowners who wish to submit their own evidence to the Panel. They are however shown on GIS updates to partners as Candidate SINC. Any changes to SINC during the 2021-22 period are described in full in the detailed District chapters.

It should also be noted that the baseline figure for total number of SINC this year has decreased from 4154 to 4109 largely due to a error back in 2016 to remove a number of 'deleted' Brent Geese sites in Havant from the total figure. There were also some errors in wrongly labelling 'new' SINC as 'amended' SINC when split from existing SINC. Figures given for last year were also wrong as no SINC Panel took place that year and the number given were from the May 2021 Panel. They have therefore been brought forward to this year along with some additional ad hoc approvals by the Panel.

1.2.7 Mapping change in notable species populations:

HBIC holds over 9 million species records for Hampshire, a number that is increasing rapidly, as on-line recording becomes common place. Whilst it can be difficult to detect species trends at the County level, let alone at a district level, a suite of 50 species have been chosen for which there appears to be good data and for which there is wide geographic spread. It has been agreed that population trends for the 50 species should only be gathered every 5 years. The next review has been undertaken for the 2012-2022 period up to March 2022 and is reported in section 8

1.2.8 Source/date for habitat and designations data:

All statistics are based on the HBIC GIS layers archived at the end of March 2022 and compared with the previous year's archive except for the SINC data which is derived from the SINC database once Panel approval has been given during the 2021-22 year.

1.2.9 The New Forest:

The New Forest National Park Authority area (which includes a small part of Test Valley and Wiltshire) and the New Forest District Council area are treated separately.

1.2.10 The South Downs National Park:

Only part of the SDNP lies within Hampshire, therefore separate analysis has not been done for that part of the National Park.

2 Priority habitats

Table 1: Extent of Priority habitats in Hampshire (as at 31st March 2022)

Priority Habitat	Comments on Status	BDBC	EBC	EHDC	FBC	GBC	HDC	HvBC	NFDC	NFNPA	PCC	RBC	SCC	TVBC	WCC	Total Area (ha)	% of total Hants area	2020/21 Total area (ha)	Change in area (ha)
Grasslands																			
Lowland Calcareous Grassland	Comprehensive	227		333	16		2	4	285	0	55		1	757	346	2,026	0.5	2,028	-2
Lowland Dry Acid Grassland	Comprehensive. Some overlap with Lowland Heath	24	0	166	6	10	195	21	40	3,133	7	58	2	34	14	3,710	1.0	3,607	103
Lowland Meadows	Comprehensive. Some overlap with Coastal and Floodplain Grazing Marsh and with Wood-Pasture and Parkland.	151	64	133	19	33	108	34	167	278	25	43	23	137	296	1,511	0.4	1,537	-26
Purple Moor Grass and Rush Pastures	Comprehensive. Some overlap with Coastal and Floodplain Grazing Marsh.	41	47	20	5	1	152	9	32	1,043		14	2	136	91	1,593	0.4	1,568	25
Heathlands																			
Lowland Heathland	Comprehensive. Some overlap with Lowland Dry Acid Grassland	167	6	765	2	4	311	1	598	10,142		133	2	24	2	12,157	3.1	11,875	282

Priority Habitat	Comments on Status	BDBC	EBC	EHDC	FBC	GBC	HDC	HvBC	NFDC	NFNPA	PCC	RBC	SCC	TVBC	WCC	Total Area (ha)	% of total Hants area	2020/21 Total area (ha)	Change in area (ha)
Woodland, wood-pasture and parkland																			
Lowland Beech and Yew Woodland	Not complete. On-going work to distinguish from Lowland Mixed Deciduous Woodland.	8.7	0.7	251.1			0.4		2.2	94.3			0.1	52.2	35.4	444.0	0.1	438	6
Lowland Mixed Deciduous Woodland	Ongoing as all ancient and non- ancient woodland has been included yet not all surveyed for qualifying NVC types. Also ongoing to remove small clumps.	6,060	509	5,350	459	71	2,520	190	1,559	6,578	7	254	266	5,714	5,948	35,485	9.1	35,574	-89
Wet Woodland	Fairly complete. Areas will exist in LMDW that have not yet been surveyed for qualifying types	427	166	239	53	22	146	38	68	491	1	67	61	187	239	2,205	0.6	2,195	10
Wood-Pasture and Parkland	Not complete. Further work needed to classify all remaining habitat within historic parkland.	506	1	66	22	15	203	4	3	4,381	8		57	103	118	5,487	1.4	5,420	67



Priority Habitat	Comments on Status	BDBC	EBC	EHDC	FBC	GBC	HDC	HvBC	NFDC	NFNPA	PCC	RBC	SCC	TVBC	WCC	Total Area (ha)	% of total Hants area	2020/21 Total area (ha)	Change in area (ha)
Arable, orchards and hedgerows																			
Arable Field Margins	Incomplete. Figures only show SINCs on arable land designated for rare arable plant assemblages.	[27.4]	[0.0]	[12.5]	[0.0]	[0.0]	[5.0]	[22.5]	[0.8]	[0.0]	[0.0]	[0.0]	[0.0]	[23.5]	[2.2]	[93.9]	0.0	[94]	0
Open Mosaic Habitats on Previously Developed Land	No comprehensive evaluation yet carried out. Two sites with HBIC field surveys.	1												32		33	0.0	33	0
Hedgerows	No comprehensive information for Priority hedgerows. All hedgerows mapped as linear features (km)	[2,712]	[301]	[2,134]	[265]	[25]	[919]	[200]	[2,104]	[1,922]	[66]	[11]	[12]	[2,741]	[3,036]	[16,448]	n/a	[16,448]	0
Traditional Orchards	Work to be undertaken to incorporate areas identified by PTES.		0.3											0.5		0.0	0.0	0	0
Open waters																			
Ponds¹	No comprehensive information yet available. Only from field surveys.	0.1	0.1	18.6	1.1	2.0			34.8			0.4	0.3	25.9		83.0	0.0	64	19

Priority Habitat	Comments on Status	BDBC	EBC	EHDC	FBC	GBC	HDC	HvBC	NFDC	NFNPA	PCC	RBC	SCC	TVBC	WCC	Total Area (ha)	% of total Hants area	2020/21 Total area (ha)	Change in area (ha)
Rivers	Incomplete data. Figures for Chalk Rivers now digitised from latest OSMM polygons as Ha not from EA linear (km) as previously.	61	26	15	9		46		96	28			3	180	121	585	0.2	587	-2
Wetlands																			
Coastal and Floodplain Grazing Marsh	Work ongoing to verify all qualifying grazing marsh. Some overlap with Lowland Meadows and with Purple Moor Grass and Rush Pastures.	710	262	490	306	69	510	158	1,356	1,132	88	27	17	1,744	907	7,776	2.0	9,348	-1,572
Lowland Fens	Comprehensive.	3		18		0	11		9	1,858				5	5	1,909	0.5	1,901	8
Reedbeds	Not complete as OSMM translation inaccurate in places.	2.0	9.2		46.4	13.9	1.1	1.8	40.4	59.6	19.4	0.4	3.8	34.0	19.9	251.0	0.1	248	3

¹ UK BAP Priority Habitat Descriptions (Standing Open Waters & Canals) (2008) | JNCC Resource Hub



Priority Habitat	Comments on Status	BDBC	EBC	EHDC	FBC	GBC	HDC	HvBC	NFDC	NFNPA	PCC	RBC	SCC	TVBC	WCC	Total Area (ha)	% of total Hants area	2020/21 Total area (ha)	Change in area (ha)
Coastal																			
Coastal saltmarsh	Near comprehensive, ongoing checking with OSMM and APs.		30		29	29		209	158	374	53		2	2	2	888	0.2	895	-7
Coastal Sand Dunes	Comprehensive.		0.1			0.4		39.5	2.0	5.3	0.3		0.2			47.0	0.0	47	0
Coastal Vegetated Shingle	Comprehensive.		3.4		12.0	62.5		46.6	19.6	46.9	20.9		2.7			215.0	0.1	216	-1
Intertidal mudflats	Near comprehensive, ongoing checking with OSMM and APs.		164		277	107		1,239	406	842	1,065		128		6	4,234	1.1	4,448	-214
Maritime Cliff and Slopes	Comprehensive.				1.4			0.8	37.1	1.8						41.0	0.0	42	-1
Saline lagoons	Comprehensive.				3.1	11.0		5.8	4.4	44.1	3.6		0.0			72.0	0.0	57	15
Marine																			
Seagrass beds	Comprehensive. HIOWWT data incorporated.				20.7	0.4		197.8		4.1	125.3					348.0	0.1	48	300
Total		8,389	1,289	7,865	1,288	451	4,206	2,199	4,918	30,536	1,479	597	571	9,168	8,150	81,100	21.0	82,176	-1,076



Notes:

1. The extent of Priority habitat remains at 21% of the total area of Hampshire and the New Forest National Park area.
2. The Combined total area of Hampshire (to LWM) & NF National Park is 388,467 ha.
3. The Hampshire and LPA totals of Priority habitat are the sum of the individual Priority habitat types (excluding Arable Field Margins and Hedgerows). This is not the total area of land covered by Priority habitat because some Priority habitat types may overlap and hence are double counted.
4. The figures for some Priority Habitats have changed quite significantly – see section 1.2.3. The recent upgrade to the latest OSMM has ‘tidied up’ the layer but has also prompted changes whereby additional use of aerial photos for example with floodplain grazing marsh has confirmed it is not Priority Habitat. HBIC has also used SSSI condition assessment habitat data in order to update the layer in areas where there were no HBIC field surveys. Other Changes in Priority Habitat areas are result of new survey information whereby the changes may have taken place over a long period of time, anything between 5 and 20 years or when the last survey was undertaken or may have been a re-interpretation of data.
4. Salt-marsh and inter-tidal mudflat figures are not totally comprehensive and require more checking with APs at low tide, they should be added together for the time being.
5. Very minor changes in area might not always reflect real change because of the rounding of figures.
6. The rounding of figures may also not reflect the more detailed figures given in the district accounts.

3 Nature Conservation Designations

Table 2: Extent of Nature Conservation Designations in Hampshire (as at 31st March 2022)

Designation	BDBC (ha)	EBC (ha)	EHDC (ha)	FBC (ha)	GBC (ha)	HDC (ha)	HvBC (ha)	NFDC (ha)	NFNPA (ha)	PCC (ha)	RBC (ha)	SCC (ha)	TVBC (ha)	WCC (ha)	Total area (ha)	% of Hants	2020/21 Total area (ha)	Change in area (ha)
LNR	267	242	338	418	40	76	218	32	416	118	2	48	102	103	2,420	0.62	2,420	0
NNR	23		358	120		31		339	1,142					103	2,116	0.54	2,173	-57
RAMSAR		184		540	165		2,430	1,629	30,151	1,708		111	52	23	36,993	9.52	36,993	0
SAC		296	1,540	195	4		2,269	614	30,641	542		20	788	182	37,091	9.55	37,089	2
SPA		590	1,757	595	230	2,099	2,556	2,323	30,122	2,093	451	655	599	23	44,093	11.35	44,093	0
SSSI	806	427	2,710	563	265	2,696	2,677	2,571	32,189	1,787	471	216	1,868	1,313	50,559	13.02	50,559	0
Stat Sites Combined	883	1,001	2,812	770	335	2,724	2,724	3,188	32,266	2,172	474	795	1,927	1,365	53,436	13.76	53,447	-11
SINC	6,279	823	6,161	610	358	2,025	551	2,451	3,033	339	445	425	5,760	6,463	35,723	9.21	35,742	-19

Notes:

1. One NNR was undeclared in August 2021 : Kingston Great Common in the New Forest National Park
2. A total of 11 new SINC's were approved by the SINC panel and designated during 2021/22. One SINC was deleted. The net decrease in overall SINC area was 19 ha
3. The figures include the open water (sea) parts of the SPA 'Solent and Dorset Coast'.
4. The statutory sites data was downloaded from Natural England on 1st April 2022, so the data has been considered to be as at 31st March 2022
5. The area totals for 'Statutory sites combined' do not equal the total for each of the individual statutory site designations for each district because there is often an overlap between statutory designations

4 Priority habitats within Designated Sites

Table 3: Extent of Priority habitats within Designated Sites in Hampshire (as at 31st March 2022)

Designated Sites	BDBC (ha)	EBC (ha)	EHDC (ha)	FBC (ha)	GBC (ha)	HDC (ha)	HvBC (ha)	NFDC (ha)	NFNPA (ha)	PCC (ha)	RBC (ha)	SCC (ha)	TVBC (ha)	WCC (ha)	Total area (ha)	% of total Priority Habitat	2020/21 Total area (ha)	Change area (ha)
Priority habitat within Statutory sites combined	660	535	1,711	633	228	1,210	1,799	2,156	25,984	1,375	183	278	1,552	1,097	39,401	48.58	38,932	469
Priority habitat within SINC	4,272	537	3,402	412	179	1,381	309	1,597	1,844	178	227	259	3,703	3,887	22,187	27.36	22,035	152
Total combined	4,897	1,024	5,057	950	397	2,570	2,096	3,566	27,819	1,438	407	494	5,098	4,943	60,756	74.91	60,137	619
% of total Priority Habitat covered by all designations	58	79	64	74	88	61	95	73	91	97	68	87	56	61	75		73	

Notes:

1. The total area of Priority Habitat in Hampshire (to LWM) & NF National Park = 81,069 ha.
2. The area totals for 'Total combined' designated sites do not equal the sum of the 'statutory sites combined' and 'SINC' figures for each district and the total for Hampshire because there is some overlap between statutory designated sites and SINC's e.g. Dibden Bay
3. The amount of Priority Habitat covered by all designations has increased by 2%. It does still mean there is c25% Priority Habitat (not all verified) that is not designated.

5 Condition of Sites of Special Scientific Interest (SSSIs)

Table 4: Condition of Sites of Special Scientific Interest (SSSIs) in Hampshire (as at 31st March 2022)

District	Favourable		Unfavourable Recovering		Unfavourable No Change		Unfavourable Declining		Part Destroyed		Destroyed		Grand Total
	Area (ha)	Area (%)	Area (ha)	Area (%)	Area (ha)	Area (%)	Area (ha)	Area (%)	Area (ha)	Area (%)	Area (ha)	Area (%)	Area (ha)
Basingstoke & Deane	485	60.2%	239	29.68%	73	9.04%	9	1.08%		0%		0%	806
Eastleigh	191	44.81%	145	33.88%	84	19.68%	6	1.41%		0%	1	0.22%	427
East Hampshire	1,586	58.5%	1,086	40.05%	27	0.99%	13	0.47%		0%		0%	2,712
Fareham	259	45.96%	134	23.82%	165	29.39%	5	0.84%		0%		0%	563
Gosport District	57	21.34%	84	31.65%	120	45.33%		0%		0%	4	1.68%	265
Hart	1,595	59.17%	1,014	37.61%	36	1.33%	45	1.66%	6	0.24%		0%	2,696
Havant	59	2.21%	1,695	63.32%	51	1.9%	872	32.57%		0%		0%	2,677
New Forest District	1,210	47.07%	765	29.75%	528	20.55%	68	2.63%		0%		0%	2,571
New Forest NP	17,175	53.36%	12,892	40.05%	1,406	4.37%	714	2.22%		0%	2	0.01%	32,189
Portsmouth	169	9.43%	869	48.62%	748	41.85%		0%		0%	2	0.1%	1,788
Rushmoor	98	20.7%	368	78.02%		0%	6	1.29%		0%		0%	472
Southampton	111	51.28%	102	47.29%	3	1.43%		0%		0%		0%	216
Test Valley	363	19.43%	1,256	67.22%	216	11.56%	33	1.79%		0%		0%	1,868
Winchester	417	31.73%	616	46.87%	182	13.85%	91	6.95%		0%	8	0.59%	1,314
Grand Total	23,775	47%	21,265	42.1%	3,639	7.2%	1,862	3.7%	6	0%	17	0%	50,564

Summary:

1. The total amount of SSSI in Hampshire in 'Favourable' or 'Unfavourable Recovering' condition now lies at 89.1%, a decrease of 1.89% from 2020-21.
2. The total amount of SSSI in each District may differ from Natural England figures because NE do not always assign separate portions of SSSIs to the correct District; where the majority of a SSSI occurs within another District (and hence is assigned to that District) HBIC will clip the SSSI management units exactly to the district boundaries
3. There are minor discrepancies in totals for LPA area compared to the LPA detailed tables because of different rounding levels.
4. Area of SSSI lost/destroyed has increased in recent years due mapping updates to reflect SSSI boundaries overlying development, underlying the M3 etc.

Table 5: Percentages for SSSIs in Favourable and Unfavourable Recovering condition in Hampshire (as at 31st March 2022)

District	%SSSI in 'Favourable' or 'Unfavourable Recovering' condition		
	2020/21	2021/22	Change
Basingstoke & Deane	91.91%	89.88%	-2.03%
Eastleigh	80.11%	78.69%	-1.42%
East Hampshire	98.22%	98.55%	0.33%
Fareham	69.77%	69.77%	0%
Gosport District	52.25%	52.99%	0.74%
Hart	95.67%	96.78%	1.11%
Havant	65.09%	65.53%	0.44%
New Forest District	91.28%	76.83%	-14.45%
New Forest NP	95.21%	93.41%	-1.8%
Portsmouth	58.15%	58.05%	-0.1%
Rushmoor	98.71%	98.71%	0%
Southampton	98.57%	98.57%	0%
Test Valley	88.85%	86.65%	-2.2%
Winchester	79.03%	78.6%	-0.43%
Total	90.99%	89.08%	-1.91%

Summary:

1. There were losses in the coverage of 'Favourable' or 'Unfavourable Recovering' SSSIs in the New Forest District area due to more recent assessments.
2. The mudflats within the harbours of Portsmouth and Chichester , and the Hamble Estuary continue to be assessed as 'unfavourable' due to ongoing eutrophication and growth of dense macroalgae mats
3. For Winchester, much of the River Itchen continues to be assessed as 'Unfavourable no change' as it fails on phosphates, macrophyte diversity and bank vegetation.

Information on the condition assessment of Hampshire's SSSIs can be found at <https://designatedsites.naturalengland.org.uk/>



6 SINC changes observed and recorded

Table 6: Extent of changes observed and recorded between 1st April 2021 and 31st March 2022

	SINCs (31/03/2021)		SINCs (31/03/2022)		New SINCs		Amended SINCs		Deleted SINCs		Net change		
	Number	Area (ha)	Number	Area (ha)	Number	Area (ha)	Number	Area (ha)	Number	Area (ha)	Number	Area (ha)	% change in area
BDBC	817	6,263.71	822	6,279.00	5	14.67	1	0.62			5	15.29	0.24
EBC	149	822.84	149	823.05			1	0.21			0	0.21	0.03
EHDC	574	6,157.35	575	6,161.39	1	4.04	2	0.00			1	4.04	0.07
FBC	110	608.81	111	610.18	1	1.37	1	0.00			1	1.37	0.22
GBC	39	373.50	39	357.75			3	-15.75			0	-15.75	-4.41
HDC	282	2,024.59	283	2,024.76	1	0.17					1	0.17	0.01
HvBC	110	551.09	110	551.09							0	0.00	0.00
NFDC	231	2,450.94	231	2,450.94							0	0.00	0.00
NFNPA	395	3,028.16	397	3,033.11	2	4.95					2	4.95	0.16
PCC	26	339.02	26	339.02							0	0.00	0.00
RBC	43	475.05	43	445.48			1	-29.57			0	-29.57	-6.60
SCC	51	424.85	51	424.85							0	0.00	0.00
TVBC	587	5,757.76	587	5,760.03	1	3.19			1	-0.92	0	2.27	0.04
WCC	695	6,464.74	695	6,462.72			3	-2.02			0	-2.02	-0.03
Total	4109	35,742.43	4119	35,723.39	11	28.39	12	-46.51	1	-0.92	10	-19.04	-10.27

Summary:

1. There were 11 new SINC approved by the SINC panel during 2021-22 resulting in an extra 28ha designated.
2. There was 1 SINC approved for deletion by the SINC panel during 2021-22 with a loss of about 0.92ha.
3. There were amendments made with the result of a loss of 46.51 ha
4. Total net change of -19.04ha
5. See individual District tables for details of new and deleted SINC and major amendments to SINC.

Notes:

1. The number and total area of SINC in several districts was incorrect in the last report – see section 1.2.6. This report now uses correct figures.

7. SINC in Positive Management (SD 160) - Not reported on for 2021-22

8 Changes in Priority Species trends 2012 to (March) 2022

Background

Part of this Monitoring report is to present data on the population and distribution trends for a representative sample of 50 of Hampshire's notable species over a rolling ten-year period, to be reviewed every 5 years.

The original core output indicator as requested in government guidance on local authority performance was to measure change in status of species as a result of impact from planning and development. This is not an obtainable figure as the majority of change is due to on-going and cumulative impacts of agricultural practice, climate change, urbanisation, disturbance from recreation etc. Data will simply be presented as a change observed in population status and distribution with statements to explain any change.

Selection of Species

An agreed list of 50 notable species was drawn following consultation in 2006 with the statutory agencies, local authorities and species recording groups in Hampshire. The 50 species are listed in the tables below and cover a range of taxonomic groups; they are representative of the various habitat types present in Hampshire; cover both rural and urban areas; and are relevant to most local authority areas.

Of the 50 species, 31 are UK Priority species and are listed on S41 of the NERC Act 2006, the remainder are also on the Hampshire Notables list, with the exception of one; Redshank, previously on the HBAP list as fast declining but then removed as not considered 'notable' under HBICs criteria². It is however Amber listed and IUCN Vulnerable due to its still declining breeding status so has stayed on the list. Other much rarer species were excluded on the basis they have such a restricted distribution that their relevance to the reporting process would be fairly limited. The bias towards vascular plants, birds and Lepidoptera reflects the large data-sets that already exist for these groups and the ongoing programme of data acquisition. These groups are also sensitive indicators of environmental change and are being used by government agencies and various NGOs for their reporting purposes.

Criteria for Selection

The criterion for selection of species was as follows:

1. Individual species must be on the Hampshire Notables list.
2. They should be representative of a wide range of taxonomic groups.
3. They should be representative of a wide range of UK Priority habitats in Hampshire.
4. Species chosen should have a reasonable distribution (i.e. not just one or two sites)
5. A significant proportion of the species chosen should be found in each District.
6. Species chosen should be sensitive to change (planning, agriculture, climate etc.)
7. Species selected are primarily those for which good data exists, obtained either annually, or through periodic (e.g. 3 year/ 5 year) survey programmes
8. A good number of the selected species are flagship species with wide public interest.

² [Information we hold | Hampshire County Council \(hants.gov.uk\)](https://www.hants.gov.uk) – Full list provided under Item 4

Change in population status

For consistency, the categories used to report on population status have not changed over the past 16 years and match those categories previously used by Defra for national reporting:

- Increasing
- Stable
- Declining* (slowing)
- Declining** (continuing/accelerating)
- Decline? (possibly stabilising)
- Fluctuating/ no clear trend
- Lost
- Unknown/insufficient data

In 2006 the Hampshire Biodiversity Information Centre (HBIC) compiled a baseline set of statistics for the previous ten-year period (1995-2005) for the 50 species in consultation with the species recording groups in Hampshire.

Up until 2012 HBIC had reported annually on the changes observed over the previous rolling 10-year period. **However, since 2013 it was decided to report back every 5 years** on the basis that it was not possible to pick out long term trends in population numbers against short term impacts such as extra cold winters, very wet spring etc. particularly for some of the more under-recorded species. Plus, many major surveys for particular species are often repeated in a comprehensive manner on 5-year intervals rather than every year.

For the year to 31st March 2022 any change in status in the 50 species is as reported for the 20012-2022 period and summarised in Table 8 (last column). From this table the percentage of species in each of the categories is calculated and shown as pie charts in section 8.3.

The following contributors are acknowledged for their assessment of the 50 Species :

Birds : Keith Betton, Hampshire Ornithological Society

Brown-banded carder bee : HBIC/NBN Atlas

Butterflies & Moths : Bob Annell & Dr Andy Barker, Butterfly Conservation

Desmoulin's whorl snail : HBIC - NBN Atlas/British Conchological Society/HBIC records

Dormouse, Water Vole & Brown hare : Andy Rothwell, Hampshire Mammal Group

Flowering Plants inc Eelgrass : Martin Rand, BSBI & HIWWT records

Great crested newt : HBIC & Hampshire & Isle of Wight Amphibian and Reptile Group (HIWARG)

Smooth snake : Karen Haysom, Amphibian and Reptile Conservation

Hornet robber fly and Rufous grasshopper : HBIC/NBN Atlas

Lagoon sand shrimp : HBIC/NBN Atlas

Nail fungus : Eric Janke, Hampshire Fungus Recording Group

Serotine bat : HBIC/Hampshire Bat Group records

Southern damselfly : HBIC/British Dragonfly Society records

Stag beetle : HBIC/PTES/NHM data

NB Those trends shown in [] brackets are where HBIC has made a judgment based on recent data, national trends and previous assessments.

Changes in Distribution by District/Unitary/NPA

Table 9 provides an assessment of all 2012-2022 records by the Hampshire LPAs

Most Authorities have 'lost' between 1 and 5 species whilst one District remained the same, and one 'gained' two species. This reflects similar changes seen over the previous 5 years, partly due to many species remaining at low or declining populations but also lack of recent records for some species, following more intense surveys carried out pre-2012. A closer examination of some 'incidental' records was also carried out and deleted from some areas where appropriate.

8.1 Population Trends of the 50 Hampshire Notable Species

Table 8: Population Trends of Hampshire Notable Species (N = 50) from 2012- (March) 2022

† UK Priority Species (S41 NERC Act)

Categories: Increasing, Stable, Declining* (slowing), Declining** (continuing/accelerating), Decline? (possibly stabilising?), Fluctuating/ no clear trend, Lost, Unknown/insufficient data

Scientific name	Common name	Group	HBAP (Vol.2) 2000	Trend 1995-2005 (assessed 2006)	Trend 2000-2010 (assessed 2011)	Trend 2002-2012 (assessed 2013)	Trend 2007-2017 (assessed 2017)	Trend 2012-2022 (assessed 2022)
<i>Triturus cristatus</i> †	great crested newt	Amphibian	Decline	Decline	Decline**	Decline**	Decline**	[Decline*] ³
<i>Bombus humilis</i> †	brown-band. carder bee	Bee	Decline	Unknown	[Increase]	[Increase]	[Stable]	[Stable]
<i>Lucanus cervus</i> †	stag beetle	Beetle	Decline	Stable	[Stable]	[Stable]	[Stable]	[Stable] ⁴
<i>Alauda arvensis</i> †	skylark	Bird	Decline	Decline*	Stable	Decline	Decline	Decline
<i>Branta b. bernicla</i> †	dark-bellied Brent goose	Bird	Stable	Decline*	Decline	Stable	Stable	Stable
<i>Caprimulgus europ.</i> †	nightjar	Bird	Stable	Increase	Stable	Stable	Stable	Stable
<i>Lullula arborea</i> †	woodlark	Bird	Increasing	Increase	Stable	Stable	Stable	Stable
<i>Luscinia megarhyn.</i>	nightingale	Bird	Decline	Decline?	Decline	Decline	Decline	Decline
<i>Milaria calandra</i> †	corn bunting	Bird	Rapid Decline	Decline**	Decline	Decline	Decline	Increase
<i>Perdix perdix</i> †	grey partridge	Bird	Rapid Decline	Decline**	Decline	Decline	Decline	Decline
<i>Pyrrhula pyrrhula</i> †	bullfinch	Bird	Decline	Stable	Stable	Decline	Stable	Stable
<i>Streptopelia turtur</i> †	turtle dove	Bird	Rapid Decline	Decline**	Decline	Decline	Decline	Decline
<i>Sylvia undata</i>	Dartford warbler	Bird	Stable	Increase	Decline	Increase	Increase ⁵	Increase
<i>Tringa totanus</i>	redshank	Bird	Rapid Decline	Decline**	Decline	Decline	Decline	Decline
<i>Vanellus vanellus</i> †	lapwing	Bird	Rapid Decline	Stable	Decline	Decline	Decline	Decline
<i>Argynnis paphia</i>	silver-washed fritillary	Butterfly	Stable	Stable	Increase	[Increase}	Increase	Stable
<i>Cupido minimus</i> †	small blue	Butterfly	Rapid Decline	Decline*	Decline*	[Decline*]	Fluctuating	Stable
<i>Hamearis lucina</i> †	Duke of Burgundy	Butterfly	Decline	Decline**	Decline*	[Decline*}	Decline**	Decline*

³ The national status of Great Crested Newt is still thought to be Decline (slowing?) and that this applies on a county level.

⁴ [Stag beetle facts: the UK's largest beetle and where to see it | Natural History Museum \(nhm.ac.uk\)](#) Records received from PTES have doubled since 2019 so possibly recovering from a low base or more recorder effort. PTES has started (2022) a 'transect' monitoring scheme to assess change more accurately.

⁵ Dartford Warbler was shown as declining because of the 95% reduction in its population in the Thames Basin and Wealden Heaths as a result of cold winters c2008-9. Prior to that it was increasing and was showing a slow recovery from a low base in the North East of the county. However, the 2018 'Beast from the East' again decimated populations in many areas but now recovering again due to recent milder winters.

Scientific name	Common name	Group	HBAP (Vol.2) 2000	Trend 1995-2005 (assessed 2006)	Trend 2000-2010 (assessed 2011)	Trend 2002-2012 (assessed 2013)	Trend 2007-2017 (assessed 2017)	Trend 2012-2022 (assessed 2022)
<i>Hesperia comma</i>	silver-spotted skipper	Butterfly	Stable	Increase	Fluctuating	[Stable]	Decline	Fluctuating ⁶
<i>Lysandra coridon</i>	chalkhill blue	Butterfly	Decline	Fluctuating	Fluctuating	{Stable}	Fluctuating	Fluctuating
<i>Plebejus argus</i> †	silver-studded blue	Butterfly	Decline	Stable	Stable	[Stable]	Stable	Stable ⁷
<i>Gammarus insensibilis</i> †	lagoon sand shrimp	Crustacean	Decline	Unknown	Unknown	[Unknown]	[Stable]	[Stable] ⁸
<i>Coenagrion mercuriale</i> †	southern damselfly	Dragonfly	Stable	Stable	Stable	[Stable]	Declining	[Stable] ⁹
<i>Asilus crabroniformis</i> †	hornet robberfly	Fly	Decline	Stable	[Stable]	[Stable]	[Stable]	[Stable]
<i>Carex divisa</i> †	divided sedge	Flw Plant	Stable	Stable	[Stable]	Stable	Decline**	Decline
<i>Chamaemelum nobile</i> †	chamomile	Flw Plant	Decline	Stable	[Stable]	Stable	Decline*	Decline ¹⁰
<i>Epipactis phyllanthes</i>	green fl.helleborine	Flw Plant	Decline	Stable	[Decline?]	Decline	Decline**	Decline
<i>Gentiana pneumon.</i>	marsh gentian	Flw Plant	Decline	Stable	[Unknown]	Fluctuating	Fluctuating	Stable
<i>Juniperus communis</i> †	juniper	Flw Plant	Decline	Decline*	[Decline]	Decline	Decline**	Decline
<i>Lithospermum arvense</i>	corn gromwell	Flw Plant	Rapid Decline	Decline*	[Decline]	Decline	Decline*	Decline
<i>Orchis morio</i>	green-winged orchid	Flw Plant	Rapid Decline	Decline*	[Decline]	Decline	Decline*	Decline
<i>Pulicaria vulgaris</i> †	small fleabane	Flw Plant	Stable	Stable	[Decline]	Fluctuating	Fluctuating ¹¹	Decline
<i>Pulmonaria longifolia</i>	narrow leaved lungwort	Flw Plant	Decline	Stable	[Decline]	Decline	Decline**	Decline
<i>Oenanthe fluviatilis</i>	river water-dropwort	Flw Plant	Rapid Decline	Stable	[Decline]	Decline*	Decline*	Decline
<i>Thesium humifusum</i>	bastard toadflax	Flw Plant	Decline	Stable	[Stable]	Stable	Decline**	Decline

⁶ Following range expansion and recolonisation of several new sites in the late 1990s, the Silver-spotted Skipper has had mixed fortunes over recent years. Warm, wet summers and a decline in rabbit pressure at several key sites resulted in increased turf heights in late summer leading to sub-optimal conditions for this short-turf specialist.

⁷ Whilst the overall situation for Silver-studded Blue appears stable, there are growing concerns that overgrazing in parts of the New Forest (particularly round the edges) is causing a decline in numbers and local population loss in smaller habitat patches.

⁸ Trends previously based on a 1997 survey of the Hampshire saline lagoons. A Natural England survey of all lagoons in 2013 recorded its presence at Farlington Marshes (new) and Gilkicker Lagoon, with multiple records within the lagoons at Pennington Marshes. The data was obtained from the NBN Atlas. No new records since 2013

⁹ England picture [Southern damselfly \(Coenagrion mercuriale\) - Special Areas of Conservation \(jncc.gov.uk\)](https://jncc.gov.uk/special-areas-of-conservation/southern-damselfly) and [England information for S1044 - Southern damselfly \(Coenagrion mercuriale\) as part of the Fourth Report by the United Kingdom under Article 17 of the EU Habitats Directive \(jncc.gov.uk\)](https://jncc.gov.uk/england-information-for-s1044-southern-damselfly)

¹⁰ Decline is marked outside the New Forest, where populations are probably stable.

¹¹ Now extinct in VC12 North Hampshire

Scientific name	Common name	Group	HBAP (Vol.2) 2000	Trend 1995-2005 (assessed 2006)	Trend 2000-2010 (assessed 2011)	Trend 2002-2012 (assessed 2013)	Trend 2007-2017 (assessed 2017)	Trend 2012-2022 (assessed 2022)
<i>Zostera marina</i>	eelgrass	Flw Plant	Decline	Unknown	Stable	[Stable]	Stable ¹²	Decline
<i>Poronia punctata</i> †	nail fungus	Fungi	Stable	Stable	Stable	Stable	Declining	Stable ¹³
<i>Gomphocerippus rufus</i>	rufous grasshopper	Grasshopper	Stable	Unknown	[Unknown]	[Unknown]	[Stable]	[Stable] ¹⁴
<i>Arvicola terrestris</i> †	water vole	Mammal	Rapid Decline	Stable	Stable	[Stable]	Stable	Stable ¹⁵
<i>Eptesicus serotinus</i>	Serotine bat	Mammal	Stable	Decline**	[Decline]	Stable	Decline?	Stable ¹⁶
<i>Lepus europaeus</i> †	brown hare	Mammal	Decline	Stable	Stable	[Stable]	Stable	Increasing
<i>Muscardinus avellan</i> †	dormouse	Mammal	Decline	Stable	Stable	[Stable]	Decline*	Decline* ¹⁷
<i>Vertigo moulinsiana</i> †	Desmoulin's whorl snail	Molluscs	Stable?	Stable	Stable	Stable	[Stable]	[Unknown] ¹⁸
<i>Apoda limacodes</i>	festoon	Moth	Decline	Increase	[stable]	Stable	Increase	Increasing
<i>Catocala promissa</i> †	light crimson underwing	Moth	Stable	Stable	[Stable]	Stable	Stable	Increasing
<i>Hemaris fuciformis</i>	broad-bord. bee hawk	Moth	Decline	Stable	[Stable]	Fluctuating	Fluctuating	Decline
<i>Hypena rostralis</i>	buttoned snout	Moth	Decline	Increase	[Stable]	Stable	Increase	Stable
<i>Minoa murinata</i> †	drab looper	Moth	Decline	Stable	[Stable]	Stable	Decline	Fluctuating
<i>Shargacucullia lychnitis</i> †	striped lychnis	Moth	Stable	Stable	[Stable]	Stable	Stable	Fluctuating
<i>Coronella austriaca</i> †	smooth snake	Reptile	Decline	Stable	Unknown	Unknown	Unknown	Decline ¹⁹

¹² Repeat surveys on selected eelgrass beds carried out by HIWWT and the EA suggest these beds are stable. However, there are thought to be local declines in some areas as a result of physical disturbance from fishing activity, which has been highlighted by the Defra European Marine Sites Risk Review for the Solent EMS.

¹³ UK picture http://iucn.ekoo.se/iucn/species_view/198420/ Previously declining, now thought to be stable but more monitoring needed of horse dung in the New Forest

¹⁴ Considered stable but at very low levels – recent records from 2-3 sites nr Winchester and Noar Hill East Hants

¹⁵ Water voles in Hampshire may be considered to be showing a slight trend downwards, despite several recent reintroduction programmes.

¹⁶ HBG are aware of fewer maternity roosts in Hampshire. However, while recorder effort is increasing, is still too low to indicate any clear trends. National Bat Monitoring Programme records Annual report 2021 states that the population of serotine in England is considered to have been stable since 1999. [National-Bat-Monitoring-Programme-Annual-Report-2021.pdf \(bats.org.uk\)](#)

¹⁷ Although many new records have come to light during the last ten years, several of the continuing monitoring programmes have shown a marked decrease in activity and presence, not only in Hampshire but also the neighbouring counties.

¹⁸ HBIC data and British Conchological Society data on the NBN shows no new records since 2003

¹⁹ The New Forest Smooth Snake Survey Group has been running a surveillance project since 2015 to assist with regional conservation status. Awaiting final report 2023 but early observations point to a decline. See also [UK conservation status assessment for S1283 - Smooth snake \(Coronella austriaca\) as part of the Fourth Report by the United Kingdom under Article 17 of the EU Habitats Directive \(jncc.gov.uk\)](#)

8.2 Distribution of the 50 Hampshire Notable Species by District

Table 9: Distribution of Hampshire Species (N=50) from 2012 to (March) 2022

Scientific Name	Common Name	Group	Districts														
			B	EH	E	F	G	Ht	Hv	ND	NP	P	R	S	T	W	
<i>Triturus cristatus</i>	Great Crested newt	Amphibian	✓	✓	✓	✓	✓		✓		✓	✓			✓	✓	✓
<i>Bombus humilis</i> *	Brown-band.carder bee	Bees	✓		✓	✓			✓				✓		✓		
<i>Lucanus cervus</i>	Stag Beetle	Beetles	✓	✓	✓	✓	✓	✓	✓	✓	✓	✓	✓	✓	✓	✓	✓
<i>Alauda arvensis</i>	Skylark	Birds	✓	✓	✓	✓	✓	✓	✓	✓	✓	✓	✓	✓	✓	✓	✓
<i>Branta bernicla bernicla</i>	Dark-bellied Brent Goose	Birds			✓	✓	✓	✓	✓	✓	✓	✓		✓		✓	✓
<i>Caprimulgus europ.</i>	Nightjar	Birds	✓	✓	✓		✓	✓	✓	✓	✓		✓		✓	✓	✓
<i>Lullula arborea</i>	Woodlark	Birds	✓	✓	✓	✓	✓	✓	✓	✓	✓		✓		✓	✓	✓
<i>Luscinia megarhynchos</i>	Nightingale	Birds	✓	✓	✓	✓		✓	✓	✓	✓			✓	✓	✓	✓
<i>Emberiza calandra</i>	Corn Bunting	Birds	✓	✓		✓		✓	✓	✓		✓			✓	✓	✓
<i>Perdix perdix</i>	Grey Partridge	Birds	✓	✓	✓			✓		✓	✓	✓		✓	✓	✓	✓
<i>Pyrrhula pyrrhula</i>	Bullfinch	Birds	✓	✓	✓	✓	✓	✓	✓	✓	✓	✓	✓	✓	✓	✓	✓
<i>Streptopelia turtur</i>	Turtle Dove	Birds	✓	✓		✓		✓	✓	✓	✓	✓			✓	✓	✓
<i>Sylvia undata</i>	Dartford Warbler	Birds	✓	✓	✓	✓	✓	✓	✓	✓	✓	✓	✓	✓		✓	✓
<i>Tringa totanus</i>	Redshank	Birds	✓	✓	✓	✓	✓	✓	✓	✓	✓	✓		✓	✓	✓	✓
<i>Vanellus vanellus</i>	Lapwing	Birds	✓	✓	✓	✓	✓	✓	✓	✓	✓	✓	✓	✓	✓	✓	✓
<i>Argynnis paphia</i>	Silver-washed Fritillary	Butterflies	✓	✓	✓	✓	✓	✓	✓	✓	✓	✓	✓	✓	✓	✓	✓
<i>Cupido minimus</i>	Small Blue	Butterflies	✓	✓		✓		✓		✓	✓	✓	✓	✓	✓	✓	✓
<i>Hamearis lucina</i>	Duke of Burgundy	Butterflies	✓	✓						✓					✓	✓	✓
<i>Hesperia comma</i>	Silver-spotted Skipper	Butterflies		✓						✓					✓	✓	✓
<i>Lysandra coridon</i>	Chalk Hill Blue	Butterflies	✓	✓	✓	✓	✓	✓	✓	✓	✓	✓		✓	✓	✓	✓
<i>Plebejus argus</i>	Silver-studded Blue	Butterflies	✓	✓	✓	✓	✓	✓		✓	✓	✓	✓				
<i>Gammarus insensibilis</i> *	Lagoon sand shrimp	Crustacea					✓					✓	✓				
<i>Coenagrion mercuriale</i>	Southern Damselfly	Dragonflies			✓						✓	✓			✓		✓
<i>Asilus crabroniformis</i> *	Hornet Robberfly	Flies								✓	✓				✓		✓
<i>Carex divisa</i>	Divided Sedge	Flw Plants				✓	✓		✓	✓	✓	✓		✓	✓		

Sharing information about Hampshire's wildlife

The Hampshire Biodiversity Information Centre Partnership includes local authorities, government agencies, wildlife charities and biological recording groups.



Scientific Name	Common Name	Group	Districts													
			B	EH	E	F	G	Ht	Hv	ND	NP	P	R	S	T	W
<i>Chamaemelum nobile</i>	Chamomile	Flw Plants	✓	✓		✓	✓	✓	✓	✓	✓	✓	✓			✓
<i>Epipactis phyllanthes</i>	Green-flowered Helleborine	Flw Plants	✓	✓				✓		✓			✓	✓	✓	✓
<i>Gentiana pneumonanthe</i>	Marsh Gentian	Flw Plants						✓			✓					
<i>Juniperus communis</i>	Juniper	Flw Plants	✓	✓		✓					✓	✓	✓		✓	✓
<i>Lithospermum arvense</i>	Field Gromwell	Flw Plants									✓				✓	✓
<i>Oenanthe fluviatilis</i>	River Water-dropwort	Flw Plants			✓						✓			✓	✓	✓
<i>Orchis morio</i>	Green-winged Orchid	Flw Plants	✓	✓			✓		✓	✓	✓		✓	✓	✓	✓
<i>Pulicaria vulgaris</i>	Small Fleabane	Flw Plants								✓	✓					
<i>Pulmonaria longifolia</i>	Narrow-leaved Lungwort	Flw Plants								✓	✓					
<i>Thesium humifusum</i>	Bastard-toadflax	Flw Plants				✓			✓	✓		✓			✓	✓
<i>Zostera marina/noltii</i>	Eelgrass	Flw Plants				✓	✓		✓		✓	✓				
<i>Poronia punctata</i>	Nail Fungus	Fungi									✓					
<i>Gomphocerippus rufus</i>	Rufous grasshopper	Grasshoppers		✓												✓
<i>Arvicola terrestris</i>	European Water Vole	Mammals	✓		✓	✓	✓	✓	✓	✓	✓	✓	✓	✓	✓	✓
<i>Eptesicus serotinus</i>	Serotine	Mammals	✓	✓	✓	✓	✓	✓	✓	✓	✓	✓	✓	✓	✓	✓
<i>Lepus europaeus</i>	Brown Hare	Mammals	✓	✓		✓		✓		✓	✓	✓			✓	✓
<i>Muscardinus avellan.</i>	Hazel Dormouse	Mammals	✓	✓	✓	✓		✓	✓	✓	✓				✓	✓
<i>Vertigo moulinsiana</i>	Desmoulin's whorl snail	Molluscs														
<i>Apoda limacodes</i>	Festoon	Moths	✓	✓	✓	✓	✓	✓	✓	✓	✓	✓	✓		✓	✓
<i>Catocala promissa</i>	Light Crimson Underwing	Moths			✓						✓	✓	✓		✓	✓
<i>Hemaris fuciformis</i>	Broad-bord. Bee Hawk-moth	Moths	✓	✓				✓		✓	✓		✓		✓	✓
<i>Hypena rostralis</i>	Buttoned Snout	Moths	✓	✓	✓	✓					✓	✓	✓	✓	✓	✓
<i>Minoa murinata</i>	Drab Looper	Moths	✓												✓	✓
<i>Shargacucullia lychnitis</i>	Striped Lychnis	Moths	✓	✓				✓							✓	✓
<i>Coronella austriaca</i>	Smooth Snake	Reptiles		✓						✓	✓					
		Total	32	32	24	28	21	29	23	40	39	28	17	21	38	39
		Previous Total	32	36	26	31	26	27	27	41	40	30	19	25	39	41

Sharing information about Hampshire's wildlife

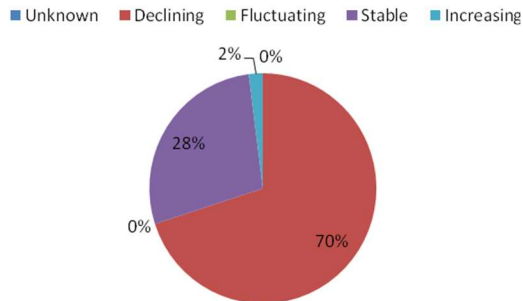
The Hampshire Biodiversity Information Centre Partnership includes local authorities, government agencies, wildlife charities and biological recording groups.



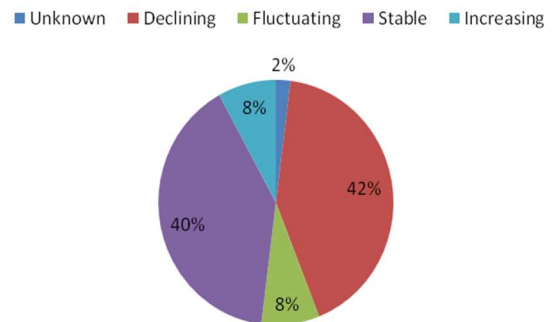
1. '✓' means the species occurs in the district (2012- March 2022), from records held by HBIC and those received from the species groups. 'Occurs' means possible/confirmed breeding or regular sightings in the area. Irregular or transient records are discounted where possible or given '☐' where 3 or less records. '✓✓' means new record (or returning).
2. B = Basingstoke & Deane, EH = East Hampshire, E = Eastleigh, F = Fareham, G = Gosport, Ht = Hart, Hv = Havant, ND = New Forest District, NP = New Forest NPA, P = Portsmouth, R = Rushmoor, S = Southampton, T = Test Valley, W = Winchester

8.3 Summary of trends for the 50 Hampshire Notable Species – assessed in 2022 for the period 2012 – 2022 – see Fig 5

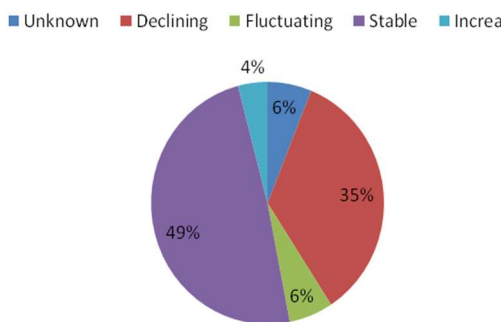
1. Assessed from Hampshire BAP 2000



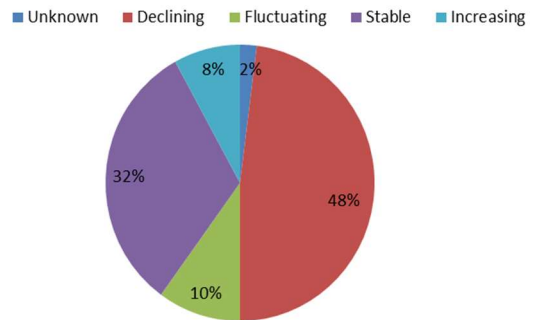
2. Assessed trends for 1995-2005



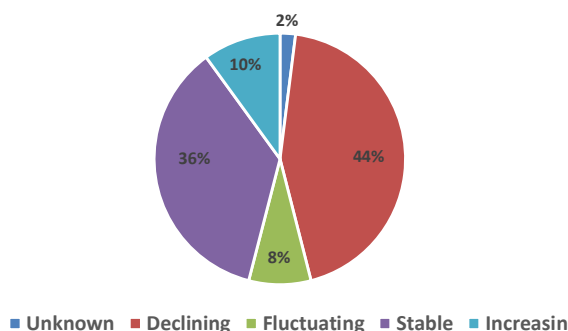
3. Assessed trends for 2002-2012



4. Assessed trends for 2007-2017



5. Assessed trends for 2012-2022



Summary

The last two decades has seen rates of decline increase for several of Hampshire’s notable species.

However, since the last reporting period 2007-2017 **the number of species showing a decline has decreased slightly from 48% to 44%, whilst the number of species showing an increase has increased from 8% to 10%** especially for wider ‘farmland’ species.

One species has remained in the ‘unknown’ category where there have been no new records since 2003.

“Stable” also means that for many species they have stabilised at low (still vulnerable) levels, rather than stabilising at a higher more sustainable level.

The next review will be undertaken in 2027 for the 2017-2027 period.

09 Basingstoke and Deane Borough Council

09.1 Priority habitats

Table 09A: Extent of Priority habitats (as at 31st March 2022)

Priority Habitat	Comments on Status	Combined Hants area (ha)	% of Combined Hants area	BDBC area (ha)	% of BDBC area	2020/21 BDBC area (ha)	Change in area (ha)
Grasslands							
Lowland Calcareous Grassland	Comprehensive	2,026	0.52	227	0.36	225	2
Lowland Dry Acid Grassland	Comprehensive. Some overlap with Lowland Heath	3,710	0.96	24	0.04	24	0
Lowland Meadows	Comprehensive. Some overlap with Coastal and Floodplain Grazing Marsh and with Wood-Pasture and Parkland.	1,511	0.39	151	0.24	150	1
Purple Moor Grass and Rush Pastures	Comprehensive. Some overlap with Coastal and Floodplain Grazing Marsh.	1,593	0.41	41	0.06	38	3
Heathlands							
Lowland Heathland	Comprehensive. Some overlap with Lowland Dry Acid Grassland.	12,157	3.13	167	0.26	167	0
Woodland, wood-pasture and parkland							
Lowland Beech and Yew Woodland	Not complete. On-going work to distinguish from Lowland Mixed Deciduous Woodland.	444	0.11	8.7	0.01	9	0
Lowland Mixed Deciduous Woodland	Ongoing as all ancient/non ancient woodland has been included yet not all has been surveyed for qualifying NVC types. Also ongoing to remove small clumps.	35,485	9.13	6,060	9.56	6,065	-5
Wet Woodland	Fairly complete. Areas will exist in LMDW that are not yet surveyed for qualifying types.	2,205	0.57	427	0.67	419	8
Wood-Pasture and Parkland	Not complete. Further work needed to classify this habitat within historic parkland.	5,487	1.41	506	0.80	522	-16

Priority Habitat	Comments on Status	Combined Hants area (ha)	% of Combined Hants area	BDBC area (ha)	% of BDBC area	2020/21 BDBC area (ha)	Change in area (ha)
Arable, orchards and hedgerows							
Arable Field Margins	Incomplete. Figures only show SINCs on arable land designated for rare arable plant assemblages.	[94]	[0.02]	[27.4]	[0.04]	[27]	[0]
Open Mosaic Habitats on Previously Developed Land	No comprehensive evaluation yet carried out. Two sites with HBIC field surveys, one in Basingstoke.	33	0.01	1	0.00	1	0
Hedgerows	No comprehensive information for Priority hedgerows. All hedgerows mapped as linear features (km).	[16,448]	n/a	[2,712]	n/a	[2,712]	[0]
Traditional Orchards	Work to be undertaken to incorporate areas recently identified by PTES	0	0.00				
Open waters							
Ponds	No comprehensive information yet available. Only from field surveys	83	0.02	0.1	0.00	0	0
Rivers	Incomplete data. Figures for Chalk Rivers now digitised from latest OSMM polygons as Ha not from EA linear (km) as previously.	585	0.15	61	0.10	62	-1
Wetlands							
Coastal and Floodplain Grazing Marsh	Work ongoing to verify all qualifying grazing marsh. Some overlap with Lowland Meadows and with Purple Moor Grass and Rush Pastures.	7,776	2.00	710	1.12	796	-86
Lowland Fens	Comprehensive.	1,909	0.49	3	0.00	3	0
Reedbeds	Not complete as OSMM translation inaccurate in places.	251	0.06	2.0	0.00	2	0
Total		75,255	19.37	8,389	13.24	8,483	-94

Summary:

Despite on-going problems correcting the OSMM translation and issues with the habitat data capture tool most significant errors were corrected, but there still remain some especially with Wood-Pasture and Parkland and Lowland Mixed Deciduous Woodland.

Biosites 'Lower River Row and Lower Mill Fen' and 'Longbridge Mill Wood' woodland were re-classified as Wet Woodland

One hectare of river was lost due to correcting a field mapped as river.

Areas of Floodplain and Grazing Marsh were removed because they mostly lie outside of the flood zone modelled by EA and/or are now arable.

Notes:

1. Coastal and Marine categories are not displayed (as they are not relevant for this district).
2. The Hampshire and district totals of Priority habitat are the sum of the individual Priority habitat types (excluding Arable Field Margins). This is not the total area of land covered by Priority habitat within Hampshire and each district because some Priority habitat types overlap and hence are double counted (e.g. Coastal and Floodplain Grazing Marsh may overlap Lowland Meadows or Purple Moor Grass and Rush Pastures).
3. Because the total area of Priority habitat may include areas where habitats overlap the % of the district area covered by Priority habitat may be slightly over-exaggerated.
4. Minor changes in area might not always reflect real change but are results of a rounding of figures.

09.2 Nature Conservation Designations

Table 09B: Extent of Nature Conservation Designations (as at 31st March 2022)

Designation	Combined Hants sites (no)	Combined Hants area (ha)	Combined Hants area (%)	BDBC sites (no)	BDBC area (ha)	BDBC area (%)	2020/21 BDBC area (ha)	Change (ha)
LNR	70	2,420	1	8	267	0.42	267	0
NNR	10	2,116	1	1	23	0.04	23	0
RAMSAR	6	36,993	10	0	0	0.00	0	0
SAC	13	37,091	10	0	0	0.00	0	0
SPA	11	44,093	11	0	0	0.00	0	0
SSSI	131	50,559	13	20	806	1.27	806	0
Stat Sites Combined	241	53,436	14	29	883	1.39	883	0
SINC	4,119	35,723	9	822	6,279	9.91	6,264	15

Summary:

1. There were no changes to statutory sites during 2021/22.
2. For details of any new, amended and deleted SINCS see tables 09G, H & I.

Notes:

1. The areas total for 'Statutory sites combined' may not equal the total for each of the individual statutory site designations because there is often an overlap between statutory designations.

Table 09C: Statutory Designated Sites (as at 31st March 2022)

Designation	Site Name	Area (ha) within district
LNR	Beggarwood Park	21.93
LNR	Chineham Woods	9.17
LNR	Daneshill Park Woods	4.43
LNR	Herbert Plantation	25.60
LNR	Pamber Forest	190.13
LNR	Popley Ponds	1.44
LNR	The Mill Field	11.68
LNR	Up Nately	2.83
NNR	Ashford Hill	23.39
SSSI	Ashford Hill Woods and Meadows	141.55
SSSI	Bere Mill Meadows	10.27
SSSI	Burghclere Beacon	80.67
SSSI	Butter Wood	45.31
SSSI	Duncroft Farm Pit	0.12
SSSI	East Aston Common	0.53
SSSI	Greenham and Crookham Commons	0.46
SSSI	Greywell Tunnel (Basingstoke Canal)	0.11
SSSI	Highclere Park	69.58
SSSI	Hook Common and Bartley Heath	6.55
SSSI	Ladle Hill	10.50
SSSI	Mapledurwell Fen	0.42
SSSI	Micheldever Spoil Heaps	26.73
SSSI	Old Burghclere Lime Quarry	4.51
SSSI	Pamber Forest and Silchester Common	341.72
SSSI	River Test	41.86
SSSI	Ron Ward's Meadow with Tadley Pastures	11.51
SSSI	Sidley Wood	11.72
SSSI	Stanford End Mill and River Loddon	1.84
SSSI	West Woodhay Down	0.46

09.3 Priority Habitats within Designated Sites

Table 09D: Extent of Priority habitats within Designated Sites (as at 31st March 2022)

Designated Sites	Combined Hants area (ha)	Combined Hants area (%)	BDBC (ha)	BDBC area (%)	2020/21 BDBC area (ha)	Change area (ha)
Statutory sites combined	39,401	48.6	660	7.9	660	
SINC	22,187	27.4	4,272	50.9	4,266	6
Total combined	60,756	74.9	4,897	58.4	4,891	6

Summary:

1. Approx. 58% of Priority habitat in Basingstoke & Deane lies within designated sites.

Notes:

1. Total Priority habitat in Basingstoke & Deane as at 31st March 2022 = 8,389ha.

09.4 Condition of Sites of Special Scientific Interest (SSSIs)

Table 09E: Conditions of Sites of Special Scientific Interest (SSSIs) (as at 31st March 2022)

Condition	Combined Hants area (ha)	Combined Hants area (%)	BDBC area (ha)	BDBC area (%)	2020/21 BDBC area (ha)	Change in area (ha)
Favourable	23,773.52	47.0	485.42	60.2	499.88	-14.46
Unfavourable Recovering	21,263.37	42.1	239.36	29.7	241.27	-1.91
Unfavourable no Change	3,638.84	7.2	72.92	9.0	60.40	12.52
Unfavourable Declining	1,860.47	3.7	8.68	1.1	4.85	3.83
Part Destroyed	6.34	0.0	0.00	0.0	0.00	0.00
Destroyed	17.44	0.0	0.00	0.0	0.00	0.00
Grand Total	50,559.97	100.0	806.39	100.0	806.39	0.00

Notes:

1. Although data has been provided by Natural England the total amount of SSSI may differ from NE figures because NE do not always assign a portion of an SSSI to the correct District where the majority of that SSSI occurs within another District, whereas HBIC are able to clip the SSSI management units directly to the district boundaries.
2. Any change in area is due to NE re-digitising boundaries. The number of SSSIs remains the same.

09.5 SINC changes observed and recorded

Table 09F: Extent of changes to SINCS observed and recorded between 1st April 2021 and 31st March 2022

SINCS	Hants sites (no)	Hants sites (area)	BDBC sites (no)	BDBC sites (area)
Total sites (2020/21)	4,109	35,742.43	817	6,263.71
New Sites	11	28.39	5	14.67
Amended Sites	12	-46.51	1	0.62
Deleted sites	1	-0.92		0.00
Total sites (2021/22)	4,119	35,723.39	822	6,279.00
Net change	10	-19.04	5	15.29
% change in area		-10.27		0.24

Notes:

1. Data extracted from HBIC SINC layer and database between 1st April 2021 and 31st March 2022.
2. The totals in last year's report were not correct – see Section 1.2.6. This report now uses the correct figures.

Table 09G: New SINC approved between 1st April 2021 and 31st March 2022

Site Ref	Site Name	New Size (ha)	New Criteria	Panel date
BD0845	Popham Airfield Beech Break	1.05	1B	May 2021
BD0844	Cocksford Down	8.86	2A/2B	May 2021
BD0843	Pumping Station Meadow, Pamber	1.24	5B	May 2021
BD0841	Longbridge Mill Wood	2.69	1Cii	May 2021
BD0840	Wey Brook and Watercress Beds	0.83	5A/5B/6A	May 2021

Table 09H: Deleted SINC approved between 1st April 2021 and 31st March 2022

No SINC in Basingstoke and Deane Borough Council were deleted during 2021-2022.

Table 09I: Major amendments to SINC between 1st April 2021 and 31st March 2022

Site Ref	Site Name	Reason	Old Size (ha)	New Size (ha)	Old Criteria	New Criteria
BD0265	Overton Green Lanes	New Survey or Information	0.87	1.49		

10 Eastleigh Borough Council

10.1 Priority habitats

Table 10A: Extent of Priority habitats (as at 31st March 2022)

Priority Habitat	Comments on Status	Combined Hants area (ha)	% of Combined Hants area	EBC area (ha)	% of EBC area	2020/21 EBC area (ha)	Change in area (ha)
Grasslands							
Lowland Calcareous Grassland	Comprehensive	2,026	0.52				
Lowland Dry Acid Grassland	Comprehensive. Some overlap with Lowland Heath	3,710	0.96	0	0.00	0	0
Lowland Meadows	Comprehensive. Some overlap with Coastal and Floodplain Grazing Marsh and with Wood-Pasture and Parkland.	1,511	0.39	64	0.75	65	-1
Purple Moor Grass and Rush Pastures	Comprehensive. Some overlap with Coastal and Floodplain Grazing Marsh.	1,593	0.41	47	0.55	47	0
Heathlands							
Lowland Heathland	Comprehensive. Some overlap with Lowland Dry Acid Grassland.	12,157	3.13	6	0.07	6	0
Woodland, wood-pasture and parkland							
Lowland Beech and Yew Woodland	Not complete. On-going work to distinguish from Lowland Mixed Deciduous Woodland.	444	0.11	0.7	0.01	1	0
Lowland Mixed Deciduous Woodland	Ongoing work as all ancient/non ancient woodland has been included yet not all has been surveyed for qualifying NVC types. Also ongoing to remove small clumps.	35,485	9.13	509	5.97	514	-5
Wet Woodland	Fairly complete. Areas will exist in LMDW that are not yet surveyed for qualifying types.	2,205	0.57	166	1.95	161	5
Wood-Pasture and Parkland	Not complete. Further work needed to classify this habitat within historic parkland.	5,487	1.41	1	0.01	2	-1

Priority Habitat	Comments on Status	Combined Hants area (ha)	% of Combined Hants area	EBC area (ha)	% of EBC area	2020/21 EBC area (ha)	Change in area (ha)
Arable, orchards and hedgerows							
Arable Field Margins	Incomplete. Figures only show SINC's on arable land designated for rare arable plant assemblages.	[94]	[0.02]	[0.0]	[0.00]	[0]	[0]
Open Mosaic Habitats on Previously Developed Land	No comprehensive evaluation yet carried out. Two sites with HBIC field surveys.	33	0.01				
Hedgerows	No comprehensive information for Priority hedgerows. All hedgerows mapped as linear features (km).	[16,448]	n/a	[301]	n/a	[301]	[0]
Traditional Orchards	Work to be undertaken to incorporate areas recently identified by PTES	0	0.00	0.3	0.00	0	0
Open waters							
Ponds	No comprehensive information yet available.	83	0.02	0.1	0.00	0	0
Rivers	Incomplete data. Figures for Chalk Rivers now digitised from latest OSMM polygons as Ha not from EA linear (km) as previously.	585	0.15	26	0.30	27	-1
Wetlands							
Coastal and Floodplain Grazing Marsh	Work ongoing to verify all qualifying grazing marsh. Some overlap with Lowland Meadows and with Purple Moor Grass and Rush Pastures.	7,776	2.00	262	3.07	320	-58
Lowland Fens	Comprehensive.	1,909	0.49				
Reedbeds	Not complete as OSMM translation inaccurate in places.	251	0.06	9.2	0.11	10	0
Coastal							
Coastal Saltmarsh	Near comprehensive, ongoing checking with OSMM and APs	888	0.23	30	0.35	28	2
Coastal Sand Dunes	EA data partly verified.	47	0.01	0.1	0.00	0	0
Coastal Vegetated Shingle	Comprehensive.	215	0.06	3.4	0.04	3	0
Intertidal Mudflats	Near comprehensive, ongoing checking with OSMM and APs	4,234	1.09	164	1.92	166	-2
Maritime Cliff and Slopes	Comprehensive.	41	0.01				
Saline Lagoons	Comprehensive.	72	0.02				

Priority Habitat	Comments on Status	Combined Hants area (ha)	% of Combined Hants area	EBC area (ha)	% of EBC area	2020/21 EBC area (ha)	Change in area (ha)
Marine							
Seagrass Beds	Not comprehensive. HIOWWT data incorporated	348	0.09				
Total		81,100	20.88	1,289	15.11	1,350	-61

Summary:

Despite on-going problems correcting the OSM translation and issues with the habitat data capture tool most significant errors were corrected, but there still remain a few.

'Dummer's Copse and Bottom/Bushy Copse' Lowland Mixed Deciduous Woodland' were re-classified as Wet Woodland.

Some areas of Floodplain and Grazing Marsh were removed because they mostly lie outside of the flood zone modelled by EA and/or are now arable.

Notes:

1. The Hampshire and district totals of Priority habitat are the sum of the individual Priority habitat types (excluding Arable Field Margins). This is not the total area of land covered by Priority habitat within Hampshire and each district because some Priority habitat types overlap and hence are double counted (e.g. Coastal and Floodplain Grazing Marsh may overlap Lowland Meadows or Purple Moor Grass and Rush Pastures).
2. Because the total area of Priority habitat may include areas when habitats overlap the % of the district area covered by Priority habitat may be slightly over-exaggerated.
3. Minor changes in area might not always reflect real change but are results of a rounding of figures.

10.2 Nature Conservation Designations

Table 10B: Extent of Nature Conservation Designations (as at 31st March 2022)

Designation	Combined Hants sites (no)	Combined Hants area (ha)	Combined Hants area (%)	EBC sites (no)	EBC area (ha)	EBC area (%)	2020/21 EBC area (ha)	Change (ha)
LNR	70	2,420	1	7	242	2.84	242	0
NNR	10	2,116	1	0	0	0.00	0	0
RAMSAR	6	36,993	10	1	184	2.16	184	0
SAC	13	37,091	10	2	296	3.47	296	0
SPA	11	44,093	11	2	590	6.92	590	0
SSSI	131	50,559	13	5	427	5.01	427	0
Stat Sites Combined	241	53,436	14	17	1,001	11.74	1,001	0
SINC	4,119	35,723	9	149	823	9.65	823	0

Summary:

1. There were no changes to statutory sites during 2021/22.
2. For details of any new, amended and deleted SINCs see tables 10G, H & I.

Notes:

1. The areas total for 'Statutory sites combined' may not equal the total for each of the individual statutory site designations because there is often an overlap between statutory designations.

Table 10C: Statutory Designated Sites (as at 31st March 2022)

Designation	Site Name	Area (ha) within district
LNR	Hackett's Marsh	20.36
LNR	Hocombe Mead	8.30
LNR	Manor Farm	144.06
LNR	Mercury Marshes	6.36
LNR	Netley Common	7.51
LNR	Westwood Woodland Park	45.68
LNR	Wildern	9.66
Ramsar	Solent & Southampton Water	184.23
SAC	River Itchen	133.70
SAC	Solent Maritime	162.50
SPA	Solent & Southampton Water	184.23
SPA	Solent and Dorset Coast	405.48
SSSI	Lee-on-the Solent to Itchen Estuary	126.97
SSSI	Lincegrove and Hackett's Marshes	37.81
SSSI	Moorgreen Meadows	14.32
SSSI	River Itchen	157.95
SSSI	Upper Hamble Estuary and Woods	90.11

10.3 Priority Habitats within Designated Sites**Table 10D: Extent of Priority habitats within Designated Sites (as at 31st March 2022)**

Designated Sites	Combined Hants area (ha)	Combined Hants area (%)	EBC (ha)	EBC area (%)	2020/21 EBC area (ha)	Change area (ha)
Statutory sites combined	39,401	48.6	535	41.5	540	-5
SINC	22,187	27.4	537	41.6	535	2
Total combined	60,756	74.9	1,024	79.4	1,026	-2

Summary:

1. Approx. 79% of Priority habitat in Eastleigh lies within designated sites.

Notes:

1. Total Priority habitat in Eastleigh as at 31st March 2022 = 1,289ha.

10.4 Condition of Sites of Special Scientific Interest (SSSIs)

Table 10E: Conditions of Sites of Special Scientific Interest (SSSIs) (as at 31st March 2022)

Condition	Combined Hants area (ha)	Combined Hants area (%)	EBC area (ha)	EBC area (%)	2020/21 EBC area (ha)	Change in area (ha)
Favourable	23,773.52	47.0	191.43	44.8	197.32	-5.89
Unfavourable Recovering	21,263.37	42.1	144.73	33.9	144.87	-0.14
Unfavourable no Change	3,638.84	7.2	84.05	19.7	84.05	0.00
Unfavourable Declining	1,860.47	3.7	6.03	1.4	0.00	6.03
Part Destroyed	6.34	0.0	0.00	0.0	0.00	0.00
Destroyed	17.44	0.0	0.93	0.2	0.93	0.00
Grand Total	50,559.97	100.0	427.17	100.0	427.17	0.00

Notes:

1. Although data has been provided by Natural England the total amount of SSSI may differ from NE figures because NE do not always assign a portion of an SSSI to the correct District where the majority of that SSSI occurs within another District, whereas HBIC are able to clip the SSSI management units directly to the district boundaries.
2. Any change in area is due to NE re-digitising boundaries. The number of SSSIs remains the same.

10.5 SINC changes observed and recorded

Table 10F: Extent of changes to SINCS observed and recorded between 1st April 2021 and 31st March 2022

SINCS	Hants sites (no)	Hants sites (area)	EBC sites (no)	EBC sites (area)
Total sites (2020/21)	4,109	35,742.43	149	822.84
New Sites	11	28.39		
Amended Sites	12	-46.51	1	0.21
Deleted sites	1	-0.92		
Total sites (2021/22)	4,119	35,723.39	149	823.05
Net change	10	-19.04		0.21
% change in area		-10.27		0.03

Notes:

1. Data extracted from HBIC SINC layer and database between 1st April 2021 and 31st March 2022.
2. The totals in the previous report were not correct – see Section 1.2.6. This report now uses the correct figures.

Table 10G: New SINC approved between 1st April 2021 and 31st March 2022

No new SINC in Eastleigh Borough Council were approved during 2021-2022.

Table 10H: Deleted SINC approved between 1st April 2021 and 31st March 2022

No SINC in Eastleigh Borough Council were deleted during 2021-2022.

Table 10I: Major amendments to SINC between 1st April 2021 and 31st March 2022

Site Ref	Site Name	Reason	Old Size (ha)	New Size (ha)	Old Criteria	New Criteria
EA0028	Swamp West of Recreation Grounds	Data Correction/Reinterpretation	3.09	3.3	5B	5A/5B/6A

12 Fareham Borough Council

12.1 Priority habitats

Table 12A: Extent of Priority habitats (as at 31st March 2022)

Priority Habitat	Comments on Status	Combined Hants area (ha)	% of Combined Hants area	FBC area (ha)	% of FBC area	2020/21 FBC area (ha)	Change in area (ha)
Grasslands							
Lowland Calcareous Grassland	Comprehensive	2,026	0.52	16	0.21	17	-1
Lowland Dry Acid Grassland	Comprehensive. Some overlap with Lowland Heath	3,710	0.96	6	0.08	6	0
Lowland Meadows	Comprehensive. Some overlap with Coastal and Floodplain Grazing Marsh and with Wood-Pasture and Parkland.	1,511	0.39	19	0.24	23	-4
Purple Moor Grass and Rush Pastures	Comprehensive. Some overlap with Coastal and Floodplain Grazing Marsh.	1,593	0.41	5	0.06	5	0
Heathlands							
Lowland Heathland	Comprehensive. Some overlap with Lowland Dry Acid Grassland.	12,157	3.13	2	0.03	2	0
Woodland, wood-pasture and parkland							
Lowland Beech and Yew Woodland	Not complete. On-going work to distinguish from Lowland Mixed Deciduous Woodland.	444	0.11				
Lowland Mixed Deciduous Woodland	Ongoing work as all ancient/non ancient woodland has been included yet not all has been surveyed for qualifying NVC types. Also ongoing to remove small clumps.	35,485	9.13	459	5.90	460	-1
Wet Woodland	Fairly complete. Areas will exist in LMDW that are not yet surveyed for qualifying types.	2,205	0.57	53	0.68	54	-1
Wood-Pasture and Parkland	Not complete. Further work needed to classify this habitat within historic parkland.	5,487	1.41	22	0.28	22	0

Priority Habitat	Comments on Status	Combined Hants area (ha)	% of Combined Hants area	FBC area (ha)	% of FBC area	2020/21 FBC area (ha)	Change in area (ha)
Arable, orchards and hedgerows							
Arable Field Margins	Incomplete. Figures only show SINC's on arable land designated for rare arable plant assemblages.	[94]	[0.02]	[0.0]	[0.00]	[0]	[0]
Open Mosaic Habitats on Previously Developed Land	No comprehensive evaluation yet carried out. Two sites with HBIC field surveys.	33	0.01				
Hedgerows	No comprehensive information for Priority hedgerows. All hedgerows mapped as linear features (km).	[16,448]	n/a	[265]	n/a	[265]	[0]
Traditional Orchards	Work to be undertaken to incorporate areas identified by PTES	0	0.00				
Open waters							
Ponds	No comprehensive information yet available. Only from field surveys	83	0.02	1.1	0.01	1	0
Rivers	Incomplete data. Figures for Chalk Rivers now digitised from latest OSMM polygons as Ha not from EA linear (km) as previously.	585	0.15	9	0.12	9	0
Wetlands							
Coastal and Floodplain Grazing Marsh	Work ongoing to verify all qualifying grazing marsh. Some overlap with Lowland Meadows and with Purple Moor Grass and Rush Pastures.	7,776	2.00	306	3.93	337	-31
Lowland Fens	Comprehensive.	1,909	0.49				
Reedbeds	Not complete as OSMM translation inaccurate in places.	251	0.06	46.4	0.60	48	-2
Coastal							
Coastal Saltmarsh	Near comprehensive, ongoing checking with OSMM and APs.	888	0.23	29	0.37	29	0
Coastal Sand Dunes	Comprehensive.	47	0.01				
Coastal Vegetated Shingle	Comprehensive.	215	0.06	12.0	0.15	12	0
Intertidal Mudflats	Near comprehensive, ongoing checking with OSMM and APs.	4,234	1.09	277	3.56	298	-21
Maritime Cliff and Slopes	Comprehensive.	41	0.01	1.4	0.02	1	0
Saline Lagoons	Comprehensive.	72	0.02	3.1	0.04	1	2

Priority Habitat	Comments on Status	Combined Hants area (ha)	% of Combined Hants area	FBC area (ha)	% of FBC area	2020/21 FBC area (ha)	Change in area (ha)
Marine							
Seagrass Beds	Comprehensive. HIOWWT data incorporated	348	0.09	20.7	0.27		21
Total		81,100	20.88	1,288	16.55	1,326	-38

Summary:

Despite on-going problems correcting the OSM translation and issues with the habitat data capture tool most significant errors were corrected, but there still remain a few.

Some areas of Floodplain and Grazing Marsh were removed because they mostly lie outside of the flood zone modelled by EA and/or are now arable.

The integration of a layer of Seagrass beds from the HIOWWT has increased the area of Seagrass Beds and decreased the area of Intertidal Mudflats.

Notes:

1. The Hampshire and district totals of Priority habitat are the sum of the individual Priority habitat types (excluding Arable Field Margins). This is not the total area of land covered by Priority habitat within Hampshire and each district because some Priority habitat types overlap and hence are double counted (e.g. Coastal and Floodplain Grazing Marsh may overlap Lowland Meadows or Purple Moor Grass and Rush Pastures).
2. Because the total area of Priority habitat may include areas when habitats overlap the % of the district area covered by Priority habitat may be slightly over-exaggerated.
3. Minor changes in area might not always reflect real change but are results of a rounding of figures.

12.2 Nature Conservation Designations

Table 12B: Extent of Nature Conservation Designations (as at 31st March 2022)

Designation	Combined Hants sites (no)	Combined Hants area (ha)	Combined Hants area (%)	FBC sites (no)	FBC area (ha)	FBC area (%)	2020/21 FBC area (ha)	Change (ha)
LNR	70	2,420	1	6	418	5.38	418	0
NNR	10	2,116	1	1	120	1.54	120	0
RAMSAR	6	36,993	10	2	540	6.95	540	0
SAC	13	37,091	10	1	195	2.51	195	0
SPA	11	44,093	11	3	595	7.65	595	0
SSSI	131	50,559	13	6	563	7.24	563	0
Stat Sites Combined	241	53,436	14	19	770	9.90	771	0
SINC	4,119	35,723	9	111	610	7.84	609	1

Summary:

1. There were no changes to statutory sites during 2021/22.
2. For details of any new, amended and deleted SINCS see tables 12G, H & I.

Notes:

1. The areas total for 'Statutory sites combined' may not equal the total for each of the individual statutory site designations because there is often an overlap between statutory designations.
2. The SPAs 'Solent and Dorset Coast' and 'Portsmouth Harbour' overlap in FBC. Last year's report counted these overlaps twice. This report counts them now only once.

Table 12C: Statutory Designated Sites (as at 31st March 2022)

Designation	Site Name	Area (ha) within district
LNR	Gull Coppice	5.62
LNR	Holly Hill Woodland Park	28.13
LNR	Hook with Warsash	251.37
LNR	Kites Croft	17.04
LNR	Titchfield Haven	92.95
LNR	Warsash Common	23.38
NNR	Titchfield Haven	119.62
Ramsar	Portsmouth Harbour	36.04
Ramsar	Solent & Southampton Water	504.42
SAC	Solent Maritime	195.48
SPA	Portsmouth Harbour	36.04
SPA	Solent & Southampton Water	490.89
SPA	Solent and Dorset Coast	101.72
SSSI	Downend Chalk Pit	4.36
SSSI	Lee-on-the Solent to Itchen Estuary	344.85
SSSI	Portsdown	6.31
SSSI	Portsmouth Harbour	36.04
SSSI	Titchfield Haven	134.49
SSSI	Upper Hamble Estuary and Woods	37.10

12.3 Priority Habitats within Designated Sites**Table 12D: Extent of Priority habitats within Designated Sites (as at 31st March 2022)**

Designated Sites	Combined Hants area (ha)	Combined Hants area (%)	FBC (ha)	FBC area (%)	2020/21 FBC area (ha)	Change area (ha)
Statutory sites combined	39,401	48.6	633	49.1	641	-8
SINC	22,187	27.4	412	32.0	414	-2
Total combined	60,756	74.9	950	73.7	959	-9

Summary:

1. Approx. 74% of Priority habitat in Fareham lies within designated sites.

Notes:

1. Total Priority habitat in Fareham as at 31st March 2022 = 1,288ha.

12.4 Condition of Sites of Special Scientific Interest (SSSIs)

Table 12E: Conditions of Sites of Special Scientific Interest (SSSIs) (as at 31st March 2022)

Condition	Combined Hants area (ha)	Combined Hants area (%)	FBC area (ha)	FBC area (%)	2020/21 FBC area (ha)	Change in area (ha)
Favourable	23,773.52	47.0	258.80	46.0	241.96	16.84
Unfavourable Recovering	21,263.37	42.1	134.12	23.8	150.95	-16.83
Unfavourable no Change	3,638.84	7.2	165.50	29.4	165.50	0.00
Unfavourable Declining	1,860.47	3.7	4.73	0.8	4.73	0.00
Part Destroyed	6.34	0.0	0.00	0.0	0.00	0.00
Destroyed	17.44	0.0	0.00	0.0	0.00	0.00
Grand Total	50,559.97	100.0	563.15	100.0	563.15	0.00

Notes:

1. Although data has been provided by Natural England the total amount of SSSI may differ from NE figures because NE do not always assign a portion of an SSSI to the correct District where the majority of that SSSI occurs within another District, whereas HBIC are able to clip the SSSI management units directly to the district boundaries.
2. Any change in area is due to NE re-digitising boundaries. The number of SSSIs remains the same.

12.5 SINC changes observed and recorded

Table 12F: Extent of changes to SINCS observed and recorded between 1st April 2021 and 31st March 2022

SINCS	Hants sites (no)	Hants sites (area)	FBC sites (no)	FBC sites (area)
Total sites (2020/21)	4,109	35,742.43	110	608.81
New Sites	11	28.39	1	1.37
Amended Sites	12	-46.51	1	0.00
Deleted sites	1	-0.92		
Total sites (2021/22)	4,119	35,723.39	111	610.18
Net change	10	-19.04	1	1.37
% change in area		-10.27		0.22

Notes:

1. Data extracted from HBIC SINC layer and database between 1st April 2021 and 31st March 2022.
2. The totals in the previous report were not correct – see Section 1.2.6. This report now uses the correct figures.

Table 12G: New SINC approved between 1st April 2021 and 31st March 2022

Site Ref	Site Name	New Size (ha)	New Criteria	Panel date
FA0113	Meadows North of Woodcote Lane, Peel Common	1.37	6A	May 2020

Note: Actually approved during 2020-21 as an 'ad hoc' site but missed out of the 2020/21 report by error

Table 12H: Deleted SINC approved between 1st April 2021 and 31st March 2022

No SINC in Fareham Borough Council were deleted during 2021-2022.

Table 12I: Major amendments to SINC between 1st April 2021 and 31st March 2022

Site Ref	Site Name	Reason	Old Size (ha)	New Size (ha)	Old Criteria	New Criteria
FA0074	The Gillies Woodland	Lack of management			1Cii/5B/7A	1Cii/7A

13 Gosport Borough Council

13.1 Priority habitats

Table 13A: Extent of Priority habitats (as at 31st March 2022)

Priority Habitat	Comments on Status	Combined Hants area (ha)	% of Combined Hants area	GBC area (ha)	% of GBC area	2020/21 GBC area (ha)	Change in area (ha)
Grasslands							
Lowland Calcareous Grassland	Comprehensive	2,026	0.52				
Lowland Dry Acid Grassland	Comprehensive. Some overlap with Lowland Heath	3,710	0.96	10	0.36	10	0
Lowland Meadows	Comprehensive. Some overlap with Coastal and Floodplain Grazing Marsh and with Wood-Pasture and Parkland.	1,511	0.39	33	1.20	21	12
Purple Moor Grass and Rush Pastures	Comprehensive. Some overlap with Coastal and Floodplain Grazing Marsh.	1,593	0.41	1	0.04	1	0
Heathlands							
Lowland Heathland	Comprehensive. Some overlap with Lowland Dry Acid Grassland.	12,157	3.13	4	0.15	4	0
Woodland, wood-pasture and parkland							
Lowland Beech and Yew Woodland	Not complete. On-going work to distinguish from Lowland Mixed Deciduous Woodland.	444	0.11				
Lowland Mixed Deciduous Woodland	Ongoing work as all ancient/non ancient woodland has been included yet not all has been surveyed for qualifying NVC types. Also ongoing to remove small clumps.	35,485	9.13	71	2.58	72	-1
Wet Woodland	Fairly complete. Areas will exist in LMDW that are not yet surveyed for qualifying types.	2,205	0.57	22	0.80	22	0
Wood-Pasture and Parkland	Not complete. Further work needed to classify this habitat within historic parkland.	5,487	1.41	15	0.55	15	0

Priority Habitat	Comments on Status	Combined Hants area (ha)	% of Combined Hants area	GBC area (ha)	% of GBC area	2020/21 GBC area (ha)	Change in area (ha)
Arable, orchards and hedgerows							
Arable Field Margins	Incomplete. Figures only show SINC's on arable land designated for rare arable plant assemblages.	[94]	[0.02]	[0.0]	[0.00]	[0]	[0]
Open Mosaic Habitats on Previously Developed Land	No comprehensive evaluation yet carried out. Two sites with HBIC field surveys.	33	0.01				
Hedgerows	No comprehensive information for Priority hedgerows. All hedgerows mapped as linear features (km).	[16,448]	n/a	[25]	n/a	[25]	[0]
Traditional Orchards	Work to be undertaken to incorporate areas recently identified by PTES.	0	0.00				
Open waters							
Ponds	No comprehensive information yet available. Only from field surveys	83	0.02	2.0	0.07	2	0
Rivers	Incomplete data. Figures for Chalk Rivers now digitised from latest OSMM polygons as Ha not from EA linear (km) as previously.	585	0.15				
Wetlands							
Coastal and Floodplain Grazing Marsh	Work ongoing to verify all qualifying grazing marsh. Some overlap with Lowland Meadows and with Purple Moor Grass and Rush Pastures.	7,776	2.00	69	2.51	58	11
Lowland Fens	Comprehensive.	1,909	0.49	0	0.00	0	0
Reedbeds	Not complete as OSMM translation inaccurate in places.	251	0.06	13.9	0.51	14	0
Coastal							
Coastal Saltmarsh	Near comprehensive, ongoing checking with OSMM and APs.	888	0.23	29	1.05	29	0
Coastal Sand Dunes	Comprehensive.	47	0.01	0.4	0.01	0	0
Coastal Vegetated Shingle	Comprehensive.	215	0.06	62.5	2.27	63	0
Intertidal Mudflats	Near comprehensive, ongoing checking with OSMM and APs.	4,234	1.09	107	3.89	108	-1
Maritime Cliff and Slopes	Comprehensive.	41	0.01				
Saline Lagoons	Comprehensive.	72	0.02	11.0	0.40	10	1

Priority Habitat	Comments on Status	Combined Hants area (ha)	% of Combined Hants area	GBC area (ha)	% of GBC area	2020/21 GBC area (ha)	Change in area (ha)
Marine							
Seagrass Beds	Comprehensive. HIOWWT data incorporated.	348	0.09	0.4	0.01		0
Total		81,100	20.88	451	16.41	429	22

Summary:

Despite on-going problems correcting the OSMM translation and issues with the habitat data capture tool most significant errors were corrected, but there still remain a few.

Coastal Floodplain and Grazing Marsh was reviewed where areas lie predominantly outside the flood zone modelled by EA. Parts were lost to the Kingfisher Caravan Park. Gains were made following recent surveys.

There were gains of Lowland Meadows because of recent surveys of 'Bedenham' and 'HMS Sultan'.

Notes:

1. The Hampshire and district totals of Priority habitat are the sum of the individual Priority habitat types (excluding Arable Field Margins). This is not the total area of land covered by Priority habitat within Hampshire and each district because some Priority habitat types overlap and hence are double counted (e.g. Coastal and Floodplain Grazing Marsh may overlap Lowland Meadows or Purple Moor Grass and Rush Pastures).
2. Because the total area of Priority habitat may include areas when habitats overlap the % of the district area covered by Priority habitat may be slightly over-exaggerated.
3. Minor changes in area might not always reflect real change but are results of a rounding of figures.

13.2 Nature Conservation Designations

Table 13B: Extent of Nature Conservation Designations (as at 31st March 2022)

Designation	Combined Hants sites (no)	Combined Hants area (ha)	Combined Hants area (%)	GBC sites (no)	GBC area (ha)	GBC area (%)	2020/21 GBC area (ha)	Change (ha)
LNR	70	2,420	1	2	40	1.45	40	0
NNR	10	2,116	1	0	0	0.00	0	0
RAMSAR	6	36,993	10	2	165	5.99	165	0
SAC	13	37,091	10	1	4	0.15	4	0
SPA	11	44,093	11	3	230	8.35	230	0
SSSI	131	50,559	13	5	265	9.64	265	0
Stat Sites Combined	241	53,436	14	13	335	12.19	335	0
SINC	4,119	35,723	9	39	358	13.01	374	-16

Summary:

1. There were no changes to statutory sites during 2021/22.
2. For details of any new, amended and deleted SINC's see tables 13G, H & I.

Notes:

1. The areas total for 'Statutory sites combined' may not equal the total for each of the individual statutory site designations because there is often an overlap between statutory designations.

Table 13C: Statutory Designated Sites (as at 31st March 2022)

Designation	Site Name	Area (ha) within district
LNR	The Wild Grounds	28.41
LNR	West of the River Alver	11.55
Ramsar	Portsmouth Harbour	160.68
Ramsar	Solent & Southampton Water	4.06
SAC	Solent & Isle of Wight Lagoons	4.06
SPA	Portsmouth Harbour	160.68
SPA	Solent and Dorset Coast	217.41
SSSI	Browdown	65.76
SSSI	Gilkicker Lagoon	4.06
SSSI	Lee-on-the Solent to Itchen Estuary	2.10
SSSI	Portsmouth Harbour	165.14
SSSI	The Wild Grounds	28.16

13.3 Priority Habitats within Designated Sites**Table 13D: Extent of Priority habitats within Designated Sites (as at 31st March 2022)**

Designated Sites	Combined Hants area (ha)	Combined Hants area (%)	GBC (ha)	GBC area (%)	2020/21 GBC area (ha)	Change area (ha)
Statutory sites combined	39,401	48.6	228	50.4	228	
SINC	22,187	27.4	179	39.6	152	27
Total combined	60,756	74.9	397	87.9	371	26

Summary:

1. Approx. 88% of Priority habitat in Gosport District lies within designated sites.

Notes:

1. Total Priority habitat in Gosport District as at 31st March 2022 = 451ha.

13.4 Condition of Sites of Special Scientific Interest (SSSIs)

Table 13E: Conditions of Sites of Special Scientific Interest (SSSIs) (as at 31st March 2022)

Condition	Combined Hants area (ha)	Combined Hants area (%)	GBC area (ha)	GBC area (%)	2020/21 GBC area (ha)	Change in area (ha)
Favourable	23,773.52	47.0	56.59	21.3	56.59	0.00
Unfavourable Recovering	21,263.37	42.1	83.95	31.7	82.00	1.95
Unfavourable no Change	3,638.84	7.2	120.23	45.3	120.23	0.00
Unfavourable Declining	1,860.47	3.7	0.00	0.0	1.95	-1.95
Part Destroyed	6.34	0.0	0.00	0.0	0.00	0.00
Destroyed	17.44	0.0	4.46	1.7	4.46	0.00
Grand Total	50,559.97	100.0	265.23	100.0	265.23	0.00

Notes:

1. Although data has been provided by Natural England the total amount of SSSI may differ from NE figures because NE do not always assign a portion of an SSSI to the correct District where the majority of that SSSI occurs within another District, whereas HBIC are able to clip the SSSI management units directly to the district boundaries.
2. Any change in area is due to NE re-digitising boundaries. The number of SSSIs remains the same.

13.5 SINC changes observed and recorded

Table 13F: Extent of changes to SINCS observed and recorded between 1st April 2021 and 31st March 2022

SINCS	Hants sites (no)	Hants sites (area)	GBC sites (no)	GBC sites (area)
Total sites (2020/21)	4,109	35,742.43	39	373.50
New Sites	11	28.39		
Amended Sites	12	-46.51	3	-15.75
Deleted sites	1	-0.92		
Total sites (2021/22)	4,119	35,723.39	39	357.75
Net change	10	-19.04		-15.75
% change in area		-10.27		-4.41

Notes:

1. Data extracted from HBIC SINC layer and database between 1st April 2021 and 31st March 2022.
2. The totals in the previous report were not correct – see Section 1.2.6. This report now uses the correct figures.

Table 13G: New SINC approved between 1st April 2021 and 31st March 2022

No new SINC in Gosport Borough Council were approved during 2021-2022.

Table 13H: Deleted SINC approved between 1st April 2021 and 31st March 2022

No SINC in Gosport Borough Council were deleted during 2021-2022.

Table 13I: Major amendments to SINC between 1st April 2021 and 31st March 2022

Site Ref	Site Name	Reason	Old Size (ha)	New Size (ha)	Old Criteria	New Criteria
GO0030	DM Gosport South	Lack of management	12.78	11.4		
GO0013	DM Gosport	New Survey or Information			1B/2B/6A	1B/1Cii/2B/6A
GO0012	Bedenham	Data Correction/Reinterpretation	99.45	85.08	2B/2D/4A/5B/6A	2B/4A/5A/6A

14 Hart District Council

14.1 Priority habitats

Table 14A: Extent of Priority habitats (as at 31st March 2022)

Priority Habitat	Comments on Status	Combined Hants area (ha)	% of Combined Hants area	HDC area (ha)	% of HDC area	2020/21 HDC area (ha)	Change in area (ha)
Grasslands							
Lowland Calcareous Grassland	Comprehensive	2,026	0.52	2	0.01	2	0
Lowland Dry Acid Grassland	Comprehensive. Some overlap with Lowland Heath	3,710	0.96	195	0.91	192	3
Lowland Meadows	Comprehensive. Some overlap with Coastal and Floodplain Grazing Marsh and with Wood-Pasture and Parkland.	1,511	0.39	108	0.50	107	1
Purple Moor Grass and Rush Pastures	Comprehensive. Some overlap with Coastal and Floodplain Grazing Marsh.	1,593	0.41	152	0.71	136	16
Heathlands							
Lowland Heathland	Comprehensive. Some overlap with Lowland Dry Acid Grassland.	12,157	3.13	311	1.44	268	43
Woodland, wood-pasture and parkland							
Lowland Beech and Yew Woodland	Not complete. On-going work to distinguish from Lowland Mixed Deciduous Woodland.	444	0.11	0.4	0.00	0	0
Lowland Mixed Deciduous Woodland	Ongoing work as all ancient/non ancient woodland has been included yet not all has been surveyed for qualifying NVC types. Also ongoing to remove small clumps.	35,485	9.13	2,520	11.71	2,541	-21
Wet Woodland	Fairly complete. Areas will exist in LMDW that are not yet surveyed for qualifying types.	2,205	0.57	146	0.68	144	2
Wood-Pasture and Parkland	Not comprehensive. Further work needed to classify this habitat within historic parkland.	5,487	1.41	203	0.94	226	-23

Priority Habitat	Comments on Status	Combined Hants area (ha)	% of Combined Hants area	HDC area (ha)	% of HDC area	2020/21 HDC area (ha)	Change in area (ha)
Arable, orchards and hedgerows							
Arable Field Margins	Incomplete. Figures only show SINC's on arable land designated for rare arable plant assemblages.	[94]	[0.02]	[5.0]	[0.02]	[5]	[0]
Open Mosaic Habitats on Previously Developed Land	No comprehensive evaluation yet carried out. Two sites with HBIC field surveys.	33	0.01				
Hedgerows	No comprehensive information for Priority hedgerows. All hedgerows mapped as linear features (km).	[16,448]	n/a	[919]	n/a	[919]	[0]
Traditional Orchards	Work to be undertaken to incorporate areas recently identified by PTES.	0	0.00				
Open waters							
Ponds	No comprehensive information yet available. Only from field surveys	83	0.02				
Rivers	Incomplete data. Figures for Chalk Rivers now digitised from latest OSMM polygons as Ha not from EA linear (km) as previously.	585	0.15	46	0.21	46	0
Wetlands							
Coastal and Floodplain Grazing Marsh	Work ongoing to verify all qualifying grazing marsh. Some overlap with Lowland Meadows and with Purple Moor Grass and Rush Pastures.	7,776	2.00	510	2.37	805	-295
Lowland Fens	Comprehensive.	1,909	0.49	11	0.05	11	0
Reedbeds	Not complete as OSMM translation inaccurate in places.	251	0.06	1.1	0.01	1	0
Total		75,255	19.37	4,206	19.54	4,479	-273

Summary:

Despite on-going problems correcting the OSMM translation and issues with the habitat data capture tool most significant errors were corrected, but there still remain a few.

Floodplain and Grazing Marsh was reviewed where areas lie predominantly outside the flood zone modelled by EA and/or were now arable.

There were gains of Lowland Heathland mainly filling in gaps at Bourley and Long Valley SSSI using SSSI Condition Assessment data following clearance of plantation.

Notes:

1. Coastal and Marine categories are not displayed (as they are not relevant for this district).
2. The Hampshire and district totals of Priority habitat are the sum of the individual Priority habitat types (excluding Arable Field Margins). This is not the total area of land covered by Priority habitat within Hampshire and each district because some Priority habitat types overlap and hence are double counted (e.g. Coastal and Floodplain Grazing Marsh may overlap Lowland Meadows or Purple Moor Grass and Rush Pastures).
3. Because the total area of Priority habitat may include areas where habitats overlap the % of the district area covered by Priority habitat may be slightly over-exaggerated.
4. Minor changes in area might not always reflect real change but are results of a rounding of figures.

14.2 Nature Conservation Designations**Table 14B: Extent of Nature Conservation Designations (as at 31st March 2022)**

Designation	Combined Hants sites (no)	Combined Hants area (ha)	Combined Hants area (%)	HDC sites (no)	HDC area (ha)	HDC area (%)	2020/21 HDC area (ha)	Change (ha)
LNR	70	2,420	1	3	76	0.35	76	0
NNR	10	2,116	1	1	31	0.14	31	0
RAMSAR	6	36,993	10	0	0	0.00	0	0
SAC	13	37,091	10	0	0	0.00	0	0
SPA	11	44,093	11	1	2,099	9.75	2,099	0
SSSI	131	50,559	13	16	2,696	12.52	2,696	0
Stat Sites Combined	241	53,436	14	21	2,724	12.65	2,724	0
SINC	4,119	35,723	9	283	2,025	9.41	2,025	0

Summary:

1. There were no changes to statutory sites during 2021/22.
2. For details of any new, amended and deleted SINC's see tables 14G, H & I.

Notes:

1. The areas total for 'Statutory sites combined' may not equal the total for each of the individual statutory site designations because there is often an overlap between statutory designations.

Table 14C: Statutory Designated Sites (as at 31st March 2022)

Designation	Site Name	Area (ha) within district
LNR	Elvetham Heath	19.96
LNR	Fleet Pond	48.32
LNR	Zebon Copse	7.82
NNR	Castle Bottom	30.82
SPA	Thames Basin Heaths	2,098.56
SSSI	Basingstoke Canal	38.86
SSSI	Blackwater Valley	14.61
SSSI	Bourley and Long Valley	381.10
SSSI	Bramshill	673.27
SSSI	Butter Wood	87.67
SSSI	Castle Bottom to Yateley and Hawley Commons	897.86
SSSI	Fleet Pond	48.34
SSSI	Foxlease and Ancells Meadows	67.39
SSSI	Greywell Fen	38.04
SSSI	Greywell Tunnel (Basingstoke Canal)	0.29
SSSI	Hazeley Heath	180.79
SSSI	Heath Brow	1.89
SSSI	Hook Common and Bartley Heath	122.85
SSSI	Odiham Common with Bagwell Green and Shaw	133.77
SSSI	Warnborough Green	4.38
SSSI	West Minley Meadow	4.45

14.3 Priority Habitats within Designated Sites

Table 14D: Extent of Priority habitats within Designated Sites (as at 31st March 2022)

Designated Sites	Combined Hants area (ha)	Combined Hants area (%)	HDC (ha)	HDC area (%)	2020/21 HDC area (ha)	Change area (ha)
Statutory sites combined	39,401	48.6	1,210	28.8	1,197	13
SINC	22,187	27.4	1,381	32.8	1,375	6
Total combined	60,756	74.9	2,570	61.1	2,551	19

Summary:

1. Approx. 61% of Priority habitat in Hart lies within designated sites.

Notes:

1. Total Priority habitat in Hart as at 31st March 2022 = 4,206ha.

14.4 Condition of Sites of Special Scientific Interest (SSSIs)

Table 14E: Conditions of Sites of Special Scientific Interest (SSSIs) (as at 31st March 2022)

Condition	Combined Hants area (ha)	Combined Hants area (%)	HDC area (ha)	HDC area (%)	2020/21 HDC area (ha)	Change in area (ha)
Favourable	23,773.52	47.0	1,594.96	59.2	494.19	1,100.77
Unfavourable Recovering	21,263.37	42.1	1,013.70	37.6	2,084.62	-1,070.92
Unfavourable no Change	3,638.84	7.2	35.75	1.3	9.69	26.06
Unfavourable Declining	1,860.47	3.7	44.81	1.7	100.73	-55.92
Part Destroyed	6.34	0.0	6.34	0.2	6.34	0.00
Destroyed	17.44	0.0	0.00	0.0	0.00	0.00
Grand Total	50,559.97	100.0	2,695.57	100.0	2,695.57	0.00

Notes:

1. Although data has been provided by Natural England the total amount of SSSI may differ from NE figures because NE do not always assign a portion of an SSSI to the correct District where the majority of that SSSI occurs within another District, whereas HBIC are able to clip the SSSI management units directly to the district boundaries.
2. Any change in area is due to NE re-digitising boundaries. The number of SSSIs remains the same.

14.5 SINC changes observed and recorded

Table 14F: Extent of changes to SINCS observed and recorded between 1st April 2021 and 31st March 2022

SINCS	Hants sites (no)	Hants sites (area)	HDC sites (no)	HDC sites (area)
Total sites (2020/21)	4,109	35,742.43	282	2,024.59
New Sites	11	28.39	1	0.17
Amended Sites	12	-46.51		
Deleted sites	1	-0.92		
Total sites (2021/22)	4,119	35,723.39	283	2,024.76
Net change	10	-19.04	1	0.17
% change in area		-10.27		0.01

Notes:

1. Data extracted from HBIC SINC layer and database between 1st April 2021 and 31st March 2022.
2. The totals in the previous report were not correct. See Section 1.2.6. This report now uses now correct figures.

Table 14G: New SINC approved between 1st April 2021 and 31st March 2022

Site Ref	Site Name	New Size (ha)	New Criteria	Panel date
HA0295	B3011 Reading Road, Grouse Green	0.17	6A	May 2021

Table 14H: Deleted SINC approved between 1st April 2021 and 31st March 2022

No SINC in Hart District Council were deleted during 2021-2022.

Table 14I: Major amendments to SINC between 1st April 2021 and 31st March 2022

No major amendments were made to SINC in Hart District Council during 2021-2022.

15 Havant Borough Council

15.1 Priority habitats

Table 15A: Extent of Priority habitats (as at 31st March 2022)

Priority Habitat	Comments on Status	Combined Hants area (ha)	% of Combined Hants area	HVBC area (ha)	% of HVBC area	2020/21 HVBC area (ha)	Change in area (ha)
Grasslands							
Lowland Calcareous Grassland	Comprehensive	2,026	0.52	4	0.05	4	0
Lowland Dry Acid Grassland	Comprehensive. Some overlap with Lowland Heath	3,710	0.96	21	0.27	21	0
Lowland Meadows	Comprehensive. Some overlap with Coastal and Floodplain Grazing Marsh and with Wood-Pasture and Parkland.	1,511	0.39	34	0.43	34	0
Purple Moor Grass and Rush Pastures	Comprehensive. Some overlap with Coastal and Floodplain Grazing Marsh.	1,593	0.41	9	0.11	9	0
Heathlands							
Lowland Heathland	Comprehensive. Some overlap with Lowland Dry Acid Grassland.	12,157	3.13	1	0.01	1	0
Woodland, wood-pasture and parkland							
Lowland Beech and Yew Woodland	Not complete. On-going work to distinguish from Lowland Mixed Deciduous Woodland.	444	0.11				
Lowland Mixed Deciduous Woodland	Ongoing work as all ancient/non ancient woodland has been included yet not all has been surveyed for qualifying NVC types. Also ongoing to remove small clumps.	35,485	9.13	190	2.40	190	0
Wet Woodland	Fairly complete. Areas will exist in LMDW that are not yet surveyed for qualifying types.	2,205	0.57	38	0.48	37	1
Wood-Pasture and Parkland	Not comprehensive. Further work needed to classify this habitat within historic parkland.	5,487	1.41	4	0.05	4	0

Priority Habitat	Comments on Status	Combined Hants area (ha)	% of Combined Hants area	HVBC area (ha)	% of HVBC area	2020/21 HVBC area (ha)	Change in area (ha)
Arable, orchards and hedgerows							
Arable Field Margins	Incomplete. Figures only show SINC's on arable land designated for rare arable plant assemblages.	[94]	[0.02]	[22.5]	[0.28]	[23]	[0]
Open Mosaic Habitats on Previously Developed Land	No comprehensive evaluation yet carried out. Two sites with HBIC field surveys.	33	0.01				
Hedgerows	No comprehensive information for Priority hedgerows. All hedgerows mapped as linear features (km).	[16,448]	n/a	[200]	n/a	[200]	[0]
Traditional Orchards	Work to be undertaken to incorporate areas recently identified by PTES.	0	0.00				
Open waters							
Ponds	No comprehensive information yet available. Only from field surveys	83	0.02				
Rivers	Incomplete data. Figures for Chalk Rivers now digitised from latest OSMM polygons as Ha not from EA linear (km) as previously.	585	0.15				
Wetlands							
Coastal and Floodplain Grazing Marsh	Work ongoing to verify all qualifying grazing marsh. Some overlap with Lowland Meadows and with Purple Moor Grass and Rush Pastures.	7,776	2.00	158	2.00	169	-11
Lowland Fens	Comprehensive.	1,909	0.49				
Reedbeds	Not complete as OSMM translation inaccurate in places.	251	0.06	1.8	0.02	2	0
Coastal							
Coastal Saltmarsh	Near comprehensive, ongoing checking with OSMM and APs.	888	0.23	209	2.64	212	-3
Coastal Sand Dunes	Comprehensive.	47	0.01	39.5	0.50	40	0
Coastal Vegetated Shingle	Comprehensive.	215	0.06	46.6	0.59	46	0
Intertidal Mudflats	Near comprehensive, ongoing checking with OSMM and APs	4,234	1.09	1,239	15.66	1,324	-85
Maritime Cliff and Slopes	Comprehensive.	41	0.01	0.8	0.01	1	0
Saline Lagoons	Comprehensive.	72	0.02	5.8	0.07	5	1

Priority Habitat	Comments on Status	Combined Hants area (ha)	% of Combined Hants area	HVBC area (ha)	% of HVBC area	2020/21 HVBC area (ha)	Change in area (ha)
Marine							
Seagrass Beds	Comprehensive. HIOWWT data incorporated	348	0.09	197.8	2.50	45	152
Total		81,100	20.88	2,199	27.80	2,143	56

Summary:

Despite on-going problems correcting the OSMM translation and issues with the habitat data capture tool most significant errors were corrected, but there still remain a few.

Coastal Floodplain and Grazing Marsh was reviewed where areas lie predominantly outside the flood zone modelled by EA.

The integration of a layer of Seagrass beds from the HIOWWT increased the area of Seagrass Beds and decreased the area of Intertidal Mudflats.

Notes:

1. The Hampshire and district totals of Priority habitat are the sum of the individual Priority habitat types (excluding Arable Field Margins). This is not the total area of land covered by Priority habitat within Hampshire and each district because some Priority habitat types overlap and hence are double counted (e.g. Coastal and Floodplain Grazing Marsh may overlap Lowland Meadows or Purple Moor Grass and Rush Pastures).
2. Because the total area of Priority habitat may include areas when habitats overlap the % of the district area covered by Priority habitat may be slightly over-exaggerated.
3. Minor changes in area might not always reflect real change but are results of a rounding of figures.

15.2 Nature Conservation Designations

Table 15B: Extent of Nature Conservation Designations (as at 31st March 2022)

Designation	Combined Hants sites (no)	Combined Hants area (ha)	Combined Hants area (%)	HVBC sites (no)	HVBC area (ha)	HVBC area (%)	2020/21 HVBC area (ha)	Change (ha)
LNR	70	2,420	1	8	218	2.75	218	0
NNR	10	2,116	1	0	0	0.00	0	0
RAMSAR	6	36,993	10	1	2,430	30.72	2,430	0
SAC	13	37,091	10	1	2,269	28.69	2,270	0
SPA	11	44,093	11	2	2,556	32.31	2,556	0
SSSI	131	50,559	13	4	2,677	33.84	2,677	0
Stat Sites Combined	241	53,436	14	16	2,724	34.44	2,726	-1
SINC	4,119	35,723	9	110	551	6.97	551	0

Summary:

1. There were changes to statutory sites during 2021/22.
2. For details of any new, amended and deleted SINC's see tables 15G, H & I.

Notes:

1. The areas total for 'Statutory sites combined' may not equal the total for each of the individual statutory site designations because there is often an overlap between statutory designations.

Table 15C: Statutory Designated Sites (as at 31st March 2022)

Designation	Site Name	Area (ha) within district
LNR	Brook Meadow (Emsworth)	3.35
LNR	Farlington Marshes	1.26
LNR	Gutner Point	68.99
LNR	Hayling Billy	42.02
LNR	Hazleton Common LNR	1.39
LNR	Sandy Point	18.32
LNR	The Kench, Hayling Island	6.04
LNR	West Hayling	76.23
Ramsar	Chichester and Langstone Harbours	2,429.96
SAC	Solent Maritime	2,269.34
SPA	Chichester and Langstone Harbours	2,429.96
SPA	Solent and Dorset Coast	125.57
SSSI	Chichester Harbour	1,005.77
SSSI	Langstone Harbour	1,424.19
SSSI	Sinah Common	242.75
SSSI	Warblington Meadow	3.87

15.3 Priority Habitats within Designated Sites**Table 15D: Extent of Priority habitats within Designated Sites (as at 31st March 2022)**

Designated Sites	Combined Hants area (ha)	Combined Hants area (%)	HVBC (ha)	HVBC area (%)	2020/21 HVBC area (ha)	Change area (ha)
Statutory sites combined	39,401	48.6	1,799	81.8	1,728	71
SINC	22,187	27.4	309	14.1	313	-4
Total combined	60,756	74.9	2,096	95.3	2,029	67

Summary:

1. Approx. 95% of Priority habitat in Havant lies within designated sites.

Notes:

1. Total Priority habitat in Havant as at 31st March 2022 = 2,199ha.

15.4 Condition of Sites of Special Scientific Interest (SSSIs)

Table 15E: Conditions of Sites of Special Scientific Interest (SSSIs) (as at 31st March 2022)

Condition	Combined Hants area (ha)	Combined Hants area (%)	HVBC area (ha)	HVBC area (%)	2020/21 HVBC area (ha)	Change in area (ha)
Favourable	23,773.52	47.0	59.19	2.2	47.44	11.75
Unfavourable Recovering	21,263.37	42.1	1,694.81	63.3	1,694.81	0.00
Unfavourable no Change	3,638.84	7.2	50.93	1.9	62.68	-11.75
Unfavourable Declining	1,860.47	3.7	871.65	32.6	871.65	0.00
Part Destroyed	6.34	0.0	0.00	0.0	0.00	0.00
Destroyed	17.44	0.0	0.00	0.0	0.00	0.00
Grand Total	50,559.97	100.0	2,676.58	100.0	2,676.58	0.00

Notes:

1. Although data has been provided by Natural England the total amount of SSSI may differ from NE figures because NE do not always assign a portion of an SSSI to the correct District where the majority of that SSSI occurs within another District, whereas HBIC are able to clip the SSSI management units directly to the district boundaries.
2. Any change in area is due to NE re-digitising boundaries. The number of SSSIs remains the same.

15.5 SINC changes observed and recorded

Table 15F: Extent of changes to SINCS observed and recorded between 1st April 2021 and 31st March 2022

SINCS	Hants sites (no)	Hants sites (area)	HVBC sites (no)	HVBC sites (area)
Total sites (2020/21)	4,109	35,742.43	110	551.09
New Sites	11	28.39		
Amended Sites	12	-46.51		
Deleted sites	1	-0.92		
Total sites (2021/22)	4,119	35,723.39	110	551.09
Net change	10	-19.04		0.00
% change in area		-10.27		0.00

Notes:

1. Data extracted from HBIC SINC layer and database between 1st April 2021 and 31st March 2022.
2. The totals in the previous report were not correct. See Section 1.2.6. This report now uses the correct figures.

Table 15G: New SINC approved between 1st April 2021 and 31st March 2022

No new SINC in Havant Borough Council were approved during 2021-2022.

Table 15H: Deleted SINC approved between 1st April 2021 and 31st March 2022

No SINC in Havant Borough Council were deleted during 2021-2022.

Table 15I: Major amendments to SINC between 1st April 2021 and 31st March 2022

No major amendments were made to SINC in Havant Borough Council during 2021-2022.

17 New Forest National Park Authority

17.1 Priority habitats

Table 17A: Extent of Priority habitats (as at 31st March 2022)

Priority Habitat	Comments on Status	Combined Hants area (ha)	% of Combined Hants area	NFNPA area (ha)	% of NFNPA area	2020/21 NFNPA area (ha)	Change in area (ha)
Grasslands							
Lowland Calcareous Grassland	Comprehensive	2,026	0.52	0	0.00	0	0
Lowland Dry Acid Grassland	Comprehensive. Some overlap with Lowland Heath	3,710	0.96	3,133	5.53	3,038	95
Lowland Meadows	Comprehensive. Some overlap with Coastal and Floodplain Grazing Marsh and with Wood-Pasture and Parkland.	1,511	0.39	278	0.49	309	-31
Purple Moor Grass and Rush Pastures	Comprehensive. Some overlap with Coastal and Floodplain Grazing Marsh.	1,593	0.41	1,043	1.84	1,042	1
Heathlands							
Lowland Heathland	Comprehensive. Some overlap with Lowland Dry Acid Grassland.	12,157	3.13	10,142	17.90	9,968	174
Woodland, wood-pasture and parkland							
Lowland Beech and Yew Woodland	Not complete. Ongoing work to distinguish from Lowland Mixed Deciduous Woodland.	444	0.11	94.3	0.17	89	6
Lowland Mixed Deciduous Woodland	Ongoing work as all ancient/non ancient woodland has been included yet not all has been surveyed for qualifying NVC types. Also ongoing to remove small clumps.	35,485	9.13	6,578	11.61	6,621	-43
Wet Woodland	Fairly complete. Areas will exist in LMDW that are not yet surveyed for qualifying types.	2,205	0.57	491	0.87	496	-5
Wood-Pasture and Parkland	Not complete. Further work needed to classify this habitat within historic parkland.	5,487	1.41	4,381	7.73	4,305	76

Priority Habitat	Comments on Status	Combined Hants area (ha)	% of Combined Hants area	NFNPA area (ha)	% of NFNPA area	2020/21 NFNPA area (ha)	Change in area (ha)
Arable, orchards and hedgerows							
Arable Field Margins	Incomplete. Figures only show SINCs on arable land designated for rare arable plant assemblages.	[94]	[0.02]	[0.0]	[0.00]	[0]	[0]
Open Mosaic Habitats on Previously Developed Land	No comprehensive evaluation yet carried out. Two sites with HBIC field surveys.	33	0.01				
Hedgerows	No comprehensive information for Priority hedgerows. All hedgerows mapped as linear features (km).	[16,448]	n/a	[1,922]	n/a	[1,922]	[0]
Traditional Orchards	Work to be undertaken to incorporate areas recently identified by PTES.	0	0.00				
Open waters							
Ponds	No comprehensive information yet available, only from HBIC field surveys.	83	0.02				
Rivers	Incomplete data. Figures for Chalk Rivers now digitised from latest OSMM polygons as Ha not from EA linear (km) as previously.	585	0.15	28	0.05	28	0
Wetlands							
Coastal and Floodplain Grazing Marsh	Work ongoing to verify all qualifying grazing marsh. Some overlap with Lowland Meadows and with Purple Moor Grass and Rush Pastures.	7,776	2.00	1,132	2.00	1,372	-240
Lowland Fens	Comprehensive.	1,909	0.49	1,858	3.28	1,849	9
Reedbeds	Not complete as OSMM translation inaccurate in places.	251	0.06	59.6	0.11	58	2

Priority Habitat	Comments on Status	Combined Hants area (ha)	% of Combined Hants area	NFNPA area (ha)	% of NFNPA area	2020/21 NFNPA area (ha)	Change in area (ha)
Coastal							
Coastal Saltmarsh	Near comprehensive, ongoing checking with OSMM and APs.	888	0.23	374	0.66	374	0
Coastal Sand Dunes	EA data partly verified.	47	0.01	5.3	0.01	5	0
Coastal Vegetated Shingle	Comprehensive.	215	0.06	46.9	0.08	49	-2
Intertidal Mudflats	Near comprehensive, ongoing checking with OSMM and APs.	4,234	1.09	842	1.49	838	4
Maritime Cliff and Slopes	Comprehensive.	41	0.01	1.8	0.00	3	-1
Saline Lagoons	Comprehensive.	72	0.02	44.1	0.08	33	11
Marine							
Seagrass Beds	Comprehensive. HIOWWT data incorporated.	348	0.09	4.1	0.01		4
Total		81,100	20.88	30,536	53.90	30,475	61

Summary:

Despite on-going problems correcting the OSMM translation and issues with the habitat data capture tool most significant errors were corrected, but there still remain a few.

Floodplain and Grazing Marsh was reviewed where areas lie predominantly outside the flood zone modelled by EA and/or were now arable.

There were gains of Lowland Heathland and acid grassland following clearance of plantation, using SSSI Condition Assessment data.

Losses of Lowland meadow was mostly tiny fragments as a result of tidying up boundaries, one larger loss to woodland and one error from the OSMM translation (c3ha meadow to garden) to be rectified

The integration of a layer of Seagrass beds from the HIOWWT has increased the area of Seagrass Beds and decreased the area of Intertidal Mudflats.

Notes:

1. The Hampshire and district totals of Priority habitat are the sum of the individual Priority habitat types (excluding Arable Field Margins). This is not the total area of land covered by Priority habitat within Hampshire and each district because some Priority habitat types overlap and hence are double counted (e.g. Coastal and Floodplain Grazing Marsh may overlap Lowland Meadows or Purple Moor Grass and Rush Pastures).
2. Because the total area of Priority habitat may include areas when habitats overlap the % of the district area covered by Priority habitat may be slightly over-exaggerated.
3. Minor changes in area might not always reflect real change but are results of a rounding of figures.

17.2 Nature Conservation Designations

Table 17B: Extent of Nature Conservation Designations (as at 31st March 2022)

Designation	Combined Hants sites (no)	Combined Hants area (ha)	Combined Hants area (%)	NFNPA sites (no)	NFNPA area (ha)	NFNPA area (%)	2020/21 NFNPA area (ha)	Change (ha)
LNR	70	2,420	1	4	416	0.73	416	0
NNR	10	2,116	1	2	1,142	2.02	1,199	-57
RAMSAR	6	36,993	10	3	30,151	53.22	30,151	0
SAC	13	37,091	10	4	30,641	54.09	30,639	1
SPA	11	44,093	11	4	30,122	53.17	30,122	0
SSSI	131	50,559	13	20	32,189	56.82	32,189	0
Stat Sites Combined	241	53,436	14	32	32,266	56.95	32,267	-1
SINC	4,119	35,723	9	397	3,033	5.35	3,028	5

Summary:

1. There were changes to statutory sites during 2021/22.
2. For details of any new, amended and deleted SINC's see tables 17G, H & I.
3. Loss of Kingston Great Common LNR undeclared in September 2021

Notes:

1. The areas total for 'Statutory sites combined' may not equal the total for each of the individual statutory site designations because there is often an overlap between statutory designations.

Table 17C: Statutory Designated Sites (as at 31st March 2022)

Designation	Site Name	Area (ha) within district
LNR	Boldre Foreshore	193.29
LNR	Calshot Marshes	51.14
LNR	Lepe Point	4.49
LNR	Lymington-Keyhaven Marshes	167.45
NNR	Langley Wood	217.79
NNR	North Solent	923.82
Ramsar	Avon Valley	0.04
Ramsar	New Forest	27,996.92
Ramsar	Solent & Southampton Water	2,154.49
SAC	River Avon	33.58
SAC	Solent & Isle of Wight Lagoons	22.08
SAC	Solent Maritime	1,340.95
SAC	The New Forest	29,244.21
SPA	Avon Valley	0.04
SPA	New Forest	27,996.92
SPA	Solent & Southampton Water	2,124.44
SPA	Solent and Dorset Coast	1.22
SSSI	Avon Valley (Bickton to Christchurch)	1.21
SSSI	Burton Common	39.00
SSSI	Dibden Bay	7.52
SSSI	Fletchwood Meadows	7.63
SSSI	Hurst Castle and Lymington River Estuary	1,027.37
SSSI	Hythe to Calshot Marshes	159.65
SSSI	Landford Bog	9.12
SSSI	Landford Heath	11.69
SSSI	Langley Wood and Homan's Copse	220.32
SSSI	Loosehanger Copse and Meadows	56.54
SSSI	Lymington River	34.84
SSSI	Lymington River Reedbeds	41.75
SSSI	Norley Copse and Meadow	7.47
SSSI	North Solent	1,184.29
SSSI	Poors Common	47.39
SSSI	River Avon System	35.76
SSSI	Roydon Woods	294.94
SSSI	Sowley Pond	49.27
SSSI	The New Forest	28,889.55
SSSI	Whiteparish Common	63.70

17.3 Priority Habitats within Designated Sites

Table 17D: Extent of Priority habitats within Designated Sites (as at 31st March 2022)

Designated Sites	Combined Hants area (ha)	Combined Hants area (%)	NFNPA (ha)	NFNPA area (%)	2020/21 NFNPA area (ha)	Change area (ha)
Statutory sites combined	39,401	48.6	25,984	85.1	25,696	288
SINC	22,187	27.4	1,844	6.0	1,835	9
Total combined	60,756	74.9	27,819	91.1	27,521	298

Summary:

1. Approx. 91% of Priority habitat in New Forest NP lies within designated sites.

Notes:

1. Total Priority habitat in New Forest NP as at 31st March 2022 = 30,536ha.

17.4 Condition of Sites of Special Scientific Interest (SSSIs)

Table 17E: Conditions of Sites of Special Scientific Interest (SSSIs) (as at 31st March 2022)

Condition	Combined Hants area (ha)	Combined Hants area (%)	NFNPA area (ha)	NFNPA area (%)	2020/21 NFNPA area (ha)	Change in area (ha)
Favourable	23,773.52	47.0	17,174.92	53.4	17,244.18	-69.26
Unfavourable Recovering	21,263.37	42.1	12,892.34	40.1	13,401.84	-509.50
Unfavourable no Change	3,638.84	7.2	1,405.74	4.4	977.40	428.34
Unfavourable Declining	1,860.47	3.7	713.56	2.2	563.15	150.41
Part Destroyed	6.34	0.0	0.00	0.0	0.00	0.00
Destroyed	17.44	0.0	2.46	0.0	2.46	0.00
Grand Total	50,559.97	100.0	32,189.02	100.0	32,189.02	0.00

Notes:

1. Although data has been provided by Natural England the total amount of SSSI may differ from NE figures because NE do not always assign a portion of an SSSI to the correct District where the majority of that SSSI occurs within another District, whereas HBIC are able to clip the SSSI management units directly to the district boundaries.
2. Any change in area is due to NE re-digitising boundaries. The number of SSSIs remains the same.

17.5 SINC changes observed and recorded

Table 17F: Extent of changes to SINC observed and recorded between 1st April 2021 and 31st March 2022

SINCS	Hants sites (no)	Hants sites (area)	NFNPA sites (no)	NFNPA sites (area)
Total sites (2020/21)	4,109	35,742.43	395	3,028.16
New Sites	11	28.39	2	4.95
Amended Sites	12	-46.51		
Deleted sites	1	-0.92		
Total sites (2021/22)	4,119	35,723.39	397	3,033.11
Net change	10	-19.04	2	4.95

Notes:

1. Data extracted from HBIC SINC layer and database between 1st April 2021 and 31st March 2022.
2. The totals in the previous report were not correct – see Section 1.2.6 This report now uses the correct figures.

Table 17G: New SINCS approved between 1st April 2021 and 31st March 2022

Site Ref	Site Name	New Size (ha)	New Criteria	Panel date
NP0415	Oak Copse, Bramshaw	2.86	1A/1B	May 2021
NP0414	Furze Copse, Bramshaw	2.09	1A	May 2021

Table 17H: Deleted SINCS approved between 1st April 2021 and 31st March 2022

No SINCS in New Forest National Park Authority were deleted during 2021-2022.

Table 17I: Major amendments to SINCS between 1st April 2021 and 31st March 2022

No major amendments were made to SINCS in New Forest National Park Authority during 2021-2022.

18 Portsmouth City Council

18.1 Priority habitats

Table 18A: Extent of Priority habitats (as at 31st March 2022)

Priority Habitat	Comments on Status	Combined Hants area (ha)	% of Combined Hants area	PCC area (ha)	% of PCC area	2020/21 PCC area (ha)	Change in area (ha)
Grasslands							
Lowland Calcareous Grassland	Comprehensive	2,026	0.52	55	0.91	55	0
Lowland Dry Acid Grassland	Comprehensive. Some overlap with Lowland Heath	3,710	0.96	7	0.12	7	0
Lowland Meadows	Comprehensive. Some overlap with Coastal and Floodplain Grazing Marsh and with Wood-Pasture and Parkland.	1,511	0.39	25	0.42	20	5
Purple Moor Grass and Rush Pastures	Comprehensive. Some overlap with Coastal and Floodplain Grazing Marsh.	1,593	0.41				
Heathlands							
Lowland Heathland	Comprehensive. Some overlap with Lowland Dry Acid Grassland.	12,157	3.13				
Woodland, wood-pasture and parkland							
Lowland Beech and Yew Woodland	Not complete. On-going work to distinguish from Lowland Mixed Deciduous Woodland.	444	0.11				
Lowland Mixed Deciduous Woodland	Ongoing work as all ancient/non ancient woodland has been included yet not all has been surveyed for qualifying NVC types. Also ongoing to remove small clumps.	35,485	9.13	7	0.12	7	0
Wet Woodland	Fairly complete. Areas will exist in LMDW that are not yet surveyed for qualifying types.	2,205	0.57	1	0.02	1	0
Wood-Pasture and Parkland	Not complete. Further work needed to classify this habitat within historic parkland.	5,487	1.41	8	0.13	8	0

Priority Habitat	Comments on Status	Combined Hants area (ha)	% of Combined Hants area	PCC area (ha)	% of PCC area	2020/21 PCC area (ha)	Change in area (ha)
Arable, orchards and hedgerows							
Arable Field Margins	Incomplete. Figures only show SINC's on arable land designated for rare arable plant assemblages.	[94]	[0.02]	[0.0]	[0.00]	[0]	[0]
Open Mosaic Habitats on Previously Developed Land	No comprehensive evaluation yet carried out. Two sites with HBIC field surveys.	33	0.01				
Hedgerows	No comprehensive information for Priority hedgerows. All hedgerows mapped as linear features (km).	[16,448]	n/a	[66]	n/a	[66]	[0]
Traditional Orchards	Work to be undertaken to incorporate areas recently identified by PTES.	0	0.00				
Open waters							
Ponds	No comprehensive information yet available. Only from field surveys	83	0.02				
Rivers	Incomplete data. Figures for Chalk Rivers now digitised from latest OSMM polygons as Ha not from EA linear (km) as previously.	585	0.15				
Wetlands							
Coastal and Floodplain Grazing Marsh	Work ongoing to verify all qualifying grazing marsh. Some overlap with Lowland Meadows and with Purple Moor Grass and Rush Pastures.	7,776	2.00	88	1.46	89	-1
Lowland Fens	Comprehensive.	1,909	0.49				
Reedbeds	Not complete as OSMM translation inaccurate in places.	251	0.06	19.4	0.32	20	-1
Coastal							
Coastal Saltmarsh	Near comprehensive, ongoing checking with OSMM and APs.	888	0.23	53	0.88	59	-6
Coastal Sand Dunes	EA data partly verified.	47	0.01	0.3	0.00	0	0
Coastal Vegetated Shingle	Comprehensive.	215	0.06	20.9	0.35	21	0
Intertidal Mudflats	Near comprehensive, ongoing checking with OSMM and APs..	4,234	1.09	1,065	17.71	1,174	-109
Maritime Cliff and Slopes	Comprehensive.	41	0.01				
Saline Lagoons	Comprehensive.	72	0.02	3.6	0.06	4	0

Priority Habitat	Comments on Status	Combined Hants area (ha)	% of Combined Hants area	PCC area (ha)	% of PCC area	2020/21 PCC area (ha)	Change in area (ha)
Marine							
Seagrass Beds	Comprehensive. HIOWWT data incorporated.	348	0.09	125.3	2.08	3	122
Total		81,100	20.88	1,479	24.58	1,468	10

Summary:

Despite on-going problems correcting the OSMM translation and issues with the habitat data capture tool most significant errors were corrected, but there still remain a few.

Coastal Floodplain and Grazing Marsh was reviewed where areas lie predominantly outside the flood zone modelled by EA.

The integration of a layer of Seagrass beds from the HIWWT increased the area of Seagrass Beds and decreased the area of Intertidal Mudflats and Coastal Saltmarsh.

There were gains of Lowland Meadows in 'East of Lakeside and Fort Cumberland' and surroundings due to more recent surveys.

Notes:

1. The Hampshire and district totals of Priority habitat are the sum of the individual Priority habitat types (excluding Arable Field Margins). This is not the total area of land covered by Priority habitat within Hampshire and each district because some Priority habitat types overlap and hence are double counted (e.g. Coastal and Floodplain Grazing Marsh may overlap Lowland Meadows or Purple Moor Grass and Rush Pastures).
2. Because the total area of Priority habitat may include areas when habitats overlap the % of the district area covered by Priority habitat may be slightly over-exaggerated.
3. Minor changes in area might not always reflect real change, but are results of a rounding of figures.

18.2 Nature Conservation Designations

Table 18B: Extent of Nature Conservation Designations (as at 31st March 2022)

Designation	Combined Hants sites (no)	Combined Hants area (ha)	Combined Hants area (%)	PCC sites (no)	PCC area (ha)	PCC area (%)	2020/21 PCC area (ha)	Change (ha)
LNR	70	2,420	1	1	118	1.97	118	0
NNR	10	2,116	1	0	0	0.00	0	0
RAMSAR	6	36,993	10	2	1,708	28.40	1,708	0
SAC	13	37,091	10	2	542	9.02	542	0
SPA	11	44,093	11	3	2,093	34.80	2,093	0
SSSI	131	50,559	13	3	1,787	29.71	1,787	0
Stat Sites Combined	241	53,436	14	11	2,172	36.12	2,172	0
SINC	4,119	35,723	9	26	339	5.64	339	0

Summary:

1. There were no changes to statutory sites during 2021/22.
2. For details of any new, amended and deleted SINCs see tables 18G, H & I.

Notes:

1. The areas total for 'Statutory sites combined' may not equal the total for each of the individual statutory site designations because there is often an overlap between statutory designations.
2. The SPAs 'Solent and Dorset Coast' and 'Portsmouth Harbour' overlap. In the previous report the overlapping area was counted twice. This report uses now corrected figures.

Table 18C: Statutory Designated Sites (as at 31st March 2022)

Designation	Site Name	Area (ha) within district
LNR	Farlington Marshes	118.43
Ramsar	Chichester and Langstone Harbours	655.03
Ramsar	Portsmouth Harbour	1,052.88
SAC	Solent & Isle of Wight Lagoons	1.80
SAC	Solent Maritime	540.64
SPA	Chichester and Langstone Harbours	655.03
SPA	Portsmouth Harbour	1,052.88
SPA	Solent and Dorset Coast	1,428.99
SSSI	Langstone Harbour	661.08
SSSI	Portsdown	62.84
SSSI	Portsmouth Harbour	1,063.03

18.3 Priority Habitats within Designated Sites**Table 18D: Extent of Priority habitats within Designated Sites (as at 31st March 2022)**

Designated Sites	Combined Hants area (ha)	Combined Hants area (%)	PCC (ha)	PCC area (%)	2020/21 PCC area (ha)	Change area (ha)
Statutory sites combined	39,401	48.6	1,375	93.0	1,368	7
SINC	22,187	27.4	178	12.0	174	4
Total combined	60,756	74.9	1,438	97.3	1,428	10

Summary:

1. Approx. 97% of Priority habitat in Portsmouth lies within designated sites.

Notes:

1. Total Priority habitat in Portsmouth as at 31st March 2022 = 1,478ha.

18.4 Condition of Sites of Special Scientific Interest (SSSIs)

Table 18E: Conditions of Sites of Special Scientific Interest (SSSIs) (as at 31st March 2022)

Condition	Combined Hants area (ha)	Combined Hants area (%)	PCC area (ha)	PCC area (%)	2020/21 PCC area (ha)	Change in area (ha)
Favourable	23,773.52	47.0	168.51	9.4	170.31	-1.80
Unfavourable Recovering	21,263.37	42.1	868.80	48.6	868.80	0.00
Unfavourable no Change	3,638.84	7.2	747.85	41.9	746.05	1.80
Unfavourable Declining	1,860.47	3.7	0.00	0.0	0.00	0.00
Part Destroyed	6.34	0.0	0.00	0.0	0.00	0.00
Destroyed	17.44	0.0	1.79	0.1	1.79	0.00
Grand Total	50,559.97	100.0	1,786.95	100.0	1,786.95	0.00

Notes:

1. Although data has been provided by Natural England the total amount of SSSI may differ from NE figures because NE do not always assign a portion of an SSSI to the correct District where the majority of that SSSI occurs within another District, whereas HBIC are able to clip the SSSI management units directly to the district boundaries.
2. Any change in area is due to NE re-digitising boundaries. The number of SSSIs remains the same.

18.5 SINC changes observed and recorded

Table 18F: Extent of changes to SINCS observed and recorded between 1st April 2021 and 31st March 2022

SINCS	Hants sites (no)	Hants sites (area)	PCC sites (no)	PCC sites (area)
Total sites (2020/21)	4,109	35,742.43	26	339.02
New Sites	11	28.39		
Amended Sites	12	-46.51		
Deleted sites	1	-0.92		
Total sites (2021/22)	4,119	35,723.39	26	339.02
Net change	10	-19.04		0.00
% change in area		-10.27		0.00

Notes:

1. Data extracted from HBIC SINC layer and database between 1st April 2021 and 31st March 2022.
2. The totals in the previous report were not correct. See Section 1.2.6. This report now uses the correct figures.

Table 18G: New SINC approved between 1st April 2021 and 31st March 2022

No new SINC in Portsmouth City Council were approved during 2021-2022.

Table 18H: Deleted SINC approved between 1st April 2020 and 31st March 2022

No SINC in Portsmouth City Council were deleted during 2021-2022.

Table 18I: Major amendments to SINC between 1st April 2021 and 31st March 2022

No major amendments were made to SINC in Portsmouth City Council during 2021-2022.

22 Winchester City Council

22.1 Priority habitats

Table 22A: Extent of Priority habitats (as at 31st March 2022)

Priority Habitat	Comments on Status	Combined Hants area (ha)	% of Combined Hants area	WCC area (ha)	% of WCC area	2020/21 WCC area (ha)	Change in area (ha)
Grasslands							
Lowland Calcareous Grassland	Comprehensive	2,026	0.52	346	0.52	346	0
Lowland Dry Acid Grassland	Comprehensive. Some overlap with Lowland Heath	3,710	0.96	14	0.02	9	5
Lowland Meadows	Comprehensive. Some overlap with Coastal and Floodplain Grazing Marsh and with Wood-Pasture and Parkland.	1,511	0.39	296	0.45	292	4
Purple Moor Grass and Rush Pastures	Comprehensive. Some overlap with Coastal and Floodplain Grazing Marsh.	1,593	0.41	91	0.14	89	2
Heathlands							
Lowland Heathland	Comprehensive. Some overlap with Lowland Dry Acid Grassland.	12,157	3.13	2	0.00	2	0
Woodland, wood-pasture and parkland							
Lowland Beech and Yew Woodland	Not complete. On-going work to distinguish from Lowland Mixed Deciduous Woodland.	444	0.11	35.4	0.05	35	0
Lowland Mixed Deciduous Woodland	Ongoing work as all ancient/non ancient woodland has been included yet not all has been surveyed for qualifying NVC types. Also ongoing to remove small clumps.	35,485	9.13	5,948	9.00	5,933	15
Wet Woodland	Fairly complete. Areas will exist in LMDW that are not yet surveyed for qualifying types.	2,205	0.57	239	0.36	238	1
Wood-Pasture and Parkland	Not complete. Further work needed to classify this habitat within historic parkland.	5,487	1.41	118	0.18	119	-1

Priority Habitat	Comments on Status	Combined Hants area (ha)	% of Combined Hants area	WCC area (ha)	% of WCC area	2020/21 WCC area (ha)	Change in area (ha)
Arable, orchards and hedgerows							
Arable Field Margins	Incomplete. Figures only show SINC's on arable land designated for rare arable plant assemblages.	[94]	[0.02]	[2.2]	[0.00]	[2]	[0]
Open Mosaic Habitats on Previously Developed Land	No comprehensive evaluation yet carried out. Two sites with HBIC field surveys.	33	0.01				
Hedgerows	No comprehensive information for Priority hedgerows. All hedgerows mapped as linear features (km).	[16,448]	n/a	[3,036]	n/a	[3,036]	[0]
Traditional Orchards	Work to be undertaken to incorporate areas recently identified by PTES.	0	0.00				
Open waters							
Ponds	No comprehensive information yet available.	83	0.02				
Rivers	Incomplete data. Figures for Chalk Rivers now digitised from latest OSMM polygons as Ha not from EA linear (km) as previously.	585	0.15	121	0.18	121	0
Wetlands							
Coastal and Floodplain Grazing Marsh	Work ongoing to verify all qualifying grazing marsh. Some overlap with Lowland Meadows and with Purple Moor Grass and Rush Pastures.	7,776	2.00	907	1.37	1,195	-288
Lowland Fens	Comprehensive.	1,909	0.49	5	0.01	6	-1
Reedbeds	Not complete as OSMM translation inaccurate in places.	251	0.06	19.9	0.03	20	0
Coastal							
Coastal Saltmarsh	Near comprehensive, ongoing checking with OSMM and APs..	888	0.23	2	0.00	2	0
Coastal Sand Dunes	EA data partly verified.	47	0.01				
Coastal Vegetated Shingle	Comprehensive.	215	0.06				
Intertidal Mudflats	Near comprehensive, ongoing checking with OSMM and APs.	4,234	1.09	6	0.01	6	0
Maritime Cliff and Slopes	Comprehensive.	41	0.01				
Saline Lagoons	Comprehensive.	72	0.02				

Priority Habitat	Comments on Status	Combined Hants area (ha)	% of Combined Hants area	WCC area (ha)	% of WCC area	2020/21 WCC area (ha)	Change in area (ha)
Marine							
Seagrass Beds	Comprehensive. Data from HIOWWT incorporated.	348	0.09				
Total		81,100	20.88	8,150	12.33	8,413	-263

Summary:

Despite on-going problems correcting the OSMM translation and issues with the habitat data capture tool most significant errors were corrected, but there still remain a few.

Some areas of Floodplain and Grazing Marsh were removed because they mostly lie outside of the flood zone modelled by EA and/or are now arable.

The integration of a layer of Seagrass beds from the HIOWWT has increased the area of Seagrass Beds and decreased the area of Intertidal Mudflats.

The gain of 5ha of acid grassland is an error caused by the habitat data capture tool which led to habitat information in the database being linked to wrong polygon. This will be corrected next time round.

Notes:

1. The Hampshire and district totals of Priority habitat are the sum of the individual Priority habitat types (excluding Arable Field Margins). This is not the total area of land covered by Priority habitat within Hampshire and each district because some Priority habitat types overlap and hence are double counted (e.g. Coastal and Floodplain Grazing Marsh may overlap Lowland Meadows or Purple Moor Grass and Rush Pastures).
2. Because the total area of Priority habitat may include areas when habitats overlap the % of the district area covered by Priority habitat may be slightly over-exaggerated.
3. Minor changes in area might not always reflect real change but are results of a rounding of figures.

22.2 Nature Conservation Designations

Table 22B: Extent of Nature Conservation Designations (as at 31st March 2022)

Designation	Combined Hants sites (no)	Combined Hants area (ha)	Combined Hants area (%)	WCC sites (no)	WCC area (ha)	WCC area (%)	2020/21 WCC area (ha)	Change (ha)
LNR	70	0	0	9	103	0.16	103	0
NNR	10	0	0	2	103	0.16	103	0
RAMSAR	6	4	0	1	23	0.03	23	0
SAC	13	4	0	2	182	0.28	182	0
SPA	11	4	0	1	23	0.03	23	0
SSSI	131	5	0	18	1,313	1.99	1,313	0
Stat Sites Combined	241	5	0	33	1,365	2.06	1,365	0
SINC	4,119	35,723	0	695	6,463	9.78	6,465	-2

Summary:

1. There were no changes to statutory sites during 2021/22.
2. For details of any new, amended and deleted SINC's see tables 22G, H & I.

Notes:

1. The areas total for 'Statutory sites combined' may not equal the total for each of the individual statutory site designations because there is often an overlap between statutory designations.

Table 22C: Statutory Designated Sites (as at 31st March 2022)

Designation	Site Name	Area (ha) within district
LNR	Berry Coppice	2.99
LNR	Bishops Waltham Branch Line	1.62
LNR	Claylands	5.78
LNR	Crab Wood	37.75
LNR	Dundridge Meadows	7.48
LNR	Gull Coppice	7.12
LNR	Round Coppice	6.35
LNR	Shawford Down	19.65
LNR	The Moors, Bishops Waltham	14.47
NNR	Beacon Hill	40.06
NNR	Old Winchester Hill	62.82
Ramsar	Solent & Southampton Water	22.92
SAC	River Itchen	158.14
SAC	Solent Maritime	24.00
SPA	Solent & Southampton Water	22.92
SSSI	Alresford Pond	30.17
SSSI	Beacon Hill, Warnford	46.45
SSSI	Botley Wood and Everett's and Mushes Copses	352.69
SSSI	Cheesefoot Head	13.41
SSSI	Crab Wood	73.00
SSSI	Galley Down Wood	16.65
SSSI	Hook Heath Meadows	5.86
SSSI	Lye Heath Marsh	4.37
SSSI	Micheldever Spoil Heaps	5.37
SSSI	Old Winchester Hill	66.17
SSSI	Peake Wood	17.75
SSSI	Ratlake Meadows	0.00
SSSI	River Itchen	575.57
SSSI	River Test	4.26
SSSI	St. Catherine's Hill	43.03
SSSI	The Moors, Bishop's Waltham	27.99
SSSI	Upper Hamble Estuary and Woods	24.00
SSSI	Waltham Chase Meadows	6.36

22.3 Priority Habitats within Designated Sites

Table 22D: Extent of Priority habitats within Designated Sites (as at 31st March 2022)

Designated Sites	Combined Hants area (ha)	Combined Hants area (%)	WCC (ha)	WCC area (%)	2020/21 WCC area (ha)	Change area (ha)
Statutory sites combined	39,401	48.6	1,097	13.5	1,093	5
SINC	22,187	27.4	3,887	47.7	3,851	36
Total combined	60,756	74.9	4,943	60.7	4,904	39

Summary:

1. Approx. 61% of Priority habitat in Winchester lies within designated sites.

Notes:

1. Total Priority habitat in Winchester as at 31st March 2022 = 8,150ha.

22.4 Condition of Sites of Special Scientific Interest (SSSIs)

Table 22E: Conditions of Sites of Special Scientific Interest (SSSIs) (as at 31st March 2022)

Condition	Combined Hants area (ha)	Combined Hants area (%)	WCC area (ha)	WCC area (%)	2020/21 WCC area (ha)	Change in area (ha)
Favourable	23,773.52	47.0	416.65	31.7	410.77	5.88
Unfavourable Recovering	21,263.37	42.1	615.52	46.9	627.09	-11.57
Unfavourable no Change	3,638.84	7.2	181.92	13.9	181.92	0.00
Unfavourable Declining	1,860.47	3.7	91.29	7.0	85.60	5.69
Part Destroyed	6.34	0.0	0.00	0.0	0.00	0.00
Destroyed	17.44	0.0	7.80	0.6	7.80	0.00
Grand Total	50,559.97	100.0	1,313.17	100.0	1,313.17	0.00

Notes:

1. Although data has been provided by Natural England the total amount of SSSI may differ from NE figures because NE do not always assign a portion of an SSSI to the correct District where the majority of that SSSI occurs within another District, whereas HBIC are able to clip the SSSI management units directly to the district boundaries.
2. Any change in area is due to NE re-digitising boundaries. The number of SSSIs remains the same.

22.5 SINC changes observed and recorded

Table 22F: Extent of changes to SINC observed and recorded between 1st April 2021 and 31st March 2022

SINCs	Hants sites (no)	Hants sites (area)	WCC sites (no)	WCC sites (area)
Total sites (2020/21)	4,109	35,742.43	695	6,464.74
New Sites	11	28.39		
Amended Sites	12	-46.51	3	-2.02
Deleted sites	1	-0.92		
Total sites (2021/22)	4,119	35,723.39	695	6,462.72
Net change	10	-19.04		-2.02
% change in area		-10.27		-0.03

Notes:

1. Data extracted from HBIC SINC layer and database between 1st April 2021 and 31st March 2022.
2. The totals in the previous report were not correct – see Section 1.2.6. This report now uses the correct figures.

The gain of one SINC from last year's number (694 → 695) can be explained by the splitting of the SINC 'Meadow between Disused Railway & River Meon' (WC0342) and a new SINC 'Meadow West of Deer Lodge' (WC0828) being created in 2019/20. In the database this SINC was marked as amendment, not as new, and so wasn't picked up.

Table 22G: New SINC approved between 1st April 2021 and 31st March 2022

No new SINC in Winchester City Council were approved during 2021-2022.

Table 22H: Deleted SINC approved between 1st April 2021 and 31st March 2022

No SINC in Winchester City Council were deleted during 2021-2022.

Table 22I: Major amendments to SINC between 1st April 2021 and 31st March 2022

Site Ref	Site Name	Reason	Old Size (ha)	New Size (ha)	Old Criteria	New Criteria
WC0071	Bushfield Camp - C	Lack of management	12.21	10.26		
WC0073	Bushfield Camp - B	Habitat Creation/Restoration			2D/6A	2B
WC0186	Round Coppice Meadow 1	Domestic/Amenity	0.95	0.88		

