



Hampshire Biodiversity
Information Centre

Monitoring Change in Priority Habitats, Priority Species and Designated Sites

For Local Plan Annual Monitoring Reports

2017/18 (including breakdown by district)

Including detailed chapters for

Basingstoke & Deane

Eastleigh

Fareham

Gosport

Havant

Produced by

Hampshire Biodiversity Information Centre

December 2018

Contents

1 Biodiversity Monitoring in Hampshire	4
2 Priority habitats.....	8
3 Nature Conservation Designations.....	13
4 Priority habitats within Designated Sites.....	14
5 Condition of Sites of Special Scientific Interest (SSSIs).....	15
6 SINC changes observed and recorded.....	17
7. SINC in Positive Management (SD 160) - No longer reported.....	18
8 Changes in Notable Species Status over the period 2008-2018	19
09 Basingstoke and Deane Borough Council	27
12 Fareham Borough Council	39
13 Gosport Borough Council.....	44
15 Havant Borough Council	49

This page is intentionally left blank.

Sharing information about Hampshire's wildlife

The Hampshire Biodiversity Information Centre Partnership includes local authorities, government agencies, wildlife charities and biological recording groups.

1 Biodiversity Monitoring in Hampshire

1.1 Background

The Localism Act 2011 requires every local authority to produce an Annual Monitoring Report containing information on a number of topics including the progress and effectiveness of the Local Plan, and the extent to which the planning policies set out in the Local Plan documents are being achieved. This can include policies covering biodiversity and nature conservation.

This is important to enable communities and interested parties to be aware of progress.

In addition, the National Planning Policy Framework (Section 171) states that; to protect and enhance biodiversity and geodiversity, plans should:

- promote the conservation, restoration and enhancement of priority habitats, ecological networks and the protection and recovery of priority species; and identify and pursue opportunities for securing measurable net gains for biodiversity.

The Hampshire Biodiversity Information Centre (HBIC) provides comprehensive information relating to biodiversity in Hampshire, working in partnership with both data users and data providers for public benefit. HBIC can monitor and measure change (gains and losses) in areas of designated sites and habitats by district/borough/unitary through the information it gathers and maintains on a Geographic Information System (GIS). HBIC can also provide information on species distribution and trends across Hampshire through the data it holds on behalf of its partner species recording groups and in consultation with them.

This report continues, as in previous years, to provide annual statistics to local authorities in order to record and monitor changes in priority habitats, designated sites and selected notable species.

1.2 Explanatory Notes

1.2.1 Mapping change in extent of priority habitat: The full extent of priority habitats in Hampshire is not fully known - and may never be fully known due to the dynamic state of our countryside and the difficulties of obtaining access to many areas. HBIC is working with its funding partners to improve information on Priority habitat extent and condition through the Hampshire Habitat Survey Programme and from other survey data that becomes available. This information is used by HBIC to maintain a GIS layer mapping the extent of broad and priority habitats in Hampshire.

Any 'gains' in Priority habitat can be due to additional unknown habitat being discovered, by habitat restoration or creation, or re-interpretation of old survey data.

Reasons for change are logged in the habitat data capture tool in the GIS. HBIC also logs changes to SINCs which has been recently re-surveyed. These can include losses of Priority habitat to development or agricultural improvement. Reasons are set out in the detailed District chapters of the report.

HBIC, along with many other local environmental records centres, has translated its habitat data into a classification system called IHS (Integrated Habitat System). It is not a straightforward 1:1 translation from the previous Phase 1 habitat categories into IHS and there will continue to be changes to the baseline which are solely due to the on-going re-interpretation of old survey into IHS.

More importantly, the Habitat GIS dataset has been converted into the OS MasterMap framework resulting in an increase in number of polygons from c80,000 to over several million. This new dataset requires careful on-going validation and tidying up of what was essentially an automated process, particularly as new datasets are incorporated from other organisations. As the MasterMap version used is now quite old an upgrade to the latest version is planned soon which may lead to further habitat/land-use changes as 'new development areas' are plugged into the habitat layer.

The habitat dataset is used for all HBIC's work; for data requests, screening planning applications etc., and for the production of this monitoring report.

Whilst for most Priority habitats there continues to be small changes in extent, as a result of new field survey or aerial photographic interpretation, for two habitats there may still be some significant changes in extent which are summarised below and have been referred to in previous monitoring reports:

Coastal salt marsh & Intertidal mudflats - all salt marsh data mapped by HBIC was overwritten with EA data during the 2011-12 period with a resulting 50% 'loss' of saltmarsh – where much of it had been re-interpreted as 'intertidal mudflats'. The two figures should therefore be treated together until such time as the data can be validated against more recent aerial photographs. It appears that the interpretation in the western Solent was accurate and agreed with HBIC's data whilst the eastern half was very patchy in its accuracy with not so much salt marsh not being visible (i.e. below high water).

The checking/re-interpretation of the EA coastal data is being undertaken as and when time allows.

1.2.2. Revised UK List of Priority Habitats: A further 16 Priority habitats were added to the UK List (NERC S41 list) during the 2011-12 period. For Hampshire, this includes 'Traditional Orchards' and 'Open mosaic habitats on previously developed land', along with an expansion in scope and definition of 'Hedgerows', 'Ponds' and 'Rivers'. The definitions still need refining for these habitats and a set of traditional orchard polygons created by the People's Trust for Endangered Species with funding from Natural England is currently being ground truthed by HBIC before being added to the GIS dataset. Similarly, for a reed bed dataset produced by the RSPB.

1.2.3 Mapping change in priority habitat extent due to development: As mentioned, it is difficult to identify changes in habitat extent or species status that have occurred solely due

to the impact of development, particularly within a given year, without further resources. A GIS layer of the boundaries of all completed planning permissions from the previous year would be needed, which would need to show the actual footprint of each development plus any mitigation measures, or restoration/ re-creation opportunities in order to predict any losses or gains in biodiversity. Meanwhile, the reasons for any changes in habitat extent observed from field survey are being logged but may often be due to development or some other land use change which has occurred since the last survey - which may be up to 10-20 years ago.

1.2.4 Assessment of changes in SSSI condition: The condition of priority habitats is currently known for those habitats designated as Sites of Special Scientific Interest (SSSIs) and for a random sample of SINC's that may be surveyed in any one year. Natural England conduct condition assessments on SSSIs on a rolling programme with some input from HBIC surveys. Information on the SSSI condition assessment is available from Natural England on the MAGIC website for the reporting period and has, for this report, been summarised at the precise District level.

1.2.5 Mapping changes in Sites of Importance for Nature Conservation: HBIC has responsibility for identifying, mapping and monitoring SINC's, and for maintaining an up to date GIS layer on behalf of the local planning authorities. HBIC's SINC's database records new SINC's, deleted SINC's and any amendments to individual SINC's, including minor changes to boundaries as a result of snapping to OS MasterMap. Many of the amendments and deletions will relate to changes that may have 'physically' occurred many years before the sites were re-surveyed but were only recorded and approved during this reporting period - similar to mapping changes in habitat extent.

Please note that the data within this report excludes SINC's which have been approved by the Panel but which remain as candidate SINC's due to objections from landowners who wish to provide their own evidence back to the SINC Panel. They are however shown on GIS updates to partners as Candidate SINC's. Any changes to SINC's during the 2017-18 period are described in full in the detailed District chapters.

1.2.6 Mapping change in species populations: HBIC holds over 6 million species records for Hampshire, a number that is increasing rapidly, particularly as technology for on-line recording improves. Whilst it can be difficult to detect species trends at the County level, let alone at a district level, a suite of 50 species have been chosen for which there appears to be good data and for which there is wide geographic spread. **It has been agreed that population trends for the 50 species should only be gathered every 5 years. The next review will be undertaken for the 2012-2022 period in 2022.** See Section 8.

1.2.7 Source/date for habitat and designations data: All statistics are based on the HBIC GIS layers archived at the end of March 2017 and March 2018 except for the SINC's data which is derived from the SINC's database once Panel approval has been given in March 2018 and the GIS layer updated in June 2018.

1.2.8 The New Forest: The New Forest National Park Authority area (which includes a small part of Test Valley and Wiltshire) and the New Forest District Council area are treated separately.

1.2.9 The South Downs National Park: only part of the SDNP lies within Hampshire, therefore separate analysis has not been done for that part of the national park.

Further explanatory notes and a summary of trends are given at the end of some of the tables.

2 Priority habitats

Table 1: Extent of Priority habitats in Hampshire (as at 31st March 2018)

Priority Habitat	Comments on Status	BDBC	EBC	EHDC	FBC	GBC	HDC	HvBC	NFDC	NFNPA	PCC	RBC	SCC	TVBC	WCC	Total Area (ha)	% of total Hants area	2016/17 Total area (ha)	Change in area (ha)
Grasslands																			
Lowland Calcareous Grassland	Comprehensive	222		343	17		3	5	285	0	55		1	762	367	2,060	0.5	2,056	4
Lowland Dry Acid Grassland	Comprehensive. Some overlap with Lowland Heath	24	1	172	6	9	193	21	41	3,058	7	69	2	64	11	3,678	1.0	3,675	3
Lowland Meadows	Comprehensive. Some overlap with Coastal and Floodplain Grazing Marsh and with Wood-Pasture and Parkland.	152	33	95	24	12	111	32	178	275	20	23	28	127	288	1,398	0.4	1,403	-5
Purple Moor Grass and Rush Pastures	Comprehensive. Some overlap with Coastal and Floodplain Grazing Marsh.	34	32	24	4	1	115	5	27	1,033		16	2	134	60	1,487	0.4	1,481	6
Heathlands																			
Lowland Heathland	Comprehensive. Some overlap with Lowland Dry Acid Grassland.	180	16	692	2	4	272	1	605	9,933		106	2	19	0	11,832	3.1	11,833	-1

Priority Habitat	Comments on Status	BDBC	EBC	EHDC	FBC	GBC	HDC	HvBC	NFDC	NFNPA	PCC	RBC	SCC	TVBC	WCC	Total Area (ha)	% of total Hants area	2016/17 Total area (ha)	Change in area (ha)
Woodland, wood-pasture and parkland																			
Lowland Beech and Yew Woodland	Not comprehensive. On-going work to distinguish from Lowland Mixed Deciduous Woodland.	8.6	0.7	91.4			0.4		2.2	88.3			0.1	48.9	39.6	280.0	0.1	281	-1
Lowland Mixed Deciduous Woodland	Ongoing work as all ancient <u>and</u> non ancient woodland has been included yet not all surveyed for qualifying NVC types.	6,278	544	5,553	455	77	2,602	185	1,599	6,657	8	219	269	5,846	5,965	36,257	9.3	36,051	206
Wet Woodland	Fairly comprehensive. Areas will exist in LMDW that have not yet been surveyed for qualifying types.	417	118	203	51	20	128	37	64	488	1	52	58	179	234	2,050	0.5	2,037	13
Wood-Pasture and Parkland	Not comprehensive. Further work needed to classify/verify this habitat within historic parkland.	506	3	17	22	15	214	15	4	4,448	10		67	105	119	5,545	1.4	5,540	5

Sharing information about Hampshire's wildlife

The Hampshire Biodiversity Information Centre Partnership includes local authorities, government agencies, wildlife charities and biological recording groups.



Hampshire Biodiversity Information Centre

Priority Habitat	Comments on Status	BDBC	EBC	EHDC	FBC	GBC	HDC	HvBC	NFDC	NFNPA	PCC	RBC	SCC	TVBC	WCC	Total Area (ha)	% of total Hants area	2016/17 Total area (ha)	Change in area (ha)
Arable, orchards and hedgerows																			
Arable Field Margins	Incomplete. Figures only show SINC's on arable land designated for rare arable plant assemblages.	[26.3]					[7.2]	[22.5]	[0.8]					[23.5]	[0.9]	[81.2]	[0.1]	[50.7]	[30.5]
Hedgerows	No comprehensive information for Priority hedgerows. All hedgerows mapped as linear features (km)	[2,712]	[301]	[2,134]	[265]	[25]	[919]	[200]	[2,104]	[1,922]	[66]	[11]	[12]	[2,741]	[3,036]	[16,448]	n/a	[16,448]	0
Traditional Orchards	Work to be undertaken to verify areas identified by PTES under contract to NE.		0.3		0.1									0.4		1.0	0.0	0	1
Open waters																			
Eutrophic Standing Waters	No comprehensive information yet available.	0.1	0.1			1.9			34.5			0.4	0.4	8.7		45.0	0.0	45	0
Rivers	Incomplete data. Approx. figures for Chalk Rivers only, calculated from EA's River GIS layer in km.	[101]	[24]	[25]	[11]	[0]	[63]	[0]	[76]	[15]	[0]	[0]	[19]	[182]	[118]	[634]	n/a	[634]	0

Priority Habitat	Comments on Status	BDBC	EBC	EHDC	FBC	GBC	HDC	HvBC	NFDC	NFNPA	PCC	RBC	SCC	TVBC	WCC	Total Area (ha)	% of total Hants area	2016/17 Total area (ha)	Change in area (ha)
Wetlands																			
Coastal and Floodplain Grazing Marsh	Work ongoing to verify all qualifying grazing marsh. Some overlap with Lowland Meadows and with Purple Moor Grass and Rush Pastures.	812	323	696	343	58	856	170	1,511	1,398	83	31	19	1,925	1,206	9,431	2.4	9,455	-24
Lowland Fens	Comprehensive.	3		18		0	12		9	1,849				3	5	1,899	0.5	1,899	0
Reedbeds	Not comprehensive.	2.0	9.3		49.3	14.0	0.6	1.9	41.0	57.0	21.0	0.1	3.9	45.2	7.2	252.0	0.1	276	-24
Coastal																			
Coastal saltmarsh	EA data partly verified.		29		30	28		210	158	377	58		2	2	2	896	0.2	869	27
Coastal Sand Dunes	Comprehensive		0.1		0.0	0.4		39.7	2.1	5.3	0.3		0.2			47.0	0.0	47	0
Coastal Vegetated Shingle	Comprehensive.		3.4		11.9	62.6		46.8	20.5	49.1	21.8		2.7			219.0	0.1	223	-4
Intertidal mudflats	EA data partly verified.		136		270	111		1,380	408	854	1,124		129		6	4,418	1.1	4,418	0
Maritime Cliff and Slopes	Comprehensive.				1.4			0.8	37.5	2.9						43.0	0.0	43	0
Saline lagoons	Comprehensive.				1.2	9.1		4.5	3.3	32.5	3.6		0.0			54.0	0.0	55	-1
Marine																			
Seagrass beds	Not Comprehensive. Separate HWT data available.							45.6			3.3					49.0	0.0	49	0
Total		8,639	1,249	7,904	1,288	423	4,507	2,200	5,030	30,605	1,416	517	586	9,269	8,310	81,941	21.0	81,736	205

Sharing information about Hampshire's wildlife

The Hampshire Biodiversity Information Centre Partnership includes local authorities, government agencies, wildlife charities and biological recording groups.

Summary

Some of the more significant gains and losses in Priority habitat (PH) can be explained as follows:

- A 'gain' of over 200ha Lowland Mixed Deciduous Woodland PH in WCC is due to a re-interpretation of the woodland habitat following a period of thinning of plantation at Black Wood
- Loss of Lowland Meadow PH in WCC due to new surveys of meadows at Swanmore and Whiteley – re-interpretation of data following changes in management
- Gain of Purple Moor Grass/Rush Pasture fen meadow from re-interpretation of new surveys in Botley Wood
- Loss of vegetated Shingle PH at Eastney, Portsmouth – due to dynamics of the habitat and re-interpretation following new survey
- Loss of Reedbed and gain in Saltmarsh due to re-interpretation of new survey at Tom Tiddlers, NFNPA.
- An increase in the arable field margins priority habitat is down to a more comprehensive review of all SINC's supporting rare arable plants. The final amount has not been captured in the total sums in Table 1 or Table 3 as the model had already been run but will be done next year. The actual amounts are fairly insignificant against the totals (less than 1%).

Notes:

1. The extent of Priority habitat remains at 21% of the total area of Hampshire and the New Forest National Park area.
2. The Combined total area of Hampshire (to LWM) & NF National Park is 388,467 ha.
3. The Hampshire and LPA totals of Priority habitat are the sum of the individual Priority habitat types (excluding Arable Field Margins, Hedgerows and Rivers). This is not the total area of land covered by Priority habitat within Hampshire and each LPA because some Priority habitat types overlap and hence are double counted (e.g. Floodplain Grazing Marsh may overlap Lowland Meadows or Purple Moor Grass and Rush Pastures).
4. Salt-marsh and inter-tidal mudflat figures should be added together for the time being.
5. Very minor changes in area might not always reflect real change because of the rounding of figures.
6. The rounding of figures may also not reflect the more detailed figures given in the District accounts.

Sharing information about Hampshire's wildlife

The Hampshire Biodiversity Information Centre Partnership includes local authorities, government agencies, wildlife charities and biological recording groups.

3 Nature Conservation Designations

Table 2: Extent of Nature Conservation Designations in Hampshire (as at 31st March 2018)

Designation	BDBC (ha)	EBC (ha)	EHDC (ha)	FBC (ha)	GBC (ha)	HDC (ha)	HvBC (ha)	NFDC (ha)	NFNPA (ha)	PCC (ha)	RBC (ha)	SCC (ha)	TVBC (ha)	WCC (ha)	Total area (ha)	% of Hants	2016/17 Total area (ha)	Change in area (ha)
LNR	245	232	338	418	40	76	218	32	416	118	2	30	102	103	2,370	0.61	2,370	0
NNR	23		358	120		31		339	1,198					103	2,172	0.56	2,173	-1
RAMSAR		184		540	165		2,430	1,629	30,149	1,707		111	52	23	36,990	9.52	36,993	-3
SAC		296	1,540	195	4		2,269	614	30,641	542		20	788	182	37,091	9.55	37,091	0
SPA		184	1,757	526	161	2,098	2,430	1,625	30,119	1,707	451	111	599	23	41,791	10.76	41,797	-6
SSSI	806	427	2,710	563	265	2,695	2,676	2,571	32,187	1,787	472	216	1,868	1,313	50,556	13.01	50,559	-3
Stat Sites Combined	861	632	2,817	749	277	2,723	2,717	2,524	32,281	1,788	474	233	1,928	1,367	51,371	13.22	51,346	25
SINC	6,224	819	6,168	610	369	2,031	882	2,452	3,041	342	473	423	5,582	6,758	36,174	9.22	36,082	92

Notes:

1. A total of 27 new SINC's were approved by the SINC panel during 2017/18. 4 SINC's were deleted. The net increase in overall SINC area was 92.12ha
2. The figures do not include the marine pSPA "Solent and Dorset Coast" as it includes mainly open water habitat.
3. The statutory sites data was downloaded from Natural England on 5th April, so the data has been considered to be as at 31st March 2018.
4. The area totals for 'Statutory sites combined' do not equal the total for each of the individual statutory site designations for each district because there is often an overlap between statutory designations.

4 Priority habitats within Designated Sites

Table 3: Extent of Priority habitats within Designated Sites in Hampshire (as at 31st March 2018)

Designated Sites	BDBC (ha)	EBC (ha)	EHDC (ha)	FBC (ha)	GBC (ha)	HDC (ha)	HvBC (ha)	NFDC (ha)	NFNPA (ha)	PCC (ha)	RBC (ha)	SCC (ha)	TVBC (ha)	WCC (ha)	Total area (ha)	% of total Priority Habitat	2016/17 Total area (ha)	Change area (ha)
Priority habitat within Statutory sites combined	644	434	1,502	590	225	1,205	1,784	1,995	25,718	1,308	154	246	1,414	975	38,194	46.61	38,166	28
Priority habitat within SINC	4,263	507	3,304	405	147	1,321	306	1,612	1,826	172	183	255	3,660	3,736	21,697	26.48	21,408	289
Total combined	4,871	902	4,749	910	363	2,486	2,083	3,429	27,533	1,367	334	489	4,916	4,663	59,095	72.12	58,791	304
% of total Priority Habitat covered by all designations	56	72	60	71	86	55	95	68	90	97	65	83	53	56				

Notes:

1. The total area of Habitat in Hampshire (to LWM) & NF National Park = 81,941 ha.
2. The area totals for 'Total combined' designated sites do not equal the sum of the 'statutory sites combined' and 'SINC' figures for each district and the total for Hampshire because there is some overlap between statutory designated sites and SINC.
3. The 304ha increase in priority habitat designated as SINC, SSSI, SPA, SAC etc. has made little impact to the overall percentages for most districts as 270ha of the 304 ha increase occurred with WCC which saw an increase of 2% from 54% in 2016/17. Increases within SSSIs is down to reinterpretation of vegetation classification from new surveys rather than any increase in SSSIs designated.

5 Condition of Sites of Special Scientific Interest (SSSIs)

Table 4: Condition of Sites of Special Scientific Interest (SSSIs) in Hampshire (as at 31st March 2018)

District	Favourable		Unfavourable Recovering		Unfavourable No Change		Unfavourable Declining		Part Destroyed		Destroyed		Grand Total
	Area (ha)	Area (%)	Area (ha)	Area (%)	Area (ha)	Area (%)	Area (ha)	Area (%)	Area (ha)	Area (%)	Area (ha)	Area (%)	Area (ha)
Basingstoke & Deane	489	60.63%	284	35.2%	31	3.82%	3	0.36%					807
Eastleigh	106	24.77%	183	42.77%	106	24.82%	32	7.41%			1	0.22%	428
East Hampshire	1,084	40%	1,620	59.76%	3	0.12%	3	0.12%					2,710
Fareham	107	18.98%	187	33.18%	264	47%	5	0.84%					563
Gosport District	32	12.15%	171	64.53%	55	20.91%	2	0.74%			4	1.68%	264
Hart	326	12.08%	2,231	82.79%	8	0.29%	124	4.6%	6	0.24%			2,695
Havant	36	1.34%	2,566	95.88%	74	2.77%							2,676
New Forest District	1,158	45.04%	1,320	51.35%	74	2.87%	19	0.73%					2,571
New Forest NP	17,018	52.87%	13,906	43.2%	875	2.72%	386	1.2%			2	0.01%	32,187
Portsmouth		0%	1,528	85.52%	257	14.38%					2	0.1%	1,787
Rushmoor	72	15.34%	393	83.38%			6	1.28%					471
Southampton	9	4.12%	102	47.3%	105	48.58%							216
Test Valley	452	24.2%	1,208	64.65%	191	10.21%	18	0.94%					1,869
Winchester	384	29.27%	663	50.48%	182	13.85%	76	5.81%			8	0.59%	1,313
Grand Total	21,273	42.1%	26,362	52.1%	2,225	4.4%	674	1.3%	6	0%	17	0%	50,557

Summary:

1. The total amount of SSSI in Hampshire in 'Favourable' or 'Unfavourable Recovering' condition now lies at 94.2%, a decrease of 1.8% from 2016-17.
2. The total amount of SSSI in each District may differ from Natural England figures because NE do not always assign separate portions of SSSIs to the correct District; where the majority of a SSSI occurs within another District (and hence is assigned to that District) HBIC will clip the SSSI management units exactly to the District boundaries.
3. There are minor discrepancies in totals for LPA area compared to the LPA detailed tables because of different rounding levels.

Sharing information about Hampshire's wildlife

The Hampshire Biodiversity Information Centre Partnership includes local authorities, government agencies, wildlife charities and biological recording groups.

Table 5: Percentages for SSSIs in Favourable and Unfavourable Recovering condition in Hampshire (as at 31st March 2018)

District	%SSSI in 'Favourable' and 'Unfavourable Recovering' condition		
	2016/17	2017/18	Change
Basingstoke & Deane	95.62%	95.83%	0.21%
Eastleigh	92.89%	67.55%	-25.34%
East Hampshire	99.75%	99.75%	0%
Fareham	99.16%	52.16%	-47.00%
Gosport District	96.79%	76.68%	-20.11%
Hart	94.88%	94.88%	0%
Havant	100%	97.23%	-2.77%
New Forest District	96.39%	96.39%	0%
New Forest NP	96.1%	96.08%	-0.02%
Portsmouth	99.89%	85.52%	-14.37%
Rushmoor	98.72%	98.72%	0%
Southampton	98.57%	51.42%	-47.15%
Test Valley	88.85%	88.86%	0.01%
Winchester	79.74%	79.75%	0.01%
Total	95.93%	94.22%	-1.71%

Summary:

1. There were significant losses in the extent of 'Favourable' or 'Unfavourable Recovering' SSSI units in the coastal districts of Eastleigh, Fareham, Gosport, Portsmouth and Southampton. This appears to be largely due to recent re-assessments of many coastal mudflat units which are now classed as “unfavourable no change” due to ongoing eutrophication and growth of dense macroalgae mats
2. Winchester is also still showing a lowish % of SSSIs in favourable/unfavourable recovering condition due to ongoing issues with the River Itchen SSSI.

6 SINC changes observed and recorded

Table 6: Extent of changes observed and recorded between 1st April 2017 and 31st March 2018

District	SINC (31/03/2017)		SINC (31/03/2018)		New SINC		Amended SINC		Deleted SINC		Net change		
	Number	Area (ha)	Number	Area (ha)	Number	Area (ha)	Number	Area (ha)	Number	Area (ha)	Number	Area (ha)	% change in area
BDBC	800	6,201.01	806	6,223.85	6	23.44	1	-0.60			6	22.84	0.37
EBC	148	819.11	148	819.11							0	0.00	0.00
EHDC	575	6,165.55	574	6,168.19	1	5.84	5	-0.53	2	-2.67	-1	2.64	0.04
FBC	110	610.24	110	610.24							0	0.00	0.00
GBC	37	368.36	37	369.26			1	0.90			0	0.90	0.24
HDC	281	2,003.51	287	2,030.88	7	27.80	6	4.63	1	-5.06	6	27.37	1.37
HvBC	144	881.75	145	881.97	1	0.22					1	0.22	0.02
NFDC	226	2,446.43	229	2,451.76	3	5.33					3	5.33	0.22
NFNPA	389	3,044.22	391	3,040.53	2	4.63	6	-8.32			2	-3.69	-0.12
PCC	27	341.66	27	341.66							0	0.00	0.00
RBC	40	458.61	41	472.73	1	11.68	2	2.44			1	14.12	3.08
SCC	49	423.22	49	423.22			1	0.00			0	0.00	0.00
TVBC	579	5,574.90	582	5,581.82	3	7.67	1	-0.75			3	6.92	0.12
WCC	689	6,743.02	691	6,758.49	3	17.30	2	0.33	1	-2.16	2	15.47	0.23
Total	4094	36,081.60	4117	36,173.72	27	103.91	25	-1.90	4	-9.89	23	92.12	5.58

Summary:

1. There were 27 new SINC approved by the SINC panel during 2017-18 resulting in an extra 104ha designated
2. There were 4 SINC approved for deletion by the SINC panel during 2017-18 with a loss of nearly 10 ha
3. See individual District tables for details of new and deleted SINC and major amendments to SINC.

Sharing information about Hampshire's wildlife

The Hampshire Biodiversity Information Centre Partnership includes local authorities, government agencies, wildlife charities and biological recording groups.

7. SINC in Positive Management (SD 160) - No longer reported

Sharing information about Hampshire's wildlife

The Hampshire Biodiversity Information Centre Partnership includes local authorities, government agencies, wildlife charities and biological recording groups.

8 Changes in Notable Species Status over the period 2008-2018

Background

Part of this Monitoring report is to present data on the population and distribution trends for a representative sample of 50 of Hampshire's notable species over a rolling ten-year period, to be revisited every 5 years.

The original core output indicator as requested in government guidance on local authority performance was to measure change in status of species as a result of impact from planning and development. This is not an obtainable figure as the majority of change is due to on-going and cumulative impacts of agricultural practice, climate change, urbanisation, and disturbance from recreation etc. Data will simply be presented as a change in population and distribution with anecdotal statements to explain any change.

Selection of Species

An agreed list of 50 notable species was drawn following consultation in 2006 with the statutory agencies, local authorities and species recording groups in Hampshire. The 50 species are listed in the tables below and cover a range of taxonomic groups; are representative of the various habitat types present in Hampshire; cover both rural and urban areas; and are relevant to most local authorities.

Of the 50 species, 30 are UK Priority species and are listed on S41 of the NERC Act 2006, the remainder are on the Hampshire Biodiversity Action Plan list. Rarer species were excluded on the basis they have such a restricted distribution that their relevance to the reporting process would be fairly limited. The bias towards vascular plants, birds and Lepidoptera reflects the large data-sets that already exist for these groups and the ongoing programme of data acquisition. These groups are also sensitive indicators of environmental change and are being used by Government agencies and various NGOs for their reporting purposes.

Criteria for Selection

The criterion for selection of species was as follows:

1. Individual species must be on the Hampshire Notables list.
2. They should be representative of a wide range of taxonomic groups.
3. They should be representative of a wide range of UK Priority habitats in Hampshire.
4. Species chosen should have a reasonable distribution (i.e. not just one or two sites)
5. A significant proportion of the species chosen should be found in each District.
6. Species chosen should be sensitive to change (planning, agriculture, climate etc.)
7. Species selected are primarily those for which good data exists, obtained either annually, or through periodic (e.g. 3 year/ 5 year) survey programmes
8. A good number of the selected species are flagship species with wide public interest.

Change in population status

For consistency, the categories used to report on population status have not changed over the past 11 years and match those categories previously used by Defra for national reporting:

- Increasing
- Stable
- Declining* (slowing)
- Declining** (continuing/accelerating)
- Decline? (possibly stabilising?)
- Fluctuating/ no clear trend
- Lost
- Unknown/insufficient data

In 2006 the Hampshire Biodiversity Information Centre (HBIC) compiled a baseline set of statistics for the previous ten-year period (1995-2005) for the 50 species consultation with the species recording groups in Hampshire,

Up until 2012 HBIC has reported annually on the changes observed over the previous rolling 10-year period. However, since 2013 it was decided to report back every 5 years on the basis that it was too difficult to pick out long term trends in population numbers against short term impacts such as extra cold winters, very wet spring etc. particularly for some of the more under-recorded species. Plus, many major surveys for particular species are often repeated in a comprehensive manner on a 5-year intervals rather than every year.

For the year to 31st March 2018 any change in status in the 50 species is reported for the 2007-2017 period and summarised in Table 8 (penultimate column). From this table the percentage of species in each of the categories is calculated and shown as pie charts in section 8.3.

NB Those trends shown in [] brackets are where HBIC have made a judgment based on available data, national trends and previous judgments.

Change in Distribution by District

See Table 9. A new analysis has been done of all 2008-2018 records by District.

The species count for most districts/Unitaries have remained stable, although most species at low or declining populations. Basingstoke and Deane lost one species (*Pulicaria vulgaris* – an erroneous BioBlitz record) and Portsmouth gained a species (Brown Hare on Portsdown Hill in 2017).

8.1 Population Trends of the 50 Hampshire Notable Species

Table 8 : Population Trends of Hampshire Notable Species (N = 50) from 2008 to 2018

† UK Priority Species (S41 NERC Act)

Scientific name	Common name	Group	HBAP (Vol.2) 2000	Trend 1995-2005 (assessed 2006)	Trend 2000-2010 (assessed 2011)	Trend 2002-2012 (assessed 2013)	Trend 2007-2017 (ass. Oct 2017)	Trend 2008-2018 as for 2007-2017
<i>Triturus cristatus</i> †	great crested newt	Amphibian	Decline	Decline	Decline**	Decline**	Decline**	Decline** ¹
<i>Bombus humilis</i> †	brown-band. carder bee	Bee	Decline	Unknown	[Increase]	[Increase]	[Stable]	[Stable]
<i>Lucanus cervus</i> †	stag beetle	Beetle	Decline	Stable	[Stable]	[Stable]	[Stable]	[Stable] ²
<i>Alauda arvensis</i> †	skylark	Bird	Decline	Decline*	Stable	Decline	Decline	Decline
<i>Branta b. bernicla</i> †	dark-bellied Brent goose	Bird	Stable	Decline*	Decline	Stable	Stable	Stable
<i>Caprimulgus europ.</i> †	nightjar	Bird	Stable	Increase	Stable	Stable	Stable	Stable
<i>Lullula arborea</i> †	woodlark	Bird	Increasing	Increase	Stable	Stable	Stable	Stable
<i>Luscinia megarhyn.</i>	nightingale	Bird	Decline	Decline?	Decline	Decline	Decline	Decline
<i>Miliaria calandra</i> †	corn bunting	Bird	Rapid Decline	Decline**	Decline	Decline	Decline	Decline
<i>Perdix perdix</i> †	grey partridge	Bird	Rapid Decline	Decline**	Decline	Decline	Decline	Decline
<i>Pyrrhula pyrrhula</i> †	bullfinch	Bird	Decline	Stable	Stable	Decline	Stable	Stable
<i>Streptopelia turtur</i> †	turtle dove	Bird	Rapid Decline	Decline**	Decline	Decline	Decline	Decline
<i>Sylvia undata</i>	Dartford warbler	Bird	Stable	Increase	Decline	Increase	Increase	Increase ³
<i>Tringa totanus</i>	redshank	Bird	Rapid Decline	Decline**	Decline	Decline	Decline	Decline
<i>Vanellus vanellus</i> †	lapwing	Bird	Rapid Decline	Stable	Decline	Decline	Decline	Decline
<i>Argynnis paphia</i>	silver-washed fritillary	Butterfly	Stable	Stable	Increase	[Increase}	Increase	Increase
<i>Cupido minimus</i> †	small blue	Butterfly	Rapid Decline	Decline*	Decline*	[Decline*]	Fluctuating	Fluctuating
<i>Hamearis lucina</i> †	Duke of Burgundy	Butterfly	Decline	Decline**	Decline*	[Decline*}	Decline**	Decline**

¹ The national status of Great Crested Newt is still thought to be **Decline (continuing)** and that this applies on a county level.

² <http://www.iucnredlist.org/details/157554/3>

³ Dartford Warbler was shown as declining because of the 95% reduction in its population in the Thames Basin and Wealden Heaths as a result of the recent cold winters. Prior to that it was increasing and is now showing a slow recovery from a low base in the North East of the county.

Sharing information about Hampshire's wildlife

The Hampshire Biodiversity Information Centre Partnership includes local authorities, government agencies, wildlife charities and biological recording groups.

Scientific name	Common name	Group	HBAP (Vol.2) 2000	Trend 1995-2005 (assessed 2006)	Trend 2000-2010 (assessed 2011)	Trend 2002-2012 (assessed 2013)	Trend 2007-2017 (ass. Oct 2017)	Trend 2008-2018 as for 2007-2017
<i>Hesperia comma</i>	silver-spotted skipper	Butterfly	Stable	Increase	Fluctuating	[Stable}	Decline	Decline⁴
<i>Lysandra coridon</i>	chalkhill blue	Butterfly	Decline	Fluctuating	Fluctuating	{Stable}	Fluctuating	Fluctuating
<i>Plebejus argus</i> †	silver-studded blue	Butterfly	Decline	Stable	Stable	[Stable}	Stable	Stable⁵
<i>Gammarus insensibilis</i> †	lagoon sand shrimp	Crustacean	Decline	Unknown	Unknown	[Unknown}	[Stable]	[Stable⁶]
<i>Coenagrion mercuriale</i> †	southern damselfly	Dragonfly	Stable	Stable	Stable	[Stable]	Declining	Declining⁷
<i>Asilus crabroniformis</i> †	hornet robberfly	Fly	Decline	Stable	[Stable]	[Stable]	[Stable]	[Stable]
<i>Carex divisa</i> †	divided sedge	Flw Plant	Stable	Stable	[Stable]	Stable	Decline**	Decline**
<i>Chamaemelum nobile</i> †	chamomile	Flw Plant	Decline	Stable	[Stable]	Stable	Decline*	Decline⁸*
<i>Epipactis phyllanthes</i>	green fl.helleborine	Flw Plant	Decline	Stable	[Decline?]	Decline	Decline**	Decline**
<i>Gentiana pneumon.</i>	marsh gentian	Flw Plant	Decline	Stable	[Unknown]	Fluctuating	Fluctuating	Fluctuating
<i>Juniperus communis</i> †	juniper	Flw Plant	Decline	Decline*	[Decline]	Decline	Decline**	Decline**
<i>Lithospermum arvense</i>	corn gromwell	Flw Plant	Rapid Decline	Decline*	[Decline]	Decline	Decline*	Decline*
<i>Orchis morio</i>	green-winged orchid	Flw Plant	Rapid Decline	Decline*	[Decline]	Decline	Decline*	Decline*
<i>Pulicaria vulgaris</i> †	small fleabane	Flw Plant	Stable	Stable	[Decline]	Fluctuating	Fluctuating	Fluctuating⁹
<i>Pulmonaria longifolia</i>	narrow leaved lungwort	Flw Plant	Decline	Stable	[Decline]	Decline	Decline**	Decline**
<i>Oenanthe fluviatilis</i>	river water-dropwort	Flw Plant	Rapid Decline	Stable	[Decline]	Decline*	Decline*	Decline*
<i>Thesium humifusum</i>	bastard toadflax	Flw Plant	Decline	Stable	[Stable]	Stable	Decline**	Decline**

⁴ Following range expansion and recolonisation of several new sites in the late 1990s, the Silver-spotted Skipper has had mixed fortunes over recent years. Warm, wet summers and a decline in rabbit pressure at several key sites resulted in increased turf heights in late summer leading to sub-optimal conditions for this short-turf specialist.

⁵ Whilst the overall situation for Silver-studded Blue appears stable, there are growing concerns that overgrazing in parts of the New Forest (particularly round the edges) is causing a decline in numbers and local population loss in smaller habitat patches.

⁶ Trends were previously based on a 1997 survey of the Hampshire saline lagoons. A Natural England funded survey of all lagoons in 2013 recorded its presence in saline lagoons at Farlington Marshes (new) and Gilkicker Lagoon, with multiple records within the lagoons at Pennington Marshes. The data was obtained from the NBN Atlas.

⁷ UK picture http://jncc.defra.gov.uk/pdf/Article17Consult_20131010/S1044_UK.pdf

⁸ Decline is marked outside the New Forest, where populations are probably stable.

⁹ Now extinct in VC12 North Hampshire

Sharing information about Hampshire's wildlife

The Hampshire Biodiversity Information Centre Partnership includes local authorities, government agencies, wildlife charities and biological recording groups.

Scientific name	Common name	Group	HBAP (Vol.2) 2000	Trend 1995-2005 (assessed 2006)	Trend 2000-2010 (assessed 2011)	Trend 2002-2012 (assessed 2013)	Trend 2007-2017 (ass. Oct 2017)	Trend 2008-2018 as for 2007-2017
<i>Zostera marina</i>	eelgrass	Flw Plant	Decline	Unknown	Stable	[Stable]	Stable	Stable ¹⁰
<i>Poronia punctata †</i>	nail fungus	Fungi	Stable	Stable	Stable	Stable	Declining	Declining ¹¹
<i>Gomphocerippus rufus</i>	rufous grasshopper	Grasshoppe	Stable	Unknown	[Unknown]	[Unknown]	[Stable]	[Stable]
<i>Arvicola terrestris †</i>	water vole	Mammal	Rapid Decline	Stable	Stable	[Stable]	Stable	Stable ¹²
<i>Eptesicus serotinus</i>	Serotine bat	Mammal	Stable	Decline**	[Decline]	Stable	Decline?	Decline? ¹³
<i>Lepus europaeus †</i>	brown hare	Mammal	Decline	Stable	Stable	[Stable]	Stable	Stable
<i>Muscardinus avellan †</i>	dormouse	Mammal	Decline	Stable	Stable	[Stable]	Decline*	Decline* ¹⁴
<i>Vertigo moulinsiana †</i>	Desmoulin's whorl snail	Molluscs	Stable?	Stable	Stable	Stable	[Stable]	[Stable]
<i>Apoda limacodes</i>	festoon	Moth	Decline	Increase	[stable]	Stable	Increase	Increase
<i>Catocala promissa †</i>	light crimson underwing	Moth	Stable	Stable	[Stable]	Stable	Stable	Stable
<i>Hemaris fuciformis</i>	broad-bord. bee hawk	Moth	Decline	Stable	[Stable]	Fluctuating	Fluctuating	Fluctuating
<i>Hypena rostralis</i>	buttoned snout	Moth	Decline	Increase	[Stable]	Stable	Increase	Increase
<i>Minoa murinata †</i>	drab looper	Moth	Decline	Stable	[Stable]	Stable	Decline	Decline
<i>Shargacucullia lychnitis †</i>	striped lychnis	Moth	Stable	Stable	[Stable]	Stable	Stable	Stable
<i>Coronella austriaca †</i>	smooth snake	Reptile	Decline	Stable	Unknown	Unknown	Unknown	Unknown ¹⁵

10 Repeat surveys on selected eelgrass beds carried out by HIWWT and the EA suggest these beds are stable. However, there are thought to be local declines in some areas as a result of physical disturbance from fishing activity, which has been highlighted by the Defra European Marine Sites Risk Review for the Solent EMS.

¹¹ UK picture http://iucn.ekoo.se/iucn/species_view/198420/

¹² Water voles in Hampshire may be considered to be showing a slight trend upward, coupled with several recent and successful reintroduction programmes.

¹³ HBG are aware of fewer maternity roosts in Hampshire. However, while recorder effort is increasing, is still too low to indicate any clear trends. National Bat Monitoring Programme records trends from 1999 to 2016 show the maternity roost count figure is a decline of 1.3% (a decline of 19.9% over the whole period).

¹⁴ Although many new records have come to light during the last ten years, several of the continuing monitoring programmes have shown a marked decrease in activity and presence, not only in Hampshire but also the neighbouring counties.

¹⁵ The New Forest Smooth Snake Survey Group has been running a surveillance project since 2015 to assist with regional conservation status

Sharing information about Hampshire's wildlife

The Hampshire Biodiversity Information Centre Partnership includes local authorities, government agencies, wildlife charities and biological recording groups.

8.2 Distribution of the 50 Hampshire Notable Species

Table 9 : Distribution of Hampshire Species (N=50) from 2008 to 2018

ScientificName	CommonName	Group	Districts														
			B	EH	E	F	G	Ht	Hv	ND	NP	P	R	S	T	W	
<i>Triturus cristatus</i>	Great Crested Newt	Amphib	✓	✓	✓	✓	✓	✓	▪	✓	✓	✓	▪	✓	✓	✓	
<i>Bombus humilis</i> *	brown-band.carder bee	Bees	▪	▪	▪	✓	✓	▪	✓	▪	▪	✓	▪	✓	▪	✓	
<i>Lucanus cervus</i>	Stag Beetle	Beetles	✓	✓	✓	✓	✓	✓	✓	✓	✓	✓	✓	✓	✓	✓	
<i>Alauda arvensis</i>	Skylark	Birds	✓	✓	✓	✓	✓	✓	✓	✓	✓	✓	✓	✓	✓	✓	
<i>Branta bernicla bernicla</i>	Dark-bellied Brent Goose	Birds	▪	✓	✓	✓	✓	▪	✓	✓	✓	✓	▪	✓	✓	✓	
<i>Caprimulgus europ.</i>	Nightjar	Birds	✓	✓	✓	✓	✓	✓	✓	✓	✓	✓	✓	✓	✓	✓	
<i>Lullula arborea</i>	Woodlark	Birds	✓	✓	✓	✓	✓	✓	✓	✓	✓	✓	✓	✓	✓	✓	
<i>Luscinia megarhynchos</i>	Nightingale	Birds	✓	✓	✓	✓	✓	✓	✓	✓	✓	✓	✓	✓	✓	✓	
<i>Emberiza calandra</i>	Corn Bunting	Birds	✓	✓	▪	✓	▪	✓	✓	✓	✓	✓	▪	▪	✓	✓	
<i>Perdix perdix</i>	Grey Partridge	Birds	✓	✓	✓	✓	▪	✓	✓	✓	✓	✓	▪	✓	✓	✓	
<i>Pyrrhula pyrrhula</i>	Bullfinch	Birds	✓	✓	✓	✓	✓	✓	✓	✓	✓	✓	✓	✓	✓	✓	
<i>Streptopelia turtur</i>	Turtle Dove	Birds	✓	✓	✓	✓	✓	✓	✓	✓	✓	✓	✓	✓	✓	✓	
<i>Sylvia undata</i>	Dartford Warbler	Birds	✓	✓	✓	✓	✓	✓	✓	✓	✓	✓	✓	✓	✓	✓	
<i>Tringa totanus</i>	Redshank	Birds	✓	✓	✓	✓	✓	✓	✓	✓	✓	✓	▪	✓	✓	✓	
<i>Vanellus vanellus</i>	Lapwing	Birds	✓	✓	✓	✓	✓	✓	✓	✓	✓	✓	✓	✓	✓	✓	
<i>Argynnis paphia</i>	Silver-washed Fritillary	Butterflies	✓	✓	✓	✓	✓	✓	✓	✓	✓	✓	✓	✓	✓	✓	
<i>Cupido minimus</i>	Small Blue	Butterflies	✓	✓	✓	✓	✓	▪	✓	✓	✓	✓	▪	▪	✓	✓	
<i>Hamearis lucina</i>	Duke of Burgundy	Butterflies	✓	✓	▪	▪	▪	▪	▪	✓	✓	▪	▪	▪	✓	✓	
<i>Hesperia comma</i>	Silver-spotted Skipper	Butterflies	▪	✓	▪	▪	▪	▪	▪	✓	▪	✓	▪	▪	✓	✓	
<i>Lysandra coridon</i>	Chalk Hill Blue	Butterflies	✓	✓	✓	✓	✓	✓	✓	✓	✓	✓	✓	✓	✓	✓	
<i>Plebejus argus</i>	Silver-studded Blue	Butterflies	✓	✓	✓	✓	▪	✓	▪	✓	✓	✓	✓	▪	▪	✓	
<i>Gammarus insensibilis</i> *	lagoon sand shrimp	Crustacea	▪	▪	▪	▪	✓	▪	▪	▪	✓	✓	▪	▪	▪	▪	
<i>Coenagrion mercuriale</i>	Southern Damselfly	Dragonflies	▪	▪	✓	▪	▪	▪	▪	✓	✓	▪	▪	▪	✓	✓	
<i>Asilus crabroniformis</i> *	Hornet Robberfly	Flies	▪	✓	▪	▪	▪	▪	▪	✓	✓	✓	▪	▪	✓	✓	
<i>Carex divisa</i>	Divided Sedge	Flw Plants	▪	✓	▪	✓	✓	▪	✓	✓	✓	✓	▪	✓	▪	▪	
<i>Chamaemelum nobile</i>	Chamomile	Flw Plants	▪	✓	▪	▪	✓	✓	✓	✓	✓	✓	✓	▪	✓	✓	
<i>Epipactis phyllanthes</i>	Green-flowered Helleborine	Flw Plants	✓	✓	✓	▪	▪	✓	▪	✓	▪	▪	✓	✓	✓	✓	
<i>Gentiana pneumon.</i>	Marsh Gentian	Flw Plants	▪	▪	▪	▪	▪	✓	▪	▪	✓	▪	▪	▪	✓	▪	

			B	EH	E	F	G	Ht	Hv	ND	NP	P	R	S	T	W
<i>Juniperus communis</i>	Juniper	Flw Plants	✓	✓	▪	✓	▪	▪	▪	✓	✓	✓	▪	▪	✓	✓
<i>Lithospermum arvense</i>	Field Gromwell	Flw Plants	✓	✓	▪	▪	▪	▪	▪	✓	▪	▪	▪	▪	✓	✓
<i>Oenanthe fluviatilis</i>	River Water-dropwort	Flw Plants	▪	▪	✓	▪	▪	▪	▪	▪	✓	▪	▪	✓	✓	✓
<i>Orchis morio</i>	Green-winged Orchid	Flw Plants	✓	✓	✓	▪	✓	▪	✓	✓	✓	▪	✓	✓	✓	✓
<i>Pulicaria vulgaris</i>	Small Fleabane	Flw Plants	✗	▪	▪	▪	▪	▪	▪	✓	✓	▪	▪	▪	▪	▪
<i>Pulmonaria longifolia</i>	Narrow-leaved Lungwort	Flw Plants	▪	▪	▪	▪	▪	▪	▪	✓	✓	▪	▪	▪	▪	▪
<i>Thesium humifusum</i>	Bastard-toadflax	Flw Plants	▪	▪	▪	✓	▪	▪	✓	✓	▪	✓	▪	▪	✓	✓
<i>Zostera marina/noltii</i>	Eelgrass	Flw Plants	▪	▪	▪	✓	✓	▪	✓	▪	✓	✓	▪	▪	▪	▪
<i>Poronia punctata</i>	Nail Fungus	Fungi	▪	▪	▪	▪	▪	▪	▪	▪	✓	▪	▪	▪	▪	▪
<i>Gomphocerippus rufus</i>	Rufous grasshopper	Grasshoppers	▪	✓	▪	▪	▪	▪	▪	▪	▪	▪	▪	▪	▪	✓
<i>Arvicola terrestris</i>	European Water Vole	Mammals	✓	▪	✓	✓	✓	✓	✓	✓	✓	✓	▪	✓	✓	✓
<i>Eptesicus serotinus</i>	Serotine	Mammals	✓	✓	✓	✓	▪	✓	✓	✓	✓	▪	✓	✓	✓	✓
<i>Lepus europaeus</i>	Brown Hare	Mammals	✓	✓	✓	▪	▪	✓	▪	✓	✓	✓	▪	▪	✓	✓
<i>Muscardinus avellan.</i>	Hazel Dormouse	Mammals	✓	✓	✓	✓	▪	✓	✓	✓	▪	▪	▪	✓	✓	✓
<i>Vertigo moulinsiana</i>	Desmoulin's whorl snail	Molluscs	▪	▪	▪	▪	▪	▪	▪	✗	▪	▪	▪	▪	▪	▪
<i>Apoda limacodes</i>	Festoon	Moths	✓	✓	✓	✓	✓	✓	✓	✓	✓	✓	✓	✓	✓	✓
<i>Catocala promissa</i>	Light Crimson Underwing	Moths	▪	▪	✓	▪	▪	▪	▪	✓	✓	▪	▪	▪	✓	▪
<i>Hemaris fuciformis</i>	Broad-bord. Bee Hawk-moth	Moths	✓	✓	▪	▪	✓	✓	▪	✓	✓	▪	▪	▪	✓	✓
<i>Hypena rostralis</i>	Buttoned Snout	Moths	✓	✓	✓	✓	▪	✓	✓	✓	✓	✓	✓	✓	✓	✓
<i>Minoa murinata</i>	Drab Looper	Moths	✓	▪	▪	▪	▪	✓	▪	✓	▪	▪	▪	▪	✓	✓
<i>Shargacucullia lychnitis</i>	Striped Lychnis	Moths	✓	✓	▪	✓	▪	✓	✓	▪	▪	▪	▪	▪	✓	✓
<i>Coronella austriaca</i>	Smooth Snake	Reptiles	▪	✓	▪	▪	▪	✓	▪	✓	✓	▪	▪	▪	▪	▪
Total			31	36	28	29	24	29	28	41	40	31	18	25	39	40
Prev.total			32	36	28	29	24	29	28	41	40	30	18	25	39	40

1. '✓' means the species occurs in the District (2005-2015), from records held by HBIC and those received from the species groups. 'Occurs' means possible/confirmed breeding or regular sightings in the area. Irregular or transient records are discounted where possible or given '✓' where 3 or less records. '✓' means new record (or returning) and '✗' means no longer falls within reporting period (or an erroneous record in BDBC)
2. B = Basingstoke & Deane, EH = East Hampshire, E = Eastleigh, F = Fareham, G = Gosport, Ht = Hart, Hv = Havant, ND = New Forest District, NP = New Forest NPA, P = Portsmouth, R = Rushmoor, S = Southampton, T = Test Valley, W = Winchester
3. The data for the Lagoon sand shrimp was obtained from the NBN Atlas from a Natural England funded survey of all lagoons in 2013. It will be downloaded onto HBIC systems in due course

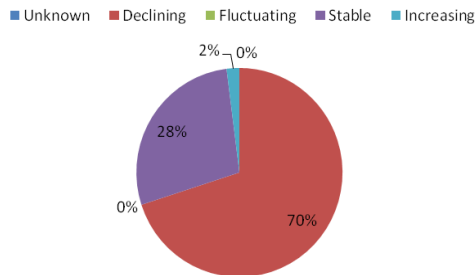
Sharing information about Hampshire's wildlife

The Hampshire Biodiversity Information Centre Partnership includes local authorities, government agencies, wildlife charities and biological recording groups.

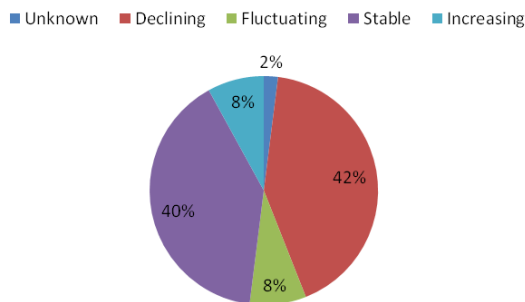
8.3 Summary of trends for the 50 Hampshire Notable Species – assessed in 2017 for the period 2007 – 2017.

To be next reviewed in 2022 for the 2012-2022 period

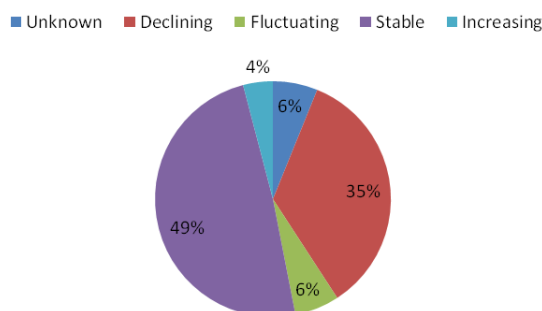
1. Assessed from Hampshire BAP 2000



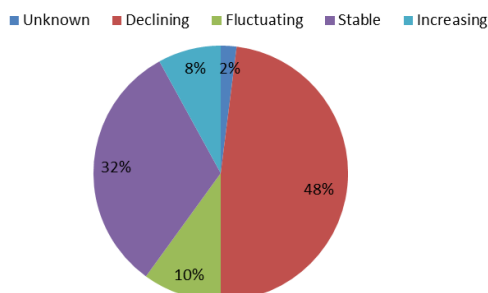
2. Assessed trends for 1995-2005



3. Assessed trends for 2002-2012



4. Assessed trends for 2007-2017



Summary

The last decade has seen rates of decline increase again for several of Hampshire’s notable species. There are also concerns that “Stable” for many species means stabilised at low (still vulnerable) levels, rather than stabilising at a higher more sustainable level.

Since the last report for 2002-2012 **the number of species showing a decline has increased from 35% to 48%**, whilst one species has remained in the ‘unknown’ category where there is uncertainty due it being the first year of a new survey

The next review will be undertaken in 2022 for the 2012-2022 period.

Sharing information about Hampshire's wildlife

The Hampshire Biodiversity Information Centre Partnership includes local authorities, government agencies, wildlife charities and biological recording groups.

09 Basingstoke and Deane Borough Council

09.1 Priority habitats

Table 09A: Extent of Priority habitats (as at 31st March 2018)

Priority Habitat	Comments on Status	Combined Hants area (ha)	% of Combined Hants area	BDBC area (ha)	% of BDBC area	2016/17 BDBC area (ha)	Change in area (ha)
Grasslands							
Lowland Calcareous Grassland	Comprehensive	2,060	0.53	222	0.35	222	0
Lowland Dry Acid Grassland	Comprehensive. Some overlap with Lowland Heath	3,678	0.95	24	0.04	24	0
Lowland Meadows	Comprehensive. Some overlap with Coastal and Floodplain Grazing Marsh and with Wood-Pasture and Parkland.	1,398	0.36	152	0.24	152	0
Purple Moor Grass and Rush Pastures	Comprehensive. Some overlap with Coastal and Floodplain Grazing Marsh.	1,487	0.38	34	0.05	34	0
Heathlands							
Lowland Heathland	Comprehensive. Some overlap with Lowland Dry Acid Grassland.	11,832	3.05	180	0.28	180	0
Woodland, wood-pasture and parkland							
Lowland Beech and Yew Woodland	Not comprehensive. On-going work to distinguish from Lowland Mixed Deciduous Woodland in old surveys.	280	0.07	8.6	0.01	9	0
Lowland Mixed Deciduous Woodland	Ongoing work as all ancient/ non-ancient woodland has been included yet not all has been surveyed for qualifying NVC types.	36,257	9.33	6,278	9.91	6,272	6
Wet Woodland	Fairly comprehensive. Areas will exist in LMDW that are not yet surveyed for qualifying types.	2,050	0.53	417	0.66	417	0
Wood-Pasture and Parkland	Not comprehensive. Further work needed to classify this habitat within historic parkland.	5,545	1.43	506	0.80	506	0

Priority Habitat	Comments on Status	Combined Hants area (ha)	% of Combined Hants area	BDBC area (ha)	% of BDBC area	2016/17 BDBC area (ha)	Change in area (ha)
Arable, orchards and hedgerows							
Arable Field Margins	Incomplete. Figures only show SINCs on arable land designated for rare arable plants.	[81.2]	[0.1]	[26.3]	[0.08]	[26.3]	[0]
Hedgerows	No comprehensive information for Priority hedgerows. All hedgerows mapped as linear features (km).	[16,448]	n/a	[2,712]	n/a	[2,712]	[0]
Traditional Orchards	Work to be undertaken to incorporate areas recently identified by PTES under contract to NE.	1	0.00				
Open waters							
Eutrophic Standing Waters	No comprehensive information yet available.	45	0.01	0.1	0.00	0	0
Rivers	Incomplete data. Approx. figures for Chalk Rivers only, calculated from EA's River GIS layer (km).	[634]	n/a	[101]	n/a	[101]	[0]
Wetlands							
Coastal and Floodplain Grazing Marsh	Work ongoing to verify all qualifying grazing marsh. Some overlap with Lowland Meadows and with Purple Moor Grass and Rush Pastures.	9,431	2.43	812	1.28	812	0
Lowland Fens	Comprehensive.	1,899	0.49	3	0.00	3	0
Reedbeds	Not comprehensive.	252	0.06	2.0	0.00	2	0
Total		81,941	21.09	8,639	13.63	8,633	6

Summary: Small increase in Priority habitat type as more lowland mixed deciduous woodland qualifies as a result of new surveys

Notes:

1. Coastal and Marine categories are not displayed (as they are not relevant for this district) but the combined total area for Hampshire includes these categories.
2. The Hampshire and district totals of Priority habitat are the sum of the individual Priority habitat types (excluding Arable Field Margins and Rivers). This is not the total area of land covered by Priority habitat within Hampshire and each district because some Priority habitat types overlap and hence are double counted (e.g. Coastal and Floodplain Grazing Marsh may overlap Lowland Meadows or Purple Moor Grass and Rush Pastures).
3. Because the total area of Priority habitat may include areas where habitats overlap, the % of the district area covered by Priority habitat may be slightly over-exaggerated.
4. Minor changes in area might not always reflect real change but are results of a rounding of figures.

09.2 Nature Conservation Designations

Table 09B: Extent of Nature Conservation Designations (as at 31st March 2018)

Designation	Combined Hants sites (no)	Combined Hants area (ha)	Combined Hants area (%)	BDBC sites (no)	BDBC area (ha)	BDBC area (%)	2016/17 BDBC area (ha)	Change (ha)
LNR	66	2,370	1	7	245	0.39	245	0
NNR	11	2,172	1	1	23	0.04	23	0
RAMSAR	6	36,990	10					
SAC	13	37,091	10					
SPA	10	41,791	11					
SSSI	131	50,556	13	20	806	1.27	806	0
Stat Sites Combined	237	51,372	13	28	861	1.36	861	0
SINC	4,117	36,174	9	806	6,224	9.82	6,201	23

Summary:

1. There were no changes to statutory sites during 2017/18.
2. For details of any new, amended and deleted SINC's see tables 09G, H & I.

Notes:

1. The areas total for 'Statutory sites combined' may not equal the total for each of the individual statutory site designations because there is often an overlap between statutory designations.

Table 09C: Statutory Designated Sites (as at 31st March 2018)

Designation	Site Name	Area (ha) within district
LNR	Chineham Woods	9.17
LNR	Daneshill Park Woods	4.44
LNR	Herbert Plantation	25.61
LNR	Pamber Forest	190.13
LNR	Popley Ponds	1.44
LNR	The Mill Field	11.68
LNR	Up Nately	2.83
NNR	Ashford Hill	23.39
SSSI	Ashford Hill Woods and Meadows	141.55
SSSI	Bere Mill Meadows	10.27
SSSI	Burghclere Beacon	80.67
SSSI	Butter Wood	45.21
SSSI	Duncroft Farm Pit	0.12
SSSI	East Aston Common	0.48
SSSI	Greenham and Crookham Commons	0.43
SSSI	Greywell Tunnel (Basingstoke Canal)	0.11
SSSI	Highclere Park	69.58
SSSI	Hook Common and Bartley Heath	6.49
SSSI	Ladle Hill	10.50
SSSI	Mapledurwell Fen	0.42
SSSI	Micheldever Spoil Heaps	26.73
SSSI	Old Burghclere Lime Quarry	4.51
SSSI	Pamber Forest and Silchester Common	341.72
SSSI	River Test	41.84
SSSI	Ron Ward's Meadow with Tadley Pastures	11.51
SSSI	Sidley Wood	11.72
SSSI	Stanford End Mill and River Loddon	1.82
SSSI	West Woodhay Down	0.50

09.3 Priority Habitats within Designated Sites

Table 09D: Extent of Priority habitats within Designated Sites (as at 31st March 2018)

Designated Sites	Combined Hants area (ha)	Combined Hants area (%)	BDBC (ha)	BDBC area (%)	2016/17 BDBC area (ha)	Change area (ha)
Statutory sites combined	38,194	46.6	644	7.5	645	-1
SINC	21,697	26.5	4,263	49.4	4,246	17
Total combined	59,095	72.1	4,871	56.4	4,855	16

Summary:

1. Approx. 56% of Priority habitat in Basingstoke & Deane lies within designated sites, a gain of 16ha on last year

Notes:

1. Total Priority habitat in Basingstoke & Deane as at 31st March 2018 = 8,639 ha.

09.4 Condition of Sites of Special Scientific Interest (SSSIs)

Table 09E: Conditions of Sites of Special Scientific Interest (SSSIs) (as at 31st March 2018)

Condition	Combined Hants area (ha)	Combined Hants area (%)	BDBC area (ha)	BDBC area (%)	2016/17 BDBC area (ha)	Change in area (ha)
Favourable	21,272.59	42.1	488.77	60.6	279.36	209.41
Unfavourable Recovering	26,361.33	52.1	283.75	35.2	491.71	-207.96
Unfavourable no Change	2,225.07	4.4	30.77	3.8	32.46	-1.69
Unfavourable Declining	673.19	1.3	2.87	0.4	2.87	0.00
Part Destroyed	6.34	0.0				
Destroyed	17.44	0.0				
Grand Total	50,555.95	100.0	806.16	100.0	806.39	-0.23

Notes:

1. Although data has been provided by Natural England the total amount of SSSI may differ slightly from NE figures because NE do not always assign an SSSI unit to the correct District where the majority of that SSSI occurs within another District, whereas HBIC are able to clip the SSSI management units directly to the District boundaries.
2. Any change in area is due to NE re-digitising boundaries. The number of SSSIs remains the same.
3. A significant area (over 200ha) has been re-classified from 'Unfavourable Recovering' to 'Favourable' in the Pamber Forest SSSI

09.5 SINC changes observed and recorded

Table 09F: Extent of changes to SINCS observed and recorded between 1st April 2017 and 31st March 2018

SINCS	Hants sites (no)	Hants sites (area)	BDBC sites (no)	BDBC sites (area)
Total sites (2016/17)	4,094	36,081.60	800	6,201.01
New Sites	27	103.91	6	23.44
Amended Sites	25	-1.90	1	-0.60
Deleted sites	4	-9.89		
Total sites (2017/18)	4,117	36,173.72	806	6,223.85
Net change	23	92.12	6	22.84
% change in area		5.58		0.37

Notes:

1. Data extracted from HBIC SINC layer between 1st April 2017 and 31st March 2018.
2. Incorporates the decisions from November 2017 panel.

Table 09G: New SINC approved between 1st April 2017 and 31st March 2018

Site Ref	Site Name	New Size (ha)	New Criteria	Panel date
BD0822	Long Break, Manydown	0.87	1A/6A	Nov 2017
BD0821	Green Lane South of Worting Wood	0.37	1A	Nov 2017
BD0819	U19 Ashe Warren	2.52	1A	Nov 2017
BD0818	Eastrop Park Lake	0.47	6A	Nov 2017
BD0817	Whitchurch Silk Mill Race	0.17	5A/6A	Nov 2017
BD0815	Crabtree Grassland	19.04	2B	Nov 2017

Table 09H: Deleted SINC approved between 1st April 2017 and 31st March 2018

No SINC in Basingstoke and Deane Borough Council were deleted during 2017-2018.

Table 09I: Major amendments to SINC between 1st April 2017 and 31st March 2018

Site Ref	Site Name	Reason	Old Size (ha)	New Size (ha)	Old Criteria	New Criteria
BD0789	Field north of Basing Road	Lack of Management	1.56	0.96		

10 Eastleigh Borough Council

10.1 Priority habitats

Table 10A: Extent of Priority habitats (as at 31st March 2018)

Priority Habitat	Comments on Status	Combined Hants area (ha)	% of Combined Hants area	EBC area (ha)	% of EBC area	2016/17 EBC area (ha)	Change in area (ha)
Grasslands							
Lowland Calcareous Grassland	Comprehensive	2,060	0.53				
Lowland Dry Acid Grassland	Comprehensive. Some overlap with Lowland Heath	3,678	0.95	1	0.01	1	0
Lowland Meadows	Comprehensive. Some overlap with Coastal and Floodplain Grazing Marsh and with Wood-Pasture and Parkland.	1,398	0.36	33	0.39	33	0
Purple Moor Grass and Rush Pastures	Comprehensive. Some overlap with Coastal and Floodplain Grazing Marsh.	1,487	0.38	32	0.38	31	1
Heathlands							
Lowland Heathland	Comprehensive. Some overlap with Lowland Dry Acid Grassland.	11,832	3.05	16	0.19	16	0
Woodland, wood-pasture and parkland							
Lowland Beech and Yew Woodland	Not comprehensive. Ongoing work to distinguish from Lowland Mixed Deciduous Woodland in old surveys.	280	0.07	0.7	0.01	1	0
Lowland Mixed Deciduous Woodland	Ongoing work as all ancient/ non ancient woodland has been included yet not all has been surveyed for qualifying NVC types.	36,257	9.33	544	6.38	545	-1
Wet Woodland	Fairly comprehensive. Areas will exist in LMDW that are not yet surveyed for qualifying types.	2,050	0.53	118	1.38	117	1
Wood-Pasture and Parkland	Not comprehensive. Further work needed to classify this habitat within historic parkland.	5,545	1.43	3	0.04	3	0
Arable, orchards and hedgerows							
Arable Field Margins	Incomplete. Figures only show SINCS on arable land designated for rare arable plants.	[81.2]	[0.1]	[0.0]	0.00	[0]	[0]
Hedgerows	No comprehensive information for Priority hedgerows. All hedgerows mapped as linear features (km).	[16,448]	n/a	[301]	n/a	[301]	[0]
Traditional Orchards	Work to be undertaken to incorporate areas recently identified by PTES under contract to NE.	1	0.00	0.3	0.00	0	0

Priority Habitat	Comments on Status	Combined Hants area (ha)	% of Combined Hants area	EBC area (ha)	% of EBC area	2016/17 EBC area (ha)	Change in area (ha)
Open waters							
Eutrophic Standing Waters	No comprehensive information yet available.	45	0.01	0.1	0.00	0	0
Rivers	Incomplete data. Approx. figures for Chalk Rivers only calculated from EA's River GIS layer (km).	[634]	n/a	[24]	n/a	[24]	[0]
Wetlands							
Coastal and Floodplain Grazing Marsh	Work ongoing to verify all qualifying grazing marsh. Some overlap with Lowland Meadows and with Purple Moor Grass and Rush Pastures.	9,431	2.43	323	3.79	324	-1
Lowland Fens	Comprehensive.	1,899	0.49				
Reedbeds	Not comprehensive.	252	0.06	9.3	0.11	9	0
Coastal							
Coastal saltmarsh	EA data partly verified.	896	0.23	29	0.34	29	0
Coastal Sand Dunes	EA data partly verified.	47	0.01	0.1	0.00	0	0
Coastal Vegetated Shingle	Comprehensive.	219	0.06	3.4	0.04	3	0
Intertidal mudflats	EA data partly verified.	4,418	1.14	136	1.59	136	0
Maritime Cliff and Slopes	Comprehensive.	43	0.01				
Saline lagoons	Comprehensive.	54	0.01				
Marine							
Seagrass beds	Not comprehensive. Separate HWT data available.	49	0.01				
Total		81,941	21.09	1,249	14.65	1,249	0

Summary:

Notes:

1. The Hampshire and district totals of Priority habitat are the sum of the individual Priority habitat types (excluding Arable Field Margins and Rivers). This is not the total area of land covered by Priority habitat within Hampshire and each district because some Priority habitat types overlap and hence are double counted (e.g. Coastal and Floodplain Grazing Marsh may overlap Lowland Meadows or Purple Moor Grass and Rush Pastures).
2. Because the total area of Priority habitat may include areas when habitats overlap the % of the district area covered by Priority habitat may be slightly over-exaggerated.
3. Minor changes in area might not always reflect real change, but are results of a rounding of figures.

Sharing information about Hampshire's wildlife

The Hampshire Biodiversity Information Centre Partnership includes local authorities, government agencies, wildlife charities and biological recording groups.

10.2 Nature Conservation Designations

Table 10B: Extent of Nature Conservation Designations (as at 31st March 2018)

Designation	Combined Hants sites (no)	Combined Hants area (ha)	Combined Hants area (%)	EBC sites (no)	EBC area (ha)	EBC area (%)	2016/17 EBC area (ha)	Change (ha)
LNR	66	2,370	1	6	232	2.73	232	0
NNR	11	2,172	1					
RAMSAR	6	36,990	10	1	184	2.16	184	0
SAC	13	37,091	10	2	296	3.47	296	0
SPA	10	41,791	11	1	184	2.16	184	0
SSSI	131	50,556	13	5	427	5.01	427	0
Stat Sites Combined	237	51,372	13	15	632	7.42	632	0
SINC	4,117	36,174	9	148	819	9.61	819	0

Summary:

1. There were changes to statutory sites during 2017/18.
2. For details of any new, amended and deleted SINC's see tables 10G, H & I.

Notes:

1. The areas total for 'Statutory sites combined' may not equal the total for each of the individual statutory site designations because there is often an overlap between statutory designations.

Table 10C: Statutory Designated Sites (as at 31st March 2018)

Designation	Site Name	Area (ha) within district
LNR	Hackett's Marsh	20.36
LNR	Hocombe Mead	8.30
LNR	Manor Farm	144.06
LNR	Mercury Marshes	6.36
LNR	Netley Common	7.50
LNR	Westwood Woodland Park	45.83
Ramsar	Solent & Southampton Water	184.23
SAC	River Itchen	133.70
SAC	Solent Maritime	162.50
SPA	Solent & Southampton Water	183.87
SSSI	Lee-on-the Solent to Itchen Estuary	126.96
SSSI	Lincegrove and Hackett's Marshes	37.81
SSSI	Moorgreen Meadows	14.32
SSSI	River Itchen	158.07
SSSI	Upper Hamble Estuary and Woods	89.77

10.3 Priority Habitats within Designated Sites

Table 10D: Extent of Priority habitats within Designated Sites (as at 31st March 2018)

Designated Sites	Combined Hants area (ha)	Combined Hants area (%)	EBC (ha)	EBC area (%)	2016/17 EBC area (ha)	Change area (ha)
Statutory sites combined	38,194	46.6	434	34.8	434	
SINC	21,697	26.5	507	40.6	506	1
Total combined	59,095	72.1	902	72.2	901	1

Summary:

1. Approx. 72% of Priority habitat in Eastleigh is within designated sites.

Notes:

1. Total Priority habitat in Eastleigh as at 31st March 2018 = 902ha.

10.4 Condition of Sites of Special Scientific Interest (SSSIs)

Table 10E: Conditions of Sites of Special Scientific Interest (SSSIs) (as at 31st March 2018)

Condition	Combined Hants area (ha)	Combined Hants area (%)	EBC area (ha)	EBC area (%)	2016/17 EBC area (ha)	Change in area (ha)
Favourable	21,272.59	42.1	105.77	24.8	197.32	-91.55
Unfavourable Recovering	26,361.33	52.1	182.61	42.8	199.48	-16.87
Unfavourable no Change	2,225.07	4.4	105.97	24.8	29.44	76.53
Unfavourable Declining	673.19	1.3	31.65	7.4		
Part Destroyed	6.34	0.0				
Destroyed	17.44	0.0	0.93	0.2	0.93	0.00
Grand Total	50,555.95	100.0	426.93	100.0	427.17	-0.24

Notes:

1. Although data has been provided by Natural England the total amount of SSSI may differ from NE figures because NE do not always assign a portion of an SSSI to the correct District where the majority of that SSSI occurs within another District, whereas HBIC are able to clip the SSSI management units directly to the District boundaries.

10.5 SINC changes observed and recorded

Table 10F: Extent of changes to SINCS observed and recorded between 1st April 2017 and 31st March 2018

SINCS	Hants sites (no)	Hants sites (area)	EBC sites (no)	EBC sites (area)
Total sites (2016/17)	4,094	36,081.60	148	819.11
New Sites	27	103.91		
Amended Sites	25	-1.90		
Deleted sites	4	-9.89		
Total sites (2017/18)	4,117	36,173.72	148	819.11
Net change	23	92.12		0.00
% change in area		5.58		0.00

Notes:

1. Data extracted from HBIC SINC layer between 1st April 2017 and 31st March 2018.
2. Incorporates the decisions from November 2017 panel.

Table 10G: New SINC approved between 1st April 2017 and 31st March 2018

No new SINC in Eastleigh Borough Council were approved during 2017-2018.

Table 10H: Deleted SINC approved between 1st April 2017 and 31st March 2018

No SINC in Eastleigh Borough Council were deleted during 2017-2018.

Table 10I: Major amendments to SINC between 1st April 2017 and 31st March 2018

No major amendments were made to SINC in Eastleigh Borough Council during 2017-2018.

12 Fareham Borough Council

12.1 Priority habitats

Table 12A: Extent of Priority habitats (as at 31st March 2018)

Priority Habitat	Comments on Status	Combined Hants area (ha)	% of Combined Hants area	FBC area (ha)	% of FBC area	2016/17 FBC area (ha)	Change in area (ha)
Grasslands							
Lowland Calcareous Grassland	Comprehensive	2,060	0.53	17	0.22	17	0
Lowland Dry Acid Grassland	Comprehensive. Some overlap with Lowland Heath	3,678	0.95	6	0.08	6	0
Lowland Meadows	Comprehensive. Some overlap with Coastal and Floodplain Grazing Marsh and with Wood-Pasture and Parkland.	1,398	0.36	24	0.31	24	0
Purple Moor Grass and Rush Pastures	Comprehensive. Some overlap with Coastal and Floodplain Grazing Marsh.	1,487	0.38	4	0.05	4	0
Heathlands							
Lowland Heathland	Comprehensive. Some overlap with Lowland Dry Acid Grassland.	11,832	3.05	2	0.03	2	0
Woodland, wood-pasture and parkland							
Lowland Beech and Yew Woodland	Not comprehensive. Ongoing work to distinguish from Lowland Mixed Deciduous Woodland in old surveys.	280	0.07				
Lowland Mixed Deciduous Woodland	Ongoing work as all ancient/ non ancient woodland has been included yet not all has been surveyed for qualifying NVC types.	36,257	9.33	455	5.85	455	0
Wet Woodland	Fairly comprehensive. Areas will exist in LMDW that are not yet surveyed for qualifying types.	2,050	0.53	51	0.66	51	0
Wood-Pasture and Parkland	Not comprehensive. Further work needed to classify this habitat within historic parkland.	5,545	1.43	22	0.28	22	0
Arable, orchards and hedgerows							
Arable Field Margins	Incomplete. Figures only show SINCs on arable land designated for rare arable plants.	[81.2]	[0.1]	[0.0]	0.00	[0]	[0]
Hedgerows	No comprehensive information for Priority hedgerows. All hedgerows mapped as linear features (km).	[16,448]	n/a	[265]	n/a	[265]	[0]
Traditional Orchards	Work to be undertaken to incorporate areas recently identified by PTES under contract to NE.	1	0.00	0.1	0.00	0	0

Priority Habitat	Comments on Status	Combined Hants area (ha)	% of Combined Hants area	FBC area (ha)	% of FBC area	2016/17 FBC area (ha)	Change in area (ha)
Open waters							
Eutrophic Standing Waters	No comprehensive information yet available.	45	0.01				
Rivers	Incomplete data. Approx. figures for Chalk Rivers only calculated from EA's River GIS layer (km).	[634]	n/a	[11]	n/a	[11]	[0]
Wetlands							
Coastal and Floodplain Grazing Marsh	Work ongoing to verify all qualifying grazing marsh. Some overlap with Lowland Meadows and with Purple Moor Grass and Rush Pastures.	9,431	2.43	343	4.41	344	-1
Lowland Fens	Comprehensive.	1,899	0.49				
Reedbeds	Not comprehensive.	252	0.06	49.3	0.63	49	0
Coastal							
Coastal saltmarsh	EA data partly verified.	896	0.23	30	0.39	30	0
Coastal Sand Dunes	EA data partly verified.	47	0.01	0.0	0.00	0	0
Coastal Vegetated Shingle	Comprehensive.	219	0.06	11.9	0.15	12	0
Intertidal mudflats	EA data partly verified.	4,418	1.14	270	3.47	270	0
Maritime Cliff and Slopes	Comprehensive.	43	0.01	1.4	0.02	1	0
Saline lagoons	Comprehensive.	54	0.01	1.2	0.02	1	0
Marine							
Seagrass beds	Not comprehensive. Separate HWT data available.	49	0.01				
Total		81,941	21.09	1,288	16.55	1,289	-1

Summary: No change in overall area of Priority habitat save for loss or re-interpretation of 1ha floodplain grazing marsh

Notes:

1. The Hampshire and district totals of Priority habitat are the sum of the individual Priority habitat types (excluding Arable Field Margins and Rivers). This is not the total area of land covered by Priority habitat within Hampshire and each district because some Priority habitat types overlap and hence are double counted (e.g. Coastal and Floodplain Grazing Marsh may overlap Lowland Meadows or Purple Moor Grass and Rush Pastures).
2. Because the total area of Priority habitat may include areas when habitats overlap the % of the district area covered by Priority habitat may be slightly over-exaggerated.
3. Minor changes in area might not always reflect real change but are results of a rounding of figures.

12.2 Nature Conservation Designations

Table 12B: Extent of Nature Conservation Designations (as at 31st March 2018)

Designation	Combined Hants sites (no)	Combined Hants area (ha)	Combined Hants area (%)	FBC sites (no)	FBC area (ha)	FBC area (%)	2016/17 FBC area (ha)	Change (ha)
LNR	66	2,370	1	6	418	5.38	418	0
NNR	11	2,172	1	1	120	1.54	120	0
RAMSAR	6	36,990	10	2	540	6.94	540	0
SAC	13	37,091	10	1	195	2.51	195	0
SPA	10	41,791	11	2	526	6.77	527	-1
SSSI	131	50,556	13	6	563	7.23	563	0
Stat Sites Combined	237	51,372	13	18	749	9.62	749	0
SINC	4,117	36,174	9	110	610	7.84	610	0

Summary:

1. There were no changes to statutory sites during 2017/18.
2. There were no new, amended and deleted SINC's during 2017/18. See tables 12G, H & I.

Notes:

1. The areas total for 'Statutory sites combined' may not equal the total for each of the individual statutory site designations because there is often an overlap between statutory designations.

Table 12C: Statutory Designated Sites (as at 31st March 2018)

Designation	Site Name	Area (ha) within district
LNR	Gull Coppice	5.58
LNR	Holly Hill Woodland Park	28.13
LNR	Hook with Warsash	251.31
LNR	Kites Croft	17.04
LNR	Titchfield Haven	92.95
LNR	Warsash Common	23.38
NNR	Titchfield Haven	119.63
Ramsar	Portsmouth Harbour	36.04
Ramsar	Solent & Southampton Water	504.42
SAC	Solent Maritime	195.48
SPA	Portsmouth Harbour	35.73
SPA	Solent & Southampton Water	490.71
SSSI	Downend Chalk Pit	4.36
SSSI	Lee-on-the Solent to Itchen Estuary	344.41
SSSI	Portsdown	6.30
SSSI	Portsmouth Harbour	35.73
SSSI	Titchfield Haven	134.50
SSSI	Upper Hamble Estuary and Woods	37.35

12.3 Priority Habitats within Designated Sites

Table 12D: Extent of Priority habitats within Designated Sites (as at 31st March 2018)

Designated Sites	Combined Hants area (ha)	Combined Hants area (%)	FBC (ha)	FBC area (%)	2016/17 FBC area (ha)	Change area (ha)
Statutory sites combined	38,194	46.6	590	45.7	590	
SINC	21,697	26.5	405	31.4	404	1
Total combined	59,095	72.1	910	70.6	909	1

Summary:

1. Approx. 71% of Priority habitat in Fareham lies within designated sites.

Notes:

1. Total Priority habitat in Fareham as at 31st March 2018 = 1,288 ha.

12.4 Condition of Sites of Special Scientific Interest (SSSIs)

Table 12E: Conditions of Sites of Special Scientific Interest (SSSIs) (as at 31st March 2018)

Condition	Combined Hants area (ha)	Combined Hants area (%)	FBC area (ha)	FBC area (%)	2016/17 FBC area (ha)	Change in area (ha)
Favourable	21,272.59	42.1	106.79	19.0	294.82	-188.03
Unfavourable Recovering	26,361.33	52.1	186.67	33.2	263.60	-76.93
Unfavourable no Change	2,225.07	4.4	264.46	47.0	0.00	264.46
Unfavourable Declining	673.19	1.3	4.73	0.8	4.73	0.00
Part Destroyed	6.34	0.0				
Destroyed	17.44	0.0				
Grand Total	50,555.95	100.0	562.65	100.0	563.15	-0.50

Notes:

1. Although data has been provided by Natural England the total amount of SSSI may differ from NE figures because NE do not always assign a portion of an SSSI to the correct District where the majority of that SSSI occurs within another District, whereas HBIC are able to clip the SSSI management units directly to the District boundaries.
2. Any change in area is due to NE re-digitising boundaries. The number of SSSIs remains the same.
3. Significant coastal habitats areas were re-classified from 'Favourable' and 'Unfavourable Recovering' to 'Unfavourable no Change'.

12.5 SINC changes observed and recorded

Table 12F: Extent of changes to SINCS observed and recorded between 1st April 2017 and 31st March 2018

SINCS	Hants sites (no)	Hants sites (area)	FBC sites (no)	FBC sites (area)
Total sites (2016/17)	4,094	36,081.60	110	610.24
New Sites	27	103.91		
Amended Sites	25	-1.90		
Deleted sites	4	-9.89		
Total sites (2017/18)	4,117	36,173.72	110	610.24
Net change	23	92.12		0.00
% change in area		5.58		0.00

Notes:

1. Data extracted from HBIC SINC layer between 1st April 2017 and 31st March 2018.
2. Incorporates the decisions from November 2017 panel.

Table 12G: New SINCS approved between 1st April 2017 and 31st March 2018

No new SINCS in Fareham Borough Council were approved during 2017-2018.

Table 12H: Deleted SINCS approved between 1st April 2017 and 31st March 2018

No SINCS in Fareham Borough Council were deleted during 2017-2018.

Table 12I: Major amendments to SINCS between 1st April 2017 and 31st March 2018

No major amendments were made to SINCSs in Fareham Borough Council during 2017-2018.

13 Gosport Borough Council

13.1 Priority habitats

Table 13A: Extent of Priority habitats (as at 31st March 2018)

Priority Habitat	Comments on Status	Combined Hants area (ha)	% of Combined Hants area	GBC area (ha)	% of GBC area	2016/17 GBC area (ha)	Change in area (ha)
Grasslands							
Lowland Calcareous Grassland	Comprehensive	2,060	0.53				
Lowland Dry Acid Grassland	Comprehensive. Some overlap with Lowland Heath	3,678	0.95	9	0.33	9	0
Lowland Meadows	Comprehensive. Some overlap with Coastal and Floodplain Grazing Marsh and with Wood-Pasture and Parkland.	1,398	0.36	12	0.44	12	0
Purple Moor Grass and Rush Pastures	Comprehensive. Some overlap with Coastal and Floodplain Grazing Marsh.	1,487	0.38	1	0.04	1	0
Heathlands							
Lowland Heathland	Comprehensive. Some overlap with Lowland Dry Acid Grassland.	11,832	3.05	4	0.15	4	0
Woodland, wood-pasture and parkland							
Lowland Beech and Yew Woodland	Not comprehensive. Ongoing work to distinguish from Lowland Mixed Deciduous Woodland in old surveys.	280	0.07				
Lowland Mixed Deciduous Woodland	Ongoing work as all ancient/ non ancient woodland has been included yet not all has been surveyed for qualifying NVC types.	36,257	9.33	77	2.80	77	0
Wet Woodland	Fairly comprehensive. Areas will exist in LMDW that are not yet surveyed for qualifying types.	2,050	0.53	20	0.73	21	-1
Wood-Pasture and Parkland	Not comprehensive. Further work needed to classify this habitat within historic parkland.	5,545	1.43	15	0.55	14	1
Arable, orchards and hedgerows							
Arable Field Margins	Incomplete. Figures only show SINCS on arable land designated for rare arable plants.	[81.2]	[0.1]	[0.0]	0.00	[0]	[0]
Hedgerows	No comprehensive information for Priority hedgerows. All hedgerows mapped as linear features (km).	[16,448]	n/a	[25]	n/a	[25]	[0]
Traditional Orchards	Work to be undertaken to incorporate areas recently identified by PTES under contract to NE.	1	0.00				

Priority Habitat	Comments on Status	Combined Hants area (ha)	% of Combined Hants area	GBC area (ha)	% of GBC area	2016/17 GBC area (ha)	Change in area (ha)
Open waters							
Eutrophic Standing Waters	No comprehensive information yet available.	45	0.01	1.9	0.07	2	0
Rivers	Incomplete data. Approx. figures for Chalk Rivers only calculated from EA's River GIS layer (km).	[634]	n/a	[0]	n/a	[0]	[0]
Wetlands							
Coastal and Floodplain Grazing Marsh	Work is on-going to verify all qualifying grazing marsh. Some overlap with Lowland Meadows and with Purple Moor Grass and Rush Pastures.	9,431	2.43	58	2.11	59	-1
Lowland Fens	Comprehensive.	1,899	0.49	0	0.00	0	0
Reedbeds	Not comprehensive.	252	0.06	14.0	0.51	14	0
Coastal							
Coastal saltmarsh	EA data partly verified.	896	0.23	28	1.02	28	0
Coastal Sand Dunes	EA data partly verified.	47	0.01	0.4	0.01	0	0
Coastal Vegetated Shingle	Comprehensive.	219	0.06	62.6	2.28	63	0
Intertidal mudflats	EA data partly verified.	4,418	1.14	111	4.04	111	0
Maritime Cliff and Slopes	Comprehensive.	43	0.01				
Saline lagoons	Comprehensive.	54	0.01	9.1	0.33	9	0
Marine							
Seagrass beds	Not comprehensive. Separate HWT data available.	49	0.01				
Total		81,941	21.09	423	15.38	424	-1

Summary: No change in overall area of Priority habitat save for loss or re-interpretation of small area of floodplain grazing marsh and wet woodland

Notes:

1. The Hampshire and district totals of Priority habitat are the sum of the individual Priority habitat types (excluding Arable Field Margins and Rivers). This is not the total area of land covered by Priority habitat within Hampshire and each district because some Priority habitat types overlap and hence are double counted (e.g. Coastal and Floodplain Grazing Marsh may overlap Lowland Meadows or Purple Moor Grass and Rush Pastures).
2. Because the total area of Priority habitat may include areas when habitats overlap the % of the district area covered by Priority habitat may be slightly over-exaggerated.
3. Minor changes in area might not always reflect real change but are results of a rounding of figures.

13.2 Nature Conservation Designations

Table 13B: Extent of Nature Conservation Designations (as at 31st March 2018)

Designation	Combined Hants sites (no)	Combined Hants area (ha)	Combined Hants area (%)	GBC sites (no)	GBC area (ha)	GBC area (%)	2016/17 GBC area (ha)	Change (ha)
LNR	66	2,370	1	2	40	1.45	40	0
NNR	11	2,172	1					
RAMSAR	6	36,990	10	2	165	5.99	165	0
SAC	13	37,091	10	1	4	0.15	4	0
SPA	10	41,791	11	2	161	5.85	161	0
SSSI	131	50,556	13	5	265	9.64	265	0
Stat Sites Combined	237	51,372	13	12	277	10.08	277	0
SINC	4,117	36,174	9	37	369	13.43	368	1

Summary:

1. There were no changes to statutory sites during 2017/18.
2. There were no new or deleted SINC's during 2017/18. For details of amended SINC's see tables 13G, H & I.

Notes:

1. The areas total for 'Statutory sites combined' may not equal the total for each of the individual statutory site designations because there is often an overlap between statutory designations.

Table 13C: Statutory Designated Sites (as at 31st March 2018)

Designation	Site Name	Area (ha) within district
LNR	The Wild Grounds	28.41
LNR	West of the River Alver	11.55
Ramsar	Portsmouth Harbour	160.68
Ramsar	Solent & Southampton Water	4.06
SAC	Solent & Isle of Wight Lagoons	4.06
SPA	Portsmouth Harbour	160.77
SPA	Solent & Southampton Water	0.00
SSSI	Browdown	65.65
SSSI	Gilkicker Lagoon	4.06
SSSI	Lee-on-the Solent to Itchen Estuary	2.09
SSSI	Portsmouth Harbour	165.23
SSSI	The Wild Grounds	28.16

13.3 Priority Habitats within Designated Sites

Table 13D: Extent of Priority habitats within Designated Sites (as at 31st March 2018)

Designated Sites	Combined Hants area (ha)	Combined Hants area (%)	GBC (ha)	GBC area (%)	2016/17 GBC area (ha)	Change area (ha)
Statutory sites combined	38,194	46.6	225	53.0	225	
SINC	21,697	26.5	147	34.6	146	1
Total combined	59,095	72.1	363	85.7	364	-1

Summary:

1. Approx. 86% of Priority habitat in Gosport District is within designated sites.

Notes:

1. Total Priority habitat in Gosport District as at 31st March 2018 = 423ha.

13.4 Condition of Sites of Special Scientific Interest (SSSIs)

Table 13E: Conditions of Sites of Special Scientific Interest (SSSIs) (as at 31st March 2018)

Condition	Combined Hants area (ha)	Combined Hants area (%)	GBC area (ha)	GBC area (%)	2016/17 GBC area (ha)	Change in area (ha)
Favourable	21,272.59	42.1	32.22	12.2	85.63	-53.41
Unfavourable Recovering	26,361.33	52.1	171.12	64.5	171.08	0.04
Unfavourable no Change	2,225.07	4.4	55.44	20.9	2.10	53.34
Unfavourable Declining	673.19	1.3	1.95	0.7	1.95	0.00
Part Destroyed	6.34	0.0				
Destroyed	17.44	0.0	4.46	1.7	4.46	0.00
Grand Total	50,555.95	100.0	265.19	100.0	265.19	0.00

Notes:

1. Although data has been provided by Natural England the total amount of SSSI may differ from NE figures because NE do not always assign a portion of an SSSI to the correct District where the majority of that SSSI occurs within another District, whereas HBIC are able to clip the SSSI management units directly to the District boundaries.
2. Some significant areas of coastal habitat were re-classified from 'Favourable' to 'Unfavourable no Change'.

13.5 SINC changes observed and recorded

Table 13F: Extent of changes to SINC observed and recorded between 1st April 2017 and 31st March 2018

SINCS	Hants sites (no)	Hants sites (area)	GBC sites (no)	GBC sites (area)
Total sites (2016/17)	4,094	36,081.60	37	368.36
New Sites	27	103.91		
Amended Sites	25	-1.90	1	0.90
Deleted sites	4	-9.89		
Total sites (2017/18)	4,117	36,173.72	37	369.26
Net change	23	92.12		0.90
% change in area		5.58		0.24

Notes:

1. Data extracted from HBIC SINC layer between 1st April 2017 and 31st March 2018.
2. Incorporates the decisions from November 2017 panel.

Table 13G: New SINC approved between 1st April 2017 and 31st March 2018

No new SINCS in Gosport Borough Council were approved during 2017-2018.

Table 13H: Deleted SINCS approved between 1st April 2017 and 31st March 2018

No SINCS in Gosport Borough Council were deleted during 2017-2018.

Table 13I: Major amendments to SINCS between 1st April 2017 and 31st March 2018

Site Ref	Site Name	Reason	Old Size (ha)	New Size (ha)	Old Criteria	New Criteria
GO0029	Bastion No.1 Moat	New Survey or Information	1.19	2.09	4A	2B/4A/6A

15 Havant Borough Council

15.1 Priority habitats

Table 15A: Extent of Priority habitats (as at 31st March 2018)

Priority Habitat	Comments on Status	Combined Hants area (ha)	% of Combined Hants area	HVBC area (ha)	% of HVBC area	2016/17 HVBC area (ha)	Change in area (ha)
Grasslands							
Lowland Calcareous Grassland	Comprehensive	2,060	0.53	5	0.06	5	0
Lowland Dry Acid Grassland	Comprehensive. Some overlap with Lowland Heath	3,678	0.95	21	0.27	21	0
Lowland Meadows	Comprehensive. Some overlap with Coastal and Floodplain Grazing Marsh and with Wood-Pasture and Parkland.	1,398	0.36	32	0.40	32	0
Purple Moor Grass and Rush Pastures	Comprehensive. Some overlap with Coastal and Floodplain Grazing Marsh.	1,487	0.38	5	0.06	5	0
Heathlands							
Lowland Heathland	Comprehensive. Some overlap with Lowland Dry Acid Grassland.	11,832	3.05	1	0.01	1	0
Woodland, wood-pasture and parkland							
Lowland Beech and Yew Woodland	Not comprehensive. Ongoing work to distinguish from Lowland Mixed Deciduous Woodland in old surveys.	280	0.07				
Lowland Mixed Deciduous Woodland	Ongoing work as all ancient/ non ancient woodland has been included yet not all has been surveyed for qualifying NVC types.	36,257	9.33	185	2.34	181	4
Wet Woodland	Fairly comprehensive. Areas will exist in LMDW that are not yet surveyed for qualifying types.	2,050	0.53	37	0.47	37	0
Wood-Pasture and Parkland	Not comprehensive. Further work needed to classify this habitat within historic parkland.	5,545	1.43	15	0.19	15	0

Priority Habitat	Comments on Status	Combined Hants area (ha)	% of Combined Hants area	HVBC area (ha)	% of HVBC area	2016/17 HVBC area (ha)	Change in area (ha)
Arable, orchards and hedgerows							
Arable Field Margins	Incomplete. Figures only show SINC's on arable land designated for rare arable plants.	[81.2]	[0.1]	[22.5]	[1.02]	[0]	[22.5]
Hedgerows	No comprehensive information for Priority hedgerows. All hedgerows mapped as linear features (km).	[16,448]	n/a	[200]	n/a	[200]	[0]
Traditional Orchards	Work to be undertaken to incorporate areas recently identified by PTES under contract to NE.	1	0.00				
Open waters							
Eutrophic Standing Waters	No comprehensive information yet available.	45	0.01				
Rivers	Incomplete data. Approx. figures for Chalk Rivers only calculated from EA's River GIS layer (km).	[634]	n/a	[0]	n/a	[0]	[0]
Wetlands							
Coastal and Floodplain Grazing Marsh	Work is ongoing to verify all qualifying grazing marsh. Some overlap with Lowland Meadows and with Purple Moor Grass and Rush Pastures.	9,431	2.43	170	2.15	162	8
Lowland Fens	Comprehensive.	1,899	0.49				
Reedbeds	Not comprehensive.	252	0.06	1.9	0.02	2	0
Coastal							
Coastal saltmarsh	EA data partly verified.	896	0.23	210	2.65	209	1
Coastal Sand Dunes	EA data partly verified.	47	0.01	39.7	0.50	40	0
Coastal Vegetated Shingle	Comprehensive.	219	0.06	46.8	0.59	47	0
Intertidal mudflats	EA data partly verified.	4,418	1.14	1,380	17.45	1,380	0
Maritime Cliff and Slopes	Comprehensive.	43	0.01	0.8	0.01	1	0
Saline lagoons	Comprehensive.	54	0.01	4.5	0.06	6	-1
Marine							
Seagrass beds	Not comprehensive. Separate HWT data available.	49	0.01	45.6	0.58	46	0
Total		81,941	21.09	2,200	27.82	2,189	11

Summary: A small increase in Priority habitat type as more lowland mixed deciduous woodland and grazing marsh qualifies as a result of new surveys

Notes:

1. The Hampshire and district totals of Priority habitat are the sum of the individual Priority habitat types (excluding Arable Field Margins and Rivers). This is not the total area of land covered by Priority habitat within Hampshire and each district because some Priority habitat types overlap and hence are double counted (e.g. Coastal and Floodplain Grazing Marsh may overlap Lowland Meadows or Purple Moor Grass and Rush Pastures).
2. Because the total area of Priority habitat may include areas when habitats overlap the % of the district area covered by Priority habitat may be slightly over-exaggerated.
3. Minor changes in area might not always reflect real change, but are results of a rounding of figures.

15.2 Nature Conservation Designations**Table 15B: Extent of Nature Conservation Designations (as at 31st March 2018)**

Designation	Combined Hants sites (no)	Combined Hants area (ha)	Combined Hants area (%)	HVBC sites (no)	HVBC area (ha)	HVBC area (%)	2016/17 HVBC area (ha)	Change (ha)
LNR	66	2,370	1	8	218	2.75	218	0
NNR	11	2,172	1					
RAMSAR	6	36,990	10	1	2,430	30.72	2,430	0
SAC	13	37,091	10	1	2,269	28.69	2,269	0
SPA	10	41,791	11	1	2,430	30.72	2,430	0
SSSI	131	50,556	13	4	2,676	33.83	2,677	0
Stat Sites Combined	237	51,372	13	15	2,717	34.35	2,716	1
SINC	4,117	36,174	9	145	882	11.15	882	0

Summary:

1. There were minor changes to statutory sites during 2017/18 as a result of re-digitisation of boundaries by NE
2. For details of any new, amended and deleted SINC's see tables 15G, H & I.

Notes:

1. The areas total for 'Statutory sites combined' may not equal the total for each of the individual statutory site designations because there is often an overlap between statutory designations.

Table 15C: Statutory Designated Sites (as at 31st March 2018)

Designation	Site Name	Area (ha) within district
LNR	Brook Meadow (Emsworth)	3.34
LNR	Farlington Marshes	1.32
LNR	Gutner Point	68.99
LNR	Hayling Billy	42.03
LNR	Hazleton Common LNR	1.40
LNR	Sandy Point	18.32
LNR	The Kench, Hayling Island	6.04
LNR	West Hayling	76.23
Ramsar	Chichester and Langstone Harbours	2,429.96
SAC	Solent Maritime	2,269.34
SPA	Chichester and Langstone Harbours	2,429.77
SSSI	Chichester Harbour	1,004.86
SSSI	Langstone Harbour	1,424.90
SSSI	Sinah Common	242.51
SSSI	Warblington Meadow	3.87

15.3 Priority Habitats within Designated Sites

Table 15D: Extent of Priority habitats within Designated Sites (as at 31st March 2018)

Designated Sites	Combined Hants area (ha)	Combined Hants area (%)	HVBC (ha)	HVBC area (%)	2016/17 HVBC area (ha)	Change area (ha)
Statutory sites combined	38,194	46.6	1,784	81.0	1,775	9
SINC	21,697	26.5	306	13.9	308	-2
Total combined	59,095	72.1	2,083	94.6	2,071	12

Summary:

1. Approx. 95% of Priority habitat in Havant lies within designated sites.

Notes:

1. Total Priority habitat in Havant as at 31st March 2018 = 2,200 ha.

15.4 Condition of Sites of Special Scientific Interest (SSSIs)

Table 15E: Conditions of Sites of Special Scientific Interest (SSSIs) (as at 31st March 2018)

Condition	Combined Hants area (ha)	Combined Hants area (%)	HVBC area (ha)	HVBC area (%)	2016/17 HVBC area (ha)	Change in area (ha)
Favourable	21,272.59	42.1	35.93	1.3	110.12	-74.19
Unfavourable Recovering	26,361.33	52.1	2,565.99	95.9	2,566.46	-0.47
Unfavourable no Change	2,225.07	4.4	74.23	2.8		74.23
Unfavourable Declining	673.19	1.3				
Part Destroyed	6.34	0.0				
Destroyed	17.44	0.0				
Grand Total	50,555.95	100.0	2,676.15	100.0	2,676.58	-0.43

Notes:

1. Although data has been provided by Natural England the total amount of SSSI may differ from NE figures because NE do not always assign a portion of an SSSI to the correct District where the majority of that SSSI occurs within another District, whereas HBIC are able to clip the SSSI management units directly to the District boundaries.
2. A significant loss of coastal habitat in 'Favourable' condition with a corresponding increase in the amount classified as 'Unfavourable no Change'.

15.5 SINC changes observed and recorded

Table 15F: Extent of changes to SINCS observed and recorded between 1st April 2017 and 31st March 2018

SINCS	Hants sites (no)	Hants sites (area)	HVBC sites (no)	HVBC sites (area)
Total sites (2016/17)	4,094	36,081.60	144	881.75
New Sites	27	103.91	1	0.22
Amended Sites	25	-1.90		
Deleted sites	4	-9.89		
Total sites (2017/18)	4,117	36,173.72	145	881.97
Net change	23	92.12	1	0.22
% change in area		5.58		0.02

Notes:

1. Data extracted from HBIC SINC layer between 1st April 2017 and 31st March 2018.
2. Incorporates the decisions from November 2017 panel.

Table 15G: New SINC approved between 1st April 2017 and 31st March 2018

Site Ref	Site Name	New Size (ha)	New Criteria	Panel date
HV0150	St Faith's Churchyard	0.22	2B/7A	Nov 2017

Table 15H: Deleted SINC approved between 1st April 2017 and 31st March 2018

No SINC in Havant Borough Council were deleted during 2017-2018.

Table 15I: Major amendments to SINC between 1st April 2017 and 31st March 2018

No major amendments were made to SINC in Havant Borough Council during 2017-2018.