

Monitoring Change in Priority Habitats, Priority Species and Designated Areas in Hampshire

For Local Plan Annual Monitoring Reports

2016/17

Includes detailed chapters for

- Basingstoke & Deane
- Fareham
- Gosport
- Havant

Produced by

Hampshire Biodiversity Information Centre

November 2017

Contents

1 Biodiversity Monitoring in Hampshire	4
2 Priority habitats	8
3 Nature Conservation Designations	13
4 Priority habitats within Designated Sites	14
5 Condition of Sites of Special Scientific Interest (SSSIs).....	15
6 SINC changes observed and recorded	17
7. SINC in Positive Management (SD 160) - Not reported on for 2016-17	19
8 Changes in Notable Species Status over the period 2007-2017	20
09 Basingstoke and Deane Borough Council.....	28
12 Fareham Borough Council.....	34
13 Gosport Borough Council	39
15 Havant Borough Council.....	44

This page is intentionally left blank.

1 Biodiversity Monitoring in Hampshire

1.1 Background

The Localism Act 2011 requires every local authority to produce their Authority's Monitoring Report containing information on a number of topics including the progress and effectiveness of the Local Plan, and the extent to which the planning policies set out in the Local Plan documents are being achieved. This can include policies covering biodiversity and nature conservation.

This is important to enable communities and interested parties to be aware of progress and, if required, to identify suitable indicators for monitoring biodiversity.

The Hampshire Biodiversity Information Centre (HBIC) provides comprehensive information relating to biodiversity in Hampshire, working in partnership with both data users and data providers for public benefit. HBIC is able to monitor changes in area of designated sites and habitats by district/borough/ unitary through the information it gathers and maintains on a Geographic Information System (GIS). HBIC can also provide information on species distribution and trends across Hampshire through the data it holds on behalf of its partner species recording groups and in consultation with them.

This report continues, as in previous years, to provide baseline data to local authorities in order to monitor changes in priority habitats, designated sites and selected notable species.

1.2 Explanatory Notes

1.2.1 Mapping change in extent of priority habitat: The full extent of priority habitats in Hampshire is not fully known - and may never be fully known due to the dynamic state of our countryside and the difficulties of obtaining access to many areas. HBIC is working with its funding partners to improve information on Priority habitat extent and condition through the Hampshire Habitat Survey Programme and from other survey data that becomes available. This information is used by HBIC to maintain a GIS layer mapping the extent of broad and priority habitats in Hampshire. Any 'gains' in priority habitat can be due to additional unknown habitat being discovered, habitat restoration or creation, or re-interpretation of old survey data. Reasons for change are logged using the habitat data capture tool. HBIC also log changes to SINCs which has been recently re-surveyed which can include losses of priority habitat to development or agricultural improvement. These are set out in the detailed District chapters of the report.

HBIC, along with many other environmental records centres, have translated their habitat data into a classification system called IHS (Integrated Habitat System). It is not a straightforward 1:1 translation from the previous Phase 1 habitat categories into IHS and there will continue to be changes to the baseline which are solely due to the on-going re-interpretation of old survey data and aerial photographs into IHS.

More importantly, the Habitat GIS dataset has been converted into the OS MasterMap framework resulting in an increase in number of polygons from c80,000 to over several million. This new dataset requires careful on-going validation and tidying up of what was essentially an automated process, particularly if new datasets are incorporated from other organisations. As the MasterMap version used is now quite old an upgrade to the latest version is planned soon which may lead to further habitat/land-use changes as 'new development' is plugged into the habitat layer.

This dataset is being used for all HBIC's work including data requests, screening planning applications, and for the production of this monitoring report. Whilst for most Priority habitats there continues to be small changes in extent, as a result of new field survey or aerial photographic interpretation, for two habitats there had been some significant changes in extent which are summarised below and have been referred to in previous monitoring reports:

Lowland Mixed Deciduous Woodland - decreased from 46,217 ha to 36,291ha during the 2011-12 period, partly because 4,400ha were re-interpreted to wood-pasture in the New Forest and because rows of trees and small 'clumps' (especially in urban situations) were stripped out, and polygons were snapped to MasterMap boundaries rather than 'canopy' outline from Aps. Any small clump which, when surveyed, is found to support a qualifying NVC type is added back in. Similarly larger woodlands are removed from the priority habitat type if, when surveyed, they do not support qualifying NVC types. It does therefore mean there will be many particularly smaller woods currently included that when surveyed may be found not to support qualifying NVC types

Coastal salt marsh - all salt marsh data was overwritten with EA data during the 2011-12 period with a resulting 50% 'loss' of saltmarsh. Much of it had been re-interpreted as 'intertidal mudflats' and so the two figures should be treated together until such time as the data can be validated against the latest aerial photographs. It appears that the interpretation in the western Solent was accurate and agreed with HBIC's data whilst the eastern half was very patchy in its accuracy with perhaps lower salt marsh not being visible (i.e. below high water).

The checking/re-interpretation of the EA coastal data is being undertaken as and when time allows.

1.2.3. Revised UK List of Priority Habitats: In addition to changes caused by IHS a further 16 Priority habitats were added to the UK List (NERC S41 list) during the 2011-12 period. For Hampshire, this includes 'Traditional Orchards' and 'Open mosaic habitats on previously developed land', along with an expansion in scope and definition of 'Hedgerows', 'Ponds' and 'Rivers'. The definitions still need refining for these habitats and a set of traditional orchard polygons created by the People's Trust for Endangered Species with funding from Natural England will need to be verified by HBIC before being added to the GIS dataset. Similarly, for a reed bed dataset produced by the RSPB.

1.2.4 Mapping change in priority habitat extent due to development: As mentioned, it is difficult to identify changes in habitat extent or species status that have occurred solely due to the impact of development, particularly within a given year. A GIS layer of the boundaries of all completed planning permissions from the previous year would be needed, which would need to show the actual footprint of each development plus any mitigation measures, or restoration/ re-creation opportunities in order to predict a net loss or gain in biodiversity. Meanwhile, the reasons for any changes in habitat extent observed from field survey are being logged but may often be due to development or some other land use change which has occurred since the last survey - which may be up to 10-20 years ago.

1.2.5 Assessment of SSSI condition: The condition of priority habitats is currently known for those habitats designated as Sites of Special Scientific Interest (SSSIs) and for a random sample of SINC's that may be surveyed in any one year. Natural England conduct condition assessments on SSSIs on a rolling programme with some input from HBIC surveys. Information on the SSSI condition assessment is available from Natural England for the reporting period and has, for this report, been summarised at the precise District level.

1.2.6 Mapping changes in Sites of Importance for Nature Conservation: HBIC has responsibility for identifying, mapping and monitoring SINC's, and for maintaining an up to date GIS layer on behalf of the local planning authorities. HBIC's SINC's database records new SINC's, deleted SINC's and all changes to individual SINC's, including minor changes to boundaries as a result of snapping to MasterMap. Many of the amendments and deletions will relate to changes that may have occurred many years before the sites were re-surveyed but were only recorded and approved during this reporting period - similar to mapping changes in habitat extent.

Please note that the data within this report excludes SINC's which have been approved by the Panel but which remain as candidate SINC's due to objections from landowners who wish to provide their own evidence back to the SINC Panel. They are however shown on GIS updates to partners as Candidate SINC's. Any changes to SINC's during the 2016/17 period are described in full in the detailed District chapters.

1.2.7 Mapping change in species populations: HBIC holds over 6 million species records for Hampshire, a number that is increasing rapidly, particularly as technology for on-line recording improves. Whilst it can be difficult to detect species trends at the County level, let alone at a district level, a suite of 50 species have been chosen for which there appears to be good data and for which there is wide geographic spread. **It has been agreed that population trends for the 50 species should only be gathered every 5 years which includes this year.** See Section 8.

1.2.8 Source/date for habitat and designations data: All statistics are based on the HBIC GIS layers archived at the end of March 2016 and March 2017 except for the SINC's data which is derived from the SINC's database once Panel approval had been given in March 2017 and the GIS layer updated in June 2017.

1.2.9 The New Forest: The New Forest District is treated as two separate entities: the New Forest National Park Authority (which includes a small part of Test Valley and Wiltshire) and the remaining New Forest District.

1.2.10 The South Downs National Park: because only part of the SDNP lies within Hampshire separate analysis has not been done for that part of the national park.

Further explanatory notes and a brief summary of trends are given at the end of some of the tables.

Sharing information about Hampshire's wildlife

The Hampshire Biodiversity Information Centre Partnership includes local authorities, government agencies, wildlife charities and biological recording groups.



2 Priority habitats

Table 1: Extent of Priority habitats in Hampshire (as at 31st March 2017)

Priority Habitat	Comments on Status	BDBC	EBC	EHDC	FBC	GBC	HDC	HvBC	NFDC	NFNPA	PCC	RBC	SCC	TVBC	WCC	Total Area (ha)	% of total Hants area	2015/16 Total area (ha)	Change in area (ha)
Grassland																			
Lowland Calcareous Grassland	Comprehensive	222		343	17		3	5	282	0	55		1	764	364	2,056	0.5	2,097	-41
Lowland Dry Acid Grassland	Comprehensive. Some overlap with Lowland Heath	24	1	172	6	9	192	21	41	3,058	7	67	2	64	11	3,675	1	3,681	-6
Lowland Meadows	Comprehensive. Some overlap with Coastal and Floodplain Grazing Marsh and with Wood-Pasture and Parkland.	152	33	95	24	12	113	32	179	275	20	20	29	127	292	1,403	0.4	1,480	-77
Purple Moor Grass and Rush Pastures	Comprehensive. Some overlap with Coastal and Floodplain Grazing Marsh.	34	31	24	4	1	116	5	27	1,033		14	2	134	56	1,481	0.4	1,480	1
Heathland																			
Lowland Heathland	Comprehensive. Some overlap with Lowland Dry Acid Grassland.	180	16	692	2	4	272	1	605	9,934		106	2	19	0	11,833	3.1	11,813	20

Priority Habitat	Comments on Status	BDBC	EBC	EHDC	FBC	GBC	HDC	HvBC	NFDC	NFNPA	PCC	RBC	SCC	TVBC	WCC	Total Area (ha)	% of total Hants area	2015/16 Total area (ha)	Change in area (ha)
Woodland, wood-pasture and parkland																			
Lowland Beech and Yew Woodland	Not comprehensive. On-going work to distinguish from Lowland Mixed Deciduous Woodland.	8.8	0.7	91.4			0.4		2.2	88.3			0.1	48.9	40.9	281	0.1	254	27
Lowland Mixed Deciduous Woodland	Ongoing work as all ancient/non ancient woodland has been included yet not all surveyed for qualifying NVC types.	6,272	545	5,554	455	77	2,613	181	1,625	6,660	8	224	264	5,853	5,720	36,051	9.3	36,006	45
Wet Woodland	Fairly comprehensive. Areas will exist in LMDW that have not yet been surveyed for qualifying types.	417	117	201	51	21	128	37	64	487	1	47	56	177	233	2,037	0.5	2,041	-4
Wood-Pasture and Parkland	Not comprehensive. Further work needed to classify this habitat within historic parkland	506	3	17	22	14	210	15	4	4,448	10		67	105	119	5,540	1.4	5,518	22

Priority Habitat	Comments on Status	BDBC	EBC	EHDC	FBC	GBC	HDC	HvBC	NFDC	NFNPA	PCC	RBC	SCC	TVBC	WCC	Total Area (ha)	% of total Hants area	2015/16 Total area (ha)	Change in area (ha)
Arable, orchards and hedgerows																			
Arable Field Margins	Incomplete. Figures only show SINC's on arable land designated for rare arable plant assemblages.	[26.3]												[23.5]	[0.9]	[50.7]	0	91.7	-41.0
Hedgerows	No comprehensive information for Priority hedgerows. All hedgerows mapped as linear features (km)	[2,712]	[301]	[2,134]	[265]	[25]	[919]	[200]	[2,104]	[1,922]	[66]	[11]	[12]	[2,741]	[3,036]	[16,448]	n/a	[1]	16,447
Traditional Orchards	Work to be undertaken to incorporate areas identified by PTES under contract to NE.		0.3		0.1											0	0	0	0
Open waters																			
Eutrophic Standing Waters	No comprehensive information yet available.	0.1	0.1			1.9			34.5			0.4	0.7	8.3		45	0	45	0
Rivers	Incomplete data. Approx. figures for Chalk Rivers only calculated from EA's River GIS layer (km).	[101]	[24]	[25]	[11]		[63]		[76]	[15]			[19]	[182]	[118]	[634]		[634]	[0]

Priority Habitat	Comments on Status	BDBC	EBC	EHDC	FBC	GBC	HDC	HvBC	NFDC	NFNPA	PCC	RBC	SCC	TVBC	WCC	Total Area (ha)	% of total Hants area	2015/16 Total area (ha)	Change in area (ha)
Wetlands																			
Coastal and Floodplain Grazing Marsh	Work ongoing to verify all qualifying grazing marsh. Some overlap with Lowland Meadows and with Purple Moor Grass and Rush Pastures.	812	324	702	344	59	857	162	1,519	1,405	83	30	19	1,925	1,214	9,455	2.4	9,561	-106
Lowland Fens	Comprehensive.	3		18		0	12		9	1,849				3	5	1,899	0.5	1,899	0
Reedbeds	Not comprehensive.	2	9.3		48.9	14.4	0.6	1.8	41	80.6	21	0.1	3.7	45.2	7.2	276	0.1	279	-3
Coastal																			
Coastal saltmarsh	EA data partly verified.		29		30	28		209	158	351	58		2	2	2	869	0.2	869	0
Coastal Sand Dunes	EA data partly verified.		0.1		0	0.4		39.8	2.1	5.3	0.3		0.2			47	0	48	-1
Coastal Vegetated Shingle	Comprehensive.		3.4		11.9	62.6		47.2	20.5	49.1	25.7		2.7			223	0.1	223	0
Intertidal mudflats	EA data partly verified.		136		270	111		1,380	408	854	1,124		129		6	4,418	1.1	4,418	0
Maritime Cliff and Slopes	Comprehensive.				1.4			0.8	37.5	3.2						43	0	43	0
Saline lagoons	Comprehensive.				1.2	9.1		5.8	3.3	32.5	3.6		0			55	0	55	0
Marine																			
Seagrass beds	Not Comprehensive. Separate HWT data available.							45.6			3.3					49	0	49	0
Total		8,633	1,249	7,909	1,289	424	4,517	2,189	5,062	30,613	1,420	509	580	9,275	8,070	81,736	21	81,862	-125

Notes:

1. The Combined total area of Hampshire (to LWM) & NF National Park is 388,467 ha.
2. The extent of Priority habitat remains at 21% of the total area of Hampshire and the New Forest National Park area even though 123ha has been lost overall (representing 0. 2% of the total area of Priority habitat). See notes below
3. The Hampshire and LPA totals of Priority habitat are the sum of the individual Priority habitat types (excluding Arable Field Margins, Hedgerows and Rivers). These are not the total areas of land covered by Priority habitat because some Priority habitat types overlap and hence are double counted (e.g. Floodplain Grazing Marsh may overlap Lowland Meadows or Purple Moor Grass and Rush Pastures).
4. Values of 0 or 0.0 in habitat per district/unitary authority mean the habitat was found, but the area is smaller than 0.5ha or 0.05ha. Empty fields mean the habitat was not found at all.
5. **Lowland Mixed Deciduous Woodland, Lowland Meadow, Calcareous Grassland and arable Margins have decreased in area:**
 - **Loss of downland in the Winchester District due to; improvement at Chilcomb Down, further scrubbing up since previous surveys at Fawley Down and Whiteshute Ridge, and re-interpretation at Alresford Golf Course to remove fairways etc.**
 - **Loss of lowland meadow due to re-interpretation from new surveys and aerial photos to improved grassland in Hart and arable use in Test Valley – these are not actual losses. One area of SINC grassland has been lost to development in Hart.**
 - **For woodland the net loss is due to a general tidying up and re-interpretation of new surveys leading to both small losses and gains**
 - **For arable margins an in-depth audit of species present has been done to ensure they meet the Plantlife Important Arable Plant Area scoring for county or national importance. Those that didn't remain as SINC's for notable species but not as a priority habitat assemblage.**
6. **An increase in heathland in East Hants was due to finding more relic heath under conifer plantations in areas around Bordon.**
7. **A loss of reedbed in the Gosport area (Alver Valley) is due to a re-interpretation to swamp or a transition to wet woodland.**
8. Salt-marsh and inter-tidal mudflat figures should be combined for the time being.
9. Very minor changes in area might not always reflect real change because of the rounding of figures.
10. The rounding of figures may also not reflect the more detailed figures given in the District accounts.

3 Nature Conservation Designations

Table 2: Extent of Nature Conservation Designations in Hampshire (as at 31st March 2017)

Designation	BDBC (ha)	EBC (ha)	EHDC (ha)	FBC (ha)	GBC (ha)	HDC (ha)	HvBC (ha)	NFDC (ha)	NFNPA (ha)	PCC (ha)	RBC (ha)	SCC (ha)	TVBC (ha)	WCC (ha)	Total area (ha)	% of Hants	2015/16 Total area (ha)	Change in area (ha)
LNR	245	232	338	418	40	76	218	32	416	118	2	30	102	103	2,370	0.61	2,366	4
NNR	23		358	120		31		339	1,199					103	2,173	0.56	2,173	
RAMSAR		184		540	165		2,430	1,629	30,151	1,708		111	52	23	36,993	9.52	36,993	
SAC		296	1,540	195	4		2,269	614	30,641	542		20	788	182	37,091	9.55	37,095	-4
SPA		184	1,757	527	161	2,099	2,430	1,626	30,121	1,708	451	111	599	23	41,797	10.76	41,797	
SSSI	806	427	2,710	563	265	2,696	2,677	2,571	32,189	1,787	471	216	1,868	1,313	50,559	13.02	50,560	-1
Stat Sites Combined	861	632	2,812	749	277	2,724	2,716	2,523	32,265	1,788	474	233	1,927	1,365	51,346	13.22	51,345	1
SINC	6,201	819	6,166	610	368	2,004	882	2,446	3,044	342	459	423	5,575	6,743	36,082	9.28	36,037	45

Notes:

1. A total of 28 new SINC's were approved by the SINC panel and designated during 2016/17. 2 SINC's were deleted. The net increase in overall SINC area was 44.49ha
2. In 2016 a new LNR 'Dell Piece West' in East Hampshire was designated.
3. The statutory sites data was downloaded from Natural England on 1st April 2017, so the data has been considered to be as at 31st March 2017. Extent of areas of statutory designations are changing very slightly as NE are re-digitising presumably to MasterMap boundaries.
4. The figures do not include the marine pSPA "Solent and Dorset Coast" which extends well outside the County boundary and includes mainly open water habitat.
5. The area totals for 'Statutory sites combined' do not equal the total for each of the individual statutory site designations for each district because there is often an overlap between statutory designations.

Sharing information about Hampshire's wildlife

The Hampshire Biodiversity Information Centre Partnership includes local authorities, government agencies, wildlife charities and biological recording groups.

4 Priority habitats within Designated Sites

Table 3: Extent of Priority habitats within Designated Sites in Hampshire (as at 31st March 2017)

Designated Sites	BDBC (ha)	EBC (ha)	EHDC (ha)	FBC (ha)	GBC (ha)	HDC (ha)	HvBC (ha)	NFDC (ha)	NFNPA (ha)	PCC (ha)	RBC (ha)	SCC (ha)	TVBC (ha)	WCC (ha)	Total area (ha)	% of total Priority Habitat	2015/16 Total area (ha)	Change area (ha)
Statutory sites combined	645	434	1,501	590	225	1,209	1,775	2,016	25,716	1,309	153	246	1,412	935	38,166	46.69	38,147	19
SINC	4,246	506	3,299	404	146	1,304	308	1,607	1,827	176	174	247	3,660	3,504	21,408	26.19	21,363	45
Total combined	4,855	901	4,747	909	364	2,481	2,071	3,449	27,531	1,371	324	481	4,914	4,393	58,791	71.93	58,732	59
% of total Priority Habitat	56	72	60	71	86	55	95	68	90	97	64	83	53	54				

Notes:

1. The total area of Priority Habitat in Hampshire (to LWM) & NF National Park = 81,736 ha.
2. The area totals for 'Total combined' designated sites do not equal the sum of the 'statutory sites combined' and 'SINC' figures for each district and the total for Hampshire because there is a small overlap between statutory designated sites and SINCs (where different features are cited).

5 Condition of Sites of Special Scientific Interest (SSSIs)

Table 4: Condition of Sites of Special Scientific Interest (SSSIs) in Hampshire (as at 31st March 2017)

District	Favourable		Unfavourable Recovering		Unfavourable No Change		Unfavourable Declining		Part Destroyed		Destroyed		Grand Total
	Area (ha)	Area (%)	Area (ha)	Area (%)	Area (ha)	Area (%)	Area (ha)	Area (%)	Area (ha)	Area (%)	Area (ha)	Area (%)	Area (ha)
Basingstoke & Deane	279	34.64%	492	60.98%	32	4.02%	3	0.36%					806
Eastleigh	197	46.19%	199	46.7%	29	6.89%					1	0.22%	427
East Hampshire	939	34.63%	1,765	65.12%	3	0.12%	3	0.12%					2,710
Fareham	295	52.35%	264	46.81%		0%	5	0.84%					563
Gosport District	86	32.29%	171	64.5%	2	0.79%	2	0.74%			4	1.68%	265
Hart	326	12.08%	2,232	82.79%	8	0.29%	124	4.59%	6	0.24%			2,696
Havant	110	4.11%	2,566	95.89%									2,677
New Forest District	1,158	45.05%	1,320	51.34%	74	2.88%	19	0.73%					2,571
New Forest NP	17,014	52.86%	13,920	43.24%	870	2.7%	383	1.19%			2	0.01%	32,189
Portsmouth	257	14.36%	1,528	85.52%		0.01%					2	0.1%	1,787
Rushmoor	72	15.35%	393	83.37%		0%	6	1.28%					471
Southampton	111	51.28%	102	47.29%	3	1.43%							216
Test Valley	452	24.2%	1,208	64.65%	191	10.21%	18	0.94%					1,868
Winchester	384	29.26%	663	50.48%	182	13.85%	76	5.81%			8	0.59%	1,313
Grand Total	21,680	42.9%	26,823	53.1%	1,394	2.8%	639	1.3%	6	0%	17	0%	50,559

Summary:

1. The total amount of SSSI in Hampshire in 'Favourable' or 'Unfavourable Recovering' condition now lies at 96.0%, a decrease of 1.1% from 2015-16.
2. The total amount of SSSI in each District may differ from Natural England figures because NE do not always assign separate portions of SSSIs to the correct District; where the majority of a SSSI occurs within another District (and hence is assigned to that District) HBIC will clip the SSSI management units exactly to the District boundaries.
3. There are minor discrepancies in totals for LPA area compared to the LPA detailed tables because of different rounding levels.

Sharing information about Hampshire's wildlife

The Hampshire Biodiversity Information Centre Partnership includes local authorities, government agencies, wildlife charities and biological recording groups.

Table 5: Percentages for SSSIs in Favourable and Unfavourable Recovering condition in Hampshire (as at 31st March 2017)

District	%SSSI in 'Favourable' or 'Unfavourable Recovering' condition		
	2015/16	2016/17	Change
Basingstoke & Deane	95.62%	95.62%	0%
Eastleigh	92.89%	92.89%	0%
East Hampshire	99.75%	99.75%	0%
Fareham	99.16%	99.16%	0%
Gosport District	96.79%	96.79%	0%
Hart	94.88%	94.88%	0%
Havant	100%	100%	0%
New Forest District	96.38%	96.39%	0.01%
New Forest NP	97.91%	96.1%	-1.81%
Portsmouth	99.89%	99.89%	0%
Rushmoor	98.72%	98.72%	0%
Southampton	98.57%	98.57%	0%
Test Valley	88.88%	88.85%	-0.03%
Winchester	79.74%	79.74%	0%
Total	97.09%	95.93%	-1.16%

Summary:

1. There were only very minor or no changes/improvements in the coverage of 'Favourable' or 'Unfavourable Recovering' SSSIs.
2. Nearly all Districts have attained at least 95% of their SSSIs in 'Favourable' or 'Unfavourable Recovering' condition.
3. Winchester is still showing the lowest % in these two categories mainly due to over 30 % of the River Itchen SSSI continuing to be in 'unfavourable no change' or 'unfavourable declining' condition.

6 SINC changes observed and recorded

Table 6: Extent of changes observed and recorded between 1st April 2016 and 31st March 2017

District	SINCs (31/03/2016)		SINCs (31/03/2017)		New SINCs		Amended SINCs		Deleted SINCs		Net change		
	Number	Area (ha)	Number	Area (ha)	Number	Area (ha)	Number	Area (ha)	Number	Area (ha)	Number	Area (ha)	% change in area
BDBC	797	6,180.97	800	6,201.01	3	21.20	3	-1.16			3	20.04	0.32
EBC	146	818.03	148	819.11	2	2.22	3	-1.14			2	1.08	0.13
EHDC	570	6,175.19	575	6,165.55	5	5.07	9	-14.71			5	-9.64	-0.16
FBC	109	610.72	110	610.24	1	0.12	1	-0.60			1	-0.48	-0.08
GBC	37	368.36	37	368.36			1	0.00			0	0.00	0.00
HDC	274	1,986.47	281	2,003.51	7	24.22	5	-7.18			7	17.04	0.86
HvBC	144	885.96	144	881.75			1	-4.21			0	-4.21	-0.48
NFDC	225	2,445.87	226	2,446.43	1	0.56					1	0.56	0.02
NFNPA	386	3,033.86	389	3,044.22	3	10.36	2	0.00			3	10.36	0.34
PCC	27	338.78	27	341.66			2	2.88			0	2.88	0.85
RBC	38	480.59	40	458.61	2	5.40	2	-27.38			2	-21.98	-4.57
SCC	49	423.22	49	423.22							0	0.00	0.00
TVBC	577	5,545.91	579	5,574.90	3	30.59	2	0.00	1	-1.60	2	28.99	0.52
WCC	689	6,743.17	689	6,743.02	1	7.62	10	-7.17	1	-0.60	0	-0.15	0.00
Total	4068	36,037.11	4094	36,081.60	28	107.36	41	-60.67	2	-2.20	26	44.49	0.12

Summary:

1. The number of SINC's at the end of the 2015/17 year should have read 4068 (as above) rather than the 4065 reported at the end of last year. This was due to:
 - 2 SINC's having been contested and then not included once no opposing evidence has been received ; WC0701 Knowle Hospital Row and BD0803 Coachroad Belt West
 - Not including Kennel Copse, Chilworth (TV0580) which was split from North Stoneham Ponds TV0548.
 - The Original Clay's and Fincham's Copses SINC (HA0277) was split into 2 separate SINC's (HA0118)
 - The number of SINC's in Havant was wrong – should have read 144 not 145..
2. There were 28 new SINC's approved by the SINC panel during 2016-17 resulting in an extra 107.36 ha designated.
3. Unfortunately amendments to 41 SINC's resulted in a loss of 60.67 ha, due to degradation of habitat and some development
4. There were also 2 SINC's approved for deletion by the SINC panel during 2016-17 resulting in a further loss of 2.2ha. These losses were due to development (WCC) in one SINC and incorporation of best areas into adjacent SINC's from another SINC (TVBC).
5. Net gain of 44.48 ha
6. See individual District tables for details of new and deleted SINC's and major amendments to SINC's

7. SINCs in Positive Management (SD 160) - Not reported on for 2016-17

8 Changes in Notable Species Status over the period 2007-2017

Background

Part of this Monitoring report is to present data on the population and distribution trends for a representative sample of 50 of Hampshire's notable species over a rolling ten year period, to be revisited every 5 years.

The original core output indicator as requested in government guidance on local authority performance was to measure change in status of species as a result of impact from planning and development. This is not an obtainable figure as the majority of change is due to on-going and cumulative impacts of agricultural practice, climate change, urbanisation, and disturbance from recreation etc. Data will simply be presented as a change in population and distribution with anecdotal statements to explain any change.

Selection of Species

An agreed list of 50 notable species was drawn following consultation in 2006 with the statutory agencies, local authorities and species recording groups in Hampshire. The 50 species are listed in the tables below and cover a range of taxonomic groups; are representative of the various habitat types present in Hampshire; cover both rural and urban areas; and are relevant to most local authorities.

Of the 50 species, 30 are UK Priority species and are listed on S41 of the NERC Act 2006, the remainder are on the Hampshire Biodiversity Action Plan list. Rarer species were excluded on the basis they have such a restricted distribution that their relevance to the reporting process would be fairly limited. The bias towards vascular plants, birds and Lepidoptera reflects the large data-sets that already exist for these groups and the ongoing programme of data acquisition. These groups are also sensitive indicators of environmental change, and are being used by Government agencies and various NGOs for their reporting purposes.

Criteria for Selection

The criterion for selection of species was as follows:

1. Individual species must be on the Hampshire Notables list.
2. They should be representative of a wide range of taxonomic groups.
3. They should be representative of a wide range of UK Priority habitats in Hampshire.
4. Species chosen should have a reasonable distribution (i.e. not just one or two sites)
5. A significant proportion of the species chosen should be found in each District.
6. Species chosen should be sensitive to change (planning, agriculture, climate etc.)
7. Species selected are primarily those for which good data exists, obtained either annually, or through periodic (e.g. 3 year/ 5 year) survey programmes
8. A good number of the selected species are flagship species with wide public interest.

Change in population status

For consistency, the categories used to report on population status have not changed over the past 11 years and match those categories previously used by Defra for national reporting:

- Increasing
- Stable
- Declining* (slowing)
- Declining** (continuing/accelerating)
- Decline? (possibly stabilising?)
- Fluctuating/ no clear trend
- Lost
- Unknown/insufficient data

In 2006 the Hampshire Biodiversity Information Centre (HBIC) compiled a baseline set of statistics for the previous ten year period (1995-2005) for the 50 species consultation with the species recording groups in Hampshire,

Up until 2012 HBIC has reported annually on the changes observed over the previous rolling 10 year period. However since 2013 it was decided to report back every 5 years on the basis that it was too difficult to pick out long term trends in population numbers against short term impacts such as extra cold winters, very wet spring etc. particularly for some of the more under-recorded species. Plus many major surveys for particular species are often repeated in a comprehensive manner on a 5-year intervals rather than every year.

For the year to 31st March 2017 any change in status in the 50 species is reported for the 2007-2017 period, and summarised in Table 8 (penultimate column). From this table the percentage of species in each of the categories is calculated and shown as pie charts in section 8.3.

NB Those trends shown in [] brackets are where HBIC have made a judgment based on available data, national trends and previous judgments.

Change in Distribution by District

See Table 9. A new analysis has been done of all 2007-2017 records by District.

Some districts have gained or lost 1-2 species, possibly more due to increased or decreased recording effort rather than any change in distribution through changes in land management and/or climatic conditions. They should be read in conjunction with changes in population in Table 8

8.1 Population Trends of the 50 Hampshire Notable Species

Table 8 : Population Trends of Hampshire Notable Species (N = 50) from 2007 to 2017

† UK Priority Species (S41 NERC Act)

Scientific name	Common name	Group	HBAP (Vol.2) 2000	Trend 1995-2005 (assessed 2006)	Trend 2000-2010 (assessed 2011)	Trend 2001-2011 (Assessed 2012)	Trend 2002-2012 (assessed 2013)	Trend 2007-2017 (ass. Oct 2017)
<i>Triturus cristatus</i> †	great crested newt	Amphibian	Decline	Decline	Decline**	[Decline**]	Decline**	Decline**¹
<i>Bombus humilis</i> †	brown-band. carder bee	Bee	Decline	Unknown	[Increase]	[Increase]	[Increase]	[Stable]
<i>Lucanus cervus</i> †	stag beetle	Beetle	Decline	Stable	[Stable]	[Stable]	[Stable]	[Stable]²
<i>Alauda arvensis</i> †	skylark	Bird	Decline	Decline*	Stable	Stable	Decline	Decline
<i>Branta b. bernicla</i> †	dark-bellied Brent goose	Bird	Stable	Decline*	Decline	Decline	Stable	Stable
<i>Caprimulgus europ.</i> †	nightjar	Bird	Stable	Increase	Stable	Stable	Stable	Stable
<i>Lullula arborea</i> †	woodlark	Bird	Increasing	Increase	Stable	Increase	Stable	Stable
<i>Luscinia megarhyn.</i>	nightingale	Bird	Decline	Decline?	Decline	Decline	Decline	Decline
<i>Miliaria calandra</i> †	corn bunting	Bird	Rapid Decline	Decline**	Decline	Decline	Decline	Decline
<i>Perdix perdix</i> †	grey partridge	Bird	Rapid Decline	Decline**	Decline	Stable	Decline	Decline
<i>Pyrrhula pyrrhula</i> †	bullfinch	Bird	Decline	Stable	Stable	Stable	Decline	Stable
<i>Streptopelia turtur</i> †	turtle dove	Bird	Rapid Decline	Decline**	Decline	Decline	Decline	Decline
<i>Sylvia undata</i>	Dartford warbler	Bird	Stable	Increase	Decline	Decline	Increase	Increase³
<i>Tringa totanus</i>	redshank	Bird	Rapid Decline	Decline**	Decline	Stable	Decline	Decline
<i>Vanellus vanellus</i> †	lapwing	Bird	Rapid Decline	Stable	Decline	Decline	Decline	Decline
<i>Argynnis paphia</i>	silver-washed fritillary	Butterfly	Stable	Stable	Increase	[Stable]	[Increase}	Increase
<i>Cupido minimus</i> †	small blue	Butterfly	Rapid Decline	Decline*	Decline*	Decline*	[Decline*]	Fluctuating
<i>Hamearis lucina</i> †	Duke of Burgundy	Butterfly	Decline	Decline**	Decline*	Decline*	[Decline*}	Decline**

¹ The national status of Great Crested Newt is still thought to be **Decline (continuing)** and that this applies on a county level.

² <http://www.iucnredlist.org/details/157554/3>

³ Dartford Warbler was shown as declining because of the 95% reduction in its population in the Thames Basin and Wealden Heaths as a result of the recent cold winters. Prior to that it was increasing and is now showing a slow recovery from a low base in the North East of the county.

Scientific name	Common name	Group	HBAP (Vol.2) 2000	Trend 1995-2005 (assessed 2006)	Trend 2000-2010 (assessed 2011)	Trend 2001-2011 (Assessed 2012)	Trend 2002-2012 (assessed 2013)	Trend 2007-2017 (ass. Oct 2017)
<i>Hesperia comma</i>	silver-spotted skipper	Butterfly	Stable	Increase	Fluctuating	Fluctuating	[Stable]	Decline ⁴
<i>Lysandra coridon</i>	chalkhill blue	Butterfly	Decline	Fluctuating	Fluctuating	Fluctuating	{Stable}	Fluctuating
<i>Plebejus argus</i> †	silver-studded blue	Butterfly	Decline	Stable	Stable	Stable	[Stable]	Stable ⁵
<i>Gammarus insensibilis</i> †	lagoon sand shrimp	Crustacean	Decline	Unknown	Unknown	Unknown	[Unknown]	[Stable] ⁶
<i>Coenagrion mercuriale</i> †	southern damselfly	Dragonfly	Stable	Stable	Stable	[Stable]	[Stable]	Declining ⁷
<i>Asilus crabroniformis</i> †	hornet robberfly	Fly	Decline	Stable	[Stable]	[Stable]	[Stable]	[Stable]
<i>Carex divisa</i> †	divided sedge	Flw Plant	Stable	Stable	[Stable]	Stable	Stable	Decline**
<i>Chamaemelum nobile</i> †	chamomile	Flw Plant	Decline	Stable	[Stable]	Stable	Stable	Decline** ⁸
<i>Epipactis phyllanthes</i>	green fl.helleborine	Flw Plant	Decline	Stable	[Decline?]	Decline	Decline	Decline**
<i>Gentiana pneumon.</i>	marsh gentian	Flw Plant	Decline	Stable	[Unknown]	Fluctuating	Fluctuating	Fluctuating
<i>Juniperus communis</i> †	juniper	Flw Plant	Decline	Decline*	[Decline]	Decline	Decline	Decline**
<i>Lithospermum arvense</i>	corn gromwell	Flw Plant	Rapid Decline	Decline*	[Decline]	Decline	Decline	Decline*
<i>Orchis morio</i>	green-winged orchid	Flw Plant	Rapid Decline	Decline*	[Decline]	Decline	Decline	Decline*
<i>Pulicaria vulgaris</i> †	small fleabane	Flw Plant	Stable	Stable	[Decline]	Fluctuating	Fluctuating	Fluctuating
<i>Pulmonaria longifolia</i>	narrow leaved lungwort	Flw Plant	Decline	Stable	[Decline]	Decline	Decline	Decline**
<i>Oenanthe fluviatilis</i>	river water-dropwort	Flw Plant	Rapid Decline	Stable	[Decline]	Decline	Decline*	Decline*

⁴ Following range expansion and recolonisation of several new sites in the late 1990s, the Silver-spotted Skipper has had mixed fortunes over recent years. Warm, wet summers and a decline in rabbit pressure at several key sites resulted in increased turf heights in late summer leading to sub-optimal conditions for this short-turf specialist.

⁵ Whilst the overall situation for Silver-studded Blue appears stable, there are growing concerns that overgrazing in parts of the New Forest (particularly round the edges) is causing a decline in numbers and local population loss in smaller habitat patches.

⁶ Trends were previously based on a 1997 survey of the Hampshire saline lagoons. A Natural England funded survey of all lagoons in 2013 recorded its presence in saline lagoons at Farlington Marshes (new) and Gilkicker Lagoon, with multiple records within the lagoons at Pennington Marshes. The data was obtained from the NBN Atlas.

⁷ UK picture http://jncc.defra.gov.uk/pdf/Article17Consult_20131010/S1044_UK.pdf

⁸ Decline is marked outside the New Forest, where populations are probably stable.

Scientific name	Common name	Group	HBAP (Vol.2) 2000	Trend 1995-2005 (assessed 2006)	Trend 2000-2010 (assessed 2011)	Trend 2001-2011 (Assessed 2012)	Trend 2002-2012 (assessed 2013)	Trend 2007-2017 (ass. Oct 2017)
<i>Thesium humifusum</i>	bastard toadflax	Flw Plant	Decline	Stable	[Stable]	Stable	Stable	Decline**
<i>Zostera marina</i>	eelgrass	Flw Plant	Decline	Unknown	Stable	[Stable]	[Stable]	Stable ⁹
<i>Poronia punctata †</i>	nail fungus	Fungi	Stable	Stable	Stable	Stable	Stable	Declining ¹⁰
<i>Gomphocerippus rufus</i>	rufous grasshopper	Grasshoppe	Stable	Unknown	[Unknown]	[Unknown]	[Unknown]	[Stable]
<i>Arvicola terrestris†</i>	water vole	Mammal	Rapid Decline	Stable	Stable	Stable	[Stable]	Stable ¹¹
<i>Eptesicus serotinus</i>	Serotine bat	Mammal	Stable	Decline**	[Decline]	Stable	Stable	Decline? ¹²
<i>Lepus europaeus †</i>	brown hare	Mammal	Decline	Stable	Stable	Stable	[Stable]	Stable
<i>Muscardinus avellan †</i>	dormouse	Mammal	Decline	Stable	Stable	Stable	[Stable]	Decline* ¹³
<i>Vertigo moulinsiana †</i>	Desmoulin's whorl snail	Molluscs	Stable?	Stable	Stable	Stable	Stable	[Stable]
<i>Apoda limacodes</i>	festoon	Moth	Decline	Increase	[stable]	Stable	Stable	Increase
<i>Catocala promissa †</i>	light crimson underwing	Moth	Stable	Stable	[Stable]	Stable	Stable	Stable
<i>Hemaris fuciformis</i>	broad-bord. bee hawk	Moth	Decline	Stable	[Stable]	Fluctuating	Fluctuating	Fluctuating
<i>Hypena rostralis</i>	buttoned snout	Moth	Decline	Increase	[Stable]	Stable	Stable	Increase
<i>Minoa murinata †</i>	drab looper	Moth	Decline	Stable	[Stable]	Stable	Stable	Decline
<i>Shargacucullia lychnitist</i>	striped lychnis	Moth	Stable	Stable	[Stable]	Stable	Stable	Stable
<i>Coronella austriaca †</i>	smooth snake	Reptile	Decline	Stable	Unknown	[Unknown]	Unknown	Unknown ¹⁴

9 Repeat surveys on selected eelgrass beds carried out by HIWWT and the EA suggest these beds are stable. However, there are thought to be local declines in some areas as a result of physical disturbance from fishing activity, which has been highlighted by the Defra European Marine Sites Risk Review for the Solent EMS.

¹⁰ UK picture http://iucn.ekoo.se/iucn/species_view/198420/

¹¹ Water voles in Hampshire may be considered to be showing a slight trend upward, coupled with several recent and successful reintroduction programmes..

¹² HBG are aware of fewer maternity roosts in Hampshire. However, while recorder effort is increasing, is still too low to indicate any clear trends. National Bat Monitoring Programme records trends from 1999 to 2016 show the maternity roost count figure is a decline of 1.3% (a decline of 19.9% over the whole period).

¹³ Although many new records have come to light during the last ten years, several of the the continuing monitoring programmes have shown a marked decrease in activity and presence, not only in Hampshire but also the neighbouring counties.

¹⁴ The New Forest Smooth Snake Survey Group has been running a surveillance project since 2015 to assist with regional conservation status

8.2 Distribution of the 50 Hampshire Notable Species

Table 9 : Distribution of Hampshire Species (N=50) from 2007 to 2017

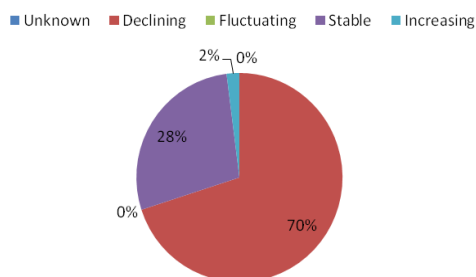
Scientific name	Common name	Group	District														
			B	EH	E	F	G	Ht	Hv	ND	NP	P	R	S	T	W	
<i>Triturus cristatus</i>	great crested newt	Amphib	✓	✓	✓	✓	✓	✓	✓		✓	✓	✓		✓	✓	✓
<i>Bombus humilis</i>	brown-band carder bee	Bees		x		✓	✓			✓	x	x	✓		✓	x	✓
<i>Lucanus cervus</i>	stag beetle	Beetles	✓	✓	✓	✓	✓	✓	✓	✓	✓	✓	✓	✓	✓	✓	✓
<i>Alauda arvensis</i>	skylark	Birds	✓	✓	✓	✓	✓	✓	✓	✓	✓	✓	✓	✓	✓	✓	✓
<i>Branta bernicla bernicla</i>	dark-bellied Brent goose	Birds		✓	✓	✓	✓			✓	✓	✓	✓		✓	✓	✓
<i>Caprimulgus europ.</i>	nightjar	Birds	✓	✓	✓	✓	✓	✓	✓	✓	✓	✓	✓	✓	✓	✓	✓
<i>Lullula arborea</i>	woodlark	Birds	✓	✓	✓	✓	✓	✓	✓	✓	✓	✓	✓	✓	✓	✓	✓
<i>Luscinia megarhynchos</i>	nightingale	Birds	✓	✓	✓	✓	✓	✓	✓	✓	✓	✓	✓	✓	✓	✓	✓
<i>Emberizac alandra</i>	corn bunting	Birds	✓	✓		✓			✓	✓	✓	✓				✓	✓
<i>Perdix perdix</i>	grey partridge	Birds	✓	✓	✓	✓			✓	✓	✓	✓			✓	✓	✓
<i>Pyrrhula pyrrhula</i>	bullfinch	Birds	✓	✓	✓	✓	✓	✓	✓	✓	✓	✓	✓	✓	✓	✓	✓
<i>Streptopelia turtur</i>	turtle dove	Birds	✓	✓	✓	✓	✓	✓	✓	✓	✓	✓	✓	✓	✓	✓	✓
<i>Sylvia undata</i>	Dartford warbler	Birds	✓	✓	✓	✓	✓	✓	✓	✓	✓	✓	✓	✓	✓	✓	✓
<i>Tringa totanus</i>	redshank	Birds	✓	✓	✓	✓	✓	✓	✓	✓	✓	✓			✓	✓	✓
<i>Vanellus vanellus</i>	lapwing	Birds	✓	✓	✓	✓	✓	✓	✓	✓	✓	✓	✓	✓	✓	✓	✓
<i>Argynnis paphia</i>	silver-washed fritillary	Butterflies	✓	✓	✓	✓	✓	✓	✓	✓	✓	✓	✓	✓	✓	✓	✓
<i>Cupido minimus</i>	small blue	Butterflies	✓	✓	✓	✓	✓		✓	✓	✓	✓				✓	✓
<i>Hamearis lucina</i>	Duke of Burgundy	Butterflies	✓	✓							✓	✓				✓	✓
<i>Hesperia comma</i>	silver-spotted skipper	Butterflies		✓							✓		✓			✓	✓
<i>Lysandra coridon</i>	chalkhill blue	Butterflies	✓	✓	✓	✓	✓	✓	✓	✓	✓	✓	✓	✓	✓	✓	✓
<i>Plebejus argus</i>	silver-studded blue	Butterflies	✓	✓	✓	✓			✓		✓	✓	✓	✓			✓
<i>Gammarus insensibilis</i>	lagoon sand shrimp	Crustacea					✓					✓	✓				
<i>Coenagrion mercuriale</i>	southern damselfly	Dragonfly			✓						✓	✓				✓	✓
<i>Asilus crabroniformis</i>	hornet robberfly	Flies		✓							✓	✓	✓			✓	✓
<i>Carex divisa</i>	divided sedge	Flw Plants		✓		✓	✓			✓	✓	✓	✓		✓		

			B	EH	E	F	G	Ht	Hv	ND	NP	P	R	S	T	W
<i>Chamaemelum nobile</i>	chamomile	Flw Plants	x	✓			✓	✓	✓	✓	✓	✓	✓		✓	✓
<i>Epipactis phyllanthes</i>	Green-flowered. helleborine	Flw Plants	✓	✓	✓			✓		✓			✓	✓	✓	✓
<i>Gentiana pneumon.</i>	marsh gentian	Flw Plants						✓			✓				✓	
<i>Juniperus communis</i>	juniper	Flw Plants	✓	✓		✓				✓	✓	✓			✓	✓
<i>Lithospermum arvense</i>	field gromwell	Flw Plants	✓	✓											✓	✓
<i>Oenanthe fluviatilis</i>	river water-dropwort	Flw Plants			✓			x			✓			✓	✓	✓
<i>Orchis morio</i>	green-winged orchid	Flw Plants	✓	✓	✓		✓		✓	✓	✓	x	✓	✓	✓	✓
<i>Pulicaria vulgaris</i>	small fleabane	Flw Plants	✓							✓	✓					
<i>Pulmonaria longifolia</i>	narrow leaved lungwort	Flw Plants								✓	✓					
<i>Thesium humifusum</i>	bastard toadflax	Flw Plants				✓			✓	✓		✓			✓	✓
<i>Zostera marina/noltii</i>	eelgrass	Flw Plants				✓	✓		✓		✓	✓				
<i>Poronia punctata</i>	nail fungus	Fungi									✓					
<i>Gomphocerippus rufus</i>	rufous grasshopper	Grasshopper		✓												✓
<i>Arvicola terrestris</i>	water vole	Mammals	✓		✓	✓	✓	✓	✓	✓	✓	✓		✓	✓	✓
<i>Eptesicus serotinus</i>	Serotine bat	Mammals	✓	✓	✓	✓		✓	✓	✓	✓		✓	✓	✓	✓
<i>Lepus europaeus</i>	brown hare	Mammals	✓	✓	✓			✓		✓	✓				✓	✓
<i>Muscardinus avellan.</i>	dormouse	Mammals	✓	✓	✓	✓		✓	✓	✓				✓	✓	✓
<i>Vertigo moulinsiana</i>	Desmoulin's whorl snail	Molluscs	x							✓	x				x	x
<i>Apoda limacodes</i>	festoon	Moths	✓	✓	✓	✓	✓	✓	✓	✓	✓	✓	✓	✓	✓	✓
<i>Catocala promissa</i>	light crimson underwing	Moths			✓					✓	✓				✓	
<i>Hemaris fuciformis</i>	broad-bord. bee hawk	Moths	✓	✓			✓	✓		✓	✓				✓	✓
<i>Hypena rostralis</i>	buttoned snout	Moths	✓	✓	✓	✓		✓	✓	✓	✓	✓	✓	✓	✓	✓
<i>Minoa murinata</i>	drab looper	Moths	✓					✓		✓					✓	✓
<i>Shargacucullia lychnitis</i>	striped lychnis	Moths	✓	✓		✓		✓	✓					x	✓	✓
<i>Coronella austriaca</i>	smooth snake	Reptiles		✓				✓		✓	✓					
		Total	32	36	28	29	24	29	28	41	40	30	18	25	39	40
		Prev.total	32	36	28	29	24	30	27	42	41	28	18	24	39	38

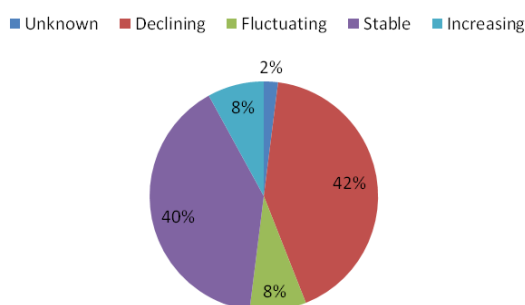
1. '✓' means the species occurs in the District (2005-2015), from records held by HBIC and those received from the species groups. 'Occurs' means possible/confirmed breeding or regular sightings in the area. Irregular or transient records are discounted where possible or given ✓ where 3 or less records. '✓' means new record (or returning) and 'x' means no longer falls within reporting period.
2. B = Basingstoke & Deane, EH = East Hampshire, E = Eastleigh, F = Fareham, G = Gosport, Ht = Hart, Hv = Havant, ND = New Forest District, NP = New Forest NPA, P = Portsmouth, R = Rushmoor, S = Southampton, T = Test Valley, W = Winchester

8.3 Summary of trends for the 50 Hampshire Notable Species – assessed in 2017 for the period 2007 – 2017.

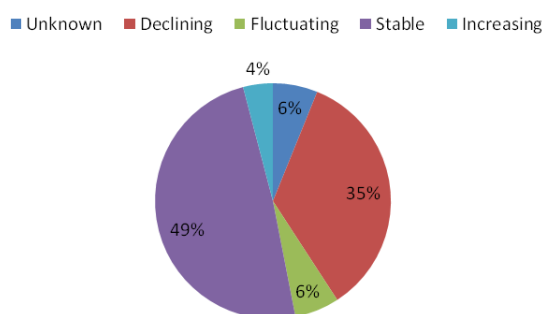
1. Assessed from Hampshire BAP 2000



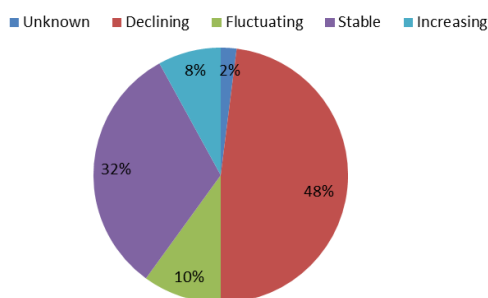
2. Assessed trends for 1995-2005



3. Assessed trends for 2002-2012



4. Assessed trends for 2007-2017



Summary

The last decade has seen rates of decline increase again for several of Hampshire’s notable species. There are also concerns that “Stable” for many species means stabilised at low (still vulnerable) levels, rather than stabilising at a higher more sustainable level.

Since the last report for 2002-2012 **the number of species showing a decline has increased from 35% to 48%**, whilst one species has remained in the ‘unknown’ category where there is uncertainty due it being the first year of a new survey

The next review will be undertaken in 2022 for the 2012-2022 period.

09 Basingstoke and Deane Borough Council

09.1 Priority habitats

Table 09A: Extent of Priority habitats (as at 31st March 2017)

Priority Habitat	Comments on Status	Combined Hants area (ha)	% of Combined Hants area	BDBC area (ha)	% of BDBC area	2015/16 BDBC area (ha)	Change in area (ha)
Grasslands							
Lowland Calcareous Grassland	Comprehensive	2,056	0.53	222	0.35	217	5
Lowland Dry Acid Grassland	Comprehensive. Some overlap with Lowland Heath	3,675	0.95	24	0.04	25	-1
Lowland Meadows	Comprehensive. Some overlap with Coastal and Floodplain Grazing Marsh and with Wood-Pasture and Parkland.	1,403	0.36	152	0.24	157	-5
Purple Moor Grass and Rush Pastures	Comprehensive. Some overlap with Coastal and Floodplain Grazing Marsh.	1,481	0.38	34	0.05	34	0
Heathlands							
Lowland Heathland	Comprehensive. Some overlap with Lowland Dry Acid Grassland.	11,833	3.05	180	0.28	180	0
Woodland, wood-pasture and parkland							
Lowland Beech and Yew Woodland	Not comprehensive. Ongoing work to distinguish from Lowland Mixed Deciduous Woodland in old surveys.	281	0.07	8.8	0.01	9	0
Lowland Mixed Deciduous Woodland	Ongoing work as all ancient/ non ancient woodland has been included yet not all has been surveyed for qualifying NVC types.	36,051	9.28	6,272	9.90	6,231	41
Wet Woodland	Fairly comprehensive. Areas will exist in LMDW that are not yet surveyed for qualifying types.	2,037	0.52	417	0.66	417	0
Wood-Pasture and Parkland	Not comprehensive. Further work needed to classify this habitat within historic parkland.	5,540	1.43	506	0.80	506	0
Arable, orchards and hedgerows							
Arable Field Margins	Incomplete. Figures only show SINC on arable land designated for rare arable plant assemblages	[50.7]	0.00	[26.3]	[0.04]	[26.3]	[0]
Hedgerows	No comprehensive information for Priority hedgerows. All hedgerows mapped as linear features (km).	[16,457]	n/a	[2,721]	n/a	[2,721]	[0]
Traditional Orchards	Work to be undertaken to incorporate areas recently identified by PTES under contract to NE.	0	0.00				

Priority Habitat	Comments on Status	Combined Hants area (ha)	% of Combined Hants area	BDBC area (ha)	% of BDBC area	2015/16 BDBC area (ha)	Change in area (ha)
Open waters							
Eutrophic Standing Waters	No comprehensive information yet available.	45	0.01	0.1	0.00	0	0
Rivers	Incomplete data. Approx. figures for Chalk Rivers only calculated from EA's River GIS layer (km).	[634]	n/a	[101]	n/a	[101]	[0]
Wetlands							
Coastal and Floodplain Grazing Marsh	Ongoing work to identify all qualifying grazing marsh. Some overlap with Lowland Meadows and with Purple Moor Grass and Rush Pastures.	9,455	2.43	812	1.28	819	-7
Lowland Fens	Comprehensive.	1,899	0.49	3	0.00	3	0
Reedbeds	Not comprehensive.	276	0.07	2.0	0.00	2	0
Total		76,032	19.57	8,633	13.62	8,600	33

Summary: The main increase in priority habitat area is with lowland mixed deciduous woodland as a result of more woodland qualifying as a result of new surveys

Notes:

1. Coastal and Marine categories and areas are not included as they are not relevant for this district.
2. The Hampshire and district totals of Priority habitat are the sum of the individual Priority habitat types (excluding Arable Field Margins, Hedgerows and Rivers). This is not the total area of land covered by Priority habitat within Hampshire and each district because some Priority habitat types overlap and hence are double counted (e.g. Coastal and Floodplain Grazing Marsh may overlap Lowland Meadows or Purple Moor Grass and Rush Pastures).
3. Because the total area of Priority habitat may include areas where habitats overlap the % of the district area covered by Priority habitat may be slightly over-exaggerated.
4. Values of 0 or 0.0 in habitat per district/unitary authority mean the habitat was found, but the area is smaller than 0.5ha or 0.05ha). Empty fields mean no habitat yet mapped.
5. Very small changes in area might not always reflect real change, but are results of a rounding of figures.

09.2 Nature Conservation Designations

Table 09B: Extent of Nature Conservation Designations (as at 31st March 2017)

Designation	Combined Hants sites (no)	Combined Hants area (ha)	Combined Hants area (%)	BDBC sites (no)	BDBC area (ha)	BDBC area (%)	2015/16 BDBC area (ha)	Change (ha)
LNR	66	2,370	1	7	245	0.39	245	0
NNR	11	2,173	1	1	23	0.04	23	0
RAMSAR	6	36,993	10					
SAC	13	37,091	10					
SPA	10	41,797	11					
SSSI	131	50,559	13	20	806	1.27	806	0
Stat Sites Combined	237	51,346	13	28	861	1.36	861	0
SINC	4,094	36,082	9	800	6,201	9.78	6,181	20

Summary:

1. There were no changes to statutory sites during 2016/17.
2. For details of any new, amended and deleted SINC's see tables 09G, H & I.

Notes:

1. The areas total for 'Statutory sites combined' may not equal the total for each of the individual statutory site designations because there is often an overlap between statutory designations.

Table 09C: Statutory Designated Sites (as at 31st March 2017)

Designation	Site Name	Area (ha) within district
LNR	Chineham Woods	9.17
LNR	Daneshill Park Woods	4.43
LNR	Herbert Plantation	25.60
LNR	Pamber Forest	190.13
LNR	Popley Ponds	1.44
LNR	The Mill Field	11.68
LNR	Up Nately	2.83
NNR	Ashford Hill	23.39
SSSI	Ashford Hill Woods and Meadows	141.55
SSSI	Bere Mill Meadows	10.27
SSSI	Burghclere Beacon	80.67
SSSI	Butter Wood	45.31
SSSI	Duncroft Farm Pit	0.12
SSSI	East Aston Common	0.53
SSSI	Greenham and Crookham Commons	0.46
SSSI	Greywell Tunnel (Basingstoke Canal)	0.11
SSSI	Highclere Park	69.58
SSSI	Hook Common and Bartley Heath	6.55
SSSI	Ladle Hill	10.50
SSSI	Mapledurwell Fen	0.42
SSSI	Micheldever Spoil Heaps	26.73
SSSI	Old Burghclere Lime Quarry	4.51
SSSI	Pamber Forest and Silchester Common	341.72
SSSI	River Test	41.86
SSSI	Ron Ward's Meadow with Tadley Pastures	11.51
SSSI	Sidley Wood	11.72
SSSI	Stanford End Mill and River Loddon	1.84
SSSI	West Woodhay Down	0.46

09.3 Priority Habitats within Designated Sites

Table 09D: Extent of Priority habitats within Designated Sites (as at 31st March 2017)

Designated Sites	Combined Hants area (ha)	Combined Hants area (%)	BDBC (ha)	BDBC area (%)	2015/16 BDBC area (ha)	Change area (ha)
Statutory sites combined	38,166	46.7	645	7.5	646	-1
SINC	21,408	26.2	4,246	49.2	4,195	51
Total combined	58,791	71.9	4,855	56.2	4,810	45

Summary:

1. Approx. 56% of Priority habitat in Basingstoke & Deane is within designated sites, a gain of 45ha on last year.

Notes:

- Total Priority habitat in Basingstoke & Deane as at 31st March 2017 = 4,855ha.
- The area totals for 'Total combined' designated sites do not equal the sum of the 'statutory sites combined' and 'SINC' figures for each district and the total for Hampshire because there is a small overlap between statutory designated sites and SINC's (where different features are cited). In this case, the LNRs.

Sharing information about Hampshire's wildlife

The Hampshire Biodiversity Information Centre Partnership includes local authorities, government agencies, wildlife charities and biological recording groups.

09.4 Condition of Sites of Special Scientific Interest (SSSIs)

Table 09E: Conditions of Sites of Special Scientific Interest (SSSIs) (as at 31st March 2017)

Condition	Combined Hants area (ha)	Combined Hants area (%)	BDBC area (ha)	BDBC area (%)	2015/16 BDBC area (ha)	Change in area (ha)
Favourable	21,679.83	42.9	279.36	3.5	209.80	69.56
Unfavourable Recovering	26,822.82	53.1	491.71	6.1	561.27	-69.56
Unfavourable no Change	1,395.15	2.8	32.46	0.4	32.46	0.00
Unfavourable Declining	638.31	1.3	2.87	0.0	2.87	0.00
Part Destroyed	6.34	0.0				
Destroyed	17.44	0.0				
Grand Total	50,559.88	100.0	806.39	10.0	806.39	0.00

Notes:

- Nearly 70ha has moved from unfavourable recovering to favourable condition.
- Although data has been provided by Natural England the total amount of SSSI may differ from NE figures because NE do not always assign a portion of an SSSI to the correct District where the majority of that SSSI occurs within another District, whereas HBIC are able to clip the SSSI management units directly to the District boundaries.

09.5 SINC changes observed and recorded

Table 09F: Extent of changes to SINCS observed and recorded between 1st April 2016 and 31st March 2017

SINCS	Hants sites (no)	Hants sites (area)	BDBC sites (no)	BDBC sites (area)
Total sites (2015/16)	4,068	36,037.11	797	6,180.97
New Sites	28	107.36	3	21.20
Amended Sites	41	-60.67	3	-1.16
Deleted sites	2	-2.20		
Total sites (2016/17)	4,094	36,081.60	800	6,201.01
Net change	26	44.49	3	20.04
% change in area		0.12		0.32

Notes:

- The site Coachroad Belt West (BD0803, 0.7063 ha) should have been included in the 2015/16 report so the number and area for 2015/16 is retrospectively increased.
- Data is extracted from HBIC SINC layer between 1st April 2016 and 31st March 2017.
- Incorporates the decisions from November 2016 panel.

Table 09G: New SINC approved between 1st April 2016 and 31st March 2017

Site Ref	Site Name	New Size (ha)	New Criteria	Panel date
BD0811	Park Prewett School	0.58	6A	Nov 2016
BD0810	Chineham Business Park / Petty's Brook	2.34	2B	Nov 2016
BD0809	Beggarwood	18.28	2A	Nov 2016

Table 09H: Deleted SINC approved between 1st April 2016 and 31st March 2017

No SINC in Basingstoke and Deane Borough Council were deleted during 2016-2017.

Table 09I: Major amendments to SINC between 1st April 2016 and 31st March 2017

Site Ref	Site Name	Reason	Old Size (ha)	New Size (ha)	Old Criteria	New Criteria
BD0785	Old Down	Habitat Creation/Restoration			6A/6C/7A	2A/6A/6C/7A
BD0754	The Strings	Development (direct or indirect)	2.33	2.14		
BD0506	Sherborne St John Meadows	Lack of management	1.42	0.45	2D/5B	5B

12 Fareham Borough Council

12.1 Priority habitats

Table 12A: Extent of Priority habitats (as at 31st March 2017)

Priority Habitat	Comments on Status	Combined Hants area (ha)	% of Combined Hants area	FBC area (ha)	% of FBC area	2015/16 FBC area (ha)	Change in area (ha)
Grasslands							
Lowland Calcareous Grassland	Comprehensive	2,056	0.53	17	0.22	17	0
Lowland Dry Acid Grassland	Comprehensive. Some overlap with Lowland Heath	3,675	0.95	6	0.08	6	0
Lowland Meadows	Comprehensive. Some overlap with Coastal and Floodplain Grazing Marsh and with Wood-Pasture and Parkland.	1,403	0.36	24	0.31	24	0
Purple Moor Grass and Rush Pastures	Comprehensive. Some overlap with Coastal and Floodplain Grazing Marsh.	1,481	0.38	4	0.05	4	0
Heathlands							
Lowland Heathland	Comprehensive. Some overlap with Lowland Dry Acid Grassland.	11,833	3.05	2	0.03	2	0
Woodland, wood-pasture and parkland							
Lowland Beech and Yew Woodland	Not comprehensive. Ongoing work to distinguish from Lowland Mixed Deciduous Woodland in old surveys.	281	0.07				
Lowland Mixed Deciduous Woodland	Ongoing work as all ancient/ non ancient woodland has been included yet not all has been surveyed for qualifying NVC types.	36,051	9.28	455	5.85	455	0
Wet Woodland	Fairly comprehensive. Areas will exist in LMDW that are not yet surveyed for qualifying types.	2,037	0.52	51	0.66	51	0
Wood-Pasture and Parkland	Not comprehensive. Further work needed to classify this habitat within historic parkland.	5,540	1.43	22	0.28	12	10
Arable, orchards and hedgerows							
Arable Field Margins	Incomplete. Figures only show SINC's on arable land designated for rare arable plant assemblages.	[94]	[0.02]				
Hedgerows	No comprehensive information for Priority hedgerows. All hedgerows mapped as linear features (km).	[16,457]	n/a	[265]	n/a	[265]	[0]
Traditional Orchards	Work to be undertaken to incorporate areas recently identified by PTES under contract to NE.	0	0.00	0.1	0.00	0	0

Priority Habitat	Comments on Status	Combined Hants area (ha)	% of Combined Hants area	FBC area (ha)	% of FBC area	2015/16 FBC area (ha)	Change in area (ha)
Open waters							
Eutrophic Standing Waters	No comprehensive information yet available.	45	0.01				
Rivers	Incomplete data. Approx. figures for Chalk Rivers only calculated from EA's River GIS layer (km).	[634]	n/a	[11]	n/a	[11]	[0]
Wetlands							
Coastal and Floodplain Grazing Marsh	Work on-going to identify all qualifying grazing marsh. Some overlap with Lowland Meadows and with Purple Moor Grass and Rush Pastures.	9,455	2.43	344	4.42	345	-1
Lowland Fens	Comprehensive.	1,899	0.49				
Reedbeds	Not comprehensive.	276	0.07	48.9	0.63	49	0
Coastal							
Coastal saltmarsh	EA data partly verified.	869	0.22	30	0.39	30	0
Coastal Sand Dunes	EA data partly verified.	47	0.01	0.0	0.00	0	0
Coastal Vegetated Shingle	Comprehensive.	223	0.06	11.9	0.15	12	0
Intertidal mudflats	EA data partly verified.	4,418	1.14	270	3.47	270	0
Maritime Cliff and Slopes	Comprehensive.	43	0.01	1.4	0.02	1	0
Saline lagoons	Comprehensive.	55	0.01	1.2	0.02	1	0
Marine							
Seagrass beds	Not comprehensive. Separate HWT data available.	49	0.01				
Total		81,736	21.04	1,289	16.56	1,279	10

Summary: An additional 10ha of wood pasture/parkland has been added due to interpretation of new survey at Holly Hill Woodland Park which is already lowland mixed deciduous woodland and has had wood pasture/parkland added as an historic land use/management code.

Notes:

1. The Hampshire and district totals of Priority habitat are the sum of the individual Priority habitat types (excluding Arable Field Margins, Hedgerows and Rivers). This is not the total area of land covered by Priority habitat within Hampshire and each district because some Priority habitat types overlap and hence are double counted (e.g. Coastal and Floodplain Grazing Marsh may overlap Lowland Meadows or Purple Moor Grass and Rush Pastures).
2. Because the total area of Priority habitat may include areas when habitats overlap the % of the district area covered by Priority habitat may be slightly over-exaggerated.
3. Values of 0 or 0.0 in habitat per district/unitary authority mean the habitat was found, but the area is smaller than 0.5ha or 0.05ha). Empty fields mean no habitat yet mapped
4. Minor changes in area might not always reflect real change, but are results of a rounding of figures.

Sharing information about Hampshire's wildlife

The Hampshire Biodiversity Information Centre Partnership includes local authorities, government agencies, wildlife charities and biological recording groups.

12.2 Nature Conservation Designations

Table 12B: Extent of Nature Conservation Designations (as at 31st March 2017)

Designation	Combined Hants sites (no)	Combined Hants area (ha)	Combined Hants area (%)	FBC sites (no)	FBC area (ha)	FBC area (%)	2015/16 FBC area (ha)	Change (ha)
LNR	66	2,370	1	6	418	5.38	418	0
NNR	11	2,173	1	1	120	1.54	120	0
RAMSAR	6	36,993	10	2	540	6.95	540	0
SAC	13	37,091	10	1	195	2.51	195	0
SPA	10	41,797	11	2	527	6.77	527	0
SSSI	131	50,559	13	6	563	7.24	563	0
Stat Sites Combined	237	51,346	13	18	749	9.62	749	0
SINC	4,094	36,082	9	110	610	7.84	611	0

Summary:

1. There were no changes to statutory sites during 2016/17.
2. Although one SINC was designated during this period, the amount lost to amendments meant no real change in area.
3. For details of new, amended and deleted SINC's see tables 12G, H & I.

Notes:

1. The areas total for 'Statutory sites combined' may not equal the total for each of the individual statutory site designations because there is often an overlap between statutory designations.

Table 12C: Statutory Designated Sites (as at 31st March 2017)

Designation	Site Name	Area (ha) within district
LNR	Gull Coppice	5.62
LNR	Holly Hill Woodland Park	28.13
LNR	Hook with Warsash	251.37
LNR	Kites Croft	17.04
LNR	Titchfield Haven	92.95
LNR	Warsash Common	23.38
NNR	Titchfield Haven	119.62
Ramsar	Portsmouth Harbour	36.04
Ramsar	Solent & Southampton Water	504.42
SAC	Solent Maritime	195.48
SPA	Portsmouth Harbour	36.04
SPA	Solent & Southampton Water	490.89
SSSI	Downend Chalk Pit	4.36
SSSI	Lee-on-the Solent to Itchen Estuary	344.85
SSSI	Portsdown	6.31
SSSI	Portsmouth Harbour	36.04
SSSI	Titchfield Haven	134.49
SSSI	Upper Hamble Estuary and Woods	37.10

12.3 Priority Habitats within Designated Sites

Table 12D: Extent of Priority habitats within Designated Sites (as at 31st March 2017)

Designated Sites	Combined Hants area (ha)	Combined Hants area (%)	FBC (ha)	FBC area (%)	2015/16 FBC area (ha)	Change area (ha)
Statutory sites combined	38,166	46.7	590	45.8	580	10
SINC	21,408	26.2	404	31.3	395	9
Total combined	58,791	71.9	909	70.5	899	9

Summary:

1. Approx. 70% of Priority habitat in Fareham is within designated sites, a gain of 9ha on last year.

Notes:

1. Total Priority habitat in Fareham as at 31st March 2017 = 909ha.
2. The area totals for 'Total combined' designated sites do not equal the sum of the 'statutory sites combined' and 'SINC' figures for each district and the total for Hampshire because there is a small overlap between statutory designated sites and SINCs (where different features are cited). In this case, there are several LNRs which overlap with SINCs.

12.4 Condition of Sites of Special Scientific Interest (SSSIs)

Table 12E: Conditions of Sites of Special Scientific Interest (SSSIs) (as at 31st March 2017)

Condition	Combined Hants area (ha)	Combined Hants area (%)	FBC area (ha)	FBC area (%)	2015/16 FBC area (ha)	Change in area (ha)
Favourable	21,679.83	42.9	294.82	52.4	294.47	0.34
Unfavourable Recovering	26,822.82	53.1	263.60	46.8	263.80	-0.20
Unfavourable no Change	1,395.15	2.8	0.00	0.0	0.00	0.00
Unfavourable Declining	638.31	1.3	4.73	0.8	4.73	0.00
Part Destroyed	6.34	0.0				
Destroyed	17.44	0.0				
Grand Total	50,559.88	100.0	563.15	100.0	563.00	0.15

Notes:

1. Although data has been provided by Natural England the total amount of SSSI may differ from NE figures because NE do not always assign a portion of an SSSI to the correct District where the majority of that SSSI occurs within another District, whereas HBIC are able to clip the SSSI management units directly to the District boundaries.

12.5 SINC changes observed and recorded

Table 12F: Extent of changes to SINC observed and recorded between 1st April 2016 and 31st March 2017

SINCS	Hants sites (no)	Hants sites (area)	FBC sites (no)	FBC sites (area)
Total sites (2015/16)	4,068	36,037.11	109	610.72
New Sites	28	107.36	1	0.12
Amended Sites	41	-60.67	1	-0.60
Deleted sites	2	-2.20		
Total sites (2016/17)	4,094	36,081.60	110	610.24
Net change	26	44.49	1	-0.48
% change in area		0.12		-0.08

Notes:

1. Data extracted from HBIC SINC layer between 1st April 2016 and 31st March 2017.
2. Incorporates the decisions from November 2016 panel.

Table 12G: New SINC approved between 1st April 2016 and 31st March 2017

Site Ref	Site Name	New Size (ha)	New Criteria	Panel date
FA0112	Burridge Recreation Ground Pond	0.12	5A/6A	Nov 2016

Table 12H: Deleted SINC approved between 1st April 2016 and 31st March 2017

No SINC in Fareham Borough Council were deleted during 2016-2017.

Table 12I: Major amendments to SINC between 1st April 2016 and 31st March 2017

Site Ref	Site Name	Reason	Old Size (ha)	New Size (ha)	Old Criteria	New Criteria
FA0092	Urchins Copse	Data Correction/Reinterpretation	1.61	1.01	4A/6A	2B/6A

13 Gosport Borough Council

13.1 Priority habitats

Table 13A: Extent of Priority habitats (as at 31st March 2017)

Priority Habitat	Comments on Status	Combined Hants area (ha)	% of Combined Hants area	GBC area (ha)	% of GBC area	2015/16 GBC area (ha)	Change in area (ha)
Grasslands							
Lowland Calcareous Grassland	Comprehensive	2,056	0.53				
Lowland Dry Acid Grassland	Comprehensive. Some overlap with Lowland Heath	3,675	0.95	9	0.33	9	0
Lowland Meadows	Comprehensive. Some overlap with Coastal and Floodplain Grazing Marsh and with Wood-Pasture and Parkland.	1,403	0.36	12	0.44	12	0
Purple Moor Grass and Rush Pastures	Comprehensive. Some overlap with Coastal and Floodplain Grazing Marsh.	1,481	0.38	1	0.04	1	0
Heathlands							
Lowland Heathland	Comprehensive. Some overlap with Lowland Dry Acid Grassland.	11,833	3.05	4	0.15	4	0
Woodland, wood-pasture and parkland							
Lowland Beech and Yew Woodland	Not comprehensive. Ongoing work to distinguish from Lowland Mixed Deciduous Woodland in old surveys.	281	0.07				
Lowland Mixed Deciduous Woodland	Ongoing work as all ancient/ non ancient woodland has been included yet not all has been surveyed for qualifying NVC types.	36,051	9.28	77	2.80	82	-5
Wet Woodland	Fairly comprehensive. Areas will exist in LMDW that are not yet surveyed for qualifying types.	2,037	0.52	21	0.76	19	2
Wood-Pasture and Parkland	Not comprehensive. Further work needed to classify this habitat within historic parkland.	5,540	1.43	14	0.51	2	12
Arable, orchards and hedgerows							
Arable Field Margins	Incomplete. Figures only show SINC's on arable land designated for rare arable plants.	[94]	[0.02]				
Hedgerows	No comprehensive information for Priority hedgerows. All hedgerows mapped as linear features (km).	[16,457]	n/a	[25]	n/a	[25]	[0]
Traditional Orchards	Work to be undertaken to incorporate areas recently identified by PTES under contract to NE.	0	0.00				

Priority Habitat	Comments on Status	Combined Hants area (ha)	% of Combined Hants area	GBC area (ha)	% of GBC area	2015/16 GBC area (ha)	Change in area (ha)
Open waters							
Eutrophic Standing Waters	No comprehensive information yet available.	45	0.01	1.9	0.07	2	0
Rivers	Incomplete data. Approx. figures for Chalk Rivers only calculated from EA's River GIS layer (km).	[629]	n/a				
Wetlands							
Coastal and Floodplain Grazing Marsh	On-going work to identify all qualifying grazing marsh. Some overlap with Lowland Meadows and with Purple Moor Grass and Rush Pastures.	9,455	2.43	59	2.15	72	-13
Lowland Fens	Comprehensive.	1,899	0.49	0	0.00	0	0
Reedbeds	Not comprehensive.	276	0.07	14.4	0.52	17	-3
Coastal							
Coastal saltmarsh	EA data partly verified.	869	0.22	28	1.02	28	0
Coastal Sand Dunes	EA data partly verified.	47	0.01	0.4	0.01	0	0
Coastal Vegetated Shingle	Comprehensive.	223	0.06	62.6	2.28	63	0
Intertidal mudflats	EA data partly verified.	4,418	1.14	111	4.04	111	0
Maritime Cliff and Slopes	Comprehensive.	43	0.01				
Saline lagoons	Comprehensive.	55	0.01	9.1	0.33	9	0
Marine							
Seagrass beds	Not comprehensive. Separate HWT data available.	49	0.01				
Total		81,736	21.04	424	15.43	431	-7

Summary: Loss of reed bed due to reclassification to swamp or transitional wet woodland. Additional 12 ha of wood pasture/parkland added to lowland mixed deciduous woodland at the Wildgrounds – should have been classified as such a long time ago. Coastal/floodplain grazing marsh 'lost' due to correct reclassification.

Notes:

1. The Hampshire and district totals of Priority habitat are the sum of the individual Priority habitat types (excluding Arable Field Margins, Hedgerows and Rivers). This is not the total area of land covered by Priority habitat within Hampshire and each district because some Priority habitat types overlap and hence are double counted (e.g. Coastal and Floodplain Grazing Marsh may overlap Lowland Meadows or Purple Moor Grass and Rush Pastures).
2. Because the total area of Priority habitat may include areas when habitats overlap the % of the district area covered by Priority habitat may be slightly over-exaggerated.
3. Values of 0 or 0.0 in habitat per district/unitary authority mean the habitat was found, but the area is smaller than 0.5ha or 0.05ha). Empty fields means no habitat has yet been mapped
4. Minor changes in area might not always reflect real change, but are results of a rounding of figures.

13.2 Nature Conservation Designations

Table 13B: Extent of Nature Conservation Designations (as at 31st March 2017)

Designation	Combined Hants sites (no)	Combined Hants area (ha)	Combined Hants area (%)	GBC sites (no)	GBC area (ha)	GBC area (%)	2015/16 GBC area (ha)	Change (ha)
LNR	66	2,370	1	2	40	1.45	40	0
NNR	11	2,173	1					
RAMSAR	6	36,993	10	2	165	5.99	165	0
SAC	13	37,091	10	1	4	0.15	4	0
SPA	10	41,797	11	1	161	5.84	161	0
SSSI	131	50,559	13	5	265	9.64	265	0
Stat Sites Combined	237	51,346	13	11	277	10.08	277	0
SINC	4,094	36,082	9	37	368	13.39	368	0

Summary:

1. There were no changes to statutory sites during 2016/17.
2. For details of any new, amended and deleted SINCs see tables 13G, H & I.

Notes:

1. The areas total for 'Statutory sites combined' may not equal the total for each of the individual statutory site designations because there is often an overlap between statutory designations.

Table 13C: Statutory Designated Sites (as at 31st March 2017)

Designation	Site Name	Area (ha) within district
LNR	The Wild Grounds	28.41
LNR	West of the River Alver	11.55
Ramsar	Portsmouth Harbour	160.68
Ramsar	Solent & Southampton Water	4.06
SAC	Solent & Isle of Wight Lagoons	4.06
SPA	Portsmouth Harbour	160.68
SSSI	Browdown	65.76
SSSI	Gilkicker Lagoon	4.06
SSSI	Lee-on-the Solent to Itchen Estuary	2.10
SSSI	Portsmouth Harbour	165.14
SSSI	The Wild Grounds	28.16

13.3 Priority Habitats within Designated Sites

Table 13D: Extent of Priority habitats within Designated Sites (as at 31st March 2017)

Designated Sites	Combined Hants area (ha)	Combined Hants area (%)	GBC (ha)	GBC area (%)	2015/16 GBC area (ha)	Change area (ha)
Statutory sites combined	38,166	46.7	225	53.0	217	8
SINC	21,408	26.2	146	34.5	150	-4
Total combined	58,791	71.9	364	85.7	360	4

Summary:

1. Approx. 86% of Priority habitat in Gosport District is within designated sites, a gain of 4ha on last year.

Notes:

1. Total Priority habitat in Gosport District as at 31st March 2017 = 364ha.
2. The area totals for 'Total combined' designated sites do not equal the sum of the 'statutory sites combined' and 'SINC' figures for each district and the total for Hampshire because there is a small overlap between statutory designated sites and SINCs (where different features are cited). In this case, there the Alver Valley LNRs overlaps with several SINCs.

13.4 Condition of Sites of Special Scientific Interest (SSSIs)

Table 13E: Conditions of Sites of Special Scientific Interest (SSSIs) (as at 31st March 2017)

Condition	Combined Hants area (ha)	Combined Hants area (%)	GBC area (ha)	GBC area (%)	2015/16 GBC area (ha)	Change in area (ha)
Favourable	21,679.83	42.9	85.63	32.3	85.63	0.00
Unfavourable Recovering	26,822.82	53.1	171.08	64.5	171.08	0.00
Unfavourable no Change	1,395.15	2.8	2.10	0.8	2.10	0.00
Unfavourable Declining	638.31	1.3	1.95	0.7	1.95	0.00
Part Destroyed	6.34	0.0				
Destroyed	17.44	0.0	4.46	1.7	4.46	0.00
Grand Total	50,559.88	100.0	265.23	100.0	265.23	0.00

Notes:

1. Although data has been provided by Natural England the total amount of SSSI may differ from NE figures because NE do not always assign a portion of an SSSI to the correct District where the majority of that SSSI occurs within another District, whereas HBIC are able to clip the SSSI management units directly to the District boundaries.

13.5 SINC changes observed and recorded

Table 13F: Extent of changes to SINC observed and recorded between 1st April 2016 and 31st March 2017

SINCS	Hants sites (no)	Hants sites (area)	GBC sites (no)	GBC sites (area)
Total sites (2015/16)	4,068	36,037.11	37	368.36
New Sites	28	107.36		
Amended Sites	41	-60.67	1	0.00
Deleted sites	2	-2.20		
Total sites (2016/17)	4,094	36,081.60	37	368.36
Net change	26	44.49		0.00
% change in area		0.12		0.00

Notes:

1. Data was extracted from HBIC SINC layer between 1st April 2016 and 31st March 2017.
2. Incorporates the decisions from November 2016 panel. See notes below

Table 13G: New SINCS approved between 1st April 2016 and 31st March 2017

No new SINCS in Gosport Borough Council were approved during 2016-2017.

Table 13H: Deleted SINCS approved between 1st April 2016 and 31st March 2017

No SINCS in Gosport Borough Council were deleted during 2016-2017.

Table 13I: Major amendments to SINCS between 1st April 2016 and 31st March 2017

Site Ref	Site Name	Reason	Old Size (ha)	New Size (ha)	Old Criteria	New Criteria
GO0007	West of the River Alver	Data Correction/Reinterpretation			2A/5B/6A	1Cii/1D/5B/6A

15 Havant Borough Council

15.1 Priority habitats

Table 15A: Extent of Priority habitats (as at 31st March 2017)

Priority Habitat	Comments on Status	Combined Hants area (ha)	% of Combined Hants area	HVBC area (ha)	% of HVBC area	2015/16 HVBC area (ha)	Change in area (ha)
Grasslands							
Lowland Calcareous Grassland	Comprehensive	2,056	0.53	5	0.06	5	0
Lowland Dry Acid Grassland	Comprehensive. Some overlap with Lowland Heath	3,675	0.95	21	0.27	21	0
Lowland Meadows	Comprehensive. Some overlap with Coastal and Floodplain Grazing Marsh and with Wood-Pasture and Parkland.	1,403	0.36	32	0.40	55	-23
Purple Moor Grass and Rush Pastures	Comprehensive. Some overlap with Coastal and Floodplain Grazing Marsh.	1,481	0.38	5	0.06	5	0
Heathlands							
Lowland Heathland	Comprehensive. Some overlap with Lowland Dry Acid Grassland.	11,833	3.05	1	0.01	1	0
Woodland, wood-pasture and parkland							
Lowland Beech and Yew Woodland	Not comprehensive. Ongoing work to distinguish from Lowland Mixed Deciduous Woodland in old surveys.	281	0.07				
Lowland Mixed Deciduous Woodland	Ongoing work as all ancient/ non ancient woodland has been included yet not all has been surveyed for qualifying NVC types.	36,051	9.28	181	2.29	183	-2
Wet Woodland	Fairly comprehensive. Areas will exist in LMDW that are not yet surveyed for qualifying types.	2,037	0.52	37	0.47	37	0
Wood-Pasture and Parkland	Not comprehensive. Further work needed to classify this habitat within historic parkland.	5,540	1.43	15	0.19	15	0
Arable, orchards and hedgerows							
Arable Field Margins	Incomplete. Figures only show SINC's on arable land designated for rare arable plants.	[94]	[0.02]				
Hedgerows	No comprehensive information for Priority hedgerows. All hedgerows mapped as linear features (km).	[16,457]	n/a	[200]	n/a	[200]	[0]
Traditional Orchards	Work to be undertaken to incorporate areas recently identified by PTES under contract to NE.	0	0.00				

Priority Habitat	Comments on Status	Combined Hants area (ha)	% of Combined Hants area	HVBC area (ha)	% of HVBC area	2015/16 HVBC area (ha)	Change in area (ha)
Open waters							
Eutrophic Standing Waters	No comprehensive information yet available.	45	0.01				
Rivers	Incomplete data. Approx. figures for Chalk Rivers only calculated from EA's River GIS layer (km).	[634]	n/a				
Wetlands							
Coastal and Floodplain Grazing Marsh	Work on-going to identify all qualifying grazing marsh. Some overlap with Lowland Meadows and with Purple Moor Grass and Rush Pastures.	9,455	2.43	162	2.05	178	-16
Lowland Fens	Comprehensive.	1,899	0.49				
Reedbeds	Not comprehensive.	276	0.07	1.8	0.02	2	0
Coastal							
Coastal saltmarsh	EA data partly verified.	869	0.22	209	2.64	209	0
Coastal Sand Dunes	EA data partly verified.	47	0.01	39.8	0.50	40	0
Coastal Vegetated Shingle	Comprehensive.	223	0.06	47.2	0.60	47	0
Intertidal mudflats	EA data partly verified.	4,418	1.14	1,380	17.45	1,380	0
Maritime Cliff and Slopes	Comprehensive.	43	0.01	0.8	0.01	1	0
Saline lagoons	Comprehensive.	55	0.01	5.8	0.07	6	0
Marine							
Seagrass beds	Not comprehensive. Separate HWT data available.	49	0.01	45.6	0.58	46	0
Total		81,736	21.04	2,189	27.67	2,231	-42

Summary: Main losses were; lowland meadow where some of it had been incorrectly mapped when actually arable; and floodplain grazing marsh incorrectly mapped in some urban areas

Notes:

1. The Hampshire and district totals of Priority habitat are the sum of the individual Priority habitat types (excluding Arable Field Margins, Hedgerows and Rivers). This is not the total area of land covered by Priority habitat within Hampshire and each district because some Priority habitat types overlap and hence are double counted (e.g. Coastal and Floodplain Grazing Marsh may overlap Lowland Meadows or Purple Moor Grass and Rush Pastures).
2. Because the total area of Priority habitat may include areas when habitats overlap the % of the district area covered by Priority habitat may be slightly over-exaggerated.
3. Values of 0 or 0.0 in habitat per district/unitary authority mean the habitat was found, but the area is smaller than 0.5ha or 0.05ha). Empty fields mean the habitat has not yet been mapped or not found.
4. Minor changes in area might not always reflect real change, but are results of a rounding of figures.

15.2 Nature Conservation Designations

Table 15B: Extent of Nature Conservation Designations (as at 31st March 2017)

Designation	Combined Hants sites (no)	Combined Hants area (ha)	Combined Hants area (%)	HVBC sites (no)	HVBC area (ha)	HVBC area (%)	2015/16 HVBC area (ha)	Change (ha)
LNR	66	2,370	1	8	218	2.75	218	0
NNR	11	2,173	1					
RAMSAR	6	36,993	10	1	2,430	30.72	2,430	0
SAC	13	37,091	10	1	2,269	28.69	2,270	0
SPA	10	41,797	11	1	2,430	30.72	2,430	0
SSSI	131	50,559	13	4	2,677	33.84	2,677	0
Stat Sites Combined	237	51,346	13	15	2,716	34.34	2,716	0
SINC	4,094	36,082	9	144	882	11.15	886	-4

Summary:

1. There were no changes to statutory sites during 2016/17.
2. For details of any new, amended and deleted SINCs see tables 15G, H & I.

Notes:

1. The areas total for 'Statutory sites combined' may not equal the total for each of the individual statutory site designations because there is often an overlap between statutory designations.

Table 15C: Statutory Designated Sites (as at 31st March 2017)

Designation	Site Name	Area (ha) within district
LNR	Brook Meadow (Emsworth)	3.35
LNR	Farlington Marshes	1.26
LNR	Gutner Point	68.99
LNR	Hayling Billy	42.02
LNR	Hazleton Common LNR	1.39
LNR	Sandy Point	18.32
LNR	The Kench, Hayling Island	6.04
LNR	West Hayling	76.23
Ramsar	Chichester and Langstone Harbours	2,429.96
SAC	Solent Maritime	2,269.34
SPA	Chichester and Langstone Harbours	2,429.96
SSSI	Chichester Harbour	1,005.77
SSSI	Langstone Harbour	1,424.19
SSSI	Sinah Common	242.75
SSSI	Warblington Meadow	3.87

15.3 Priority Habitats within Designated Sites

Table 15D: Extent of Priority habitats within Designated Sites (as at 31st March 2017)

Designated Sites	Combined Hants area (ha)	Combined Hants area (%)	HVBC (ha)	HVBC area (%)	2015/16 HVBC area (ha)	Change area (ha)
Statutory sites combined	38,166	46.7	1,775	81.1	1,774	
SINC	21,408	26.2	308	14.1	331	-23
Total combined	58,791	71.9	2,071	94.6	2,094	-22

Summary:

1. Approx. 95% of Priority habitat in Havant is within designated sites up 1% on last year

Notes:

1. Total Priority habitat in Havant as at 31st March 2017 = 2,071ha.
2. The area totals for 'Total combined' designated sites do not equal the sum of the 'statutory sites combined' and 'SINC' figures for each district and the total for Hampshire because there is a small overlap between statutory designated sites and SINCs (where different features are cited). In this case, there are many LNRs which overlap with SINCs.

15.4 Condition of Sites of Special Scientific Interest (SSSIs)

Table 15E: Conditions of Sites of Special Scientific Interest (SSSIs) (as at 31st March 2017)

Condition	Combined Hants area (ha)	Combined Hants area (%)	HVBC area (ha)	HVBC area (%)	2015/16 HVBC area (ha)	Change in area (ha)
Favourable	21,679.83	42.9	110.12	4.1	109.98	0.14
Unfavourable Recovering	26,822.82	53.1	2,566.46	95.9	2,566.96	-0.50
Unfavourable no Change	1,395.15	2.8				
Unfavourable Declining	638.31	1.3				
Part Destroyed	6.34	0.0				
Destroyed	17.44	0.0				
Grand Total	50,559.88	100.0	2,676.58	100.0	2,676.94	-0.36

Notes:

1. Although data has been provided by Natural England the total amount of SSSI may differ from NE figures because NE do not always assign a portion of an SSSI to the correct District where the majority of that SSSI occurs within another District, whereas HBIC are able to clip the SSSI management units directly to the District boundaries.

15.5 SINC changes observed and recorded

Table 15F: Extent of changes to SINC observed and recorded between 1st April 2016 and 31st March 2017

SINCS	Hants sites (no)	Hants sites (area)	HVBC sites (no)	HVBC sites (area)
Total sites (2015/16)	4,068	36,037.11	144	885.96
New Sites	28	107.36		
Amended Sites	41	-60.67	1	-4.21
Deleted sites	2	-2.20		
Total sites (2016/17)	4,094	36,081.60	144	881.75
Net change	26	44.49		-4.21
% change in area		0.12		-0.48

Notes:

1. The number of SINCS reported in the 2015/16 report was wrong. it was 144 not 145
2. Data was extracted from HBIC SINC layer between 1st April 2016 and 31st March 2017.
2. Incorporates the decisions from November 2016 panel.

Table 15G: New SINCS approved between 1st April 2016 and 31st March 2017

No new SINCS in Havant Borough Council were approved during 2016-2017.

Table 15H: Deleted SINCS approved between 1st April 2016 and 31st March 2017

No SINCS in Havant Borough Council were deleted during 2016-2017.

Table 15I: Major amendments to SINCS between 1st April 2016 and 31st March 2017

Site Ref	Site Name	Reason	Old Size (ha)	New Size (ha)	Old Criteria	New Criteria
HV0027	Fields off Havant Road	Development (direct or indirect)	12.32	8.11		