

ILC

Independent
Living
Conference

Celebrating 40 years of
Independent Living in Hampshire

Welcome



[watch on YouTube](#)

Resource Pack Contents



- Biographies from our Keynote speakers
- Conference ground rules
- Joining instructions and MS Teams guidance
- Accessible Housing
- Health and Wellbeing
- Inclusive Education and skills
- Employment
- Peer support
- Personal assistants
- Transport
- Cost of Living
- Technology
- Signposting and useful websites
- Workshop slides

How to use this resource pack



- All sections in the pack are colour coded:
 - **Blue** – Practical information and help for the conference
 - **Pink** – Topical information and signposting
 - **Yellow** – Biographies
- We have [hyperlinked](#) to a lot of useful information – click on the links and you will be taken out of this document to a relevant webpage. Some of the conference workshops used slides, we have included these at the end of the pack for reference.
- The pack is designed to be accessible. If you need **Easy Read**, look out for this symbol:



Disclaimer

This resource pack contains generalised information and signposting to resources on Independent Living related topics. Accordingly, the content is not intended to be taken as advice on any matter and should not be construed as such; it is for general information purposes only. Although every effort has been made to ensure the accuracy of the information within the pack at the time of publication (November 2023), Hampshire County Council and the Personalisation Expert Panel (PEP) do not accept any responsibility for the accuracy of the information within this document. Links to third party websites are provided for the convenience of the reader and neither the County Council nor PEP is responsible for their content. Their inclusion in this pack does not amount to a recommendation or endorsement by the County Council or PEP.

Conference Ground Rules



- Please be respectful of your fellow attendees and remain mindful of your behaviour and language.
- Sit comfortably in a suitable environment.
- Please consider putting your phone on silent to avoid distractions.
- Please do not smoke or vape during the session.
- Please do not share any personal details or information within the session.
- Be mindful that the chat is visible to all attendees and is only to be used for appropriate questions.
- Hampshire County Council colleagues are on hand to support throughout the workshop.

Useful conference links



- [How to join the Conference](#)
- [Registration Form](#)
- [Feedback - After the Conference](#)

How to use Teams



- How to join a meeting – watch this video

[How to join a Microsoft Teams meeting | Microsoft - YouTube](#)

- More videos about Teams here

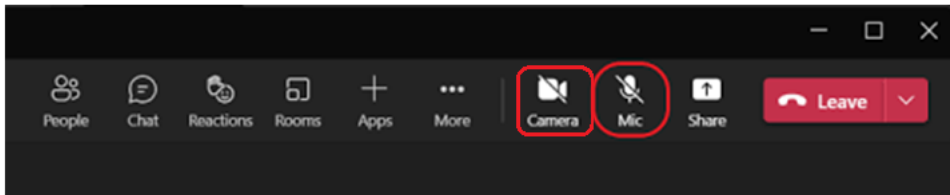
[Microsoft Teams - YouTube](#)

How to use Teams

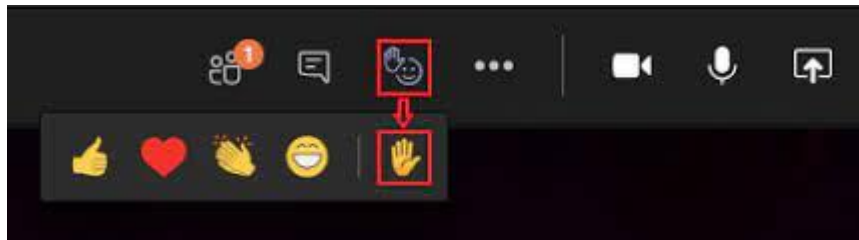


During workshops, please ensure you remain on **mute** and with your **camera off**.

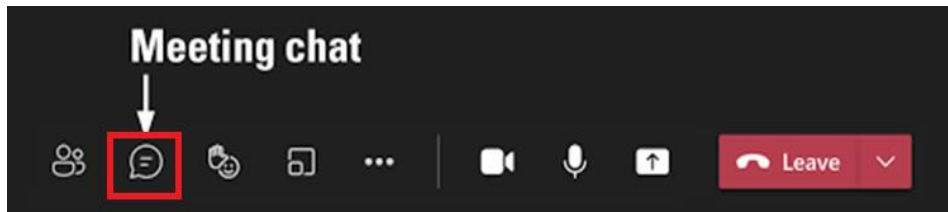
To ask a question or make a comment, please 'unmute' yourself. It is your choice whether you wish to turn your camera on.



To ask a question or make a comment, please use the **'Hand Up'** function in teams to be invited to talk.



Alternatively, type your question or make a comment, in the meeting **chat function**.



What is Independent Living



Source:

[What is Independent Living - A Personal Definition | Independent Living Institute](#)

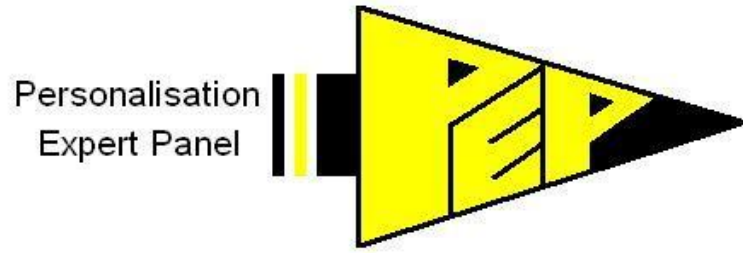
- Independent Living is a philosophy and a movement of people with disabilities who work for self-determination, equal opportunities and self-respect
- Independent Living does not mean that we want to do everything by ourselves, or do not need anybody, or that we want to live in isolation
- Independent Living means that we demand the same choices and control in our every-day lives that our non-disabled family and friends take for granted, like using the same bus and working in jobs that are in line with our education and interests
- Since we are the best experts on our needs, we need to show the solutions we want
- We need to be in charge of our lives, think and speak for ourselves - just as everybody else does

What is Independent Living



- [History of Independent Living in Hampshire by John Evans](#)
- Watch John Evans' film 'My Fight to Freedom' about his journey to independent living on [YouTube](#)
- [Article 19 - Living independently and being included in the community](#)
- [Independent Living | Disability Rights UK](#)
- [Definitions of Independent Living](#)

Personalisation Expert Panel (PEP)



**Experts by Experience
have a wealth of lived
experience using
services as Disabled
People and Carers**

- Hampshire Personalisation Expert Panel (PEP) started in 2009
- PEP brings together a range of 'Experts by Experience'
- Members are often connected to wider networks. Members of PEP are committed to the reform of adult social care and health care
- PEP was set up to look at important issues and to work with Hampshire's Adults' Health and Care Department by scrutinising its policies and approach
- The group currently meet online every month



You can
find out
more here:

call: 023 8020 2625

email: info@spectrumcil.co.uk

[PEP information](#)

Rachel Harrison



Rachel Harrison
PEP Co-Chair

Rachel Harrison is one of the Co Chairs of PEP. Rachel also Co Chairs the Direct Payments Framework Board and sits on the County Council's Care Governance Board.

Rachel applies her knowledge of co-production, policy and strategy.

Rachel has personal experience of support needs and employing personal assistants who enable her to live independently.

Rachel uses her experience to improve services and empower others.

Iain Speed



Iain Speed
PEP Co-Chair,
Founder and
Managing Director
of All Inclusive CIC

Iain is one of the Co-Chairs of PEP. Iain has cerebral palsy and has extensive business and managerial experience which he brings to his role.

Iain has been working in the Disability Sector for over 25 years and has experience of Senior Management and Directorship positions in local and national organisations. He has a strong self-belief in his personal philosophy around disability and have utilised his years of experience in management to establish a Community Interest Company with the objective of empowering the disability agenda.

The core ethos is to provide the tools that will increase an organisation's delivery of disabled customer service by removing physical barriers and assumptions.

Iain is passionate about working in co-production, advocacy and protecting the human rights of all disabled people, I have a special interest in people with learning disabilities and those with speech and/or hearing impairments.

Iain married to someone with a severe hearing impairment and two years ago his wife, Sue, got a hearing dog called Ember. When Ember isn't "working", as a family they enjoy taking Ember on rambles. Iain is also a keen gardener who loves growing vegetables and fruit, as well as a rugby enthusiast and goes to live matches whenever possible.

Hampshire County Council



Hampshire County Council is responsible for a wide range of services across the whole county

Delivering services to the people of Hampshire in an open and cost-effective way

- Hampshire County Council's **Adults' Health and Care** aims to help people stay independent, safe and well so they can live the lives they want to
- We support people in Hampshire who have eligible care needs. This includes people with disabilities or neurodiversity, mental health issues, as well as the people who care for them
- Hampshire County Council offers several different services you can find out more on the link below
- [Adults' Health and Care Strategy 2023](#) - Our vision for health and care - a five year journey



You can find out more here:



[Adults Health and Care Hampshire County Council](#)

[Who can get help from Adult Services](#)

Graham Allen



Graham Allen
Deputy Chief Executive
and Director for
Adults' Health and
Care for Hampshire
County Council

Graham is the Deputy Chief Executive and Director for Adults' Health and Care at Hampshire County Council.

He was appointed in May 2016, having previously been an Assistant Director within Adult Services at Hampshire County Council from January 2015.

Graham qualified as a social worker in 1994 and has held a variety of practitioner and managerial roles working both in criminal justice and more latterly social care sectors.



You can read
more here:

[Chief officers | About the Council | Hampshire County Council \(hants.gov.uk\)](#)

Keynote Speaker – John Evans OBE



John Evans OBE
Disability Rights
Consultant

John Evans is a Disability Rights consultant, trainer and activist, passionate about co-production, Independent Living and Human Rights.

John was the first person to have an Independent Living package funded by Hampshire County Council in 1983. He has been one of the founders and leaders of the disability movement in the UK and Europe. He was co-founder of Project 81, Hampshire and National Centres for Independent Living and the European Network of Independent Living. He has written and talked widely about disability issues and human rights throughout the UK and Europe.

In 2001 he was awarded an OBE and in 2003, the European Year of Disabled People, the Tuscany Silver Banner Award for his international work.

He is a member of PEP (Personalisation Expert Panel) in Hampshire and on the SCIE (Social Care Institute for Excellence) Co-Production Steering Group.

Keynote Speaker – Dr Anna Severwright



Dr Anna Severwright
Co-convener
Social Care Future

Anna is a qualified doctor, no longer working in clinical practice she now combines her lived experience of disability and social care with her professional expertise, to positively change social care.

She is a convener of the Social Care Future movement which is all about disabled and older people being able to live the lives they want to live.

She has various other roles including being a special advisor to the House of Lords adult social care committee and a commissioner on the Archbishop's Reimagining Care Commission and previously was co-chair of the Coalition for Collaborative Care.



You can read
more here:

<https://socialcarefuture.org.uk/>
socialcarefuture@gmail.com
[@socfuture](#)
[@AnnaSeverwright](#)

Accessible Housing



- Accessible Housing: [Extra Care Housing](#) / [Other housing options](#)
- [Applying for a housing association property](#)
- [Technology in care and support](#) - also [Mobility Equipment](#) and [Adaptations to your home](#)
- [Extra Care housing](#)
- [Shared Lives Scheme](#)
- [Shared Lives](#)
- [Accommodation Choices](#)
- [Extra Care Video](#)



Health and Wellbeing



- [Health and Wellbeing](#)
- [Least Restrictive Practice](#)
- [Older Person Abuse Support - Hourglass](#)
- [Types of Abuse](#)
- [Hampshire Safeguarding Adults Board - Report Concerns](#)
- [Wellbeing - Action for Happiness](#)
- [Activities in Hampshire](#)

Health and Wellbeing



- [NHS England advice](#)
- [Help with your health](#)
- [Health information](#)
- [Get Involved - Hampshire and Isle of Wight Health and Care](#)
- [Have your Say - Hampshire Perspectives](#)

Inclusive Education and skills



- [Inclusive Education, Skills and Employment](#)
- [Supported Internship](#)
- [SEND Employability and Independence Hubs](#)
- [British Association for Supported Employment](#)
- [Hampshire Learns](#)
- [My Life My Way](#)
- [Minstead Trust | Supporting people with learning disabilities](#)
- [Meet the Intern – YouTube](#)

Employment



- [Access to Work: support if you have a disability or health condition](#)
- [Intensive Personalised Employment Support explained](#)
- [Work and Health Programme](#)
- [Job application process | Hampshire County Council](#)
- [Inclusion and Diversity](#)
- [Staff Networks](#)
- [Hampshire County Council Positive Action Statement of Intent](#)



Employment



- [Hampshire County Council Positive Action Statement of Intent](#)
- [Employers for Hampshire Achieves](#)
- [Access to Work](#)
- [Transforming Support - The Health and Disability White Paper](#)
- [Ways into Work](#)
- [Job Centre Plus - Working together with Employers](#)

Peer Support



Peer support is when people use their own experiences to help each other. There are different types of peer support, but they all aim to: bring together people with shared experiences to support each other

- [User Led Organisations](#)
- [NHS England - Peer Support Guide](#)
- [Social Care Institute for Excellence](#)
- [National Voices - Peer Support](#)
- [Disabled Peoples Voice](#) Peer Support in Hampshire free sign up for newsletter [here](#)
- [From Le Court to Strasbourg: Fighting for Freedom](#)
- [Confident Commissioning](#)

Personal Assistants



A personal assistant for care (PA) is someone who is employed to provide personal and domestic everyday support needed to help people to lead an independent personal and social life at home

- [Personal Assistants](#)
- [Hampshire PA Finder](#)
- [Skills for Care Support for individual employers and Pas](#)
- [Think Local Act Personal](#)

Personal Assistants



- [Integrated Care Board](#)
- [Personal Assistant Care](#)
- [Better Direct Payments: Think Local Act Personal](#)
- [Hampshire Direct Payments](#)
- [Direct Payment Email Subscription](#)

Transport



- [Driving and parking](#)
- [Public & Community Transport](#)
- [Concessions and discounts](#)
- [Safe travel in your wheelchair](#)
- [Travel with confidence](#)



- [Bus Pass information](#)
- [Bus Pass Application](#)
- [Choosing Wheelchair or Scooter](#)

Cost of Living



- [Help with the cost of living | Hampshire County Council \(hants.gov.uk\)](https://www.hants.gov.uk)
- [Cost of Living Payments 2023 to 2024](#)
- [Cost of living crisis ER v2.pdf \(mencap.org.uk\)](https://www.mencap.org.uk)

Technology



- [Technology Enabled Care](#)
- [Hampshire Care Technology](#)
- [Oysta Technology UK Homepage \(oysta-technology.com\)](#)
- [A digital world accessible to all. | AbilityNet](#)
- [Home | Delivering Safe Digital Health | ORCHA - ORCHA \(orchahealth.com\)](#)
- [Assistive aids and technology | RNIB](#)

Further signposting



More Resources

- [Connect2Support Hampshire](#)
- [Hampshire Learning Disability Partnership - Resources](#)
- [Hampshire Autism Partnership Board](#)
- [The Carer's Take a Break Service](#)
- [Your Carer's Assessment](#)
- [Co-Production in Hampshire](#)
- [Hampshire Care Association](#)

Further signposting



More Resources

- [SPECTRUM – Centre for Independent Living](#)
- [Independent Living](#)
- [Co-Production in Hampshire](#)
- [Independent Futures Team](#)
- [Direct Payments: What you need to know](#)
- [Direct Payments: Prepaid Cards Guidance](#)

Workshop slides



Workshop

Health and wellbeing

Accessible Housing

Peer Support

Accessible Transport

Inclusive Education and Employment

Personal Assistants

ILC

Independent
Living
Conference

Celebrating 40 years of
Independent Living in Hampshire

Health and Wellbeing Workshop

12:00 – 13:00

Panellists



- **Lena Samuels** – Chair, Hampshire and Isle of Wight Integrated Care Board
- **Iain Speed** – Co-Chair of Hampshire Personalisation Expert Panel, Managing Director All Inclusive CiC
- **James Lawrence-Parr** - Associate Director, Population Health (Hampshire Place)
- **Alina Mackenzie** – Senior Population Health & Health Inequalities Manager
- **Abbie Twaits** – Public Health, Hampshire County Council

Lena Samuels - Chair - Hampshire and Isle of Wight Integrated Care Board



- Lena began her tenure as Chair of the Hampshire and Isle of Wight Sustainability and Transformation Partnership in January 2019 and subsequently supported the development of the Integrated Care System as Chair.
- Lena began her career as a lecturer in further and higher education and managed a training centre in London for young people at risk of exclusion. Lena has held a number of leadership roles across Hampshire and the Isle of Wight including as a non-executive director with University Hospital Southampton and an associate non-executive director with Isle of Wight NHS Trust. From 2017 to 2022, Lena was Chair of South Central Ambulance Service. She also chairs the NHS South East Regional People Board.
- She currently runs a company which has provided communications and training in leadership, human rights and child protection on behalf of organisations such as the National Crime Agency, UNICEF and UN Women. In addition, Lena is a Deputy Lieutenant at Hampshire Lieutenancy.

James Lawrence-Parr



**Leonard
Cheshire**



- James has worked for 20 years for Leonard Cheshire Disability (locally and nationally) including managing services and developing people-led independent living and enabling services.
- 15 years working for NHS including commissioning (PCT, CCGs and ICB), providers (Southern Health as part of Vanguard), and as part of national programmes (National Hospital & Population Health Management programmes)
- Passions (work): population health and thriving communities
- Passions (home) writing and performing music, cycling (it's my wellbeing). I also volunteer for Search & Rescue

Alina Mackenzie



NHS

Hampshire and Isle of Wight



- Qualified Social Worker and Public Health Practitioner.
- Alina joined HloW ICB November 2022 following career in local government.
- Alina has over ten years' experience in adult social work in area of learning disabilities, autism and mental health.
- Alina is passionate about improving access, experience and outcomes for health and care, particularly for people who find it harder to navigate system pathways.
- Alina is keen to use her skills and values to reduce health inequalities through collaborative working across our patch.

Abbie Twaits



Hampshire
County Council

- Qualified Senior Public Health Practitioner working in the Hampshire team for over 10 years, now specialising in projects supporting older people and adults with disabilities to live longer, healthier lives.
- Vast experience working across all domains of Public Health: Health Improvement, Health Protection, Healthcare Public Health and Academic Public Health.
- Committed to reducing health inequalities through advancing public health initiatives, through innovation, leadership and research.

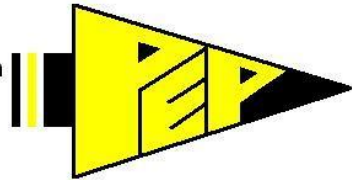
Iain Speed



Iain is one of the Co-Chairs of PEP. Iain has cerebral palsy and has extensive business and managerial experience which he brings to his role.

Iain has been working in the Disability Sector for over 25 years and has experience of Senior Management and Directorship positions in local and national organisations. He has a strong self-belief in his personal philosophy around disability and have utilised his years of experience in management to establish a Community Interest Company with the objective of empowering the disability agenda.

Personalisation
Expert Panel



The core ethos is to provide the tools that will increase an organisation's delivery of disabled customer service by removing physical barriers and assumptions.

Iain is passionate about working in co-production, advocacy and protecting the human rights of all disabled people, I have a special interest in people with learning disabilities and those with speech and/or hearing impairments.

Iain married to someone with a severe hearing impairment and two years ago his wife, Sue, got a hearing dog called Ember. When Ember isn't "working", as a family they enjoy taking Ember on rambles. Iain is also a keen gardener who loves growing vegetables and fruit, as well as a rugby enthusiast and goes to live matches whenever possible.

Agenda

- James:
 - What is the role of the ICB?
 - What are Integrated Care Systems?
- Alina:
 - How are Health Inequalities addressed? Core 20 Plus 5 – what is this? P&I Board - EDI Objectives
- Abbie:
 - What is the role of Public Health?
- Iain:
 - What can disabled people and representative organisations do?
- Lena:
 - How to get more involved – ICS involvement approach
 - Q&A

Integrated Care Board

The purpose of ICBs is to bring partner organisations together to:

1. Improve outcomes in population health and healthcare.
2. Tackle inequalities in outcomes, experience and access.
3. Enhance productivity and value for money.
4. Help the NHS support broader social and economic development.

ICB New Statutory (Legal) Duty to reduce inequalities:

- Each ICB must have regard to the need to: (a) reduce inequalities between persons with respect to their ability to ***access health services*** and (b) reduce inequalities between patients with respect to the ***outcomes achieved for them*** by the provision of health services. There is also a duty to have regard to the ***wider effects of decisions on inequalities***.

Hampshire & Isle of Wight Integrated Care System

ILC

Independent
Living
Conference

Celebrating 40 years of
Independent Living in Hampshire

Hampshire
and
Isle of Wight

SERVING A
POPULATION OF



1.9 MILLION



**ANNUAL BUDGET:
£3.8 BILLION**



**OVER 19,300
BIRTHS ANNUALLY**

77,500



**NHS AND
SOCIAL CARE
STAFF**

**3 ACUTE HOSPITAL
TRUSTS**



**4 HEALTHWATCH
PARTNERS**



**AN ALLIANCE OF
VOLUNTARY AND COMMUNITY
ORGANISATIONS WORKING IN
PARTNERSHIP**

WHO WE ARE:

- 139 GP practices
- Over 200 optometry services
- 42 primary care networks
- Over 200 providers of dental services
- Over 900 suppliers of domiciliary care
- 2 community and mental health trusts
- Over 300 pharmacies

1

**AMBULANCE
SERVICE**



1

**ONE INTEGRATED
TRUST PROVIDING
ACUTE, MENTAL
HEALTH,
COMMUNITY AND
AMBULANCE
SERVICES**



4

**UPPER TIER
LOCAL AUTHORITIES:**



**AND 10 DISTRICT AND
BOROUGH COUNCILS**

Formed on 1 July 2022, replacing the previous Clinical Commissioning Groups (CCGs)

ICS priorities and key areas of focus



ICS interim strategy

The integrated care partnership is responsible for setting the strategy for health and care in Hampshire and Isle of Wight to meet local healthcare, social care and public health needs. We will continue to work with new and existing partners to further develop and deliver our strategy. This interim strategy has been jointly developed by partners and stakeholders, including:



Addressing health inequalities

- Core20PLUS5 - 1 November 2021
- Public Sector Equality Duty & “due regard” – Equality Act 2010
- NHS Long Term Plan 2019 - More NHS action on prevention and health inequalities
 - Chapter 2: smoking, alcohol, obesity, maternity, severe mental illness, learning disability
- HloW Prevention & Inequalities Board
- Configuring data to better understand the issues
- Community insight to allocate resources
- Asset Based Community Development
- Engage and Co-Produce in a different way

REDUCING HEALTHCARE INEQUALITIES

The Core20PLUS5 approach is designed to support Integrated Care Systems to drive targeted action in healthcare inequalities improvement

CORE20
The most deprived 20% of the national population as identified by the Index of Multiple Deprivation



PLUS
ICS-chosen population groups experiencing poorer-than-average health access, experience and/or outcomes, who may not be captured within the Core20 alone and would benefit from a tailored healthcare approach e.g. inclusion health groups



Target population

CORE20 PLUS 5

Key clinical areas of health inequalities

1

2

3

4

5



MATERNITY
ensuring continuity of care for women from Black, Asian and minority ethnic communities and from the most deprived groups



SEVERE MENTAL ILLNESS (SMI)
ensure annual Physical Health Checks for people with SMI to at least, nationally set targets



CHRONIC RESPIRATORY DISEASE
a clear focus on Chronic Obstructive Pulmonary Disease (COPD), driving up uptake of Covid, Flu and Pneumonia vaccines to reduce infective exacerbations and emergency hospital admissions due to those exacerbations



EARLY CANCER DIAGNOSIS
75% of cases diagnosed at stage 1 or 2 by 2028

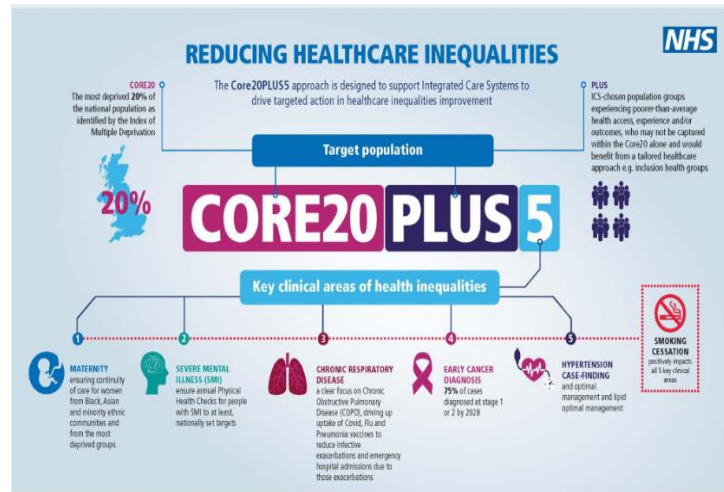


HYPERTENSION CASE-FINDING
and optimal management and lipid optimal management



SMOKING CESSATION
positively impacts all 5 key clinical areas

CORE20PLUS5



HIOW Adult *Plus* Groups

1. Minority ethnic communities most affected by Covid-19
2. People who are homeless
3. People with a learning disability
4. People with a severe mental illness
5. Asylum Seekers, Refugees and children of migrants



HIOW Children and Young People *Plus* Groups

1. Looked after children and Children leaving Care
2. Children experiencing homelessness
3. Children in Gypsy and Traveller communities
4. Children of adults in Core 20 plus 5 groups

Disability – census 2021

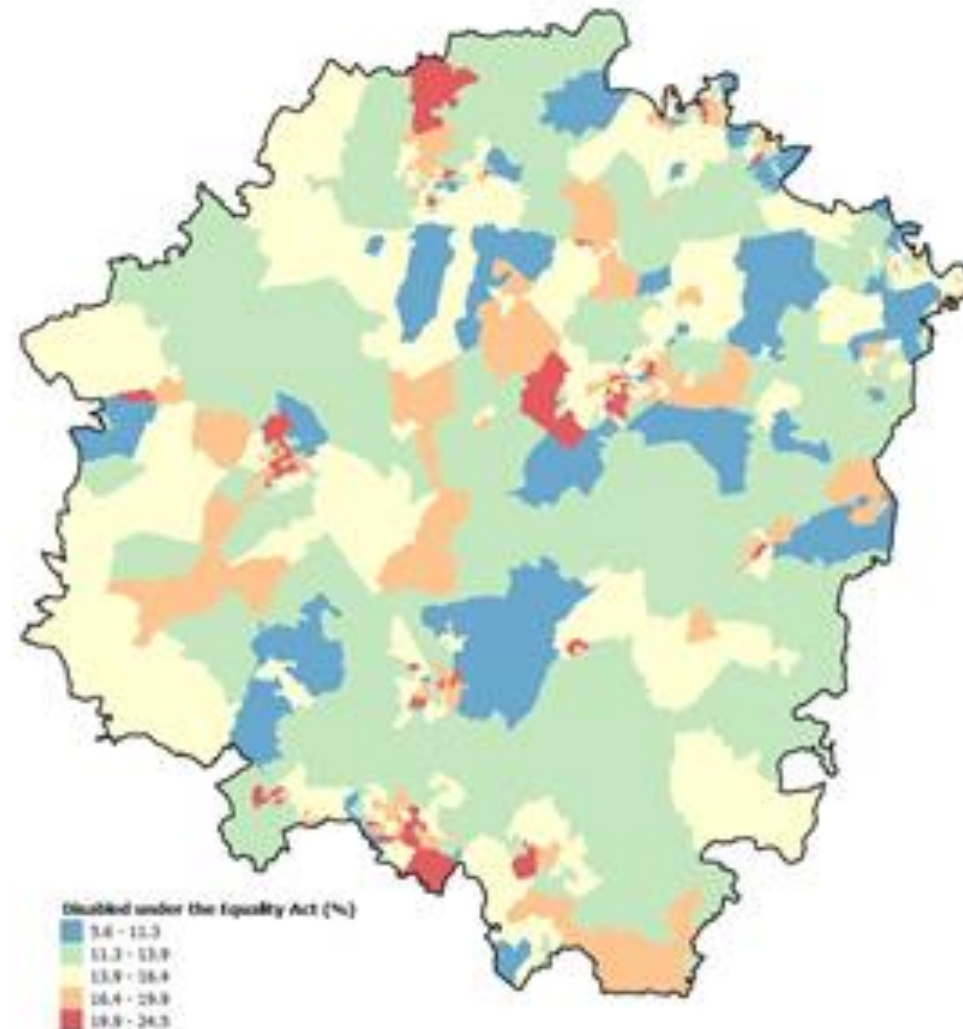
Disability

Data source: 2021 Census at LSOA level

Definition:

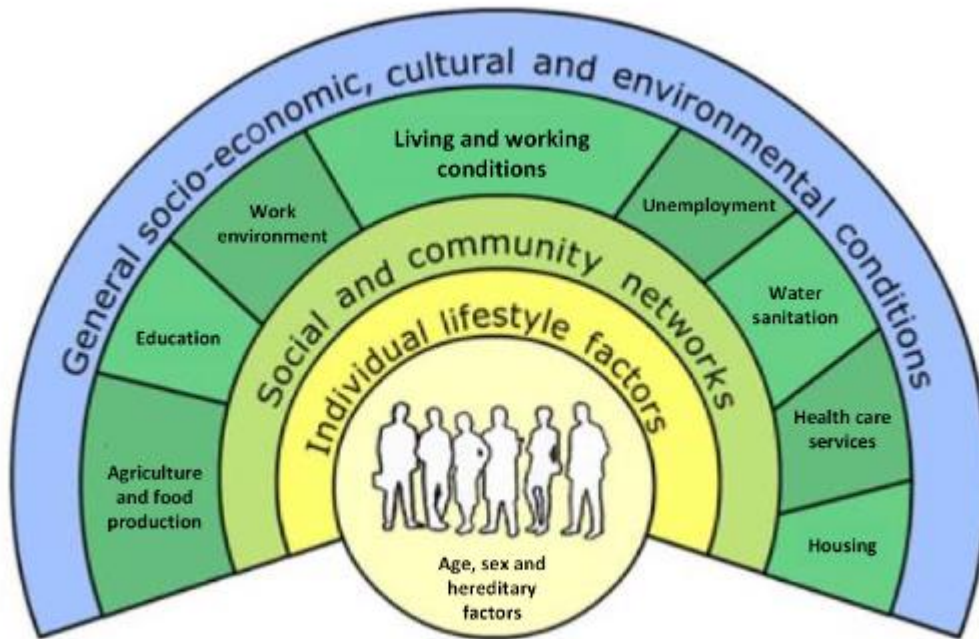
- Disabled under the Equality Act: Day-to-day activities limited a little
- Disabled under the Equality Act: Day-to-day activities limited a lot

Area: Study Area of 543 LSOAs



Health determinants and independent living

The wider determinants of health



Source - Whitehead and Dahlgren, 1991

1. Appropriate and Accessible Information
2. An adequate income
3. Appropriate and accessible health and social care provisions
4. A fully-accessible transport system
5. Full access to the environment
6. Adequate provision of technical aids and equipment
7. Availability of accessible and adapted housing
8. Adequate provision of personal assistance
9. Availability of inclusive education and training
10. Equal opportunities for employment
11. Availability of independent advocacy and self-advocacy
12. Availability of peer counselling

HIOW ICB Annual Report

- Describes ICBs work with people and communities and how ICBs have discharged their public involvement legal duties.
- Reports on how the ICB has discharged its functions in the previous financial year.
- The annual report also needs to **explain how an ICB has discharged** a variety of other **duties**, including duties in relation to improvement in research, **reducing inequalities**.

Demonstration of how the ICB's strategy on working with people and communities is being put into practice

- How activities were designed to reach specific groups, including protected characteristic groups, and **how the voices of people experiencing health inequalities and wider inequalities** were listened to.

Evidence that equality and inclusion principles were considered when working with diverse communities

- Includes examples of what the ICB may be doing to encourage **inclusive involvement** of people and **communities who face health inequalities**.

[QRL ICB Annual Report 2022-23_FINAL_Redacted.pdf](#)
(hantsiowhealthandcare.org.uk)



Hampshire and Isle of Wight

Our

2022/23

Annual Report and Accounts

(01 July 2022 to 31 March 2023)

The role of Public Health

Upper Tier local authorities have a statutory duty to improve health and wellbeing and reduce health inequalities.

We commission mandated services including Sexual and Reproductive Health, Drugs and Alcohol treatment, School Nursing, Health Visiting, the National Childhood Measurement Programme and NHS Health Checks.

We also deliver projects on non-statutory topics because we identify a need through the Joint Strategic Needs Assessment, such as Falls Prevention and Weight Management.

The Local Authority cannot deliver this alone; it can only be delivered by working closely with our partners.



Hampshire
County Council

Hampshire's public health vision

As the public health authority, Hampshire County Council is committed to improving the health of everyone living in Hampshire

To create a healthier Hampshire, we have **two ambitions:**

1

To increase the number of years Hampshire residents can expect to live in good health.



2

To reduce the unfair gap in healthy life years between the most and least healthy.



Healthy Lives

- Children and young people High Impact Areas
- Healthy and independent middle and older age
- Narrowing the gap in outcomes for vulnerable people
- Mental health and wellbeing
- Substance Misuse
- Violence reduction
- Prevention of leading clinical conditions and multi morbidities

Healthy Places & Communities

- Planning and transport policy – supporting active travel and connected communities
- Lower emissions and improved air quality
- Accessible and sustainable town centres and residential developments
- Regeneration and place building
- Making places fit for all life stages and population groups
- Health in educational settings

Healthy People

- Supporting effective screening and vaccination programmes
- Preparedness to respond to public health emergencies
- Other duties e.g. Armed Forces Covenant
- Public Health intelligence and leadership to the NHS

Examples focusing on Independent Living



Live Longer Better



Community Researchers



Increasing uptake of cervical screening



Falls Prevention



Healthy Homes



Spatial Planning



Mental Health and wellbeing

The role of disabled people and disabled people's organisations

ILC Independent Living Conference

Celebrating 40 years of Independent Living in Hampshire



Useful links

- [Integrated Care Partnership](#)
- [Get involved via the ICS webpages](#)
- [The Hampshire and Isle of Wight VCSE Health and Care Alliance](#)

ILC

Independent
Living
Conference

Celebrating 40 years of
Independent Living in Hampshire

Accessible Housing Workshop

12:00 – 13:00

Session running order

1. Welcome

2. Meet the panel

3. Panel presentations

- Extra Care housing – the schemes, the model and how to access Extra Care housing: **Jacqui Evans**, Hampshire County Council Strategic Commissioning Lead – Older Adults Housing
- How to apply for affordable housing: **Amy Hobbs** – Strategic Housing Officer, Basingstoke and Deane Borough Council
- Younger Adults Supported Accommodation explained: **Jenny Dixon**, Hampshire County Council Strategic Commissioning Lead - Younger Adults Accommodation
- Disabled Facilities Grant - the process, **Elizabeth Hawkins** - Eastleigh Borough Council, Senior DFG and Housing Enforcement Officer.

4. Questions and Answers

5. Reflections and close

Panel Q&A – quick guide

Objective – An opportunity to understand what is available and on offer to support independent living across Hampshire.

This is an opportunity for disabled people, carers, allies and professionals to ask a range of housing experts questions on accessible housing that matter to them.

You can direct your question to a particular panel member if you wish, but you don't have to, the Chair will facilitate discussion and ensure that relevant panel members are invited to share their thoughts as appropriate.

Please remember that this is a public event, therefore:

- Do not share any personal or sensitive information.
- Try and focus your questions on issues that are relevant to all. We will not be able to answer any questions on specific local issues (e.g. a particular bus route or train station).

Workshop Facilitators



Rachel Harrison

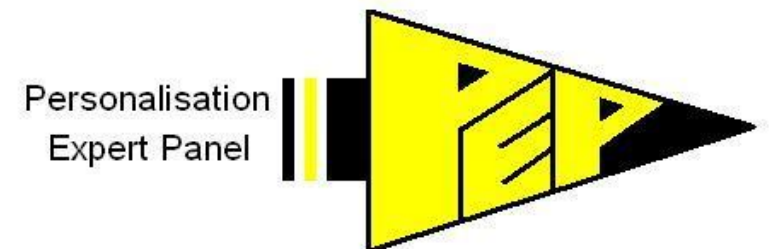
Rachel Harrison is one of the Co Chairs of PEP. Rachel also Co Chairs the Direct Payments Framework Board and sits on the County Council's Care Governance Board. Rachel applies her knowledge of co-production, policy and strategy.

Rachel has personal experience of support needs and employing personal assistants who enable her to live independently.

Rachel uses her experience to improve services and empower others.

David Yeandle OBE

David was diagnosed with relapsing remitting MS in March 2010 and was informed in September 2020 that he had moved to the progressive stage of MS. David retired from full-time employment in October 2010, having been the Personnel Director of Pirelli Cables and then the Head of Employment Policy at EEF (now MakeUK). He has subsequently had some part-time roles, including the President of the United Nations' Staff-Management Committee for 4 years. David is also a member of PEP.



Meet the Panel



Amy Hobbs, Strategic Housing Officer, Basingstoke and Deane Borough Council

Amy has worked in local authority housing departments for the past 10 years, starting as a Housing Graduate and moving across to a Homeless Prevention Officer at Tunbridge Wells Borough Council. For the last 9 years, Amy has worked at Basingstoke and Deane Borough Council, working as a front line Senior Homeless Prevention Officer, then as an interim Team Leader Register and Accommodation Services for a period before moving to her current role in 2020 as Strategic Housing Officer. She covers the whole of the housing service in driving and shaping key strategic outcomes, and her knowledge base of social housing, homelessness and the wider housing sector assists with this.



**Basingstoke
and Deane**

Meet the Panel



Elizabeth Hawkins, Senior DFG & Housing Enforcement Officer (BSc, MSc, CEnvH, MCIEH), Eastleigh Borough Council

Elizabeth has been working in local government for the last 15 years, majority of that time has been working to improve housing standards and access to safe & suitable housing for residents. She currently is the senior officer & team leader of the Housing Standards team at Eastleigh Borough Council which includes the delivery of the Council's disabled facility grant service. She holds a MSc in Environmental Health, is a Chartered Environmental Health Professional and longstanding member of the Chartered Institute of Environmental Health (CIEH).



Meet the Panel



Jacqui Evans, Strategic Commissioning Lead, Hampshire County Council

Spent the first part of her career working with a range of Registered Providers in front line housing management and policy work before moving into local government; where she worked for five of the Hampshire authorities in housing, transformation and community development roles. Before joining Hampshire County Council, Jacqui was Director for Communities and Wellbeing at Harborough District Council in Leicestershire, leading all front-line services. Jacqui is now Hampshire County Council's Strategic Commissioning Lead for Housing covering a range of housing elements including Extra Care.



Hampshire
County Council

Meet the Panel



Jenny Dixon, Strategic Commissioning Lead for Younger Adults Accommodation, Hampshire County Council

Jenny joined Hampshire County Council's Learning Disability Day Services in the mid 1990's and completed her Diploma in Social Work. She later became a Team Manager the Havant and East Hants (at the time Integrated with Southern Health) Learning Disability Team for 5 years before moving into Commissioning Team as a Strategic Commissioning Lead in 2015.

Throughout her Social Work and Commissioning career, Jenny has had an interest in Supported Accommodation and has been involved in developing opportunities in different ways since 2006.



Hampshire
County Council

Meet the Panel



Guy Harris – Accessible PRS

Guy founded and runs AccessiblePRS. He is committed to seeing a growth of accessible housing, seeing it as absolutely necessary and also a huge opportunity as a chronically undersupplied market area. He has spent over twenty years in property – in sales, asset acquisitions, refurbishment and development, and as a landlord and investor in residential and commercial property in the UK and Germany. Having sustained a spinal injury in 2003, he brings lived experience to his role, providing both commercially driven and insightful perspectives to the challenge of accessibility in housing.

He has designed and built his own accessible and sustainable family home, and lives by the social model of disability: by removing obstacles in the built environment, a person is not limited to or defined by their disability.





Extra Care Housing

Jacqui Evans, Strategic Commissioning Lead, Hampshire County Council



Hampshire
County Council

Extra Care housing – the schemes, the model and how to access to Extra Care housing



Independent living for people with care and housing needs

Safe: Supported: Independent and never lonely

Hampshire County Council works closely with

- District and Borough Councils,
- Registered Providers and
- Care Providers.

To offer an independent living solution for people aged 55 and above with ongoing care needs who are eligible to join the local housing register.

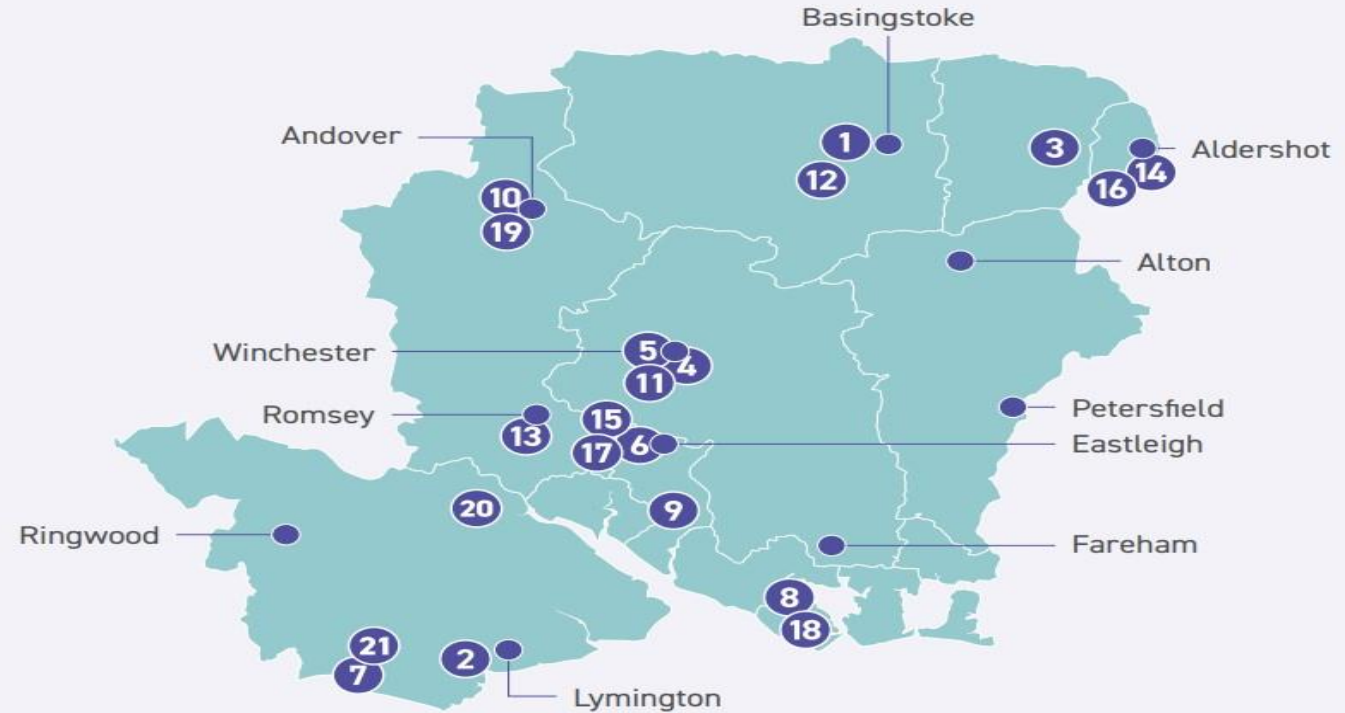
HCC commissions onsite care services within the schemes and trained staff are onsite 24/7.



Extra Care housing – the schemes

- Currently HCC have 20 schemes across the county, with over 900 flats.
- Soon to be 21 – Wooldridge View in construction.

Current Extra Care schemes



- | | |
|--------------------|-----------------------|
| 1. Abbey Court | 12. Newman Court |
| 2. Barfields Court | 13. Nightingale Lodge |
| 3. Campbell Place | 14. Place Court |
| 4. Chesil Lodge | 15. Rowan Court |
| 5. Danemark Court | 16. St. John's Court |
| 6. Fernhill Court | 17. Surrey Court |
| 7. Gore Grange | 18. Spinnaker View |
| 8. Juniper Court | 19. Warner Court |
| 9. Laburnum House | 20. Winfrid House |
| 10. Lion Oak Court | 21. Wooldridge View |
| 11. Matilda Place | |

Extra Care housing – the model



- Various models of delivery for Extra Care schemes
 - HCC land
 - Within a large development
 - An older existing sheltered scheme
- We ask Registered Providers to tender for build and management of the scheme
- We commission the care, 24/7
- Consists of self contained flats 1 and 2
- Some rent or part buy part rent
- Restaurant/café
- Outside space
- Communal lounge



Extra Care housing – how to access?



- Need to have an identified Care and Support need and a Housing Need
- Care Act assessment to identify eligible care and support needs
- The resident needs to be safe to be left alone in between care calls, as this is independent living
- Panel – RP/landlord, HCC, care provider to ensure suitability
- Housing need – determined by the local authority



Extra Care housing – Our Principles



- Extra Care housing to be a **lifelong home of choice**
- Offer choice of Extra Care **housing not supplied by the market**
- Built to **accessible standards**
- **Make best use of exiting stock** for the Place
- **Reduce the need for residents** to go into residential/nursing care by being independent as long as possible
- A **mix of tenure** in the schemes to reflect the place
- Extra Care housing scheme to be an integral, **thriving part of the community**





How to apply for affordable housing

Amy Hobbs, Strategic Housing Officer, Basingstoke and Deane Borough Council



Basingstoke
and Deane

How to apply for social housing

- Applications to the Housing Register are made online on Basingstoke Homebid's website
 - <https://www.basingstokehomebid.org.uk/>
- We can post paper applications
- Our website provides more information on how to apply
 - <https://www.basingstoke.gov.uk/housingallocations>
- Contact details - housing services at housing@basingstoke.gov.uk or 01256 844844

Who can apply

- Be over 16 years old
- Have a local connection to the borough
- Have a household income under £50,000 per annum
- Have savings/assets less than £30,000. (If you have savings/assets more than this, and you require an adapted property we can look at your circumstances on a case-by-case basis)
- Have a housing need. This includes, sharing facilities with another household, needing to move on welfare/social grounds, medical/disability grounds and/or mental health/disability grounds

How the housing register works

Applications are placed in date order within one of three bands.

- Band 1 – applicants with a housing need and an urgent need to move as detailed in our allocations scheme
- Band 2 – applicants with a housing need
- Band 3 – applicants with a housing need who have reduced priority. For example, having former or current housing related debt

Most applicants are placed into Band 2. You do not move up bands automatically. Your position within your band may improve as other applicants above you are re-housed. You may move bands if your circumstances change.

Viewing and placing bids

- You can view and place bids on advertised properties online
- Bidding means expressing an interest in a property
- If you do not have access to the internet, we can post a paper newsletter showing the advertised properties
- You can also bid by phone or text
- Further information on our website:

<https://www.basingstoke.gov.uk/homebid>



Basingstoke and Deane
homebid

Housing scheme guide

Under Basingstoke and Deane Homebid, finding a home is easier. It gives you greater opportunity to find a home of your choice in an area you prefer.



www.basingstokehomebid.org.uk

0300 011 2460 | Basingstoke and Deane Borough Council, Civic Offices, London Road, Basingstoke, RG21 4AH



Basingstoke
and Deane

Property types

- Properties which are deemed as accessible will be prioritised for people who have access needs. You will need to have an assessment with an Occupational Therapist.
- Ground floor accommodation is prioritised for applicants who are disabled or require ground floor accommodation on medical grounds
- There is a longer wait for bungalows compared to ground floor flats
- If a property has certain adaptations, these will be detailed on the property advert. For example, a wet room, wheelchair accessible
- Applications for designated older person's accommodation (sheltered housing) will be considered where applicants are aged over 55



Younger Adults Supported Accommodation explained

Jenny Dixon, Strategic Commissioning Lead, Younger Adults Accommodation,
Hampshire County Council



Hampshire
County Council

Younger Adults Supported Accommodation

Supported Accommodation means housing that comes with support

Different types of Accommodation

- Shared Houses – mostly 3 – 4 people sharing
- Younger Adults Extra Care – blocks of 4 – 18 flats
- General needs or private housing
- Shared Lives
- Older Persons Extra Care



Younger Adults Supported Accommodation

Support in Supported Accommodation

- There will usually be a Support Provider who provides staff to the house, most of these have a Contract with the County Council
- There will be some shared support at the property which can include someone awake or asleep overnight
- People who live in Supported Accommodation can have 1:1 or sometimes 2:1 support if that is what they need
- The owner of the Housing will have identified it as Supported Accommodation



Younger Adults Supported Accommodation

Who lives in Supported Accommodation

- People with Learning Disabilities, Physical Disabilities, Autism and Mental Health Conditions can live in Supported Accommodation
- People don't have to have any special skills and abilities to live in Supported Accommodation as support is provided around the individual's needs
- Lots of people have moved into Supported Accommodation over the last few years in Hampshire – some out of residential care homes



Younger Adults Supported Accommodation

What are the benefits of Supported Accommodation

- People are able to have choice about how they spend their time, what they eat, who they want to invite into their own home, and how they spend their money
- Hampshire has created lots of flats and some bungalows over the past few years so lots of people have the opportunity to have their own front door
- Some people have their own pets, there are people with rabbits, guinea pigs and cats
- (*needs landlord to agree)





Disabled Facility Grants (DFGs)

Elizabeth Hawkins – Senior DFG & Housing Enforcement Officer



Disabled Facility Grants (DFGs)



Disabled Facility Grants (DFGs) are a statutory service provided by Local Housing Authorities.

What are DFGs for?

- Structural adaptations to a persons' home
- Larger equipment that is integrally fixed to the structure of the property.

Who are DFGs for?

- They are available for anyone who is disabled or elderly who meet the eligibility criteria
- They are tenure neutral, so it does not matter if you are a home-owner, private tenant or housing association tenant.

What are the eligibility criteria for a DFG?

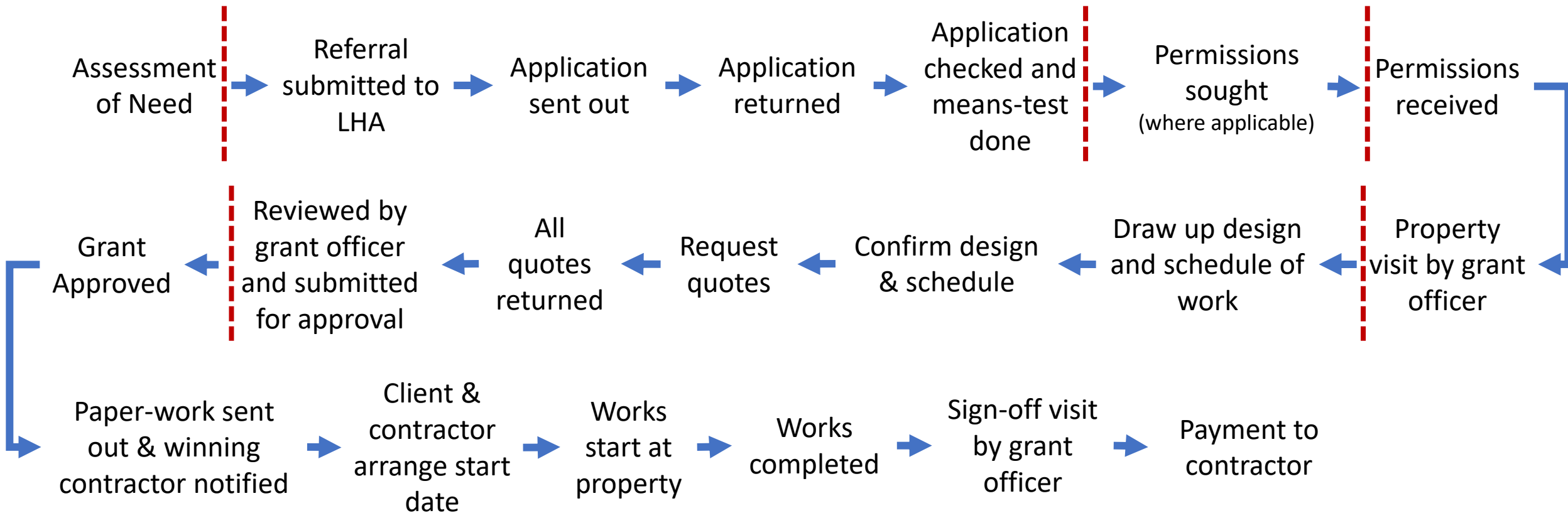
- Financial eligibility – DFGs are means-tested
- Adaptation eligibility – assessed to be “necessary and appropriate”
- Structural viability – determined to be “reasonable and practicable”



Disabled Facility Grants (DFGs)



What is the Process?



Disabled Facility Grants (DFGs)



How much is a DFG for?

- There is an upper limit on how much can be awarded for a DFG in legislation, this upper limit being £30,000.
- However, this does not mean every applicant gets this amount, the actual amount will be different on each individual DFG and the Council will determine, usually based on the quoted costs obtained for the actual adaptations requested, what amount will be awarded.

Discretionary Schemes

- Councils can choose to operate discretionary schemes in addition to the mandatory DFGs. These can often be used to allow top-ups where costs go above the upper limit of £30,000, to cover client contribution amounts, or be awarded for works that may not be eligible for the mandatory DFGs.
- These are optional and it is the individual LHAs choice on if/how these are provided and if they wish to set any requirements or limits for what is provided.

ILC

Independent
Living
Conference

Celebrating 40 years of
Independent Living in Hampshire

This session has ended

ILC

Independent
Living
Conference

Celebrating 40 years of
Independent Living in Hampshire

Peer Support Workshop

13:30 – 14:30

Peter Beresford OBE



Peter is Chair of Shaping Our Lives, the national disabled people's and service users' organisation committed to supporting people's direct voice, inclusive involvement and lived experience. He is a long-term user/survivor of mental health services.

Peter was also the former Director of the Centre for Citizen Participation. His particular areas of focus are public, patient and service user involvement in policy and practice; democratisation and participatory approaches to research, particularly in relation to user controlled and user involvement research.

Peter is Visiting Professor at the University of East Anglia and Emeritus Professor at Brunel University London and Essex University.

Ian Loynes



Ian is actively involved with several organisations controlled by Disabled People. Ian is Chief Executive Officer of SPECTRUM Centre for Independent Living in Southampton.

He was a Trustee for the National Centre for Independent Living; and has been a Trustee of Disability Rights UK since they formed in 2012.

Ian has also served on a number of influential bodies, locally, regionally & nationally. Ian was a commissioner on the Southampton Fairness Commission, served on the Independent Living Scrutiny Group (Office of Disability Issues) and co-founded SENDPO (the South East Network of Disabled People's Organisations). Ian is currently a member of the Independent Living Strategy Group, a national network co-ordinating Independent Living strategy nationally and led by Baroness Campbell of Surbiton.

John Evans OBE



John Evans is a Disability Rights consultant, trainer and activist, passionate about co-production, Independent Living and Human Rights.

John was the first person to have an Independent Living package funded by Hampshire County Council in 1983. He has been one of the founders and leaders of the disability movement in the UK and Europe. He was co-founder of Project 81, Hampshire and National Centres for Independent Living and the European Network of Independent Living. He has written and talked widely about disability issues and human rights throughout the UK and Europe.

In 2001 he was awarded an OBE and in 2003, the European Year of Disabled People, the Tuscany Silver Banner Award for his international work.

He is a member of PEP (Personalisation Expert Panel) in Hampshire and on the SCIE (Social Care Institute for Excellence) Co-Production Steering Group.

ILC

Independent
Living
Conference

Celebrating 40 years of
Independent Living in Hampshire

Accessible Transport Workshop

13:30 – 14:30

Session running order

Welcome – Ann Frye

Panel Q&A - All

Reflections and close – Ann Frye

Workshop Chair – Ann Frye



Ann Frye OBE, BA, FCILT, FCIHT, TPP

Ann is an international specialist on the mobility needs of disabled and older people across all transport modes and the pedestrian environment.

She works as an expert advisor on both international and UK projects on accessibility, including developing and establishing best practice in delivering accessibility and mobility options for people with physical, sensory, cognitive and mental health issues.

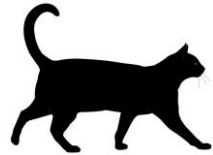
Ann has worked in this field for over 30 years; until 2006 she headed the Mobility & Inclusion Unit in the UK Government Department for Transport where she delivered a programme of research, legislation and policy to promote the mobility of disabled and older people in all areas of transport.

She is a Fellow of the Chartered Institute of Logistics and Transport and of the Chartered Institution of Highways and Transportation. She is also an honorary Transport Planning Professional.

Meet the Panel



Andrew Wilson, Strategic Transport Manager at Hampshire County Council



Jim Morey, Freelance specialist in: Access & Inclusion, Highway & Transport Planning, Le Chat Noir



John Birtwistle, Head of Policy, First Bus



Mel McDougall, Interim Operations Director, Stagecoach South



Michael Adlington, Senior Accessibility and Inclusion Manager, South Western Railway



the multi-award winning company that people want to work for and travel with



Richard Tyldsley, Richard Tyldsley, General Manager, Bluestar & Unilink

Panel Q&A – quick guide

Objective – An informative and useful discussion on what accessible transport looks like today, plans for tomorrow and ambitions for the future.

This is an opportunity for disabled people, carers, allies and professionals to ask a range of transport experts questions on accessible transport that matter to them.

You can direct your question to a particular panel member if you wish, but you don't have to, the Chair will facilitate discussion and ensure that relevant panel members are invited to share their thoughts as appropriate.

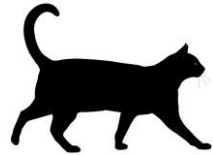
Please remember that this is a public event, therefore:

- Do not share any personal or sensitive information.
- Try and focus your questions on issues that are relevant to all. We will not be able to answer any questions on specific local issues (e.g. a particular bus route or train station).

APPENDIX – FULL PANEL BIOGRAPHIES



Andrew Wilson, Strategic Transport Manager at Hampshire County Council



Jim Morey, Freelance specialist in: Access & Inclusion, Highway & Transport Planning, Le Chat Noir



John Birtwistle, Head of Policy, First Bus



Mel McDougall, Interim Operations Director, Stagecoach South



Michael Adlington, Senior Accessibility and Inclusion Manager, South Western Railway



Richard Tyldsley, Richard Tyldsley, General Manager, Bluestar & Unilink

Andrew Wilson, Transport Manager at Hampshire County Council



Andrew is Strategic Transport Manager at Hampshire County Council. He is responsible for public transport policy including bus rail, ferry, Bus Rapid Transit, ticketing and Real Time Passenger Information. Andrew works closely in partnership with Hampshire's bus and rail operators to improve services for passengers, co-ordinate funding bids and deliver infrastructure projects.

Andrew previously spent four years managing Solent Transport, a strategic transport partnership of Hampshire County Council, Portsmouth & Southampton City Councils and Isle of Wight Council, promoting a co-ordinated approach to transport policy and investment across the Solent sub-region. This included working closely with major stakeholders including Highways England, Solent LEP, Network Rail, the Department for Transport and public transport operators to develop the case for transport investment.

Andrew holds chartered status with the Chartered Institute of Logistics and Transport and previously held the post of Deputy Chair of the Real Time Information Group, a national organisation which establishes and shares good practice in the use of information and communications technology in public transport. He has also worked for Salisbury District Council delivering Salisbury's Park & Ride schemes and was a graduate trainee and manager with Arriva, operating buses in the north-west of England.



Hampshire
County Council

Jim Morey, Freelance access consultant

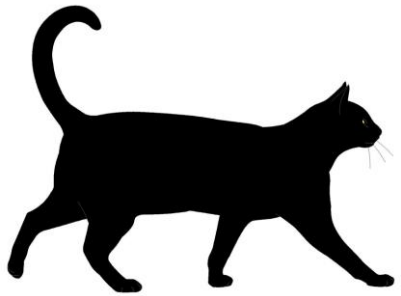


Jim Morey is a freelance access consultant who specialises in making our highways / streets and transport environments as inclusive and accessible as possible.

Jim's principal activities are undertaking access audits, design appraisals and brokering effective engagement between services providers and users. He also provides training and writes Equality Impact Assessments, Access Statements and Access Strategies.

Jim's professional background is in highway / street design and transport planning. He is disabled himself and is involved with local disabled person's organisations (DPOs) including Gosport Access Group and Disability Forum (where he serves on the management committee) and Disabled People's Voice (of which he is a director). His MSc dissertation examined the barriers disabled people face in transport. These roles and experiences give him an understanding of the needs and constraints faced by both users and providers / practitioners.

Jim is passionate about raising disability awareness and understanding amongst his colleagues. He is a member of the Access and Inclusion Forum of the Chartered Institution of Logistics and Transport (chaired by Ann Frye) and is a co-opted director (with portfolio for Access, Equality, Diversity and Inclusion) on the board of the Transport Planning Society. He is also a fellow of the Institute of Highway Engineers, a member of the Chartered Institution of Highways and Transportation, member of the Access Association (where he is currently chair of the South and Southwest Region) and is on the National Register of Access Consultants (NRAC).



You can follow Jim on LinkedIn and he is on [Facebook](#)

John Birtwistle, Head of Policy, First Bus



John is Head of Policy for First Bus. He leads initiatives on a variety of subjects including domestic and international policy and legislation, local authority partnerships, business opportunities, concessionary travel, vehicle technology, legal issues, ticketing schemes, autonomous vehicles, open data and passenger information and has advised on the implementation of Bus Rapid Transit in the UK and USA.



John has represented First, and the UK bus industry, on a wide range of Governmental and industry committees. He currently chairs the Traveline Board and the Operator Digital Initiative, and sits on the Executive of the Rural Services Partnership.

He was the 2016 President of the Confederation of Passenger Transport, the UK bus and coach trade association, and is the current President of the European Passenger Transport Operators association.

Mel McDougall, Interim Operations Director, Stagecoach South



- Stagecoach Graduate Leadership Programme 2015 - 2017
- Assistant/Operations Manager 2017 – 2021
- Commonwealth Games Project Manager 2021 – 2022
- Interim Operations Director/Head of Operations 2022 to date

Michael Adlington, Senior Accessibility and Inclusion Manager, South Western Railway



Michael has nine years' rail experience, seven of which is in the world of Accessibility. Michael was SWR's first, dedicated Accessibility Manager in over 10 years when he joined the business in 2018. Since then, he has:

- Successfully challenged the business to encourage Turn Up and Go travel rather than disabled and older customers having to pre-book assistance
- Introduced a unique Assisted Boarding Points service
- Introduced Calm Spaces at three stations to support customers with neurodiversity
- Encouraged the business to get the basics right

Prior to joining the railway, Michael was a secondary school teacher.

Richard Tyldsley, Richard Tyldsley, General Manager, Bluestar & Unilink



Richard began his career as a bus driver in County Durham for Go North East.

He later joined another company as an assistant operations manager, and was promoted to operations manager in 2010.

Richard joined Go South Coast as General Manager for Bluestar, Unilink and Southern Vectis in October 2016.

Hampshire County Council - Transport

Hampshire County Council's [passenger transport website](#) provides useful information about public, community and voluntary transport around the county.

You can search for [community transport schemes](#) and wheelchair-accessible taxis in your area, including those offering transport for hospital and GP appointments. They also produce a number of useful [travel guides](#). You can contact Passenger Transport on 0300 555 1388 or [email](#) them.

Please also see:

[Public transport information](#) from Portsmouth City Council.

[Public transport information](#) from Southampton City Council.

You can also check out public transport information and plan your journey on the [Traveline](#) website. See our information about [concessionary travel, discounts and money saving tips](#).

- If you are unable to find public or community transport solutions, your local [Good Neighbours](#) group (Hampshire, including Portsmouth) or [Communicare in Southampton](#) may have volunteer drivers who are able to help.
- View a list of local [accessible transport providers](#) (you will need to pay for these services)

Please see further information on Connect to Support Hampshire:
<https://www.connecttosupporthampshire.org.uk/transport>



Hampshire
County Council

My Journey

My Journey - your one stop destination for travel information and advice in the Hampshire area. It is a travel awareness campaign delivered by local Councils and partners, with funding from the Department for Transport, that seeks to help Hampshire residents get around more easily, using a range of different travel choices and options.

It contains information on most modes of local transport including bus, train, car, ferry and active modes such as walking and cycling.

<https://myjourneyhampshire.com/>



First Bus – Extra Help to Travel Cards



These cards allow people to discretely share with the driver any special assistance they require, a low-profile alternative to (and pre-dating) the sunflower lanyard scheme which First Bus also support.

A link to download and print the cards is below:



[First - Extra Help to Travel - Cut out Travel Cards \(firstbus.co.uk\)](http://firstbus.co.uk)

Extra Help to Travel Cards

Please cut out and use these cards to let your driver know if you need any help with your journey.

Please speak slowly, I am hard of hearing

Please be patient, I have difficulty in speaking

Please be patient, I am visually impaired

Please be patient, I have a hidden disability

Please tell me when we get to

Please wait for me to sit down, in case I fall

Please be direct, I have autism

Please be patient, I have had a stroke

Please face me and speak clearly, I lip read

Please count out my change with me

Please scan my pass for me

Please help me find a seat

Please be patient Add any special instruction

Please be patient Add any special instruction

South Western Railway– Extra Help to Travel Cards

The **South Western Railway (SWR) website** contains lots of useful information regarding:

- Passenger Assistance
- Our Travel Assistance card
- Our novel Assisted Boarding Points offering

<https://www.southwesternrailway.com/travelling-with-us/assisted-travel>

SWR also offer **Try the Train days** where potential customers, or those who are nervous about rail travel can learn how to access the railway. These days are bespoke to each individual/small group. More information is available online:

<https://www.southwesternrailway.com/other/about-us/community-and-rail-station-adoption/try-the-train>

SWR have published a **Making Rail Accessible Guide:**

<https://shorturl.at/xAF89>

Travel with Confidence

Last year the Hampshire Community Rail Partnerships (in co-operation with HCC, SWR, Stagecoach Bus and other stakeholders) developed their 'Travel With Confidence - Helping Hand for those with hidden disabilities' programme.

Thanks to funding from SWR and Hampshire County Council, phase one of the Travel With Confidence project has been completed and a new booklet of resources has been produced.

You can view the Travel With Confidence booklet [here](#). The Partnership also have some printed copies available for those who will benefit from a paper copy.

The second phase of the project is currently underway, with SWR providing funding for a peer mentoring programme. [Winchester Go LD](#), a local charity which support adults with learning disabilities, are working with Hampshire CRP and other groups to help train people to travel with confidence, as well as offering learning disability groups visits to stations and journeys together. See more, including videos [here](#).



The image shows the cover of a booklet titled 'TRAVEL WITH CONFIDENCE'. At the top left, it features the logos for 'Winchester GO LD' (Enabling People with Learning Disabilities) and 'Hampshire Community Rail Partnership'. The main text on the cover reads 'BUILD KNOWLEDGE BUILD CONFIDENCE ENJOY TRAIN TRAVEL'. Below this is a white silhouette of a train. A circular inset photo shows a woman standing next to a 'Help Point' sign at a station. At the bottom right, it says 'Funded by South Western Railway'. Contact information is provided: 'FOR MORE INFORMATION', 'Call Lucy on 07551 781711', 'trains@winchestergold.org.uk', and 'https://winchestergold.org.uk/'.

ABOUT THE PROJECT

A training course delivered by members of Winchester Go LD for adults with learning disabilities to build confidence when travelling by train.

Information will also be shared by informational videos.

Created by experts with lived experience of learning disabilities on topics such as planning a journey, how to buy a ticket and finding help at the station.

Stagecoach - Journey Assistance Cards

ILC

Independent
Living
Conference

Celebrating 40 years of
Independent Living in Hampshire

What are they?

Journey Assistance Cards are available for you to use if you need a bit more help when using the bus. They'll make it easier for you to let our bus drivers know what extra help you need. You can use your cards any time of the day, seven days a week, on any of our bus services.

Who can apply for our Standard Journey Assistance Cards?

You can apply for Journey Assistance Cards if you have:

- limited vision or hearing
- difficulty in communicating
- special educational needs

or if:

- English is not your first language
- you need extra time or help to find a seat



Stagecoach - Journey Assistance Cards

ILC

Independent
Living
Conference

Celebrating 40 years of
Independent Living in Hampshire

Our Journey Assistance Cards have been developed with our trade body, the [Confederation of Passenger Transport \(CPT\)](#).

The cards available are:

- please be patient, I am deaf
- please be patient, I am visually impaired
- please be patient, I have difficulty speaking
- please be patient, I am hard of hearing
- please speak slowly and face me to help me hear better
- please scan my pass for me
- please count my change for me
- please help me find a seat
- please give me time to sit, in case I fall
- driver, please let me know when we get to . . .
- please tell me when we reach my stop

[Click here to get yours](#)



Stagecoach Bus App

Plan, track and buy tickets all in one place.

Plan your journey – set your location, choose your destination and time of travel. We'll show you which buses you can catch, what time they are running and even how busy they are with our simple traffic light indicator. Save your favourite journeys to give yourself a head start next time you travel.

Track your bus – check our live bus map to see which services are close by. You can use this before heading to your bus stop or whilst on the bus to get an estimated journey and arrival time.

Buy your ticket – download your ticket before you travel. Daily and weekly tickets are available to buy on the app. If you're in charge of buying someone else's travel you can transfer tickets to another device, ideal if you're sending someone to school or treating a friend to a day out.

ILC Independent Living Conference

Celebrating 40 years of Independent Living in Hampshire



Stagecoach - On bus accessibility



Next stop audio and visual display.

Ramps for wheelchairs, mobility scooters and push chairs, along with dedicated seating area onboard. Mobility scooter permits available via Stagecoach South following on-boarding assessment with trained personnel.

At stop accessibility

Stop specific timetables at each stop.

Customer service contact details at each stop.

Next bus arrival screens – provided for by local councils.



Stagecoach - Partnerships



We work closely with the Hampshire Community Rail Partnership on ensuring all public transport in Hampshire is accessible.

Most recently we worked with HCRP on producing a [Travel with Confidence booklet](#)

The booklet explains how to plan a journey by rail or bus, where to find information, how to buy a ticket, what to expect at a train station or bus stop and more.



Stagecoach - Tickets

Concessionary passes



If you have reached state pension age or have a certain disability, you may be eligible for a concessionary bus pass from your local council, free of charge. This is a bus pass that allows concessionary travel on most Stagecoach buses for free in England, Scotland and Wales.

When can you use your pass?

- All day on bus services starting in Hampshire (not Portsmouth and Southampton) regardless of where you are travelling to.
- Free travel between 9:30am to 11pm Monday to Friday and all day at weekends and on public holidays on bus services throughout the rest of England (including London)
- On Park and Ride services registered as local bus services (you must still pay for the parking).

Apply for concessionary travel passes via the Hampshire County Council website.



ILC

Independent
Living
Conference

Celebrating 40 years of
Independent Living in Hampshire

Inclusive Education, Skills and Employment

Toni-Marie Leaf



Toni-Marie Leaf,
Development
Manager (SEND
Employability),
Hampshire
Achieves

Toni's role supports the development of post 16 pathways for young people with Special Educational Needs and Disabilities. This provides choice for SEND young people in transitioning into adulthood, making sure they are best prepared for adulthood, and have equitable opportunities for the future that meet their ambitions.

By working alongside colleges and employers Toni is able to support employers across Hampshire to recognise the talent and skills SEND young people bring to the market, and help employers meet their skills gaps.

Through her stakeholder engagement and work to create smooth pathways into adulthood for SEND young people Toni works to ensure Hampshire is inclusive, for all residents, and that all young people are given the best chances to have ambitious futures.

At Hampshire County Council Toni works with passionate and committed people to make positive changes that will have lasting effects on people's lives. Toni feels lucky to be able to work with a range of stakeholder across the county on this shared vision, joining up with them to drive high ambitions and timely support for SEND young people.



Phoebe
Young person
volunteer

What people appreciate about me:

I'm kind hearted, I put other people before myself, I have a Good sense of humour, I listen to what other people have to say, I'm creative and hardworking and caring

What is important to me:

- People being treated in a happy and positive way and not being let down by people
- Seeing people not struggling and being able to enjoy their lives as much as possible
- People feeling like they have someone they can talk to and get rid of their problems
- Spending time with my family and the people I love the most
- Handing coursework in on time and being on time to places, lessons and meetings
- People being able to feel like they have achieved something and have not been let down

How to support me:

Treat me with respect, Only use words I am able to understand what is being said, Don't talk to fast, Give me enough time to think and talk about what I would like to say, Give me time to make notes if I need to, Give me enough time to make any changes to my work or what I have said

Inclusive Education, Skills and Employment



This session we will be hearing about:

- Education programmes for young people transitioning to employment and independence
- Adult Community Offers to develop Skills
- Minstead Trust programmes to support employment and skills pathways
- Adult Health and Care (HCC) recruitment and retention programme and Disability confident Status
- Department of Work and Pension programmes to support employment
- A young person's journey through College, Supported Internships and into employment.

The rest of the session will be a chance to ask questions and discuss topics that have been presented.



All Our Talents: Hampshire's SEND Employability Action Plan

Sets out Hampshire County Council's current work and future plans for young people aged 16-24 with special education needs or disabilities (SEND).

'Develop a county wide, joined up and high performing employability offer for SEND young people which focuses on maximising progression into sustained employment'.

Developed in line with SEND reforms to the Children's Act 2014, through a consultation exercise including engagement directly with SEND children and young people, and with a multi-agency working group.

<https://documents.hants.gov.uk/education/all-our-talents.pdf>

The SEND Independence Hubs: **Pathways to independence for Hampshire's SEND young people**

Our new post 16 offer for young people with severe learning difficulties (SLD) and complex needs will provide training and education which focuses on the skills needed for independent living, employment, community engagement and good health. We want all SLD young people to thrive within their local communities, enabling them to access high quality and inclusive provision close to home, giving them the best opportunity to grow into independent adults.

Based within the further education (FE) college network, each resource will offer a safe physical space within the campus with its own identity and offering bespoke facilities to meet the needs of learners. The curriculum has been developed to reflect the four principles of Preparing for Adulthood with a clear aspiration to support young people to progress to independent living and fulfilling futures.

[SEND-Independence-Hub-booklet.pdf \(hants.gov.uk\)](https://www.hants.gov.uk/SEND-Independence-Hub-booklet.pdf)

Independence Hub Eligibility

The Offer:

- 8 spaces per year (per site) available.
- A provision in mainstream FE for learners that would historically have remained in Special Schools / INMSS
- Preparing for Adulthood outcomes delivered in a personalised way based on EHCP outcomes
- Specialist environments to meet need in FE settings
- Full facilities and details available: [SEND Employability and Independence Hubs | Hampshire County Council \(hants.gov.uk\)](#)

Criteria:

- Entering first year of post 16 education (Year 12) or exiting a 16-19 special school offer with PfA delivery (for those with post 19 offer*)
- Studying at pre-entry to entry 1/2 level
- SLD and/or complex needs including those:
 - With some risk of absconding
 - More complex communication needs
 - Some challenging behaviours
 - Medical needs that can be met by the colleges provision

Referral / Consults:

Referrals into the College (as usual) and copy in the lead case officer:

HSDC Alton* Campus
Sophie Owen, Hub lead:
sophie.owen@hxdc.ac.uk
Tanya Gard, Case Officer

Brockenhurst College
Sara Fisher, Hub Lead: sfisher@brock.ac.uk
Nicola Edwards, Case Officer

Andover* College
Suzie Oostendorp, Hub Lead:
suzie.oostendorp@sparsholt.ac.uk
Claire Holder, Case Officer

The SEND Employability Hubs: Pathways into employment for Hampshire's SEND young people

SEND Employability Hubs provide young people with education, skills and personal development, as well as work placements and experience and Supported Internships based on the young person's needs and aspirations.

We will also work with employers across Hampshire to recognise the value and skills SEND young people bring to the employment market and support them to provide meaningful opportunities for SEND young people.

Hubs are located to maximise access for young people and encourage them to have high ambitions by placing a clear emphasis on an education and training offer that supports progression to employment.

Employability Hub Eligibility

The Offer:

- Up to 20 spaces per year per site available.
- Provides them with a tailored programme of education, skill and personal development to support their preparation for the transition into employment
- Preparing for Adulthood outcomes delivered alongside in work experience
- Full details available: [SEND Employability and Independence Hubs | Hampshire County Council \(hants.gov.uk\)](#)

Criteria:

- Entering first year of post 16 education (Year 12)
- Have an Education, Health and Care Plan (issued by Hampshire County Council prior to commencing FE)
- Want to access employment following college

Hub Sites and Referrals

- HSDC (South Downs Campus)
- St Vincent College
- Farnborough College of Technology
- Andover College (Sparsholt);
- Totton College
- Basingstoke College of Technology
- South Hampshire College
 - Fareham College
 - Eastleigh College

To discuss a young person joining an Employability Hub you can chat with the college.

Further information about individual Hubs is available on Hampshire's Local Offer: [Information Hub - Search Results | Family Information and Services Hub \(hants.gov.uk\)](#)

Supported Internships

A Supported Internship is a study programme specifically aimed at young people aged 16 to 24 with an EHCP who want to move into employment and need extra support to do so.

The aim of a Supported Internship is to prepare young people with complex needs for paid employment by:

- supporting them to develop the skills valued by employers;
- enabling them to demonstrate their value in the workplace; and
- developing confidence in their own abilities to perform successfully at work.

The ideal outcome from a Supported Internship will be the offer of a paid job.

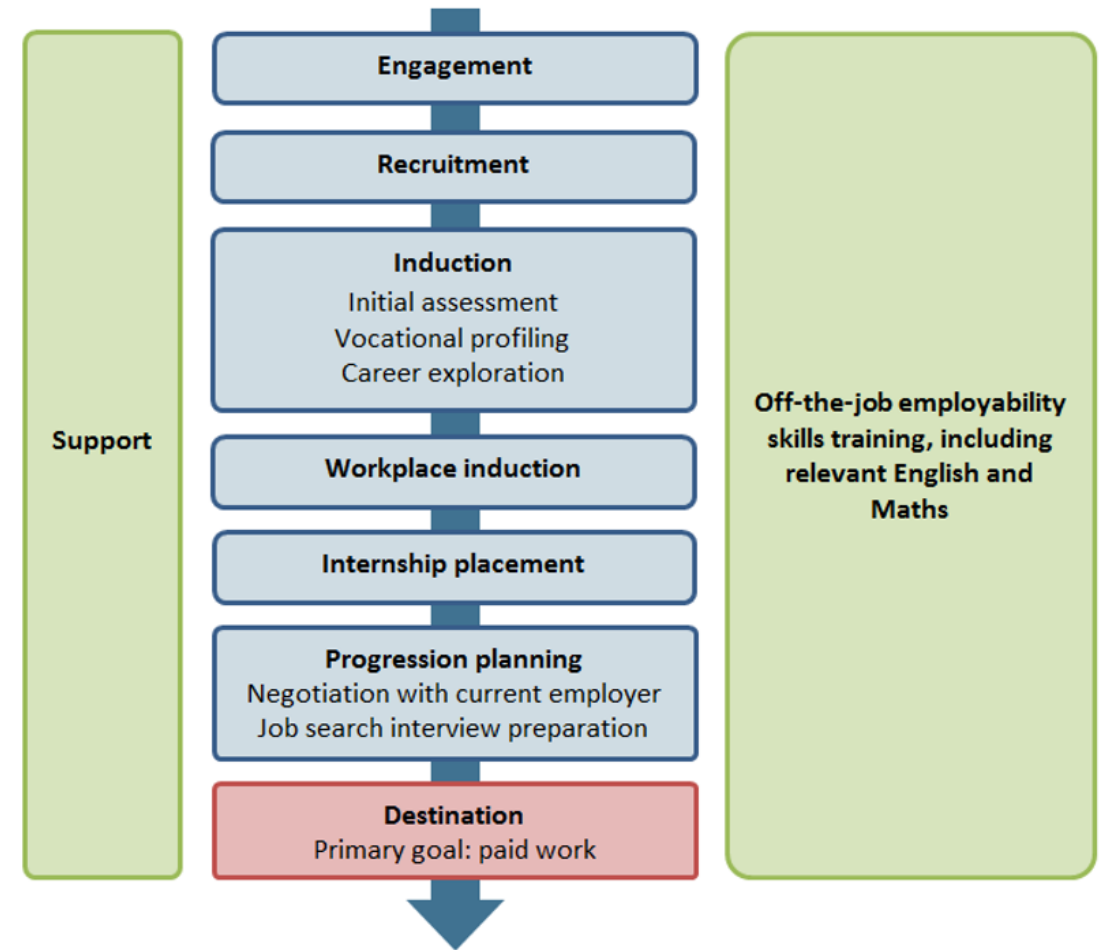


Figure 1 - An example of a supported internship

Supported Internships

The Offer:

- The programme provides substantial supported time in the workplace.
- Aims to prepare young people with additional needs for the workplace by supporting them to develop skills, demonstrate workplace value and develop confidence.
- Ideally young people will transition in to paid employment / apprenticeships.

Criteria:

- Have an Education, Health and Care Plan
- Aged between 16-24 years old
- Ready to transition into employment
- Any academic ability can access a Supported Internship

Sites:

- Hampshire Achieves (Hampshire County Council)
- Choices College (NHS Project)
- South Hampshire College (Eastleigh College)
- Farnborough College of Technology
- Sparsholt College (Andover and Sparsholt Campus)
- St Vincents' College,
- HSDC (South Downs campus),
- Totton College.

If you want to discuss a Supported Internship you can contact one of the above providers.

Further information about Supported Internships is available on Hampshire's Local Offer: [Information Hub - Search Results | Family Information and Services Hub \(hants.gov.uk\)](#)

Hampshire Learns:

Adult Community Learning course for adults aged 19 and over in Hampshire

The Offer:

Hampshire Learns offers course that develop the skills, confidence, motivation and resilience of adults of different ages and backgrounds to:

- progress towards formal learning and employment
- Improve their health and wellbeing
- develop stronger communities

Eligibility:

Training is free for Hampshire residents aged 19+ who meet one or more of the following characteristics:

- Without a full Level 2
- In receipt of Income Support or Universal Credit
- Families with school age children in receipt of free school meals
- Have a learning difficulty and/or disability
- Who are at risk of/have mental health needs

Courses:

- Employability programmes to support learners into work
- English and Maths
- English for Speakers of Other Languages (ESOL)
- Computing / IT
- Childcare / Parenting
- Health and Wellbeing
- Cookery and Food Preparation
- Arts and Crafts

<https://www.hants.gov.uk/educationandlearning/participation-lifelong-learning/hampshire-learns>

Hampshire.Learns@hants.gov.uk

Minstead Trust: Supporting people with Learning Disabilities



At Minstead Trust we nurture the unique potential of people with learning disabilities

[Minstead Trust | Supporting people with learning disabilities](#)

Adults' Health
and Care

Employment Opportunities with Adults' Health and Care

16 November 2023

What we do:

- In response to the very challenging recruitment and retention issues being experienced across the Social Care workforce, AHC took the decision to create a centralised team to co-ordinate their activity in this area with the aim of finding, attracting, recruiting and retaining fantastic people who embody our values.
- We provide a centrally managed approach with consistent practices which aim to:
 - reduce vacancies and agency spend (including creating talent pipelines)
 - release management capacity
 - improve the directorate's reputation and presence in the marketplace
 - improve retention, including promoting career pathways
 - proactively respond to external factors to address staff shortages across the Health and Care sector
 - implement and evaluate agile resourcing solutions to meet the needs of the service/team. Share insight and adjust future strategies accordingly
 - ***provide candidates with a more personal service, responding to their needs and keeping them engaged throughout the recruitment journey***

As a candidate, you can expect:

- Job adverts that are written in relaxed, clear English, with all jargon removed
- Adverts placed in a number of locations, to reach the widest possible audience
- A candidate pack with all vacancies, which includes more detail on the role, the person specification and the benefits of working for HCC to allow candidates to make informed decisions before applying
- Applications are received on-line where possible [Public Sector jobs in Local Government and Emergency Services \(newjob.org.uk\)](https://www.newjob.org.uk), but alternative application methods are acceptable. You don't need a CV to apply, but this can be added to your online application if you have one
- As a disability confident employer, applicants are given the opportunity to disclose a disability at application stage (more details on the next slide)
- Interviews can be offered face-to-face or online
- During the pre-employment checks process, you will be able to contact our team at any time if you require support or an update on the progress of your checks

To find out more about the opportunities available across AHC, please visit:

[AHC Care Careers | Hampshire County Council \(hants.gov.uk\)](https://www.hants.gov.uk)

Level 2 Disability Confident Employer



Disability Confident is a scheme which supports employers to increase the number of disabled people in their workplace and to make the most of their talents.

- challenging attitudes towards disability
- increasing understanding of disability
- removing barriers to disabled people and those with long-term health conditions
- ensuring that disabled people have the opportunities to fulfil their potential and realise their aspirations

The scheme (previously known as the two ticks scheme) has three levels and Hampshire County Council recently achieved level 2. Therefore, we are committed to:

- Actively attracting and recruiting disabled people to help fill our opportunities
- Providing a fully inclusive and accessible recruitment process
- Offering an interview to disabled people who meet the minimum criteria for the job
- Being flexible when assessing people so disabled job applicants have the best opportunity to demonstrate that they can do the job
- Proactively offering and making reasonable adjustments, as required
- Encouraging our suppliers and partner firms to be Disability Confident
- Ensuring employees have appropriate disability equality awareness training.

Employment Support – DWP



Access to Work: can help you get or stay in work if you have a physical or mental health condition or disability. You can apply for a grant for practical support, support with managing mental health at work, communication support at job interviews.

[Access to Work: get support if you have a disability or health condition: What Access to Work is - GOV.UK \(www.gov.uk\)](https://www.gov.uk)

Intensive Personalised Employment Support: one to one support and training to help you into work if you have a disability, are currently unemployed, between school leaving age and state pension age and living in England or Wales (accessible via Jobcentre plus).

[Intensive Personalised Employment Support: What is Intensive Personalised Employment Support - GOV.UK \(www.gov.uk\)](https://www.gov.uk)

Work and Health Programme: Helps you find and keep a job if you are out of work, supports a range of people including those that are disabled (accessible via Jobcentre plus)

[Work and Health Programme - GOV.UK \(www.gov.uk\)](https://www.gov.uk)

My Supported Internship experience

By Phoebe Curtis

I contacted Hampshire SENDIASS when Andover College first recommended the Supported Internship to me, Hampshire SENDIASS then contacted SEND Employability who gave me information on what a Supported Internship is and where I can find one.

I chose to do one at my local college, Andover College because I was already a student there. All I had to do was tell them what career I wanted to go into, I wanted to go into the care industry in a local care home for elderly people.

Finding Placement

The first thing we did was we found local care home within Andover, the first one we tried was Arbory Residential Home although I enjoyed when I went for a trial they messed us around quite a bit.

Instead we contacted Andover Nursing Home who immediately took me onboard gave me my uniform, showed me around the home, introduced me to staff, and did my Volunteer DBS check. When I went along for my first day I felt a bit nervous but they happily got me involved and allowed me to ask any questions I had they were very warm and welcoming.

Alongside placement at Andover Nursing Home

I did three days a week at Andover Nursing Home, Wednesday, Thursday and Friday.

While at college on a Monday and Tuesday, we worked life skills, living independently, cooking, budgeting, work skills, we also kept a log and shared it with friends towards what we had done while at placement.

I was also able to study GCSE English and GCSE Maths.



One placement had finished

The Andover Nursing Home offered me a full time job which I was very happy to accept.

I am still there now and I am loving my job and I would definitely recommend a Supported Internship to anyone who is interested.

Other photos from my Supported Internship



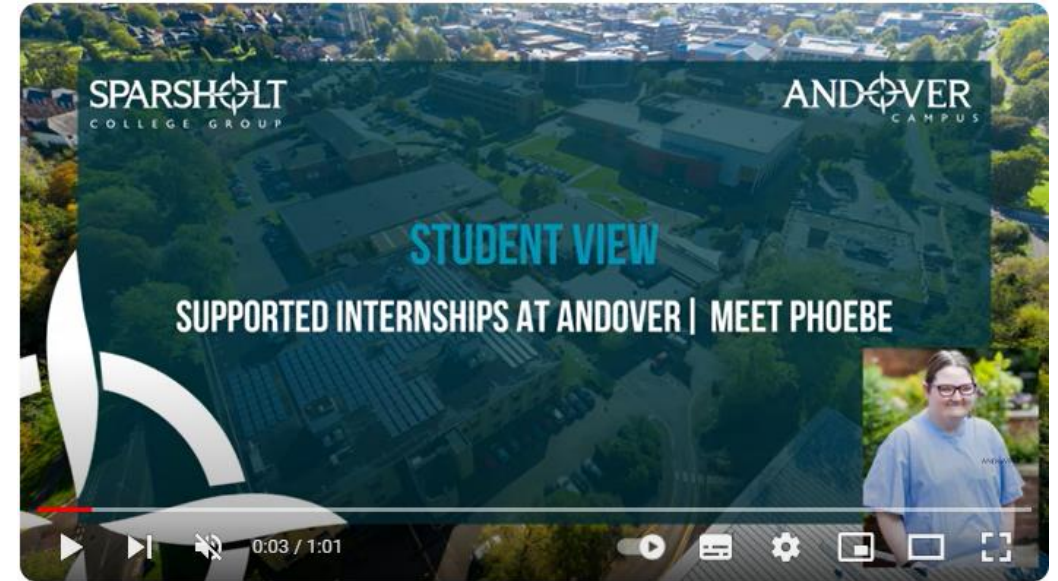
Case Studies – Experiences of Supported Internships



Phoebe's experience of Supported Internships:

[Supported Internships at Andover | Meet the Intern – YouTube](#)

[Supported Internship at Andover | Meet the Employer - YouTube](#)



Other Supported Internship Case Studies:

Hearing from Employers across Hampshire Achieves: <https://www.youtube.com/watch?v=SUIv-M9g4t8>

Basingstoke and Dean Borough Council: <https://youtu.be/x3C-K4YH80I>

QA Hospital: <https://we.tl/t-SSnE7Vj2bl>

Questions and Discussion



If you would like to ask a question or make a comment, please add it to the chat or place your hand up and a presenter will call on you.



ILC

Independent
Living
Conference

Celebrating 40 years of
Independent Living in Hampshire

This session has ended

ILC

Independent
Living
Conference

Celebrating 40 years of
Independent Living in Hampshire

Personal Assistants

During the workshop



- Please be respectful of your fellow attendees and remain mindful of your behaviour and language.
- Sit comfortably in a suitable environment.
- Please consider putting your phone on silent to avoid distractions.
- Please do not smoke or vape during the session.
- Please do not share any personal details or information within the session.
- Be mindful that the chat is visible to all attendees and is only to be used for appropriate questions.
- Hampshire County Council colleagues are on hand to support throughout the workshop.



Session overview:



This workshop will look at the original theory of personal assistance being a reality, an opportunity to discuss what we want to see moving forward and determine how a sliding scale of support makes personal assistants more accessible to all.

Panel Member

- Tracey Knatt – Integrated Care Board
- Dave Humphries – Parent/Carer
- Michael Grimmett – Direct Payment user
- Topaz Duncan – Personal Assistant
- Paul Tavender – Hampshire County Council



Tracey Knatt Personal Assistant Workshop



Tracey Knatt
Head of Personalisation and
Personal Health Budget Delivery
All Age Continuing Care
Hampshire & Isle of Wight
Integrated Care Board

I am a registered nurse with more than 40 years experience in many different areas, including acute care, community care, private and charity sectors.

My priority as a nurse has always been to make sure the person remains the central focus and is involved in decisions about them.

I have always been an advocate for enabling and supporting people to live at home for as long as possible and to remain as independent as possible.

I am currently working as Head of Personalisation and Personal Health Budget Delivery for All Age Continuing Care in Hampshire and Isle of Wight Integrated Care Board and am both frustrated that we haven't moved forward as much as we should have with Personalisation but am really excited to be in a specific role now, that will hopefully help to have a considerable impact. Personal Health Budgets can have a huge impact on people being able to live their life in a way that works better for them and in my role, I aim to raise the profile of personalisation, personal health budgets and ensure people have the ability to access them.

On a personal level I love football, cricket and to be fair most sports, and I love music and going to live gigs.

Dave Humphries Personal Assistant Workshop



CASCAIDr

Dave Humphries
Manages CASCAIDr
writing projects. Chair
of Learning Disability
Carer's working group

Dave Humphries is a family carer for his 25 year old step son Joe who has a severe learning disability. As part of Joe's adults services provision he receives a direct payment package and employs a personal assistant.

Dave is a retired police officer who now works for Adult Social Care advice charity CASCAIDr managing their writing projects, he also chairs the Learning Disability Carer's working group and sits on the Hampshire Learning Disability Partnership and Carers Partnership.

Dave also has his own wedding photography business, loves to travel and enjoys spending time with his family and slightly mad chocolate Labrador.

Michael Grimmatt, Personal Assistant Workshop



Michael Grimmatt is a Disabled Person who has substantial lived and professional experience of recruiting and managing Personal Assistants over a period of 22 years, using a mixture of Direct Payments, Personal Health Budget and Access to Work funding.



Michael has been living independently since 2014 and in 2017 gained a Personal Health Budget.

Michael's professional experience is also vast, working for SPECTRUM Centre for Independent Living for over 15 years. Michael's roles within SPECTRUM include; Running and managing a Personal Assistant register, managing the Independent Living Team in Southampton providing peer support to Disabled People, managing SPECTRUM's Payroll service, managing a Support Planning pilot in Southampton producing personalised / strength based support planning and much more.

Find out more about Spectrum here: www.spectrumcil.co.uk

Topaz Duncan, Personal Assistant Workshop



Topaz Duncan has worked as a personal assistant in care for almost 5 years, within that time working for a care agency for around a year.

Topaz has worked with people who have a wide range of conditions, disabilities and abilities.

Topaz really enjoys building relationships with people and families of the people who he works with. It is important to Topaz to support people to live as independently as possible for as long as possible

Paul Tavender, Personal Assistant Workshop



Hampshire
County Council

Paul Tavender is a District Service Manager for Hampshire County Council's Physical Disabilities Service.

He has worked in statutory services since 1999, prior to qualifying as a registered Social Worker in 2007.

He brings experience of working with and using Direct Payments and Personal Assistant's both professionally and personally.

Feedback



If you have any questions or feedback regarding the Independent Living Conference on 16 November, please email:

AHC.Coproduction@hants.gov.uk

We will also email you a feedback survey after the event.



FEEDBACK

ILC

Independent
Living
Conference

Celebrating 40 years of
Independent Living in Hampshire

This session has ended