

Minutes, Presentation Summaries & Partner Updates

Hamble Estuary Partnership Meeting - 11 July 2025 at Warsash Sailing Club

Attended by:

Simon Bray – HEP Chairman
Alison Fowler – HEP Officer
Nick Davis – Southern Water
Joff Edevane – Southern Water
Jason Masters – Southern Water
Ricky Short – Southern Water
Dom Longley – Environment Agency
Eloise Mott – Bird Aware Solent
Tom Gurd - Botley Parish Council
Luke Helmer – Blue Marine Foundation
Barney Hobbs – Blue Marine Foundation
Steve Holes – Bursledon Parish Council
Viv Holt – BurrIDGE & Swanick Residents' Assoc.
Rachel Wyld – Carter Jonas, agent for The Crown Estate
Alexander Davidson - Carter Jonas, agent for The Crown Estate
Katherine Alger – Fareham Borough Council (Planning)
Ian Underdown – Hamble Parish Council
Jim Hobson – Hampshire County Council (Countryside Service)
Keith Honeychurch –HCC (Access/Rights of Way)
Paul Tossell – Lymington Technical Services
Jason Scott– River Hamble Harbour Authority (RHHA)
Tony Blewett – River Hamble Mooring Holders' Assoc.

Stuart Henderson - Royal Yachting Association
Kate Ansell – Solent Forum
Hester Churchouse – Southern IFCA
Paul Hobbs – Warsash Residents Assoc.

Apologies Received:

Joe Bassett – (HCC) River Hamble Country Park
Tim Ferrero – Hants & IOW Wildlife Trust
Jackie Mellan – Environment Agency
Hedge End Parish Council
Julie Satchell – Maritime Archaeological Trust
Anthony Gallagher
Peter Taylor – Environment Agency
Coastal Partners
Paul Howe – Eastleigh Borough Council (Ecology)
Richard Ritchie – Cruising Assoc.
Marina Rees – Natural England
Eva Turley – Marine Management Organisation
Martyn Shears - HCC volunteer & RSBP (stepping down)
Lauren Burt – Coastal Partners
Andy Aitken – HCC (Access/Rights of Way)
Ben Lippiett – Boatfolk / Hamble River Boatyard/Marina Operators' Ass

Kate Fortnum – Royal Yachting Association/ The Green Blue

1. Welcome

Welcome given to new representatives of member organisations, and a note of thanks to two long-standing representatives stepping down (John Selby - RYA. Martyn Shears - RSPB and HCC volunteer ranger).

2. Update since last meeting – HEP Officer

HEP and Coastal Partnerships format - Recap was given of the structure, function and limited funding of the HEP, and a reminder of the process of Partner Updates. Minutes of meetings and Partners Updates are circulated and made available online for members to share within their own organisations to increase knowledge and interest.

ALL present gave consent to receive HEP communications as part of the distribution list with email addresses visible, as before. (Contact HEP officer to be removed).

Explanation given of the role larger coastal partnerships of [Solent Forum](#) (Regional) and [Coastal Partnerships Network](#) (National) and wealth of valuable information available through their websites, particularly the [Solent Forum - Information Hubs](#) . Sign up for monthly Solent newsletters, or view the biannual one here https://www.solentforum.org/publications/solent_news/SNews_Issue_58_Final.pdf

M27 bridge drainage – additional requirements for strengthening the structure as well as the work to the deck waterproofing, strengthening for abnormal loads, joint replacement, bearings maintenance, concrete repairs, painting, and drainage whilst reducing impact upon road users and the river below is being progressed by National Highways with consultants. Provisional funding has been allocated under RIS 3 (2025–2030). Any updates will be provided at next meeting.

Kate Ansell highlighted the 2024 UN foresight brief on [vehicle tyre particles in the environment](#).

Blue Green Algae - Reports this Spring of the suspected presence of blue green algae (BGA) in the upper Hamble estuary near Botley. There was no testing of algae by the Environment Agency to confirm its presence, but EA has taken a precautionary approach and advised the local authority to erect public warning signage advising that people and pets avoid contact with the algae as it can cause various health issues. Blooms can last from days to several months, so vigilance is required. Anyone who believes they have been affected by blue green algae should seek medical advice immediately. Sightings of BGA can be reported to the EA on 0800 807060. Tidal exchange and natural weathering processes can help dilute

and disperse pollution and algal blooms, however, decision to use the Hamble estuary, as with any water body, remains a personal decision for the participant having considered the information available.

Proposed changes to Marine Licencing exemptions and fees - MMO has launched a public consultation until 15 August. <https://consult.defra.gov.uk/marine-licensing/marine-licences/>

New Data Map: The Solent Seascape Project has launched a new GIS data explorer map ([Solent Seascape - State of Nature Data Explorer](#)) with hundreds of map layers e.g. bait digging areas, water quality sampling points, storm overflow points, various activity areas, modelled underwater noise, bird roosting/nesting sites, habitat restoration sites, infrastructure, physical data, historic saltmarsh extents, mean high water mark and many more. The video guide ([State of Nature Data Explorer Tutorial](#)) uses the Hamble.

ACTION: **ALL MEMBERS to continue or improve circulation of HEP minutes and relevant information, including provision of the HEP website link in their own communications.*

ACTION: **HEP Officer to review and update HEP website.
HEP Officer to review and update Student Research Fund pages.*

3. “Hamble’s estuarine fish and survey findings” - Dom Longley, Environment Agency:

See HEP website for presentation slides. DL described the techniques and results of the EA’s estuarine fish monitoring programme from 2007-2024. This is conducted at both Upper Hamble Country Park and at Swanwick Hard, as part of the Water Framework Directive “Transitional and Coastal” (TrAC) Waterbody monitoring of 30 UK estuaries. Both seine net and a beam trawl technique are used in the Hamble to give robustness to methodology and data.

Results are dominated by sea bass, highlighting the importance of the Hamble Estuary as a designated Bass Nursery Area. They breed at sea in deep water then larvae drift with currents into inshore coastal waters where they require good water quality and food for growth which occurs more rapidly with warmer temperatures between Spring and Autumn. Sand smelt (important prey for fish and bird species), common goby and sand goby are the other most common species, followed by herring, sprat and 3 mullet species. Occasional flounder, pipefish, eel, seahorse, wrasse and stickleback are among the other species found in lesser numbers. Sand smelt breed in estuaries and move offshore in winter. Common goby are resident year-round and breed in the estuary. Herring and sprat are another important food source for other species.

Changes over time – Between 6 to 13 species have been found in each survey year, with a total of 25 spp over the 18 years combined. Species recorded often reflect the conditions last winter due to the strong influence of temperature on population numbers/success. Gilthead bream are becoming more common and climate change is expected to increase their numbers. No flounder caught in surveys since 2014 and they have seemingly disappeared from local estuaries. Colder winters are better for flounder, whereas bass do better in warmer winters. Salmon populations (monitored in the Test and Itchen) are approaching a state of collapse and are incredibly sensitive to water quality, temperature and are subject to poaching. Sea trout in the Hamble are doing well, especially since the introduction of fish pass at Botley Mill. The increase in pacific oysters (not monitored by EA) has potential for habitat alteration.

Members discussed species changes and tolerances. DL also explained that blue green algae presence is driven more by sunshine hours than by temperature. DL confirmed the fish surveys monitor a range of determinands including temperature, dissolved oxygen, conductivity. All fish survey data is available at <https://environment.data.gov.uk/ecology/explorer/> (Southampton Water catchment, including Hamble).

4. “Storm overflows, environmental delivery plan & task force” and “post-incident update on Warsash burst sewer”. Nick Davis, Joff Edevane, Jason Masters, Ricky Short - Southern Water.

Incident Summary: On 14 June 2025, a burst occurred on 450mm rising main which conveys flows from School Lane Hamble Wastewater Pumping Station (WPS) to Hook Park WPS resulting in wastewater discharging into the River Hamble at Warsash and surrounding areas including saltmarsh and a public footpath.

Immediate response and mitigation included 34 tankers deployed to manage wastewater and prevent further discharge. Hay bales were used to channel flow direction and to provide screening. Key pumping stations were shut down to halt flow through the damaged pipe. Two further short (30 min) duration discharges occurred on 15 June due to peak flows and were reported to the Environment Agency.

The damaged section of glass reinforced plastic pipe was excavated to its 3m depth, surveyed, replaced, successfully tested and returned to operation by 18 June. CCTV inspections showed no further damage. Site reinstatement and footpath repairs began on 20 June.

Daily river sampling was conducted by Adler and Allan 14-20 June. Dispersion modelling and sampling confirmed no restrictions were needed for bathing or shellfish waters. Regular updates were provided to the relevant authorities. An aquatic ecologist assessed the saltmarsh on 16 June; findings will be shared with the Environment Agency and Natural England.

Members questioned the reasons for the failure (pipe age) and expressed concern over risk of future failures and the patch-repair approach, questioning the long-term plan and solutions, and stated that public health messaging was slow. SW were asked the expected life span of the plastic pipe under the river and responded they would come back with this information. Members discussed the new housebuilding and pressure on the infrastructure. Southern Water advises planning authorities when determining development of when SW are planning to upgrade systems, but it cannot stop the public right to connect to a network. SW explained how it proposes improvements (see next section) and how Ofwat determines the bills SW can charge.

Storm Overflows in the Hamble Catchment:

Joff Edevane, Environment and Water Quality Lead highlighted how SW is planning to address storm overflows in the Hamble catchment. The Clean Rivers and Seas Task Force (est. 2021) aims to reduce storm overflows to protect the environment by delivering projects – see interactive map at <https://www.southernwater.co.uk/about-us/our-plans/clean-rivers-and-seas-plan/> Drivers for change include environmental and ethical consideration plus increased extreme weather, de-greening of land (i.e. increases in less permeable land), Government's Storm Overflow Reduction Plan and customer feedback.

Timeline: 2021–2024 Task force was setup, funding secured (£52M total), and plan launched. 2025–2030 (AMP8) - Focussing work on priority areas, reducing storm overflows and those near shellfish beds and bathing waters. Ways to reduce storm overflows include source control, infrastructure optimisation, stormwater treatment and, less preferable, building larger infrastructure. SW is also working on nature-based solutions using wetlands and reedbeds, although some resistance from EA and NE.

Hamble-Specific Actions: Surveys underway on the local network to inform solutions, starting with infrastructure optimisation and source control. The focus is on School Lane storm overflow near Hamble Copse, with an obligation for a max of 10 spills p.a. by June 2027 or face prosecution. Another key aspect is investing in technology to harness AI for real-time flow control and utilisation of storage. Optimising unused storage tanks at Bursledon and Ensign way, and any others, will help flow capacity and the bottle neck at School Lane.

Transparency is important regarding storm overflows and the environment, so SW has made notable improvements to Beachbuoy and have released our new service, Rivers and Seas Watch platform for real-time overflow data as well as investment projects in this area. [Rivers and Seas Watch](#)

Members discussed utilisation of old storage tanks at Netley, Bursledon and also Botley STW, as well as consideration of impact on existing SW assets of proposed gravel extraction pit at Hamble.

See HEP website for presentation slides.

Post-meeting update: SW hosepipe ban announced – see SW's Partner updates.

6. Planning & Development: None raised.

7. Partner updates from each member organisation: A wide and interesting range of updates were given – see Appendix 1 below.

8. Next meeting: Date TBC likely Winter 2025/26. The following were suggested for future meeting presentations: Oil Spill Planning and Response, Beneficial reuse of dredged material, Update from Blue

Marine Foundation on its restoration projects for native oysters and saltmarsh, Update from Hampshire & IOW Wildlife Trust on its restoration Seagrass Project.

9. **AOB:** None

.....

Appendix 1: Partner Updates for Hamble Estuary Partnership meeting: 11 July 2025

Bird Aware Solent: Eloise Mott, Ranger

Since the last meetup, the Bird Aware Solent ranger team has had a busy winter season engaging with the public about migratory bird species. Alongside site patrols on the river Hamble, the team also hosted many guided birdwatching walks, photography walks and a session for a Warsash Squirrels group. Our sister project, Coast and Country Canines also recently hosted their first ever event at the River Hamble Country Park. A Dog's Day Out was a huge success, and the team look forward to hosting it again in the future.

Boatfolk – Ben Lippiett

Deacons Marina in partnership with Portsmouth University, we have introduced some seabass nurseries under one of our hammerhead pontoons. We will watch with interest to see the benefits that these can bring – with marine biologists from Portsmouth Uni carrying out ongoing analysis.

Blue Marine Foundation (Solent Seascape Project) – Luke Helmer

Oysters The reef at Swanwick bend has been extended and now covers an area around 0.5ha in size. With help from 140 volunteers over three days, a further 10,545 adult oysters were cleaned and placed in the new area in May, taking the total number of oysters on the whole reef to 31,073. A further 10,000 will hopefully be sourced and placed on the extended area later in the Autumn. Monitoring is scheduled for July this year and coupelles (spat collectors) have been placed at the reef and control sites to monitor recruitment over the summer months.

Saltmarsh Trial barriers remain in place, some doing better than others and this seems to be related to creek profile, with 'V' shaped deeper creeks being undercut with the flow of water. Monitoring is ongoing.

MMO licencing - The MMO is currently consulting on Marine Licensing fees, exemptions and banding, and this is a great opportunity for the restoration community to make itself heard regarding the debilitating costs of the marine licensing process, please do respond. [Marine licences: changes to fees, exemptions and self-service licences - Page 1 of 35 - Defra - Citizen Space](#)

Botley Parish Council – Cllr Tom Gurd

We have significant pollution problems happening in the river above Botley Mill. The EA have advised EH to issue a public health warning to users of the estuary due to the presence of a BGA bloom upstream. This situation has been escalating now for some time & impact is becoming more visible. We have several examples of uncontrolled & unlicensed sewage releases reaching the watercourse during normal rainfall. This algae bloom coincides with significant increases in unlicensed sewage pollution.

I am collaborating with all stakeholders; SW to seek resolution & identify barriers, EA & OFWAT to enable enforcement where releases are not via licensed outflow, which is regular. We will seek investment for regeneration as soon as the pollution sources are addressed.

Cruising Association – Richard Richie

The Cruising Association continues to lobby either RYA and Inland Waterways on the availability of HVO as the most appropriate medium term carbon reduction approach for pleasure vessels.

Eastleigh Borough Council – Paul Howe

We have adopted our revised biodiversity strategy and action plan (pending a few delegated tweaks) and have provided a response to the County Local Nature Recovery Strategy consultation. We are also hoping to sign agreement to deliver 21ha habitat bank on our land at Botley (adjacent to the Hamble) in September all being well.

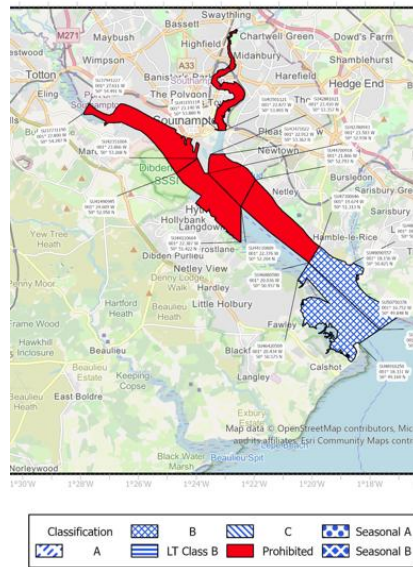
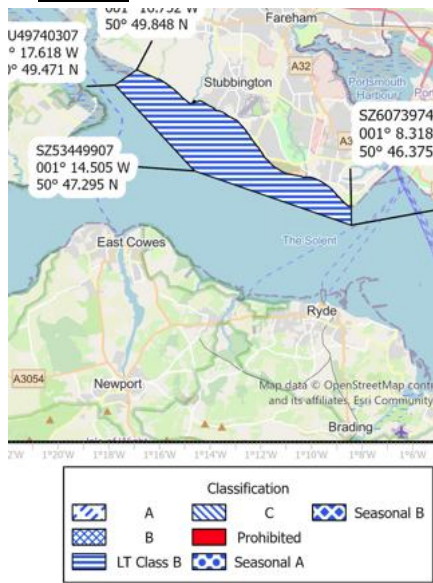
Environment Agency - Peter Taylor, Catchment Co-ordinator

Current status of Hamble estuary area is below.

Still using WFD (Water Framework Directive) for an overview of the water environment (Good, Moderate, Poor, Bad). The monitoring results of this year 2025 will be used to form the basis for next year’s classification and the 4th River Basin Management Plan. In WFD, Hamble Estuary is part of Southampton Water waterbody.

Elements of water environment that are not yet in good condition:

- Dissolved Inorganic Nitrogen: Moderate fail
- Macroalgae: classifications rated as "Good" for both 2019 and 2022. However, if the Hamble estuary were assessed separately from the rest of Southampton Water, the results might differ, as seen in historical assessments under the Urban Wastewater or Nitrate Directives. Modelling and the [Overview of Solent Eutrophication & Recovery](#) report indicate that we can expect a gradual improvement in macroalgae conditions. According to our monitoring tracker, our next visit to Southampton is scheduled for 2026. However, due to nationwide affordability issues, there are now strict constraints on macroalgae monitoring, making it uncertain whether it will be conducted for WER (WFD).
- Hazardous chemicals, e.g. mercury, fire-water retardants in the water column.
- Mitigation Measures not in place (not location specific) removal/ softening of hard engineering, restore degraded bankside habitats.
- Shellfish



Main issues for status of shellfish is water quality, overfishing, non-natives.

Status of the Shellfish Waters and Beds depends on quality of water and shellfish flesh.

Food Standards Agency provide the analysis of shellfish flesh. The faecal pollution that affects shellfish has a short range so the Southern Water investment in UV disinfection at Milbrook and Slow Hill Copse back in 2023 should lead to an improvement.

- u/s Shellfish Waters are Unclassified (fishing stocks low)/ Prohibited high ecoli/ intestinal enterococci, while;
- d/s is B (i.e. shellfish need heat treatment to be edible).
- Bathing waters Are in relatively good condition, as in the outer estuary. Also measure for ecoli and intestinal enterococci.



Technology – installed December 24

Fluidion pollution monitoring equipment installed by EA and Cefas at Ocean Village to track bacteria (e-coli), which is indicative of sewage. Also tracking forever chemicals. Fluidion used on the Seine during the Olympics.

Deployed with traditional real-time WQ instruments from the National Instrumentation Team to understand contamination and patterns.

Two Passive Sampler Devices deployed to monitor nonpolar organic compounds and metals, PFAS synthetic chemicals.

Aim to provide data framework to monitor coastal marine organism health.

Volunteers – Friends of the Itchen. Taking samples from canoes etc to better understand. EA using the data.

Hamble Parish Council - Ian Underdown

IU announced the sad passing of Ray Sedgwick at aged 88, Hamble's ferryman for over 60 years. A well-known and much valued local character who gave much to our community. IU reported on the annual meeting with the police regarding antisocial behaviour at Hamble Jetty, but was disappointed with the police recollection of last year's occurrences. HPC has been approached by a company wishing to trial the hire of paddleboards and kayaks from the Hamble slipway.

Hampshire & IOW Wildlife Trust – Tim Ferrero

We planted a very small test patch of seagrass seed in the Hamble in April and we're monitoring it closely to see how it gets on, and will update at next meeting.

Hampshire County Council, Rights of Way. Keith Honeychurch

Completion of the footpath improvement and signage to create the circular low tide loop through Bunny Meadows, Holly Hill Woodland and Wendleholme.

Lymington Technical Services – Paul Tosswell

Successful beneficial disposal of dredged material in Medina has taken place and is planned to be repeated. We (LTS is only small part of the team) have established a practical method that would suit many areas, including the Hamble. However, despite beneficial disposal being 'encouraged' by the MMO it is difficult to get agreement from other consultees (excluding Harbour Authorities who are generally supportive). A similar BUDS proposal on the Hamble (linked to a new dredge application) has been withdrawn due to a lack of support for the BUDs aspect.

Marine Management Organisation – Eva Turley (South Coastal Planner)

- We have just published our 3-yearly statutory monitoring report for the Marine plans, you can find the South Marine plan report here- <https://www.gov.uk/government/publications/south-inshore-and-south-offshore-marine-plan-three-year-report>.
- Defra have launched a consultation on marine licensing efficiencies to support the Government's growth agenda and nature recovery priorities. To streamline and improve marine licensing, Defra wish to gather views on proposed amendments to marine licensing cost recovery, exemptions, and 'self-service' licences. We encourage

interested stakeholders to respond by clicking the link below [Marine licences: changes to fees, exemptions and self-service licences - Defra - Citizen Space](#).

- Please see also our brand new marine planning video that is now available to watch on YouTube – [Marine plan policy assessment in decision-making](#). This short and informative video is designed for applicants, decision-makers and other marine plan users.
- [Marine Planning Newsletter](#) – here you can stay up to date with the latest marine planning news or subscribe to receive the newsletters directly.

Maritime Archaeological Trust – Julie Satchell

A standing reminder that if there are any planned works or activities that might mean physical changes to any of the hulks, hards, landing places, shoreside structures etc, then their historic value should be considered. Also, the river holds an important submerged prehistoric landscape and peat deposit archive, so again anything that might disturb these sub surface deposits should have heritage consideration beforehand.

Natural England – Rohan Smith/Marina Rees

Planning consultations so far in 2025:

- We would like to encourage use of the Coastal Concordat by the combined authorities to improve efficiency and reduce both time and cost involved in the protected sites consultation process.
- Only one case to date, related to Warsash-located Capital & Maintenance Dredge with Disposal & BUDs use.

Enforcement and Compliance:

- Natural England have progressed the work related to enforcement and restoration of areas breached on the Lincegrove and Hacketts Marshes SSSI. As of June 2025, the parties involved have acceptance of Enforcement Undertaking which includes the need for the work to be expedited and completed urgently.

The following updates would be of interest to the group:

- Natural England will be working on condition assessment for Solent and Southampton Water SPA and updating the already published condition assessment for Solent Maritime SAC this year. If anyone has any new data that they consider would be useful to support this please do e-mail it over.
- Protected Sites Strategies (PSS) are currently in development nationally, with five pilot projects underway and more expected during the research phase (2025–2030). Although there are no PSS in the Solent yet, Natural England encourages local stakeholder input and collaboration. Included in the development of Protected Site Strategies', as this work is still in early stages, is the reviewing and learning lessons from existing related projects such as nutrient neutrality work developed in Solent. In addition, independent of PSS, the Solent Seascape Recovery Plan is also being developed, and it will be important to see how this work develops to ensure that a PSS would not just duplicate effort. PSS advisory guidance is in progress and will be shared once available. A recent Natural England blog post provides more context. <https://naturalengland.blog.gov.uk/2025/06/16/protected-site-strategies-problems-shared/>

River Hamble Harbour Authority: Alison Fowler & Jason Scott

- The Maritime and Coastguard Agency has issued an updated version of the Port Marine Safety Code. This important document guides Harbour Authorities in the execution of their functions, duties and obligations. The revision is evolutionary and also raises the responsibilities of marine facilities such as marinas and boatyards.
- Warmer weather and the school holidays are expected to bring with them a resurgence of anti-social behaviour at the usual points around the River. Hamble Quay and Lands End are the regular target areas. Hampshire Police held a preparatory meeting with Hamble Parish Council, Eastleigh Borough Council youth options team and the Harbour Authority to plan for disruptive events. As ever, the key police message is for members of the public to report any incidents of concern via 101 or 999. The Harbour Authority has no special powers to deal with ASB, which is criminal activity.
- Waiting lists for Crown Estate moorings remain healthy. The Harbour Authority is working with the Crown Estate to take advantage of the limited opportunities to modify small parts of the existing Crown mooring pattern to reduce the number of vacant smaller moorings and meet customer demand.
- The Hamble Valley Regatta (formerly the Swanwick, Bursledon and Warsash Regatta) will take place during 30 and 31 Aug 2025.

- In line with Merchant Shipping (Oil Pollution Preparedness) Regulations 1998, RHHA staff have undertaken training renewals, a practical booming exercise, and received an audit from the MCA.
- RHHA continues its practical and advisory support to a variety of environmental research projects including the next lay of the native oyster restoration reef, enhancement of saltmarsh and improvement of water quality.
- Ongoing work and consultation with fellow regulators continues in respect of 3rd party development and maintenance proposals, along with RHHA's subsequent management of consent applications.

River Hamble Mooring Holder's Association – Tony Blewett

High cost of dinghy storage ashore - The association is very concerned that this is making mid-river moorings less attractive. Crown Estate moorings for smaller boats are now readily available, suggesting reduced demand. Younger people may be discouraged from boating due to overall mooring costs. Three low-cost dinghy storage options exist but have limited car parking: Warsash Ballot, Hamble Parish dinghy park, and Swanwick Hard but the latter (30 tenders) is at risk due to Fareham Borough Council's "adverse possession claim" at the Land Registry, which is being opposed by the "Swanwick Tenders" users.

Algae - Heavy green weed mats in the River Hamble can occasionally block engine cooling inlets. Decomposing weed mats cause odour, insect problems, and oxygen depletion in water. Likely cause is high phosphate/nitrate levels from agricultural runoff and poor sewage treatment works performance upstream as well as unauthorised foul sewer overflows, which when it rains heavily are frequent occurrences and may well be, long term, cumulative in their effects.

Safety Risks on the Water – Our members frequently see seriously risky incidents where novice paddleboarders and canoeists lack basic safety knowledge, are seen without buoyancy aids and unaware of maritime navigation rules. Our view is that risks would be slightly reduced if the harbour speed limit was written as the lower of the speed through the water or that over the ground. The minimum size of wash rule also needs to be stronger as many motorboats produce a bad wash even when proceeding well below 6 knots.

Pump-Out Facility Costs - Some of our members have fitted their boats with blackwater holding tanks but the cost of most pump out facilities discourage the best use of them.

Royal Yachting Association/ The Green Blue – Kate Fortnum

RYA's continues efforts to promote sustainability and environmental stewardship within the boating community. Current focus is on 3 key themes:

Water Quality - Clean Water Sports Alliance (CWSA) to advocate for better water quality and seek for the government to focus on key activity areas not just bathing beaches. Also, building data on the current situation, pollution risk and waste challenges from end-of-life boats. Report any at <https://thegreenblue.org.uk/you-and-your-boat/info-and-advice/report-end-of-life-boat/>

Climate Change – vessel decarbonisation, clubs' carbon reductions, electric boating, HVO fuel, education.

Biodiversity – Invasive species and biosecurity. Seabed protection from anchoring including aim to get sensitive habitats mapped on electronic charts.

Solent Forum – Kate Ansell

- Karen McHugh left the Solent Forum at the end of January 2025 and Kate Ansell is now the Solent Forum Manager full time.
- Phil Horton is the new Solent Forum Chair until at least 2028. Phil is the Sustainability and Utilities Manager at the University of Portsmouth. He was previously the Sustainability Manager at the RYA.
- The Solent Forum has a new Business Plan - https://www.solentforum.org/about/business_plan/Business_Plan_2025_to_2030/.
- We are in the process of commissioning BuDS Solent Phase 4 which will look to create a new dredging disposal site at Cockleshell Bay for initial use by Lymington and Cowes Harbour Commissioners.

- We have published our annual report that surveys non licensable activities across the Solent's designated sites at: https://solentems.org.uk/publications/SEMS_ASR_Report_2025.pdf.
- We are currently assisting members with their biodiversity strategies and climate adaption work, ensuring that coast and marine are included. We have been involved with the preparation and consultation of the Hampshire and Isle of Wight Local Nature Recovery Strategies.
- If you would like to subscribe to our ever popular free monthly enews that gives a round up of what is happening around the Solent please email: info@solentforum.org.

Southern Inshore Fisheries & Conservation Authority: Hester Churchouse

The Bottom Towed Fishing Gear Byelaw 2023 was been ratified by the Secretary of State on 7 July 2025, updating prohibited areas for bottom towed fishing gear (BTFG) activity within the Southern IFCA District. Our Shore Gathering Byelaw is currently sat with the MMO for QA – no proposed aspects of the Byelaw and associated documents were changed following the Consultation that ran prior to the previous HEP meeting. Further information about Southern IFCA’s Shore Gathering Byelaw and Shore Gathering Review can be found on our website here: [Ongoing Reviews : Southern IFCA](#).

Additionally, Southern IFCA have completed their Spring round of surveys, including a small fish survey within the River Hamble. Southern IFCA’s survey reports can be found on our website under relevant Fisheries & Research tabs.

Southern water – Nick Davis

See presentations and meeting notes. *Also, post meeting update – hosepipe ban:*

From 9am on Monday 21 July, hosepipe restrictions will come into effect across Hampshire and on the Isle of Wight. We understand these restrictions may be inconvenient, particularly during the warmer weather, but they are a necessary response to the current conditions. These temporary measures are vital to help safeguard our local environment, especially the Rivers Test and Itchen, which play a key role in supplying your water.

This action follows one of the driest springs in over 100 years, which has placed significant pressure on water resources across the region. With ongoing hot and dry weather, water companies are finding it increasingly challenging to treat and deliver water at the rate it’s being used.

We encourage all residents to do their part and follow the restrictions. If you have any questions or would like to check whether your area is affected, please visit [Southern Water’s website](#), where you can find all the information you need.

Warsash Residents Association – Paul Hobbs

PH repeated the difficulties with access to the Hamble-Warsash ferry at the Warsash side, and intends to contact the ferry operator, the HCC Rights of Way Team and Natural England (England Coastal Path), and also The Crown Estate’s agent for establishing the ownership/lease holding.

.....