

Hamble estuarine fish monitoring 2007-2024



Name: Dom Longley

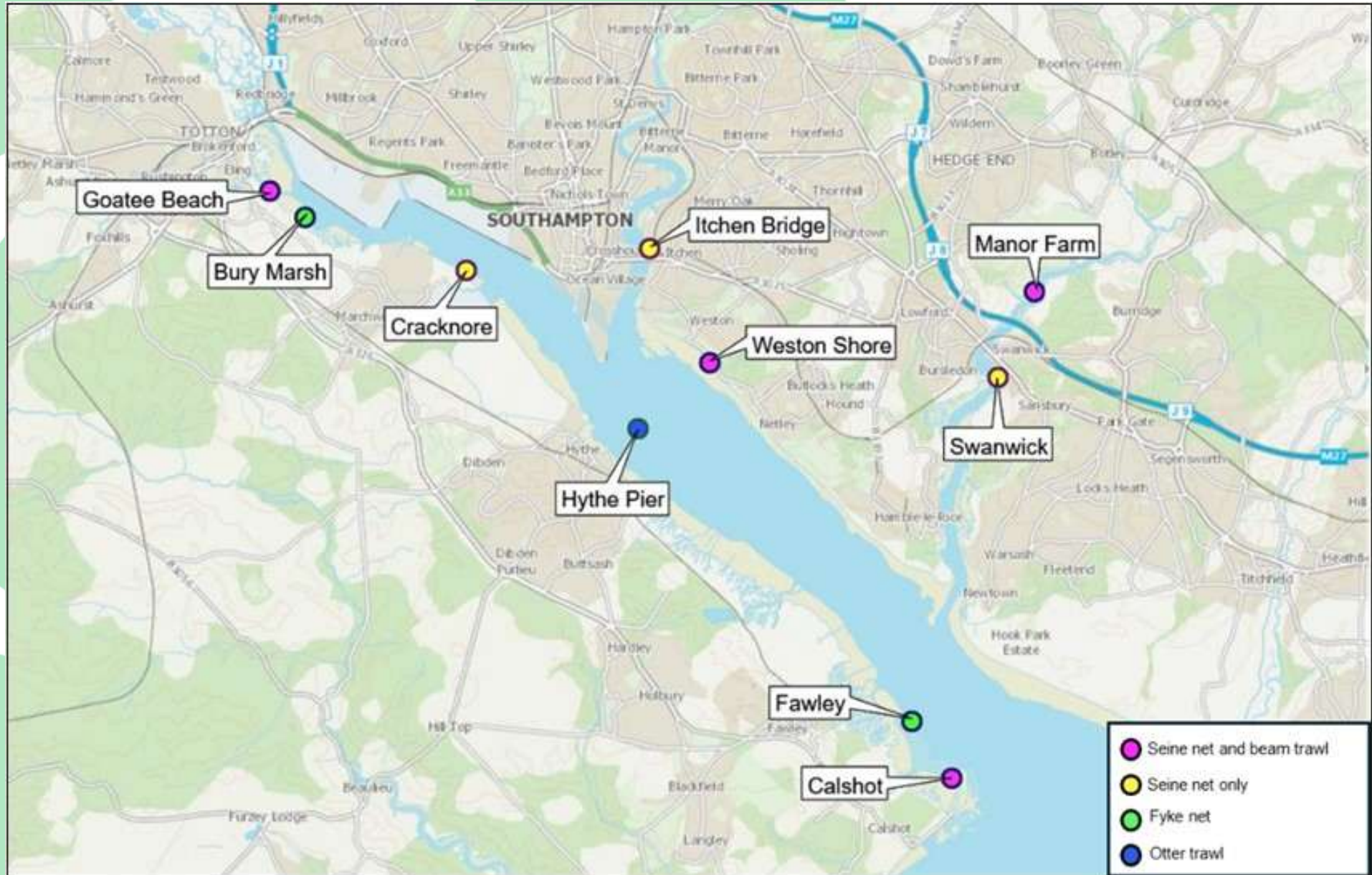
Job title: Fisheries Technical Specialist, Analysis & Reporting,

Why are we monitoring?

- Water Framework Directive “Transitional and Coastal” (TrAC) Waterbody monitoring.
- Roughly 30 estuaries classified around the UK
- Fish are one of many elements in the programme
- 2 x Hamble sites are part of broader Southampton Water programme

Where are we monitoring?

Southampton Water TrAC fish monitoring:



How are we monitoring?

- Multi-method programme needed, to account for bias & habitat type.
- **Method 1: BEACH SEINE**
- **Method 2: 1.5M MINI-BEAM TRAWL**
- **Method 3: FYKE NETTING**
- **Method 4: COASTAL SURVEY VESSEL OTTER TRAWL**



Beach seine



Beach seine













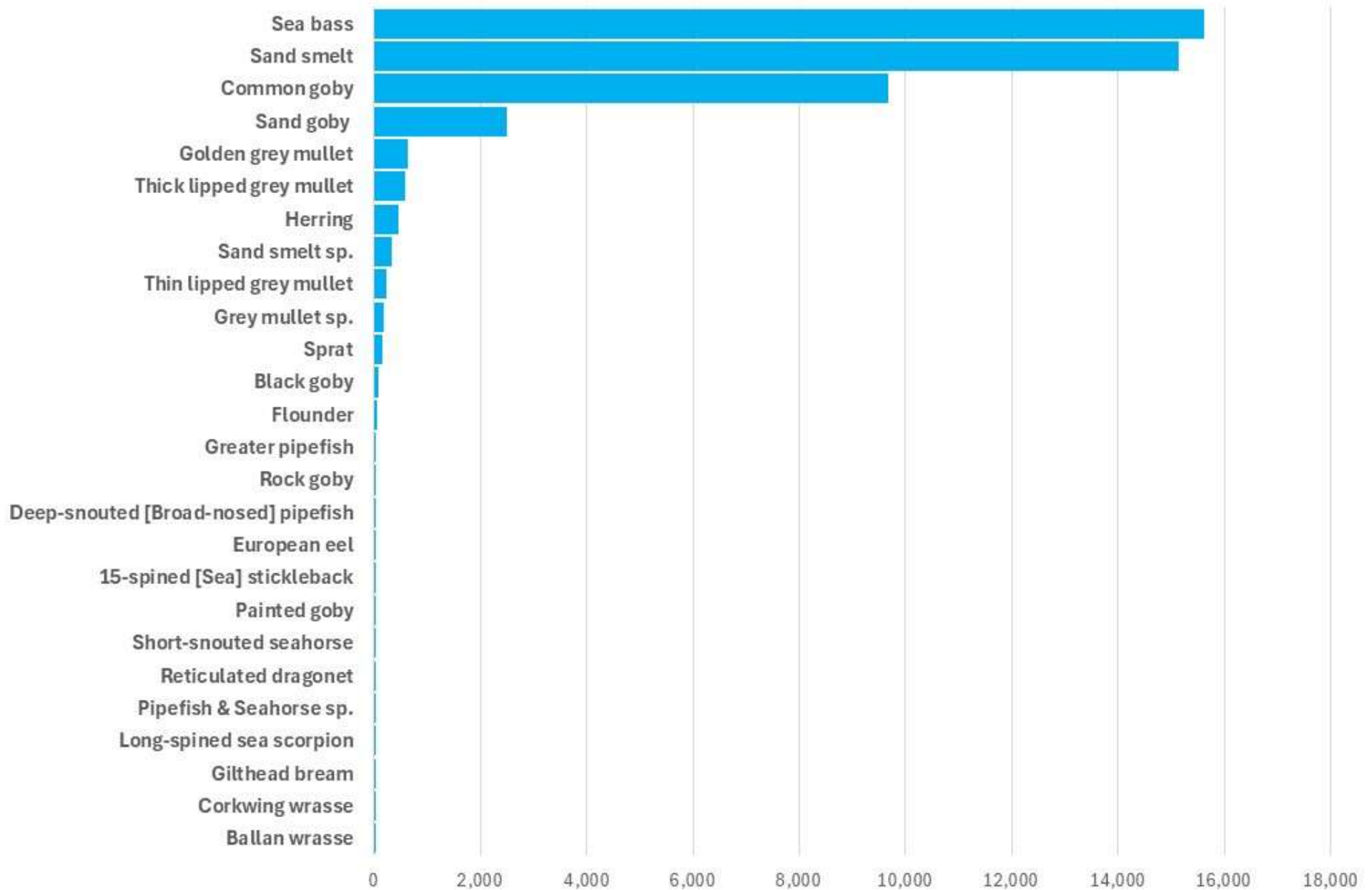
Fyke nets



Otter trawl

***What have we caught at the
Hamble sites?***

Total



Hamble: all species, all sites, both methods, all years



Sea bass, *Dicentrarchus labrax*



Sea bass, Dicentrarchus labrax



Sea bass, *Dicentrarchus labrax*



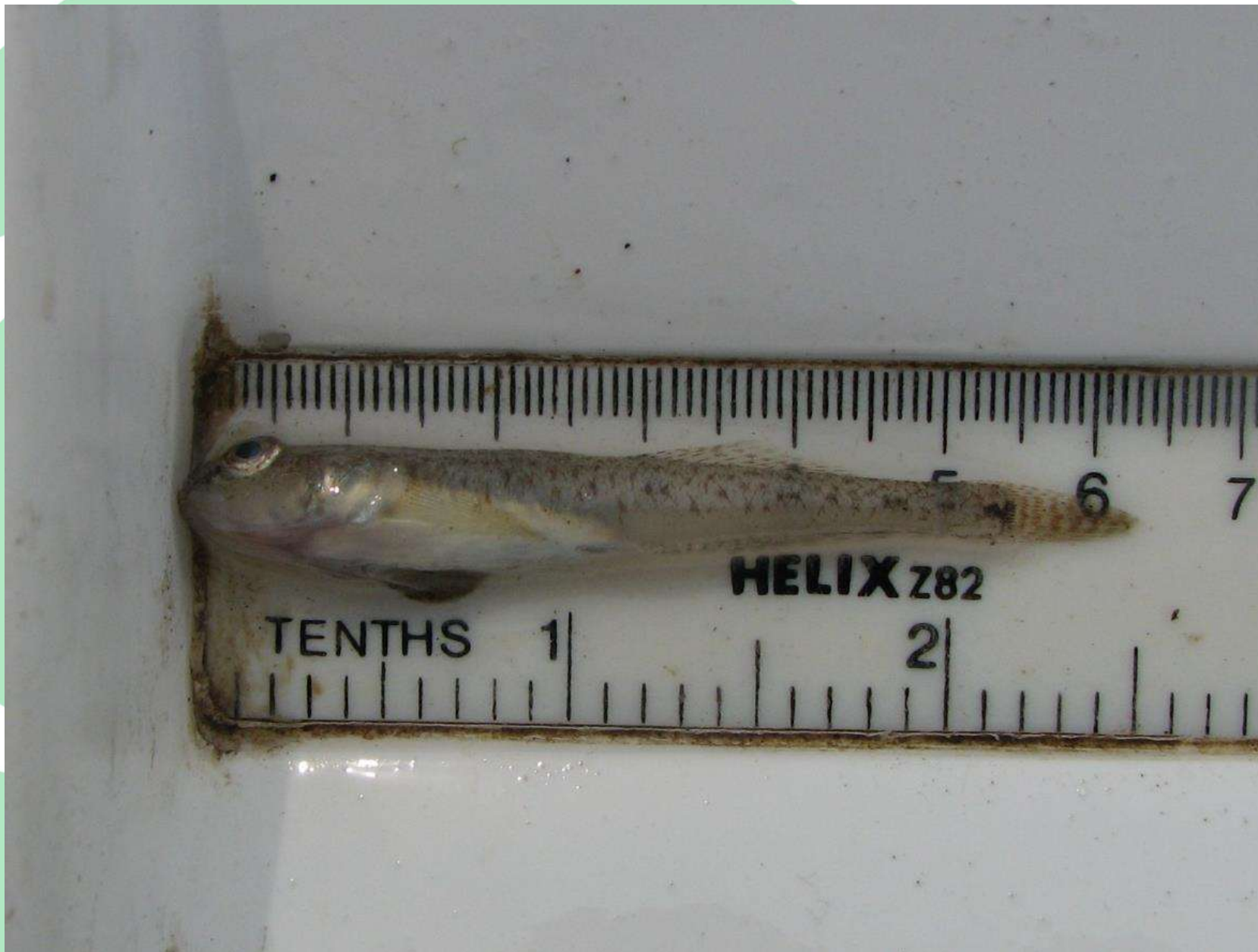
Sand smelt, Atherina presbyter



Common goby, *Pomatoschistus microps*



Common goby, Pomatoschistus microps



Sand goby, Pomatoschistus minutus



Thin-lipped grey mullet, *Chelon ramada*

Golden grey mullet, *Chelon auratus*

Thick-lipped grey mullet, *Chelon labrosus*







Herring, Clupea harengus



A few less-abundant favourites:



Left: short-snouted seahorse, *Hippocampus hippocampus*

Right: long-snouted / spiny seahorse, *Hippocampus guttulatus*



Broadnosed / deep-snouted pipefish, Syngnathus typhle



Greater pipefish, Syngnathus acus



Greater pipefish, Syngnathus acus



Greater pipefish, Syngnathus acus

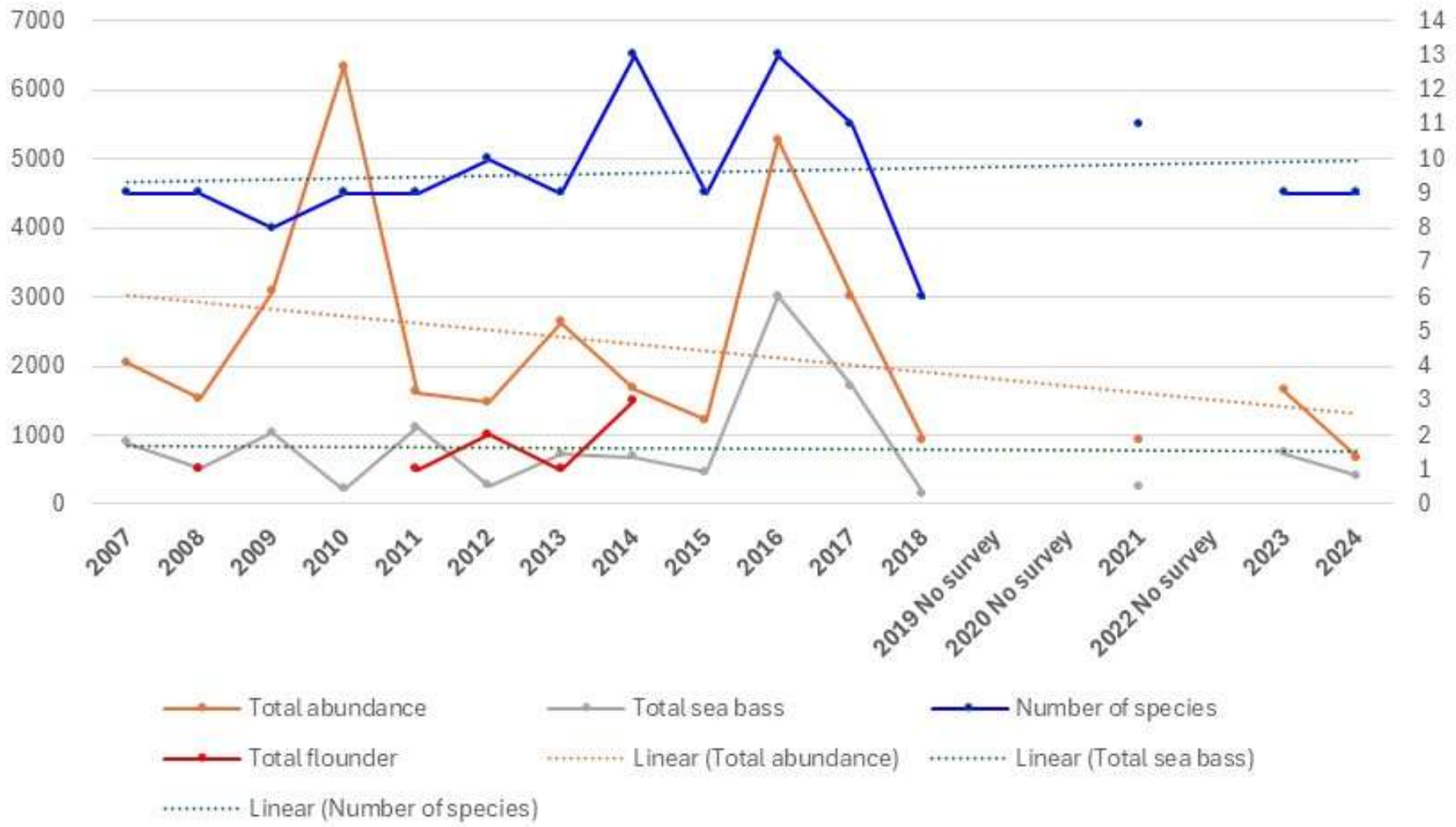


Gilthead bream, Sparus auratus



Bobtail squid, Sepiella owstoni

***What changes have you seen
over time?***



- *Number of species (6-13)*
- *Total fish (670-6,332)*
- *Total bass (146-3,302)*
- *Flounder (0-3)*



*Flounder, **Platichthys flesus***



Flounder, Platichthys flesus



Thanks for your interest!

