

Logistics



Hampshire & IoW



£3.5 billion
To the local economy



5,300
Local businesses



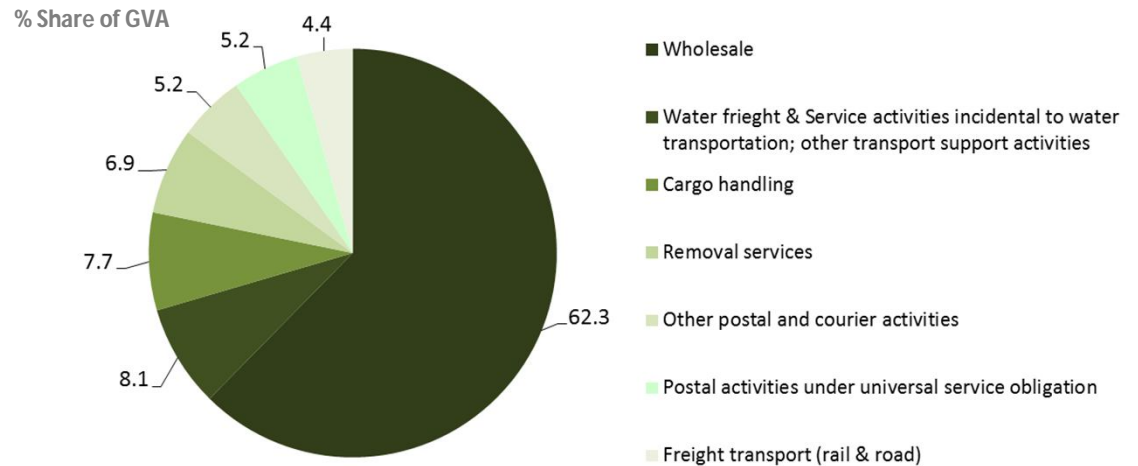
58,600
People Employed

Logistics is an essential enabler for other sectors of the economy. Investment in the UK's railway and airport infrastructure is expected to almost double over the next decade to 2025. Expansion in online consumerism has seen growth in home deliveries driving growth in use of light goods vehicles. Locally, the sector is estimated to contribute £3.5 billion to the economy. There are over 5,000 businesses in Hampshire and the Isle of Wight, and the sector has a percentage employee share higher than the national average.

Size of economy

£3.5 billion

The sector is estimated to be worth £3.5 billion to the Hampshire & IoW economy, with almost two thirds (62%) attributable to Wholesale.



Source: HCC using Annual Business Survey (aGVA, Total Employment) and BRES

Earnings (£ Gross Median Weekly)

Logistics	UK	Hampshire
Freight rail transport	750	780
Freight air transport	630	660
Wholesale of information and communication equipment	630	660
Warehousing and support activities for transportation	560	580
Water transport	540	560
Wholesale of other machinery, equipment and supplies	510	530
Wholesale of household goods	500	520
Postal and courier activities	480	500
Wholesale of agricultural raw materials and live animals	480	500
Wholesale of food, beverages and tobacco	430	440

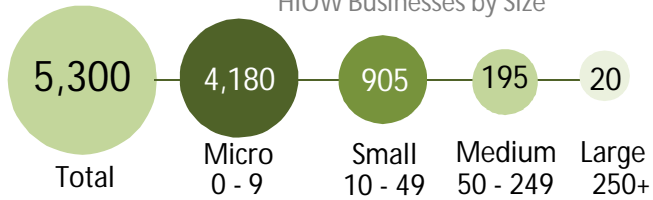
Source: ASHE 2014. Hampshire industry estimates based on a workplace earnings multiplier of 0.03. All earnings rounded to nearest £10.

Logistics

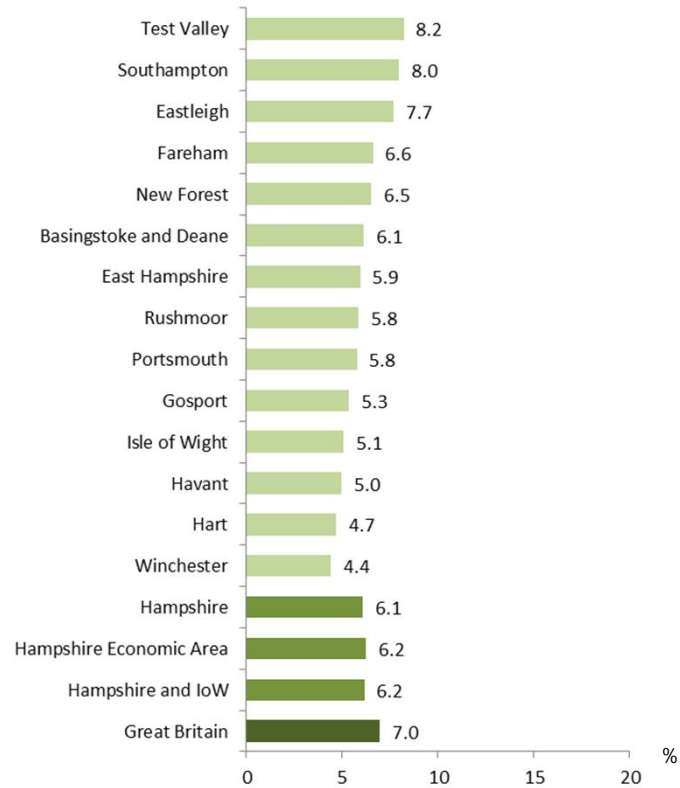


Number of Businesses

HIOW Businesses by Size



Percentage of All Businesses in the Logistics Sector

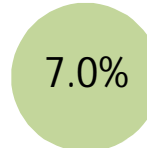


Source: UK Business Counts 2015

Employees



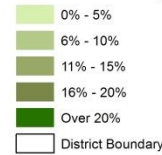
Employees in Hampshire & Isle of Wight



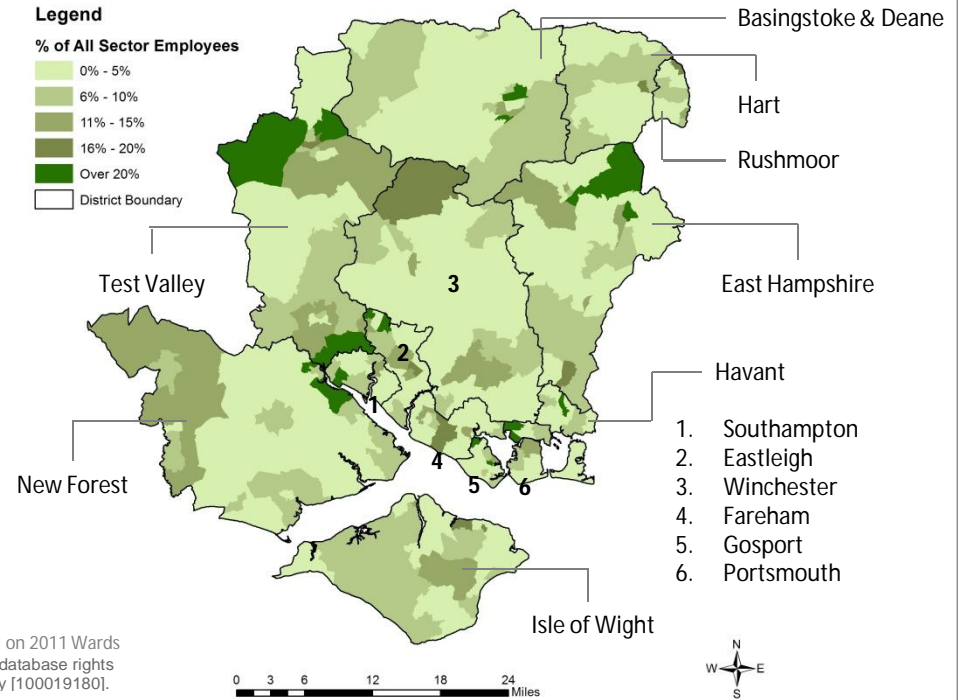
% of all employees in Hampshire & Isle of Wight

Legend

% of All Sector Employees

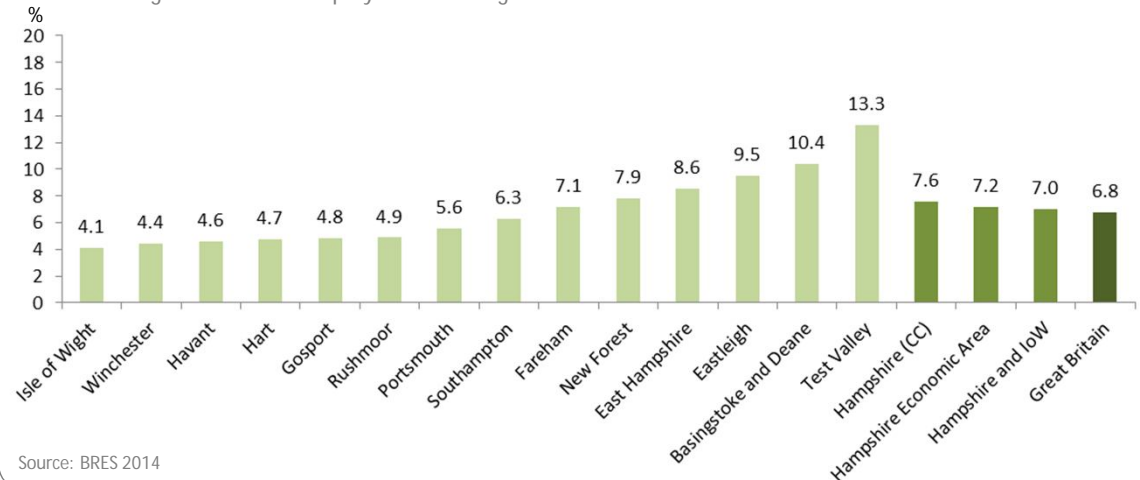


□ District Boundary



Source: BRES 2014
Sub-district areas based on 2011 Wards
© Crown copyright and database rights
2015 Ordnance Survey [100019180].

Percentage of All Sector Employees in the Logistics Sector



Source: BRES 2014