

The 2019 Index of Living Environment Deprivation



Measures:

The 'indoors' living environment - Houses without central heating: The proportion of houses that do not have central heating; Housing in poor condition: The proportion of social and private homes that fail to meet the Decent Homes standard.

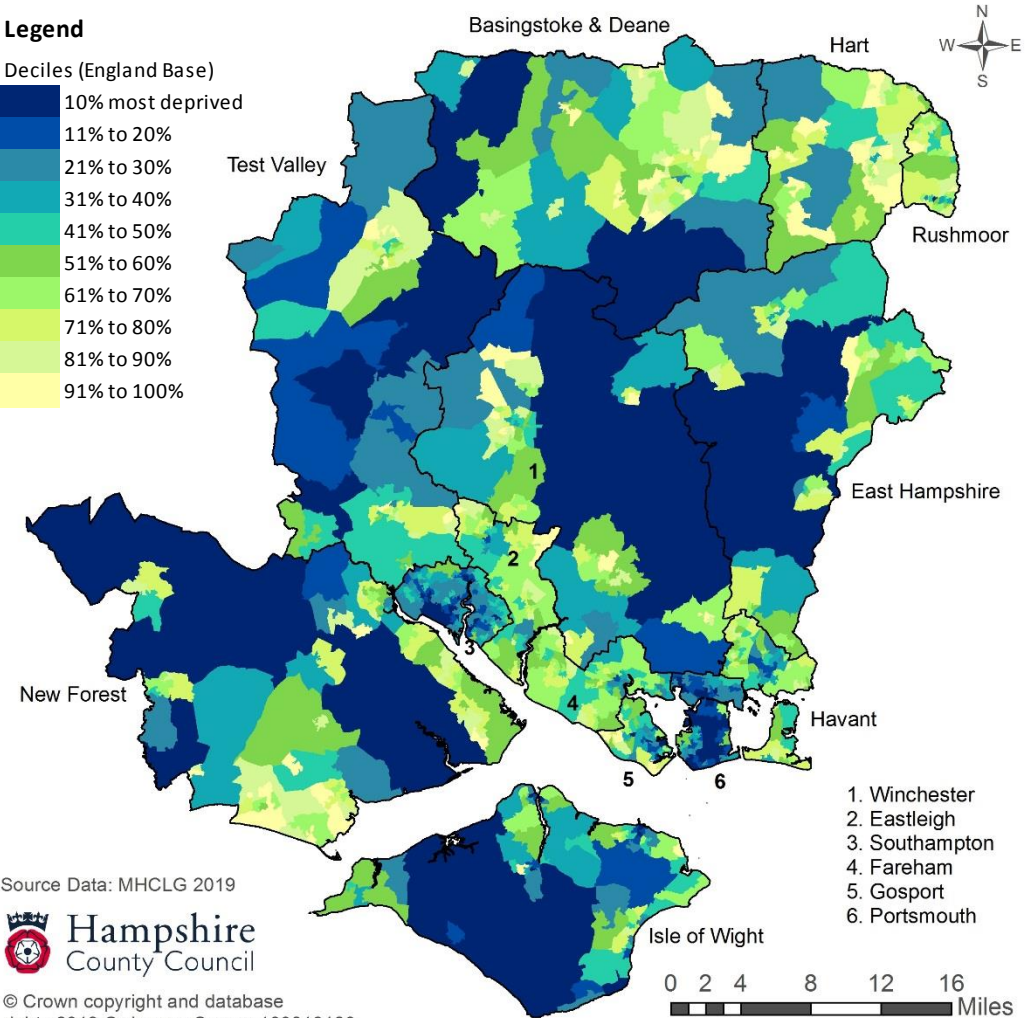
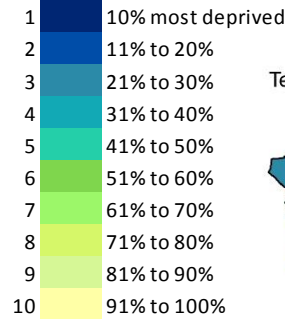
The 'outdoors' living environment - Air quality: A measure of air quality based on emissions rates for four pollutants; Road traffic accidents involving injury to pedestrians and cyclists: A measure of road traffic accidents among the resident and workplace population.

The Index of Living Environment Deprivation measures the quality of individuals' immediate surroundings both within and outside the home. The indicators fall into two sub-domains: the 'indoors' living environment, which measures the quality of housing, and the 'outdoors' living environment which contains two measures relating to air quality and road traffic accidents. There are 32,844 areas (lower super output areas) in England. They are ranked with 1 most deprived.

Area (Number of LSOAs in each area are in brackets)	No. of LSOAs in the 10% Most Deprived areas in England (% of LSOA in brackets)	No of LSOAs in the 11%-20% Most Deprived areas in England (% of LSOA in brackets)
Hampshire & Isle of Wight (1,194)	130	92
Hampshire Economic Area (1,105)	113	81
Hampshire County area (832)	31	23
Isle of Wight (89)	17	11
Portsmouth (125)	62	30
Southampton (148)	20	28
Basingstoke and Deane (109)	5	0
East Hampshire (72)	4	1
Eastleigh (77)	0	1
Fareham (73)	0	1
Gosport (53)	3	6
Hart (57)	0	0
Havant (78)	0	6
New Forest (114)	7	1
Rushmoor (58)	1	0
Test Valley (71)	4	5
Winchester (70)	7	2

Legend

Deciles (England Base)



Source Data: MHCLG 2019



© Crown copyright and database rights 2019 Ordnance Survey 100019180.

LSOA are census based population areas of between 1,000 and 3,000 residents.