

The 2019 IDAOPI

(Income Deprivation Affecting Older People Index)

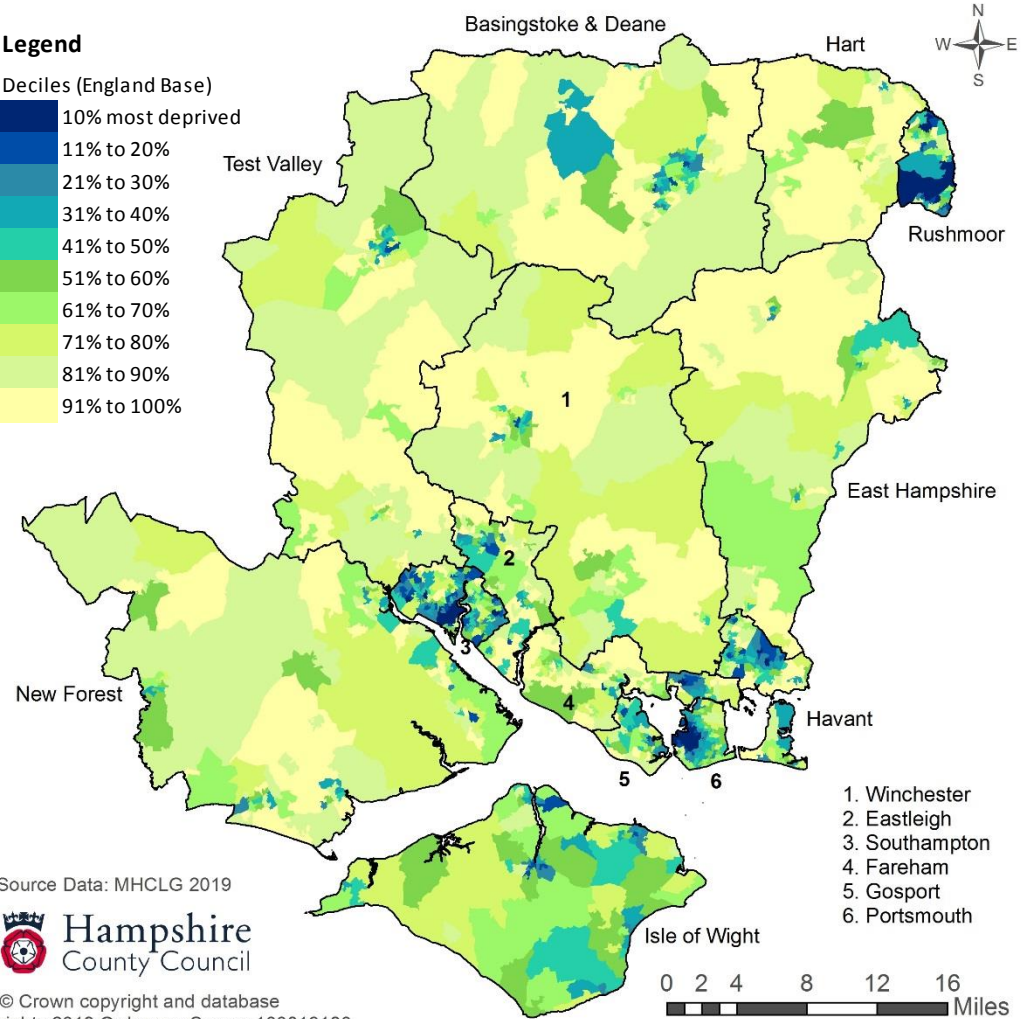
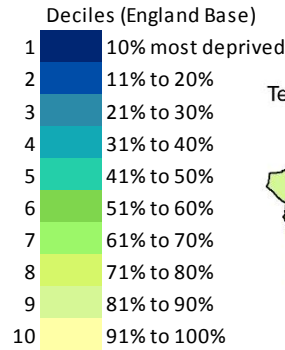


Measures: the proportion of all those aged 60 or over who experience income deprivation, here defined as adults aged 60 or over receiving Income Support or income-based Jobseekers Allowance or income-based Employment and Support Allowance or Pension Credit (Guarantee) or elements of Universal Credit.

The Income Deprivation Affecting Older People Index is a supplementary index produced alongside the Income Deprivation Domain. IDAOPI covers those aged 60 and over. There are 32,844 areas (lower super output areas) in England. They are ranked with 1 most deprived.

Area (Number of LSOAs in each area are in brackets)	No. of LSOAs in the 10% Most Deprived areas in England (% of LSOA in brackets)	No of LSOAs in the 11%-20% Most Deprived areas in England (% of LSOA in brackets)
Hampshire & Isle of Wight (1,194)	40	64
Hampshire Economic Area (1,105)	40	59
Hampshire County area (832)	14	25
Isle of Wight (89)	0	5
Portsmouth (125)	13	9
Southampton (148)	13	25
Basingstoke and Deane (109)	0	3
East Hampshire (72)	0	0
Eastleigh (77)	0	2
Fareham (73)	0	1
Gosport (53)	0	2
Hart (57)	0	0
Havant (78)	2	8
New Forest (114)	0	1
Rushmoor (58)	12	6
Test Valley (71)	0	1
Winchester (70)	0	1

Legend



Source Data: MHCLG 2019



© Crown copyright and database rights 2019 Ordnance Survey 100019180.

- 1. Winchester
- 2. Eastleigh
- 3. Southampton
- 4. Fareham
- 5. Gosport
- 6. Portsmouth

LSOA are census based population areas of between 1,000 and 3,000 residents.