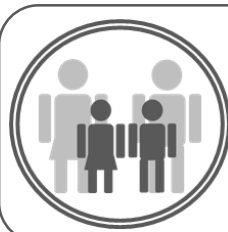


# The 2019 IDACI

## (Income Deprivation Affecting Children Index)



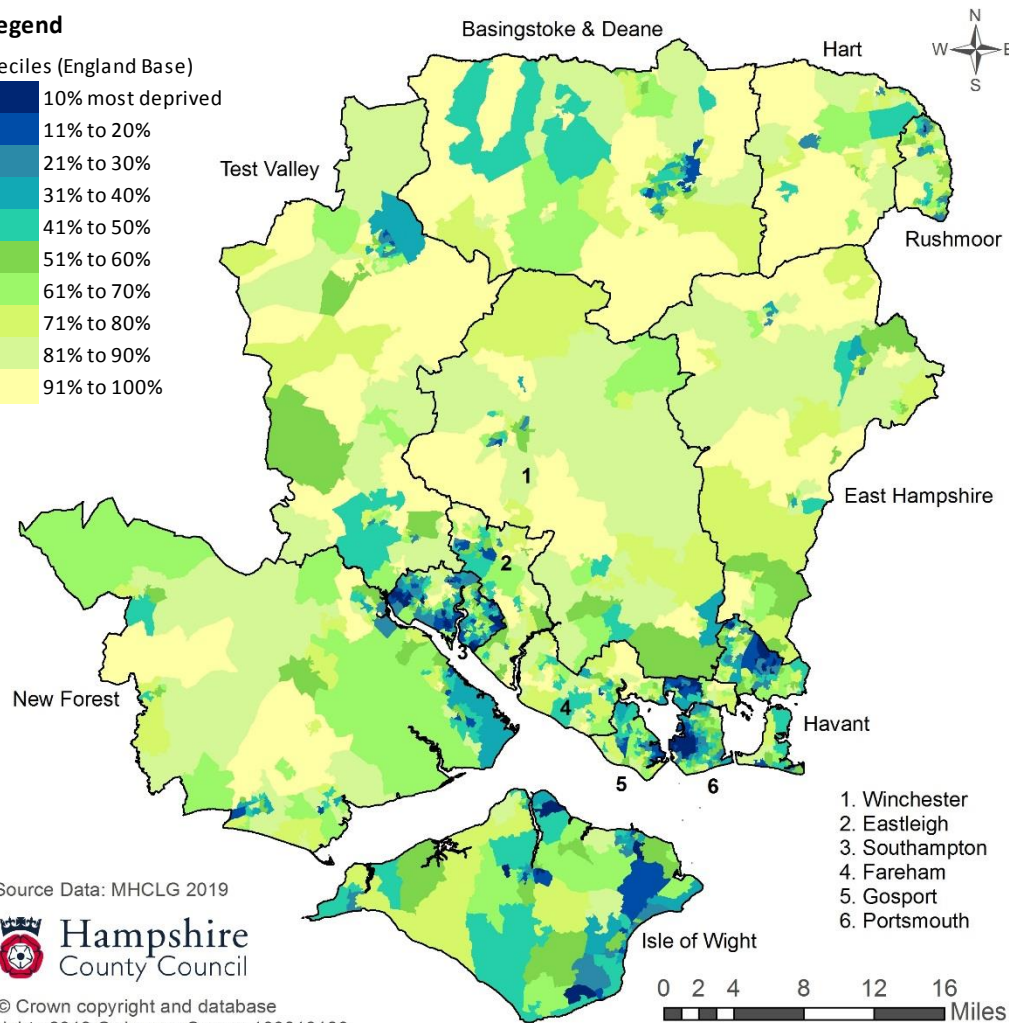
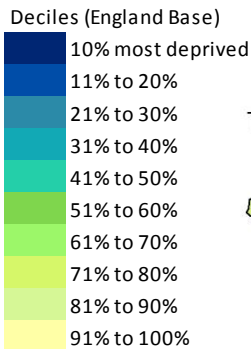
Measures: the proportion of all children aged 0 to 15 living in income deprived families, here defined as families that either receive Income Support or income-based Jobseekers Allowance or income-based Employment and Support Allowance or Pension Credit (Guarantee) or elements of Universal Credit.

The Income Deprivation Affecting Children Index is a supplementary index produced alongside the Income Deprivation Domain. IDACI covers only children aged 0-15 living in income deprived households. The score is expressed as the proportion of all children aged 0-15 living in income deprived families. There are 32,844 areas (lower super output areas) in England. They are ranked with 1 most deprived.

Area (Number of LSOAs in each area are in brackets)	No. of LSOAs in the 10% Most Deprived areas in England (% of LSOA in brackets)	No of LSOAs in the 11%-20% Most Deprived areas in England (% of LSOA in brackets)
Hampshire & Isle of Wight (1,194)	49	76
Hampshire Economic Area (1,105)	43	67
Hampshire County area (832)	8	35
Isle of Wight (89)	6	9
Portsmouth (125)	16	14
Southampton (148)	19	18
Basingstoke and Deane (109)	0	6
East Hampshire (72)	0	0
Eastleigh (77)	0	2
Fareham (73)	0	1
Gosport (53)	1	6
Hart (57)	0	0
Havant (78)	6	11
New Forest (114)	0	6
Rushmoor (58)	1	0
Test Valley (71)	0	2
Winchester (70)	0	1

LSOA are census based population areas of between 1,000 and 3,000 residents.

### Legend



Source Data: MHCLG 2019



© Crown copyright and database rights 2019 Ordnance Survey 100019180.