

The 2019 Index of Health Deprivation & Disability

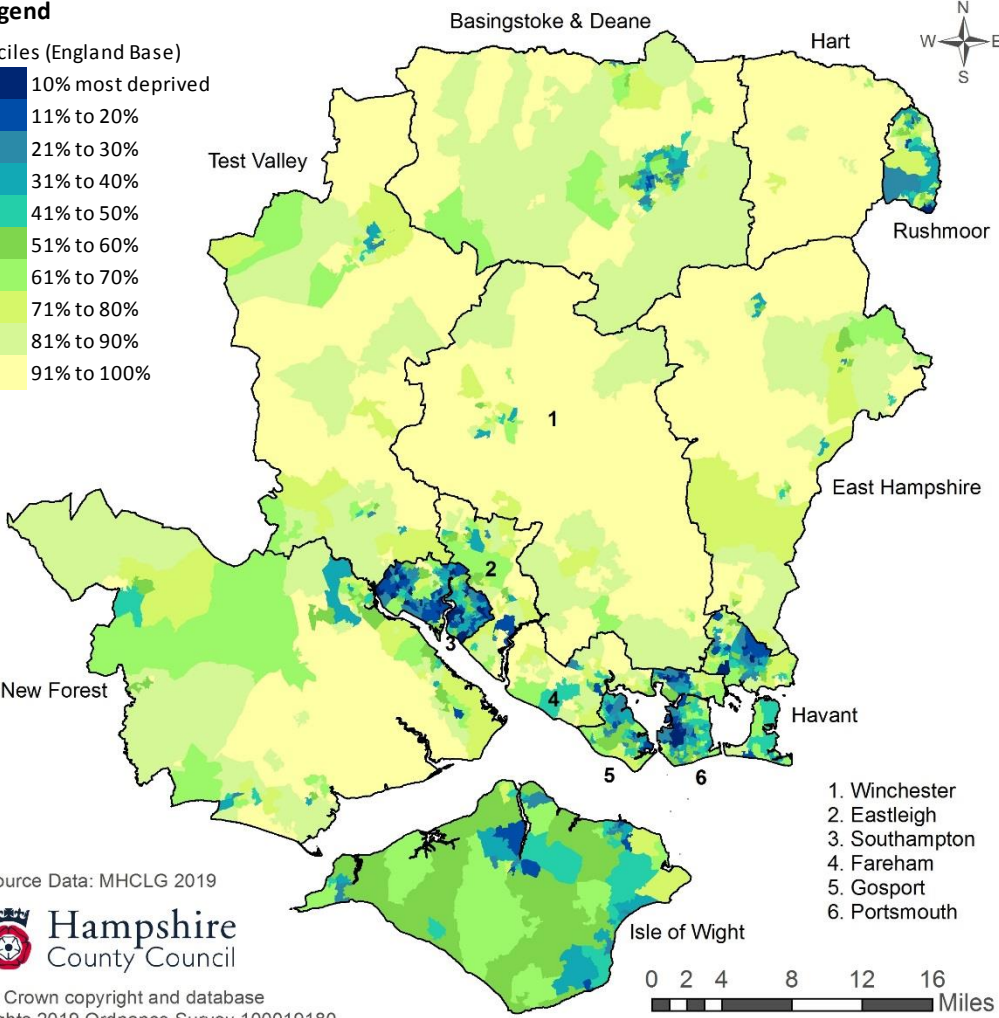
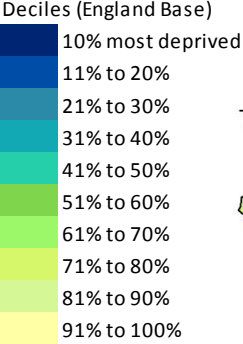


Measures: Years of potential life lost: An age and sex standardised measure of premature death; Comparative illness and disability ratio: An age and sex standardised morbidity/disability ratio; Acute morbidity: An age and sex standardised rate of emergency admission to hospital;; Mood and anxiety disorders: A composite based on the rate of adults suffering from mood and anxiety disorders, hospital episodes data and suicide mortality data.

The Index of Health Deprivation and Disability measures premature death and the impairment of quality of life by poor health. It considers both physical and mental health. The domain measures morbidity, disability and premature mortality but not aspects of behaviour or environment that may be predictive of future health deprivation. There are 32,844 areas (lower super output areas) in England. They are ranked with 1 most deprived.

Area (Number of LSOAs in each area are in brackets)	No. of LSOAs in the 10% Most Deprived areas in England (% of LSOA in brackets)	No of LSOAs in the 11%-20% Most Deprived areas in England (% of LSOA in brackets)
Hampshire & Isle of Wight (1,194)	41	82
Hampshire Economic Area (1,105)	41	75
Hampshire County area (832)	5	26
Isle of Wight (89)	0	7
Portsmouth (125)	13	10
Southampton (148)	23	39
Basingstoke and Deane (109)	0	1
East Hampshire (72)	0	0
Eastleigh (77)	0	1
Fareham (73)	0	1
Gosport (53)	0	6
Hart (57)	0	0
Havant (78)	3	14
New Forest (114)	0	1
Rushmoor (58)	2	2
Test Valley (71)	0	0
Winchester (70)	0	0

Legend



Source Data: MHCLG 2019



© Crown copyright and database rights 2019 Ordnance Survey 100019180.

LSOA are census based population areas of between 1,000 and 3,000 residents.