

# Financial & Business



## Hampshire & IoW



**£4.5 billion**  
To the local economy



**11,535**  
Local businesses



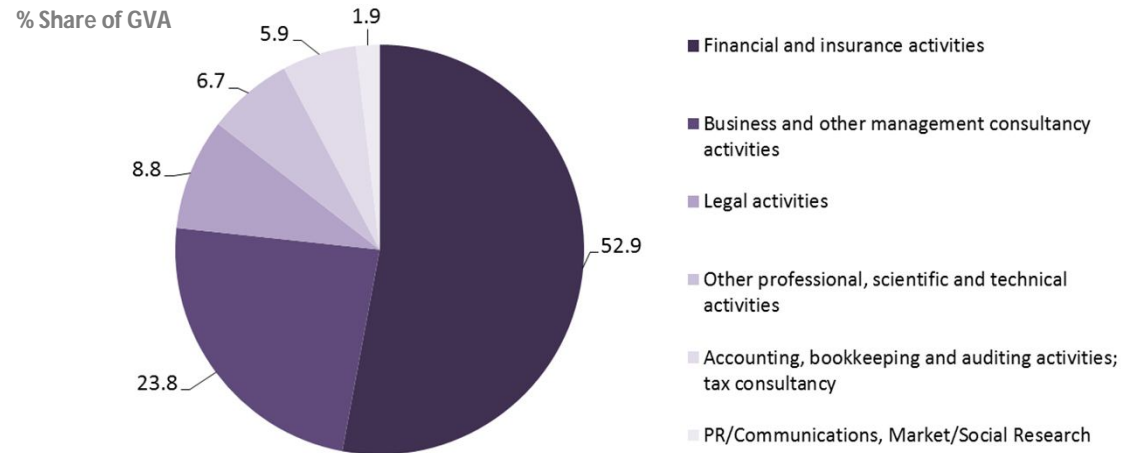
**56,200**  
Sector employees

The financial services industry and associated business services provide vital support for the UK economy, with the UK the world's largest exporter of financial services. The sector is estimated to contribute £4.5 billion to the local economy. There are over 11,500 businesses in Hampshire and the Isle of Wight engaged in financial and business activities with some 56,200 employees. Locally the sector has a percentage employee share lower than the national average, although there are exceptions in Eastleigh and Winchester.

## Size of economy

**£4.5 billion**

The sector is estimated to be worth £4.5 billion to the Hampshire & IoW economy, just over half (53%) attributable to Financial and Insurance and 47% to Business services related activity.



Source: HCC using Annual Business Survey (aGVA, Total Employment) and BRES

## Earnings (£ Gross Median Weekly)

Financial and Business	UK	Hampshire
Financial service activities, except insurance and pension funding	730	760
Legal and accounting activities	710	730
Activities auxiliary to financial services and insurance activities	680	710
Advertising and market research	630	660
Activities of head offices; management consultancy activities	630	660
Architectural activities	620	640
Insurance, reinsurance and pension funding, except compulsory social security	610	640
Scientific research and development	590	610
Other professional, scientific and technical activities n.e.c.	560	580
Translation and interpretation activities	390	410

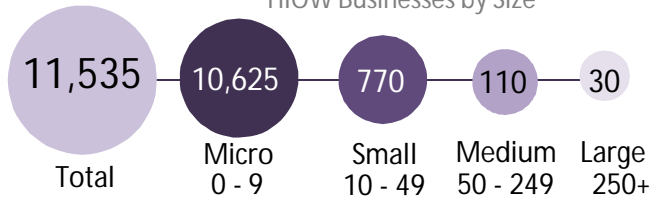
Source: ASHE 2014. Hampshire industry estimates based on a workplace earnings multiplier of 0.03. All earnings rounded to nearest £10.

# Financial & Business

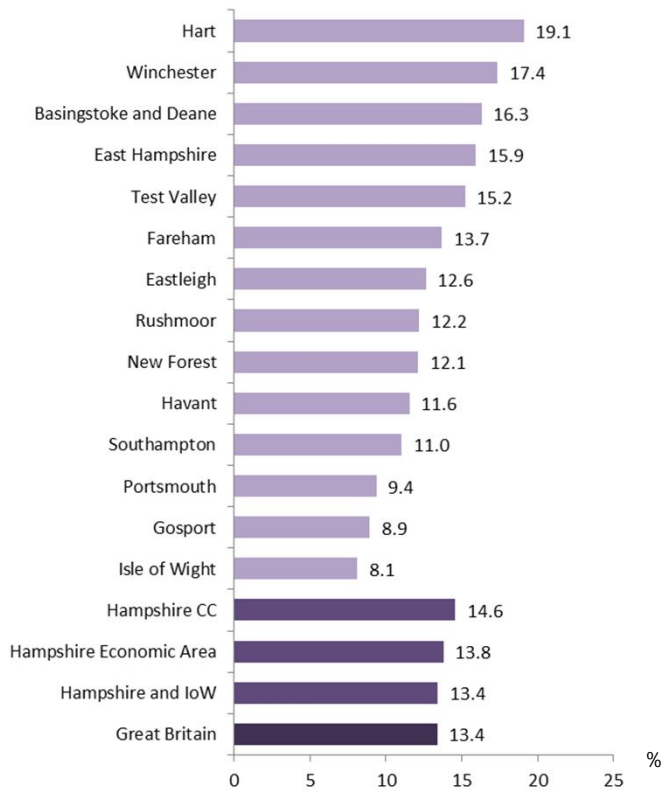


## Number of Businesses

HIOW Businesses by Size



Percentage of All Businesses in the Financial and Business Sector

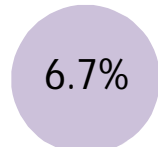


Source: UK Business Counts 2015

## Employees

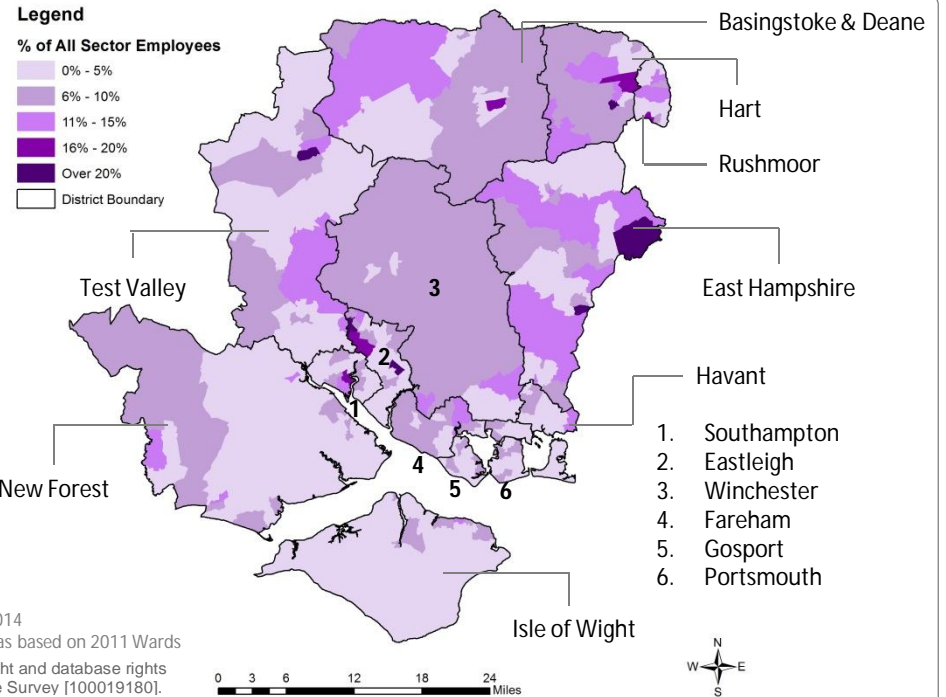


Employees in Hampshire & Isle of Wight

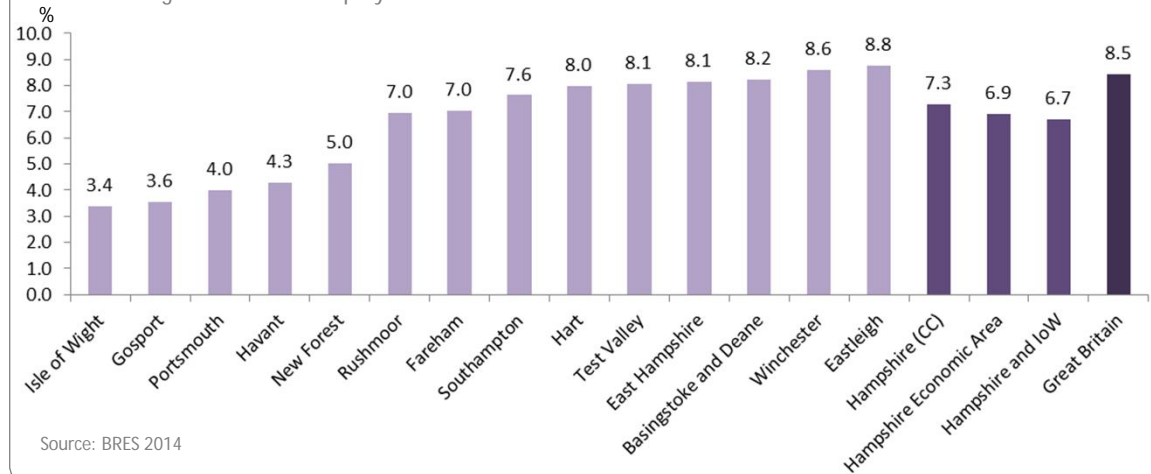


% of all employees in Hampshire & Isle of Wight

Source: BRES 2014  
Sub-district areas based on 2011 Wards  
© Crown copyright and database rights  
2015 Ordnance Survey [100019180].



Percentage of All Sector Employees in the Financial and Business Sector



Source: BRES 2014